

---

**FIRST 5 COMMISSION OF SAN DIEGO  
A PROPOSITION 10 COMMISSION**  
(A component unit of the County of San Diego, California)

**COMPREHENSIVE ANNUAL FINANCIAL REPORT**

**For the Fiscal Year Ended June 30, 2021**

---



This Page Intentionally Left Blank

---

**FIRST 5 COMMISSION OF SAN DIEGO  
A PROPOSITION 10 COMMISSION**  
(A component unit of the County of San Diego, California)

**COMPREHENSIVE ANNUAL FINANCIAL REPORT**

**For the Fiscal Year Ended June 30, 2021**

---

Christina Bagsic

Fiscal Manager

This Page Intentionally Left Blank

**FIRST 5 COMMISSION OF SAN DIEGO  
A PROPOSITION 10 COMMISSION  
FOR THE FISCAL YEAR ENDED JUNE 30, 2021**

**TABLE OF CONTENTS**

<b><u>INTRODUCTION SECTION</u></b>	<b><u>Page</u></b>
Letter of Transmittal.....	i
Board of Commissioners .....	vi
Organization Chart .....	viii
GFOA Certificate of Achievement.....	x
 <b><u>FINANCIAL SECTION</u></b>	
Independent Auditor's Report.....	1
Management's Discussion and Analysis .....	5
<b>Basic Financial Statements Government-wide Financial Statements</b>	
Statement of Net Position .....	11
Statement of Activities .....	12
<b>Governmental Fund Financial Statements</b>	
Balance Sheet.....	13
Reconciliation of the Governmental Fund Balance Sheet to the Statement of Net Position.....	14
Statement of Revenues, Expenditures and Changes in Fund Balance .....	15
Reconciliation of the Governmental Fund Statement of Revenues, Expenditures and Changes in Fund Balance to the Statement of Activities .....	16
<b>Notes to Basic Financial Statements.....</b>	<b>17</b>
<b>Required Supplementary Information Section</b>	
Budgetary Comparison Schedule .....	33
 <b><u>SUPPLEMENTARY INFORMATION SECTION</u></b>	
<b>First 5 CA IMPACT Hub Grant</b>	
Balance Sheet.....	36
Statement of Revenues, Expenditures and Changes in Fund Balance .....	37

**FIRST 5 COMMISSION OF SAN DIEGO  
A PROPOSITION 10 COMMISSION  
FOR THE FISCAL YEAR ENDED JUNE 30, 2021**

**First 5 CA Home Visiting Coordination Grant**

Balance Sheet.....	38
Statement of Revenues, Expenditures and Changes in Fund Balance .....	39

**CalWORKs Home Visiting Program Services**

Balance Sheet.....	40
Statement of Revenues, Expenditures and Changes in Fund Balance .....	41

**Cal-Learn Educational Support Services**

Balance Sheet.....	42
Statement of Revenues, Expenditures and Changes in Fund Balance .....	43

**CA Home Visiting Program State General Fund Expansion**

Balance Sheet.....	44
Statement of Revenues, Expenditures and Changes in Fund Balance .....	45

**CA Dept. of Education QRIS Certification Grant**

Balance Sheet.....	46
Statement of Revenues, Expenditures and Changes in Fund Balance .....	47

**STATISTICAL SECTION (Unaudited)**

**Financial Trends**

Net Position by Component.....	51
Changes in Net Position .....	52
Fund Balances – General Fund .....	53
Changes in Fund Balances – General Fund .....	54

**Revenue Capacity**

First 5 California County Tax Revenue Projections for Fiscal Years 2021-2026.....	55
Cigarette Taxes and Other Tobacco Products Surtax Revenue, 1959-60 to 2019-20.....	56

**Demographic Information**

California Live Births Data .....	57
Demographic Data .....	58
2019 American Community Survey – Income Data.....	59
2019 American Community Survey – Employment Status .....	60

**Operating Information**

Capital Assets Statistics .....	61
---------------------------------	----

## COMPLIANCE SECTION

Independent Auditor's Report on Internal Control over Financial Reporting and on Compliance and Other Matters Based on an Audit of Financial Statements Performed in accordance with <i>Government Auditing Standards</i> .....	64
Independent Auditor's Report on State Compliance .....	66

This Page Intentionally Left Blank



# **INTRODUCTION SECTION**

This Page Intentionally Left Blank



## ***COMMISSION MEMBERS***

***NATHAN FLETCHER – Chair***

***SANDRA L. McBRAYER - Vice Chair***

***RICK RICHARDSON – Secretary***

***NICK MACCHIONE – Commissioner***

***DR. WILMA J. WOOTEN- Commissioner***

***ALETHEA ARGUILEZ – Executive Director***

---

September 15, 2021

To the Members of the Commission and the Citizens of the County of San Diego:

The Comprehensive Annual Financial Report (CAFR) of the First 5 Commission of San Diego (F5SD) for the fiscal year ended June 30, 2021 is hereby submitted as mandated by applicable statutes. These statutes require First 5 San Diego to annually issue a report of its financial position and activity. A complete audit of the report by an independent firm of certified public accountants is also required. Responsibilities for both accuracy of the data and the completeness and fairness of the presentation, including all disclosures, rest with the Commission's management. The information in this report is intended to present the reader with a comprehensive view of the Commission's financial position and the results of its operations for the fiscal year ending June 30, 2021, along with additional disclosures and financial information designed to enable the reader to gain an understanding of First 5 San Diego's financial activities.

Moss, Levy & Hartzheim, LLP Certified Public Accountants have issued an unmodified ("clean") opinion on First 5 San Diego's financial statements for the fiscal year ended June 30, 2021. The independent auditor's report is located on page 1 of this CAFR.

Management's discussion and analysis (MD&A) immediately follows the independent auditor's report and provides a narrative introduction, overview and analysis of the basic financial statements. The MD&A complements this letter of transmittal and should be read in conjunction.

## ***PROFILE OF THE COMMISSION***

First 5 San Diego was created by the San Diego County Board of Supervisors on December 8, 1998 following the passage of Proposition 10, through which the California voters made an unprecedented investment in early childhood development. During the last 22 years, First 5 San Diego has made a lasting positive impact in San Diego County through its allocation of more than \$818 million towards programs and operations that improve the well-being of young children and families in San Diego County.

## *LOCAL ECONOMY*

San Diego County encompasses 4,206 square miles and extends nearly 160 miles from the Pacific Ocean to Imperial County to the East. It borders Mexico to the South and Orange County and Riverside County to the North. There are 18 incorporated cities within the county. Total county population per the 2018 U.S. Census is 3,302,833, with children under 5 years old representing 6.4% of that total with 39,258 new births in 2019, the last year that data was available. The County unemployment rate has fallen slowly from a high of 13.9% in June 2020 to 7.6% in June 2021. Total non-farm employment increased by 60,800 from the previous year, up 4.5%. Notable increases include:

- Leisure and Hospitality led the increases adding 27,800 jobs
- Education and Health Services increased 7,600 jobs
- Professional and Business Services increased by 7,600 jobs
- Other services are up 6,800 jobs
- Construction up 6,000 jobs

The economy has gotten much better in the last year. The unemployment rate for the United States (US) was 5.4% in July 2021. The State of California (CA) was 7.6%, and San Diego (SD) was at 6.9%. These compare to a US rate of 10.2%, CA rate of 13.7%, and SD rate of 12.3% in July 2020. Looking forward, San Diego County's economy is expected to improve as COVID restrictions are lifted.

## *COVID-19*

During the fiscal year 20/21, First 5 San Diego continued with the impact of the COVID-19 pandemic just as the rest of the nation was. The pandemic presented the challenge of not being able to be physically present with our children and families we serve through our contracted partners. It was a critical priority to ensure our ongoing connection, support and communication to our providers as they strived to maintain continuity of services. F5SD supported our contracted partners to ensure that the children of San Diego County were as safe and cared for as possible during this difficult time. F5SD continued a lead function within the County's Emergency Operations Center (EOC) leading on behalf of the early care and education / childcare sector county-wide. Notable efforts include supporting new policy to support childcare vouchers, funds to support access to PPE and other supplies and a childcare provider grant. Additionally, F5SD engaged in an advisory role for the appropriation of Federal CAREs Act and ARPA funds that have been prioritized for the early care and education / child care sector. This event has brought together cross sector leaders/stakeholders throughout our region to lift up the vision and mission of F5SD.

## *MAJOR ACCOMPLISHMENTS*

- Recognizing the financial conditions facing the State, the County of San Diego and San Diego County families with young children; the Commission allocated \$30,180,089 in contracts for services in the areas of health, education, family and community programs.
- The Commission awarded contracts to 19 agencies throughout San Diego County for services in the areas of health, education, family and community services.
- Government Finance Officers Association of the United States (GFOA) awarded a Certificate of Achievement for Excellence in Financial Reporting to First 5 Commission for the fiscal Year ended June 30, 2020. This was the seventh consecutive year that the Commission has achieved this prestigious award.

## *FUTURE INITIATIVES*

This was the first year of the 2020-2025 Strategic Plan which was approved by the Commission on April 18, 2019, covering fiscal years 2020/2021 through 2024/2025.

The primary components of this plan are:

- The accountability and framework designed to measure the success of the plan;
- Increase access, affordability and quality of early care and education;
- Increase access, affordability and utilization for healthcare services for children 0-5;
- Identify and treat children with special health and developmental needs as early as possible;
- Ensure parents utilize age-appropriate health and development information in their parenting practices;
- Ensure that parents and caregivers are knowledgeable about available community resources and programs;
- In addition, the new plan further captures four new strategic directions that include the following: Resilient Families, Coordinated Systems of Care, Integrated Leadership and Sustained Funding. A direct service approach will continue in the near-term, now with a greater focus on how these investments may also support systems change and sustainability that goes beyond First 5 San Diego's investments in the long-term.

## *OTHER FINANCIAL INFORMATION*

### *Internal Control*

Management assumes full responsibility for the completeness and reliability of the information contained in this report, based upon a comprehensive framework of internal controls that has been established for this purpose. The internal control structure is designed to protect the Commission's assets from loss, theft, or misuse and to ensure that adequate accounting data is compiled for the preparation of the financial statements in conformity with General Accepted Accounting Principles. Because the cost of internal controls should not exceed anticipated benefits, the objective is to provide reasonable, rather than absolute assurance that the financial statements are free of any material misstatements.

### *Budgetary and Accounting Systems*

The Commission is required to adopt an operating budget for the following year before the end of each fiscal year. Any increase in the adopted appropriations during the fiscal year must have Commission approval. Periodic financial updates are provided to the Commissioners at the regularly scheduled Commission meetings.

### *Financial Spending Plan*

The Commission adopts a Financial Spending Plan (FSP) annually as part of the budget approval process. The FSP is being used to plan the reduction of the Sustainability Fund (Fund Balance) to an amount of \$7.5 million for a Management Reserve. Approximately \$6.1 million annually on average will be used from the Sustainability Fund over the next 5 years.

## *ACKNOWLEDGEMENTS*

The Commission's Comprehensive Annual Financial Report was prepared through the combined effort of all First 5 San Diego's staff. Special recognition is due to the Fiscal Department staff for their effort to ensure timely and accurate reporting. I also thank the Commissioners for their continued support and interest in planning the financial operations of First 5 San Diego in a responsible and comprehensive manner.

Sincerely,



Alethea Arguilez  
Executive Director  
First 5 Commission of San Diego

**FIRST 5 COMMISSION OF SAN DIEGO  
A PROPOSITION 10 COMMISSION  
FOR THE FISCAL YEAR ENDED JUNE 30, 2021**

**Board of Commissioners**

Nathan Fletcher - Chair

Sandra L. McBrayer - Vice Chair

Rick Richardson – Secretary

Nick Macchione - Commissioner

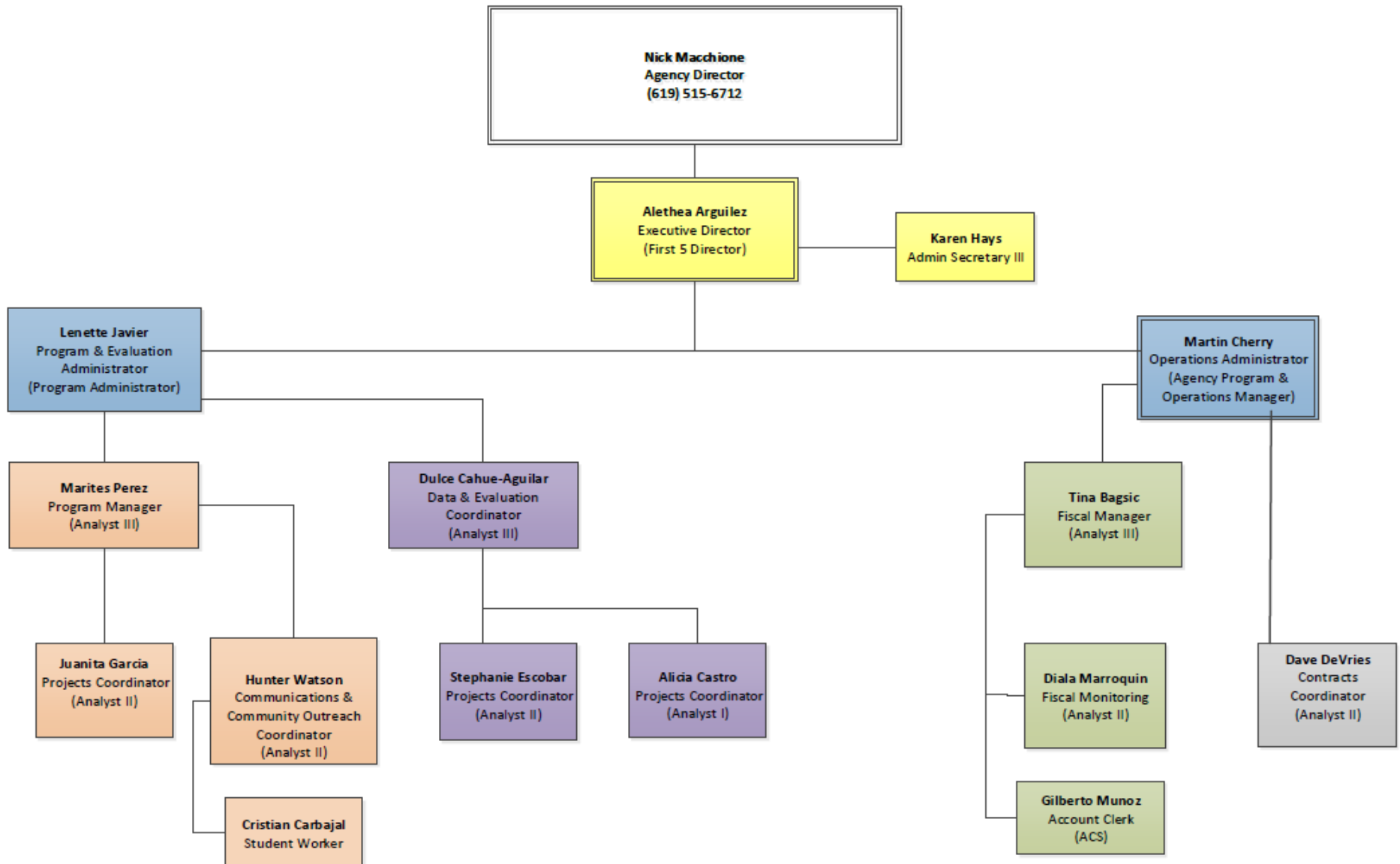
Dr. Wilma J. Wooten - Commissioner

**Executive Director**

Alethea Arguilez

This Page Intentionally Left Blank





This Page Intentionally Left Blank



Government Finance Officers Association

Certificate of  
Achievement  
for Excellence  
in Financial  
Reporting

Presented to

**First 5 Commission of San Diego  
California**

For its Comprehensive Annual  
Financial Report  
For the Fiscal Year Ended

June 30, 2020

*Christopher P. Morill*

Executive Director/CEO

This Page Intentionally Left Blank

# **FINANCIAL SECTION**

This Page Intentionally Left Blank



MOSS, LEVY & HARTZHEIM LLP

CERTIFIED PUBLIC ACCOUNTANTS

**PARTNERS**

RONALD A LEVY, CPA  
CRAIG A HARTZHEIM, CPA  
HADLEY Y HUI, CPA  
ALEXANDER C HOM, CPA  
ADAM V GUISE, CPA  
TRAVIS J HOLE, CPA

**COMMERCIAL ACCOUNTING & TAX SERVICES**

9465 WILSHIRE BLVD., 3<sup>RD</sup> FLOOR  
BEVERLY HILLS, CA 90212  
TEL: 310.273.2745  
FAX: 310.670.1689  
www.mlhcpas.com

**GOVERNMENTAL AUDIT SERVICES**

5800 HANNUM AVE., SUITE E  
CULVER CITY, CA 90230  
TEL: 310.670.2745  
FAX: 310.670.1689  
www.mlhcpas.com

## INDEPENDENT AUDITOR'S REPORT

Board of Commissioners  
First 5 Commission of San Diego  
San Diego, California

### *Report on the Financial Statements*

We have audited the accompanying financial statements of the governmental activities and the major fund of the First 5 Commission of San Diego (the Commission), a discretely presented component unit of the County of San Diego, California, as of and for the fiscal year ended June 30, 2021, and the related notes to the financial statements, which collectively comprise the Commission's basic financial statements as listed in the table of contents.

### *Management's Responsibility for the Financial Statements*

Management is responsible for the preparation and fair presentation of these financial statements in accordance with accounting principles generally accepted in the United States of America; this includes the design, implementation, and maintenance of internal control relevant to the preparation and fair presentation of financial statements that are free from material misstatement, whether due to fraud or error.

### *Auditor's Responsibility*

Our responsibility is to express opinions on these financial statements based on our audit. We conducted our audit in accordance with auditing standards generally accepted in the United States of America and the standards applicable to financial audits contained in *Government Auditing Standards*, issued by the Comptroller General of the United States. Those standards require that we plan and perform the audit to obtain reasonable assurance about whether the financial statements are free from material misstatement.

An audit involves performing procedures to obtain audit evidence about the amounts and disclosures in the financial statements. The procedures selected depend on the auditor's judgment, including the assessment of the risks of material misstatement of the financial statements, whether due to fraud or error. In making those risk assessments, the auditor considers internal control relevant to the entity's preparation and fair presentation of the financial statements in order to design audit procedures that are appropriate in the circumstances, but not for the purpose of expressing an opinion on the effectiveness of the entity's internal control. Accordingly, we express no such opinion. An audit also includes evaluating the appropriateness of accounting policies used and the reasonableness of significant accounting estimates made by management, as well as evaluating the overall presentation of the financial statements.

We believe that the audit evidence we have obtained is sufficient and appropriate to provide a basis for our audit opinions.

## ***Opinions***

In our opinion, the financial statements referred to above present fairly, in all material respects, the respective financial position of the governmental activities and the major fund of First 5 Commission of San Diego as of June 30, 2021, and the respective changes in financial position for the fiscal year then ended in accordance with accounting principles generally accepted in the United States of America.

## ***Other Matters***

### ***Required Supplementary Information***

Accounting principles generally accepted in the United States of America require that the required supplementary information, such as management's discussion and analysis on pages 5 through 10 and the Budgetary Comparison information on page 33 be presented to supplement the basic financial statements. Such information, although not a part of the basic financial statements, is required by the Governmental Accounting Standards Board, who considers it to be an essential part of financial reporting for placing the basic financial statements in an appropriate operational, economic, or historical context. We have applied certain limited procedures to the required supplementary information in accordance with auditing standards generally accepted in the United States of America, which consisted of inquiries of management about the methods of preparing the information and comparing the information for consistency with management's responses to our inquiries, the basic financial statements, and other knowledge we obtained during our audit of the basic financial statements. We do not express an opinion or provide any assurance on the information because the limited procedures do not provide us with sufficient evidence to express an opinion or provide any assurance.

### ***Other Information***

Our audit was performed for the purpose of forming an opinion on the financial statements that collectively comprise the Commission's basic financial statements. The introductory section, supplementary information, and the statistical section listed in the table of contents are presented for purposes of additional analysis and are not required parts of the basic financial statements.

The supplementary information on pages 36 through 47 are the responsibility of management and were derived from and relate directly to the underlying accounting and other records used to prepare the financial statements. Such information has been subjected to the auditing procedures applied in the audit of the financial statements and certain additional procedures, including comparing and reconciling such information directly to the underlying accounting and other records used to prepare the financial statements or to the financial statements themselves, and other additional procedures in accordance with auditing standards generally accepted in the United States of America. In our opinion, the supplementary information section is fairly stated, in all material respects, in relation to the financial statements as a whole.

The introductory and statistical sections have not been subjected to the auditing procedures applied in the audit of the basic financial statements and, accordingly, we do not express an opinion or provided any assurance on them.



### ***Other Reporting Required by Government Auditing Standards***

In accordance with *Government Auditing Standards*, we have also issued our report dated September 15, 2021, on our consideration of the Commission's internal control over financial reporting and on our tests of its compliance with certain provisions of laws, regulations, contracts, and grant agreements and other matters. The purpose of that report is to describe the scope of our testing of internal control over financial reporting and compliance and the results of that testing, and not to provide an opinion on internal control over financial reporting or on compliance. That report is an integral part of an audit performed in accordance with *Government Auditing Standards* in considering the Commission's internal control over financial reporting and compliance.

*Moss, Levy & Hartzheim*

Moss, Levy & Hartzheim, LLP  
Culver City, California  
September 15, 2021

This Page Intentionally Left Blank

## **MANAGEMENT'S DISCUSSION AND ANALYSIS (MD&A)**

---

### **INTRODUCTION**

Our discussion and analysis of the First 5 Commission of San Diego's (The Commission) financial performance provides an overview of the Commission's financial activities for the fiscal year that ended June 30, 2021. It should be read in conjunction with the Commission's financial statements.

The Management's Discussion and Analysis (MD&A) is an element of the reporting model adopted by the Governmental Accounting Standards Board (GASB) in Statement No. 34, *Basic Financial Statements—and Management's Discussion and Analysis—for State and Local Governments*, issued June 1999; GASB Statement No. 37, *Basic Financial Statements—and Management's Discussion and Analysis—for State and Local Governments: Omnibus*, an amendment to GASB Statements No. 21 and No. 34, issued in June 2001 and; GASB Statement No. 38, *Certain Financial Statement Note Disclosures*, issued in 2001. Certain comparative information between the current year and the prior year is required to be presented in the MD&A.

### **FINANCIAL HIGHLIGHTS (FY 2020/2021)**

This Financial Highlights section is governmental fund information.

Expenditures were \$1,758,751 less than revenues. Overall revenues were \$33,000,364. Expenditures were \$31,241,613. This is the first time since 2013 that revenues have been greater than expenditures. This is due to the revenues from the Prop 56 backfill being about \$2 million higher than expected.

Expenditures fall within three categories: Administrative, Program, and Evaluation. Administrative expenditures were \$2,590,119 or 8.3 % of the total expenditures (not to be confused with the Administrative Rate, which is calculated on the final Operating Budget); Program expenditures were \$27,771,134 or 88.9%; Evaluation expenditures were \$880,360 or 2.8% of the expenses. Total expenditures were \$31,241,613.

The Commission's Administrative Rate is set by policy to be no more than 10% of the Total Operating Budget. For FY 2020/2021 the administrative rate was 7.47% of the budget. This is based on the Total Administrative Expenditures of \$2,590,119 and the final Total Operating Budget of \$34,653,746.

### **OVERVIEW OF THE FINANCIAL STATEMENTS**

The Commission's basic financial statements are comprised of three components: 1) government-wide financial statements, 2) fund financial statements and 3) notes to the financial statements.

#### **Government-Wide Financial Statements**

The *government-wide financial statement* is designed to provide readers with a broad overview of the Commission's finances in a manner similar to a private sector business.

The *Statement of Net Position* presents information showing how the Commission’s net position changed during the most recent fiscal year. All changes in net position are reported as soon as the underlying event giving rise to the change occurs, regardless of the timing of related cash flows. Thus, revenues and expenses are reported in this statement for some items that will only result in cash flows in future fiscal periods (e.g. earned but unused vacation leave). The government-wide financial statements can be found on pages 11 and 12 of this report.

### Fund Financial Statements

A fund is a group of related accounts that is used to maintain control over resources that have been segregated for specific activities or objectives. The Commission, like other local governments, uses fund accounting to ensure compliance with finance-related legal requirements. Fund financial statements report essentially the same functions as those reported in the government-wide financial statements. However, unlike the government-wide financial statements, fund financial statements focus on near-term inflows and outflows of spendable resources, as well as on balances of spendable resources available at the end of the fiscal year. In the County of San Diego’s ORACLE accounting system Proposition 10 funds are designated as a Special Revenue Fund.

The Commission adopts an annual appropriated budget for its special revenue fund. A budgetary comparison statement (page 33) has been provided for the special revenue fund to demonstrate compliance with this budget.

The fund financial statements can be found on pages 13 and 15 of this report.

### Government-Wide Financial Analysis

#### **Net Position**

Table I: Net Position

	<b>FY 2020/2021</b>	<b>FY 2019/2020</b>
Total Assets	\$ 51,517,228	\$ 50,667,385
Total Liabilities	9,397,268	10,217,606
Net Position:		
Restricted	-	-
Unrestricted	42,119,960	40,449,779
Total Net Position	\$ 42,119,960	\$ 40,449,779

The Commission’s total net position increased by \$1,670,181 or 4.1% from the prior fiscal year due to revenues from the Prop 56 backfill being higher than expected by nearly \$2 million.

## Changes in Net Position

Table II: Changes in Net Position

	<b>FY 2020/2021</b>	<b>FY 2019/2020</b>
Program Revenues	\$ 32,586,617	\$ 30,560,823
General Revenues	413,747	955,100
<b>Total Revenues</b>	<b>33,000,364</b>	<b>31,515,923</b>
Administrative Expenses	3,484,606	3,696,281
Program Expenses	27,771,134	33,893,728
<b>Total Expenses</b>	<b>31,255,740</b>	<b>37,590,009</b>
Change in net position	1,744,624	(6,074,086)
<b>Net position – Beginning, July 1</b>	<b>\$ 40,449,779</b>	<b>\$ 46,523,865</b>
<b>Prior period adjustment</b>	<b>(74,443)</b>	<b>-</b>
<b>Net position – Beginning, July 1, restated</b>	<b>\$40,375,336</b>	<b>-</b>
<b>Net position – Ending, June 30</b>	<b>\$ 42,119,960</b>	<b>\$ 40,449,779</b>

Program Revenues had an increase of \$2,025,794 or 6.6% from the previous fiscal year primarily due to having received a higher than expected backfill from Prop 56.

General Revenues decreased by (\$541,353) or 56.7% from the prior fiscal year due to lower yields from all cash being in the County Pool with no long-term investments.

The change in Net Position went from negative to positive resulting in a total change of \$7,818,710. The change is due to less program costs that were planned to lower expenses to match revenues by the end of the 2020 – 2025 Strategic Plan and higher than expected revenues.

In 2009 the Commission decided to reduce the Sustainability Fund to zero through systematically spending more every year until the Fund was expended. The funds have been used to maintain funding in the community at a constant level as Prop 10 revenues continued to decline. The Net Position has decreased every year since 2013, until this year. In FY 2020 – 2021 the Net Position increased by \$1,744,624. This increase is due to a change in the strategy of reducing the Sustainability Fund. For the 2015 – 2020 Strategic Plan period the fund was reduced by \$7.8 million per year on average. For the 2020 – 2025 Strategic Plan period the rate of reduction has been reduced to a \$6.2 million average to change the slope so when the fund does run out it will be less of an impact on the community. The increase in Net Position this year is due to the planned slowing of the Sustainability Fund reduction and a higher than expected Prop 56 backfill.

## BUDGETARY HIGHLIGHTS

- Expenditures were less than budgeted by \$3,412,133 or 9.8% due to significant savings in labor from vacant positions and programs that did not expend their full budgeted allocation.
- Prop 10 Tobacco Tax revenue had an increase over budget of \$4,294,192 or 17.6% due to an increase in tobacco tax backfill of Prop 56.
- Revenue from the County of San Diego Health and Human Services Agency for the Home Visiting program were less than budgeted by \$1,086,253 or 31% due to this being the first year of

the program. The program got off to a slow start do to COVID-19 and was managed very conservatively. Additionally, difficulties hiring qualified staffing compounded the problem.

- Labor & Benefits expense had a favorable variance of \$440,439 or 17.9% due to position vacancies during the fiscal year.
- Contributions to Community Projects (Program Expenses) had a favorable variance of \$3,046,335 or 9.9% due to lower than expected expenditures in contracts.

### **BEYOND FY 2020/2021**

In April 2019, the Commission approved the Strategic Plan that will guide the Commission’s community investments for fiscal years 2020-21 to 2024-25. During this period, the Sustainability Fund that allowed the investment in programs well beyond the revenue received will be eliminated. By the end of the Strategic Plan 2020–2025 the Commission will no longer have a Sustainability Fund due to reduction of the fund over the life of the Strategic Plan. The plan is to convert the Sustainability Fund to an adequate Management Reserve, and match expenses to revenues in the future years beyond 2025.

The Sustainability Fund was used to supplement revenues by \$7.8 million on average over the 2015 – 2020 Strategic Plan. The fund is projected to supplement income on average by \$6.2 million per fiscal year and be nearly exhausted at the end of the 2020-2025 Strategic Plan period with \$7.5 million remaining as a management reserve

The Commission, through formal action, approved the Budget that obligates funding for FY 2021-2022 for the following programs:

Healthy Development Services	\$ 10,000,000
First 5 First Steps Home Visiting	8,651,929
Learn Well Initiative	8,000,000
Oral Health Initiative	1,000,000
KidSTART Center	800,000
Mi Escuelita Therapeutic Preschool	653,160
Parent & Public Education	400,000
2-1-1 Information & Referral	300,000
Childhood Injury Prevention	150,000
Maternity Shelter	125,000
Community Outreach	100,000
<b>Total</b>	<b>\$ 30,180,089</b>

### **DECLINING REVENUES**

History has proven that Prop 10 revenues derived from the sales of tobacco products decline as the sales of tobacco products decrease. It is estimated the Commission will receive about \$22 million per year in Proposition 10 revenues after the Sustainability Fund will be completely exhausted at the end of the 2024-2025 fiscal year. Leveraging of additional contracts, grants and new sources of revenues are continuously being explored to support the future sustainability of the services provided to the children and families of San Diego County.

## **EFFECTS OF COVID-19**

The COVID-19 pandemic continues to be the single greatest threat to our economy in many years. At the beginning of this reporting period, California was just beginning to emerge from a stay-at-home order issued by the Governor. Some businesses were allowed to start re-opening to just be ordered to close again as the number of COVID-19 cases in hospitals nearly doubled.

Throughout this fiscal year there have been ongoing attempts to limit the COVID-19 exposure to lessen the public impact. Data shows that the period from December 2020 through March 2021 as having the highest levels of confirmed COVID-19 cases.

In mid-December 2020 a COVID-19 vaccine became publicly available. It was given at first to the high-risk population and eventually to the general public.

By the end of the fiscal year in June 2021 the economy continued to reopen with few restrictions. Positive signs of changes from the previous year include the following:

- The leisure and hospitality sector is up 17.5%.
- The category of “other services” as reported by the U.S. Bureau of Labor Statistics is up 19.1%.
- Overall, the “non-farm” sectors are up 5.2%.
- California’s unemployment rate was 10.1% for 2020, it is now down to 7.6% at the end of the fiscal year mid-way through the 2021 calendar year.

At the time of this report, there is an emerging Delta Variant becoming the dominant COVID-19 strain. It has been noted that this strain is much more infectious than the original strain and leading to increased transmissibility. The impact of this new variant is yet to be determined and time will tell if this creates a significant impact to the organization.

Amidst the continued pandemic, we see the economy is recovering:

- More than 75% of the eligible population are vaccinated with at least one dose (2 doses is fully vaccinated).
- The average hourly wage is up 4%.
- The U.S. Gross Domestic Product is projected to grow 7% in 2021.
- Business is opening so rapidly that there are work-force shortages in all sectors.

The pandemic is far from over, but the economy is showing significant signs of recovery and return to pre-pandemic levels of activity. Some reports project the economy to not fully recover until 2024. It appears that the worse seems to be behind us and economic statistics are showing signs of recovery. First 5 San Diego shares in the optimism that all aspects of the economy are improving, and strides are being made as it relates to controlling the spread of COVID-19. The pandemic may subside, but the effects on our way of life will continue to shape future priorities of First 5 San Diego and the world we all live in.

## **REQUESTS FOR INFORMATION**

This financial report is designed to provide a general overview of the First 5 Commission of San Diego finances. Questions concerning any of the information provided in this report or requests for additional financial information should be addressed to: First 5 Commission of San Diego, 9655 Granite Ridge Drive, Suite 120, San Diego, California 92123.



**FIRST 5 COMMISSION OF SAN DIEGO  
A PROPOSITION 10 COMMISSION  
STATEMENT OF NET POSITION  
JUNE 30, 2021**

**GOVERNMENTAL  
ACTIVITIES**

	<u>2021</u>
<b>Assets</b>	
Cash and investments in county treasury	\$ 49,324,834
Imprest cash	250
Accounts receivable	2,108,006
Due from County of San Diego	81,942
Prepaid expenses	<u>2,196</u>
Total assets	<u>51,517,228</u>
<b>Liabilities</b>	
Accounts payable	9,204,958
Due to County of San Diego	88,479
Compensated absences:	
Due within one year	73,418
Due more than one year	<u>30,413</u>
Total liabilities	<u>9,397,268</u>
<b>Net Position</b>	
Unrestricted	<u>42,119,960</u>
Total net position	<u>\$ 42,119,960</u>

See accompanying notes to the basic financial statements.

**FIRST 5 COMMISSION OF SAN DIEGO  
A PROPOSITION 10 COMMISSION  
STATEMENT OF ACTIVITIES  
FOR THE FISCAL YEAR ENDED JUNE 30, 2021**

		<b>PROGRAM REVENUES</b>	<b>NET (EXPENSE) REVENUE AND CHANGES IN NET POSITION</b>
		<b>PROPOSITION 10 AND SPECIAL FUND</b>	<b>GOVERNMENTAL ACTIVITIES</b>
<b><u>GOVERNMENTAL ACTIVITIES</u></b>	<b><u>EXPENSES</u></b>		<b><u>2021</u></b>
Health	\$ 11,627,348	\$ 10,530,637	\$ (1,096,711)
Learning	7,595,960	7,457,971	(137,989)
Family	7,733,280	10,375,686	2,642,406
Community	814,546	737,717	(76,829)
General administration	<u>3,484,606</u>	<u>3,484,606</u>	<u>-</u>
Total governmental activities	<u>\$ 31,255,740</u>	<u>\$ 32,586,617</u>	<u>1,330,877</u>
<b>GENERAL REVENUES:</b>			
Net investment revenue			<u>413,747</u>
Total general revenues			<u>413,747</u>
Change in net position			<u>1,744,624</u>
Net position, beginning of fiscal year			40,449,779
Prior period adjustments			<u>(74,443)</u>
Net position, beginning of fiscal year, restated			<u>40,375,336</u>
Net position – end of fiscal year			<u>\$ 42,119,960</u>

See accompanying notes to the basic financial statements.

**FIRST 5 COMMISSION OF SAN DIEGO  
A PROPOSITION 10 COMMISSION  
BALANCE SHEET  
GOVERNMENTAL FUND  
JUNE 30, 2021**

	<u>2021</u>
<b>Assets</b>	
Cash and investments in county treasury	\$ 49,324,834
Imprest cash	250
Accounts receivable	2,108,006
Due from County of San Diego	81,942
Prepaid expenditures	<u>2,196</u>
Total assets	<u>\$ 51,517,228</u>
<b>Liabilities and Fund Balance</b>	
Liabilities:	
Accounts payable	\$ 9,204,958
Due to County of San Diego	<u>88,479</u>
Total liabilities	<u>9,293,437</u>
Fund Balance:	
Non-spendable	2,196
Committed	<u>42,221,595</u>
Total fund balance	<u>42,223,791</u>
Total liabilities and fund balance	<u>\$ 51,517,228</u>

See accompanying notes to the basic financial statements.

**FIRST 5 COMMISSION OF SAN DIEGO  
A PROPOSITION 10 COMMISSION  
RECONCILIATION OF THE GOVERNMENTAL FUND BALANCE SHEET  
TO THE STATEMENT OF NET POSITION  
JUNE 30, 2021**

	<u>2021</u>
Total governmental fund balance	\$ 42,223,791
Compensated absences are not due and payable in the current period and accordingly are not reported as fund liabilities. All compensated absences, both current and long-term, are reported in the Statement of Net Position.	(103,831)
Net position of governmental activities	<u>\$ 42,119,960</u>

See accompanying notes to the basic financial statements.

**FIRST 5 COMMISSION OF SAN DIEGO**  
**A PROPOSITION 10 COMMISSION**  
**STATEMENT OF REVENUES, EXPENDITURES AND CHANGES IN FUND BALANCE**  
**GOVERNMENTAL FUND**  
**FOR THE FISCAL YEAR ENDED JUNE 30, 2021**

Revenues:	<u>2021</u>
Prop 10 tobacco tax (including SMIF & Prop 56 back-fill)	\$ 28,636,321
F5CA IMPACT Hub	544,079
F5CA Home Visiting Coordination	35,153
CalWORKs Home Visiting Program Services	2,453,747
Cal-Learn Educational Support Services	717,980
CA Home Visiting Program State General Fund Expansion Program	164,941
CDE QRIS Certification Grant	34,396
Interest revenue	413,747
Total revenues	<u>33,000,364</u>
Expenditures:	
Labor and benefits (* less: Evaluation Labor)	2,015,727
Services and supplies	574,392
Evaluation (*add: Evaluation Labor)	880,360
Contributions to community projects	<u>27,771,134</u>
Total expenditures	<u>31,241,613</u>
Net change in fund balance	<u>1,758,751</u>
Fund balance, beginning of fiscal year	40,539,483
Prior period adjustments	<u>(74,443)</u>
Fund balance, beginning of fiscal year, restated	40,465,040
Fund balance, end of fiscal year	<u>\$ 42,223,791</u>

See accompanying notes to the basic financial statements.

**FIRST 5 COMMISSION OF SAN DIEGO  
A PROPOSITION 10 COMMISSION  
RECONCILIATION OF THE GOVERNMENTAL FUND STATEMENT OF REVENUES,  
EXPENDITURES AND CHANGES IN FUND BALANCE TO THE STATEMENT OF ACTIVITIES  
FOR THE FISCAL YEAR ENDED JUNE 30, 2021**

	<u>2021</u>
Net change in total governmental fund balance	\$ 1,758,751
In the statement of activities, compensated absences are measured by the amounts earned during the fiscal year. In the governmental fund, however, expenditures for these items are measured by the amount of financial resources used (essentially the amount paid).	(14,127)
Change in net position of governmental activities	<u>\$ 1,744,624</u>

See accompanying notes to the basic financial statements.

**FIRST 5 COMMISSION OF SAN DIEGO  
A PROPOSITION 10 COMMISSION  
NOTES TO BASIC FINANCIAL STATEMENTS  
JUNE 30, 2021**

---

**NOTE 1: SUMMARY OF SIGNIFICANT ACCOUNTING POLICIES**

---

**A. Reporting Entity**

The San Diego County Board of Supervisors established the First 5 Commission of San Diego, formerly the San Diego County Children and Families Commission (The Commission) on December 8, 1998, under the provisions of the California Children and Families Act of 1998 (Act). The Commission is discretely presented as a component unit of the County of San Diego, California. The Commission provides leadership for a network of support for all children from the prenatal stage through age five and their families; develops and operates in partnerships with communities and families; and is accountable for improving outcomes in children's health, safety and learning. The Commission is funded through tobacco tax revenue generated as a result of the California approval of the Proposition 10 Act (Prop 10) in November 1998. The Commission is made up of five members: one (1) member of the Board of Supervisors, two (2) members-at-large appointed by the Board of Supervisors, one (1) member is the Director of the Health and Human Services Agency and one (1) member is nominated by the Director of the Health and Human Services Agency from among the County health officer and persons responsible for management of the following County functions: children's services, public health services, social services, behavioral health services, and tobacco and other substance abuse prevention and treatment services.

In April 2019, the Commission adopted the Strategic Plan for 2020–2025. The plans focus the Commission's investments toward achieving key results that best promote early childhood development in San Diego County. The Commission's vision is that "All children are healthy, are loved and nurtured, and enter school as active learners." The current plan guides the allocation of up to \$30,180,089 (page 8) for fiscal year 2021/2022 to support four strategic goal areas that strengthen the relationships essential for the healthy development of young children: (1) Health, (2) Learning, (3) Family, and (4) Community. The plan spends down the fund balance from \$40.5 million at the beginning of FY 2020/2021 to \$5.9 million excluding a Management Reserve of \$7.5 million at the end FY 2024/2025.

**B. Measurement Focus, Basis of Accounting and Financial Statement Presentation**

The Commission's financial statements have been prepared in conformity with accounting principles generally accepted in the United States of America as applied to governmental agencies. The Governmental Accounting Standards Board (GASB) is the accepted standard-setting body for establishing governmental accounting and financial reporting principles. The Commission's more significant accounting policies are described below.

The government-wide financial statements (i.e. *The Statement of Net Position* and *The Statement of Activities* on pages 11 and 12 are reported using the *economic resources measurement focus* and the accrual basis of accounting. Revenues are recorded when earned and expenses are recorded when a liability is incurred, regardless of the timing of the related cash flows. Contributions to community projects through local contractors are recognized as expenditures when criteria for contract payments are met by the contractors.

FIRST 5 COMMISSION OF SAN DIEGO  
A PROPOSITION 10 COMMISSION  
NOTES TO BASIC FINANCIAL STATEMENTS  
JUNE 30, 2021

**NOTE 1: SUMMARY OF SIGNIFICANT ACCOUNTING POLICIES (continued)**

*The Statement of Net Position* presents the Commission's financial position in a *net position approach*.

Net Position

GASB Statement No. 63 requires that the difference between assets added to the deferred outflows of resources and liabilities added to the deferred inflows of resources be reported as net position. Net position is classified as net investment in capital assets, restricted, or unrestricted.

Net position that is net investment in capital assets consist of capital assets, net of accumulated depreciation, and reduced by the outstanding principal of related debt. Restricted net position is the portion of net position that has external constraints placed on it by creditors, grantors, contributors, laws, or regulations of other governments, or through constitutional provisions or enabling legislation. Unrestricted net position consists of net position that does not meet the definition of net investment in capital assets or restricted net position.

*The Statement of Activities* reports the change in net position in a net program cost format to demonstrate the degree to which the expense of the Commission is offset by its program revenues (page 12) in the categories of 1) Health, 2) Learning, 3) Family, and 4) Community.

Governmental fund financial statements, presented after the government-wide financial Statements are reported using the *current financial resources measurement focus* and the *modified accrual* basis of accounting on pages 13 and 14. Revenues are recognized as soon as they are both measurable and available. Revenues are considered to be *available* when they are collectible within the current period or soon enough thereafter to pay liabilities of the current period. Revenues are considered to be *available* when they are collectible within 90 days of the end of the current fiscal period. Revenues susceptible to accrual include tax revenue, grants, and investment income. Expenditures are recognized in the accounting period in which the liability is incurred, if measurable.

**C. Budgets, Budgetary Process and Encumbrances**

The Commission adopts an annual budget, which can be amended by the Commission throughout the fiscal year. Revenue (not including interest revenue) was budgeted at \$34.3 million per the Financial Spending Plan that was approved in April 2020. The Financial Spending Plan is reviewed annually and, if necessary, is revised to account for updated projections of birth rates, taxable sales of tobacco products and changes in interest rates. Budgeted revenues were established to balance revenues with projected expenditures. Liability for unrealized gains and losses under Governmental Accounting Standards Board's Statement No. 31 (GASB Statement No. 31) is not included in the budget.



**FIRST 5 COMMISSION OF SAN DIEGO  
A PROPOSITION 10 COMMISSION  
NOTES TO BASIC FINANCIAL STATEMENTS  
JUNE 30, 2021**

---

**NOTE 1: SUMMARY OF SIGNIFICANT ACCOUNTING POLICIES (continued)**

**D. Use of Estimates**

The preparation of financial statements in conformity with accounting principles generally accepted in the United States of America requires management to make estimates and assumptions that affect the reported amounts of assets and liabilities and disclosure of contingent assets and liabilities at the date of the financial statements and the reported amounts of revenues and expenditures during the reporting period. Actual reports could differ from those estimates.

**E. Cash and Investments**

Investments are valued at fair value. Fair value is defined as the amount that the Commission could reasonably expect to receive for an investment as a current sale between a willing buyer and seller and is generally measured by quoted market prices.

**F. Future Accounting Pronouncements**

GASB Statements listed below will be implemented in future financial statements:

Statement No. 87	"Leases"	The provisions of this statement are effective for fiscal years beginning after June 15, 2021.
Statement No. 89	"Accounting for Interest Cost Incurred before the End of a Construction Period"	The provisions of this statement are effective for fiscal years beginning after December 15, 2020.
Statement No. 91	"Conduit Debt Obligations"	The provisions of this statement are effective for fiscal years beginning after December 15, 2021.
Statement No. 92	"Omnibus 2020"	The provisions of this statement are effective for fiscal years beginning after June 15, 2021.
Statement No. 93	"Replacement of Interbank Offered Rates"	The provision of this statement except for paragraphs 11b, 13, and 14 are effective for fiscal years beginning after June 15, 2020. Paragraph 11b is effective for fiscal years beginning after December 31, 2021. Paragraphs 13 and 14 are effective for fiscal years beginning after June 15, 2021.

**FIRST 5 COMMISSION OF SAN DIEGO  
A PROPOSITION 10 COMMISSION  
NOTES TO BASIC FINANCIAL STATEMENTS  
JUNE 30, 2021**

**NOTE 1: SUMMARY OF SIGNIFICANT ACCOUNTING POLICIES (continued)**

**F. Future Accounting Pronouncements (continued)**

Statement No. 94	"Public-Private and Public-Public Partnerships and Availability Payment Arrangements"	The provisions of this statement are effective for fiscal years beginning after June 15, 2022.
Statement No. 96	"Subscription-Based Information Technology Arrangements"	The provisions of this statement are effective for fiscal years beginning after June 15, 2022.

**NOTE 2: CASH AND INVESTMENTS BY COUNTY TREASURY**

The Commission's cash and investments at June 30, 2021 are included in the County's balance sheet as "Cash and Investments in County Treasury". The Commission has two dedicated portfolios with the County Treasurer's Office, and a segment of these portfolios are positions in the County Investment Pool. The County Treasurer maintains an investment pool for all funds of the County and other agencies for which the County treasury is the depository. Interest earned on the pooled funds is allocated and credited to these funds quarterly. Interest on investments that are outside the County pool are recognized when earned (i.e. coupon payments on bonds). Interest from the County pool is apportioned to the Commission based on the average daily balances on deposit with the Treasurer of those funds. All cash and investments at June 30, 2021, are stated at fair value.

Cash and Investments in County Treasury consisted of the following at June 30, 2021:  
Assets Invested through the County Treasurers Office:

Negotiable Certificates of Deposit	\$ -
Commercial Paper Disc. Amortizing	-
County Pool	<u>49,324,834</u>
Total Cash and Investments by County Treasury	<u>\$ 49,324,834</u>

**FIRST 5 COMMISSION OF SAN DIEGO  
A PROPOSITION 10 COMMISSION  
NOTES TO BASIC FINANCIAL STATEMENTS  
JUNE 30, 2021**

**NOTE 2: CASH AND INVESTMENTS BY COUNTY TREASURY (continued)**

**Investments Authorized by the California Government Code**

The California Government Code Section 53601 governs the investments of the Commission. The Commission adopted an investment policy on October 4, 2004 but it does not contain policies for exposure to interest rate risk, credit risk and concentration of credit risk. Portfolios will invest primarily in the County Investment Pool ("County Pool"), Commercial Paper, Negotiable CD, Medium Term Notes, US Agencies and Treasuries. The portfolio maturity structure will be driven by the cash flow needs of First 5, as provided by staff members and accommodations for appropriate levels of liquidity.

California Government Code 53601 provides that the County Board of Supervisors is empowered to authorize the Commission to hold investments with maturities that exceed five years. The Commission has received such an authorization from the San Diego Board of Supervisors on March 22, 2005 to invest for a maximum of 20 years.

**Interest Rate Risk**

Interest rate risk is the risk that changes in market interest rates will adversely affect the fair value of an investment. In general, the longer the maturity of an investment, the greater the sensitivity of its fair value to the changes in market interest rates. Information about the sensitivity of the fair values of the Commission's investments to market interest rate fluctuations is provided by the following table that shows the distribution of the Commission's investments by maturity:

<u>Investment Type</u>	<u>Amount</u>	<u>Remaining Maturity in Months</u>		
		<u>12 months or less</u>	<u>13 to 24 months</u>	<u>25 to 60 months</u>
Negotiable Certificates of Deposit	\$ -	\$ -	\$ -	\$ -
Commercial Paper Disc.	-	-	-	-
County Pool	<u>49,324,834</u>	<u>49,324,834</u>	<u>-</u>	<u>-</u>
Total	<u>\$ 49,324,834</u>	<u>\$ 49,324,834</u>	<u>\$ -</u>	<u>\$ -</u>

**Credit Risk**

Generally, credit risk is the risk that the issuer of an investment will not fulfill its obligation to the holder of the investment. This is measured by the assignment of a rating by a nationally recognized statistical rating organization. Presented below is the minimum rating required by the California Government Code Section 53601 (where applicable) and the actual rating as of year-end for each investment type.

**FIRST 5 COMMISSION OF SAN DIEGO  
A PROPOSITION 10 COMMISSION  
NOTES TO BASIC FINANCIAL STATEMENTS  
JUNE 30, 2021**

**NOTE 2: CASH AND INVESTMENTS BY COUNTY TREASURY (continued)**

<u>Investment Type</u>	<u>Amount</u>	<u>Minimum Rating Required</u>	<u>Credit Quality Rating</u>
Negotiable Certificates of Deposit	\$ -	A-1 or equivalent	A-1
Commercial Paper Disc	-	A-1 or equivalent	AAA
County Pool	<u>49,324,834</u>	VARIOUS	AAA
Total	<u>\$ 49,324,834</u>		

**Concentration of Credit Risk**

The California Government Code Section 53601 places limitations on the amount that can be invested in any one issuer. Investments in any one issuer (other than U.S. Treasury securities, mutual funds, negotiable certificates of deposit, and external investment pools) that represent 1% or more of total investment are as follows:

<u>Issuer</u>	<u>Investment Type</u>	<u>Amount</u>	<u>% of Total Investments</u>
None for FY 2020/2021			

**Custodial Credit Risk**

Custodial risk for deposits is the risk that, in the event of the failure of a depository financial institution, a government will not be able to recover its deposits or will not be able to recover collateral securities that are in the possession of an outside party. The custodial credit risk for investments is the risk that in the event of the failure of the counter party (e.g., broker-dealer) to a transaction, a government will not be able to recover the value of its investment or collateral securities that are in the possession of another party. The California Government Code does not contain legal or policy requirements that would limit the exposure to custodial credit risk for deposits or investments, other than the following provision for deposits: The California Government Code Section 53652 requires that a financial institution secure deposits made by state or local governmental units by pledging securities in an undivided collateral pool held by a depository regulated under state law (unless so waived by the governmental unit). The fair value of the pledged securities in the collateral pool must equal at least 110% of the total amount deposited by the public agencies. California law also allows financial institutions to secure government deposits by pledging first trust deed mortgage notes having a value of 150% of the secure public deposits.

**FIRST 5 COMMISSION OF SAN DIEGO  
A PROPOSITION 10 COMMISSION  
NOTES TO BASIC FINANCIAL STATEMENTS  
JUNE 30, 2021**

**NOTE 2: CASH AND INVESTMENTS BY COUNTY TREASURY (continued)**

**Investment in San Diego Investment Pool**

The Commission is a voluntary participant in the pool regulated by the California Government Code Sections 53601 and 53635, under the oversight of the Treasurer of the County of San Diego. The fair value of the Commission's investment in this pool is reported in the accompanying financial statements at amounts based upon the Commission's pro-rata share of the fair value provided by the County of San Diego for the entire pool portfolio (in relation to the amortized cost of that portfolio). The balance available for withdrawal is based on the accounting records maintained by the pool, which are recorded on a cash basis.

**Fair Value**

The Commission categorizes the fair value measurements of its investments based on the hierarchy established by generally accepted accounting principles. The fair value hierarchy is based on the valuation inputs used to measure an asset's fair value. The following provides a summary of the hierarchy used to measure fair value:

Level 1 - Quoted prices (unadjusted) in active markets for identical assets.

Level 2 - Observable inputs other than Level 1 prices such as quoted prices for similar assets in active markets, quoted prices for identical or similar assets in markets that are not active, or other inputs that are observable, either directly or indirectly.

Level 3 - Unobservable inputs should be developed using the best information available under the circumstances, which might include the Commission's own data. The Commission should adjust that data if reasonable available information indicates that other market participants would use different data or certain circumstances specific to the Commission are not available to other market participants.

Uncategorized - Investments in the San Diego County Treasury Investment Pool and/or Local Agency Investment Funds/State Investment Pools are not measured using the input levels above because the Commission's transactions are based on a stable net asset value per share. All contributions and redemptions are transacted at \$1.00 net asset value per share.

The Commission's fair value measurements at June 30, 2021 were as follows:

	<b>Quoted Prices <u>Level 1</u></b>	<b>Observable Inputs <u>Level 2</u></b>	<b>Unobservable Inputs <u>Level 3</u></b>	<b><u>Uncategorized</u></b>	<b><u>Total</u></b>
Investments in county treasury	\$ -	\$ -	\$ -	\$ 49,324,834	\$ 49,324,834
Other investments	-	-	-	-	-
<b>Total leveled investments</b>	<b>\$ -</b>	<b>\$ -</b>	<b>\$ -</b>	<b>\$ 49,324,834</b>	<b>\$ 49,324,834</b>

**FIRST 5 COMMISSION OF SAN DIEGO  
A PROPOSITION 10 COMMISSION  
NOTES TO BASIC FINANCIAL STATEMENTS  
JUNE 30, 2021**

---

**NOTE 3: ACCOUNTS RECEIVABLE**

Accounts receivable is recorded at full value and represents the amount of Prop 10 revenue the California Children and Families Commission (First 5 California) owes the Commission for the month of June 2021, and miscellaneous Surplus Money Investment Fund (SMIF) revenue. Additionally, the First 5 Commission of California owes First 5 San Diego IMPACT Hub and CA Home Visiting Coordination for revenue earned in FY 2020/2021.

Prop 10 revenue for:	
June 2021	\$ 1,752,863
SMIF	17,300
F5CA IMPACT Hub Grant	302,690
F5CA Home Visiting Coordination Grant	35,153
Total	<u>\$ 2,108,006</u>

---

**NOTE 4: ACCOUNTS PAYABLE**

Accounts payable is comprised of \$9,204,958 in funding due to contractors at June 30, 2021.

---

**NOTE 5: DUE TO/DUE FROM COUNTY OF SAN DIEGO**

These are funds that are “due to” or “due from” the County of San Diego’s general fund.

The County of San Diego owes the Commission \$81,942 for investment interest earnings in the operating fund and the sustainability fund.

The Commission owes the County of San Diego \$88,479 for:

- 1) Purchasing & Contracting services of \$28;
- 2) Computing and IT charges of \$7,291;
- 3) Commission labor cost of \$81,160

**FIRST 5 COMMISSION OF SAN DIEGO  
A PROPOSITION 10 COMMISSION  
NOTES TO BASIC FINANCIAL STATEMENTS  
JUNE 30, 2021**

**NOTE 6: COMPENSATED ABSENCES**

Compensated absences represent the liability for unpaid vacation leave, holidays and other compensated absences with similar characteristics, except sick leave. Compensated absences liability activities for the year ended June 30, 2021 is as follows:

	<u>Balance</u> <u>July 1, 2020</u>	<u>Increases</u>	<u>Decreases</u>	<u>Balance</u> <u>July 1, 2021</u>	<u>Due Within</u> <u>One Year</u>	<u>Due More Than</u> <u>One Year</u>
Compensated Absences	<u>\$ 89,704</u>	<u>\$ 36,025</u>	<u>\$ (21,898)</u>	<u>\$ 103,831</u>	<u>\$ 73,418</u>	<u>\$ 30,413</u>

**NOTE 7: REVENUE**

The Commission receives a proportionate share of Proposition 10 and Proposition 56 money from First 5 California based on the number of live births in the county in comparison to the number of live births statewide. This fund is identified in the County of San Diego's accounting records as the First 5 Commission Operating Fund (Fund Number 49217). The Commission also receives Special Funding, as explained in Note 8, and Surplus Money Investment Fund (SMIF) allocations from First 5 California. The SMIF allocations represent distributions of interest accrued on statewide Proposition 10 money.

Revenue for the fiscal year 2020/2021 is comprised of:

Prop 10 revenue (monthly allocations)	\$ 22,003,878
SMIF	17,300
Prop 56 backfill (included in Prop10 in Financials)	6,615,143
F5CA IMPACT Hub Grant	544,079
F5CA Home Visiting Coordination Grant	35,153
CalWORKs Home Visiting Program Services	2,453,747
Cal-Learn Educational Support Services	717,980
CA Home Visiting Program State GF Expansion	164,941
CDE QRIS Certification Grant	34,396
Interest	<u>413,747</u>
Total revenue	<u>\$ 33,000,364</u>

**FIRST 5 COMMISSION OF SAN DIEGO  
A PROPOSITION 10 COMMISSION  
NOTES TO BASIC FINANCIAL STATEMENTS  
JUNE 30, 2021**

---

**NOTE 8: SPECIAL FUNDING**

Special funding for FY 2020/2021 included \$544,079, for the IMPACT Hub award; \$35,153 for the F5CA Home Visiting Coordination; \$2,453,747 for CalWORKs Home Visiting Program Services; \$717,980 for Cal-Learn Educational Support Services; \$164,941 for CA Home Visiting Program State General Fund Expansion; and \$34,396 for the California Department of Education QRIS Certification Program.

**First 5 CA IMPACT Coordination and Training and Technical Assistance Hub Grant (Hub).**

The purpose of First 5 CA IMPACT Hub Grant is to provide a mechanism for coordination and specialized support to consortia within a region to create economies of scale while building a local early learning system. The Hubs goals include: 1) coordinate local and regional CA-QRIS implementation across multiple systems, 2) leverage local and state resources to help consortia integrate county, state, and national research and promising practices into First 5 IMPACT work, 3) create regional efficiencies for quality improvement, staffing, data collection, and systems development, and 4) increase local capacity to build on existing strengths, increase efficiency, and meet local needs. The balance sheet and statement of revenue, expenditures and changes in fund balance for this special funding program is presented as supplementary information in this report on pages 36 and 37.

**First 5 CA Home Visiting Coordination Grant (F5 CA HVC).** The primary purpose of the F5 CA HVC is to facilitate activities that improve cross-program service coordination and integration into a system of supports that enables families to be served during their greatest need, with the most appropriate program and services to recover from the effects of the COVID-19 pandemic. The HVC goals include: 1) increase cross-agency understanding of local population needs relative to the impacts of COVID-19 on families and services; 2) ensure families are served through efficient, coordinated, and sustainable evidence-based home visiting programs that meet their critical recovery needs; 3) embed home visiting into early childhood systems to promote strong family outcomes; and 4) Promote cross-county, shared learning and capacity-building, resource sharing, and expertise to strengthen local systems change efforts, and rebuild early childhood and family support systems following the pandemic. The balance sheet and statement of revenue, expenditures and changes in fund balance for this special funding program is presented as supplementary information in this report on pages 38 and 39.

**CalWORKs Home Visiting Program Services.** The California Work Opportunity and Responsibility to Kids (CalWORKs) Home Visiting Program (HVP) is a voluntary program supervised by the California Department of Social Services (CDSS) and administered by participating California counties. The HVP aims to support positive health development and well-being outcomes for pregnant and parenting people, families, and infants born into poverty, expand their future educational, economic, and financial capability opportunities, and improve the likelihood that they will exit poverty. The balance sheet and statement of revenue, expenditures and changes in fund balance for this special funding program is presented as supplementary information in this report on pages 40 and 41.



**FIRST 5 COMMISSION OF SAN DIEGO  
A PROPOSITION 10 COMMISSION  
NOTES TO BASIC FINANCIAL STATEMENTS  
JUNE 30, 2021**

---

**NOTE 8: SPECIAL FUNDING (continued)**

**Cal-Learn Educational Support Services.** The Cal-Learn Program began in 1995 as part of a five-year California Work Pays Demonstration Project. It became a permanent program as of January 1, 1999, as part of California Work Opportunity and Responsibility to Kids (CalWORKs). The program is designed to prevent long-term dependence among pregnant and parenting teens receiving CalWORKs cash aid. The program's primary goal is to help teens achieve self-sufficiency through school participation leading to a high school diploma or its equivalent. Intensive case management and supportive services, including childcare and transportation assistance, as well as financial sanctions and incentive payments are used to encourage teens to stay in, or return to, high school. The balance sheet and statement of revenue, expenditures and changes in fund balance for this special funding program is presented as supplementary information in this report on pages 42 and 43.

**The California Home Visiting Program (CHVP)** is designed for overburdened families who are at risk for Adverse Childhood Experiences (ACEs), including child maltreatment, domestic violence, substance abuse and mental illness. Home visiting gives parents the tools and know-how to independently raise their children. It's a preventive intervention focused on promoting positive parenting and child development. Decades of research on home visiting shows that home visits by a trained professional during pregnancy and in the first few years of life improves the lives of children and families by preventing child abuse and neglect, supporting positive parenting, improving maternal and child health, and promoting child development and school readiness. Contractor shall be responsible for the start-up, implementation, and on-going service delivery of the California Home visiting Program in South Region. Countywide Coordinator shall work with contractor and other partners to ensure that services are provided with fidelity to the home visiting model and curriculums. Core areas of responsibilities include: home visiting service delivery, staff hiring, training, and certification, data collection and program evaluation, and inter-agency coordination. The balance sheet and statement of revenue, expenditures and changes in fund balance for this special funding program is presented as supplementary information in this report on pages 44 and 45.

**CDE Quality Rating and Improvement System (QRIS) Certification Grant:** The primary purposes of the California Department of Education (CDE) QRIS Certification Grant is to support the CDE QRIS system by building capacity for certified trainers, observers, assessors, and coaches. Funds are used to build regional and local capacity to implement the QRIS Rating Matrix and the Continuous Quality Improvement Pathways Certifications. The balance sheet and statement of revenue, expenditures and changes in fund balance for this special funding program is presented as supplementary information in this report on pages 46 and 47.

**FIRST 5 COMMISSION OF SAN DIEGO**  
**A PROPOSITION 10 COMMISSION**  
**NOTES TO BASIC FINANCIAL STATEMENTS**  
**JUNE 30, 2021**

---

**NOTE 9: LEASE OBLIGATION**

The Commission is obligated for the next ten years under a space rental lease which is accounted for as an operating lease. An operating lease does not give rise to property rights and therefore, the results of the lease agreement are reflected in the Commission's basic financial statements.

The future rental payments required under the operating lease is as follows:

Fiscal Year ending June 30:

2022	\$	268,104
2023		276,147
2024		284,432
2025		292,965
2026		301,754
2027		310,806
2028		320,131
2029		329,735
2030		<u>339,627</u>

Total lease obligation	\$	<u>2,723,701</u>
------------------------	----	------------------

---

**NOTE 10: EVALUATION EXPENSES**

The Commission spent \$880,360 on program evaluation during the audit period.

---

**NOTE 11: FUND BALANCES**

As of June 30, 2021, fund balances of the governmental funds are classified as follows:

Non-spendable – amounts that cannot be spent either because they are in non-spendable form (e.g. Prepaid Expense) or because they are legally or contractually required to be maintained intact (e.g. revolving fund or the principal of an endowment).

Restricted – amounts that can be spent only for specific purposes because of constitutional provisions or enabling legislation or because of constraints that are externally imposed by creditors, grantors, contributors, or the laws or regulations of other governments.

Committed – amounts that can be used only for specific purposes determined by a formal “Action Item” of the Commission. This formal “Action Item” is the approval by the Commission of a meeting agenda action item, if approved resulting in a final resolution to be implemented. The Commission is the highest level of decision-making authority. These committed amounts cannot be used for any other purpose unless the Commission removes or changes the specific uses through the same type of formal action taken to establish the commitment.

**FIRST 5 COMMISSION OF SAN DIEGO**  
**A PROPOSITION 10 COMMISSION**  
**NOTES TO BASIC FINANCIAL STATEMENTS**  
**JUNE 30, 2021**

---

**NOTE 11: FUND BALANCES (continued)**

Assigned – amounts that do not meet the criteria to be classified as restricted or committed but that are intended to be used for specific purposes. Under the Commission’s adopted policy, only the Commission or Executive Director may assign amounts for specific purposes.

Unassigned – all other spendable amounts.

When an expense is incurred for purposes for which both restricted and unrestricted fund balance is available, the commission considers restricted funds to have been spent first. When an expense is incurred for which committed, assigned, or unassigned fund balance are available, the Commission considers amounts to have been spent first out of committed funds, then assigned funds, and finally unassigned funds, as needed, unless the Commission has provided otherwise in its commitment or assignment actions.

The details of the fund balances as of June 30, 2021 are presented below:

**Fund Balance:**

Non-spendable:	
Prepaid items	<u>\$ 2,196</u>
Committed To:	
Administration	2,542,893
Evaluation	795,289
Healthy Development Services	9,910,290
KidStart	792,731
Oral Health	993,287
Reducing Childhood Injuries	123,126
Learn Well Initiative	7,420,779
Mi Escuelita	653,136
Targeted Home Visits	8,079,955
Parent & Public Education	397,312
Maternity Shelter	118,231
Information & Referral	295,500
Community Projects	99,066
Management Reserve	<u>10,000,000</u>
Total Committed	<u>42,221,595</u>
Total Fund Balance	<u>\$ 42,223,791</u>

**FIRST 5 COMMISSION OF SAN DIEGO**  
**A PROPOSITION 10 COMMISSION**  
**NOTES TO BASIC FINANCIAL STATEMENTS**  
**JUNE 30, 2021**

---

**NOTE 12: RELATED PARTY**

For FY 2020-21 the First 5 Commission had a contract with The Children's Initiative for \$150,000 for the Childhood Injury Prevention Program. The Chief Executive Officer of The Children's Initiative is Sandra McBrayer, one of the five First 5 San Diego Commissioners.

---

**NOTE 13: FINANCIAL HEALTH UNCERTAINTY**

The World Health Organization has declared the outbreak of Novel Coronavirus (COVID-19) as a "Public Health Emergency of International Concern," which continues to spread throughout the world and has adversely impacted global commercial activity and contributed to significant declines and volatility in financial markets. The Coronavirus outbreak and government responses are creating disruption in global supply chains and adversely impacting many industries. The outbreak could have a continued material adverse impact on economic and market conditions and trigger a period of global economic slowdown. The rapid development and fluidity of this situation precludes any prediction as to the ultimate material adverse impact. Nonetheless, the outbreak presents uncertainty and risk with respect to the Commission's performance, and financial results.

---

**NOTE 14: PRIOR PERIOD ADJUSTMENTS**

The accompanying financial statements include adjustments that resulted in the restatements of beginning net position. The following summarizes the effect of the prior period adjustments to beginning net position as of July 1, 2020:

Reason for adjustments	Governmental Activities
(Overstatement) of Accounts Receivable	<u>\$ (74,443)</u>
	<u>\$ (74,443)</u>

## **REQUIRED SUPPLEMENTARY INFORMATION SECTION**

This Page Intentionally Left Blank

**FIRST 5 COMMISSION OF SAN DIEGO  
A PROPOSITION 10 COMMISSION  
BUDGETARY COMPARISON SCHEDULE GOVERNMENT FUND  
FOR THE FISCAL YEAR ENDED JUNE 30, 2021**

	<b>BUDGETED AMOUNTS (UNAUDITED)</b>			<b>VARIANCE WITH FINAL BUDGET POSITIVE (NEGATIVE)</b>
	<b>ORIGINAL</b>	<b>FINAL</b>	<b>ACTUAL</b>	
Revenues:				
Prop 10 tobacco tax	\$ 24,342,129	\$ 24,342,129	\$ 28,636,321	\$ 4,294,192
F5CA IMPACT Hub Grant	416,580	416,580	544,079	127,499
F5CA Home Visiting Coordination Grant	-	100,000	35,153	(64,847)
CalWORKs Home Visiting Program	3,540,000	3,540,000	2,453,747	(1,086,253)
Cal-Learn Educational Support Services	944,425	1,172,729	717,980	(454,749)
CA Home Visiting Program State GFEP	600,000	600,000	164,941	(435,059)
CDE QRIS Certification Grant	-	-	34,396	34,396
Interest revenue	591,805	591,805	413,747	(178,058)
Total revenues	<u>30,434,939</u>	<u>30,763,243</u>	<u>33,000,364</u>	<u>2,237,121</u>
Expenditures:				
Labor and Benefits	2,456,166	2,456,166	2,015,727	440,439
Services and Supplies	536,341	501,341	574,392	(73,051)
Evaluation	878,770	878,770	880,360	(1,590)
Contributions to Community Projects	<u>30,454,165</u>	<u>30,817,469</u>	<u>27,771,134</u>	<u>3,046,335</u>
Total expenditures	<u>34,325,442</u>	<u>34,653,746</u>	<u>31,241,613</u>	<u>3,412,133</u>
Net change in fund balance	<u>(3,890,503)</u>	<u>(3,890, 503)</u>	<u>1,758,751</u>	<u>5,649,254</u>
Fund balance, beginning of fiscal year	40,539,483	40,539,483	40,539,483	-
Prior period adjustments			<u>(74,443)</u>	<u>(74,443)</u>
Fund balance, beginning of fiscal year, restated	40,539,483	40,539,483	40,465,040	(74,443)
Fund balance, end of fiscal year	<u>\$ 36,648,980</u>	<u>\$ 36,648,980</u>	<u>\$ 42,223,791</u>	<u>\$ 5,574,811</u>

### **Budget and Budgetary Process**

The Commission adopts an annual budget which can be amended throughout the year. The basis used to prepare the budget is in accordance with accounting principles generally accepted in the United States (GAAP).

This Page Intentionally Left Blank



## **SUPPLEMENTARY INFORMATION SECTION**

**FIRST 5 COMMISSION OF SAN DIEGO  
A PROPOSITION 10 COMMISSION  
BALANCE SHEET  
F5CA IMPACT Hub GRANT  
JUNE 30, 2021**

	<u>2021</u>
<b>Assets</b>	
Cash and investments in county treasury:	<u>\$ -</u>
Total assets	<u>\$ -</u>
<b>Liabilities and Fund Balance</b>	
Liabilities:	
Unearned revenue	<u>\$ -</u>
Total liabilities	<u>-</u>
Fund balance:	
Restricted for F5CA IMPACT Hub Grant	<u>-</u>
Total fund balance	<u>-</u>
Total liabilities and fund balance	<u>\$ -</u>

**FIRST 5 COMMISSION OF SAN DIEGO  
A PROPOSITION 10 COMMISSION  
STATEMENT OF REVENUES, EXPENDITURES AND CHANGE IN FUND BALANCE  
F5CA IMPACT Hub GRANT  
FOR THE FISCAL YEAR ENDED JUNE 30, 2021**

	<u>2021</u>
Revenues:	
F5CA IMPACT Hub Grant	<u>\$ 544,079</u>
Total revenues	<u>544,079</u>
Expenditures:	
Labor and benefits	-
Contributions to community projects	<u>544,079</u>
Total expenditures	<u>544,079</u>
Net change in fund balance	-
Fund balance, beginning of fiscal year	<u>-</u>
Fund balance, end of fiscal year	<u>\$ -</u>

**FIRST 5 COMMISSION OF SAN DIEGO  
A PROPOSITION 10 COMMISSION  
BALANCE SHEET  
F5CA HOME VISITING COORDINATION GRANT  
JUNE 30, 2021**

	<u>2021</u>
<b>Assets</b>	
Cash and investments in county treasury:	<u>\$ -</u>
Total assets	<u>\$ -</u>
<b>Liabilities and Fund Balance</b>	
Liabilities:	
Unearned revenue	<u>\$ -</u>
Total liabilities	<u>-</u>
Fund balance:	
Restricted for F5CA Home Visiting Coordination Grant	<u>-</u>
Total fund balance	<u>-</u>
Total liabilities and fund balance	<u>\$ -</u>

**FIRST 5 COMMISSION OF SAN DIEGO  
A PROPOSITION 10 COMMISSION  
STATEMENT OF REVENUES, EXPENDITURES AND CHANGE IN FUND BALANCE  
F5CA HOME VISITING COORDINATION GRANT  
FOR THE FISCAL YEAR ENDED  
JUNE 30, 2021**

	<u>2021</u>
Revenues:	
F5CA Home Visiting Coordination Grant	<u>\$ 35,153</u>
Total revenues	<u>35,153</u>
 Expenditures:	
Labor and benefits	-
Contributions to community projects	<u>35,153</u>
Total expenditures	<u>35,153</u>
 Net change in fund balance	-
 Fund balance, beginning of fiscal year	<u>-</u>
Fund balance, end of fiscal year	<u>\$ -</u>

**FIRST 5 COMMISSION OF SAN DIEGO  
A PROPOSITION 10 COMMISSION  
BALANCE SHEET  
CALWORKS HOME VISITING PROGRAM SERVICES  
JUNE 30, 2021**

	<u>2021</u>
<b>Assets</b>	
Cash and investments in county treasury:	<u>\$ -</u>
Total assets	<u>\$ -</u>
<b>Liabilities and Fund Balance</b>	
Liabilities:	
Unearned revenue	<u>\$ -</u>
Total liabilities	<u>-</u>
Fund balance:	
Restricted for CalWORKs Home Visiting Program Services	<u>-</u>
Total fund balance	<u>-</u>
Total liabilities and fund balance	<u>\$ -</u>

**FIRST 5 COMMISSION OF SAN DIEGO  
A PROPOSITION 10 COMMISSION  
STATEMENT OF REVENUES, EXPENDITURES AND CHANGE IN FUND BALANCE  
CALWORKS HOME VISITING PROGRAM SERVICES  
FOR THE FISCAL YEAR ENDED  
JUNE 30, 2021**

	<u>2021</u>
Revenues:	
CalWORKs Home Visiting Program Services	<u>\$ 2,453,747</u>
Total revenues	<u>2,453,747</u>
 Expenditures:	
Labor and benefits	-
Contributions to community projects	<u>2,453,747</u>
Total expenditures	<u>2,453,747</u>
 Net change in fund balance	-
 Fund balance, beginning of fiscal year	<u>-</u>
 Fund balance, end of fiscal year	<u>\$ -</u>

**FIRST 5 COMMISSION OF SAN DIEGO  
A PROPOSITION 10 COMMISSION  
BALANCE SHEET  
CAL-LEARN EDUCATIONAL SUPPORT SERVICES  
JUNE 30, 2021**

	<u>2021</u>
<b>Assets</b>	
Cash and investments in county treasury:	<u>\$ -</u>
Total assets	<u>\$ -</u>
<b>Liabilities and Fund Balance</b>	
Liabilities:	
Unearned revenue	<u>\$ -</u>
Total liabilities	<u>-</u>
Fund balance:	
Restricted for Cal-Learn Educational Support Services	<u>-</u>
Total fund balance	<u>-</u>
Total liabilities and fund balance	<u>\$ -</u>



**FIRST 5 COMMISSION OF SAN DIEGO  
A PROPOSITION 10 COMMISSION  
STATEMENT OF REVENUES, EXPENDITURES AND CHANGE IN FUND BALANCE  
CAL-LEARN EDUCATIONAL SUPPORT SERVICES  
FOR THE FISCAL YEAR ENDED  
JUNE 30, 2021**

	<u>2021</u>
Revenues:	
Cal-Learn Educational Support Services	<u>\$ 717,980</u>
Total revenues	<u>717,980</u>
 Expenditures:	
Labor and benefits	-
Contributions to community projects	<u>717,980</u>
Total expenditures	<u>717,980</u>
 Net change in fund balance	-
 Fund balance, beginning of fiscal year	<u>-</u>
 Fund balance, end of fiscal year	<u>\$ -</u>

**FIRST 5 COMMISSION OF SAN DIEGO  
A PROPOSITION 10 COMMISSION  
BALANCE SHEET  
CA HOME VISITING PROGRAM STATE GENERAL FUND  
EXPANSION PROGRAM  
JUNE 30, 2021**

	<u>2021</u>
<b>Assets</b>	
Cash and investments in county treasury:	\$ -
Total assets	<u>\$ -</u>
 <b>Liabilities and Fund Balance</b>	
Liabilities:	
Unearned revenue	\$ -
Total liabilities	<u>-</u>
 Fund balance:	
Restricted for CA Home Visiting Program State General Fund Expansion	<u>-</u>
Total fund balance	<u>-</u>
 Total liabilities and fund balance	<u>\$ -</u>

**FIRST 5 COMMISSION OF SAN DIEGO  
A PROPOSITION 10 COMMISSION  
STATEMENT OF REVENUES, EXPENDITURES AND CHANGE IN FUND BALANCE  
CA HOME VISITING PROGRAM STATE GENERAL FUND  
EXPANSION PROGRAM  
FOR THE FISCAL YEAR ENDED  
JUNE 30, 2021**

	<u>2021</u>
Revenues:	
CA Home Visiting Program State General Fund Expansion Program	<u>\$ 164,941</u>
Total revenues	<u>164,941</u>
 Expenditures:	
Labor and benefits	-
Contributions to community projects	<u>164,941</u>
Total expenditures	<u>164,941</u>
 Net change in fund balance	-
 Fund balance, beginning of fiscal year	<u>-</u>
 Fund balance, end of fiscal year	<u>\$ -</u>

**FIRST 5 COMMISSION OF SAN DIEGO  
A PROPOSITION 10 COMMISSION  
BALANCE SHEET  
CDE QRIS CERTIFICATION GRANT  
JUNE 30, 2021**

	<u>2021</u>
<b>Assets</b>	
Cash and investments in county treasury:	<u>\$ -</u>
Total assets	<u>\$ -</u>
 <b>Liabilities and Fund Balance</b>	
Liabilities:	
Unearned revenue	<u>\$ -</u>
Total liabilities	<u>-</u>
 Fund balance:	
Restricted for CDE QRIS Certification Grant	<u>-</u>
Total fund balance	<u>-</u>
 Total liabilities and fund balance	<u>\$ -</u>

**FIRST 5 COMMISSION OF SAN DIEGO  
A PROPOSITION 10 COMMISSION  
STATEMENT OF REVENUES, EXPENDITURES AND CHANGE IN FUND BALANCE  
CDE QRIS CERTIFICATION GRANT  
FOR THE FISCAL YEAR ENDED  
JUNE 30, 2021**

	<u>2021</u>
Revenues:	
CDE QRIS Certification Grant	<u>\$ 34,396</u>
Total revenues	<u>34,396</u>
Expenditures:	
Labor and benefits	-
Contributions to community projects	<u>34,396</u>
Total expenditures	<u>34,396</u>
Net change in fund balance	-
Fund balance, beginning of fiscal year	<u>-</u>
Fund balance, end of fiscal year	<u>\$ -</u>

This Page Intentionally Left Blank

# **STATISTICAL SECTION**

**FIRST 5 COMMISSION OF SAN DIEGO**  
**A PROPOSITION 10 COMMISSION**  
**Statistical Section (Unaudited)**  
**For the Fiscal Year Ended June 30, 2021**

The information in this section is not covered by the Independent Auditor's Report, but it is presented as supplemental data for the benefit of the readers of the comprehensive annual financial report. The objectives of the statistical section information are to provide financial statement users with additional statements, notes to financial statements and required supplemental information to understand and assess the Commission's economic condition.

	<u>Pages</u>
<u>Financial Trends</u>	
These schedules contain trend information to help the reader understand how the Commission's financial performance and well-being have changed over time.	51 -54
<u>Revenue Trends</u>	
These schedules contain trend information to help the reader assess the Commission's most significant revenue base.	55 - 56
<u>Demographic Information</u>	
These schedules offer economic and demographic indicators to help the reader understand how the information in the Commission's financial report relates to the services the Commission provides and the activities it performs.	57 - 60
<u>Operating Information</u>	
This schedule contains infrastructure data to help the reader understand how the information in the Commission's financial report relates to the services the Commission performs.	61



**FIRST 5 COMMISSION OF SAN DIEGO**  
**A PROPOSITION 10 COMMISSION**  
**Statistical Section (Unaudited)**  
**For the Fiscal Year Ended June 30, 2021**

**Net Position by Component**  
**Last Ten Fiscal Years\***

	<u>2021</u>	<u>2020</u>	<u>2019</u>	<u>2018</u>	<u>2017</u>	<u>2016</u>	<u>2015</u>	<u>2014</u>	<u>2013</u>	<u>2012</u>
Restricted	\$ -	\$ -	\$ -	\$ -	\$ -	\$ -	\$ -	\$ -	\$ -	\$ 557,910
Unrestricted	42,119,960	40,449,779	46,523,865	55,106,348	65,232,870	73,239,274	79,330,400	100,898,266	127,377,162	143,546,761
Extraordinary Expense – AB99**										<u>(88,374,589)</u>
<b>Total net position</b>	<b><u>\$ 42,119,960</u></b>	<b><u>\$ 40,449,779</u></b>	<b><u>\$ 46,523,865</u></b>	<b><u>\$ 55,106,348</u></b>	<b><u>\$ 65,232,870</u></b>	<b><u>\$ 73,239,274</u></b>	<b><u>\$ 79,330,400</u></b>	<b><u>\$100,898,266</u></b>	<b><u>\$127,377,162</u></b>	<b><u>\$ 144,104,671</u></b>

\* Governmental Accounting Standards Board (GASB) Statement 63 was implemented by the Commission in fiscal year ended June 30, 2013. Net Position was reported as net assets prior to GASB 63 implementation.

\*\* This line was added to show the effect of Assembly Bill No. AB99 on Net Position.

**FIRST 5 COMMISSION OF SAN DIEGO**  
**A PROPOSITION 10 COMMISSION**  
**Statistical Section (Unaudited)**  
**For the Fiscal Year Ended June 30, 2021**

	<b>Changes in Net Position Last Ten Fiscal Years*</b>									
	<u>2021</u>	<u>2020</u>	<u>2019</u>	<u>2018</u>	<u>2017</u>	<u>2016</u>	<u>2015</u>	<u>2014</u>	<u>2013</u>	<u>2012</u>
Prop 10 tobacco taxes (see page 15) Prop	\$ 28,636,321	\$ 27,663,745	\$ 26,411,158	\$ 25,589,026	\$ 17,887,814	\$ 21,643,265	\$ 18,440,315	\$ 13,579,043	\$ 18,461,833	\$ 22,614,591
10 school readiness	-	-	-	-	-	-	-	-	-	-
Prop 10 childcare retention	-	-	-	-	-	-	-	-	-	-
10 special needs demonstration project Prop	-	-	-	-	-	-	-	-	-	-
10 quality preschool initiative Prop 10	-	-	-	-	10,769,855	7,877,537	11,728,390	15,962,144	13,426,675	-
power of preschool – bridge Prop 10	-	-	-	-	-	-	-	-	-	12,290,550
preschool for all/power	-	-	-	-	-	-	-	-	-	-
Prop 10 child signature program	-	-	-	-	1,677,313	3,454,625	3,354,625	3,354,625	3,354,625	-
CDE QRIS Certification Grant Federal	34,396	181,918	-	189,959	-	-	-	-	-	-
Medi-Cal administrative activities The	-	-	-	-	-	-	-	93,553	75,833	92,431
California Endowment grant	-	-	-	-	-	-	-	-	-	426,283
Race to the Top	-	-	-	-	-	1,830,888	2,245,507	1,657,897	1,018,700	-
F5CA IMPACT Grant	-	2,173,883	1,599,578	1,587,196	1,607,269	-	-	-	-	-
F5CA IMPACT Hub Grant	544,079	541,277	339,197	400,661	250,321	-	-	-	-	-
F5CA Home Visiting Coordination Grant	35,153	-	-	-	-	-	-	-	-	-
CalWORKs Home Visiting Program	2,453,747	-	-	-	-	-	-	-	-	-
Cal-Learn Educational Support Services	717,980	-	-	-	-	-	-	-	-	-
CA Home Visiting Program	164,941	-	-	-	-	-	-	-	-	-
Interest revenue	413,747	955,100	1,021,281	784,637	828,087	578,755	443,268	658,242	777,073	782,814
Other miscellaneous	-	-	-	-	-	43,146	-	-	-	-
Net increase (decrease) in FMV	-	-	206,530	248,038	25,604	(79,750)	(3,050)	(74,500)	(347,800)	7,054
<b>Total revenues</b>	<b>\$ 33,000,364</b>	<b>\$ 31,515,923</b>	<b>\$ 29,756,783</b>	<b>\$ 28,799,517</b>	<b>\$ 33,046,263</b>	<b>\$ 35,348,466</b>	<b>\$ 36,309,055</b>	<b>\$ 35,231,004</b>	<b>\$ 36,766,939</b>	<b>\$ 36,213,723</b>
Labor and benefits	\$ 2,015,727	\$ 2,074,074	\$ 2,053,585	\$ 2,226,197	\$ 2,123,804	\$ 2,542,561	\$ 3,033,480	\$ 2,735,486	\$ 2,836,095	\$ 2,234,344
Services and supplies	574,392	723,356	654,081	632,742	627,523	623,890	622,703	628,161	619,849	820,809
Evaluation	880,360	864,294	824,939	873,122	842,058	821,321	1,189,466	1,283,035	1,416,937	1,290,408
Contributions to community projects	27,771,134	33,893,728	34,809,655	35,183,575	37,461,932	7,512,258	53,010,552	57,085,235	48,634,245	45,435,941
<b>Total expenses</b>	<b>\$ 31,241,613</b>	<b>\$ 37,555,452</b>	<b>\$ 38,342,260</b>	<b>\$ 38,915,636</b>	<b>\$ 41,055,317</b>	<b>\$ 41,500,030</b>	<b>\$ 57,856,201</b>	<b>\$ 61,731,917</b>	<b>\$ 53,507,126</b>	<b>\$ 49,781,502</b>
<b>Extraordinary Expense-AB99</b>	<b>-</b>	<b>-</b>	<b>-</b>	<b>-</b>	<b>-</b>	<b>-</b>	<b>-</b>	<b>-</b>	<b>-</b>	<b>\$(88,374,589)</b>
<b>Excess of revenues over expenses</b>	<b>\$ 1,758,751</b>	<b>\$ (6,039,529)</b>	<b>\$ (8,585,477)</b>	<b>\$ (10,116,119)</b>	<b>\$ (8,009,054)</b>	<b>\$ (6,151,564)</b>	<b>\$ (21,547,146)</b>	<b>\$ (26,500,913)</b>	<b>\$ (16,740,187)</b>	<b>\$ 74,806,810</b>
Compensated absences	(14,127)	(34,557)	2,994	(10,403)	2,650	60,438	(20,720)	22,017	12,678	(50,580)
Adjustment for reallocation	-	-	-	-	-	-	-	-	-	-
<b>Change in net position</b>	<b>\$ 1,744,624</b>	<b>\$ (6,074,086)</b>	<b>\$ (8,582,483)</b>	<b>\$ (10,126,522)</b>	<b>\$ (8,006,404)</b>	<b>\$ (6,091,126)</b>	<b>\$ (21,567,866)</b>	<b>\$ (26,478,896)</b>	<b>\$ (16,727,509)</b>	<b>\$ 74,756,230</b>

\* Governmental Accounting Standards Board (GASB) Statement 63 was implemented by the Commission in fiscal year ended June 30, 2013. Net Position was reported as net assets prior to GASB 63 implementation.

**FIRST 5 COMMISSION OF SAN DIEGO**  
**A PROPOSITION 10 COMMISSION**  
 Statistical Section (Unaudited)  
 For the Fiscal Year Ended June 30, 2021

**Fund Balance – General Fund**  
**Last Ten Fiscal Years\***

	<u>2021*</u>	<u>2020*</u>	<u>2019*</u>	<u>2018*</u>	<u>2017*</u>	<u>2016*</u>	<u>2015*</u>	<u>2014*</u>	<u>2013*</u>	<u>2012*</u>
<b>Fund Balance</b>										
Non-spendable	\$ 2,196	\$ 2,081	\$ 1,946	\$ 1,895	\$ 1,889	\$ 32,325	\$ 2,816	\$ 1,914	\$ 1,730	\$ 1,671
Committed	42,221,595	40,537,402	46,577,066	55,162,594	65,278,719	73,257,337	79,438,411	100,986,459	127,487,556	143,669,892
Restricted	-	-	-	-	-	-	-	-	-	557,910
Unassigned										
Extraordinary Expense – AB99										(88,374,589)
<b>Total Fund Balance</b>	<b><u>\$ 42,223,791</u></b>	<b><u>\$ 40,539,483</u></b>	<b><u>\$ 46,579,012</u></b>	<b><u>\$ 55,164,489</u></b>	<b><u>\$ 65,280,608</u></b>	<b><u>\$ 73,289,662</u></b>	<b><u>\$ 79,441,227</u></b>	<b><u>\$ 100,988,373</u></b>	<b><u>\$127,489,286</u></b>	<b><u>\$144,229,473</u></b>

\* Fund balance presentation changed in fiscal year 2010-2011 due to the implementation of GASB 54.

**FIRST 5 COMMISSION OF SAN DIEGO**  
**A PROPOSITION 10 COMMISSION**  
**Statistical Section (Unaudited)**  
**For the Fiscal Year Ended June 30, 2021**  
**Changes in Fund balances – General Fund Last 10 Fiscal Years**

	2021	2020	2019	2018	2017	2016	2015	2014	2013	2012
<b>Revenues</b>										
Prop 10 tobacco taxes	\$28,636,321	\$27,663,745	\$ 26,411,158	\$ 25,589,026	\$17,887,814	\$ 21,643,265	\$ 18,440,315	\$ 13,579,043	\$ 18,461,833	\$ 22,614,591
Prop 10 school readiness	-	-	-	-	-	-	-	-	-	-
Prop 10 childcare retention	-	-	-	-	-	-	-	-	-	-
Prop 10 special needs demonstration project	-	-	-	-	-	-	-	-	-	-
Prop 10 quality preschool initiative	-	-	-	-	10,769,855	7,877,537	11,728,390	15,962,144	13,426,675	-
Prop 10 power of preschool – bridge	-	-	-	-	-	-	-	-	-	12,290,550
Prop 10 preschool for all/power	-	-	-	-	-	-	-	-	-	-
Prop 10 child signature program	-	-	-	-	1,677,313	3,454,625	3,354,625	3,354,625	3,354,625	-
CDE QRIS Certification Grant	34,396	181,918	179,039	189,959	-	-	-	-	-	-
Federal Medi-Cal administrative	-	-	-	-	-	-	-	93,553	75,833	92,431
The California Endowment grant	-	-	-	-	-	-	-	-	-	426,283
Race to the Top	-	-	-	-	-	1,830,888	2,245,507	1,657,897	1,018,700	-
F5CA IMPACT Grant	-	2,173,883	1,599,578	1,587,196	1,607,269	-	-	-	-	-
F5CA IMPACT Hub Grant	544,079	541,277	339,197	400,661	250,321	-	-	-	-	-
F5CA Home Visiting Coordination Grant	35,153	-	-	-	-	-	-	-	-	-
CalWORKs Home Visiting Program	2,453,747	-	-	-	-	-	-	-	-	-
Cal-Learn Educational Support Services	717,980	-	-	-	-	-	-	-	-	-
CA Home Visiting Program	164,941	-	-	-	-	-	-	-	-	-
Interest revenue	413,747	955,100	1,021,281	784,637	828,087	578,755	443,268	658,242	777,073	782,814
Other miscellaneous	-	-	-	-	-	43,146	-	-	-	-
Net increase (decrease) in FMV	-	-	206,530	248,038	25,604	(79,750)	(3,050)	(74,500)	(347,800)	7,054
<b>Total revenues</b>	<b>\$ 33,000,364</b>	<b>\$ 31,515,923</b>	<b>\$ 29,756,783</b>	<b>\$ 28,799,517</b>	<b>\$ 33,046,263</b>	<b>\$35,348,466</b>	<b>\$ 36,209,055</b>	<b>\$ 35,231,004</b>	<b>\$ 36,766,939</b>	<b>\$ 36,213,723</b>
<b>Expenditures</b>										
Labor & benefits	\$ 2,015,727	\$ 2,074,074	\$ 2,053,585	\$ 2,226,197	\$ 2,123,804	\$ 2,542,561	\$ 3,033,480	\$ 2,735,486	\$ 2,836,095	\$ 2,234,344
Services & supplies	574,392	723,356	654,081	632,742	627,523	623,890	622,703	628,161	619,849	820,809
Evaluation	880,360	864,294	824,939	873,122	842,058	821,321	1,189,466	1,283,035	1,416,937	1,290,408
Contributions to community projects	27,771,134	33,893,728	34,809,655	35,183,575	37,461,932	37,512,258	53,010,552	57,085,235	48,634,245	45,435,941
<b>Total expenditures</b>	<b>\$ 31,241,613</b>	<b>\$ 37,555,452</b>	<b>\$ 38,342,260</b>	<b>\$ 38,915,636</b>	<b>\$ 41,055,317</b>	<b>\$41,500,030</b>	<b>\$ 57,856,201</b>	<b>\$ 61,731,917</b>	<b>\$ 53,507,126</b>	<b>\$ 49,781,502</b>
Extraordinary Expense-AB99	-	-	-	-	-	-	-	-	-	(88,374,589)
<b>Excess of revenues over expenditures</b>	<b>\$ 1,758,751</b>	<b>\$ (6,039,529)</b>	<b>\$ (8,585,477)</b>	<b>\$ (10,116,119)</b>	<b>\$ (8,009,054)</b>	<b>\$ (6,151,564)</b>	<b>\$ (21,647,146)</b>	<b>\$ (26,500,913)</b>	<b>\$ (16,740,187)</b>	<b>\$ 74,806,810</b>

**FIRST 5 COMMISSION OF SAN DIEGO**  
**A PROPOSITION 10 COMMISSION**  
 Statistical Section (Unaudited)  
 For the Fiscal Year Ended June 30, 2021

**Revenue Projections**

FIRST 5 CALIFORNIA COUNTY TAX REVENUE PROJECTIONS FOR FY 2021-22 THROUGH 2025-26  
 UTILIZING DOF MAY REVISE 2021 TOBACCO TAX PROJECTIONS AND  
 DOF BIRTH PROJECTIONS FOR CALIFORNIA STATE AND COUNTIES 1990 – 2040

	County	2019 Births <sup>1</sup>	2019 Birthrate	2021-22 TAX REVENUE PROJECTION	2020 Births <sup>1</sup>	2020 Birthrate	2022-23 TAX REVENUE PROJECTION	2021 Births <sup>1</sup>	2021 Birthrate	2023-24 TAX REVENUE PROJECTION	2022 Births <sup>1</sup>	2022 Birthrate	2024-25 TAX REVENUE PROJECTION	2023 Births <sup>1</sup>	2023 Birthrate	2025-26 TAX REVENUE PROJECTION
1	Alameda	18,197	4.075%	\$12,947,266	18,082	4.028%	\$12,308,053	17,678	4.046%	\$12,239,662	17,492	4.000%	\$11,798,058	17,302	3.974%	\$11,433,440
2	Alpine	17	0.004%	\$12,096	6	0.001%	\$4,150	12	0.003%	\$8,308	4	0.001%	\$2,698	7	0.002%	\$4,626
3	Amador	314	0.070%	\$223,413	321	0.072%	\$222,049	336	0.077%	\$232,635	301	0.066%	\$203,019	330	0.076%	\$218,069
4	Butte	2,149	0.481%	\$1,529,025	2,083	0.464%	\$1,440,896	1,814	0.438%	\$1,325,190	1,958	0.448%	\$1,320,638	1,989	0.457%	\$1,314,363
5	Calaveras	401	0.090%	\$285,314	392	0.087%	\$271,162	396	0.091%	\$274,177	415	0.095%	\$279,910	411	0.094%	\$271,595
6	Colusa	249	0.056%	\$177,165	253	0.056%	\$175,010	256	0.059%	\$177,246	273	0.062%	\$184,134	246	0.057%	\$162,561
7	Contra Costa	11,811	2.645%	\$8,403,591	11,999	2.674%	\$8,300,195	11,898	2.723%	\$8,237,781	12,011	2.747%	\$8,101,217	12,118	2.784%	\$8,007,770
8	Del Norte	281	0.083%	\$199,933	235	0.052%	\$162,559	239	0.055%	\$165,476	250	0.057%	\$168,621	249	0.057%	\$164,543
9	El Dorado	1,531	0.343%	\$1,089,315	1,577	0.351%	\$1,090,875	1,748	0.400%	\$1,210,257	1,718	0.393%	\$1,158,762	1,789	0.406%	\$1,168,984
10	Fresno	14,051	3.147%	\$9,997,364	14,367	3.202%	\$9,938,237	14,115	3.231%	\$9,772,759	14,098	3.224%	\$9,508,863	14,157	3.252%	\$9,355,174
11	Glenn	398	0.089%	\$283,179	398	0.089%	\$275,313	367	0.084%	\$254,099	391	0.089%	\$263,723	413	0.095%	\$272,917
12	Humboldt	1,406	0.315%	\$1,000,377	1,371	0.306%	\$948,376	1,277	0.292%	\$884,153	1,287	0.294%	\$868,060	1,208	0.277%	\$798,266
13	Imperial	2,618	0.586%	\$1,862,721	2,553	0.569%	\$1,766,014	2,509	0.574%	\$1,737,149	2,497	0.571%	\$1,684,184	2,513	0.577%	\$1,660,631
14	Inyo	191	0.043%	\$135,898	177	0.039%	\$122,438	178	0.040%	\$121,857	168	0.038%	\$113,313	179	0.041%	\$118,286
15	Kern	12,772	2.860%	\$9,087,348	13,068	2.912%	\$9,039,666	12,809	2.932%	\$8,868,528	12,819	2.931%	\$8,646,199	12,818	2.944%	\$8,470,341
16	Kings	2,101	0.470%	\$1,494,873	2,206	0.492%	\$1,525,980	2,149	0.492%	\$1,487,896	2,166	0.496%	\$1,460,930	2,119	0.487%	\$1,400,269
17	Lake	732	0.164%	\$520,822	729	0.162%	\$504,279	701	0.160%	\$485,349	682	0.156%	\$459,997	717	0.165%	\$473,805
18	Lassen	284	0.064%	\$202,068	245	0.055%	\$169,476	241	0.055%	\$166,860	261	0.060%	\$176,040	241	0.055%	\$159,257
19	Los Angeles	106,987	23.959%	\$76,121,839	106,450	23.721%	\$73,635,786	102,129	23.377%	\$70,710,739	101,442	23.197%	\$68,420,915	100,114	22.967%	\$66,156,945
20	Madera	2,066	0.463%	\$1,469,970	2,117	0.472%	\$1,464,415	2,032	0.465%	\$1,406,890	1,968	0.450%	\$1,327,383	1,942	0.446%	\$1,283,305
21	Marin	2,083	0.466%	\$1,482,066	2,059	0.458%	\$1,424,294	1,945	0.445%	\$1,346,654	1,975	0.452%	\$1,332,104	1,901	0.437%	\$1,256,211
22	Mariposa	132	0.030%	\$93,919	156	0.035%	\$107,912	135	0.031%	\$93,470	150	0.034%	\$101,172	146	0.034%	\$96,479
23	Mendocino	928	0.207%	\$658,854	950	0.212%	\$657,154	845	0.193%	\$585,050	929	0.212%	\$626,595	876	0.201%	\$578,875
24	Merced	3,851	0.862%	\$2,740,008	4,029	0.898%	\$2,787,023	4,017	0.919%	\$2,781,238	4,180	0.951%	\$2,805,850	4,213	0.968%	\$2,784,018
25	Modoc	89	0.020%	\$63,324	29	0.008%	\$20,060	39	0.009%	\$27,002	47	0.011%	\$31,701	60	0.014%	\$39,649
26	Mono	128	0.029%	\$91,073	99	0.022%	\$68,482	101	0.023%	\$69,929	111	0.025%	\$74,868	108	0.026%	\$71,368
27	Monterey	5,882	1.317%	\$4,185,075	5,777	1.287%	\$3,996,185	5,555	1.272%	\$3,846,098	5,551	1.269%	\$3,744,056	5,428	1.247%	\$3,586,910
28	Napa	1,294	0.290%	\$920,688	1,278	0.285%	\$884,044	1,251	0.286%	\$866,151	1,300	0.297%	\$876,828	1,272	0.292%	\$846,558
29	Nevada	812	0.182%	\$577,742	828	0.185%	\$572,761	783	0.179%	\$542,123	883	0.202%	\$595,569	842	0.193%	\$556,407
30	Orange	34,909	7.518%	\$24,837,945	35,201	7.844%	\$24,349,961	34,169	7.521%	\$23,657,485	34,514	7.892%	\$23,279,110	34,680	7.962%	\$22,903,887
31	Placer	3,660	0.820%	\$2,604,110	3,759	0.838%	\$2,600,253	3,717	0.851%	\$2,573,528	3,932	0.895%	\$2,652,068	4,072	0.935%	\$2,690,843
32	Plumas	162	0.036%	\$115,264	149	0.033%	\$103,069	153	0.035%	\$105,932	159	0.036%	\$107,243	157	0.036%	\$103,748
33	Riverside	28,255	8.327%	\$20,103,588	28,908	8.442%	\$19,996,837	28,562	8.538%	\$19,775,383	29,093	8.653%	\$19,622,737	28,909	8.655%	\$19,143,182
34	Sacramento	18,988	4.252%	\$13,510,066	19,130	4.263%	\$13,232,998	18,755	4.233%	\$12,985,341	18,717	4.280%	\$12,624,300	18,666	4.265%	\$12,268,712
35	San Benito	791	0.177%	\$562,801	802	0.179%	\$554,776	818	0.187%	\$568,356	789	0.180%	\$532,167	837	0.192%	\$553,103
36	San Bernardino	28,688	6.424%	\$20,411,670	29,035	6.470%	\$20,084,688	28,594	6.545%	\$19,797,539	28,770	6.579%	\$19,404,879	28,772	6.609%	\$19,013,001
37	San Diego	38,645	8.654%	\$27,496,130	38,936	8.676%	\$26,933,612	37,782	8.648%	\$26,159,006	37,531	8.582%	\$25,314,025	37,124	8.528%	\$24,532,137
38	San Francisco	8,396	1.880%	\$5,973,800	8,346	1.860%	\$5,773,267	8,286	1.897%	\$5,736,952	8,099	1.852%	\$5,462,639	8,020	1.842%	\$5,299,745
39	San Joaquin	10,076	2.256%	\$7,169,129	10,184	2.269%	\$7,044,686	10,272	2.351%	\$7,111,993	10,287	2.352%	\$6,938,408	10,631	2.442%	\$7,025,136
40	San Luis Obispo	2,464	0.552%	\$1,753,150	2,522	0.562%	\$1,744,570	2,422	0.554%	\$1,676,913	2,541	0.581%	\$1,713,862	2,517	0.578%	\$1,663,274
41	San Mateo	8,253	1.848%	\$5,872,055	8,157	1.818%	\$5,642,528	7,717	1.766%	\$5,342,995	7,487	1.712%	\$5,049,855	7,154	1.643%	\$4,727,478
42	Santa Barbara	5,512	1.234%	\$3,921,818	5,456	1.216%	\$3,774,137	5,440	1.245%	\$3,766,476	5,501	1.258%	\$3,710,332	5,662	1.301%	\$3,741,541
43	Santa Clara	21,100	4.725%	\$15,012,766	20,971	4.673%	\$14,506,492	20,150	4.812%	\$13,951,193	20,022	4.579%	\$13,504,501	19,668	4.518%	\$12,996,931
44	Santa Cruz	2,396	0.536%	\$1,704,056	2,425	0.540%	\$1,677,471	2,389	0.547%	\$1,654,065	2,462	0.563%	\$1,680,577	2,386	0.548%	\$1,576,707
45	Shasta	1,876	0.420%	\$1,334,577	1,876	0.418%	\$1,297,705	1,942	0.445%	\$1,344,577	1,917	0.438%	\$1,292,984	1,883	0.433%	\$1,244,317
46	Sierra	24	0.005%	\$17,076	20	0.004%	\$13,835	20	0.005%	\$13,847	25	0.006%	\$16,862	20	0.005%	\$13,216
47	Siskiyou	434	0.097%	\$308,793	332	0.074%	\$229,658	361	0.083%	\$249,944	369	0.084%	\$248,884	408	0.094%	\$269,613
48	Solano	5,053	1.132%	\$3,595,237	5,119	1.141%	\$3,541,020	4,938	1.130%	\$3,418,908	4,886	1.117%	\$3,295,524	4,928	1.132%	\$3,256,502
49	Sonoma	4,377	0.980%	\$3,114,260	4,333	0.966%	\$2,997,312	4,270	0.977%	\$2,956,407	4,155	0.950%	\$2,802,477	4,164	0.957%	\$2,751,638
50	Stanislaus	7,295	1.634%	\$5,190,433	7,469	1.664%	\$5,166,610	7,268	1.664%	\$5,032,123	7,271	1.663%	\$4,904,167	7,322	1.682%	\$4,838,496
51	Sutter	1,255	0.281%	\$892,939	1,249	0.278%	\$863,984	1,218	0.279%	\$843,303	1,320	0.302%	\$890,318	1,343	0.309%	\$887,476
52	Tehama	788	0.176%	\$560,666	803	0.179%	\$555,468	802	0.184%	\$555,278	808	0.185%	\$544,982	819	0.188%	\$541,208
53	Trinity	94	0.021%	\$66,882	108	0.024%	\$74,708	97	0.022%	\$67,160	97	0.022%	\$65,425	127	0.029%	\$83,924
54	Tulare	6,763	1.515%	\$4,811,912	6,944	1.547%	\$4,803,447	6,811	1.559%	\$4,715,711	6,937	1.586%	\$4,678,889	6,927	1.591%	\$4,577,473
55	Tuolumne	466	0.104%	\$331,562	464	0.103%	\$320,968	479	0.110%	\$331,644	436	0.100%	\$294,075	468	0.108%	\$309,262
56	Ventura	8,829	1.977%	\$6,281,882	8,819	1.965%	\$6,100,460	8,379	1.918%	\$5,801,342	8,430	1.928%	\$5,685,893	8,426	1.936%	\$5,568,037
57	Yolo	2,080	0.466%	\$1,479,931	2,203	0.491%	\$1,523,905	2,203	0.504%	\$1,525,284	2,272	0.520%	\$1,532,426	2,324	0.534%	\$1,535,737
58	Yuba	1,167	0.261%	\$830,327	1,200	0.267%	\$830,089	1,212	0.277%	\$839,149	1,170	0.268%	\$789,145	1,286	0.285%	\$849,810
	<b>TOTALS</b>	<b>446,548</b>	<b>100%</b>	<b>\$317,721,358</b>	<b>448,734</b>	<b>100%</b>	<b>\$310,421,358</b>	<b>436,879</b>	<b>100%</b>	<b>\$302,480,558</b>	<b>437,304</b>	<b>100%</b>	<b>\$294,954,158</b>	<b>435,328</b>	<b>100%</b>	<b>\$287,671,758</b>

Source: "First 5 California County Tax Revenue Projections for FY 2021/22 to 2025/26"



**FIRST 5 COMMISSION OF SAN DIEGO**  
**A PROPOSITION 10 COMMISSION**  
Statistical Section (Unaudited)  
For the Fiscal Year Ended June 30, 2021

**Cigarette Tax**

**TABLE 30A—CIGARETTE TAXES AND OTHER TOBACCO PRODUCTS SURTAX REVENUE, 1959-60 TO 2019-20**

Fiscal Year From	Fiscal Year To	Cigarette Tax Revenue	Cigarette Tax Distributors' Discount	Gross Value Of Cigarette Tax Indicia	Cigarette Tax Refunds	Other Tobacco Products Surtax Revenue	Other Tobacco Products Surtax Rate
2019	2020	1,708,597,000	5,075,000	1,713,672,000	1,191,000	258,560,000	59.27%
2018	2019	1,786,074,000	5,305,000	1,791,379,000	3,659,000	271,772,000	62.78%
2017	2018	1,882,025,000	5,590,000	1,887,615,000	1,033,000	211,440,000	65.08%
2016	2017	950,676,000	6,091,000	956,768,000	1,185,000	95,330,000	27.30%
2015	2016	741,937,000	6,360,000	748,297,000	1,262,000	101,427,000	28.13%
2014	2015	748,022,000	6,413,000	754,434,000	837,000	86,949,000	28.95%
2013	2014	751,513,000	6,443,000	757,956,000	600,000	86,424,000	29.82%
2012	2013	782,115,000	6,705,000	788,820,000	498,000	82,548,000	30.68%
2011	2012	820,322,000	7,032,000	827,355,000	1,017,000	80,424,000	31.73%
2010	2011	828,831,000	7,105,000	835,937,000	1,308,000	77,016,000	33.02%
2009	2010	838,709,000	7,187,000	845,896,000	1,583,000	84,617,000	41.11%
2008	2009	912,724,000	7,819,000	920,543,000	626,000	85,506,000	45.13%
2007	2008	955,030,000	8,185,000	963,215,000	727,000	85,929,000	45.13%
2006	2007	998,723,000	8,558,000	1,007,281,000	1,330,000	79,946,000	46.76%
2005	2006	1,026,497,000	8,795,000	1,035,293,000	1,707,000	67,348,000	46.76%
2004	2005	1,024,272,000	8,778,000	1,033,051,000	1,653,000	58,441,000	46.76%
2003	2004	1,021,366,000	8,755,000	1,030,121,000	4,721,000	44,166,000	46.76%
2002	2003	1,031,772,000	8,845,000	1,040,617,000	13,248,000	40,996,000	48.89%
2001	2002	1,067,004,000	9,146,000	1,076,150,000	10,774,000	50,037,000	52.65%
2000	2001	1,110,692,000	9,503,000	1,120,195,000	8,741,000	52,834,000	54.89%
1999	2000	1,166,880,000	9,980,000	1,176,859,000	9,413,000	66,884,000	66.50%
1998	1999	841,911,000	7,206,000	849,117,000	6,808,000	42,137,000	61.53%
1997	1998	612,066,000	5,244,000	617,309,000	5,448,000	39,617,000	29.37%
1996	1997	629,579,000	5,394,000	634,973,000	5,060,000	41,590,000	30.38%
1995	1996	639,030,000	5,469,000	644,499,000	6,193,000	32,788,000	31.20%
1994	1995	656,923,000	5,628,000	662,551,000	11,159,000	28,460,000	31.20%
1993	1994	647,993,000	5,553,000	653,546,000	8,353,000	19,773,000	23.03%
1992	1993	667,479,000	5,715,000	673,195,000	9,138,000	21,480,000	26.82%
1991	1992	711,275,000	6,086,000	717,362,000	7,791,000	22,016,000	29.35%
1990	1991	729,612,000	6,242,000	735,854,000	7,904,000	24,064,000	34.17%
1989	1990	770,042,000	6,581,000	776,623,000	11,615,000	24,956,000	37.47%
1988	1989	499,712,000	4,273,000	503,984,000	4,968,000	9,994,000	41.67%
1987	1988	254,869,000	2,180,000	257,049,000	2,970,000	-	0
1986	1987	257,337,000	2,202,000	259,539,000	2,661,000	-	0
1985	1986	260,960,000	2,231,000	263,190,000	2,834,000	-	0
1984	1985	265,070,000	2,267,000	267,337,000	2,390,000	-	0
1983	1984	265,265,000	2,267,000	267,532,000	2,756,000	-	0
1982	1983	273,748,000	2,336,000	276,084,000	2,060,000	-	0
1981	1982	278,667,000	2,383,000	281,050,000	1,843,000	-	0
1980	1981	280,087,000	2,395,000	282,482,000	1,567,000	-	0
1979	1980	272,119,000	2,327,000	274,446,000	1,645,000	-	0
1978	1979	270,658,000	2,315,000	272,973,000	1,408,000	-	0
1977	1978	275,042,000	2,352,000	277,394,000	1,239,000	-	0
1976	1977	270,502,000	2,315,000	272,817,000	832,000	-	0
1975	1976	269,852,000	2,309,000	272,161,000	927,000	-	0
1974	1975	264,182,000	2,262,000	266,444,000	745,000	-	0
1973	1974	259,738,000	2,222,000	261,960,000	632,000	-	0
1972	1973	253,089,000	2,167,000	255,256,000	626,000	-	0
1971	1972	248,398,000	2,127,000	250,525,000	677,000	-	0
1970	1971	240,372,000	2,058,000	242,430,000	552,000	-	0
1969	1970	237,220,000	2,032,000	239,253,000	455,000	-	0
1968	1969	238,836,000	2,046,000	240,882,000	492,000	-	0
1967	1968	208,125,000	1,862,000	209,987,000	328,000	-	0
1966	1967	75,659,000	1,543,000	77,202,000	129,000	-	0
1965	1966	74,880,000	1,528,000	76,407,000	88,000	-	0
1964	1965	74,487,000	1,520,000	76,007,000	61,000	-	0
1963	1964	71,530,000	1,459,000	72,989,000	71,000	-	0
1962	1963	70,829,000	1,445,000	72,274,000	79,000	-	0
1961	1962	68,203,000	1,390,000	69,593,000	47,000	-	0
1960	1961	66,051,000	1,675,000	67,726,000	76,000	-	0
1959	1960	61,791,000	767,000	62,558,000	67,000	-	0

**FIRST 5 COMMISSION OF SAN DIEGO**  
**A PROPOSITION 10 COMMISSION**  
 Statistical Section (Unaudited)  
 For the Fiscal Year Ended June 30, 2021

**California Live Births Data**

TABLE: LIVE BIRTHS, CALIFORNIA COUNTIES, 2010-2019 (By Place of Residence)

COUNTY	2019	2018	2017	2016	2015	2014	2013	2012	2011	2010
<b>CALIFORNIA</b>	<b>464,300</b>	<b>454,244</b>	<b>485,901</b>	<b>488,490</b>	<b>491,789</b>	<b>502,973</b>	<b>494,390</b>	<b>503,788</b>	<b>502,023</b>	<b>509,979</b>
ALAMEDA	18,875	18,225	19,551	19,559	19,440	19,657	19,050	19,550	19,002	19,302
ALPINE	6	10	5	4	5	6	6	8	6	4
AMADOR	327	305	309	308	305	291	269	285	269	272
BUTTE	2,394	2,419	2,430	2,493	2,444	2,482	2,372	2,397	2,392	2,454
CALAVERAS	370	375	381	373	379	348	328	347	326	346
COLUSA	284	267	311	315	300	285	306	314	302	338
CONTRA COSTA	12,567	11,995	12,927	12,342	12,600	12,560	12,173	12,061	12,057	12,352
DEL NORTE	254	269	315	308	300	324	317	302	337	372
EL DORADO	1,764	1,678	1,590	1,599	1,598	1,618	1,561	1,513	1,629	1,618
FRESNO	14,891	14,413	15,116	15,098	15,363	15,796	15,939	15,953	16,157	16,281
GLENN	402	365	380	379	374	416	391	368	391	434
HUMBOLDT	1,336	1,365	1,521	1,487	1,446	1,474	1,455	1,511	1,448	1,551
IMPERIAL	2,958	2,628	3,108	2,976	3,216	3,270	3,139	3,041	3,075	3,072
INYO	199	176	199	182	202	226	219	219	213	192
KERN	13,415	12,874	13,732	13,721	13,770	14,199	14,514	14,558	14,287	14,416
KINGS	2,369	2,256	2,216	2,247	2,277	2,342	2,417	2,357	2,565	2,507
LAKE	697	714	726	752	723	748	726	739	715	721
LASSEN	328	307	296	302	295	326	298	298	300	322
LOS ANGELES	111,500	110,167	121,413	122,958	124,442	130,150	127,194	131,697	130,312	133,160
MADERA	2,090	2,076	2,257	2,347	2,223	2,313	2,339	2,258	2,401	2,434
MARIN	1,799	2,122	2,239	2,258	2,287	2,403	2,310	2,306	2,385	2,368
MARIPOSA	155	154	157	148	167	138	137	161	132	145
MENDOCINO	918	896	994	1,023	1,052	1,020	1,077	1,153	1,061	1,059
MERCED	4,305	3,870	4,073	4,109	4,106	4,158	4,279	4,311	4,281	4,248
MODOC	105	100	88	105	79	90	72	76	87	119
MONO	137	129	134	132	152	149	142	131	156	151
MONTEREY	5,904	5,887	6,304	6,213	6,428	6,458	6,552	6,652	6,814	6,764
NAPA	1,334	1,206	1,441	1,408	1,456	1,478	1,501	1,431	1,572	1,525
NEVADA	832	772	823	776	875	817	812	810	761	793
ORANGE	37,250	35,643	36,693	38,107	37,622	38,610	37,429	38,186	38,100	38,237
PLACER	3,792	3,664	3,820	3,734	3,747	3,644	3,806	3,648	3,832	3,824
PLUMAS	185	168	172	172	162	147	156	151	165	170
RIVERSIDE	30,001	28,684	30,596	30,629	30,511	30,271	30,540	30,316	30,610	30,659
SACRAMENTO	19,362	19,052	19,540	19,598	19,431	19,886	19,439	19,618	19,998	20,055
SAN BENITO	781	772	755	780	718	697	763	701	772	735
SAN BERNARDINO	30,354	28,964	30,217	31,120	30,619	31,306	30,265	30,691	30,573	31,367
<b>SAN DIEGO</b>	<b>39,258</b>	<b>40,008</b>	<b>42,574</b>	<b>42,578</b>	<b>43,960</b>	<b>44,596</b>	<b>42,676</b>	<b>44,391</b>	<b>43,621</b>	<b>44,838</b>
SAN FRANCISCO	8,924	8,690	9,077	9,065	8,970	9,102	8,768	9,070	8,813	8,800
SAN JOAQUIN	10,010	9,811	10,411	10,234	9,988	10,095	10,179	10,129	10,328	10,593
SAN LUIS OBISPO	2,419	2,433	2,749	2,574	2,670	2,595	2,580	2,580	2,632	2,736
SAN MATEO	8,192	8,326	8,975	8,961	9,039	9,098	8,815	9,182	9,047	9,193
SANTA BARBARA	5,557	5,256	5,396	5,493	5,675	5,829	5,664	5,584	5,803	5,819
SANTA CLARA	20,871	21,267	22,958	23,011	23,394	23,759	23,224	24,308	23,652	23,936
SANTA CRUZ	2,460	2,447	2,688	2,804	2,843	3,047	3,005	3,084	3,232	3,190
SHASTA	2,085	1,961	1,996	2,056	2,075	2,083	2,051	2,110	2,021	2,136
SIERRA	32	26	28	34	30	21	19	19	23	23
SISKIYOU	456	438	458	458	467	451	482	501	472	434
SOLANO	5,241	5,039	5,192	5,253	5,134	5,251	5,161	5,061	5,158	5,047
SONOMA	4,244	4,525	5,101	4,964	5,016	5,075	5,157	5,144	5,150	5,391
STANISLAUS	7,552	7,339	7,790	7,867	7,701	7,521	7,644	7,592	7,737	7,804
SUTTER	1,383	1,266	1,396	1,363	1,303	1,317	1,290	1,258	1,326	1,360
TEHAMA	802	731	840	787	826	787	751	767	728	767
TRINITY	127	113	104	115	103	112	108	125	123	107
TULARE	7,315	6,900	7,380	7,149	7,411	7,618	7,854	8,000	7,966	8,155
TUOLUMNE	473	450	441	456	467	454	444	459	430	487
VENTURA	9,300	9,025	9,975	9,580	10,062	10,471	10,565	10,641	10,656	11,147
YOLO	2,134	2,127	2,372	2,423	2,400	2,395	243	2,452	2,340	2,426
YUBA	1,225	1,099	1,171	1,238	1,156	1,193	1,232	1,213	1,282	1,223

\*latest data available

**FIRST 5 COMMISSION OF SAN DIEGO**  
**A PROPOSITION 10 COMMISSION**  
**Statistical Section (Unaudited)**  
**For the Fiscal Year Ended June 30, 2021**

**Demographic Data**

	Percentage										
Demographic		2019	2018	2017	2016	2015	2014	2013	2012	2011	2010
Total Population		3,316,073	3,302,833	3,283,665	3,337,685	3,223,096	3,183,143	3,211,252	3,177,063	3,140,069	3,095,313
White	70.7%	2,345,667	2,335,447	2,324,835	1,395,152	1,518,174	1,510,851	1,510,757	1,509,733	1,502,204	1,506,581
Hispanic	33.7%	1,117,517	1,106,925	1,096,744	1,131,475	1,102,256	1,039,752	1,057,428	1,037,685	1,021,896	991,353
Asian	11.9%	394,742	390,418	384,189	417,211	379,566	351,811	356,394	356,437	340,979	330,644
Pacific Islander	0.4%	13,867	13,903	13,135	20,026	13,579	13,400	14,008	15,207	11,802	13,658
Black	5.0%	166,750	166,412	164,183	183,573	160,385	150,600	154,477	153,435	146,766	147,967
American Indian & Alaskan Native	0.7%	22,524	20,980	19,702	43,390	10,330	11,620	11,962	12,433	12,004	14,239
Multi-race or other race	5.2%	173,794	170,366	167,467	146,858	106,204	100,430	106,226	92,133	104,418	90,871
Female	49.7%	1,646,558	1,640,902	1,631,982	1,658,829	1,604,151	1,595,992	1,595,992	1,579,000	1,563,754	1,541,466
Male	50.3%	1,669,515	1,661,931	1,651,683	1,678,856	1,618,151	1,633,360	1,615,260	1,598,063	1,576,315	1,553,847
Under 5 years	6.3%	209,680	211,969	213,438	212,336	210,874	206,904	208,731	209,686	207,245	203,423
5-14 years	11.9%	395,673	395,874	397,323	398,130	394,489	703,475	517,012	517,861	521,251	520,169
15-24 years	14%	464,149	471,614	476,131	471,120	489,299	371,733	366,083	371,716	367,388	368,453
25-34 years	16.5%	545,838	541,385	535,237	544,111	512,116	525,589	510,589	495,622	483,571	470,629
35-44 years	13.3%	441,301	436,855	433,444	434,625	427,056	425,285	423,885	422,549	420,769	417,993
45-54 years	12.5%	415,472	420,221	423,593	424,672	428,074	425,285	423,885	425,726	430,189	430,378
55-64 years	11.7%	389,871	385,320	380,905	388,177	363,514	370,871	362,871	352,654	345,408	331,298
65-74 years	7.9%	261,738	251,516	239,708	258,784	217,961	416,991	218,365	203,332	188,404	182,678
75+ years	5.8%	192,351	188,079	183,885	185,794	179,713	185,030	179,830	174,738	172,704	170,293

Source: US Census Bureau, American Community Survey



**FIRST 5 COMMISSION OF SAN DIEGO**  
**A PROPOSITION 10 COMMISSION**  
Statistical Section (Unaudited)  
For the Fiscal Year Ended June 30, 2021

**Income Data**

2019 American Community Survey (1-year estimates)  
**INCOME (IN 2019 INFLATION-ADJUSTED DOLLARS)**  
California, Counties, and Places of 65,000+ population

Geography	Median household income (dollars) - Estimate	Median household income (dollars) - Margin of Error	Mean household income (dollars) - Estimate	Mean household income (dollars) - Margin of Error	Median family income (dollars) - Estimate	Median family income (dollars) - Margin of Error	Mean family income (dollars) - Estimate	Mean family income (dollars) - Margin of Error	Per capita income (dollars) - Estimate	Per capita income (dollars) - Margin of Error
California	\$80,440	+/- \$313	\$113,563	+/- \$505	\$91,377	+/- \$376	\$126,354	+/- \$636	\$39,393	+/- \$176
San Diego County	\$83,985	+/- \$1,908	\$112,786	+/- \$1,727	\$96,164	+/- \$1,431	\$126,563	+/- \$2,053	\$40,389	+/- \$608

2019 American Community Survey (1-year estimates)  
**PERCENTAGE OF FAMILIES AND PEOPLE WHOSE INCOME IN THE PAST 12 MONTHS IS BELOW THE POVERTY LEVEL**  
California, Counties, and Places of 65,000+ population

Geography	All families - Percent	All families - Percent Margin of Error	Married couple families - Percent	Married couple families - Percent Margin of Error	Families with female householder, no spouse present - Percent	Families with female householder, no spouse present - Percent Margin of Error
California	8.2	+/- 0.2	4.9	+/- 0.1	20.2	+/- 0.6
San Diego County	6.8	+/- 0.6	4.3	+/- 0.5	17.6	+/- 2.3

**FIRST 5 COMMISSION OF SAN DIEGO**  
**A PROPOSITION 10 COMMISSION**  
Statistical Section (Unaudited)  
For the Fiscal Year Ended June 30, 2021

**Employment Status**

2019 American Community Survey (1-year estimates)  
**EMPLOYMENT**  
**STATUS**  
California, Counties, and Places of 65,000+ population

Geography	Population 16 years and over - Estimate	Total - Estimate	Total - Percent (Labor Force Participation Rate)	Civilian labor force - Total Civilian labor force - Estimate	Civilian labor force - Total Civilian labor force - Percent	Civilian labor force - Employed - Estimate	Civilian labor force - Employed - Percent	Civilian labor force - Unemployed - Estimate	Civilian labor force - Unemployed - Percent	Civilian labor force - Unemployment Rate - Percent	Armed Forces - Estimate	Armed Forces - Percent	Not in labor force - Estimate	Not in labor force - Percent
California	31,617,786	20,246,507	64.0	20,095,761	63.6	19,078,101	60.3	1,017,660	3.2	5.1	150,746	0.5	11,371,279	36.0
San Diego County	2,702,171	1,802,924	66.7	1,721,606	63.7	1,624,854	60.1	96,752	3.6	5.6	81,318	3.0	899,247	33.3

**FIRST 5 COMMISSION OF SAN DIEGO  
A PROPOSITION 10 COMMISSION  
Statistical Section (Unaudited)  
For the Fiscal Year Ended June 30, 2021**

**Capital Assets**

The First 5 Commission of San Diego has no capital assets.

This Page Intentionally Left Blank

## **COMPLIANCE SECTION**



MOSS, LEVY & HARTZHEIM LLP

CERTIFIED PUBLIC ACCOUNTANTS

**PARTNERS**

RONALD A LEVY, CPA  
CRAIG A HARTZHEIM, CPA  
HADLEY Y HUI, CPA  
ALEXANDER C HOM, CPA  
ADAM V GUISE, CPA  
TRAVIS J HOLE, CPA

**COMMERCIAL ACCOUNTING & TAX SERVICES**

9465 WILSHIRE BLVD., 3<sup>RD</sup> FLOOR  
BEVERLY HILLS, CA 90212  
TEL: 310.273.2745  
FAX: 310.670.1689  
www.mlhcpas.com

**GOVERNMENTAL AUDIT SERVICES**

5800 HANNUM AVE., SUITE E  
CULVER CITY, CA 90230  
TEL: 310.670.2745  
FAX: 310.670.1689  
www.mlhcpas.com

**INDEPENDENT AUDITOR'S REPORT ON INTERNAL CONTROL OVER FINANCIAL REPORTING  
AND ON COMPLIANCE AND OTHER MATTERS BASED ON AN AUDIT OF FINANCIAL  
STATEMENTS PERFORMED IN ACCORDANCE WITH *GOVERNMENT AUDITING STANDARDS***

Board of Commissioners  
First 5 Commission of San Diego  
San Diego, California

We have audited, in accordance with the auditing standards generally accepted in the United States of America and the standards applicable to financial audits contained in *Government Auditing Standards* issued by the Comptroller General of the United States, the financial statements of the governmental activities and major fund of the First 5 Commission of San Diego (the Commission), a discretely presented component unit of the County of San Diego, California, as of and for the fiscal year ended June 30, 2021, and the related notes to the financial statements, which collectively comprise the First 5 Commission of San Diego's basic financial statements, and have issued our report thereon dated September 15, 2021.

**Internal Control over Financial Reporting**

In planning and performing our audit of the financial statements, we considered the Commission's internal control over financial reporting (internal control) to determine the audit procedures that are appropriate in the circumstances for the purpose of expressing our opinions on the financial statements, but not for the purpose of expressing an opinion on the effectiveness of the Commission's internal control. Accordingly, we do not express an opinion on the effectiveness of the Commission's internal control.

A *deficiency in internal control* exists when the design or operation of a control does not allow management or employees, in the normal course of performing their assigned functions, to prevent, or detect and correct, misstatements on a timely basis. A *material weakness* is a deficiency, or a combination of deficiencies, in internal control, such that there is a reasonable possibility that a material misstatement of the entity's financial statements will not be prevented, or detected and corrected on a timely basis. A *significant deficiency* is a deficiency, or a combination of deficiencies, in internal control that is less severe than a material weakness, yet important enough to merit attention by those charged with governance.

Our consideration of internal control was for the limited purpose described in the first paragraph of this section and was not designed to identify all deficiencies in internal control that might be material weaknesses or, significant deficiencies. Given these limitations, during our audit we did not identify any deficiencies in internal control that we consider to be material weaknesses. However, material weaknesses may exist that have not been identified.

## Compliance and Other Matters

As part of obtaining reasonable assurance about whether the Commission's financial statements are free from material misstatement, we performed tests of its compliance with certain provisions of laws, regulations, contracts, and grant agreements, noncompliance with which could have a direct and material effect on the determination of financial statement amounts. However, providing an opinion on compliance with those provisions was not an objective of our audit, and accordingly, we do not express such an opinion. The results of our tests disclosed no instances of noncompliance that are required to be reported under *Government Auditing Standards*.

## Purpose of this Report

The purpose of this report is solely to describe the scope of our testing of internal control and compliance and the results of that testing, and not to provide an opinion on the effectiveness of the Commission's internal control or on compliance. This report is an integral part of an audit performed in accordance with *Government Auditing Standards* in considering the entity's internal control and compliance. Accordingly, this communication is not suitable for any other purpose.



Moss, Levy & Hartzheim, LLP  
Culver City, CA  
September 15, 2021



MOSS, LEVY & HARTZHEIM LLP

CERTIFIED PUBLIC ACCOUNTANTS

**PARTNERS**

RONALD A LEVY, CPA  
CRAIG A HARTZHEIM, CPA  
HADLEY Y HUI, CPA  
ALEXANDER C HOM, CPA  
ADAM V GUISE, CPA  
TRAVIS J HOLE, CPA

**COMMERCIAL ACCOUNTING & TAX SERVICES**

9465 WILSHIRE BLVD., 3<sup>RD</sup> FLOOR  
BEVERLY HILLS, CA 90212  
TEL: 310.273.2745  
FAX: 310.670.1689  
www.mlhcpas.com

**GOVERNMENTAL AUDIT SERVICES**

5800 HANNUM AVE., SUITE E  
CULVER CITY, CA 90230  
TEL: 310.670.2745  
FAX: 310.670.1689  
www.mlhcpas.com

## INDEPENDENT AUDITOR'S REPORT ON STATE COMPLIANCE

Board of Commissioners  
First 5 Commission of San Diego  
San Diego, California

### Compliance

We have audited the First 5 Commission of San Diego's (the Commission), a discretely presented component unit of the County of San Diego, California, compliance with the requirements specified in the State of California's *Standards and Procedures for Audits of Local Entities Administering the California Children and Families Act*, issued by the State Controller's Office, applicable to the Commission's statutory requirements identified below for the fiscal year ended June 30, 2021.

### Management's Responsibility

Management is responsible for compliance with the requirements of laws and regulations to the California Children and Families Act.

### Auditor's Responsibility

Our responsibility is to express an opinion on the Commission's compliance with the requirements referred to above based on our audit.

We conducted our audit of compliance in accordance with auditing standards generally accepted in the United States of America; the standards applicable to financial audits contained in *Government Auditing Standards* issued by the Comptroller General of the United States; and the State of California's *Standards and Procedures for Audits of Local Entities Administering the California Children and Families Act (First 5)*, issued by the State Controller's Office. Those standards and the State of California's *Standards and Procedures for Audits of Local Entities Administering the California Children and Families Act* require that we plan and perform the audit to obtain reasonable assurance about whether noncompliance with the requirements referred to above could have a direct and material effect on the statutory requirements listed below. An audit includes examining, on a test basis, evidence about the Commission's compliance with those requirements and performing such other procedures as we considered necessary in the circumstances.



We believe that our audit provides a reasonable basis for our opinion on compliance. However, our audit does not provide a legal determination of the Commission's compliance with those requirements. In connection with the audit referred to above, we selected and tested transactions and records to determine the Commission's compliance with the state laws and regulations applicable to the following items:

<u>Description</u>	<u>Audit Guide Procedures</u>	<u>Procedures Performed</u>
Contracting and Procurement	6	Yes
Administrative Costs	3	Yes
Conflict-of-Interest	3	Yes
County Ordinance	4	Yes
Long-range Financial Plans	2	Yes
Financial Condition of the Commission	1	Yes
Program Evaluation	3	Yes
Salaries and Benefit Policies	2	Yes

## Opinion

In our opinion, the First 5 Commission of San Diego complied, in all material respects, with the compliance requirements referred to above that could have a direct and material effect on the California Children and Families Program for the fiscal year ended June 30, 2021.

*Moss, Levy & Hartzheim*

Moss, Levy & Hartzheim, LLP  
Culver City, California  
September 15, 2021