

# County of San Diego

## Capital Program

Capital Program	421
.....	
2014–15 CAO Recommended Capital Program Budget at a Glance	423
.....	
2014–19 Capital Improvement Needs Assessment	426
.....	
2014–16 Operating Impact of Capital Program	433
.....	
2014–16 Capital Appropriations	435
.....	
Capital Program Summary: All Capital Funds	437
.....	
Summary of Capital Program Funds	439
.....	
Outstanding Capital Projects by Fund	441
.....	



# Capital Program

## Capital Program Introduction

To provide a formal groundwork for funding the Capital Program, the Board of Supervisors adopted Policy B-37, *Use of the Capital Program Funds*. This policy establishes the funding methods, administration and control, and allowable uses of the Capital Program Funds. The Capital Program does not include appropriations for recurring capital expenses appropriated in departmental operating budgets nor recurring appropriations for capital projects, which are managed and accounted for in the enterprise funds or special revenue funds (i.e. roads/airports). See departmental operational plan narratives beginning on page 113 for amounts appropriated for recurring capital assets.

The Chief Administrative Officer (CAO) established County of San Diego CAO Administrative Manual, Policy 0030-23, *Use of the Capital Program Funds, Capital Project Development and Budget Procedures*, to set forth procedures for developing the scope of capital projects, monitoring the expenditure of funds for capital projects, timely capitalization of assets, and the closure of capital projects within the capital program funds.

The Capital Program is composed of the following major funds:

### Capital Outlay Fund

The Capital Outlay Fund was established in Fiscal Year 1979–80 to provide centralized budgeting and accounting for the County's capital projects, and currently is used to account for the funding of land acquisitions and capital projects that do not fall within the scope of any of the other capital program funds (listed below). Capital projects that are funded through the Capital Outlay Fund include the purchase or construction of buildings for the delivery of County services and the acquisition and development of open space and parkland, outside of the Multiple Species Conservation Program (MSCP) (see adjacent description).

### County Health Complex Fund

The County Health Complex Fund contains budgeted amounts for capital projects related to the Rosecrans Health Complex and other County health facilities excluding the County's Edgemoor property (see adjacent description).

### Justice Facility Construction Fund

The Justice Facility Construction Fund contains budgeted amounts for capital projects related to the County's justice and public safety capital improvements, including detention facilities, Sheriff's stations and other criminal justice facilities.



### Library Projects Fund

The Library Projects Fund contains budgeted amounts for the acquisition and construction of County Library facilities.

### Multiple Species Conservation Program Fund

The Multiple Species Conservation Program Fund was established in Fiscal Year 2010–11. This fund contains budgeted amounts for the improvement and acquisition of land related to the MSCP. The MSCP seeks to preserve San Diego's natural areas, native plants and animals, and refine the development process, thereby conserving the quality of life for current and future generations.

### Edgemoor Development Fund

In 1979, the Board of Supervisors approved Board Policy F-38, *Edgemoor Property Development*, which provides guidelines for the use, development and disposition of the County property located within the City of Santee, known as the Edgemoor property. The Edgemoor Development Fund was established pursuant to this policy and all of its revenues, mainly produced by the Edgemoor property itself and the lease and sale of land, are to assist in the reconstruction of the Edgemoor Skilled Nursing Facility. As a fund established to account for the financial resources to be used for the acquisition or construction of a major capital facility, it is included in the Capital Program. A portion of the cost of replacing the Edgemoor Skilled Nursing Facility was funded by certificates of participation (COPs) executed and delivered in January 2005 and December 2006. The Edgemoor Development Fund provides funding for the principal and interest payments related to the COPs.

### Capital Program Funds are used for:

- The acquisition and construction of new public improvements, including buildings and initial furnishings and equipment.
- Land and permanent on-site and off-site improvements necessary for the completion of a capital project.

- The replacement or reconstruction of permanent public improvements which will extend the useful life of a structure, including changes in the use of a facility.

The following restrictions apply, and the following expenses are not to be funded from the Capital Program Funds:

- Roads, bridges, or other similar infrastructure projects that are provided for through special revenue funds, such as the Road Fund, or enterprise funds.
- Expenditures which do not extend the useful life of a structure or will only bring the facility to a sound condition. These are considered maintenance expenses, which are budgeted within departments.
- Feasibility studies, facility master plans, or other analytical or research activities that do not relate directly to the implementation of a capital project.
- Furnishings or equipment not considered a permanent component of the facility or other short-lived general fixed assets.

The Board of Supervisors may appropriate funding from any legal source to the Capital Program Funds for present or future capital projects. The Board of Supervisors has jurisdiction over the acquisition, use and disposal of County-owned real property and County-leased property under the authority of Government Code §23004. All proceeds from the sale of fixed assets (land and structures) are allocated to the Capital Program Funds unless otherwise specifically directed by the Board of Supervisors. Administrative policies and procedures have been established to provide appropriate controls on the scope of projects and expenditure of funds.

The County's capital improvements planning process is outlined in Board of Supervisors' Policy G-16, *Capital Facilities and Space Planning*. The process reflects the goals of the County's Five-Year Strategic Plan and identifies the Department of General Services (DGS) as steward for the management and planning of the County's capital facilities. DGS coordinates the implementation of Policy G-16 by setting a schedule, designing a process and creating evalua-

tion criteria for establishing the Capital Improvements Needs Assessment (CINA), as described in the section beginning on page 426.

Once funding is identified, projects are included in the two-year Operational Plan, usually in the year they are to be initiated. In some instances, resources may be accumulated over time and the project is started only after all the funding has been identified. Each organizational Group is responsible for identifying funding sources for its projects. Any long-term financing obligations required for implementation of the CINA must first be approved by the Debt Advisory Committee and then by the Board of Supervisors, as required by Board of Supervisors Policy B-65, *Long-Term Financial Obligation Management Policy*.

The Board of Supervisors or the CAO also may recommend mid-year adjustments to the budget as circumstances warrant to meet emergent requirements or to benefit from unique development or purchase opportunities. A budget adjustment may be made if the project request meets at least one of the following criteria:

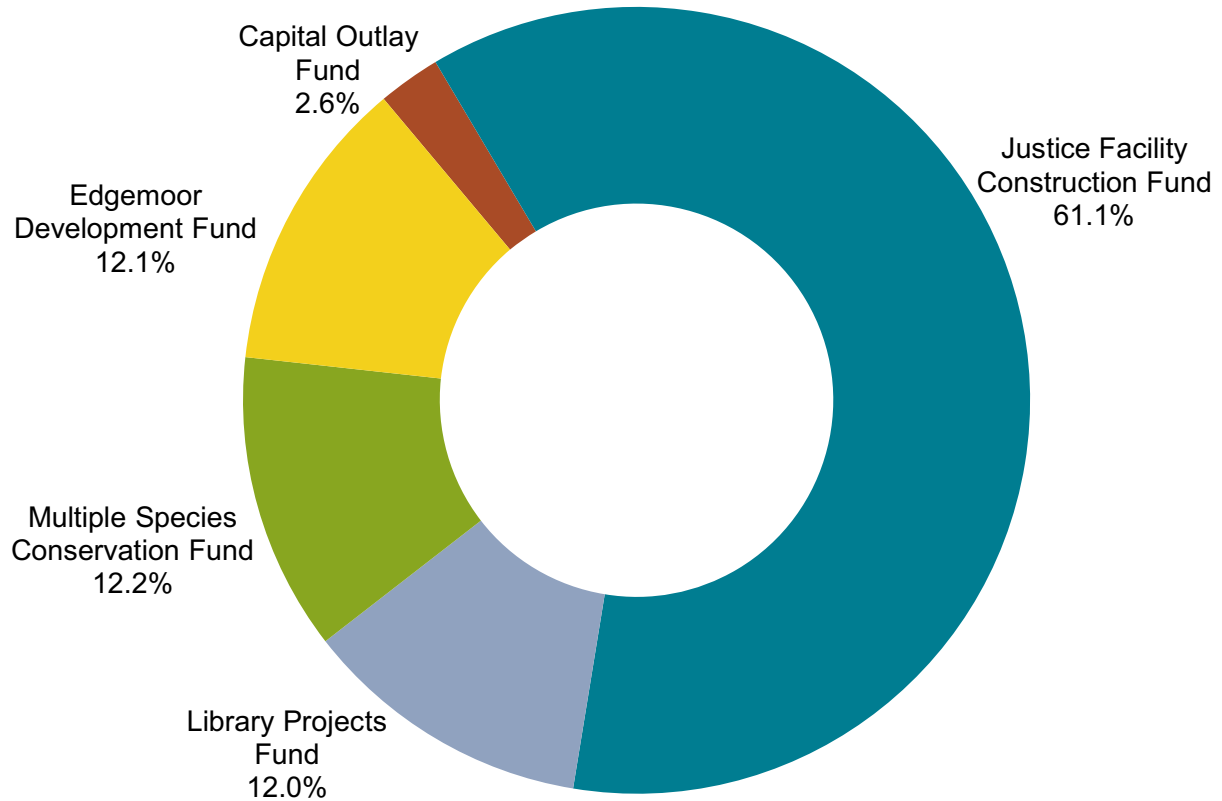
- Public or employee health/safety is threatened by existing or imminent conditions.
- The County will face financial harm (property damage, loss of revenue, litigation, etc.) if prompt action is not taken.
- The Board of Supervisors has approved a new program or program change which specifically includes additional space and funding for space-related costs.

Any appropriations remaining in the capital project at the end of the fiscal year automatically carry forward into the next fiscal year along with any related encumbrances, until the project is completed.

The tables beginning on page 441 provide information for the County's current outstanding capital projects. The Finance Other section of the Operational Plan contains detailed information regarding lease payments that are used to repay long-term financing of capital projects.

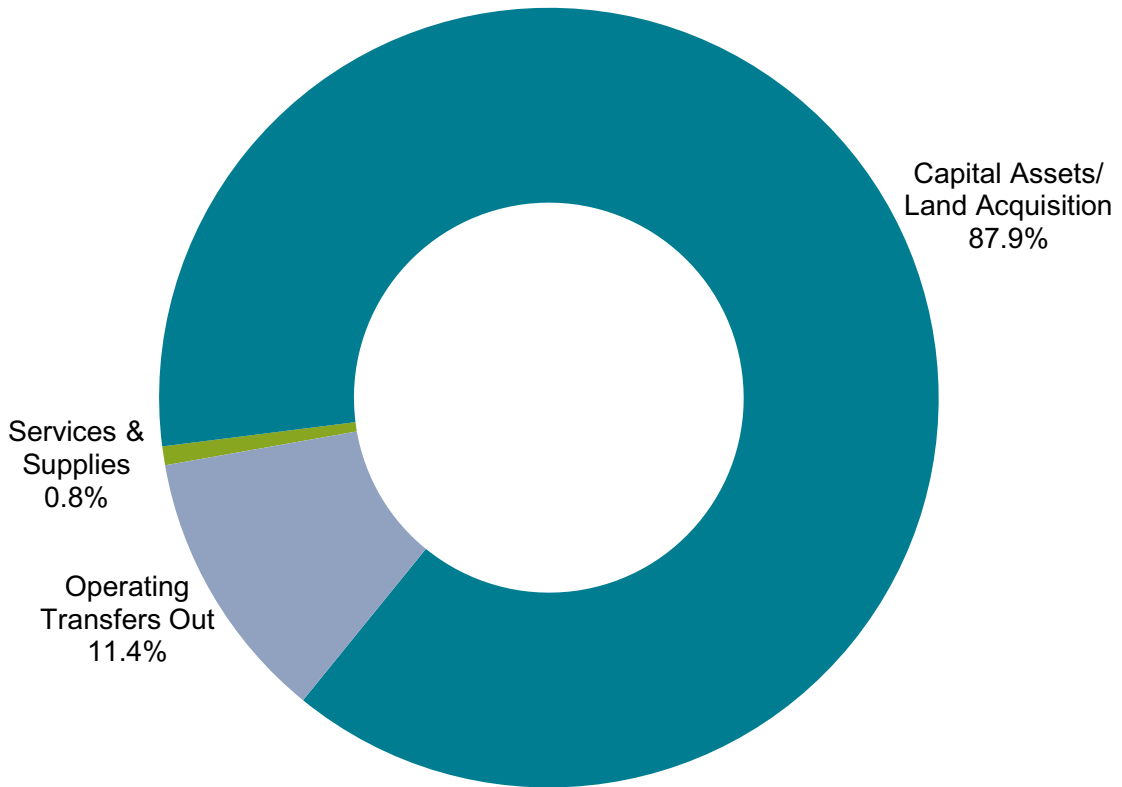
## 2014–15 CAO Recommended Capital Program Budget at a Glance

**Capital Program by Fund**  
Fiscal Year 2014–15: \$81.7 million



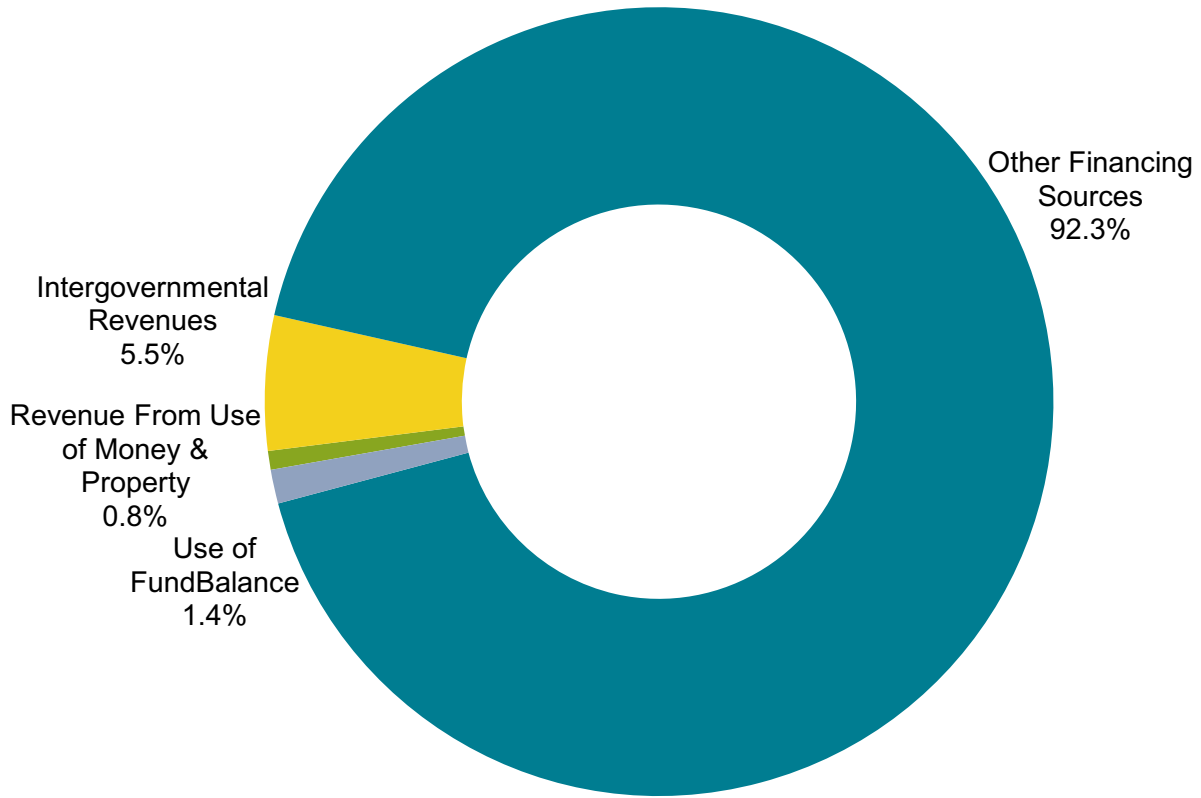
Recommended Budget by Fund: Capital Program		
	Budget in Millions	Percent of Total Capital Budget
Capital Outlay Fund	\$ 2.1	2.6
Justice Facility Construction Fund	49.9	61.1
Library Projects Fund	9.8	12.0
Multiple Species Conservation Program Fund	10.0	12.2
Edgemoor Development Fund	9.9	12.1
<b>Total</b>	<b>\$ 81.7</b>	<b>100.0</b>

### Capital Program by Categories of Expenditures Fiscal Year 2014–15: \$81.7 million



Recommended Budget by Categories of Expenditure: Capital Program		
	Budget in Millions	Percent of Total Capital Budget
Services & Supplies	\$ 0.6	0.8
Capital Assets/Land Acquisition	71.8	87.9
Operating Transfers Out	9.3	11.4
<b>Total</b>	<b>\$ 81.7</b>	<b>100.0</b>

### Capital Program by Categories of Revenues Fiscal Year 2014–15: \$81.7 million



Recommended Budget by Categories of Revenues: Capital Program		
	Budget in Millions	Percent of Total Capital Budget
Revenue From Use of Money & Property	\$ 0.6	0.8
Intergovernmental Revenues	4.5	5.5
Other Financing Sources	75.4	92.3
Use of Fund Balance	1.1	1.4
<b>Total</b>	<b>\$ 81.7</b>	<b>100.0</b>



## 2014–19 Capital Improvement Needs Assessment

The County's capital improvement planning process is outlined in Board of Supervisors' Policy G-16, *Capital Facilities and Space Planning*. The process reflects the goals of the County's Five-Year Strategic Plan and identifies the Department of General Services as steward for the management and planning of the County's capital facilities. DGS coordinates the implementation of Policy G-16 by setting a schedule, designating a process and providing evaluation criteria for establishing the Capital Improvements Needs Assessment.

In accordance with Policy G-16, the CINA is prepared and presented annually to the Board of Supervisors to guide the development and funding of both immediate and long-term capital projects. The CINA includes a comprehensive list of all current and anticipated capital projects over a five-year period. Funded projects are given first priority, followed by partially funded projects and, finally, unfunded projects. Preparation of the CINA involves the following process:

- A “Call for Projects” begins in August when departments submit projects, including a description, estimated costs and level of available funding. This is an opportunity for departments to submit high priority capital projects for review and evaluation. Capital requests are defined, per the County of San Diego CAO Administrative Manual, Policy 0050-01-06 *Capital, Space and Maintenance Requests*, as those projects which improve or enhance an existing facility or space within it. The definition includes projects that increase the value or extend the useful life of a structure, such as construction of walls or partitions, construction or change of public counter areas, installation of water tanks on County property, development of parkland, and construction of new transit centers.
  - The Facilities Planning Board (FPB), which consists of the Director of the Office of Financial Planning, the five Group Finance Directors and the Director of DGS, reviews and prioritizes the projects, using the Capital Improvement Plan Prioritization Score Sheet (shown on the next page). In order to plan effectively for the County's overall capital needs and to make efficient use of resources, capital projects are prioritized using specific criteria including but not limited to:
    - Strategic Plan linkage
    - Critical need: life, safety and emergency
    - State/federal mandates: legally binding commitments
    - Operating budget impacts: quantifiable reduced operating costs
    - Maintenance budget impacts: quantifiable reduced maintenance costs
    - Customer service benefits
    - Quality of life
- The Facilities Planning Board makes a presentation providing recommendations to the Group General Managers who then either concur with or modify the recommendations.
  - The CINA is then presented to the CAO for final review and approval before presentation to the Board of Supervisors, which accepts the CINA and refers to the CAO the responsibility of determining project timing and the funding mechanisms to carry out the CINA.

The County owns extensive land and facility assets throughout the region and employs a strategy to manage and plan for current and long-term capital and space needs. The Board, through its policies and commitment to capital investment and facility management, has shown that San Diego County is a leader in managing its capital assets in replacing outdated and functionally obsolete buildings. The County is also committed to the MSCP land acquisition program, as well as maintaining and expanding its park facilities.

Over the next ten years, the County will continue to take a proactive approach to maintain the physical environment, modernize and replace aging facilities, and maximize the public return on investments. To the greatest practical extent, the County will improve the sustainability of its own operations by reducing, reusing and recycling resources, and using environmentally friendly practices in maintenance and replacement of infrastructure. Although all or partial funding has been identified for some capital projects, others will be financed by non-County sources, such as State-wide bonds, State and federal grants.



The following table shows the Capital Improvement Plan Prioritization Score Sheet and the criteria used by the FPB to assess the capital projects presented in the CINA.

Capital Improvement Plan Prioritization Score Sheet					
Weighted Value	Criteria	Score			
		3	2	1	0
5	Strategic Plan Linkage	Project clearly supports a County Strategic Initiative	There is a CAO approved goal that includes the project	There is a department approved goal or plan that includes the project	There is no plan linkage
5	Critical Need: Life, Safety, Emergency	Project needed to correct an existing deficiency	Project needed to correct a potential deficiency	Project promotes or maintains health/safety	No health or safety impacts
5	Quality of Life	Project provides a measurable benefit to the Quality of Life for all county residents	Project provides a measurable benefit to the Quality of Life for a majority of county residents	Project provides a minimal benefit to the Quality of Life for all county residents or a measurable benefit to a smaller population	No measurable Quality of Life Benefits
4	State/Federal Mandate-Legally Binding Commitment	Projects with enforceable sanctions or with a legally binding commitment to complete work, with State or federal funding	Projects with enforceable sanctions or with a legally binding commitment to complete work, without State or federal funding	Projects that have an agreement by the Board of Supervisors to complete work	No mandate or commitment
3	Operating Budget Impacts	Project results in quantifiable reduced operating costs	Project has minimal or no new operating costs	Project has minor added operating costs	Project requires significant added operating costs
3	Maintenance Budget Impacts	Project results in quantifiable reduced maintenance costs	Project has minimal or no new maintenance costs	Project has minor added maintenance costs	Project requires significant added maintenance costs
3	Customer Service Benefits	Customer service level is significantly increased	Customer service level is moderately increased	Customer service level is maintained	Customer service level is decreased

The County defines major capital projects as those with an estimated cost exceeding \$10.0 million. This list reflects the current status of the County's major capital project priorities. The total estimated cost of these projects is **\$568.6 million**, of which **\$188.5 million** is currently funded. The total project costs are the latest estimates based on preliminary scoping, and are subject to change. Updated estimates will be required before progressing to the implementation/construction bid phase for each project.

### CINA Major Capital Projects (over \$10.0 million)

#### Priority 1:

##### Regional Communications System Replacement

**Scope:** Design, procure and install next generation regional public safety communications system.

**Schedule and Milestones:** Developing Memoranda Of Understanding (MOU) with regional partners, conventional system upgrade targeted for 2014 and microwave upgrade targeted for Fiscal Year 2014–15.

**Basis:** The trunked voice radio system and supporting microwave backhaul network is nearing the end of its useful life and system/equipment support is being phased out.

**Significant Achievements:** Contract for architectural services awarded October 2013. General Services and Sheriff's departments are evaluating site options.

**Estimated Cost:** \$105,000,000

**Funding Source(s):** Federal funding of Homeland Security grants (\$10.0 million); General Fund (\$40.4 million); and contributions of regional partner agencies for their share (\$54.6 million).



#### Priority 2:

##### Multiple Species Conservation Program (MSCP) Land Acquisition

**Scope:** The MSCP is a Habitat Conservation Plan and Natural Community Conservation Plan formed under federal and State law and subject to an Implementing Agreement approved by the Board of Supervisors on October 22, 1997 between the County, U.S. Fish and Wildlife Service and the California Department of Fish and Game.

**Schedule and Milestones:** On-going acquisitions.

**Basis:** The County has a responsibility to acquire open space lands under the Implementation Agreement with the State of California Department of Fish and Game and the U.S. Fish and Wildlife Service.

**Significant Achievements:** The County has purchased 18,679 acres in the south, north and east county. Acquisition of 15,974 acres is projected over the remaining project.

**Estimated Cost:** \$293,869,296

**Funding Source(s):** General Fund leveraged with federal, State and private funding.

**Priority 3:**

**Otay River Valley Active Recreation Site 3**

**Scope:** Project will develop the site as an active recreation park, including multi-use fields, speed soccer arena, zip line adventure course, disc golf course, skate park, community park, drainage improvements, lighting and parking.

**Schedule and Milestones:** Concept plans complete.

**Basis:** As part of the Otay River Valley Park Master Plan, certain parcels in the valley were identified as possible active recreation sites.

**Significant Achievements:** The County has purchased an approximately 46-acre site located east of Interstate 5.

**Estimated Cost:** \$23,790,000

**Funding Source(s):** Funding for completing design and construction has not been identified.



**Priority 4:**

**Tijuana River Valley Active Recreation Site**

**Scope:** County purchased a 64-acre site to be developed as a regional sports complex. Planned elements include baseball and multi-use fields, playgrounds, restrooms and other community park amenities.

**Schedule and Milestones:** Planning

**Basis:** Continued growth and residential expansion in the region supports a new sports complex.

**Significant Achievements:** Final concept plan approved. Hydrology study began in summer 2011.

**Estimated Cost:** \$25,000,000

**Funding Source(s):** Phases will be developed pending available General Fund funds and a partnership with a private entity.



**Priority 5:**

**San Luis Rey River Park Land Acquisition**

**Scope:** Acquisition of approximately 1,600 acres of open space preserve within the proposed San Luis Rey River Valley. Additional 250 acres needed, which includes two active recreation sites (totaling approximately 40–60 acres). Future development of the river park is estimated at \$50 million.

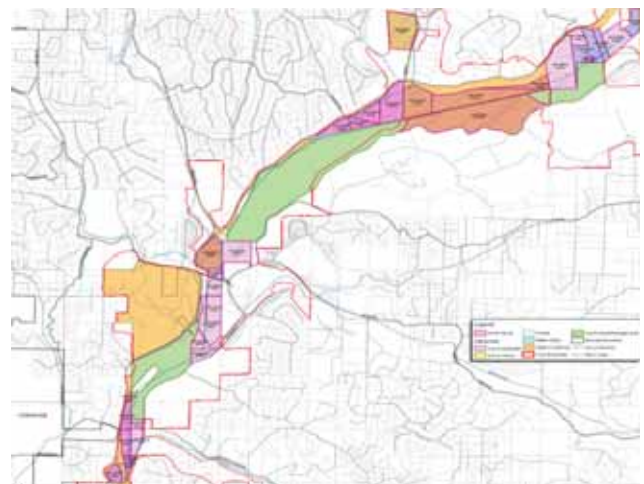
**Schedule and Milestones:** Design

**Basis:** To preserve more than 1,500 acres of land and addresses a deficit of public active recreation and sports fields in north San Diego County.

**Significant Achievements:** Master Plan approved and Program Environmental Impact Report (PEIR) certified on September 24, 2008; 500 acres acquired.

**Estimated Cost:** \$16,091,070

**Funding Source(s):** General Fund, MSCP, and other appropriate grants.



**Priority 6:**

**Sheriff's Crime Lab**

**Scope:** A 150,000-square foot structure to house the County's crime lab, criminal evidence warehouse and central investigations unit offices. Current County Operations Center Master Plan includes relocation of the Fleet Maintenance Facility to accommodate the proposed crime lab site.

**Schedule and Milestones:** To be determined.

**Basis:** Co-location of the crime laboratory, property and evidence facility and central investigations offices will benefit the Sheriff's Department through increased efficiency which will be further enhanced as a result of adjacency to the County Medical Examiner facility.

**Significant Achievements:** Conducting space and needs evaluation.

**Estimated Cost:** \$92,600,000 (Crime Lab Facility); \$12,200,000 (Fleet Relocation)

**Funding Source(s):** General Fund



CINA Major Capital Projects (over \$10,000,000)					
Project Title	Phase	Status	Amount Funded <sup>1</sup>	Estimated Total Project Cost	Rank
Regional Communications System Replacement	Entitlements	Contract for architectural services awarded October 2013. Real Estate Services and Sheriff evaluating site options. Work being done at some sites.	\$ 18,962,388	\$ 105,000,000	1
Multiple Species Conservation Program (MSCP) Land Acquisition	On-going Acquisitions	County has purchased 18,679 acres in south, north and east county. Annual funding included in CAO Recommended Operational Plan Fiscal Year 2014–16.	\$ 158,406,043	\$ 293,869,296	2
Otay Valley River Regional Park Active Recreation Site 3	Design	Concept plans completed.	\$ 420,000	\$ 23,790,000	3
Tijuana River Valley Active Recreation Site	Planning	Final concept plan approved. Hydrology study began in Summer 2011.	\$ 466,603	\$ 25,000,000	4
San Luis Rey River Park Implementation	Design	500 acres currently owned.	\$ 10,217,249	\$ 16,091,070	5
Sheriff's Crime Lab	Planning	Conducting space and needs evaluation.	\$ 75,000	\$ 104,800,000	6
<b>Total Major Projects</b>			<b>\$ 188,547,283</b>	<b>\$ 568,550,366</b>	

<sup>1</sup>Through Fiscal Year 2013–14

Minor capital projects are those projects anticipated to cost less than \$10.0 million. Minor capital needs, including park expansions and improvements, health facilities, and Sheriff’s facilities, are listed, but are not ranked by the Facilities Planning Board. The total estimated cost of these projects is **\$64.8 million**, of which **\$3.9 million** is currently funded. The total project costs are the latest estimates based on preliminary scoping, and are subject to change. Updated estimates will be required before progressing to the implementation/construction bid phase for each project.

CINA Minor Capital Projects (under \$10,000,000)				
Project Title	Phase	Amount Funded <sup>1</sup>	Estimated Total Project Cost	Project Scope
Borrego Springs Community Library Replacement	Planning	\$ 200,000	\$ 9,950,000	Proposed new, larger library to meet increased demands by community. Possible land donation to County.
California Riding and Hiking Trail Acquisition and Improvements	Acquisition	\$ 450,000	\$ 4,000,000	The California Riding and Hiking Trail is 110 mile regional trail routed through National Forests, State Parks, private property, and scenic and historical areas. The project is to preserve this historic trail through the transfer of State trail easements to the County and acquisition of new easements. Project includes construction of new trail segments and major improvements to existing segments.
Corrections Corporation of America (CCA) Renovation	Planning	—	\$ 5,000,000	The CCA detention facility is an existing County-owned property under lease to a private operator. The project will provide 400 beds (2 housing units, support/administration facilities) ready for occupancy within 6 months of taking possession on January 1, 2016.
Don Dussalt Park Improvements	Planning	\$ 330,000	\$ 850,000	Construction of Americans with Disabilities Act (ADA) parking and tot lot play structure, a junior play structure, picnic areas, exercise equipment, paths, landscaping and irrigation.
Guajome Campground Expansion	Planning	—	\$ 1,200,000	Proposed development of 25 new campsites.
Guajome Park Electrical, Water and Sewer	Planning	—	\$ 1,500,000	Upgrade entire electrical distribution system, 3 electrical panels and mini-switches and 50 amp service pedestals to accommodate current Recreational Vehicle (RV) systems. New sewer lines, RV connections and conveyance system.
Heise Park Electrical and Water	Planning	—	\$ 2,000,000	Existing underground electrical needs to be replaced to provide for the increased demands for facility operation. Upgrades include three main electrical pull boxes and 15 electrical connection junction boxes. Upgrade 40 recreation vehicle campsites with new 50 amp service pedestals.
Inmate Court Appearance Facilities	Planning	—	TBD	Feasibility study to determine possible: 1) new courtrooms inside San Diego Central Jail and the new Women’s Detention and Reentry Facility, and 2) the expansion of video arraignment at both of these booking facilities.
Jess Martin Multi-Use Ball Fields Irrigation and Seepage Pit	Design is complete	\$ 280,500	\$ 1,363,500	Project includes a leach field, main waterline booster pump, irrigation system, grading and soil import, Calsense controller, decomposed granite path, trees, landscaping and ballfield turf.
North Coastal Health Facility	Planning	—	\$ 4,250,400	Partial demolition and construction of a peer-centered facility to offer mental health services. The facility will offer a continuum of services aimed at recovery, rehabilitation, wellness, skill development, social rehabilitation, self-help advocacy groups as well as employment screening and job placement opportunities.
Ramona Grasslands Preserve Public Access Construction Phase II and III	Planning	—	\$ 2,200,000	Addition of a 5.5-mile multi-use trail system. Phase II will involve connecting the existing Oak Country II Trail system to Phase I. Phase III, if feasible, will construct 1.3 miles of pathway along the southern portion of Rangeland Road and along Highland Valley Road, ultimately connecting the northwest and northeast portions of the Preserve to the existing Oak Country II staging area.

<sup>1</sup>Through Fiscal Year 2013–14

CINA Minor Capital Projects (under \$10,000,000) (continued)				
Project Title	Phase	Amount Funded <sup>1</sup>	Estimated Total Project Cost	Project Scope
Ramona Intergenerational Community Center (RICC) Land Acquisition	Acquisition	\$ 1,905,000	\$ 4,000,000	Visionary plan includes senior center and community uses. This will provide for the acquisition of the current Cal Trans property adjoining the new library on Main Street.
San Dieguito Park ADA Playground	Planning	—	\$ 650,000	Project will include the design and construction of a fully integrated ADA accessible playground in San Dieguito Park.
San Dieguito Park Porous Paving	Planning	—	\$ 1,200,000	Construct new porous paving access road from the lower part of San Dieguito Park up to the Miracle Field baseball area and porous pave road to the basketball court to improve accessibility for overflow parking.
Santa Ysabel Nature Center	Design	\$ 125,000	\$ 7,249,000	Design and construction of a nature center facility showcasing environmental and cultural education.
Steele Canyon Synthetic Turf Conversion	Planning	—	\$ 1,540,000	Construction of new 225-foot artificial turf baseball field and multi-purpose soccer/football field and other related park improvements.
Stowe Trail Acquisition	Planning	\$ 565,000	\$ 7,500,000	Acquisition of 230 acres of land for the historic Stowe Trail that links the County's Goodan Ranch and Sycamore Canyon preserves and Mission Trails Park.
Sweetwater Loop Trail Acquisition/Construction and Development Phase II	Planning	—	\$ 5,000,000	Construction of equestrian and bikeways segments along the periphery of the Sweetwater Reservoir to integrate and connect trails existing at the Sweetwater Regional Park to new trails being constructed as part of the construction of the State Route 125 Freeway.
Sweetwater Regional Park Photovoltaic Phase II	Planning	—	\$ 600,000	Installation of a grid-tied photovoltaic system designed to offset park electricity consumption. Installation of 210-kilowatt and 25-kilowatt solar panels.
Sweetwater Road Trail	Planning	—	\$ 500,000	Includes the construction of approximately 0.75-mile trail that will connect Sweetwater River Trail to the Sweetwater Loop Trail.
Sweetwater Summit Campground Expansion Phase II	Planning	—	\$ 3,212,000	The project includes the construction of approximately 27 new RV campsites, including the extension of utilities, roads and other camp amenities.
Water Conservation & Sustainable Park Features Future Phases	Planning	—	\$ 1,000,000	Retrofit irrigation controllers with a central "smart" controller system; repair and upgrade outdated or faulty irrigation systems; retrofit water consumptive fixtures and equipment.
<b>Total Minor Capital Projects</b>		<b>\$ 3,855,500</b>	<b>\$ 64,764,900</b>	

<sup>1</sup>Through Fiscal Year 2013–14

## 2014–16 Operating Impact of Capital Program

The County of San Diego considers each capital project in terms of its potential impact on the operating budget. Typical areas of impact include one-time furniture, fixtures and equipment (FF&E) costs, ongoing operations and maintenance costs (O&M), necessary additional staffing (staff years), any anticipated ongoing program revenue related to the project and debt service payments related to any long-term financing of the capital project. More detailed information regarding the debt service payments can be found in the Finance Other section of the Operational Plan in the Lease Payments table on page 461. The following major capital projects are currently in progress and are scheduled for completion during Fiscal Years 2014–16.

2014–16 Operating Impact of Capital Program							
Project Name	Description of Operating Impact	Estimated Total Project Cost	Estimated Completion Date	Estimated FF&E Cost	Estimated Ongoing Annual O&M Costs	Estimated Increase in Staff Years	Estimated Revenue for Ongoing Costs
Alpine Library	The operating impact for the Alpine Library capital project are estimated at \$0.7 million in Fiscal Year 2014–15 including \$0.6 million in one-time costs and \$0.1 million in ongoing maintenance costs. The operating impact for Fiscal Year 2015–16 is estimated at \$0.1 million for ongoing maintenance expenses.	\$ 10,700,000	2015	\$ 560,000	\$ 120,000	—	—
County Administration Center (CAC) Waterfront Park <sup>1</sup>	The operating impact related to the CAC Waterfront Park in Fiscal Year 2014–15 are estimated at \$6.5 million including \$3.7 million for one-time costs related to playground equipment and \$2.8 million for ongoing O&M costs associated with debt service, facility maintenance and Department of Parks and Recreation (DPR) staff years. Operating impact for Fiscal Year 2015–16 is estimated at \$4.6 million including \$2.8 million related to ongoing debt service, facility maintenance and DPR staff years; and an estimated \$1.8 million for the Sheriff staff years, if required. Ongoing costs for Fiscal Years 2014–15 and 2015–16 will be offset with ongoing revenue from the Tax Sharing Agreement with the City of San Diego. Additional revenue of \$0.1 million is anticipated from after hours parking.	\$ 49,400,000	2014	\$ 3,700,000	Fiscal Year 2014–15 \$ 2,822,000	5.00	Fiscal Year 2014–15 \$ 2,922,000
					Fiscal Year 2015–16 \$ 4,622,000		Fiscal Year 2015–16 \$ 4,722,000

<sup>1</sup>Major construction complete and facility became operational in Fiscal Year 2013–14; however, project is not completed until the entire capitalization process occurs.

## 2014–16 Operating Impact of Capital Program

2014–16 Operating Impact of Capital Program							
Project Name	Description of Operating Impact	Estimated Total Project Cost	Estimated Completion Date	Estimated FF&E Cost	Estimated Ongoing Annual O&M Costs	Estimated Increase in Staff Years	Estimated Revenue for Ongoing Costs
Cedar and Kettner Development	The operating impact costs associated with the Cedar and Kettner Development project are estimated at \$2.0 million in both Fiscal Year 2014–15 and Fiscal Year 2015–16 for ongoing expenses including \$1.7 million in debt service and \$0.3 million in O&M costs. Costs will be fully offset with ongoing revenue from the Tax Sharing Agreement with the City of San Diego. Additionally revenue of \$0.2 million is expected from after hours parking.	\$ 36,100,000	2015	—	\$ 1,950,000	—	\$ 2,150,000
East Mesa Reentry Facility <sup>1</sup>	The operating impact related to the East Mesa Reentry Facility project are estimated at \$19.7 million in Fiscal Year 2014–15 including \$1.0 million in one-time expenditures and \$18.9 million in ongoing O&M costs. Operating impact for Fiscal Year 2015–16 is estimated at \$18.9 million in O&M costs. O&M costs in both Fiscal Years supports ongoing facility maintenance and staff years. Costs will be fully offset with State Revenue from Assembly Bill 109, <i>Public Safety Realignment</i> (2011).	\$ 38,040,000	2014	\$ 960,000	\$ 18,900,000	135.00 <sup>2</sup>	\$ 18,900,000
San Diego County Women's Detention and Reentry Facility (WDRF)	The operating impact related to the WDRF capital project are estimated at \$37.0 million in Fiscal Year 2014–15 including \$10.0 million in one-time cost and \$27.0 million in ongoing O&M expenses, including facility maintenance and staff years. Operating impact for Fiscal Year 2015–16 is estimated at \$30.0 million including \$2.5 million in one-time FF&E and \$27.0 million related to ongoing O&M cost, for facility maintenance and staff years.	Fiscal Year 2014–15	Phase 1: 2014 <sup>1</sup>	Fiscal Year 2014–15	\$ 27,000,000	173.00 <sup>2</sup>	—
		\$ 200,000,000		\$ 10,000,000			
		Fiscal Year 2015–16	Phase 2: 2016	Fiscal Year 2015–16			
		\$ 100,000,000		\$ 2,500,000			
	<b>2014–15 Total Operating Impact</b>	—	—	\$ 15,220,000	\$ 50,792,000	313.00 <sup>2</sup>	\$ 23,972,000
	<b>2015–16 Total Operating Impact</b>	—	—	\$ 2,500,000	\$ 52,592,000	313.00 <sup>2</sup>	\$ 25,772,000

<sup>1</sup>Major construction complete and facility became operational in Fiscal Year 2013–14; however, project is not completed until the entire capitalization process occurs.

<sup>2</sup>Includes staff years added in prior fiscal years.



## 2014–15 Capital Appropriations

The Fiscal Years 2014–16 CAO Recommended Operational Plan includes **\$71.8 million** in new appropriations for various capital projects in the Capital Program for Fiscal Year 2014–15 and another \$2.5 million in the Multiple Species Conservation Program Fund (MSCP) in Fiscal Year 2015–16. This excludes the \$9.9 million appropriated in both Fiscal Year 2014–15 and Fiscal Year 2015–16 in the Edgemoor Development Fund to support the costs associated with the Edgemoor Skilled Nursing Facility, including the lease payments related to the long-term financings executed to help fund construction. The following section briefly describes the anticipated cost and purpose of each project.

### Guajome Regional Park Electrical, Water and Sewer

**Fiscal Year 2014–15 Appropriations:** \$1,500,000

**Project Number:** 1018874

**Estimated Total Project Cost:** \$1,500,000

**Funding Source(s):** General Fund

**Scope:** Guajome Park is located in the coastal city of Oceanside. The park's electrical, water and sewer systems were constructed in the 1970's. Funding of \$1.5 million from General Fund fund balance will be used to upgrade the park electrical distribution system and provide 50-amp electrical service to accommodate present-day recreational vehicles (RV). Additionally, the project includes new sewer lines, RV connections, conveyance systems, portable water lines, drinking fountains and stabilization of utility pedestals.

**Schedule and Milestones:** Estimated completion in 2015.



### Sweetwater Regional Photovoltaic Phase II

**Fiscal Year 2014–15 Appropriations:** \$600,000

**Project Number:** 1018875

**Estimated Total Project Cost:** \$600,000

**Funding Source(s):** General Fund

**Scope:** Sweetwater Regional Park is located in the unincorporated community of Bonita. The 540-acre park provides extensive facilities for outdoor recreation, a community building and camping. Funding of \$600,000 from the General Fund fund balance will be used to complete the Sweetwater Regional Photovoltaic Phase II. The project will install 98 additional solar panels that will connect to the existing 250-kilowatt photovoltaic system. The system will provide a clean source of renewable energy.

**Schedule and Milestones:** Estimated completion in 2016.

## 2014–15 Capital Appropriations

### Borrego Springs Community Library

**Fiscal Year 2014–15 Appropriations:** \$9,750,000

**Project Number:** 1018705

**Estimated Total Project Cost:** \$9,950,000

**Funding Source(s):** General Fund

**Scope:** Construction of new, larger library to meet increased demands. Funding in Fiscal Year 2014–15 is based on \$9.7 million of General Fund fund balance and \$0.1 million of General Purpose Revenue.

**Schedule and Milestones:** Site evaluation, scoping and program development. Construction is anticipated to begin in 2015 with estimated completion in 2017.



### Sheriff's Crime Lab

**Fiscal Year 2014–15 Appropriations:** \$49,940,000

**Project Number:** 1018895

**Estimated Total Project Cost:** \$104,800,000

**Funding Source(s):** General Fund

**Scope:** 150,000-square foot structure to house the Crime Lab, criminal evidence warehouse and central investigation unit offices. Current County Operations Center Master Plan includes relocation of the Fleet Maintenance facility to accommodate the proposed crime lab site. Funding in Fiscal Year 2014–15 of \$49.9 million based on General Purpose Revenue.

**Schedule and Milestones:** Conducting space and needs evaluation.

### Multiple Species Conservation Program Land Acquisition

**Fiscal Year 2014–15 Appropriations:** \$10,000,000

**Project Number:** 1015029

**Estimated Total Project Cost:** \$293,869,296

**Funding Source(s):** General Fund

**Scope:** The County of San Diego Multiple Species Conservation Program (MSCP), is an integral part of the County's program to conserve the region's natural environment and increase the amount of land available to the public for parks and open space. The goals of the MSCP are to maintain and cherish the County's unique native habitats and species and promote regional economic viability.

**Schedule and Milestones:** Since 1997, over \$69.0 million from the General Fund has been spent on MSCP land acquisition, which leveraged over \$87.0 million in federal, State and local grants, and was used to acquire more than 18,679 acres throughout the county. Funding in Fiscal Year 2014–15 of \$10.0 million is based on \$2.5 million of General Purpose Revenue and \$7.5 million of General Fund fund balance.



## Capital Program Summary: All Capital Program Funds

Budget by Fund					
	Fiscal Year 2012–13 Adopted Budget	Fiscal Year 2013–14 Adopted Budget	Fiscal Year 2014–15 Recommended Budget	% Change	Fiscal Year 2015–16 Recommended Budget
Capital Outlay Fund	\$ 46,702,282	\$ 20,449,372	\$ 2,100,000	(89.7)	\$ —
Justice Facility Construction Fund	27,600,000	—	49,940,000	—	—
Library Projects Fund	—	18,231,301	9,750,000	(46.8)	—
Multiple Species Conservation Fund	10,000,000	10,000,000	10,000,000	0.0	2,500,000
Edgemoor Development Fund	9,886,883	9,813,933	9,917,783	1.1	9,916,433
<b>Total</b>	<b>\$ 94,189,165</b>	<b>\$ 58,494,606</b>	<b>\$ 81,707,783</b>	<b>39.7</b>	<b>\$ 12,416,433</b>

Budget by Categories of Expenditures					
	Fiscal Year 2012–13 Adopted Budget	Fiscal Year 2013–14 Adopted Budget	Fiscal Year 2014–15 Recommended Budget	% Change	Fiscal Year 2015–16 Recommended Budget
Services & Supplies	\$ 608,000	\$ 533,000	\$ 633,000	18.8	\$ 633,000
Capital Assets/Land Acquisition	84,302,282	48,680,673	71,790,000	47.5	2,500,000
Operating Transfers Out	9,278,883	9,280,933	9,284,783	0.0	9,283,433
<b>Total</b>	<b>\$ 94,189,165</b>	<b>\$ 58,494,606</b>	<b>\$ 81,707,783</b>	<b>39.7</b>	<b>\$ 12,416,433</b>

Budget by Categories of Revenue					
	Fiscal Year 2012–13 Adopted Budget	Fiscal Year 2013–14 Adopted Budget	Fiscal Year 2014–15 Recommended Budget	% Change	Fiscal Year 2015–16 Recommended Budget
Revenue From Use of Money & Property	\$ 7,123,197	\$ 4,518,352	\$ 639,089	(85.9)	\$ 614,472
Intergovernmental Revenues	11,625,968	4,930,509	4,508,008	(8.6)	4,507,352
Other Financing Sources	75,440,000	48,256,301	75,434,000	53.8	3,184,000
Use of Fund Balance	—	789,444	1,126,686	—	4,110,609
<b>Total</b>	<b>\$ 94,189,165</b>	<b>\$ 58,494,606</b>	<b>\$ 81,707,783</b>	<b>39.7</b>	<b>\$ 12,416,433</b>

## Capital Program Summary: All Capital Program Funds

Revenue Detail					
	Fiscal Year 2012–13 Adopted Budget	Fiscal Year 2013–14 Adopted Budget	Fiscal Year 2014–15 Recommended Budget	% Change	Fiscal Year 2015–16 Recommended Budget
Interest on Deposits & Investments	\$ 84,371	\$ 83,352	\$ 392,089	370.4	\$ 367,472
Rents and Concessions	7,038,826	4,435,000	247,000	(94.4)	247,000
Federal Aid HUD CDBG 14.218	362,282	424,372	—	(100.0)	—
Federal Other	4,263,686	4,506,137	4,508,008	0.0	4,507,352
Aid from Redevelopment Agencies	7,000,000	—	—	—	—
Operating Transfer From General Fund	47,600,000	43,856,301	71,790,000	63.7	2,500,000
Operating Transfer From Other/ Special District	—	4,400,000	—	(100.0)	—
Reimbursement from SANCAL - Bond Proceeds	27,840,000	—	—	—	—
Sale of Fixed Assets	—	—	3,644,000	—	684,000
Use of Fund Balance	—	789,444	1,126,686	42.7	4,110,609
<b>Total</b>	<b>\$ 94,189,165</b>	<b>\$ 58,494,606</b>	<b>\$ 81,707,783</b>	<b>39.7</b>	<b>\$ 12,416,433</b>

## Summary of Capital Program Funds

### Capital Outlay Fund

Budget by Categories of Expenditures					
	Fiscal Year 2012–13 Adopted Budget	Fiscal Year 2013–14 Adopted Budget	Fiscal Year 2014–15 Recommended Budget	% Change	Fiscal Year 2015–16 Recommended Budget
Capital Assets/Land Acquisition	\$ 46,702,282	\$ 20,449,372	\$ 2,100,000	(89.7)	\$ —
<b>Total</b>	<b>\$ 46,702,282</b>	<b>\$ 20,449,372</b>	<b>\$ 2,100,000</b>	<b>(89.7)</b>	<b>\$ —</b>
Budget by Categories of Revenue					
	Fiscal Year 2012–13 Adopted Budget	Fiscal Year 2013–14 Adopted Budget	Fiscal Year 2014–15 Recommended Budget	% Change	Fiscal Year 2015–16 Recommended Budget
Revenue From Use of Money & Property	\$ 1,500,000	\$ —	\$ —	—	\$ —
Intergovernmental Revenue	7,362,282	424,372	—	(100.0)	—
Miscellaneous Revenue	—	4,400,000	—	(100.0)	—
Other Financing Sources	37,840,000	15,625,000	2,100,000	(86.6)	—
<b>Total</b>	<b>\$ 46,702,282</b>	<b>\$ 20,449,372</b>	<b>\$ 2,100,000</b>	<b>(89.7)</b>	<b>\$ —</b>

### Justice Facility Construction Fund

Budget by Categories of Expenditures					
	Fiscal Year 2012–13 Adopted Budget	Fiscal Year 2013–14 Adopted Budget	Fiscal Year 2014–15 Recommended Budget	% Change	Fiscal Year 2015–16 Recommended Budget
Capital Assets/Land Acquisition	\$ 27,600,000	\$ —	\$ 49,940,000	—	\$ —
<b>Total</b>	<b>\$ 27,600,000</b>	<b>\$ —</b>	<b>\$ 49,940,000</b>	<b>—</b>	<b>\$ —</b>
Budget by Categories of Revenue					
	Fiscal Year 2012–13 Adopted Budget	Fiscal Year 2013–14 Adopted Budget	Fiscal Year 2014–15 Recommended Budget	% Change	Fiscal Year 2015–16 Recommended Budget
Other Financing Sources	\$ 27,600,000	\$ —	\$ 49,940,000	—	\$ —
<b>Total</b>	<b>\$ 27,600,000</b>	<b>\$ —</b>	<b>\$ 49,940,000</b>	<b>—</b>	<b>\$ —</b>

### Library Projects Fund

Budget by Categories of Expenditures					
	Fiscal Year 2012–13 Adopted Budget	Fiscal Year 2013–14 Adopted Budget	Fiscal Year 2014–15 Recommended Budget	% Change	Fiscal Year 2015–16 Recommended Budget
Capital Assets/Land Acquisition	\$ —	\$ 18,231,301	\$ 9,750,000	(46.8)	\$ —
<b>Total</b>	<b>\$ —</b>	<b>\$ 18,231,301</b>	<b>\$ 9,750,000</b>	<b>(46.8)</b>	<b>\$ —</b>
Budget by Categories of Revenue					
	Fiscal Year 2012–13 Adopted Budget	Fiscal Year 2013–14 Adopted Budget	Fiscal Year 2014–15 Recommended Budget	% Change	Fiscal Year 2015–16 Recommended Budget
Other Financing Sources	\$ —	\$ 18,231,301	\$ 9,750,000	(46.8)	\$ —
<b>Total</b>	<b>\$ —</b>	<b>\$ 18,231,301</b>	<b>\$ 9,750,000</b>	<b>(46.8)</b>	<b>\$ —</b>

## Summary of Capital Program Funds

### Multiple Species Conservation Program Fund

Budget by Categories of Expenditures					
	Fiscal Year 2012–13 Adopted Budget	Fiscal Year 2013–14 Adopted Budget	Fiscal Year 2014–15 Recommended Budget	% Change	Fiscal Year 2015–16 Recommended Budget
Capital Assets/Land Acquisition	\$ 10,000,000	\$ 10,000,000	\$ 10,000,000	0.0	\$ 2,500,000
<b>Total</b>	<b>\$ 10,000,000</b>	<b>\$ 10,000,000</b>	<b>\$ 10,000,000</b>	<b>0.0</b>	<b>\$ 2,500,000</b>
Budget by Categories of Revenue					
	Fiscal Year 2012–13 Adopted Budget	Fiscal Year 2013–14 Adopted Budget	Fiscal Year 2014–15 Recommended Budget	% Change	Fiscal Year 2015–16 Recommended Budget
Other Financing Sources	\$ 10,000,000	\$ 10,000,000	\$ 10,000,000	0.0	\$ 2,500,000
<b>Total</b>	<b>\$ 10,000,000</b>	<b>\$ 10,000,000</b>	<b>\$ 10,000,000</b>	<b>0.0</b>	<b>\$ 2,500,000</b>

### Edgemoor Development Fund

Budget by Categories of Expenditures					
	Fiscal Year 2012–13 Adopted Budget	Fiscal Year 2013–14 Adopted Budget	Fiscal Year 2014–15 Recommended Budget	% Change	Fiscal Year 2015–16 Recommended Budget
Services & Supplies	\$ 608,000	\$ 533,000	\$ 633,000	18.8	\$ 633,000
Operating Transfers Out	9,278,883	9,280,933	9,284,783	0.0	9,283,433
<b>Total</b>	<b>\$ 9,886,883</b>	<b>\$ 9,813,933</b>	<b>\$ 9,917,783</b>	<b>1.1</b>	<b>\$ 9,916,433</b>
Budget by Categories of Revenue					
	Fiscal Year 2012–13 Adopted Budget	Fiscal Year 2013–14 Adopted Budget	Fiscal Year 2014–15 Recommended Budget	% Change	Fiscal Year 2015–16 Recommended Budget
Revenue From Use of Money & Property	\$ 5,623,197	\$ 4,518,352	\$ 639,089	(85.9)	\$ 614,472
Intergovernmental Revenues	4,263,686	4,506,137	4,508,008	0.0	4,507,352
Other Financing Sources	—	—	3,644,000	—	684,000
Use of Fund Balance	—	789,444	1,126,686	42.7	4,110,609
<b>Total</b>	<b>\$ 9,886,883</b>	<b>\$ 9,813,933</b>	<b>\$ 9,917,783</b>	<b>1.1</b>	<b>\$ 9,916,433</b>

# Outstanding Capital Projects by Fund

## Capital Outlay Fund

Public Safety Group (PSG)								
Project Name	Project Number	Fiscal Year Project Established	Total Appropriations through 2/28/2014	Fiscal Year 2013-14 Adopted Budget	Fiscal Year 2014-15 Recommended Budget	% Change	Fiscal Year 2015-16 Recommended Budget	Total Expenditures through 2/28/2014
Boulevard Fire Land Acquisition*	1016224	2011-12	\$ 277,450	—	—	—	—	\$ 232,748
<i>Project Scope:</i> The San Diego County Fire Authority (SDCFA) Boulevard Fire Station Land Acquisition will acquire property necessary to build the new state-of-the-art fire station.								
<i>Funding Source(s):</i> General Fund								
Boulevard Fire Station	1016991	2011-12	\$ 3,500,000	—	—	—	—	\$ 361,302
<i>Project Scope:</i> The San Diego County Fire Authority (SDCFA) Boulevard Fire Station will replace the existing facility. The new building will be approximately 8,500 square feet and meet the current and projected needs for station sleeping and kitchen facilities and housing of fire apparatus for the community of Boulevard. Construction of the Fire Station is anticipated to be completed in 2014.								
<i>Funding Source(s):</i> Miscellaneous Revenue								
East Mesa Reentry Facility Complex Switch Gear Replacement	1017775	2012-13	\$ 1,582,343	—	—	—	—	\$ 79,337
<i>Project Scope:</i> Replace the over 20-year-old deteriorated main switch gear serving the East Mesa Reentry Facility complex.								
<i>Funding Source(s):</i> General Fund								
Regional Communication System Radio Tower	1018664	2013-14	\$ 250,000	—	—	—	—	\$ 193,904
<i>Project Scope:</i> Design, procure and install next generation regional public safety communications system.								
<i>Funding Source(s):</i> General Fund								
<b>Total PSG Capital Outlay Fund</b>	<b>4</b>	<b>—</b>	<b>\$ 5,609,793</b>	<b>—</b>	<b>—</b>	<b>—</b>	<b>—</b>	<b>\$ 867,291</b>
Health and Human Services Agency (HHSa)								
Project Name	Project Number	Fiscal Year Project Established	Total Appropriations through 2/28/2014	Fiscal Year 2013-14 Adopted Budget	Fiscal Year 2014-15 Recommended Budget	% Change	Fiscal Year 2015-16 Recommended Budget	Total Expenditures through 2/28/2014
San Pasqual Administration Building	1014131	2009-10	\$ 900,600	—	—	—	—	—
<i>Project Scope:</i> The replacement of administrative facilities destroyed in the 2007 wildfires. The reconstruction of a new 7,000 square foot administration building that will provide office space for County and contracted staff. The administration building will feature a shared waiting area, restrooms and meeting accommodations in a central zone.								
<i>Funding Source(s):</i> General Fund								
San Pasqual Academy Sports Field	1014255	2009-10	\$ 8,700	—	—	—	—	—
<i>Project Scope:</i> The reconstruction project of the San Pasqual Academy campus will include the installation of a new sports field.								
<i>Funding Source(s):</i> General Fund								
San Pasqual Academy Water Well*	1014666	2008-09	\$ 450,000	—	—	—	—	\$ 341,338
<i>Project Scope:</i> As part of the reconstruction project of the San Pasqual Academy campus, it will be necessary to upgrade roads, sewer, water and fire protection infrastructure.								
<i>Funding Source(s):</i> General Fund								
<b>Total HHSa Capital Outlay Fund</b>	<b>3</b>	<b>—</b>	<b>\$ 1,359,300</b>	<b>—</b>	<b>—</b>	<b>—</b>	<b>—</b>	<b>\$ 341,338</b>

\*Project Scheduled to close June 30, 2014 and will no longer be displayed in Operational Plan.

## ■ ■ ■ Outstanding Capital Projects by Fund

### Capital Outlay Fund

Land Use and Environment Group (LUEG) (continued)								
Project Name	Project Number	Fiscal Year Project Established	Total Appropriations through 2/28/2014	Fiscal Year 2013-14 Adopted Budget	Fiscal Year 2014-15 Recommended Budget	% Change	Fiscal Year 2015-16 Recommended Budget	Total Expenditures through 2/28/2014
4S Ranch Shade Structure Boys and Girls Club	1018350	2013-14	\$ 150,000	\$ 150,000	—	(100.0)	—	\$ 3,732
<i>Project Scope:</i>		The 4S Ranch Shade Structure—Boys and Girls Club project includes the construction of a shade structure over an existing play area within the 4S Ranch Sports Park. The playground is adjacent to the Boys and Girls Club located on the east side of the park.						
<i>Funding Source(s):</i>		General Fund						
4S Ranch Shade Structure Sports Park	1018351	2013-14	\$ 110,000	\$ 110,000	—	(100.0)	—	\$ 1,829
<i>Project Scope:</i>		The 4S Ranch Shade Structure – Sports Park project includes the construction of a shade structure over an existing playground within the 4S Ranch Sports Park, adjacent to the north ball fields.						
<i>Funding Source(s):</i>		General Fund						
4S Ranch Sports Park Artificial Turf	1016576	2011-12	\$ 1,570,000	—	—	—	—	\$ 1,547,448
<i>Project Scope:</i>		The 4S Ranch Sports Park Artificial Turf project includes the conversion of multi-purpose grass fields into artificial turf.						
<i>Funding Source(s):</i>		General Fund						
4S Ranch Synthetic Turf South Ball Fields	1018279	2013-14	\$ 2,500,000	\$ 2,500,000	—	(100.0)	—	\$ 105,139
<i>Project Scope:</i>		The 4S Ranch Synthetic Turf South Ball Fields project includes the conversion of 239,000 square feet of multi-purpose grass fields into synthetic turf. This project consists of converting the south ballfields into water conserving synthetic turf. The multi-purpose fields are located at the north part of the 4S Ranch Sports park.						
<i>Funding Source(s):</i>		General Fund, Other - Special District						
Agua Caliente Park Cabins*	1015515	2011-12	\$ 525,917	—	—	—	—	\$ 518,739
<i>Project Scope:</i>		Agua Caliente County Park is located in the Anza-Borrego Desert, an unincorporated area of the County. This project consists of purchasing and installing environmentally conscious-designed cabins that are ideal for the desert setting.						
<i>Funding Source(s):</i>		General Fund						
Agua Caliente Park Water and Sewer Electrical Line Replacement	1014351	2010-11	\$ 3,275,000	—	—	—	—	\$ 3,205,962
<i>Project Scope:</i>		This project consists of renovating the current septic disposal system and upgrading the electrical system to better serve visitors to the park.						
<i>Funding Source(s):</i>		General Fund						
Clemens Lane Shade Structure	1018358	2012-13	\$ 75,000	—	—	—	—	—
<i>Project Scope:</i>		This project includes design and construction of shade structures over the existing tot lot and junior playground.						
<i>Funding Source(s):</i>		General Fund						
County Preserve Fire Recovery	1015170	2008-09	\$ 311,327	—	—	—	—	—
<i>Project Scope:</i>		This project consists of fencing, signage, design and construction of new culverts for erosion control at Lusardi Creek.						
<i>Funding Source(s):</i>		General Fund, Miscellaneous Revenue						
Don Dussault Park Improvements	1015519	2011-12	\$ 330,000	\$ 206,372	—	(100.0)	—	\$ 70,861
<i>Project Scope:</i>		Don Dussault County Park is located in the community of Fallbrook. Improvements include Americans with Disabilities Act (ADA) parking, junior and tot lot play structures, picnic areas, exercise equipment and paths, landscaping and irrigation.						
<i>Funding Source(s):</i>		Community Development Block Grants						
Energy Upgrades to Park Facilities Sweetwater Regional	1014124	2010-11	\$ 1,500,000	—	—	—	—	\$ 1,475,444
<i>Project Scope:</i>		Retrofit interior and exterior lighting with energy efficient fixtures (typically LED and Induction) at various locations; install/retrofit facilities with energy saving fixtures and equipment.						
<i>Funding Source(s):</i>		General Fund						

\*Project Scheduled to close June 30, 2014 and will no longer be displayed in Operational Plan.



## Capital Outlay Fund

### Land Use and Environment Group (LUEG) (continued)

Project Name	Project Number	Fiscal Year Project Established	Total Appropriations through 2/28/2014	Fiscal Year 2013-14 Adopted Budget	Fiscal Year 2014-15 Recommended Budget	% Change	Fiscal Year 2015-16 Recommended Budget	Total Expenditures through 2/28/2014
Escondido Creek Acquisitions	1000249	1999-00	\$ 6,241,685	—	—	—	—	\$ 6,107,322
<i>Project Scope:</i>	This project is for the purchase of land acquisition in Escondido Creek area.							
<i>Funding Source(s):</i>	General Fund							
Felicita Park Improvements	1004981	2002-03	\$ 2,387,613	—	—	—	—	\$ 1,309,289
<i>Project Scope:</i>	Felicita Park is a 53-acre park located in Escondido. Addition of a restroom with a bridal changing room; new shade pavilion and paving for the reception area; conversion of existing parking spaces to provide additional Americans with Disabilities Act (ADA) compliant parking; as well as new walkways, ramps, landscaping, irrigation; and electric and water service connections.							
<i>Funding Source(s):</i>	General Fund, Federal Other Federal Grants							
Felicita Park Turf and Playground Improvements	1017898	2012-13	\$ 738,507	—	—	—	—	—
<i>Project Scope:</i>	Felicita Park is a 53-acre park located in Escondido. This project will focus on playground upgrades, including ADA-compliant access, new playing surfaces, a drinking fountain, landscaping, and signage. The planned improvements also include creek restoration, picnic facility upgrades, entry booth improvements, electrical upgrades, and museum facility improvement.							
<i>Funding Source(s):</i>	Parkland Dedication Fund							
Flume Trail Construction	1017535	2012-13	\$ 466,500	—	—	—	—	\$ 238,559
<i>Project Scope:</i>	The project includes the construction of 2.5 miles of the 36-mile "Historic Flume Corridor" adjacent to El Monte Park. Linkage to adjacent flume corridor segments can be made through future acquisition to the West allowing trail linkage to Lake Jennings Park. Future acquisitions of parcels to the East of this segment will allow linkage to the Cleveland National Forest.							
<i>Funding Source(s):</i>	General Fund, State Aid Other State							
Guajome Regional Park Electrical, Water and Sewer	1018874	2014-15	—	—	\$ 1,500,000	—	—	—
<i>Project Scope:</i>	Guajome County Park is located in the coastal City of Oceanside. The parks electrical, water and sewer systems were constructed in the 1970's. Funding of \$1.5 million from General Fund fund balance will be used to upgrade the park electrical distribution system, electrical panels, mini-switches and 50 amp electrical service to accommodate present-day RVs. Additionally, the project includes new sewer lines, RV connections, conveyance systems, potable water lines, drinking fountains and stabilization of utility pedestals. The project is estimated to be completed by summer 2015.							
<i>Funding Source(s):</i>	General Fund							
Guajome Regional Park Playground Improvements	1018183	2012-13	\$ 750,000	—	—	—	—	\$ 2,267
<i>Project Scope:</i>	Poured in place playground surface, shade canopies, horseshoe pits, volleyball court, exercise stations and gazebo.							
<i>Funding Source(s):</i>	Parkland Dedication Fund							
Guajome Regional Park Volunteer Vehicle Pad*	1015180	2010-11	\$ 60,000	—	—	—	—	\$ 59,133
<i>Project Scope:</i>	This project consists of electrical and sewer upgrades to two existing volunteer pads and an increase in utility capacity for an additional third volunteer pad.							
<i>Funding Source(s):</i>	General Fund							
Heritage Park Improvements	1015185	2008-09	\$ 137,500	—	—	—	—	\$ 119,291
<i>Project Scope:</i>	External Improvements to historical structures.							
<i>Funding Source(s):</i>	General Fund							
Hollister Pond Improvements	1017286	2011-12	\$ 75,000	—	—	—	—	\$ 16,839
<i>Project Scope:</i>	Installation of a viewing deck with interpretive signage, benches and native landscaping adjacent to Hollister Pond in the Otay Valley Regional Park.							
<i>Funding Source(s):</i>	State Proposition 40							

\*Project Scheduled to close June 30, 2014 and will no longer be displayed in Operational Plan.

## ■ ■ ■ Outstanding Capital Projects by Fund

### Capital Outlay Fund

Land Use and Environment Group (LUEG) (continued)								
Project Name	Project Number	Fiscal Year Project Established	Total Appropriations through 2/28/2014	Fiscal Year 2013-14 Adopted Budget	Fiscal Year 2014-15 Recommended Budget	% Change	Fiscal Year 2015-16 Recommended Budget	Total Expenditures through 2/28/2014
I 122 Loss Allotment Supervisorial District 2 Acquisitions	1014133	2007-08	\$ 240,600	—	—	—	—	—
<i>Project Scope:</i> This project is for the acquisition of open space in the District 2 area.								
<i>Funding Source(s):</i> Miscellaneous Revenue								
Jess Martin Park Improvement	1015172	2008-09	\$ 645,940	—	—	—	—	\$ 613,493
<i>Project Scope:</i> Jess Martin Park is a nine-acre multi-use recreational area located in the community of Julian. This project will design and construct an exercise path, a shade pavilion and related improvements to the Jess Martin Park.								
<i>Funding Source(s):</i> General Fund, Community Development Block Grants								
Jess Martin Multi-Use Ball Fields Irrigation and Seepage Pit	1018329	2013-14	\$ 218,000	\$ 218,000	—	(100.0)	—	\$ 64,003
<i>Project Scope:</i> Jess Martin Park is a nine-acre multi-use recreational area located in the community of Julian. This project will provide a new irrigation mainline and a seepage pit system for the ball fields.								
<i>Funding Source(s):</i> Community Development Block Grants								
Lakeside Equestrian Acquisition	1017325	2012-13	\$ 403,590	—	—	—	—	\$ 403,590
<i>Project Scope:</i> Design and construction of a 13.88 acres equestrian facility on vacant land at the Northeast corner of Willow Rd and Moreno Ave.								
<i>Funding Source(s):</i> General Fund								
Lake Morena Electrical Update	1018190	2013-14	\$ 2,000,000	\$ 2,000,000	—	(100.0)	—	\$ 19,066
<i>Project Scope:</i> Lake Morena County Park is located in eastern San Diego County, southwest of the Laguna Mountains, and showcases desert, coastal and mountain habitats. The park features camping facilities including spaces for tents, recreational vehicles, cabins by the lake, and a youth area. The majority of the camping facilities provide electrical hookups. This project will remove old electrical system infrastructure, currently providing 15 and 30 amp service, and install an upgraded system that provides 50 amp service.								
<i>Funding Source(s):</i> General Fund								
Lakeside Skate Park Construction	1017857	2012-13	\$ 624,308	—	—	—	—	\$ 371,830
<i>Project Scope:</i> Construction of a 16,500 square-foot ADA accessible skateboard friendly park that includes a bowl, banks and stairs that blends into the surrounding environment.								
<i>Funding Source(s):</i> General Fund, Parkland Dedication Fund								
Lakeside Soccer Fields Acquisition	1009548	2005-06	\$ 337,391	—	—	—	—	\$ 14,611
<i>Project Scope:</i> Acquisition, design, and construction of a 13.5-acre site as an active recreation soccer park.								
<i>Funding Source(s):</i> General Fund								
Lincoln Acres Park Shade Structures Improvement*	1014733	2010-11	\$ 128,685	—	—	—	—	\$ 128,570
<i>Project Scope:</i> The project includes the installation of three shade structures over existing playground areas.								
<i>Funding Source(s):</i> Community Development Block Grants								
Lincoln Acres Park Pavilion and Playground*	1015517	2010-11	\$ 110,000	—	—	—	—	\$ 99,538
<i>Project Scope:</i> Lincoln Acres County Park is a 0.47-acre neighborhood day use park in the unincorporated area of the County. The project involves the design and construction of a 16-foot diameter pavilion, a children's playground for ages two to five years old. This includes the hardscape and landscape of a 1,032-square foot space and improvements including installation of landscaping and irrigation, concrete walks, construction of the pavilion, installation of playground equipment and protective playground surfacing.								
<i>Funding Source(s):</i> General Fund								

\*Project Scheduled to close June 30, 2014 and will no longer be displayed in Operational Plan.

## Capital Outlay Fund

Land Use and Environment Group (LUEG) (continued)								
Project Name	Project Number	Fiscal Year Project Established	Total Appropriations through 2/28/2014	Fiscal Year 2013-14 Adopted Budget	Fiscal Year 2014-15 Recommended Budget	% Change	Fiscal Year 2015-16 Recommended Budget	Total Expenditures through 2/28/2014
Live Oak Amphitheater	1014129	2009-10	\$ 492,000	—	—	—	—	\$ 340,150
<i>Project Scope:</i> Design and construction of 88-seat amphitheater located in Live Oak Park.								
<i>Funding Source(s):</i> General Fund, State Aid Other State, Parkland Dedication Fund								
Mountain Empire (Campo) Community Center Playground Phase II*	1016992	2012-13	\$ 247,397	—	—	—	—	\$ 245,146
<i>Project Scope:</i> This project includes various park improvements at the Mountain Empire Community Center and will install a picnic pavilion and picnic tables, ADA accessible walkways, exercise stations, and other improvements including park benches, barbecues, landscaping and irrigation, and trash receptacles.								
<i>Funding Source(s):</i> Community Development Block Grants								
Mt Olympus Preserve Improvements	1015194	2007-08	\$ 350,000	—	—	—	—	\$ 51,530
<i>Project Scope:</i> This project consist of park improvements that include staging area, signage, benches, kiosk, fencing and trail heads.								
<i>Funding Source(s):</i> General Fund								
Oak Country II Trail*	1014256	2009-10	\$ 533,298	—	—	—	—	\$ 529,380
<i>Project Scope:</i> This project consist of a new trail system and staging area.								
<i>Funding Source(s):</i> General Fund, State Proposition 12								
Otay Valley Regional Park Phase II Acquisition	1000246	1999-00	\$ 9,590,877	—	—	—	—	\$ 9,432,140
<i>Project Scope:</i> As part of the Otay Valley Regional Park Master Plan, certain parcels in the valley were identified as possible active recreation sites								
<i>Funding Source(s):</i> General Fund, Miscellaneous Revenue								
Otay Valley Regional Park Staging Area	1010431	2006-07	\$ 218,214	—	—	—	—	—
<i>Project Scope:</i> Design and construction of multi-use trails to include connections to adjacent trail systems, in addition to development/construction of staging areas and environmental mitigation areas.								
<i>Funding Source(s):</i> General Fund								
Otay Valley Regional Park Trail Improvements	1009268	2005-06	\$ 9,220,877	—	—	—	—	\$ 8,635,170
<i>Project Scope:</i> Design and construction of multi-use trails to include connections to adjacent trail systems, in addition to development/construction of staging areas and environmental mitigation areas.								
<i>Funding Source(s):</i> General Fund, State Proposition 12, State Proposition 40								
Otay Valley River Park Palm Avenue Multi-Use Trail Segment*	1016742	2011-12	\$ 96,594	—	—	—	—	\$ 87,287
<i>Project Scope:</i> Design and construction of multi-use trails to include connections to adjacent trail systems, in addition to development/construction of staging areas and environmental mitigation areas.								
<i>Funding Source(s):</i> General Fund								
Pine Valley Ball Field Improvements	1006608	2004-05	\$ 1,992,000	—	—	—	—	\$ 106,996
<i>Project Scope:</i> Construction of new multi-purpose artificial turf softball and soccer field, an additional paved parking lot, ADA access and other related park improvements.								
<i>Funding Source(s):</i> General Fund								
Potrero Park Fitness and Nature Trail Improvement	1018129	2012-13	\$ 179,848	—	—	—	—	\$ 144,651
<i>Project Scope:</i> This project includes the addition of a new American with Disabilities Act (ADA) accessible trail with outdoor fitness stations linking 0.25 miles of trail to the existing 0.4 mile nature trail that will undergo surface improvements and interpretive signage.								
<i>Funding Source(s):</i> General Fund								

\*Project Scheduled to close June 30, 2014 and will no longer be displayed in Operational Plan.

## ■ ■ ■ Outstanding Capital Projects by Fund

### Capital Outlay Fund

Land Use and Environment Group (LUEG) (continued)								
Project Name	Project Number	Fiscal Year Project Established	Total Appropriations through 2/28/2014	Fiscal Year 2013-14 Adopted Budget	Fiscal Year 2014-15 Recommended Budget	% Change	Fiscal Year 2015-16 Recommended Budget	Total Expenditures through 2/28/2014
Rainbow Park Improvements*	1014734	2010-11	\$ 175,000	—	—	—	—	\$ 175,000
<i>Project Scope:</i> Rainbow County Park is a 4.5-acre park located in the community of Rainbow in North San Diego County. This project includes improvements to the playground, including rubber safety surfacing, and additional shade trees for the picnic areas.								
<i>Funding Source(s):</i> Community Development Block Grants								
Ramona Grasslands Phase I	1018665	2013-14	\$ 385,000	—	—	—	—	—
<i>Project Scope:</i> This project includes 5.5 mile multi-use trail system that will include maintenance building, visitor kiosk and two volunteer pads.								
<i>Funding Source(s):</i> General Fund								
Rancho Guajome Adobe Volunteer Vehicle Pad	1015196	2010-11	\$ 60,000	—	—	—	—	—
<i>Project Scope:</i> Rehabilitation of volunteer pad.								
<i>Funding Source(s):</i> General Fund								
Ranger Housing Improvements	1015191	2007-08	\$ 2,500,000	—	—	—	—	\$ 2,482,199
<i>Project Scope:</i> Project will provide the construction of various improvements to several County-owned ranger residences to reduce energy consumption, decrease annual maintenance costs, and modernize the residences.								
<i>Funding Source(s):</i> General Fund								
San Diego Botanic Garden Expansion	1018209	2013-14	\$ 1,000,000	\$ 1,000,000	—	(100.0)	—	—
<i>Project Scope:</i> The San Diego Botanic Garden is a 37-acre area located in Encinitas. This project is for planning and development of the future expansion of the Garden, which will ultimately house a new visitor center, new parking facilities, and additional gardens.								
<i>Funding Source(s):</i> General Fund								
San Dieguito Park Improvements*	1014146	2010-11	\$ 660,000	—	—	—	—	\$ 631,197
<i>Project Scope:</i> Project will include the design and construction of a fully integrated ADA accessible playground.								
<i>Funding Source(s):</i> Parkland Dedication Fund, Other - Special Districts								
San Dieguito Park Shade Structures*	1015197	2010-11	\$ 147,000	—	—	—	—	\$ 135,580
<i>Project Scope:</i> The project includes design and construction of shade structures for picnic areas.								
<i>Funding Source(s):</i> General Fund								
San Elijo Gateway Property Acquisition	1018208	2013-14	\$ 1,800,000	\$ 1,800,000	—	(100.0)	—	\$ 22,450
<i>Project Scope:</i> The San Elijo Lagoon Ecological Reserve is one of the few remaining coastal wetlands in San Diego County, and is home to numerous species of plants and animals. The acquisition project is to permanently acquire a portion of 3.4 acres of open space within the City of Solana Beach adjacent to the Lagoon, just east of the Cardiff State Beach, and incorporate it into the Reserve.								
<i>Funding Source(s):</i> General Fund								
San Elijo Lagoon Nature Center Expansion	1000285	2003-04	\$ 5,652,396	—	—	—	—	\$ 5,513,371
<i>Project Scope:</i> The San Elijo Lagoon Ecological Reserve is one of the few remaining coastal wetlands in San Diego County, and is home to numerous species of plants and animals. This project is for the replacement of the existing facility with a larger, two-story structure with modern exhibits and displays, showcasing the unique ecology and history of the lagoon environment, including upgrades to the existing parking lot and entrance.								
<i>Funding Source(s):</i> General Fund								

\*Project Scheduled to close June 30, 2014 and will no longer be displayed in Operational Plan.

## Capital Outlay Fund

Land Use and Environment Group (LUEG) (continued)								
Project Name	Project Number	Fiscal Year Project Established	Total Appropriations through 2/28/2014	Fiscal Year 2013-14 Adopted Budget	Fiscal Year 2014-15 Recommended Budget	% Change	Fiscal Year 2015-16 Recommended Budget	Total Expenditures through 2/28/2014
San Luis Rey River Park Acquisition	1007108	2005-06	\$ 9,076,070	\$ 3,065,000	—	(100.0)	—	\$ 5,943,026
<i>Project Scope:</i>	The Master Plan for the proposed San Luis Rey River Park includes an 8.5-mile length of the San Luis Rey River corridor in North San Diego County. The River Park will provide opportunities for recreation, preservation, and restoration. The three major components of the River Park are anticipated to be: an open space preserve, active recreational amenities, and a network of multi-use trails that connect the park together internally and with surrounding communities. The heart of the park will be an approximately 1,600-acre open space preserve, providing a habitat for several threatened and endangered species. The funding for this project will provide for the acquisition of additional properties in order to develop the River Park.							
<i>Funding Source(s):</i>	General Fund							
San Luis Rey River Park Planning and Development	1000036	2002-03	\$ 4,206,179	—	—	—	—	\$ 1,500,610
<i>Project Scope:</i>	The Master Plan for the proposed San Luis Rey River Park includes an 8.5-mile length of the San Luis Rey River corridor in North San Diego County. Acquisition of properties within the proposed San Luis Rey River Park. Additional 250 acres needed which includes 2 active recreation sites (40-60 acres).							
<i>Funding Source(s):</i>	General Fund							
Santa Ysabel Nature Center	1014142	2009-10	\$ 125,000	—	—	—	—	\$ 90,339
<i>Project Scope:</i>	Design and construct a nature center facility including parking and related facility amenities							
<i>Funding Source(s):</i>	General Fund							
Spring Valley Park LED Lights and Landscaping*	1016993	2012-13	\$ 118,642	—	—	—	—	\$ 118,642
<i>Project Scope:</i>	Spring Valley County Park provides the community of Spring Valley with a public open space and recreational facilities. This project is for installation of LED lights and landscaping, which will increase the energy efficiency at the park.							
<i>Funding Source(s):</i>	Community Development Block Grants							
Stowe Trail Acquisition	1006952	2004-05	\$ 565,000	—	—	—	—	\$ 70,198
<i>Project Scope:</i>	Department of Parks and Recreation acquiring parcels and easements adjacent to MCAS Miramar in effort to create an alternative, parallel trail alignment.							
<i>Funding Source(s):</i>	General Fund							
Sweetwater Lane Artificial Turf Improvements	1014253	2009-10	\$ 3,730,000	—	—	—	—	\$ 3,023,328
<i>Project Scope:</i>	Sweetwater Lane County Park is an 11-acre park in the community of Spring Valley that provides a variety of recreational facilities to the public. Among other facilities, the Park features four softball/baseball fields, seven soccer fields, a concession building and light towers for night games. This project is to retrofit and replace worn grass fields at the existing parks with artificial turf which will conserve water and allow increased use of the playing fields.							
<i>Funding Source(s):</i>	General Fund, Other - Special District							
Sweetwater Lane Park Exercise Path*	1015516	2011-12	\$ 250,000	—	—	—	—	\$ 248,305
<i>Project Scope:</i>	Sweetwater Lane County Park is an 11-acre park in the community of Spring Valley that provides a variety of recreational facilities to the public. The project will augment the existing exercise path and provide for 30 stations established in six different areas of the park along the path. The stations will include shaded benches that offer rest along the path.							
<i>Funding Source(s):</i>	Community Development Block Grants							
Sweetwater Loop Trail Segment 4 Reroute	1018723	2013-14	\$ 361,000	—	—	—	—	—
<i>Project Scope:</i>	Construction for the northern segment of Sweetwater Regional Multi-Purpose Loop Trail and Bonita Golf Course Trail.							
<i>Funding Source(s):</i>	Miscellaneous Revenue							

\*Project Scheduled to close June 30, 2014 and will no longer be displayed in Operational Plan.

## ■ ■ ■ Outstanding Capital Projects by Fund

### Capital Outlay Fund

Land Use and Environment Group (LUEG) (continued)								
Project Name	Project Number	Fiscal Year Project Established	Total Appropriations through 2/28/2014	Fiscal Year 2013-14 Adopted Budget	Fiscal Year 2014-15 Recommended Budget	% Change	Fiscal Year 2015-16 Recommended Budget	Total Expenditures through 2/28/2014
Sweetwater Park State Route 125 Mitigation*	1000138	2002-03	\$ 410,000	—	—	—	—	\$ 357,424
<i>Project Scope:</i> The project consist of design, construction and project oversight of trail improvements.								
<i>Funding Source(s):</i> State Construction - Other								
Sweetwater Parking Lot Improvement	1016213	2011-12	\$ 300,000	—	—	—	—	\$ 75,513
<i>Project Scope:</i> This project consist of construction of approximately 35 space parking lots.								
<i>Funding Source(s):</i> General Fund								
Sweetwater Regional Park Equestrian Center Phase 3	1014849	2010-11	\$ 535,426	—	—	—	—	\$ 41,381
<i>Project Scope:</i> Construction of 1.43 mile trail located in the Sweetwater Valley Regional Park.								
<i>Funding Source(s):</i> General Fund, State Aid Other State, Federal Department of Interior 15.916								
Sweetwater Regional Park Photovoltaic Phase II	1018875	2014-15	—	—	\$ 600,000	—	—	—
<i>Project Scope:</i> Sweetwater Regional Park is located in the unincorporated community of Bonita. The 540-acre park provides extensive facilities for outdoor recreation, a community building and camping. Funding of \$600K from General Fund fund balance will be used to complete Sweetwater Regional Photovoltaic Phase II. The project will install 98 additional solar panels that will connect to the existing 250 kilowatt photovoltaic system. The system will provide a clean source of renewable energy. Completion of Phase II will result in overall energy consumption savings of up to 98% in this park. The project is estimated to be completed in 2016.								
<i>Funding Source(s):</i> General Fund								
Sweetwater Summit Campground and Local Park Improvements*	1000207	2002-03	\$ 13,520,988	—	—	—	—	\$ 13,520,570
<i>Project Scope:</i> Phase II includes 27 campsites & amenities.								
<i>Funding Source(s):</i> General Fund, State Proposition 12, State Proposition 40								
Swiss Park Trail Connection and Improvements	1014352	2010-11	\$ 400,000	—	—	—	—	\$ 369,344
<i>Project Scope:</i> This project includes the design and construction of a multi-use trail and staging area located at Swiss Club in San Diego for access to the Bayshore Bikeway. Additional amenities include ten new parking stalls with one van accessible handicap parking space, four bike racks and an ADA compliant port-a-potty. The Swiss Park improvements include repaving and restriping 58 parking spaces with four ADA parking spaces with two van accessible spaces, and asphalt paving. New fencing and gate improvements will provide separation between the staging area and banquet facilities.								
<i>Funding Source(s):</i> General Fund								
Tijuana River Valley Equestrian Center	1014147	2010-11	\$ 117,000	—	—	—	—	\$ 100,359
<i>Project Scope:</i> The Tijuana River Valley (TJRV) Regional Park offers more than 1,700 acres of diverse habitats from dense riparian forests to coastal maritime sage scrub. The Park features multi-use trails, a community garden, and one of the County's newest sports facilities, which includes five ball fields and a multi-use open turf area. This project is for the design and construction of an Equestrian Staging Area, which is connected to the Pacific Ocean via multi-use trails.								
<i>Funding Source(s):</i> General Fund								
Tijuana River Valley Sports Complex Concept Plan	1010973	2006-07	\$ 466,603	—	—	—	—	\$ 195,365
<i>Project Scope:</i> This project is for the design and construct a series of multi-use ball fields, playgrounds, restrooms and other park amenities.								
<i>Funding Source(s):</i> General Fund								

\*Project Scheduled to close June 30, 2014 and will no longer be displayed in Operational Plan.

## Capital Outlay Fund

Land Use and Environment Group (LUEG) (continued)								
Project Name	Project Number	Fiscal Year Project Established	Total Appropriations through 2/28/2014	Fiscal Year 2013-14 Adopted Budget	Fiscal Year 2014-15 Recommended Budget	% Change	Fiscal Year 2015-16 Recommended Budget	Total Expenditures through 2/28/2014
Tijuana River Valley Trail Construction	1014134	2007-08	\$ 323,999	—	—	—	—	\$ 220,834
<i>Project Scope:</i>		This project is for the design and construction of a three mile trail at Dairy Mart Pond.						
<i>Funding Source(s):</i>		General Fund						
Tijuana River Valley Regional Trails Construction	1018196	2013-14	\$ 2,002,428	\$ 1,900,000	—	(100.0)	—	\$ 346,845
<i>Project Scope:</i>		This project is for the design and construction of 22.5 mile trail system and other related improvements within the Park.						
<i>Funding Source(s):</i>		Miscellaneous Revenue						
TJRV North East Trail Connection	1017611	2012-13	\$ 505,877	—	—	—	—	\$ 73,061
<i>Project Scope:</i>		This project is for part of a 22.5 mile trail system in the Tijuana River Valley Regional Park.						
<i>Funding Source(s):</i>		General Fund, State Aid Other State						
TJRV Mesa Trails Construction	1018373	2013-14	\$ 1,437,464	—	—	—	—	\$ 118,597
<i>Project Scope:</i>		This project is for part of a 22.5 mile trail system in the Tijuana River Valley Regional Park.						
<i>Funding Source(s):</i>		General Fund, State Aid Other State, Miscellaneous Revenue						
TJRV South West Trails Construction	1018372	2013-14	\$ 2,086,741	—	—	—	—	\$ 106,741
<i>Project Scope:</i>		This project is for part of a 22.5 mile trail system in the Tijuana River Valley Regional Park.						
<i>Funding Source(s):</i>		General Fund, State Aid Other State, Miscellaneous Revenue						
TJRV Interpretive Loop Trail	1018182	2012-13	\$ 698,741	—	—	—	—	\$ 215,103
<i>Project Scope:</i>		This project is for part of a 22.5 mile trail system in the Tijuana River Valley Regional Park.						
<i>Funding Source(s):</i>		General Fund, State Aid Other State						
Valley Park Acquisition	1005335	2003-04	\$ 500,000	—	—	—	—	\$ 6,227
<i>Project Scope:</i>		This project is for the land acquisition of Valley Center Park.						
<i>Funding Source(s):</i>		General Fund						
Volcan Mountain West Acquisition	1000040	2002-03	\$ 2,094,884	—	—	—	—	\$ 1,898,650
<i>Project Scope:</i>		This project is for land acquisition in Volcan Mountain West.						
<i>Funding Source(s):</i>		General Fund						
Waste Site Land Acquisitions	1000011	1997-98	\$ 8,238,400	—	—	—	—	\$ 1,987,614
<i>Project Scope:</i>		This project is for the acquisition of property as required by the Purchase and Sale Agreement of the Solid Waste Divestiture.						
<i>Funding Source(s):</i>		Proceeds from Solid Waste						
<b>Total LUEG Capital Outlay Fund</b>	<b>72</b>	<b>—</b>	<b>\$ 113,283,506</b>	<b>\$ 12,949,372</b>	<b>\$ 2,100,000</b>	<b>(83.8)</b>	<b>—</b>	<b>\$ 75,656,878</b>

## ■ ■ ■ Outstanding Capital Projects by Fund

### Capital Outlay Fund

Community Services Group (CSG)								
Project Name	Project Number	Fiscal Year Project Established	Total Appropriations through 2/28/2014	Fiscal Year 2013-14 Adopted Budget	Fiscal Year 2014-15 Recommended Budget	% Change	Fiscal Year 2015-16 Recommended Budget	Total Expenditures through 2/28/2014
Animal Shelter Multi-Purpose Barn	1014127	2010-11	\$ 200,000	—	—	—	—	\$ 196,817
<i>Project Scope:</i> The County of San Diego currently operates three animal shelters throughout the County. This project is for the new facility at the animal shelter in Bonita. This multi-purpose 1,000 square foot structure will provide housing for sick, injured or newborn livestock; grooming area for cats and dogs; and housing for animals that are being held for extended periods as evidence in criminal or administrative cases.								
<i>Funding Source(s):</i> General Fund								
Campo Community Center Stormwater System Improvements	1010779	2006-07	\$ 185,000	—	—	—	—	\$ 152,365
<i>Project Scope:</i> Improvements to Campo Community Center Stormwater System.								
<i>Funding Source(s):</i> Community Development Block Grants								
County Operations Center and Annex Phase 1A	1011214	2007-08	\$ 176,834,944	—	—	—	—	\$ 166,904,644
<i>Project Scope:</i> Phase 1A, includes the construction of two office buildings, an energy efficient central plant and one parking structure. This phase will provide improved working space for the County employees currently located at the County Operations Center (COC).								
<i>Funding Source(s):</i> General Fund, Reimbursement from SDRBA - COC - General Fund, Reimbursement from SDRBA - COC - Bond Proceeds								
County Operations Center and Annex Phase 1B	1014125	2010-11	\$ 113,000,000	—	—	—	—	\$ 111,078,648
<i>Project Scope:</i> Phase 1B, will include two additional 150,000 square foot office buildings, a conference center with cafeteria, and improvements to existing COC buildings to accommodate departmental moves. The project will provide a single, cohesive campus for County employees who are currently located at the COC, the Annex and various leased properties; provide more parking and improved accessibility to County clients and is designed to LEED Gold standards for improved energy efficiency and sustainability.								
<i>Funding Source(s):</i> General Fund, Reimbursement from SDRBA - COC - General Fund								
HHSa PSG CSG Office Relocation	1015131	2008-09	\$ 74,051,035	—	—	—	—	\$ 67,505,395
<i>Project Scope:</i> The HHSa PSG CSG Office Relocation project is related to the COC and Annex Redevelopment projects, to relocate departments as a result of the COC and Annex Redevelopment. Additional project elements include acquisition of 9235 - 9295 Chesapeake Drive in the City of San Diego, and constructing a facility for the Registrar of Voters, upgrading Fleet facilities, and improving tenant area for the County Mail Services, Sheriff Transportation and Probation Work Projects.								
<i>Funding Source(s):</i> General Fund, Miscellaneous Revenue, Reimbursement from SDRBA - COC - General Fund, Reimbursement from SDRBA - COC - Bond Proceeds								
Long-Term Animal Care Facility	1015559	2011-12	\$ 460,000	—	—	—	—	\$ 319,755
<i>Project Scope:</i> The County of San Diego currently operates three animal shelters throughout the County. This project is for the new facility at the animal shelter in Bonita which is expected to house 15-18 animals being held for extended periods of time. The project includes larger kennels, an integrated exercise area and interaction areas.								
<i>Funding Source(s):</i> General Fund								
RICC CalTrans Replacement Property Ramona Acquisition	1018658	2013-14	\$ 37,500	—	—	—	—	—
<i>Project Scope:</i> Ramona Intergenerational Community Center (RICC) Land Acquisition project will provide for the acquisition of the current CalTrans property adjoining the new Library on Main Street.								
<i>Funding Source(s):</i> General Fund								
RICC Caltrans Replacement Property Julian Acquisition	1018659	2013-14	\$ 37,500	—	—	—	—	—
<i>Project Scope:</i> RICC Land Acquisition project will provide for the acquisition of the current Caltrans property adjoining the new Library on Main Street.								
<i>Funding Source(s):</i> General Fund								
<b>Total CSG Capital Outlay Fund</b>	<b>8</b>	<b>—</b>	<b>\$ 364,805,979</b>	<b>—</b>	<b>—</b>	<b>—</b>	<b>—</b>	<b>\$346,157,624</b>



## Capital Outlay Fund

Finance and General Government Group (FGG)								
Project Name	Project Number	Fiscal Year Project Established	Total Appropriations through 2/28/2014	Fiscal Year 2013-14 Adopted Budget	Fiscal Year 2014-15 Recommended Budget	% Change	Fiscal Year 2015-16 Recommended Budget	Total Expenditures through 2/28/2014
Cedar and Kettner Development	1015093	2010-11	\$ 36,100,000	—	—	—	—	\$ 3,698,281
<i>Project Scope:</i> The development of County-owned property, located at the intersection of Cedar Street and Kettner Boulevard in downtown San Diego (Cedar and Kettner), to provide County employees as well as new residential, office and retail development to support the surrounding community. Cedar and Kettner encompasses approximately 52,500 square feet. The parking structure will provide up to 700 parking spaces to employees and visitors with business at the County Administration Center (CAC).								
<i>Funding Source(s):</i> General Fund, Aid from Redevelopment Agencies, Rents & Concessions, Reimbursement from SANCAL - Bond Proceeds								
County Administration Center Waterfront Park	1015204	2002-03	\$ 49,400,000	—	—	—	—	\$ 33,346,241
<i>Project Scope:</i> The CAC Waterfront Park will convert the surface parking lots on the north and south sides of the CAC into a community and regional open space amenity: a public waterfront park, providing facilities for organized activities, such as weddings and community events, and recreational activities, such as walking and picnicking. Other components of the Project include large civic greens, children's play area, garden rooms, and an expansive interactive fountain. This project includes the design and construction of new landscape and hardscape over one underground parking structure to replace current paved surface parking								
<i>Funding Source(s):</i> General Fund, Aid from Redevelopment Agencies, Rents & Concessions, Reimbursement from SANCAL - Bond Proceeds								
ARCC El Cajon Branch Office Building	1018194	2013-14	\$ 7,500,000	\$ 7,500,000	—	—	—	—
<i>Project Scope:</i> This project will replace the existing 8,920 square foot County facility located on Magnolia Street in the City of El Cajon, housing Assessor/Recorder/County Clerk (ARCC) staff and operations. The replacement facility is anticipated to be approximately 14,500 square feet, and will provide office and parking space to accommodate growth in ARCC staff. The project includes acquisition of additional property adjacent to the current site and the new facility will provide a more functional and efficient facility allowing for improved operations. The replacement ARCC El Cajon Branch Office facilities are anticipated to include 65 parking spaces and accommodate up to 40 staff members.								
<i>Funding Source(s):</i> General Fund, Miscellaneous Revenue from the Recorder Modernization Fund								
<b>Total FGG Capital Outlay Fund</b>	<b>3</b>	<b>—</b>	<b>\$ 93,000,000</b>	<b>\$ 7,500,000</b>	<b>—</b>	<b>(100.0)</b>	<b>—</b>	<b>\$ 37,044,522</b>
<b>Total Capital Outlay Fund</b>	<b>90</b>	<b>—</b>	<b>\$ 578,058,578</b>	<b>\$ 20,449,372</b>	<b>\$ 2,100,000</b>	<b>(89.7)</b>	<b>—</b>	<b>\$ 460,067,653</b>

## County Health Complex Fund

Health and Human Services Agency (HHSA)								
Project Name	Project Number	Fiscal Year Project Established	Total Appropriations through 2/28/2014	Fiscal Year 2013-14 Adopted Budget	Fiscal Year 2014-15 Recommended Budget	% Change	Fiscal Year 2015-16 Recommended Budget	Total Expenditures through 2/28/2014
Juvenile Hall (2011) Mental Health Services Office Building	1016139	2011-12	\$ 259,000	—	—	—	—	\$ 211,366
<i>Project Scope:</i> Permanent, one story 800 square foot new construction modular or pre-fabricated building on a concrete foundation with utilities, located on existing County property.								
<i>Funding Source(s):</i> State Aid Mental Health								
<b>Total HHSA County Health Complex Fund</b>	<b>1</b>	<b>—</b>	<b>\$ 259,000</b>	<b>—</b>	<b>—</b>	<b>—</b>	<b>—</b>	<b>\$ 211,366</b>
<b>Total County Health Complex Fund</b>	<b>1</b>	<b>—</b>	<b>\$ 259,000</b>	<b>—</b>	<b>—</b>	<b>—</b>	<b>—</b>	<b>\$ 211,366</b>

## ■ ■ ■ Outstanding Capital Projects by Fund

### Justice Facility Construction Fund

Public Safety Group (PSG)								
Project Name	Project Number	Fiscal Year Project Established	Total Appropriations through 2/28/2014	Fiscal Year 2013-14 Adopted Budget	Fiscal Year 2014-15 Recommended Budget	% Change	Fiscal Year 2015-16 Recommended Budget	Total Expenditures through 2/28/2014
Camp Barrett Staff Housing	1018562	2013-14	\$ 425,000	—	—	—	—	\$ 6,440
<i>Project Scope:</i> Purchase and installation of two manufactured dormitory homes at the Juvenile Ranch Facility for Probation staff.								
<i>Funding Source(s):</i> General Fund								
East Mesa Reentry Facility	1016416	2011-12	\$ 38,064,000	—	—	—	—	\$ 19,630,292
<i>Project Scope:</i> The East Mesa Reentry Facility project will add 400 beds and support facilities to the East Mesa Reentry Facility in order to respond to the growing number of inmates assigned to local custody due to AB 109, <i>Public Safety Realignment</i> (2011), and focuses on the needs of that population for specific services as recommended by the Community Correction Partnership. To accommodate this increased need, the additional beds of the East Mesa Reentry Facility project will increase the inmate capacity from approximately 3,650 to 4,050 at the East Mesa Reentry Complex. The project will also include attendant improvements to the existing central plant, kitchen, and intake and administrative building at the East Mesa Reentry Facility for the increased demands.								
<i>Funding Source(s):</i> General Fund								
Juvenile Ranch Facility Staff	1018561	2013-14	\$ 540,000	—	—	—	—	\$ 6,992
<i>Project Scope:</i> Purchase and installation of three manufactured dormitory homes at the Juvenile Ranch Facility for Probation staff.								
<i>Funding Source(s):</i> General Fund								
Medical Examiner and Forensic Center*	1006566	2004-05	\$ 67,720,422	—	—	—	—	\$ 67,720,422
<i>Project Scope:</i> Medical Examiner and County Veterinarian staff provide forensic death investigations and perform autopsies and necropsies, respectively; pathology and toxicology analyses; and laboratory diagnostics. This project is for the planning, design and construction of the new facility at the County Operations Center. The new joint facility will allow the Medical Examiner to respond to the requirements of a growing County population for the next 30 years.								
<i>Funding Source(s):</i> General Fund								
Next Generation RCS Site Acquisition	1017536	2012-13	\$ 140,000	—	—	—	—	\$ 124,674
<i>Project Scope:</i> Design, procure and install next generation regional public safety communications system								
<i>Funding Source(s):</i> General Fund								
Pine Valley Substation	1015198	1999-00	\$ 3,510,000	—	—	—	—	\$ 1,715,565
<i>Project Scope:</i> Funding for the acquisition of site and to construct and develop new 4,250 square foot facility in Pine Valley. The station was identified as a future need in the Law Enforcement Master Plan to accommodate population growth in the northeastern unincorporated area of the county.								
<i>Funding Source(s):</i> General Fund								
Ramona Station Land Acquisition	1014136	2007-08	\$ 1,000,000	—	—	—	—	—
<i>Project Scope:</i> Funding for the acquisition of a three to five acre site to construct a, 15,000 square foot, station in Ramona for the Northern/Rural Command area. The station was identified as a future need in the Law Enforcement Master Plan to accommodate population growth in the northeastern unincorporated area of the county.								
<i>Funding Source(s):</i> General Fund								
Rancho San Diego Sheriff Station	1015199	2004-05	\$ 15,399,211	—	—	—	—	\$ 14,653,289
<i>Project Scope:</i> The Sheriff's Department of the County of San Diego provides law enforcement services to 107 square miles of unincorporated southeast San Diego County. In an effort to better serve the unincorporated populations of Rancho San Diego, Spring Valley, Jamul and surrounding areas, the Rancho San Diego community has been selected as the location for a new Sheriff station. The Rancho San Diego Sheriff Station is planned to be a 26,000 square foot facility located on 4.5 acres, and will be able to accommodate 130 personnel. This project is for the design and construction of the freestanding Sheriff Station.								
<i>Funding Source(s):</i> General Fund, Sheriff Asset Forfeiture Fund, Prop 172 Fund								

\*Project Scheduled to close June 30, 2014 and will no longer be displayed in Operational Plan.

## Justice Facility Construction Fund

Public Safety Group (PSG)								
Project Name	Project Number	Fiscal Year Project Established	Total Appropriations through 2/28/2014	Fiscal Year 2013-14 Adopted Budget	Fiscal Year 2014-15 Recommended Budget	% Change	Fiscal Year 2015-16 Recommended Budget	Total Expenditures through 2/28/2014
Regional Communication System Harmony Hill Site Acquisition*	1014440	2010-11	\$ 203,500	—	—	—	—	\$ 183,538
<i>Project Scope:</i> Design, procure and install next generation regional public safety communications system								
<i>Funding Source(s):</i> Miscellaneous Revenue								
Sheriff's Crime Lab	1018895	2014-15	—	—	\$ 49,940,000	—	—	—
<i>Project Scope:</i> Co-location of the crime laboratory, property and evidence facility and central investigations offices will benefit the Sheriff's Department through increased efficiency as a result of adjacency to the County Medical Examiner facility and co-location. This project is for 150,000 square foot structure to house crime lab, criminal evidence warehouse and central investigations unit offices. Current County Operations Center master plan includes Fleet Maintenance Facility which must be relocated to crime lab site.								
<i>Funding Source(s):</i> General Fund								
Sheriff Defensive Tactics Building	1014135	2007-08	\$ 712,000	—	—	—	—	\$ 61,583
<i>Project Scope:</i> Proposed new 3,600-square foot building for defensive tactics training.								
<i>Funding Source(s):</i> General Fund, Sheriff Asset Forfeiture Fund								
Women's Detention and Reentry Facility	1015195	1997-98	\$ 303,600,000	—	—	—	—	\$ 124,072,885
<i>Project Scope:</i> The San Diego County Women's Detention and Reentry Facility (WDRF) will serve as the primary booking and holding facility for women arrested in the county, and will replace the current facility located in Santee in East San Diego County. The WDRF project is designed in two phases. Phase I includes the construction of 832 beds, a central utility plant, facilities for intake/release and transfer, food and medical services, administration, and programs. Inmates in the current facility are expected to be transferred to the replacement WDRF in summer 2014. Demolition of the old buildings will commence following the transfer.								
<i>Funding Source(s):</i> General Fund								
<b>Total PSG Justice Facility Construction Fund</b>	<b>12</b>	<b>—</b>	<b>\$ 431,314,133</b>	<b>—</b>	<b>\$ 49,940,000</b>	<b>—</b>	<b>—</b>	<b>\$ 228,175,680</b>
<b>Total Justice Facility Construction Fund</b>	<b>12</b>	<b>—</b>	<b>\$ 431,314,133</b>	<b>—</b>	<b>\$ 49,940,000</b>	<b>—</b>	<b>—</b>	<b>\$ 228,175,680</b>

## Library Projects Fund

Public Safety Group (PSG)								
Project Name	Project Number	Fiscal Year Project Established	Total Appropriations through 2/28/2014	Fiscal Year 2013-14 Adopted Budget	Fiscal Year 2014-15 Recommended Budget	% Change	Fiscal Year 2015-16 Recommended Budget	Total Expenditures through 2/28/2014
Downtown San Diego Law Library Remodel	1014128	2009-10	\$ 4,249,000	—	—	—	—	\$ 4,175,826
<i>Project Scope:</i> Infrastructure overhaul, including HVAC, electrical, life safety, plumbing systems to bring them to code as well as replace worn and deteriorated equipment with energy efficient equipment. Correct ADA deficiencies. Improve interior space usage to meet improved service delivery plans. Refresh interior finishes.								
<i>Funding Source(s):</i> General Fund								
<b>Total PSG Library Projects Fund</b>	<b>1</b>	<b>—</b>	<b>\$ 4,249,000</b>	<b>—</b>	<b>—</b>	<b>—</b>	<b>—</b>	<b>\$ 4,175,826</b>

\*Project Scheduled to close June 30, 2014 and will no longer be displayed in Operational Plan.

## ■ ■ ■ Outstanding Capital Projects by Fund

### Library Projects Fund

Community Services Group (CSG)								
Project Name	Project Number	Fiscal Year Project Established	Total Appropriations through 2/28/2014	Fiscal Year 2013-14 Adopted Budget	Fiscal Year 2014-15 Recommended Budget	% Change	Fiscal Year 2015-16 Recommended Budget	Total Expenditures through 2/28/2014
Alpine Branch Library	1015202	2001-02	\$ 10,194,686	\$ 9,811,301	—	(100.0)	—	\$ 454,731
<i>Project Scope:</i> Proposed replacement for 3,000 square foot facility with new 13,500 square foot freestanding library building.								
<i>Funding Source(s):</i> General Fund								
Borrego Springs Community Library	1018705	2013-14	\$ 200,000	—	\$ 9,750,000	—	—	\$ 4,572
<i>Project Scope:</i> This will be a 13,500 square foot freestanding library in Borrego Springs. This project includes the assessment of proposed land donation of approximately 2.5-acre site with an estimated value of \$55,000.								
<i>Funding Source(s):</i> General Fund								
Descanso Branch Library Expansion	1000262	2002-03	\$ 425,860	—	—	—	—	\$ 401,521
<i>Project Scope:</i> Expand existing library to add a community room and other improvements.								
<i>Funding Source(s):</i> General Fund								
Imperial Beach Library	1018191	2013-14	\$ 8,420,000	\$ 8,420,000	—	—	—	\$ 94,180
<i>Project Scope:</i> This project will replace the current 5,000 square foot Imperial Beach Branch of the County Library with a larger facility of up to 14,000 feet. The project includes redevelopment of the site in general, improving the connectivity between the Library and the Imperial Beach Community Center.								
<i>Funding Source(s):</i> General Fund								
Lincoln Acres Library and Community Center	1015200	2008-09	\$ 3,568,670	—	—	—	—	\$ 3,553,052
<i>Project Scope:</i> Replace the existing Community Center and Library building with new 5,225 square feet building. This project will include the construction of a new, expanded Lincoln Acres library, community room, Sheriff's Office and offices for the Lower Sweetwater Fire Protection District.								
<i>Funding Source(s):</i> Third Party Recovery, General Fund								
<b>Total CSG Library Projects Fund</b>	<b>5</b>	<b>—</b>	<b>\$ 22,809,216</b>	<b>\$ 18,231,301</b>	<b>\$ 9,750,000</b>	<b>(46.8)</b>	<b>—</b>	<b>\$ 4,508,056</b>
<b>Total Library Projects Fund</b>	<b>6</b>	<b>—</b>	<b>\$ 27,058,216</b>	<b>\$ 18,231,301</b>	<b>\$ 9,750,000</b>	<b>(46.8)</b>	<b>—</b>	<b>\$ 8,683,882</b>

### Multiple Species Conservation Program Fund

Land Use and Environment Group (LUEG)								
Project Name	Project Number	Fiscal Year Project Established	Total Appropriations through 2/28/2014	Fiscal Year 2013-14 Adopted Budget	Fiscal Year 2014-15 Recommended Budget	% Change	Fiscal Year 2015-16 Recommended Budget	Total Expenditures through 2/28/2014
Multiple Species Conservation Program Acquisitions (MSCP)	Various	1998-99	\$ 101,400,278	\$ 10,000,000	\$ 10,000,000	0.0	\$ 2,500,000	\$ 74,478,113
<i>Project Scope:</i> The County of San Diego MSCP was approved by the Board of Supervisors in 1997 and is an integral part of the County's program to conserve the region's natural environment and increase the amount of land available to the public for parks and open space, contributing to the County's strategic initiatives of sustainable environments and healthy families. Since 1997, over \$69.0 million from the General Fund has been spent on MSCP land acquisition, which leveraged \$87.0 million in federal, State and local grants, acquiring more than 18,679 acres throughout the county.								
<i>Funding Source(s):</i> General Fund, State Aid Other State, Federal Other Federal Grants, Miscellaneous Revenue, Other Sales								
<b>Total LUEG MSCP Fund</b>	<b>1</b>	<b>—</b>	<b>\$ 101,400,278</b>	<b>\$ 10,000,000</b>	<b>\$ 10,000,000</b>	<b>0.0</b>	<b>\$ 2,500,000</b>	<b>\$ 74,478,113</b>
<b>Total MSCP Fund</b>	<b>1</b>	<b>—</b>	<b>\$ 101,400,278</b>	<b>\$ 10,000,000</b>	<b>\$ 10,000,000</b>	<b>0.0</b>	<b>\$ 2,500,000</b>	<b>\$ 74,478,113</b>
<b>Total Capital Program</b>	<b>110</b>	<b>—</b>	<b>\$ 1,137,090,205</b>	<b>\$ 48,680,673</b>	<b>\$ 71,790,000</b>	<b>39.5</b>	<b>\$ 2,500,000</b>	<b>\$ 771,616,694</b>

\*Project Scheduled to close June 30, 2014 and will no longer be displayed in Operational Plan.

\*\*Edgemoor Development Fund is budgeted in the Capital Program; however, it is not a capital project and therefore not displayed in this table.