



# Agricultural Water Quality

## Program Enhancement



Kimberly Greene  
County of San Diego  
Dept. of Agriculture, Weights & Measures  
[Kimberly.Greene@sdcounty.ca.gov](mailto:Kimberly.Greene@sdcounty.ca.gov)  
C: 858-239-8414  
O: 858-614-7748





# Why Enhance this Program:

- adaptive management
- water quality
- routine AWQ inspections
- benefits to growers





# Agricultural Operations to be included in the Program Enhancement

Nurseries/  
Greenhouses  
(existing)\*

Groves/Vineyards

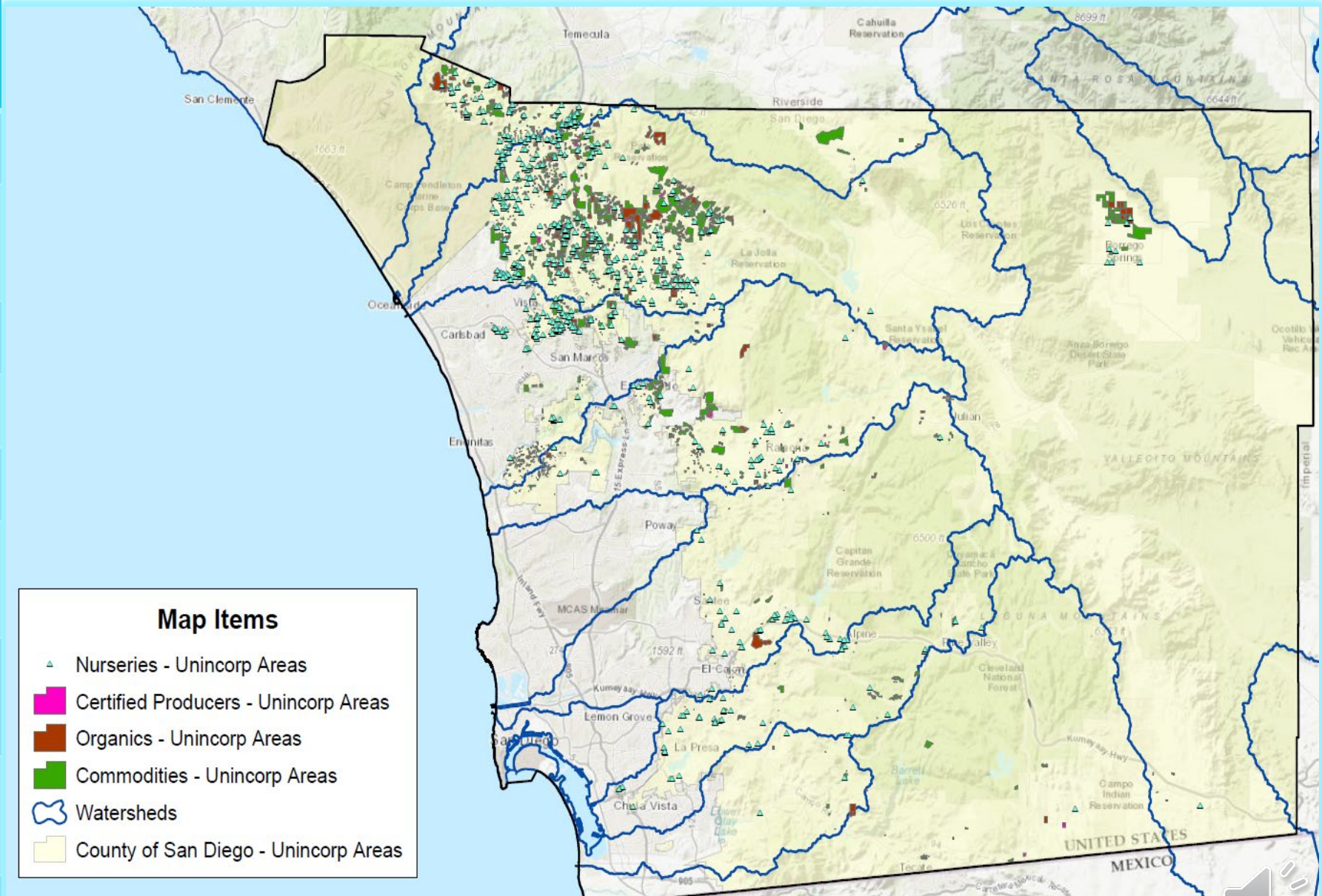
Row Crops

Any other operation  
that meets the  
RWQCB's definition of  
commercial agriculture



# Sites in Unincorporated County Potentially Subject to the Program Enhancement

Watershed	Sites
Santa Margarita	241
San Luis Rey	1,165
Carlsbad	391
San Dieguito	305
San Diego River	80
San Diego Bay (Sweetwater)	54
San Diego Bay (Otay)	9
Tijuana	19





# Parameters for Assessing Threat to Water Quality (TTWQ)





# Breakdown of Low, Medium, High



## Low

- Located within a watershed that does not have high priority water quality conditions.
- Minimal to zero connectivity or proximity to receiving waters
- Compliance History (last 3 inspections)



## Medium

- Located within a Impaired Watershed
- Impairment of watershed linked to agricultural activities
- Moderate connectivity or proximity to receiving waters.
- Compliance History (last 3 inspections)



## High

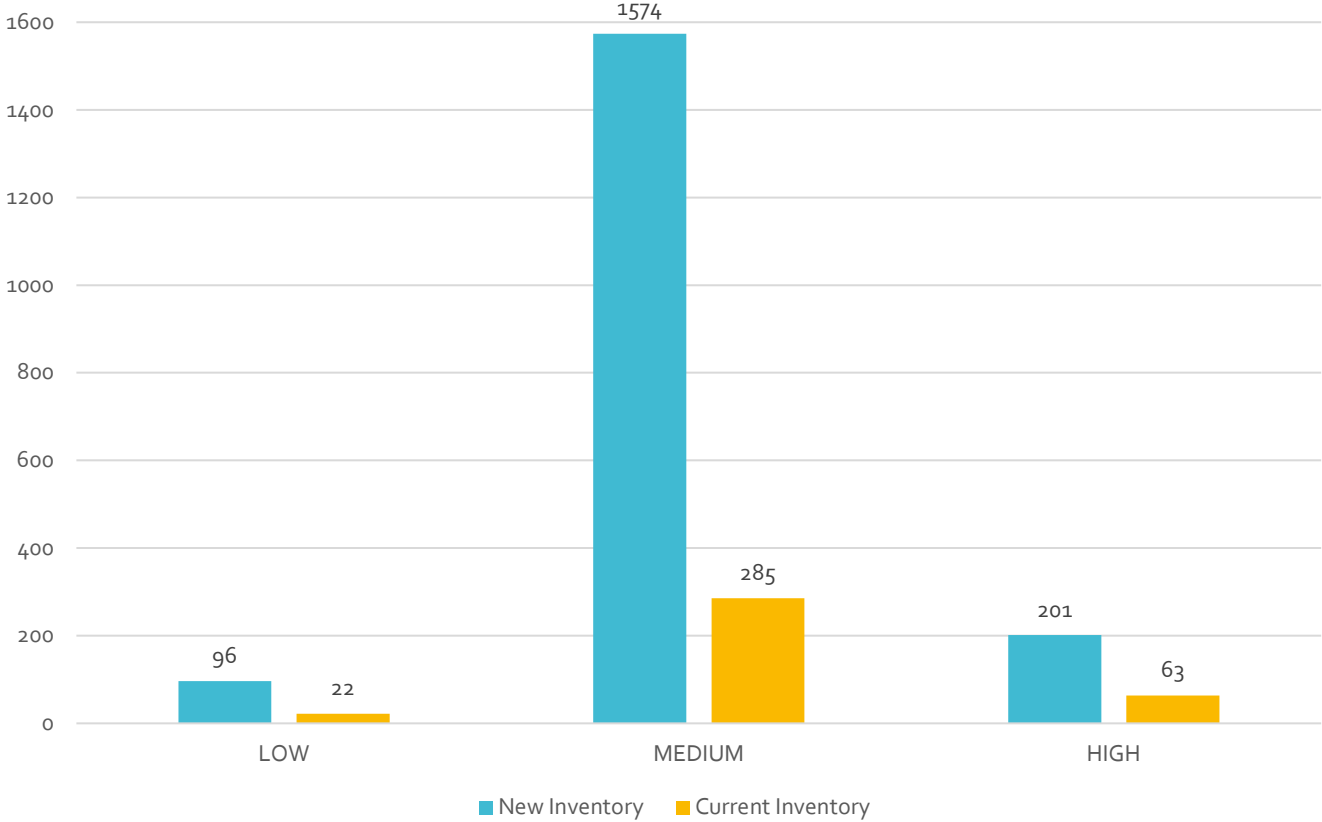
- Located within Impaired Watershed
- Impairment of watershed linked to agricultural activities (nutrients and sediment)
- High or direct connectivity or proximity to receiving waters
- Compliance History (last 3 inspections)





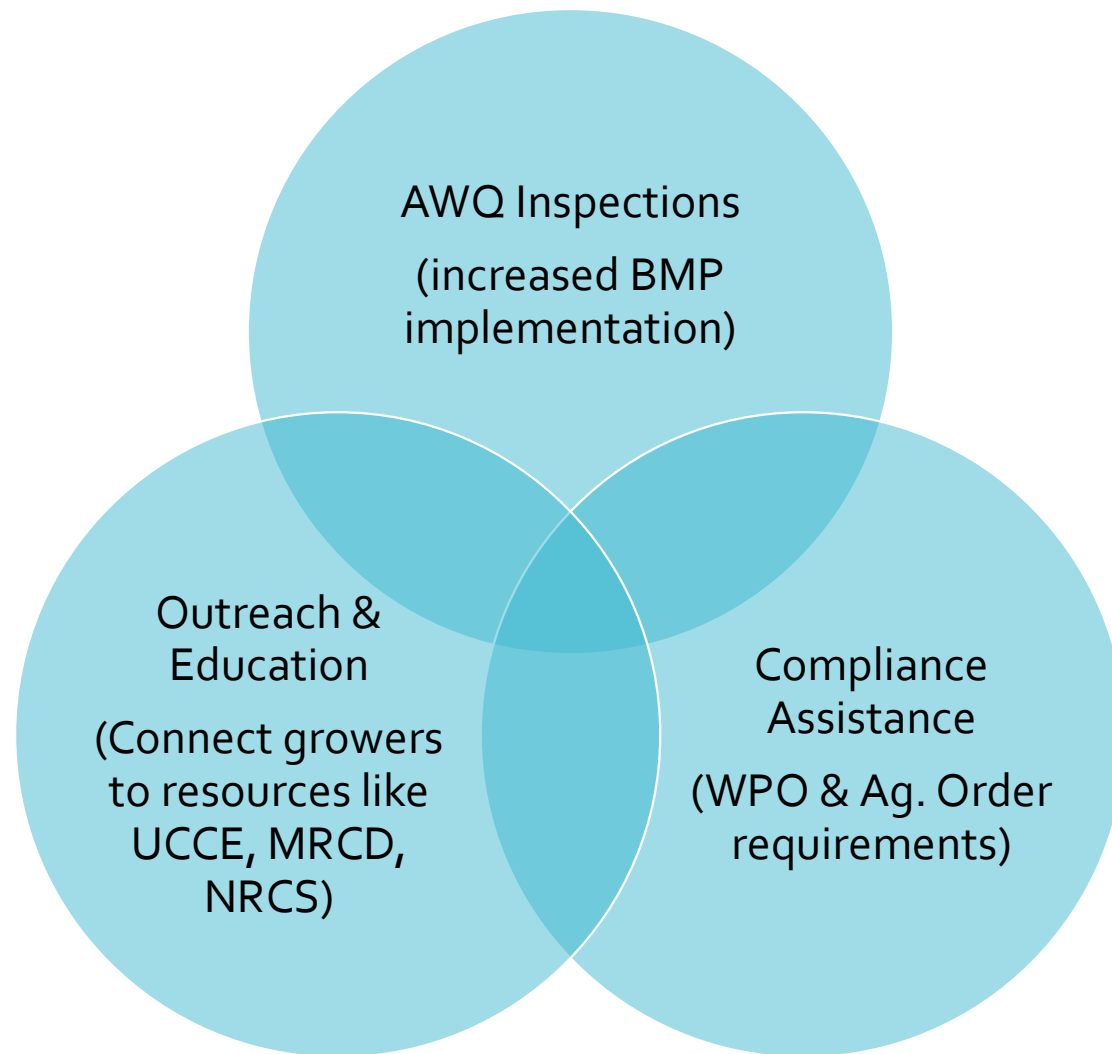
# Site Ranking

Number & Rank of Sites





# What this means for AWQ inventoried sites







# Funding Resources

## **Healthy Soils Incentives Program (HSP)**

<https://www.cdfa.ca.gov/oefi/healthysoils/>

## **State Water Efficiency and Enhancement Program (SWEEP)**

<https://www.cdfa.ca.gov/oefi/sweep/>

## **Environmental Quality Incentives Program (EQIP)**

<https://www.nrcs.usda.gov/wps/portal/nrcs/main/national/programs/financial/eqip/>

## **Conservation Stewardship Program (CSP)**

<https://www.nrcs.usda.gov/wps/portal/nrcs/main/national/programs/financial/csp/>

## **County of San Diego Agricultural Irrigation Efficiency Program (Waterscape Rebate Program)**

<https://www.sandiegocounty.gov/content/sdc/dpw/watersheds/RebatesIncentives/>

## **Legacy Pesticide Disposal Event**





# Technical Assistance Resources

## **Natural Resources Conservation Service (NRCS)**

Specialties include conservation practice (BMP) design, financial assistance, engineering, and technical assistance

[www.nrcs.usda.gov/wps/portal/nrcs/site/ca/home/](http://www.nrcs.usda.gov/wps/portal/nrcs/site/ca/home/)

## **Mission Resource Conservation Service (MRCD)**

Specialties include technical assistance, assessments, and education for crop, irrigation, and nutrient management

[www.missionrcd.org/agriculture](http://www.missionrcd.org/agriculture)

## **University of California Cooperative Extension (UCCE)**

Specialties include water and nitrogen management, plant management and protection, farm management, technical assistance, assessments and education

<http://cesandiego.ucanr.edu/>





# Upcoming Stakeholder Webinars

**Upcoming stakeholder outreach** will include:

- Contact information for local **financial & technical support** programs
- Demonstration of available online resources:
  - **ProjectCleanWater.org** to help farmers identify different watersheds & information on regional stormwater programs by jurisdiction
  - **USGS National Map** to help farmers view property characteristics & stormwater flowlines (<https://apps.nationalmap.gov/viewer/>)
- Annual **Stormwater Training** requirements



# Thank You

County of San Diego Department of Agriculture, Weights and Measures (AWM)  
Agricultural Water Quality (AWQ) Program  
Program Phone: 858-614-7786  
Program Webpage: [www.sandiegocounty.gov/content/sdc/awm/ag\\_water.html](http://www.sandiegocounty.gov/content/sdc/awm/ag_water.html)  
Program Email: [AWQ.AWM@sdcounty.ca.gov](mailto:AWQ.AWM@sdcounty.ca.gov)

AWQ Program Supervisor: Kimberly Greene  
[Kimberly.Greene@sdcounty.ca.gov](mailto:Kimberly.Greene@sdcounty.ca.gov)  
Cell: 858-239-8414  
Office: 858-614-7748

