



CDFA Citrus Division Update

San Diego – Valley Center Grower Meeting

April 10-11, 2025

California Timeline

- 2008 – First ACP detected in San Diego County
 - 20-mile radius quarantine
- 2009 – Citrus Pest and Disease Prevention Committee established
- 2012 – First HLB detection in Los Angeles County
 - 5-mile radius quarantine
- 2018 – ACP regional quarantine structure
- 2019 – CDFA Citrus Division established
 - Dedicated resources to protect California citrus

San Diego County HLBQ Timeline

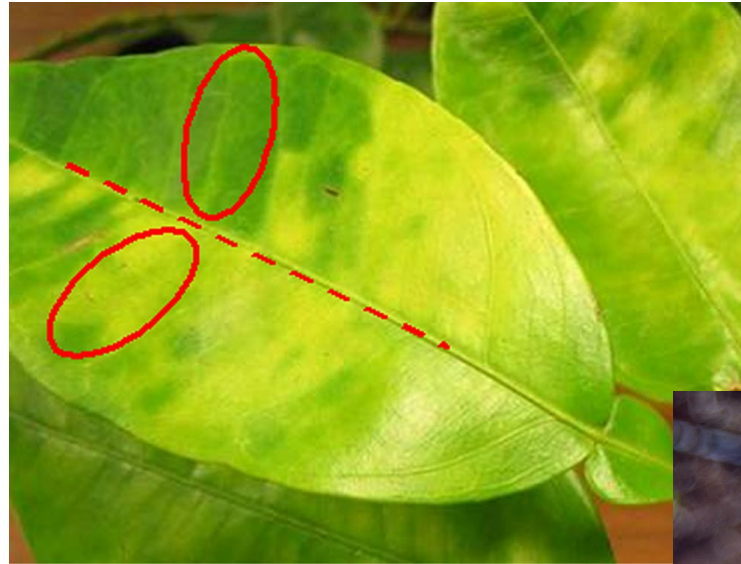
- August 2021 – first HLBQ in San Diego County (Oceanside)
- February 2023 – San Diego
- November 2023 – Valley Center
- September 2024 – Fallbrook
- March 2025 – Valley Center expansion

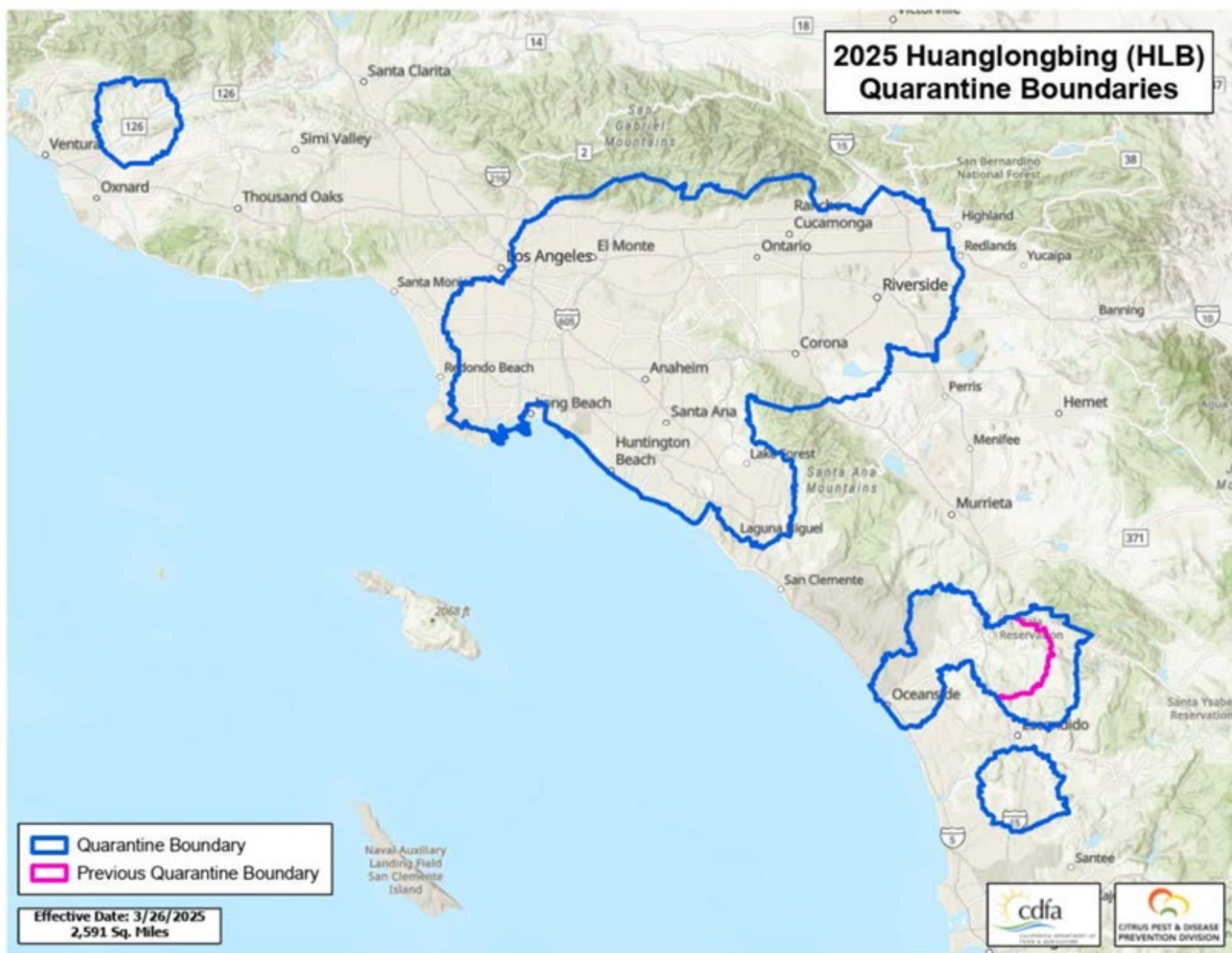


HLB Response and Quarantine

HLB Detections

- Los Angeles County: 1,938
 - Orange County: 6,551
 - Riverside County: 529
 - San Bernardino County: 631
 - San Diego County: 107
 - Valley Center:
 - 22 HLB+ trees
 - 2 CLas+ ACP
 - Ventura: 86
- Total: 9,843 (887 ACP+)**
(As of 4/4/25)





HLB Quarantine

- Limits the artificial movement of ACP/HLB on host material
- Citrus nursery stock must be maintained within an approved structure
- Possible additional mitigation measures required to move citrus fruit
- No exit strategy



Quarantine Requirements for Growers

- Have a compliance agreement (free)
 - Grower (includes 25+ tree properties)
 - Fruit seller (swap meet, flea market, roadside, or farmers' market)
- Work with FLCs, grove managers, transporters, and/or packinghouses with a compliance agreement
- Complete mitigation(s) to limit spread of ACP/HLB
- Communicate with San Diego County Ag Commissioner's office

Mitigations to Move Fruit – Performance Standard

Grower to Packinghouse

- Spray and harvest
- Field cleaning by machine
- Grate cleaning (with prior approval)
- Wet wash – standalone mitigation

Grower to Market or Roadside Stand

- Free from all stems and leaves
- Apply mitigation, if required (>1 acre and/or 100 citrus trees)
- Safeguard in transit

Preharvest Foliar Treatment

- Treat and harvest within 14 days of the application
- Foliar products recommended by the University of California
- Subset of products available for areawide treatment and integrated pest management
- Conventional products only

Product	EPA No.	Active Ingredient	Rate per Acre	Rate of Active Ingredient	PHI	REI	Maximum Amount per Crop Season	Minimum Application Volume by Air
Actara	100-938	25% thiamethoxam	4.0 - 5.5 fl oz	0.063 - 0.086 lb AI thiamethoxam	0d	12h	11 oz maximum per season	5 gpa
Admire Pro ^{1 2 3}	264-827	4.6 lb ai/gal imidacloprid	7 fl oz	0.25 lb AI per acre	0d	12h	14 oz	25 gpa
Baythroid XL	264-840	1 lb ai/gal beta-cyfluthrin	3.2 - 6.4 fl oz	0.025 - 0.050 lb AI beta cyfluthrin	0d	12h	6.4 fl oz of cyfluthrin or beta-cyfluthrin	25 gpa
Danitol 2.4 EC Spray	59639-35	2.4 lb ai/gal fenpropathrin	16 - 21.3 fl oz	0.3 - 0.4 lb AI fenpropathrin	1d	24h	21.3 oz	5 gpa
Fujimite SC	71711-4	Fenpyroximate	2-4 pt	0.11-0.21 lb AI/acre	3d	12h	8 pints	Not allowed
Fujimite XLO	71711-40	Fenpyroximate	2-4 pt	0.11-0.21 lb ai/acre	3d	12h	8 pints	Not allowed
Leverage 360	264-1104	1 lb ai/gal beta-cyfluthrin + 2 lb ai/gal imidacloprid	3.2 - 6.4 fl oz	0.025 - 0.50 lb AI beta-cyfluthrin + 0.05 - 0.1 lb AI imidacloprid	0d	12h	6.4 fl oz of cyfluthrin or beta-cyfluthrin	25 gpa
Mustang	279-3126	17.1% by weight zeta cypermethrin	4.3 oz	0.05 lb AI zeta cypermethrin	1d	12h	17.2 fl oz appl. 14 days apart	10 gpa
Mustang Maxx	279-3426	9.15% by weight zeta cypermethrin	4.0 oz	0.025 lb AI zeta cypermethrin	1d	12h	16 fl oz appl. 14 days apart	10 gpa
Sefina	7969-391	Alfidopyropen	14 fl oz	0.42 lb AI/gal	0d	12h	28 fl oz per acre per year	Not recommended
Sivanto 200 SL	264-1141	Flupyradifurone	10.5-14 fl oz	0.144-.183 lbs AI /acre	1d	12h	28 fl oz	10 gpa
Sivanto HL	264-1198	Flupyradifurone	5.5-7 fl oz	0.144-.183 lbs AI /acre	1d	12h	14 fl oz	10 gpa
Sivanto Prime	264-1141	Flupyradifurone	10.5-14 fl oz	0.144-.183 lbs AI /acre	1d	12h	28 fl oz	10 gpa
Tombstone	34704-912	2 lb ai/gal cyfluthrin	2-3.2 fl oz	0.031-0.05 lb AI cyfluthrin	0d	12h	6.4 fl oz of cyfluthrin or beta-cyfluthrin	25 gpa
Tombstone Helios	34704-978	2 lb ai/gal cyfluthrin	2-3.2 fl oz	0.031-0.05 lb AI cyfluthrin	0d	12h	6.4 fl oz of cyfluthrin or beta-cyfluthrin	25 gpa

*Maximum residue limits (MRLs) have not been fully established for all countries.

¹Do not use if a soil imidacloprid treatment has been applied to the orchard in the same season.

²Any 4F formulation of imidacloprid may be used at a rate of 8 oz.

³Any 4.6F formulation of imidacloprid may be used at a rate of 7 oz.



Field cleaning machine



Grate cleaning devices



Performance Standard

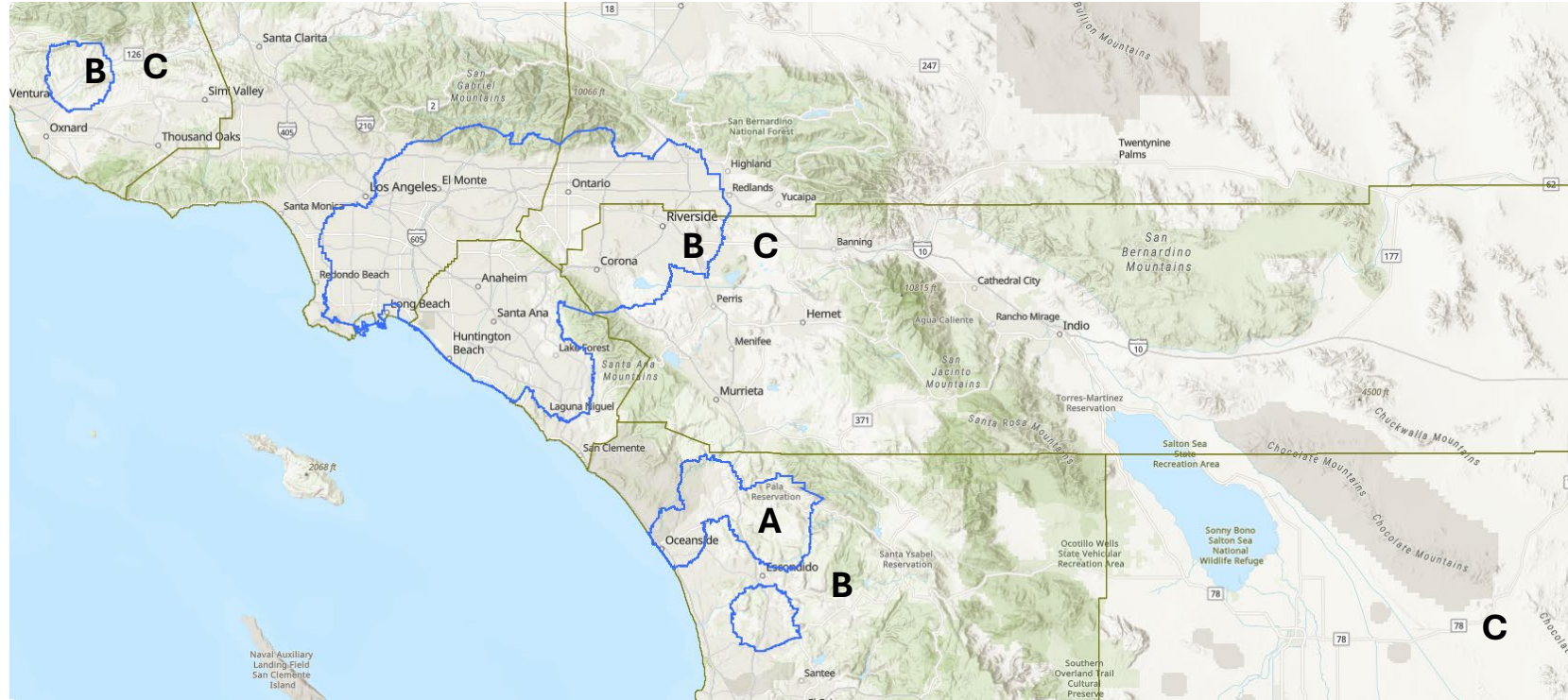
- Non-prescriptive mitigations. Move fruit while mitigating the pest risk
- Open to innovation and developing new protocols
- Ethyl formate fumigation (pending)



Mitigations to Move Fruit

- A to A – no mitigation
- A to B – 1 mitigation
- A to C – 2 mitigations or wet wash
- C to A – no mitigation

- Ask questions



Resources

- Citrus Division Webpage:
<https://www.cdffa.ca.gov/Citrus/>
- Quarantine Maps and Information:
https://www.cdffa.ca.gov/citrus/pests_diseases/hlb/regulation.html
- List Serve:
https://www.cdffa.ca.gov/citrus/pests_diseases/hlb/signup-email-updates.html
- Information for Growers and Grove Managers:
<http://phpps.cdffa.ca.gov/PE/InteriorExclusion/pdf/acpgrowerinformation.pdf>



Thank You

Keith Okasaki

Statewide Regulatory Manager

Keith.Okasaki@cdfa.ca.gov

