



United States Department of Agriculture

# California Disaster Assistance Webinar

**Moderated by: Gloria Montañó Greene,  
Deputy Under Secretary for Farm  
Production and Conservation**



**April 11, 2023**

**FARM PRODUCTION AND CONSERVATION**  
FSA | NRCS | RMA | Business Center

# Microsoft Teams Live Event

- To turn on closed captions, use the “Turn on live captions (preview)” function listed in the event menu.
- If you experience a delay, disconnect from the VPN.
- To pause event, click the pause button found in the lower-left corner of your screen.
- Event is being recorded and can be accessed by link you used to join.



United States Department of Agriculture

# **Rural Development (RD)**

## **Disaster Assistance Programs**



**Presented by Maria Gallegos Herrera  
USDA Rural Development State Director**

**FARM PRODUCTION AND CONSERVATION  
FSA | NRCS | RMA | Business Center**

# Rural Development Programs



# Section 504 Home Repair Loan and Grant Program

Very-low-income homeowners in eligible rural areas can make necessary repairs to homes.

## Grants

- Must be age 62+
- Maximum of \$10,000

## Loans

- Maximum of \$40,000
- 20 years – 1%

[Website](#)



# Section 502 Direct Home Loan Programs

Helps low-income families and individuals buy or build safe, affordable housing in rural areas.

## Overview

- No down payment, 100% financing
- Payment assistance available based on income
- New construction / purchase existing homes
- Closing cost and repairs may be included
- Support for very-low-income and low-income families/individuals

[Website](#)



# Priority Housing Access for Displaced Households

Allows families/individuals impacted by a federally declared disaster to be considered for Priority Placement into USDA RD's vacant multifamily housing units.

- FEMA registration required
- Displaced families can utilize a vacant unit nationwide
- Applicant must be below income thresholds
- Valid for 18 months from declaration
- Contact property directly – do not contact RD for placement
- Displaced RD tenants should contact their management company who will coordinate with USDA for a Letter of Priority Entitlement (LOPE)

# Community Facilities Loan and Grant Program

Helps expand, develop or support essential community services in rural communities.

## Overview

- Applicants include public bodies, nonprofits, Tribes, special districts
- Population limit of 20,000
- Types of projects - Health care, education, public safety, community services, public facilities, food systems, etc.
- Population & MHI determine grant percentages (max 75%)



# Water Systems – Emergency Community Water Assistance Grants

Helps rural communities when an emergency threatens the quality or quantity of safe, reliable drinking water.

## Overview

- Applicants include public bodies, nonprofits, Tribes
- Population limit of 10,000
- Federal disaster declaration not required
- Water source - \$1 million max  
Water distribution - \$150,000 max



# Water and Waste Disposal Loan and Grant Program

Helps expand, develop or improve water, sewer, solid waste and storm drainage systems in rural communities.

## Overview

- Applicants include public bodies, nonprofits, Tribes
- Population limit of 10,000
- Types of projects – Drinking water, sewer, solid waste, storm water
- Low-interest, long term financing



# Business Programs

- Business & Industry Loan Guarantee
- Relending Programs
- Rural Business Development Grant



# Rural Energy for America Program

Support for rural small businesses and ag producers for renewable energy and energy efficiency projects.

## Overview

- Solar, biomass, wind, etc.
- Installing energy efficient lighting
- Upgrading refrigeration systems
- Improving insulation, duct work, windows, and other building upgrades



# Value-Added Producer Grant Program

Helps agricultural producers start value-added activities: processing and marketing new products.

## Overview

- Planning - feasibility study, marketing and business plan
- Product packaging & labeling
- Ingredients
- Promotional materials

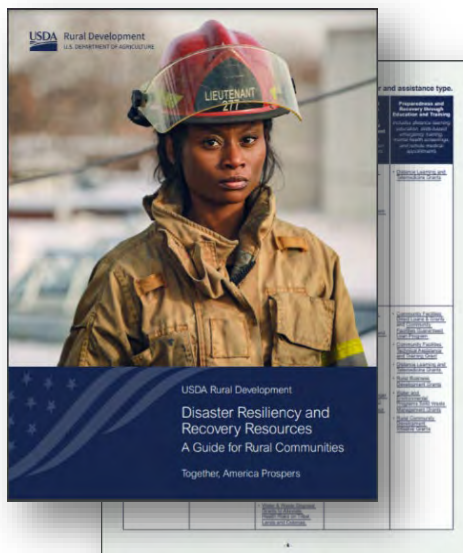


# Resources

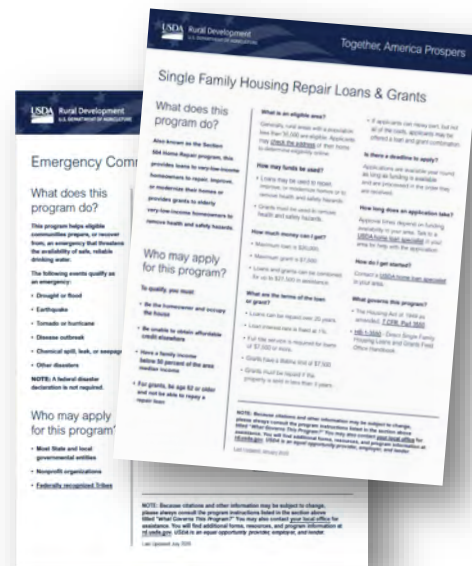
## Summary of Programs



## Disaster Resource Guide



## Program Fact Sheets



# Stay Connected



[rd.usda.gov/ca](https://rd.usda.gov/ca)



[CA.Info@usda.gov](mailto:CA.Info@usda.gov)



[@CaliforniaRD](https://twitter.com/CaliforniaRD)

Receive emails through GovDelivery: [USDA Rural Development \(govdelivery.com\)](https://www.usda.gov/rural-development)



United States Department of Agriculture

# Farm Service Agency (FSA)

## Disaster Assistance Programs



**Presented by Blong Xiong, California FSA State Executive Director  
Navdeep Dhillon, California FSA Farm Program Chief**

**FARM PRODUCTION AND CONSERVATION  
FSA | NRCS | RMA | Business Center**

# FSA – Severe Storm/Flood Assistance

## Emergency Conservation Program (ECP)

- Rehabilitate farmland and conservation structures damaged by natural disasters
  - Debris Removal
  - Land leveling
  - Fence repair/replacement
  - Conservation Structures
    - Irrigation systems/livestock water
- Cost share program
  - 75% of Agency established rates/90% for HU
  - 25% advance payment.

# FSA – Severe Storm/Flood Assistance

## Emergency Conservation Program (ECP) Continued

- Environmental review required prior to practice start
- Can't start project till application is approved
- Payment limitation of \$500,000 per person
- No AGI requirements
- Deadline to apply is Oct 13, 2023



# FSA – Severe Storm/Flood Assistance

## Emergency Loans

- Low interest loans available in Disaster-declared counties and contiguous counties
  - Various loan options/programs available
  - Must be at least a 30% loss
- Must be unable to obtain commercial loan
- Deadline to sign up: Within 8 months of the disaster

# Severe Storm/Flood Assistance: Crops/Trees/Bushes/Vines

## Tree Assistance Program (TAP)

- Replant or rehabilitate trees/vines destroyed or damaged by flood
- Loss in excess of normal mortality (18%)
- Cost share program
  - Rate per vine/tree
  - Land Prep by acre
- Deadline to sign up: Within 90 days of event or when loss become apparent
- Can't start project till application is approved
- Environmental review required prior to practice start
- Field visit by an FSA Loss Adjuster Required
- Annual acreage eligible for payment is limited to 1,000 acres
- Average Adjusted Gross Income cannot exceed \$900,000

# Severe Storm/Flood Assistance: Crops/Trees/Bushes/Vines

## Non-insured Crop Disaster Assistance Program (NAP)

- Provides financial assistance to producers of non-insurable crops to protect against natural disasters that result in lower yields or crop losses or prevents crop planting.
- Must have purchased coverage for the year of disaster
- Coverage level: up to 65/100. Grazing loss is only available at 50/55
- Service Fee: \$325 per crop
- Waiver of Service Fee and 50% reeducation in premium for SDA/ limited resource/veterans/beginning farmer or rancher
- Average Adjusted Gross Income cannot exceed \$900,000



# Severe Storm/Flood Assistance Livestock

## Livestock Indemnity Program (LIP)

- Provide benefits for eligible livestock death or injury
  - Death loss in excess of normal mortality
  - Injured-sold at reduced price due to injury cause by disaster event
- Payment rate difference by type and weight range
- Must File a Notice of loss within 30 days of event or when loss become apparent
- Proof of death or injury required
- Must be commercial livestock operation
- Average Adjusted Gross Income cannot exceed \$900,000



# Severe Storm/Flood Assistance Livestock

## Emergency Assistance for Livestock, Honeybees and Farm-Raised Fish Program (ELAP) – Grazing Livestock

- Provides benefits for livestock feed and grazing losses due to flooding.
- Covers loss of grazing land and stored feed losses
- Max of 150 days of daily feed cost or 150 days of lost grazing
- Must File a Notice of loss within 30 days of when loss become apparent
- Must be commercial livestock operation
- Average Adjusted Gross Income cannot exceed \$900,000

# Severe Storm/Flood Assistance Livestock

## Emergency Assistance for Livestock, Honeybees and Farm-Raised Fish Program (ELAP) – Honeybees

- Honeybee used for honey production, pollination or honeybee breeding
- Covers colony, hive or feed loss
- Covers loss in excess of normal mortality (22%)
- Must File a Notice of loss within 15 days of when loss is apparent
- Must be commercial operation
- Average Adjusted Gross Income cannot exceed \$900,000



# Stay Connected



[fsa.usda.gov/state-offices/California/index](https://fsa.usda.gov/state-offices/California/index)



@usdafsa

Receive emails through GovDelivery:

[https://public.govdelivery.com/accounts/USFSA/  
subscriber/new/](https://public.govdelivery.com/accounts/USFSA/subscriber/new/)



United States Department of Agriculture

# Natural Resources Conservation Service (NRCS)

## Disaster Assistance Programs



**Presented by Carlos Suarez**  
**California NRCS State Conservationist**

FARM PRODUCTION AND CONSERVATION  
FSA | NRCS | RMA | Business Center

# NRCS - Emergency Watershed Protection Program (EWP)



## What is EWP

- NRCS Emergency Watershed Protection Program
- Provides Federal assistance through Public Sponsors
- Relieves imminent hazards to life and property from flooding or soil erosion left as a result of a disaster event
- Typical Disaster Events include: fire, flood, hurricane and drought

## Eligibility Requirements

- Disaster causes damage to a watershed, streambank or levee which results in an imminent threat to life and property
- Project restores watersheds or protects property to reduce the threat to life and property to pre-disaster conditions
- There must be a local unit of government willing to sponsor the project and provide land rights, permits, local cost share and O&M

# Emergency Watershed Protection Program (EWP)

## Limitations of EWP

- Cannot be used to solve pre-existing problems or upgrade the level of protection
- Cannot be used to perform operation and maintenance work (i.e. sediment removal from debris basins)
- Cannot repair private or public transportation facilities or utilities

## EWP Timeline

- Emergency situation requires prompt response
- Requests for funding to NHQ within 60 days of disaster
- Exigency work. Must be completed within 10 days after funding is committed
- Larger projects must be completed within 220 days

# Emergency Watershed Protection Program (EWP)

## Getting Started

- Sponsor contacts local NRCS District Conservationist after disaster ([www.ca.nrcs.usda.gov](http://www.ca.nrcs.usda.gov))
- Sponsor submits letter of request to NRCS State Conservationist
- NRCS and Sponsor prepare DSR to determine eligibility
- Request funding and approve Cooperative Agreement
- Begin preparation of design and contract documents
- Award contract and certify completion of work

## Eligible Sponsors

- Local Units or subdivisions of State, City or County Government
- Native American Tribes or Tribal Organizations
- Must have legal authority to acquire necessary landrights, permits for work

# Environmental Quality Incentives Program (EQIP)

## Reapplication of Practice Destroyed by Natural Disaster

- If a practice in an active or completed (not expired) EQIP contract is destroyed by natural disaster, contract may be modified allowing participant to reapply the practice.

## EQIP Disaster (Disaster Specific Funding Opportunity)

- Provides financial assistance to assist producers recover from national, state, or locally declared disasters such as floods, hurricanes, wildfires and drought.
- Conservation practices included in the disaster funding are tailored to the type of disaster.

# Environmental Quality Incentives Program (EQIP)

- May include new practice to address the concerns caused by disaster such as stream bank restoration to address erosion caused by flooding or a failed practice, like flood-damaged fencing, from a previous EQIP contract.
- State Conservationist can waive certain programmatic requirements that allows for a faster turnaround on obligating contracts allowing producers to get to work quickly.
- Once funds are provided to state, funds are expected to be obligated and practices completed within 60-90 days.

# Stay Connected



[nrcs.usda.gov/conservation-basics/conservation-by-state/california](https://nrcs.usda.gov/conservation-basics/conservation-by-state/california)



@NRCSCalifornia

Receive emails through GovDelivery:

<https://public.govdelivery.com/accounts/usdanrcs/subscriber/new>



United States Department of Agriculture

# Questions?

