



# Integrated Pest Control Solutions

County of San Diego, Department of Agriculture Weights & Measures  
Integrated Pest Control Program  
Providing Safe and Effective Pest management using the least toxic methods  
ipc.awm@sdcounty.ca.gov



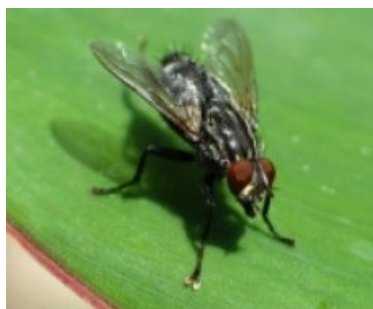
## Integrated Pest Management Quarter 2 Topic: Gnats & Flies Be Prepared for the New Organic Waste Recycling... #NOPESTS

California State Senate Bill 1383 requires the reduction of organic waste disposed of in landfills. Organic waste is food scraps and food-soiled paper from kitchens and food operations, and yard waste such as garden and landscape waste, organic textiles and carpets, and wood waste. In order to comply with SB 1383 and make San Diego County a more sustainable and thriving place for everyone, the County and City of San Diego have introduced a new Organic Waste Recycling program for all residents. This program represents the biggest change to trash and recycling in San Diego's history and supports the Zero Waste and Climate Action Plan goals.

### *How can I help prevent pests*

There is no getting around the fact that food scraps and composting attract bugs, insects, and rodents. And pests and rodents are not simply a nuisance but can also have negative impacts on your health. This means that if we want to create a home compost, we will have to deal with them at some stage ([learn about composting at home](#)). Rather than simply eliminating the pests you see right now, using Integrated Pest Management means looking at environmental factors that affect the pest and its ability to thrive. First, we must identify the pest:

- **House Fly:** This fly is the most frequent pest to humans. The common house fly is grayish black, about 1/4-inch-long, and covered in hair. In two weeks, one female fly may lay more than 1,000 eggs, typically in animal waste, household garbage, piled lawn clippings, or rotting fruit and vegetables.
- **Lesser House Fly:** The lesser house fly is seen flying around at eye level, hovering in the middle of a room, in a garage, on a patio, and under trees or other covered areas. Larvae develop from eggs laid in moist organic matter.
- **Rats and Mice:** Rats and Mice can spread disease, contaminate food, and cause costly structural damage. They are found in all areas of the County.





# Integrated Pest Control Solutions

County of San Diego, Department of Agriculture Weights & Measures  
 Integrated Pest Control Program  
 Providing Safe and Effective Pest management using the least toxic methods  
[ipc.awm@sdcounty.ca.gov](mailto:ipc.awm@sdcounty.ca.gov)



## Creating Unfavorable Conditions for Pests

### **Remove Attractants**

Focus management efforts on removing attractants such as food and water sources. Attractants may also include dog/cat feces, food scraps, fruit fallen off trees, or anything with a strong smell.

### **Proper Sanitation is a must:**

- **Cover garbage:** Flies like to breed in the "muck" often found at the bottom of garbage cans. Clean garbage cans regularly and keep lids on tight.
- **Grass clippings, straw, or hay:** get rid of clippings quickly or make sure they stay dry.
- **Cover compost piles:** Wet, decaying matter attracts flies. Make sure to keep compost piles tightly covered.
- **Rodent proof your home and storage buildings:** Check the outside of your house for holes or gaps the size of a dime or larger. Repair all openings using rodent proof materials: 1/4-inch, 18–22-gauge wire hardware cloth or steel wool. Avoid using spray insulation as rodents may chew through these materials. Install metal weather stripping under doors to remove gaps.

The County of San Diego, Department of Agriculture, Weights & Measures, Integrated Pest Control (IPC) Program performs several functions within the County of San Diego. IPC contributes to a safe and healthy work environment by providing safe and effective structural pest control at County facilities. IPC also performs weed control work along County roads and rights-of-ways, County airports, County sanitization and flood control conveyances, and County Parks. This work preserves road visibility and clearance; reduces fire danger along roadways and intersections; enhances drainage to prevent flooding; and helps protect the region’s biodiversity. We adhere to the Board of Supervisors’ Policy F-45, requiring the use of Integrated Pest Management techniques with an environmentally sound approach to reduce the use of chemical pest control methods.

		Quarter 1		Quarter 2		Quarter 3		Quarter 4	
Type-of-Pesticide		Quantity	Treatment Description	Quantity	Treatment Description	Quantity	Treatment Description	Quantity	Treatment Description
Herbicides									
	Dry	22 lbs.	334 Acres	0 lbs.	817 Acres				
	Liquid	393 gallons		608 gallons					
Insecticides									
	Dry	39 lbs.	375 application	19 lbs.	119 application				
	Liquid	3 gallons		3 gallons					
Rodenticide									
	Dry	444 lbs.	350 stations	758 Lbs.	350 stations				
Non-Chemical									
	Traps	1,562	72 facilities	937	116 facilities				