


Desert
Knapweed:
Volutaria tubuliflora

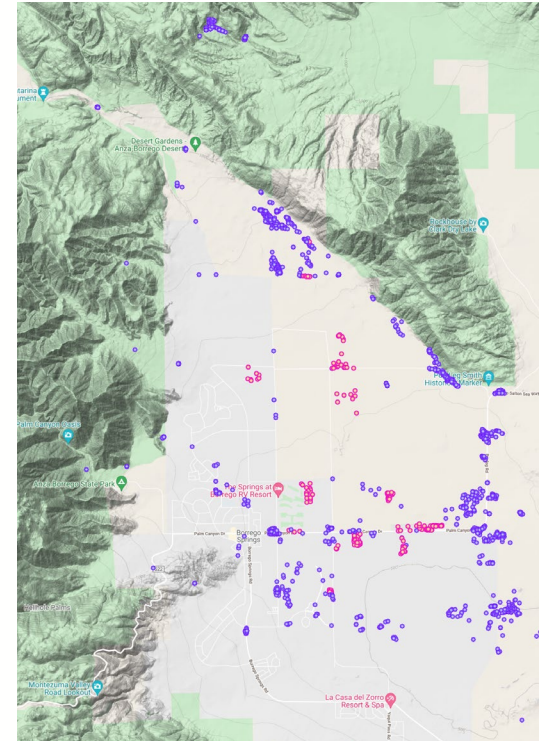




Volutaria (*Volutaria tubuliflora*) is a highly invasive, noxious weed and A-rated pest by the California Department of Food and Agriculture (CDFA).

- **A-rated pest definition:** A pest of known economic or environmental detriment and is either not known to be established in California or it is present in a limited distribution that allows for the possibility of eradication or successful containment.
- **“Noxious weed”** means any species of plant that is, or is liable to be, troublesome, aggressive, intrusive, detrimental, or destructive to agriculture, silviculture, or important native species, and difficult to control or eradicate

There are three known populations in North America, two of which are Borrego Springs and Chula Vista. Since 2016, AWM has worked to mitigate the spread of *Volutaria* by controlling it on roadsides, public property, and some private property; eradication or control efforts on private property require Right of Entry Authorization permits. While the Chula Vista site is small and well-controlled, *Volutaria* continues to spread in Borrego Springs.



County of San Diego's Department Agriculture, Weights and Measures (AWM) has partnered with CDFA, California Invasive Plant Council, Department of National Parks, Borrego Springs Revitalization Committee, and several other agencies to aid in the eradication of this invasive weed. Currently AWM's priority is the development and systematic distribution of outreach to obtain Right of Entry Authorization permits from property owners with known infestations of *Volutaria*. The plant produces a moderate number of seeds that spread along roads, although large plants may produce thousands of seeds; eradication of this Noxious weed is unattainable unless we can locate and treat weeds prior to seeding and thus eliminating the seed bank.

If you believe that *Volutaria tubuliflora* is located on your property, [CalFlora map](#), please assist in the eradication efforts of this invasive weed by filling out the [Right of Entry Authorization](#) form and emailing it to IPC.AWM@SDCounty.CA.gov.