

'Red Alerts' for San Diego County

Ageratina adenophora

Araujia sericifera

Arctotheca calendula

Carrichtera annua

Centaurea stobe

Lythrum salicaria

Malephora crocea/lutea

Pentameris airoides

Senecio quadridentatus

Sesbania punicea

Verbena litoralis

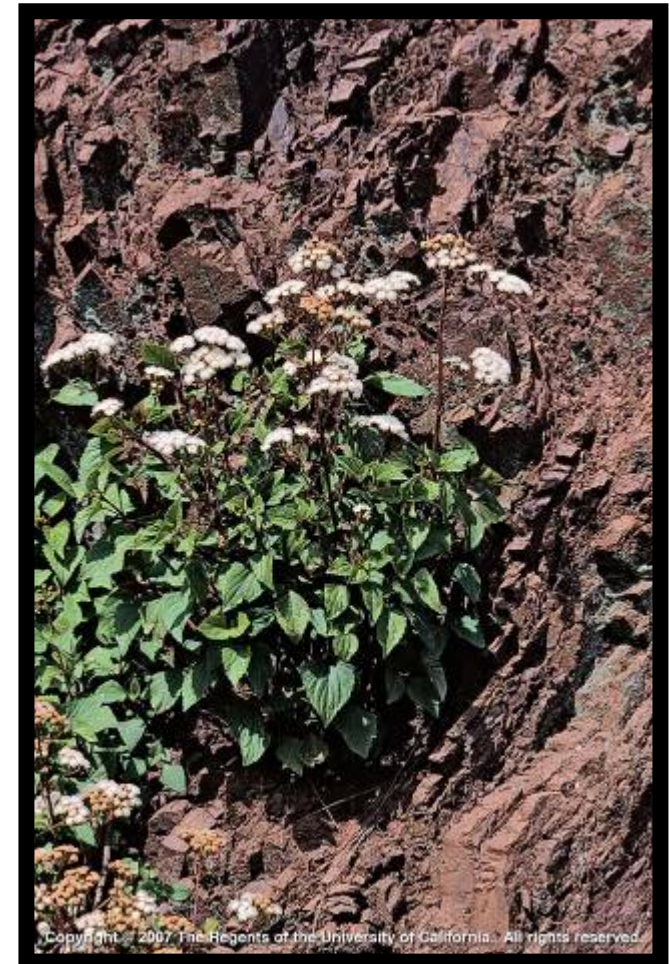
Volutaria tubuliflora

Non-native plants, most have already been rated by Cal-ipc as 'moderate' or 'high', some have not been rated yet but are suspected to be invasive because of how they currently behave in wildlands, some have only recently been found in San Diego County while others are well known but only known from a few populations, none of them are 'widespread' in wildlands

carolynmartus@gmail.com

Croftonweed (*Ageratina adenophora*)

photo by J. M. DiTomaso



Arctotheca calendula
Capeweed



Arctotheca calendula
apeweed



Araujia sericifera Bladderflower



Araujia sericifera Bladderflower



Ward's Weed (*Carrichtera annua*)

photos by J. Vinje and P. McConnell



Medusahead (Elymus (Taeniatherum) caput-medusae)

photo by
J. M. DiTomaso



Copyright © 2007 The Regents of the University of California. All rights reserved.

Medusahead (Elymus (Taeniatherum) caput-medusae) photo by J.M. DiTomaso



Copyright © 2007 The Regents of the University of California. All rights reserved.

Medusahead (Elymus (Taeniatherum) caput-medusae) photo by J.M. DiTomaso



Copyright © 2007 The Regents of the University of California. All rights reserved.

Purple loosestrife (*Lythrum salicaria*)

photos by J. M. DiTomaso



Malephora
luteola/
crocea

Crocea Iceplant
or Rocky Point
Iceplant





Pentameris airoides

False Hairgrass

- Annual, caespitose
- From South Africa, naturalized in Australia, found at CPEN



Senecio
quadridentatus
?





Red sesbania (*Sesbania punicea*)

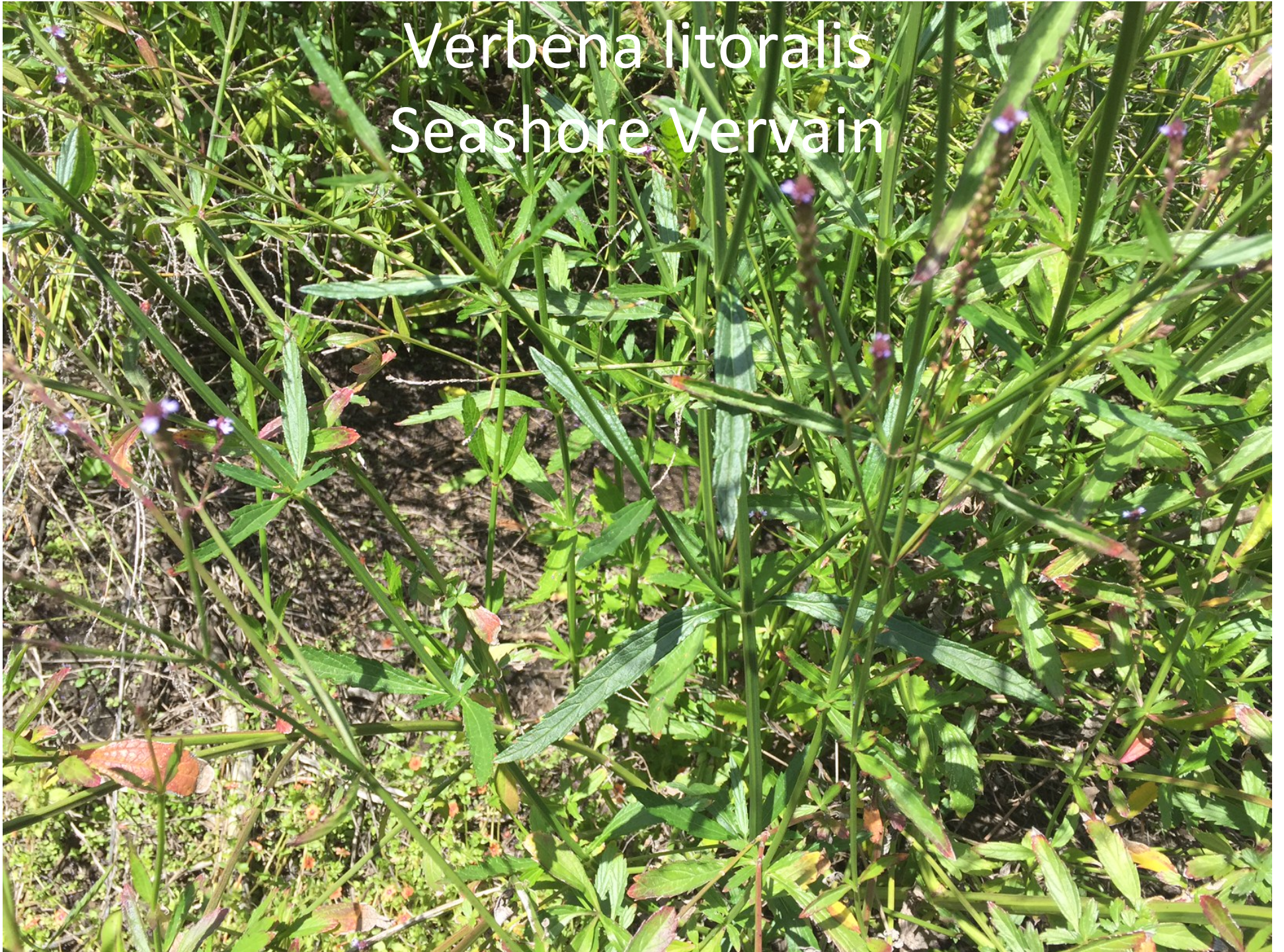
photos by J. M. DiTomaso



Verbena litoralis
Seashore Vervain

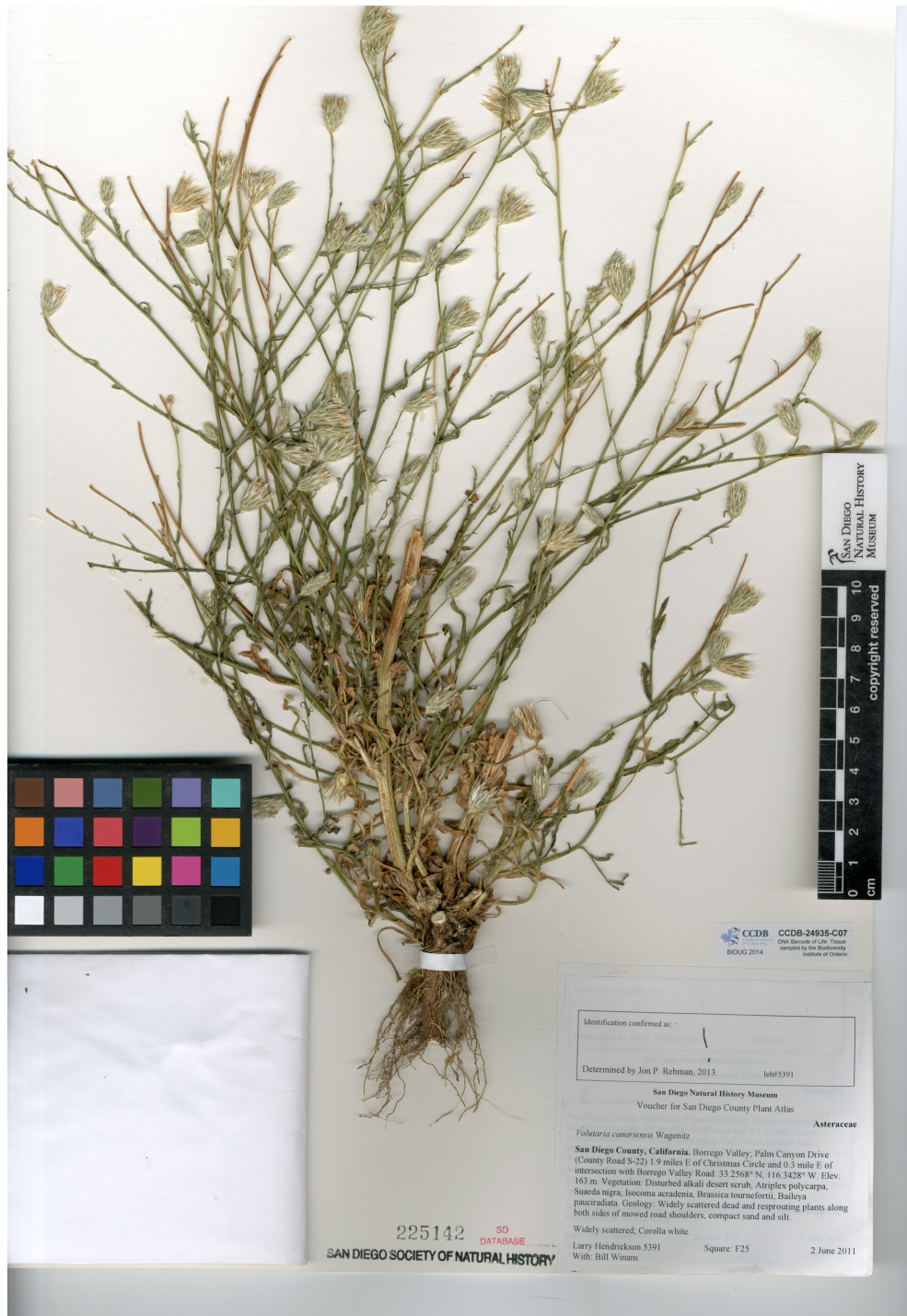


Verbena litoralis
Seashore Vervain



Verbena litoralis
Seashore Vervain

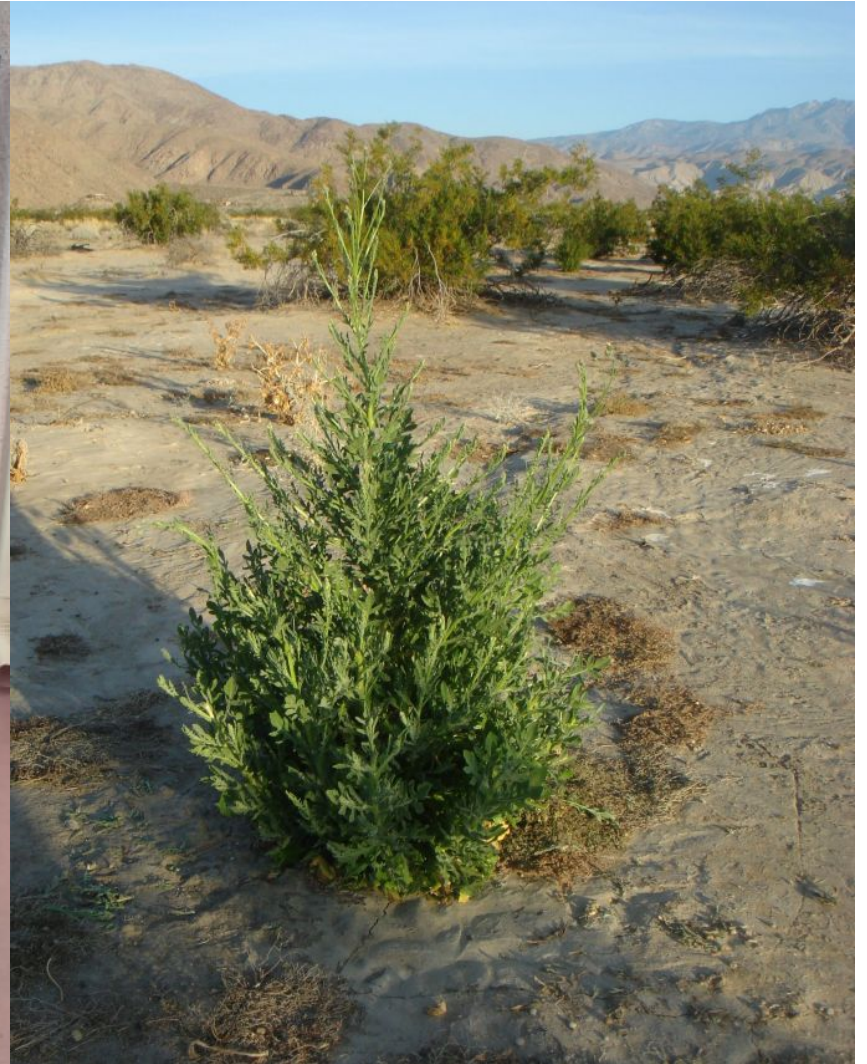




Volutaria canariensis, Canary Island Knapweed

Family: Asteraceae

- 2010 one plant in Borrego
- 2013-2014 800+ plants
- 2015 ~ 10,000 plants
- 2015 also found additional population in Upper Newport Bay, Orange County
- One plant produces 2,500 seeds
- 1-2 m tall
- Leaves pinnately or divided lobe
- Inflorescence has solitary heads or small cyme like, thinly cobwebby, flowers white
- Usually found in areas with disturbed ground or seasonally flooded areas
- Flowers April to June
- Google 'Tom Chester Volutaria' for more/better photos



Volutaria species (Knapweed)
Photo by Kate Harper
And Tom Chester

'Red Alerts' for San Diego County

Ageratina adenophora

Araujia sericifera

Arctotheca calendula

Carrichtera annua

Centaurea stobe

Lythrum salicaria

Malephora crocea/lutea

Pentameris airoides

Senecio quadridentatus

Sesbania punicea

Verbena litoralis

Volutaria tubulifora

Non-native plants, most have already been rated by Cal-ipc as 'moderate' or 'high', some have not been rated yet but are suspected to be invasive because of how they currently behave in wildlands, some have only recently been found in San Diego County while others are well known but only known from a few populations, none of them are 'widespread' in wildlands

carolynmartus@gmail.com