

County of San Diego Behavioral Health Services



COUNTY OF SAN DIEGO
HHSA
HEALTH AND HUMAN SERVICES AGENCY

LIVE WELL
SAN DIEGO

Prevention and Planning Unit

- ◇ Mental Health Services Act Coordination
- ◇ Substance Use Prevention Services
- ◇ DUI Programs
- ◇ Mental Health Prevention and Early Intervention
- ◇ Suicide Prevention
- ◇ Stigma and Discrimination Reduction

Children, Youth & Families System of Care

- ◇ Family/ Youth Advocacy
- ◇ Case Management
- ◇ Rehabilitation Support
- ◇ Outpatient & School Based Treatment
- ◇ Wraparound Services
- ◇ Pathways to Well Being
- ◇ Therapeutic Behavioral Services
- ◇ Day & Residential Treatment
- ◇ Juvenile Forensics
- ◇ Teen Recovery Centers
- ◇ Outpatient & Residential Women's Perinatal Alcohol & Drug Programs
- ◇ Emergency Screening & Stabilization

Adult/Older Adult System of Care

- ◇ Outpatient Mental Health
- ◇ Case Management
- ◇ Conservatorship Collaboration
- ◇ Crisis Residential Treatment
- ◇ Detoxification Services
- ◇ Clubhouses
- ◇ Full Service Partnerships
- ◇ Justice Services
- ◇ Residential Alcohol & Drug Programs
- ◇ Rehabilitation Recovery Centers
- ◇ Supported Housing Services
- ◇ Supported Employment
- ◇ Outpatient Alcohol & Drug Programs

Clinical Director's Office

- ◇ Integrated Care
- ◇ Long Term Care
- ◇ Whole Person Wellness
- ◇ Workforce Development

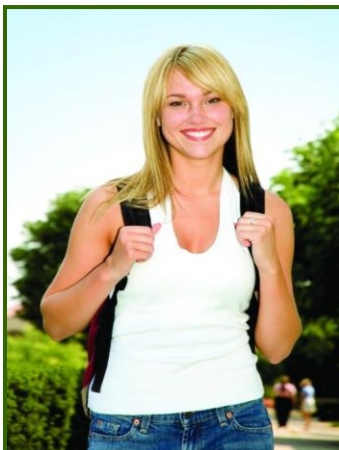
Inpatient Health Services

- ◇ Edgemoor Skilled Nursing
- ◇ San Diego County Psychiatric Hospital
- ◇ Youth Inpatient Services
- ◇ State Hospital Services



The Behavioral Health Services (BHS) Department of the County's Health and Human Services Agency provides a broad continuum of services for mental health and substance use issues.

Services are provided to groups across the lifespan—from perinatal, children, youth and families, to adults and older adults.



BHS promotes recovery, discovery, resiliency and well-being through prevention, treatment and intervention, as well as integrated services for clients experiencing co-occurring mental illness and substance use issues.

BHS embraces Live Well San Diego, the County's vision to promote healthy, safe and thriving communities countywide.

For more information, see:

www.sdcounty.ca.gov/hhsa/programs/bhs/



A Multitude of Resources Available:

Access & Crisis Line

A 24/7 information and referral line will help you find a provider for your needs.

1-888-724-7240

You can also

Call 2-1-1

for emergency food, shelter, healthcare and more.

Network of Care Website

To locate mental health/addiction care providers and services, view the community calendar, searchable library, career opportunities, and more.

<http://sandiego.networkofcare.org/mh/>

(Available in multiple languages.)

It's Up 2 Us Website

For Suicide Prevention and Stigma Reduction, go to: Up2sd.org.



Up2SD.org