

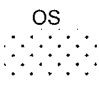

ORDINANCE NO. 10248 (NEW SERIES)

AN ORDINANCE CHANGING THE ZONING CLASSIFICATION
OF CERTAIN PROPERTY IN THE RAMONA COMMUNITY PLAN AREA,
REZ: R07-002

The Board of Supervisors of the County of San Diego ordains as follows:

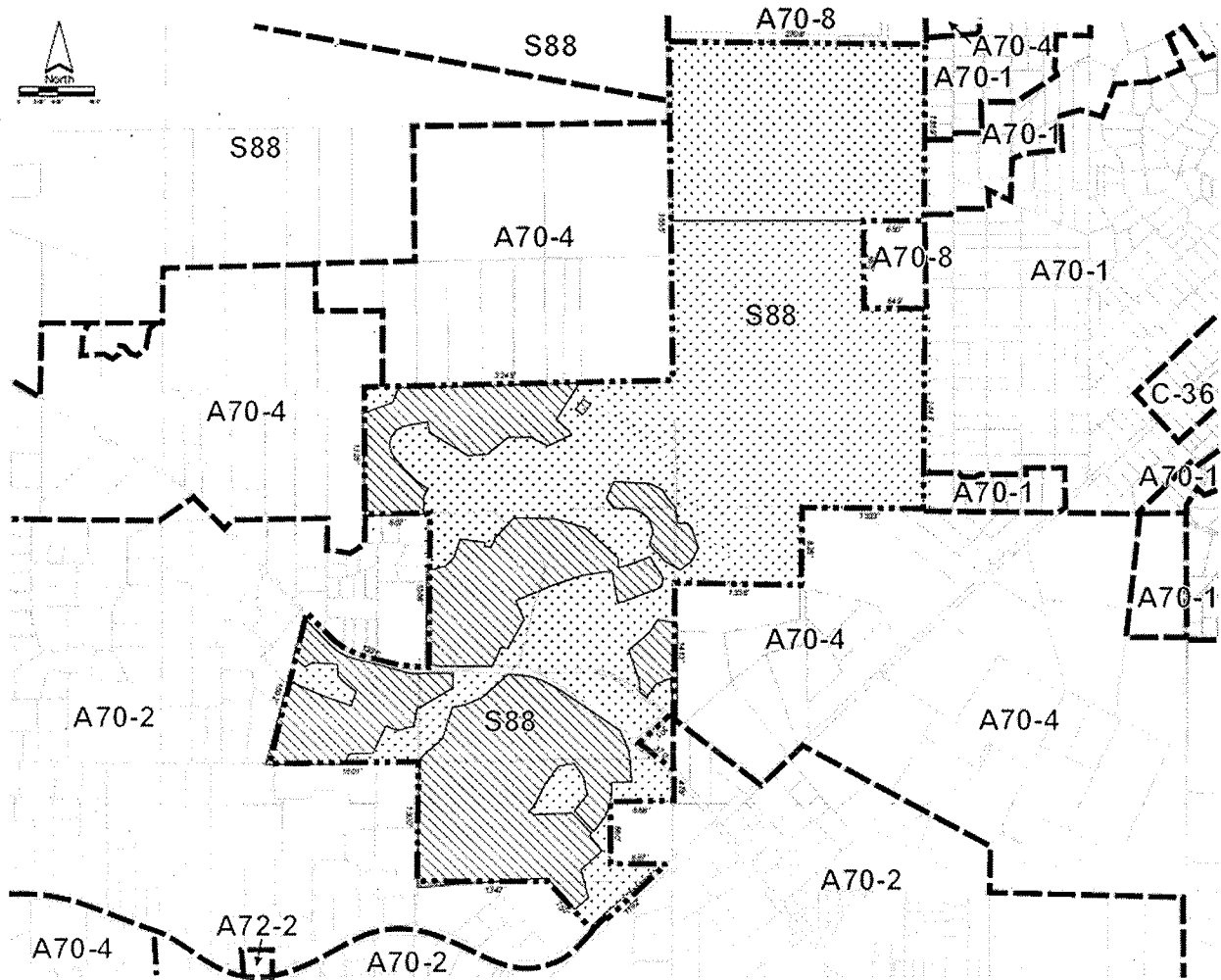
Section 1. The zoning classification of certain real property is hereby changed as set forth herein, and more precisely delineated on the Rezone plat, as illustrated on Exhibit A of this ordinance. All documents are on file with the Clerk of the Board of Supervisors of the County of San Diego.

Section 2. The zoning classification of the real property identified on the Rezone plat is hereby changed as follows:

AREA	STATUS	ZONING												
		USE REG	ANIMAL REG	DEVELOPMENT REGULATIONS										SPEC AREA REG
				DEN-SITY	LOT SIZE	BLDG TYPE	MAX FLOOR AREA	FLOOR AREA RATIO	HT	LOT COVER	SET-BACK	OPEN SPACE		
OS 	OLD	S88	L	0.25	2	C	-	-	G	-	V	-	C, POR F	
	NEW	S88	-	-	-	A	-	-	-	-	-	-	C, POR F	
RR 	OLD	S88	L	0.25	2	C	-	-	G	-	V	-	C, POR F	
	NEW	S88	L	0.66	1	C	-	-	G	-	H	-	B, C	

Section 3. Effective Date. This Ordinance shall take effect and be in force thirty (30) days after the date of its passage, and before the expiration of fifteen (15) days after its passage, a summary shall be published once with the names of the members voting for and against the same in the San Diego Daily Transcript, a newspaper of general circulation published in the County of San Diego.

EXHIBIT A



Existing Zoning

USE REGULATIONS	S-88	
NEIGHBORHOOD REGULATIONS	L	
DEVELOPMENT REGULATIONS	DENSITY	0.25
	LOT SIZE	≥ AC
	BUILDING TYPE	C
	MAX. FLOOR AREA	--
	FLOOR AREA RATIO	--
	HEIGHT	G
	LOT COVERAGE	--
	SETBACK	V
	OPEN SPACE	--
	SPECIAL AREA REGULATIONS	C, POR, F

Proposed Open Space

457.8 acres
Includes both OS-1 and OS-2

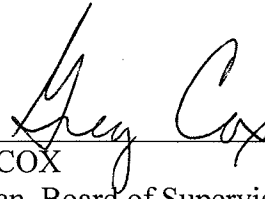
USE REGULATIONS	S-88	
NEIGHBORHOOD REGULATIONS	--	
DEVELOPMENT REGULATIONS	DENSITY	--
	LOT SIZE	--
	BUILDING TYPE	A
	MAX. FLOOR AREA	--
	FLOOR AREA RATIO	--
	HEIGHT	--
	LOT COVERAGE	--
	SETBACK	--
	OPEN SPACE	--
	SPECIAL AREA REGULATIONS	C, POR, F

Proposed Residential

215.0 acres
Maximum of 125 residential lots

USE REGULATIONS	S-88	
NEIGHBORHOOD REGULATIONS	L	
DEVELOPMENT REGULATIONS	DENSITY	0.66
	LOT SIZE	1 AC
	BUILDING TYPE	C
	MAX. FLOOR AREA	--
	FLOOR AREA RATIO	--
	HEIGHT	G
	LOT COVERAGE	--
	SETBACK	H
OPEN SPACE	--	
SPECIAL AREA REGULATIONS	B, C	

PASSED, APPROVED, AND ADOPTED by the Board of Supervisors of the County of San Diego this 30th day of January, 2013.



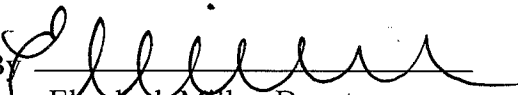
GREG COX
Chairman, Board of Supervisors
County of San Diego, State of California

The above Ordinance was adopted by the following vote:

AYES: Cox, Jacob, D. Roberts, R. Roberts, Horn

ATTEST my hand and the seal of the Board of Supervisors this 30th day of January, 2013.

THOMAS J. PASTUSZKA
Clerk of the Board of Supervisors

By 
Elizabeth Miller, Deputy



No. 10248(N.S.)

01-30-2013 (1)