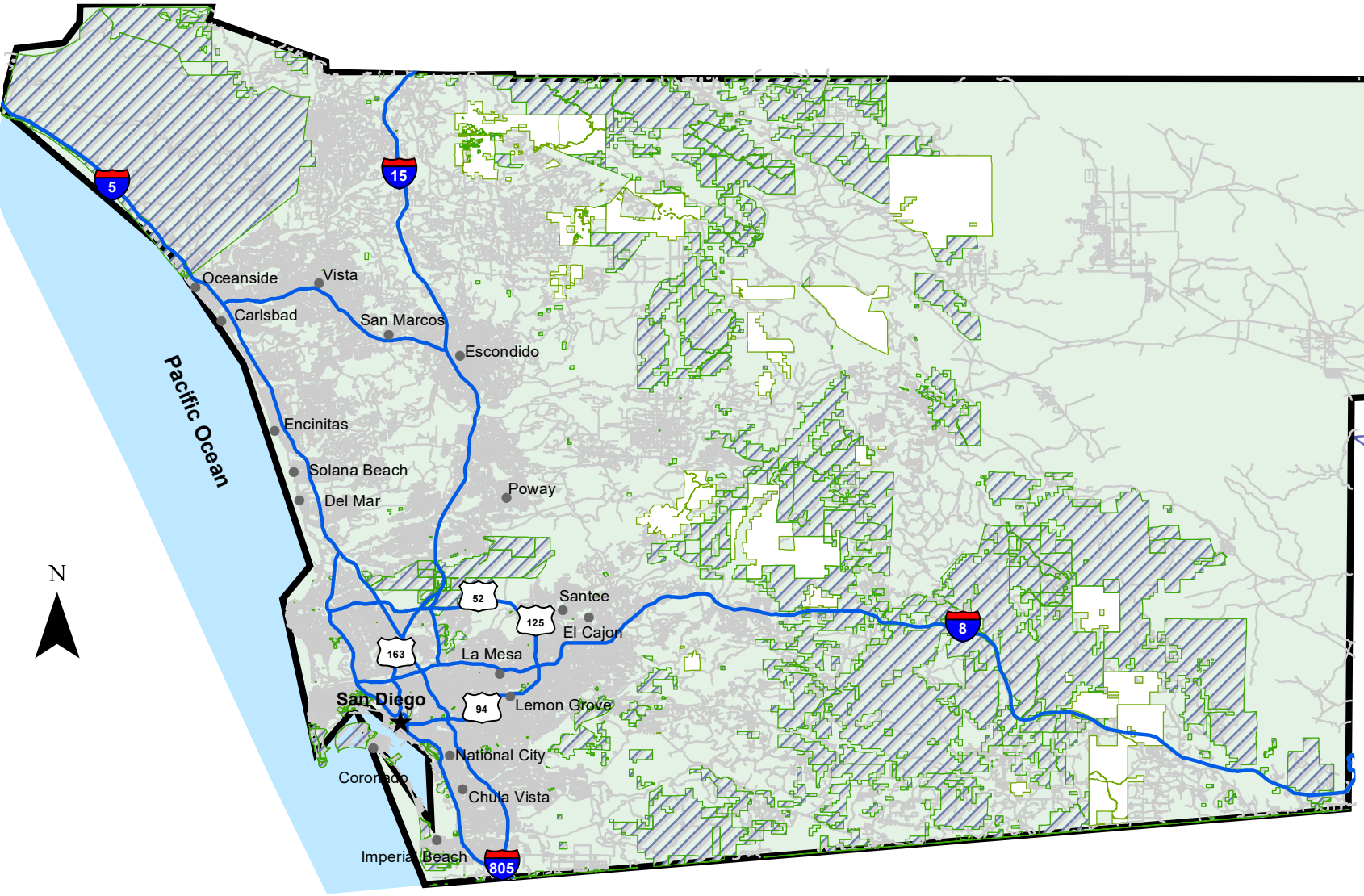


FILED THIS \_\_\_\_\_ DAY OF \_\_\_\_\_, 2026 AT THE HOUR OF \_\_\_\_\_ O'CLOCK \_\_\_\_\_ M. IN THE OFFICE OF THE COUNTY AUDITOR OF THE COUNTY OF SAN DIEGO, STATE OF CALIFORNIA, AT THE REQUEST OF THE BOARD OF SUPERVISORS OF THE SAN DIEGO COUNTY VECTOR CONTROL PROGRAM.

\_\_\_\_\_  
 COUNTY AUDITOR, COUNTY OF SAN DIEGO

I CERTIFY THAT THIS ASSESSMENT DIAGRAM WAS PREPARED BY ME, AS PART OF THE VECTOR CONTROL PROGRAM MOSQUITO, VECTOR AND DISEASE CONTROL ASSESSMENT ENGINEER'S REPORT I PREPARED FOR THE COUNTY OF SAN DIEGO FOR FY 2026-27.

*John Bliss*  
 \_\_\_\_\_  
 JOHN BLISS, ENGINEER



**Legend**

- Incorporated Cities
- ★ City of San Diego
- Freeways
- ▨ Federally Owned Lands
- ▨ American Indian Reservations
- ▭ San Diego County Vector Control Program Assessment Boundary

Note:  
 REFERENCE IS HEREBY MADE TO THE MAPS AND DEEDS OF RECORD IN THE OFFICE OF THE ASSESSOR OF THE COUNTY OF SAN DIEGO FOR A DETAILED DESCRIPTION OF THE LINES AND DIMENSIONS OF ANY PARCEL SHOWN HEREIN. THOSE MAPS SHALL GOVERN FOR ALL DETAILS CONCERNING THE LINES AND DIMENSIONS OF SUCH PARCELS. EACH PARCEL IS IDENTIFIED IN SAID MAPS BY ITS DISTINCTIVE ASSESSOR'S PARCEL NUMBER.

**COUNTY OF SAN DIEGO  
 DEPARTMENT OF ENVIRONMENTAL HEALTH VECTOR CONTROL PROGRAM  
 MOSQUITO, VECTOR AND DISEASE CONTROL ASSESSMENT**