



# County of San Diego

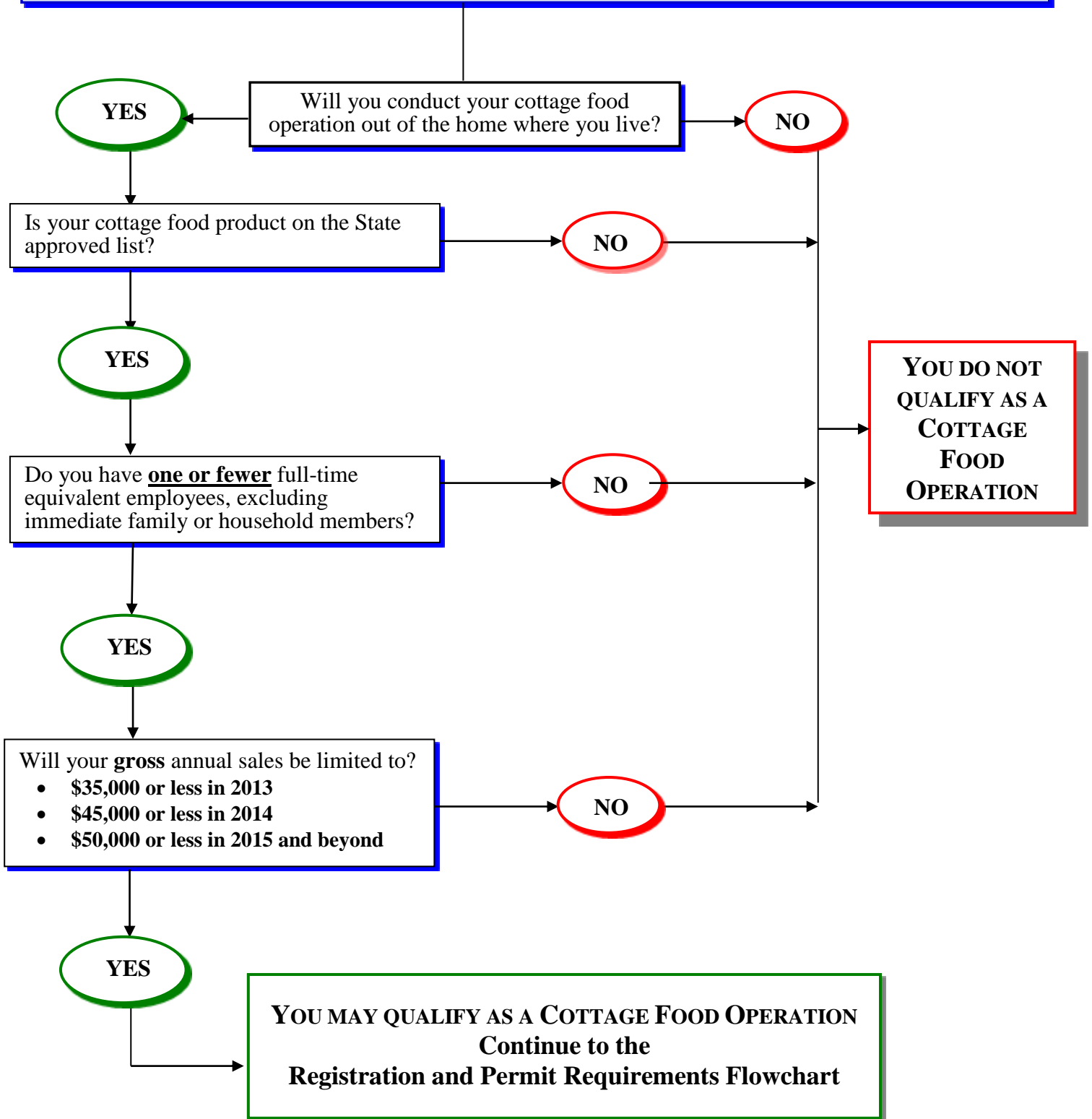
## DEPARTMENT OF ENVIRONMENTAL HEALTH FOOD AND HOUSING DIVISION

P.O. BOX 129261, SAN DIEGO, CA 92112-9261  
Phone: (858) 505-6900 ♦ FAX: (858) 505-6998

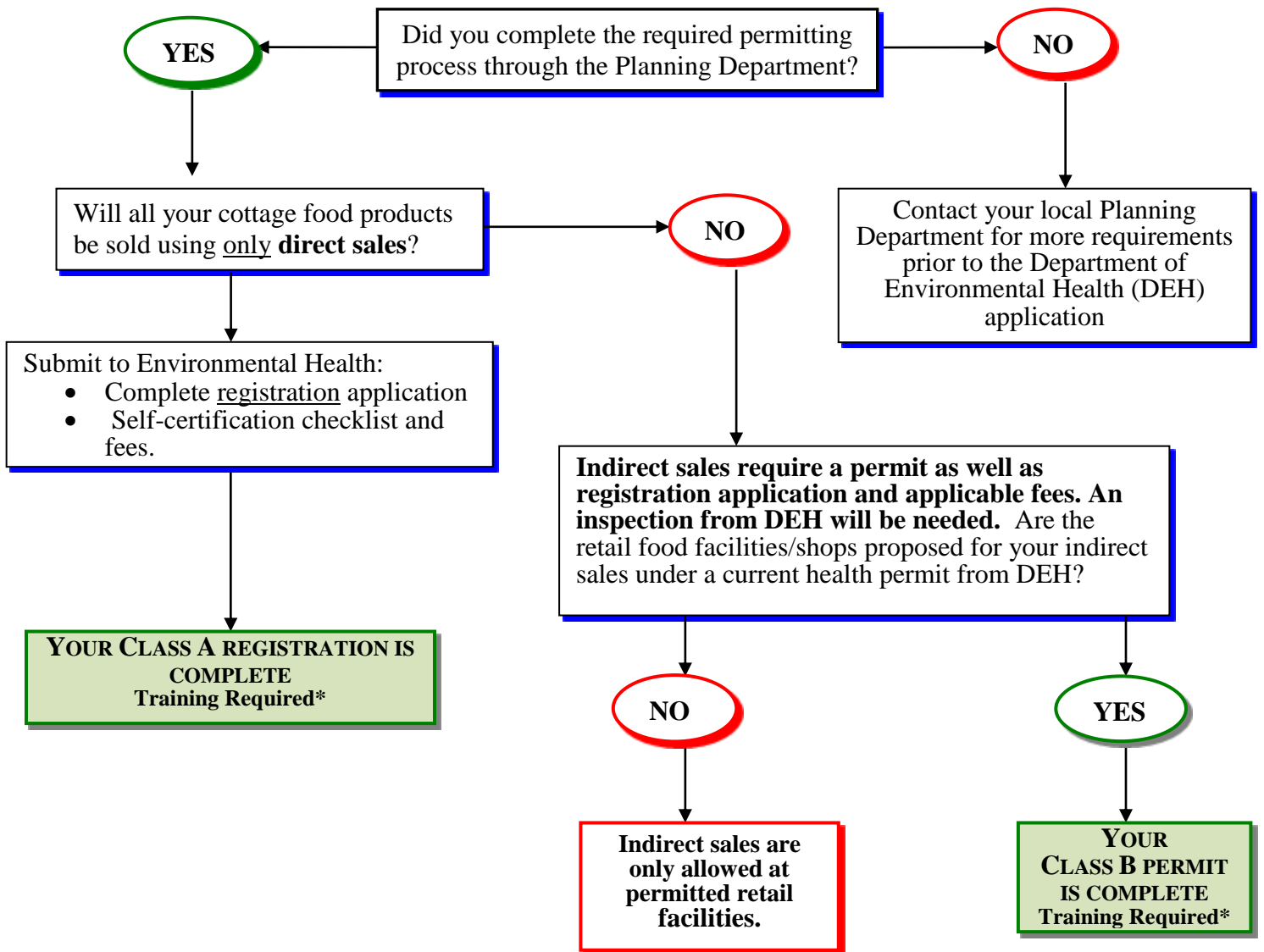
[www.sdcdeh.org](http://www.sdcdeh.org)



### DO YOU QUALIFY AS A COTTAGE FOOD OPERATION?



# REGISTRATION AND PERMIT REQUIREMENTS



### \*TRAINING REQUIRED

Within 3 months of obtaining permit or registration, **all Cottage Food Operators** must attend a Food Processor Course as instructed by the California Department of Public Health (CDPH). Failure to complete training may result in inactivation of your Cottage Food Registration or Permit. Visit the CDPH Cottage Food website at <http://www.cdph.ca.gov/programs/Pages/fdbCottageFood.aspx>

NOTE: Only one full-time equivalent employee, excluding immediate family or household members, is allowable.

NOTE: If selling the cottage food products by weight, Contact the County Agriculture, Weights and Measures Department.