



# County of San Diego

## DEPARTMENT OF ENVIRONMENTAL HEALTH FOOD AND HOUSING DIVISION

P.O. BOX 129261, SAN DIEGO, CA 92112-9261  
Phone: (858) 505-6900 | (800) 253-9933 | Fax: (858) 505-6998 | [www.sdcdelh.org](http://www.sdcdelh.org)



# Limited Service Charitable Feeding Operations Registration Guide

Effective January 1, 2019, the California Retail Food Code is amended to include Limited Service Charitable Feeding Operations (LSCFO). A LSCFO is not a food facility but is required to register with the Department of Environmental Health (DEH). Food preparation beyond what is permissible for a LSCFO will require a health permit for a retail food facility.

## What is a Limited Service Charitable Feeding Operation?

A LSCFO is a non-profit organization that provides food to a consumer solely for the purpose of providing charity. These operations typically consist of food pantries and faith based organizations.

## Registration Requirements for Limited Service Charitable Feeding Operations

LSCFO that store and distribute only 100% pre-packaged non-perishable foods are **exempted** from registration requirements. **Category 1**

LSCFO that store and distribute only 100% pre-packaged foods that are either non-perishable and/or perishable are **not** required to register with DEH if the operation is a partner agency of a permitted Food Bank.

LSCFO that store and distribute only 100% pre-packaged foods that are either non-perishable and/or perishable and are not a partner agency with a Food Bank **are** required to register with DEH. **Category 2**

LSCFO that handle unpackaged foods limited to the following: heating, portioning, assembly of a small volume of commercially prepared foods/ingredients, or re-heating and/or portioning of commercially prepared foods with no further processing to hot-hold for same day service **are** required to register with DEH. **Categories 3 4**

Charitable organizations that conduct full food preparation do not qualify for registration as a LSCFO and must obtain a health permit for a food facility.

## How to Register with DEH

A representative of a LSCFO may register in person during the hours of 8:00 am - 4:30 pm Monday - Friday at the Department of Environmental Health headquarters located at:

**5500 Overland Ave, Suite 170, San Diego, CA 92123.**

Proof of a current non-profit charitable organization status must be provided at the time of application submittal. The application can be found at: <https://www.sandiegocounty.gov/content/dam/sdc/deh/fhd/food/lscfo/registration.pdf>

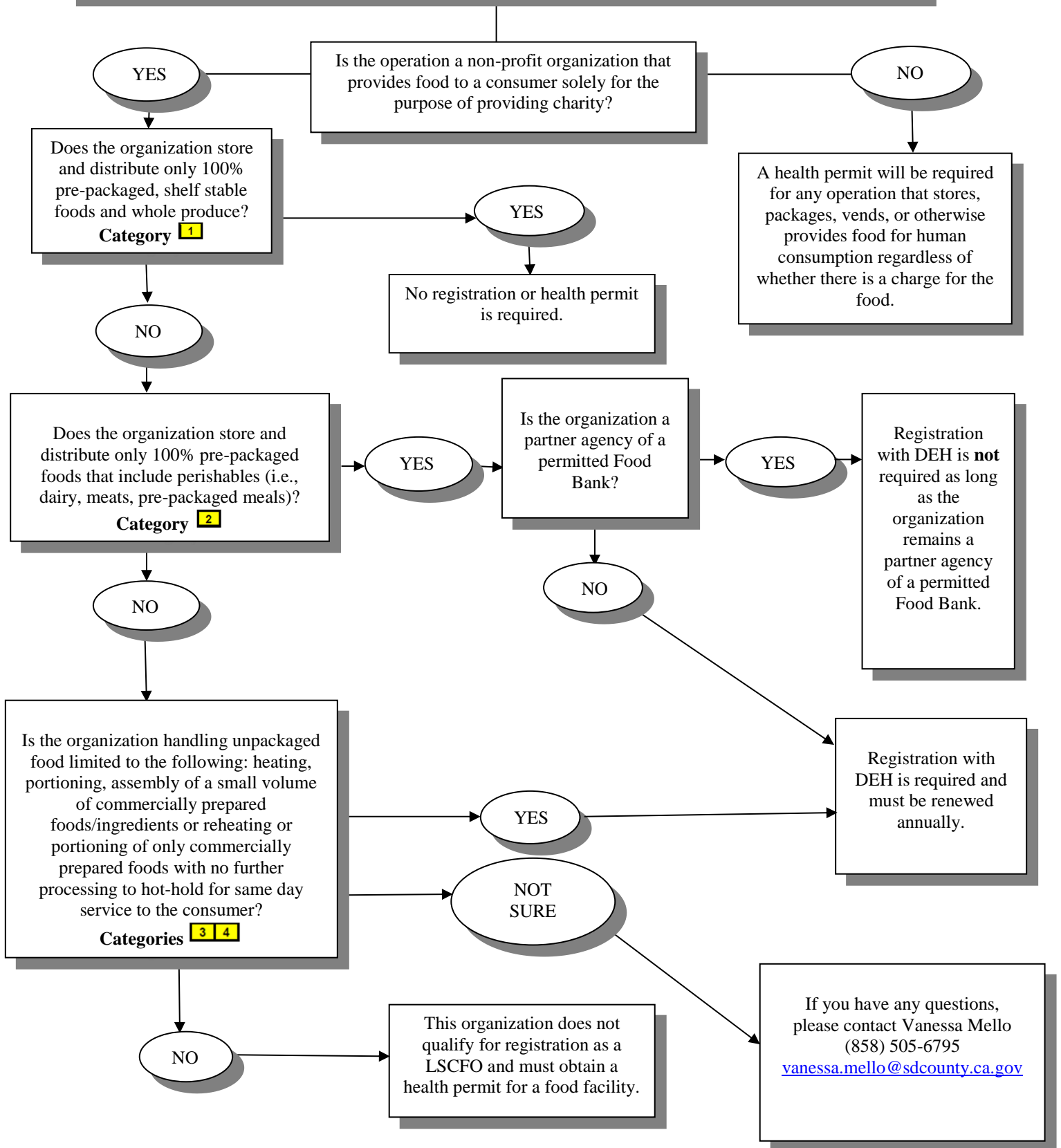
**Any questions, please contact us at (858) 505-6803 or [DEHFoodSafety@sdcounty.ca.gov](mailto:DEHFoodSafety@sdcounty.ca.gov).**

For more information, please visit: <https://www.sandiegocounty.gov/content/sdc/deh/fhd/food/charitablefeedings.html>

### LSCFO Category Legend:

- 1 = Storage and distribution of whole, uncut produce or pre-packaged, non PHFs in their original manufacturer's packaging (grocery only, no perishable foods)
- 2 = Storage or distribution of commercially prepared and commercially packaged potentially hazardous cold or frozen foods (grocery only, including perishable foods)
- 3 = Reheat or portion commercially prepared foods with no further processing
- 4 = Heat, portion, or assemble a small volume of commercially prepared foods or ingredients that are not prepackaged

# Limited Service Charitable Feeding Operations (LSCFO)



**LSCFO Category Legend:**

- 1 = Storage and distribution of whole, uncut produce or pre-packaged, non PHFs in their original manufacturer's packaging (grocery only, no perishable foods)
- 2 = Storage or distribution of commercially prepared and commercially packaged potentially hazardous cold or frozen foods (grocery only, including perishable foods)
- 3 = Reheat or portion commercially prepared foods with no further processing
- 4 = Heat, portion, or assemble a small volume of commercially prepared foods or ingredients that are not prepackaged

If you have any questions, please contact Vanessa Mello (858) 505-6795 [vanessa.mello@sdcounty.ca.gov](mailto:vanessa.mello@sdcounty.ca.gov)