

San Diego Water Board Update 2016 SAM Fall Forum



Susan Pease
Environmental Scientist

News You Can Use

- Who's who
- SB445 funding
- Low-Threat Closure Policy
- Inert soil waiver
- Vapor intrusion
- Social responsibility
- Climate change
- GeoTracker updates



The Usual Suspects (Who's Who)

Groundwater Protection Branch
Chief: Julie Chan

Northern Cleanup
(DOD)

Supervisor:
Kelly Dorsey

Sue Pease

Beatrice Griffey

Sophie diCampalto

Chehreh Komeylyan

Central Cleanup
(USTs)

Supervisor:
Craig Carlisle

Charles Cheng

Sean McClain

Lalitha Thotakura

Southern
Cleanup (SCP)

Supervisor:
John Anderson

Brian McDaniel

Tom Alo

Sarah Mearon

Wayne Chiu

Land Discharge
(Landfills, WDRs)

Supervisor:
John Odermatt

Amy Grove

Fisayo Osibodu

Roger Mitchell

Alexander Cali

<http://www.waterboards.ca.gov/sandiego/>

SB445 Funding

http://www.waterboards.ca.gov/water_issues/programs/ustcf/sb445

- Pre-apps accepted/reviewed continuously
- First round of funding imminent

Eligible Projects

Require remediation of surface or GW contam.

Agency directive in place (unless infeasible)

RP with limited financial resources

Human-made contaminants

Priorities

Disadvantaged or small community impacted

Significant threat to HH or environment

Lack of alternate funding

Cost and environ. benefits

Low-Threat Closure Policy

DOs

- Use the current LTCP checklist!
- Use default parameters for soil-vapor modeling
- Upload all docs/letters to GeoTracker
- Include RPs in correspondence
- RP due diligence:
Discuss case options for funding eligibility with Cleanup Fund

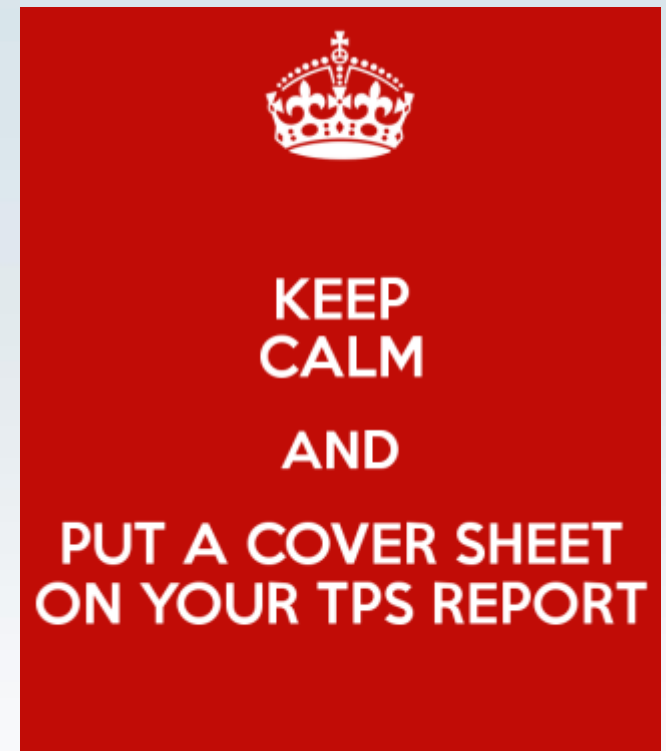
DON'Ts

- Submit work plans for DEH-transferred cases prior to discussing with the PM
- Ignore deadlines
- Make assumptions:
Interpretation of the policy can be challenging, so discuss with the PM (e.g., “reasonable time frame,” “to the extent practicable”)

Low-Threat Closure Policy

Project Execution Plan (PEP)

- All projects funded by Cleanup Fund
- Plan for site closure
- Advantages:
 - ↳ Project costs
 - ↳ Unnecessary tasks
 - ↳ Project completion time
 - ↳ Time to assign budget



Inert Soil Waiver

- Order No. R9-2014-0041: Conditional Waiver of Waste Discharge Requirements for Low Threat Discharges in the San Diego Region
- Waiver #10: Reuse or Stockpiling of soil from contaminated sites
- Reused soils must meet Tier 1 or Tier 2 Thresholds
 - Tier 1 – Unrestricted use in the San Diego Region
 - Tier 2 – Limited to Industrial and Commercial Sites in the Region
- Stockpiled soil
 - Must apply within 30 days of creation
 - Must be removed within 6 months or 180 days
- Both require the submittal of a notice of intent
- Order is subject to review and renewal in June 2019
 - **Fisayo Osibodu**, Olufisayo.Osibodu@waterboards.ca.gov (619) 521-8036
 - **John Odermatt**, John.Odermatt@waterboards.ca.gov (619) 521-5906

http://www.waterboards.ca.gov/sandiego/board_decisions/adopted_orders/2014/R9-2014-0041.pdf

Vapor Intrusion

- EPA R9 Interim TCE Indoor Air Response Action Levels (2014)

Exposure Scenario	Accelerated	Urgent
Residential	2 $\mu\text{g}/\text{m}^3$	6 $\mu\text{g}/\text{m}^3$
Comm./Ind. (8-hr)	8 $\mu\text{g}/\text{m}^3$	24 $\mu\text{g}/\text{m}^3$

- Resources:
 - DTSC VI Guidance (2011)
 - DTSC Active SG Guidance (2015)
 - DTSC HERO HHRA Notes (various)
 - Region 2 ESLs update (2016)

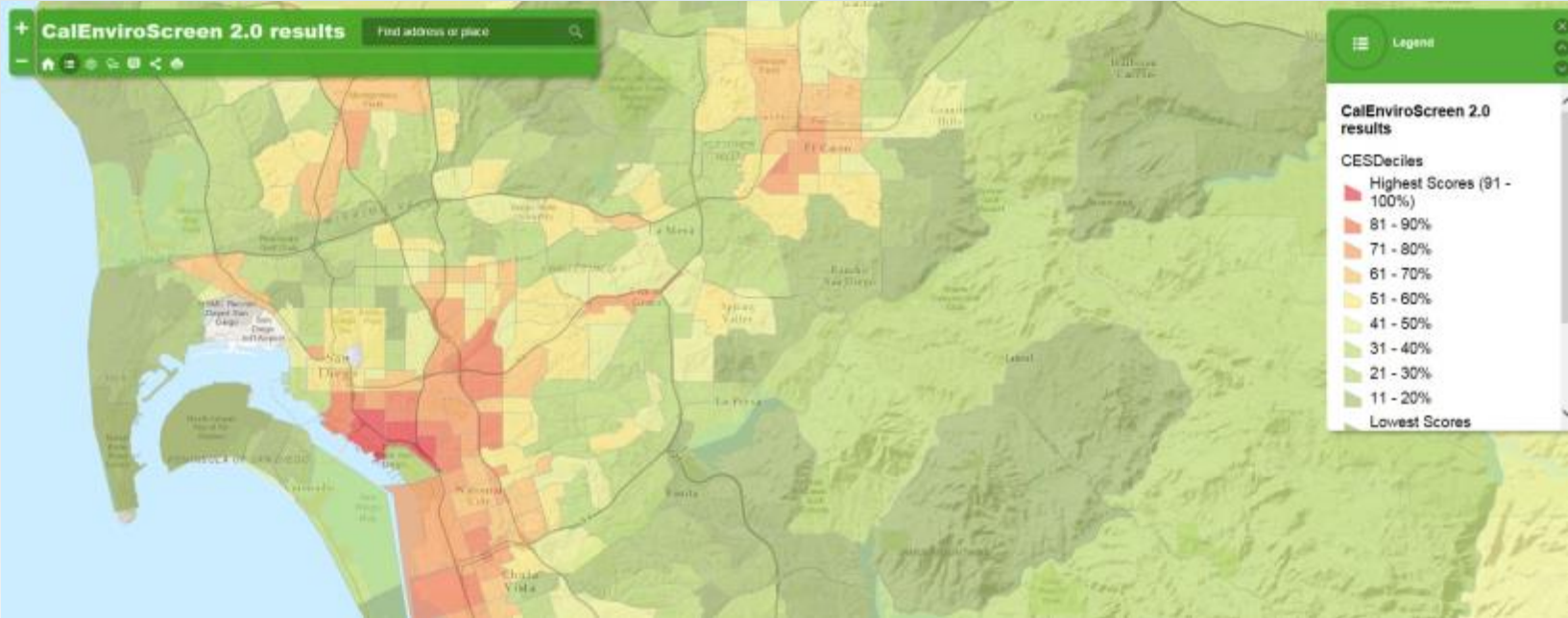


Social Responsibility

- CalEnviroScreen developed by OEHHA
- Ranks communities based on:
 - Potential pollutant exposure
 - Adverse environmental conditions
 - Socioeconomic factors
 - Prevalence of certain health conditions
- Used by Water Board to prioritize work



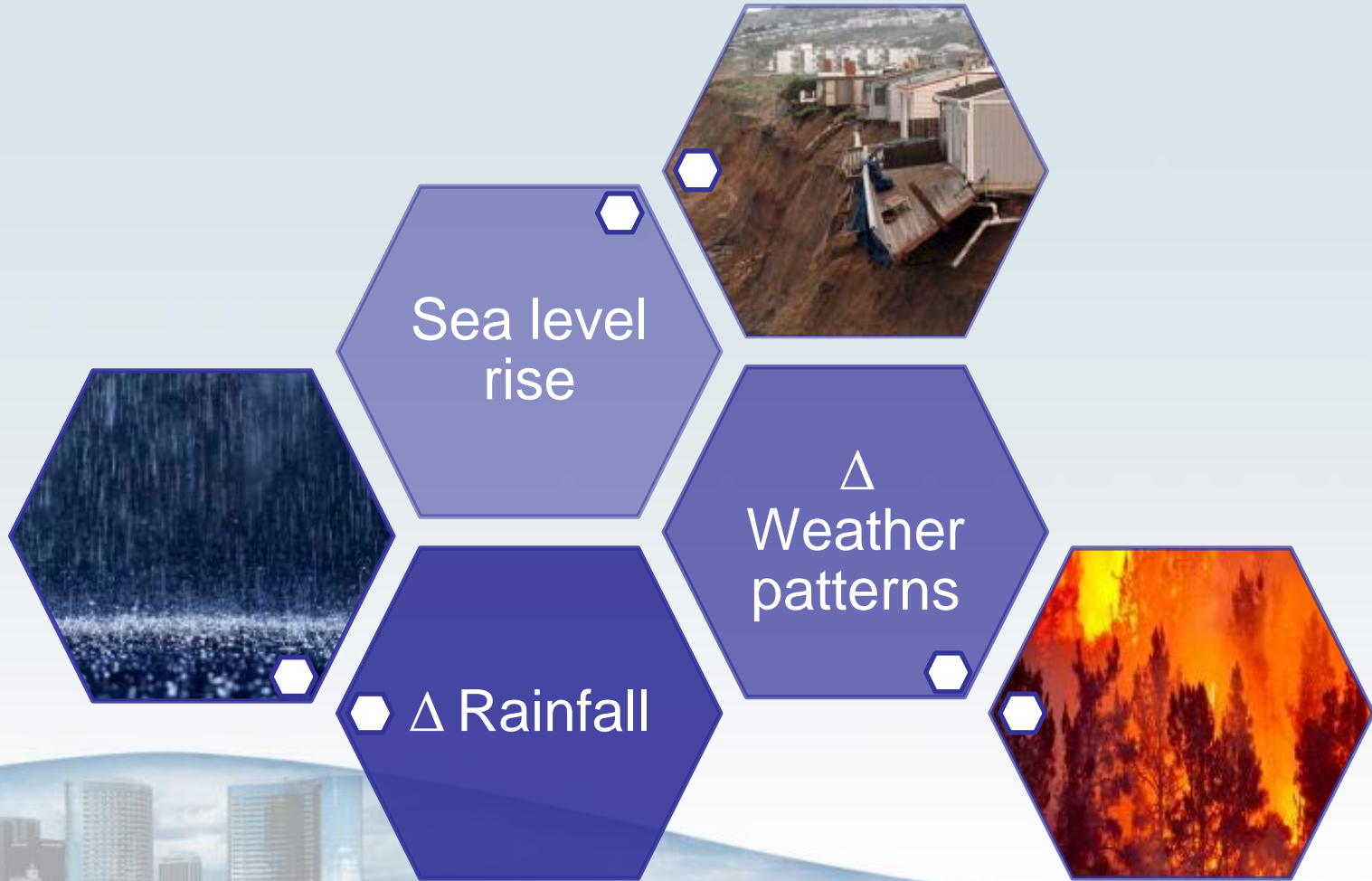
Social Responsibility



<http://oehha.ca.gov/calenviroscreen>



Climate Change



Climate Change

State Water Board website:



California Climate Strategy

An Integrated Plan for Addressing Climate Change

Vision
Reducing Greenhouse Gas Emissions to 40% Below 1990 levels by 2030

Goals
Governor's Key Climate Change Strategies

-  Increase Renewable Electricity Production to 50%
-  Reduce Petroleum Use by 50% in Vehicles
-  Double Energy Efficiency Savings at Existing Buildings
-  Reduce GHG Emissions from Natural and Working Lands
-  Reduce Short-Lived Climate Pollutants
-  Safeguard California

The infographic features a vertical green bar on the left containing a white silhouette of the California State Capitol building and a lightbulb. The background of the infographic is light green with a white border. The text is in a clean, sans-serif font.

Climate Change

- EPA: <https://www.epa.gov/remedytech/green-remediation-incorporating-sustainable-environmental-practices-remediation>
- State: <http://climatechange.ca.gov/>
- SD Water Board:
http://www.waterboards.ca.gov/sandiego/water_issues/programs/climatechange/principles.shtml



GeoTracker Updates

- New menu bar
- Geotracker Map has been updated
- Agencies added
- Public page redesigned
- Project Search & Quick Search updated
- Several “Take a Tour” features
- Other program specific features



Questions?

