

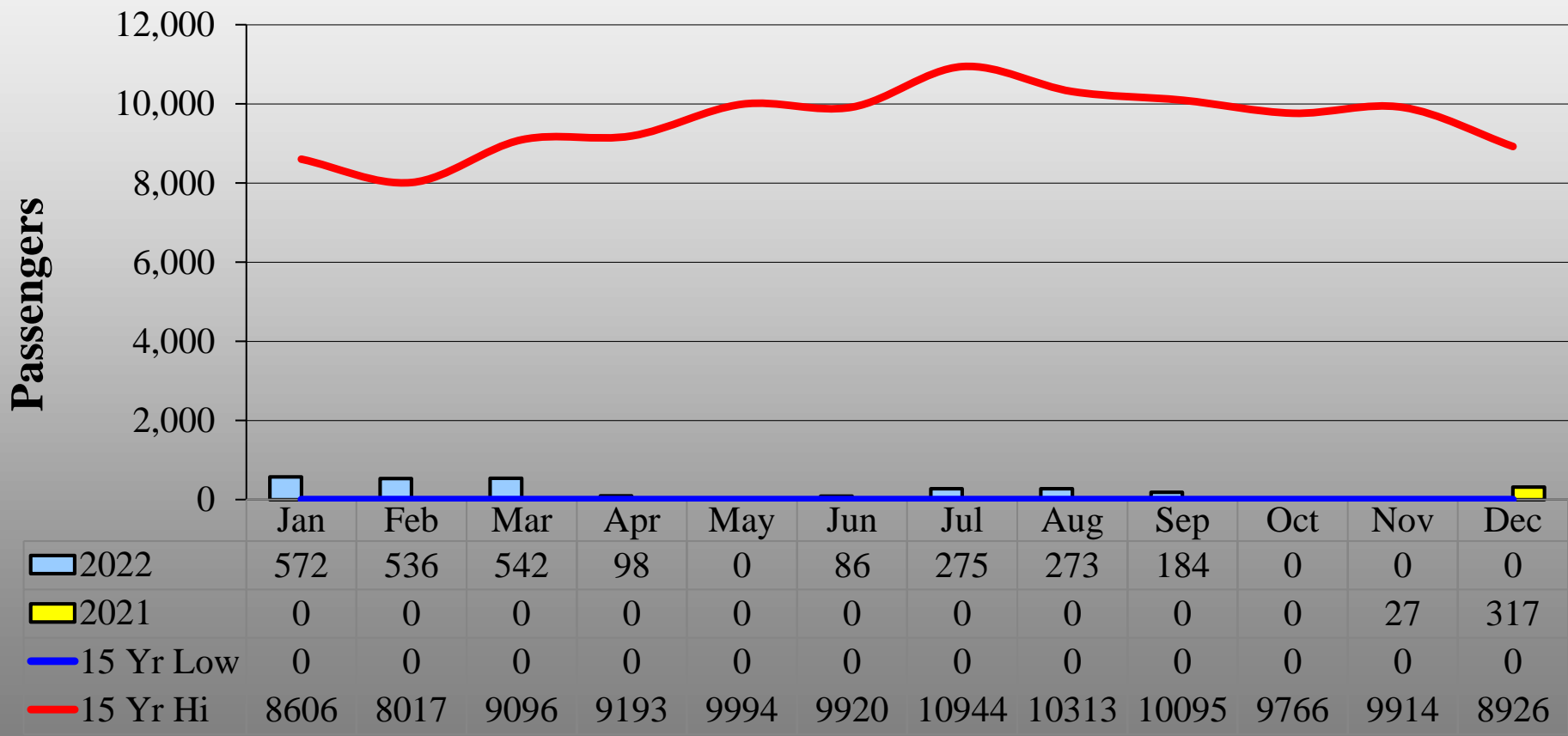
McClellan-Palomar Airport Monthly Airport Performance Report



October 2022



Monthly Enplanements

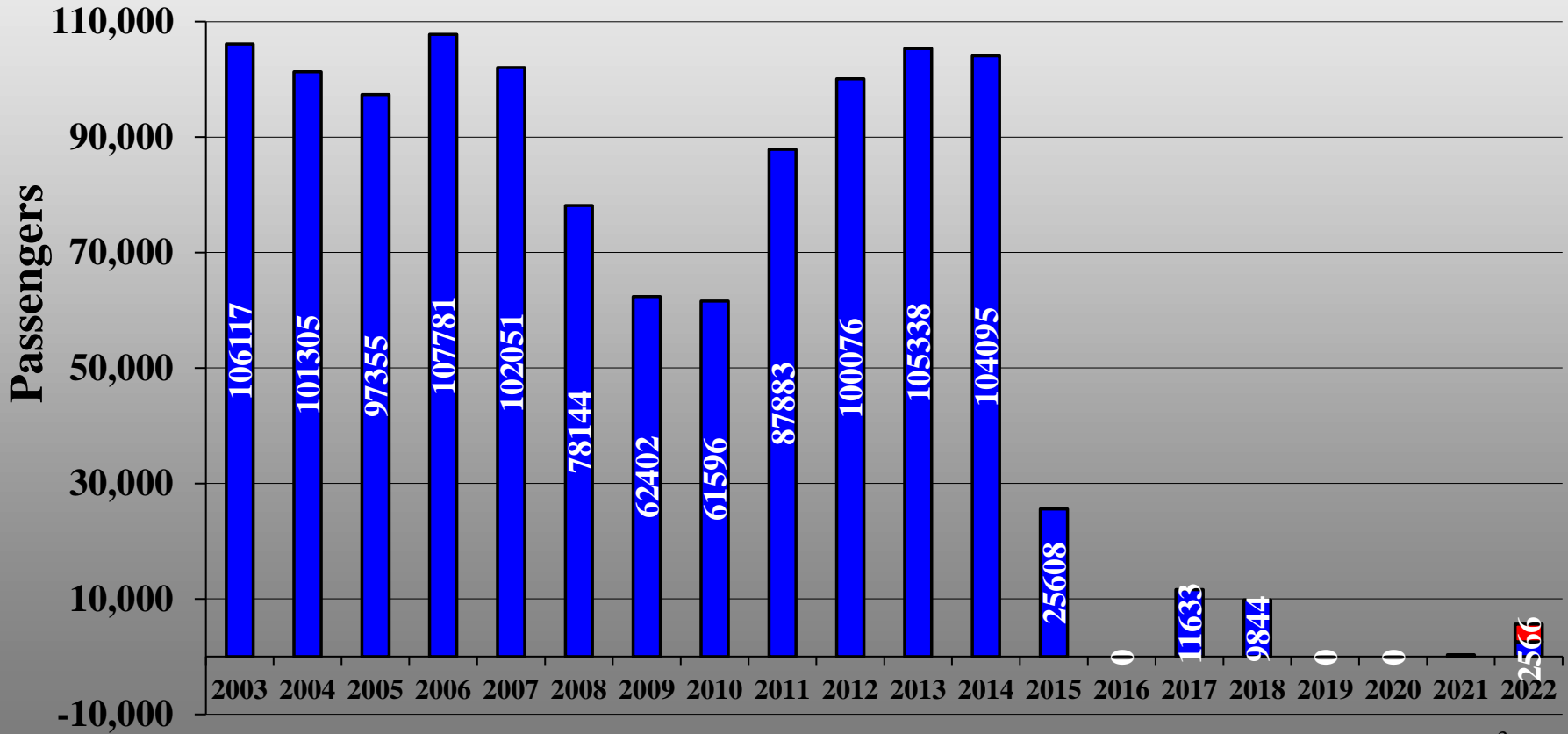


■ 2022
 ■ 2021
 — 15 Yr Low
 — 15 Yr Hi



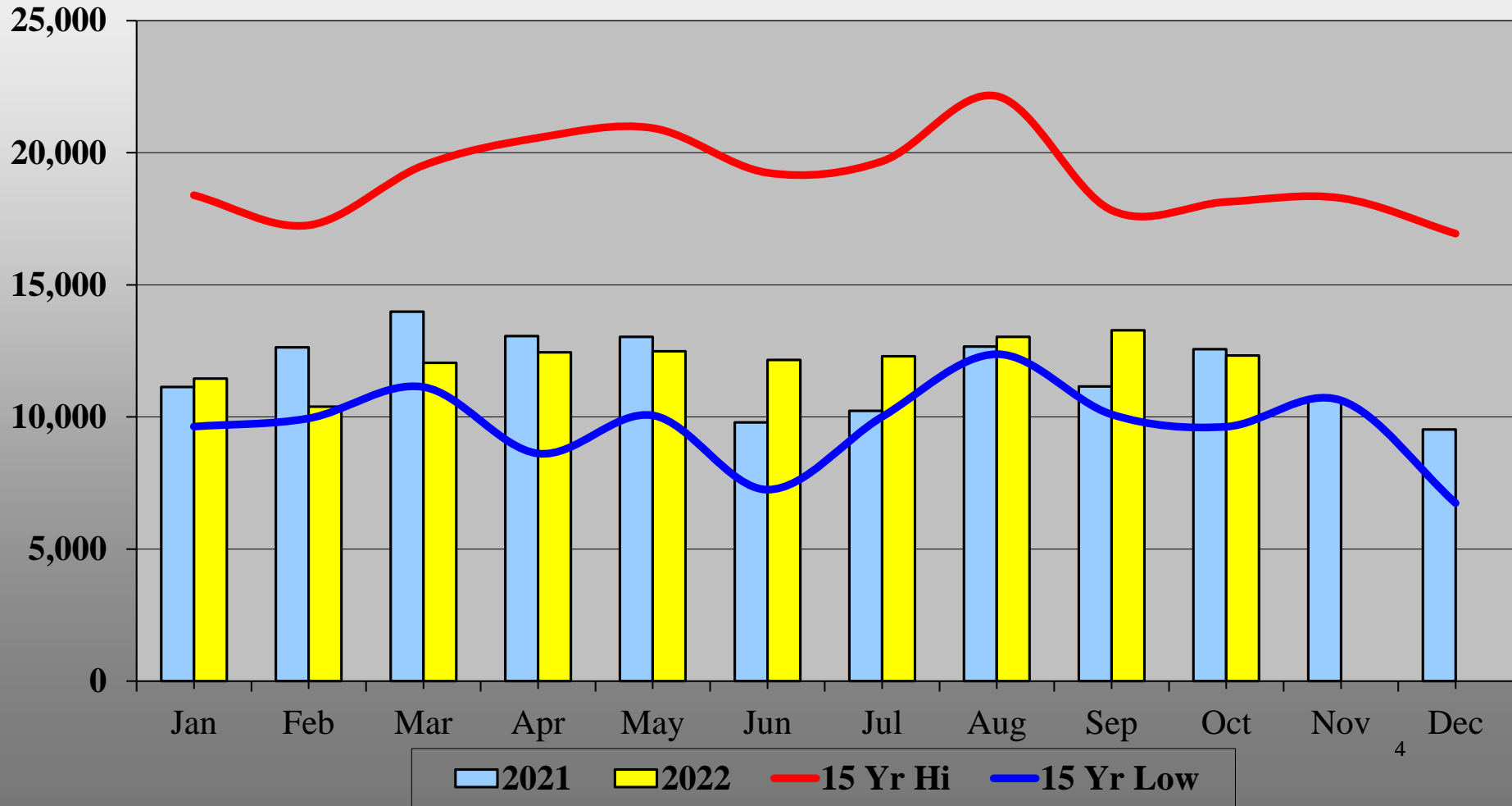
Annual Enplanements

■ Actual ■ Projected





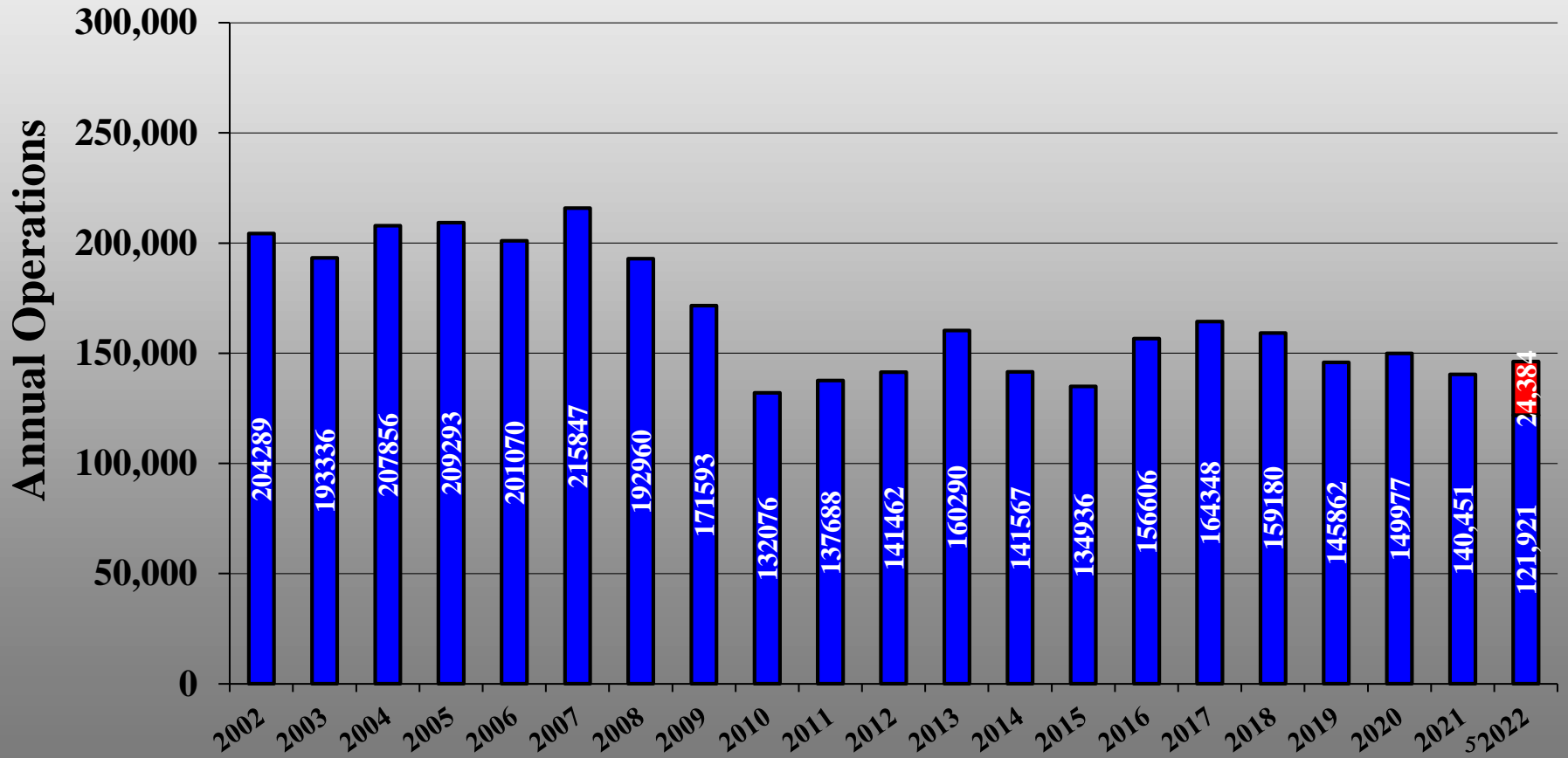
Monthly Take-Off & Landing Count





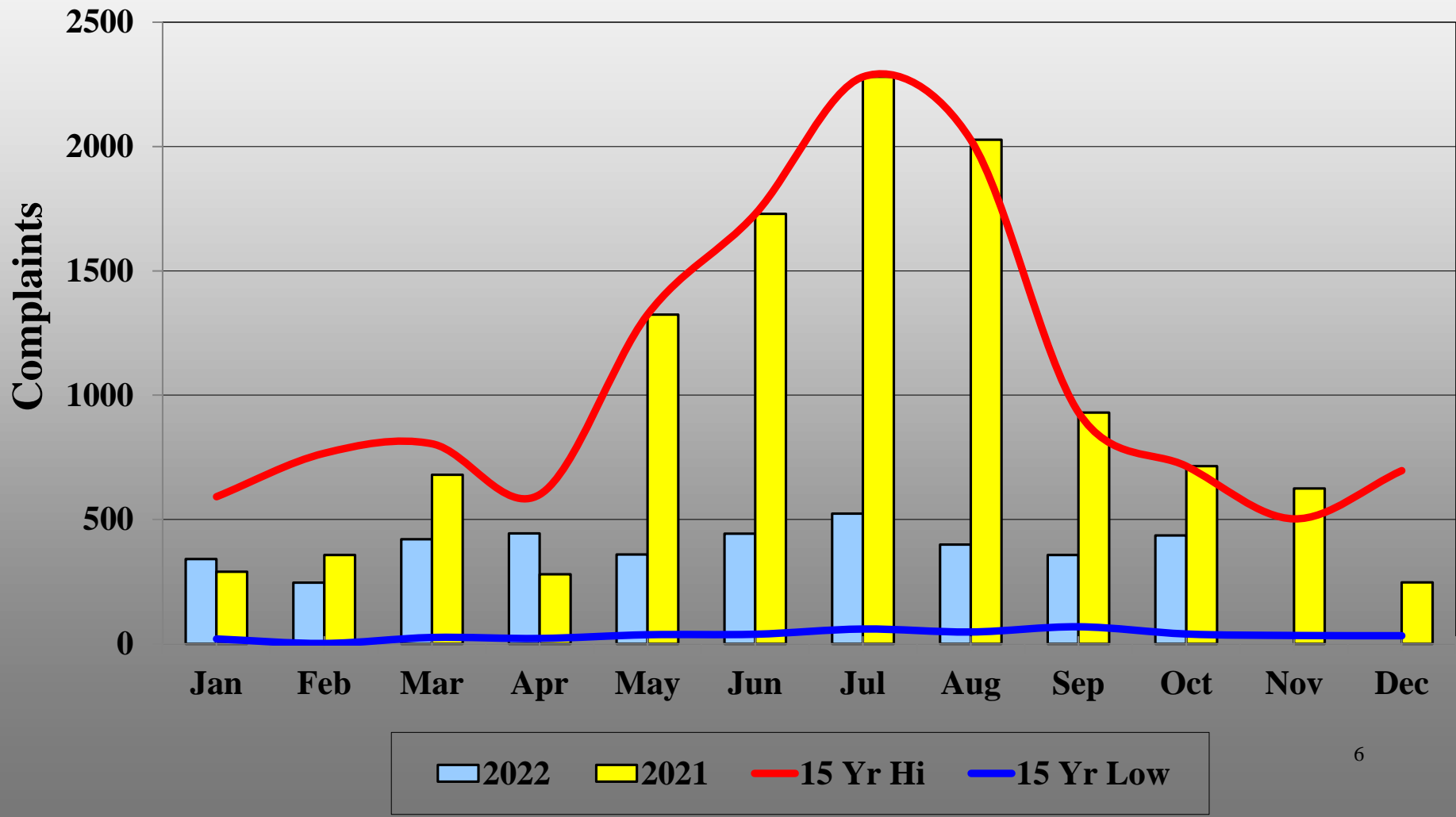
Annual Take-Off & Landing Count

■ Actual
 ■ Projected

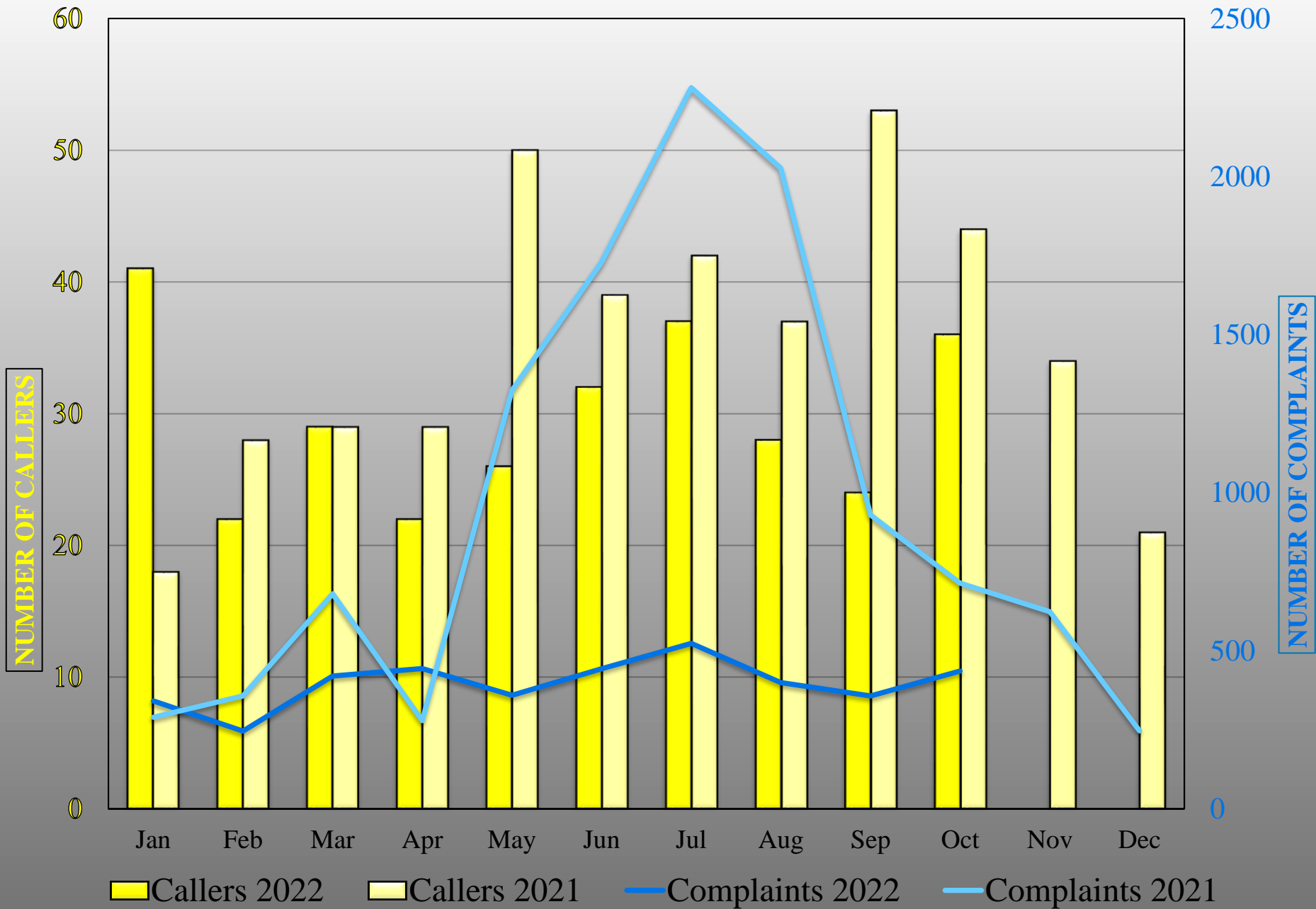




Total Monthly Complaints



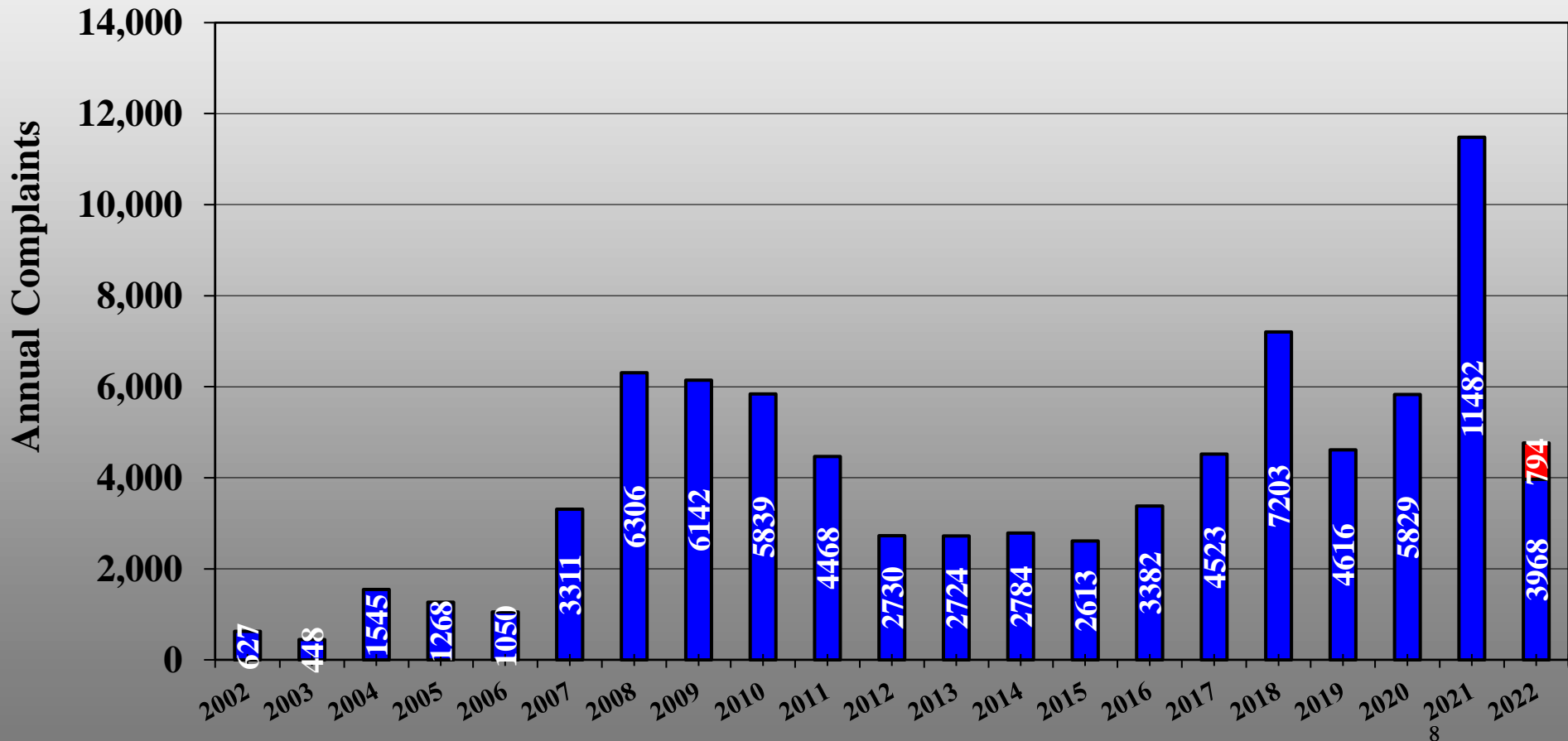
Callers & Complaints





Annual Complaints

■ Actual
 ■ Projected





Complaints by Quadrant

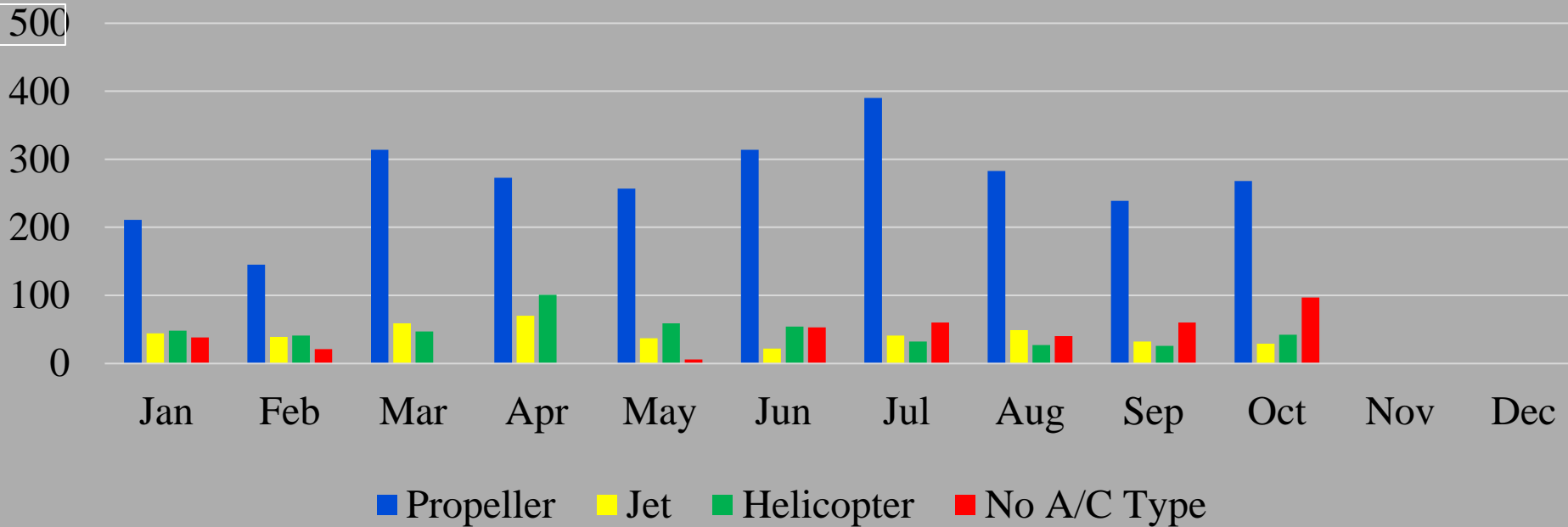
	Total Callers	Total Complaints	Filtered* Complaints
NW	10	61	28
SW	8	163	24
SE	12	192	23
NE	6	20	20
Total	36	436	95

80% of complaints were from 3 callers.

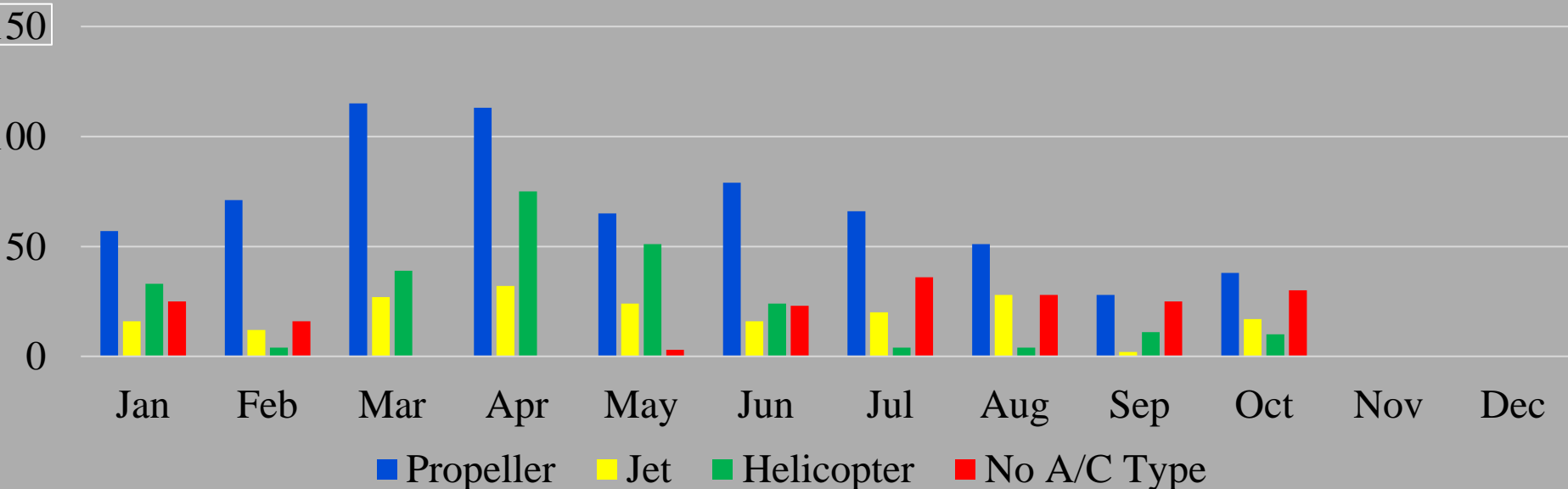
*In the filtered data set, the top 3 caller's complaints were reduced to the average number of complaints reported by the other callers.

** 0 complaints from 0 caller was not included. **

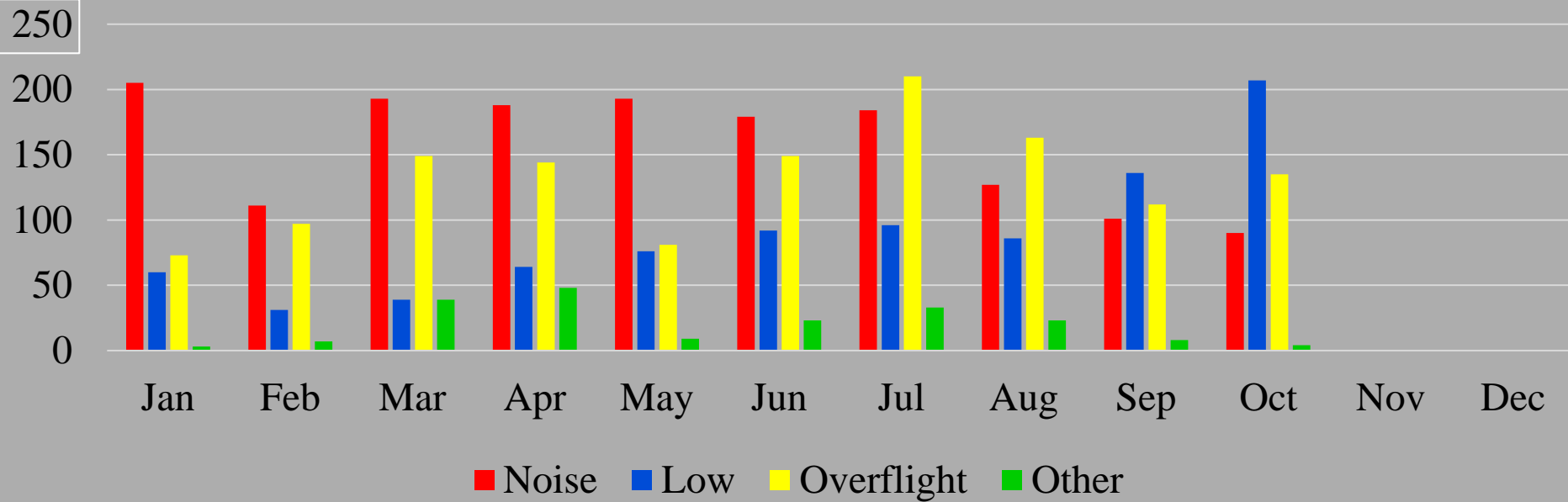
Complaints by Aircraft Type - All Data



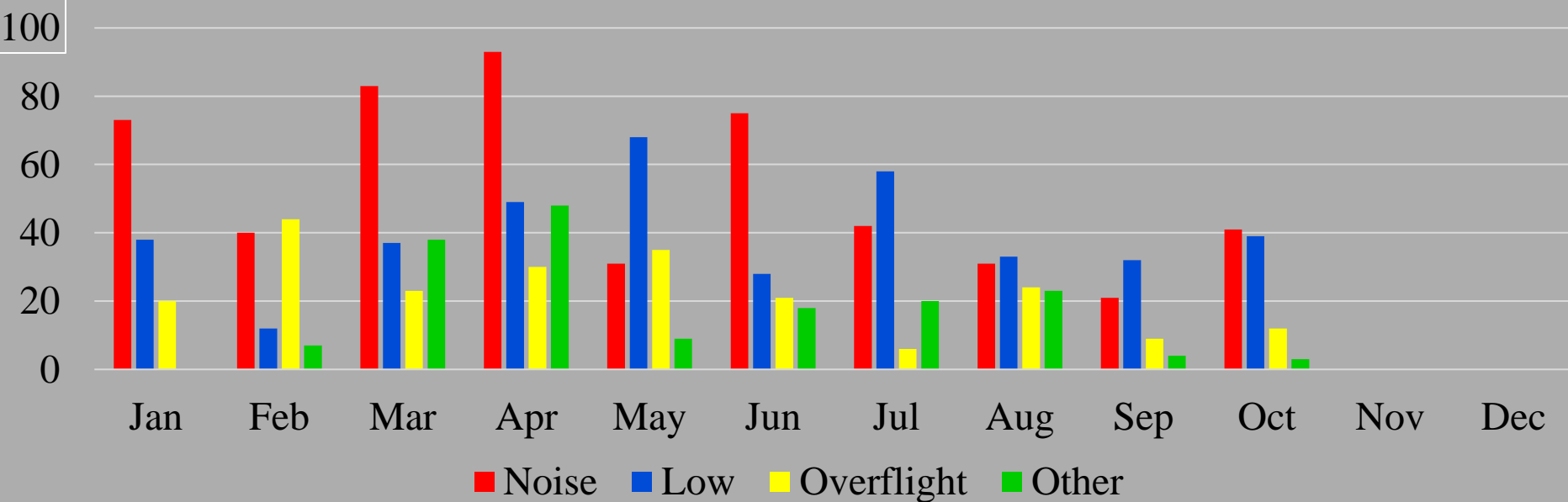
Complaints by Aircraft Type - Filtered Data



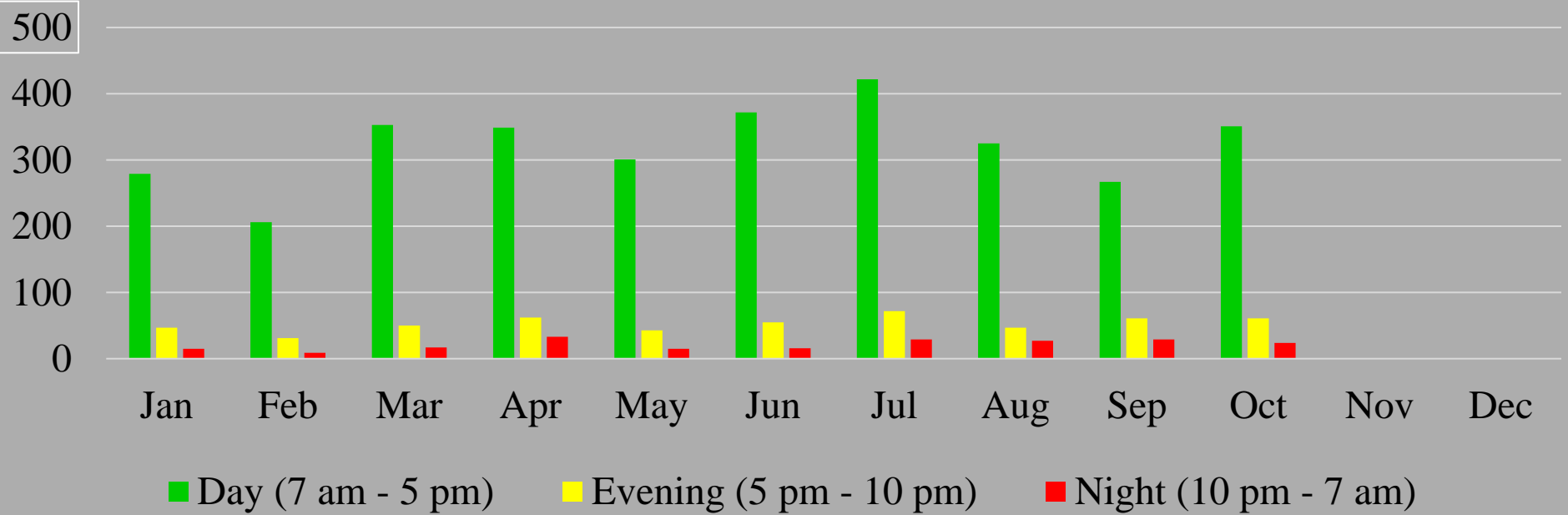
Complaints by Category - All Data



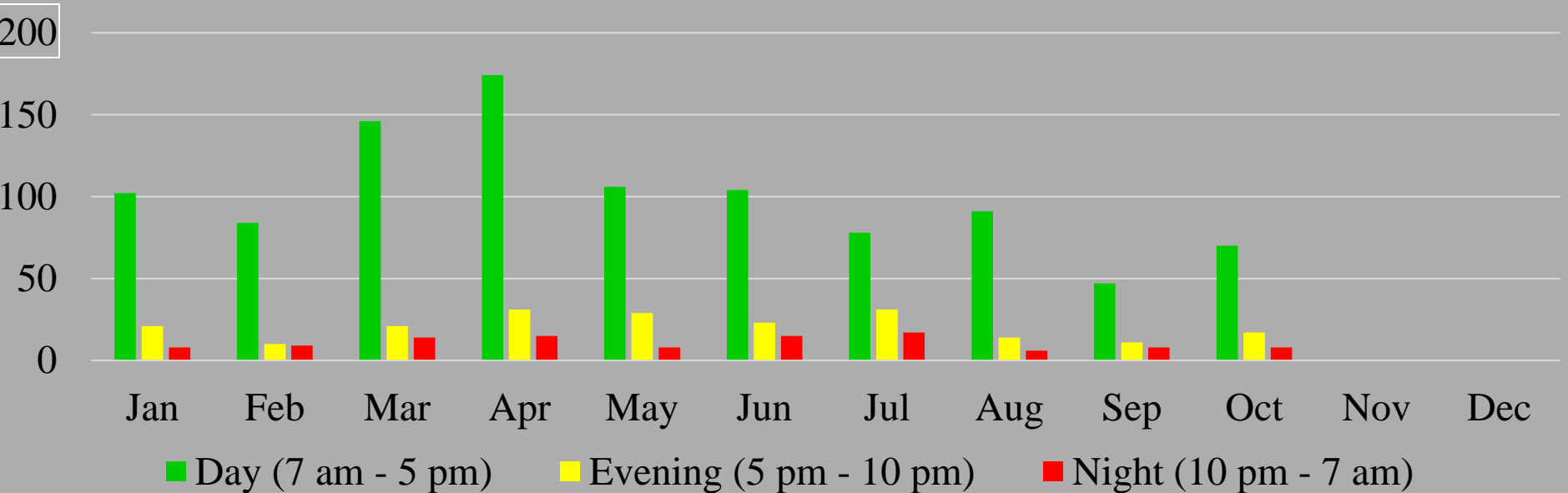
Complaints by Category - Filtered Data



Complaints by Time of Day - All Data



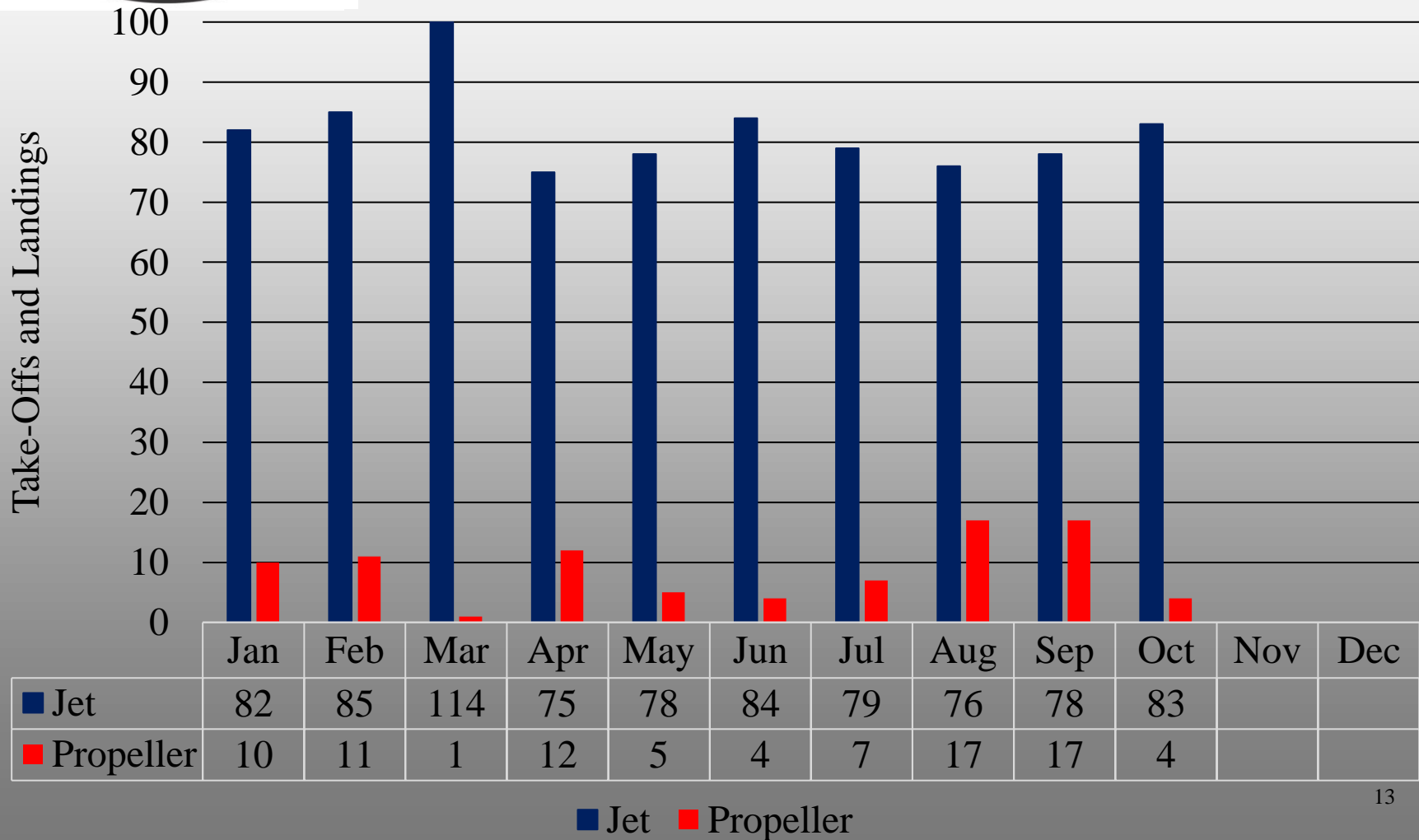
Complaints by Time of Day - Filtered Data





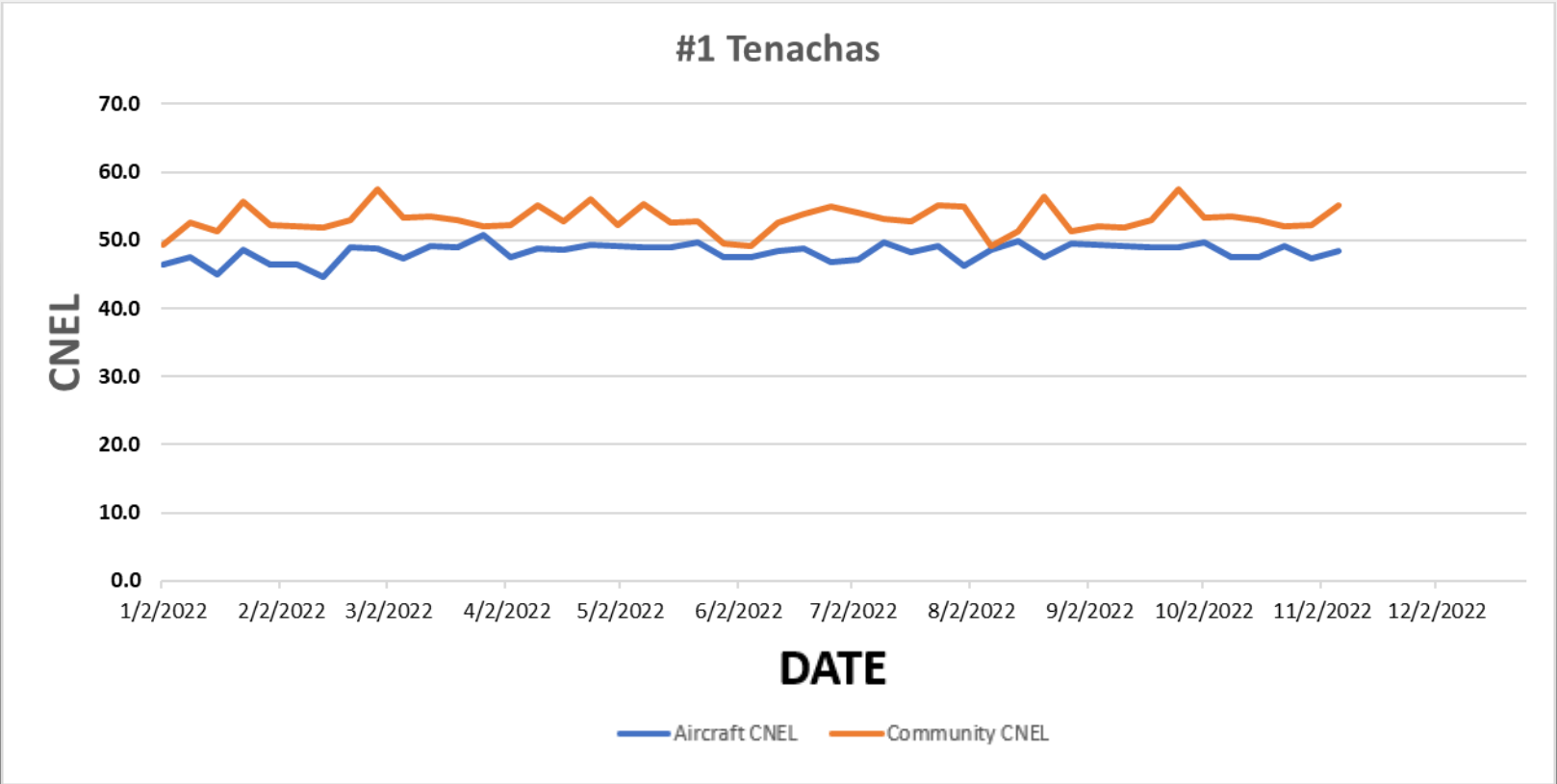
Flights During Voluntary Quiet Hours

Jets 10:00pm-7:00am, Props 12:00am-6:00am



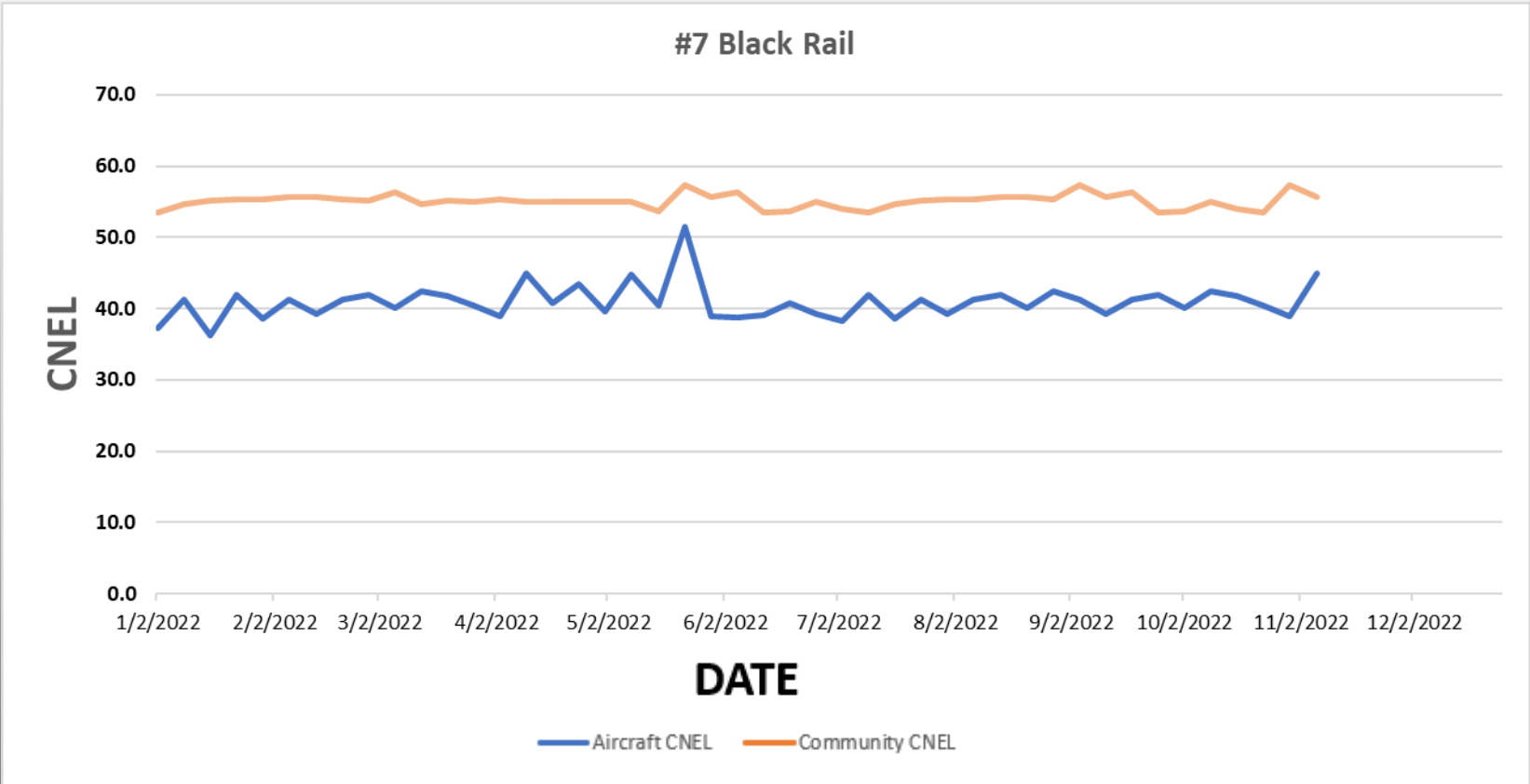


ANNUAL REVIEW OF NOISE MIC DATA



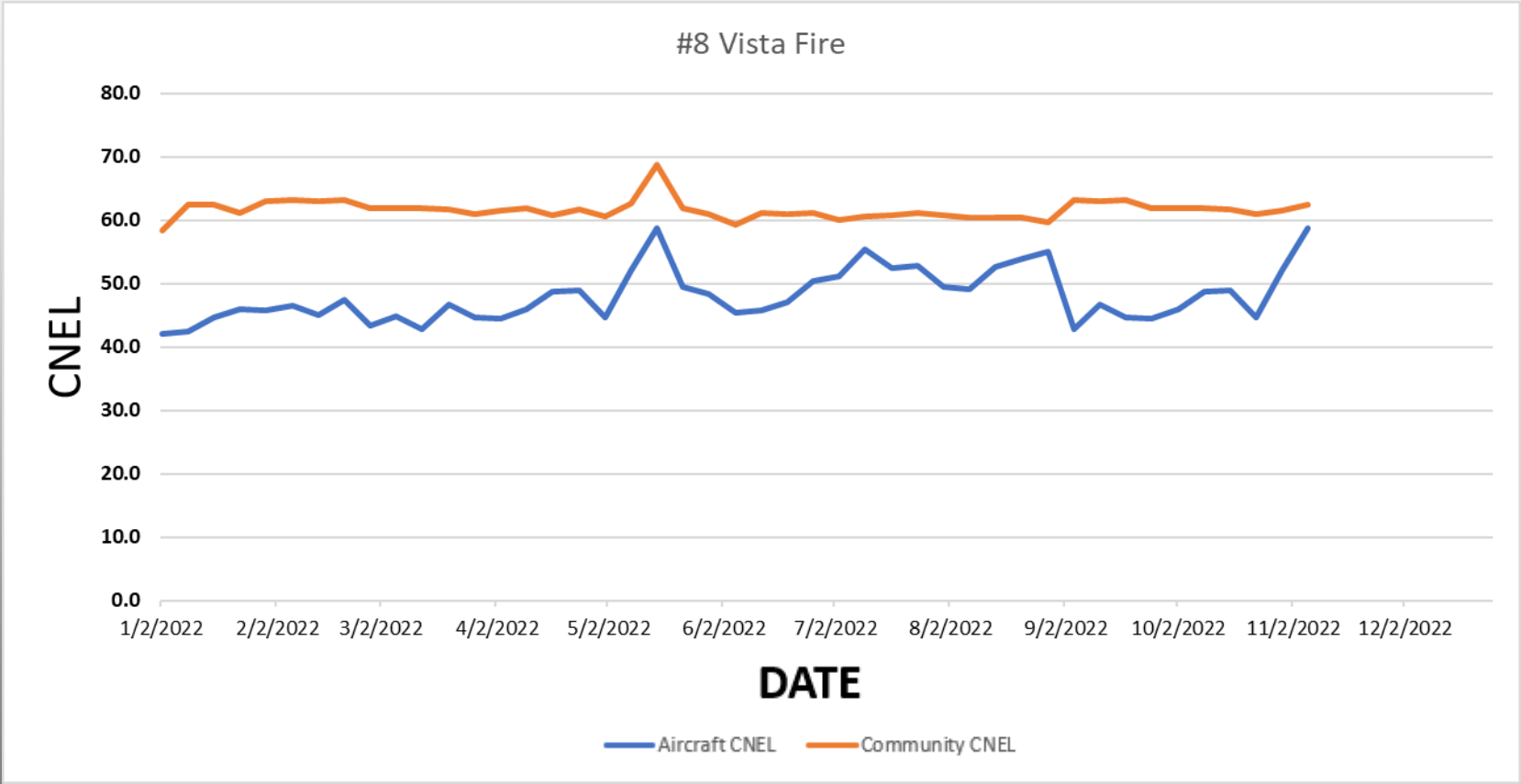


ANNUAL REVIEW OF NOISE MIC DATA



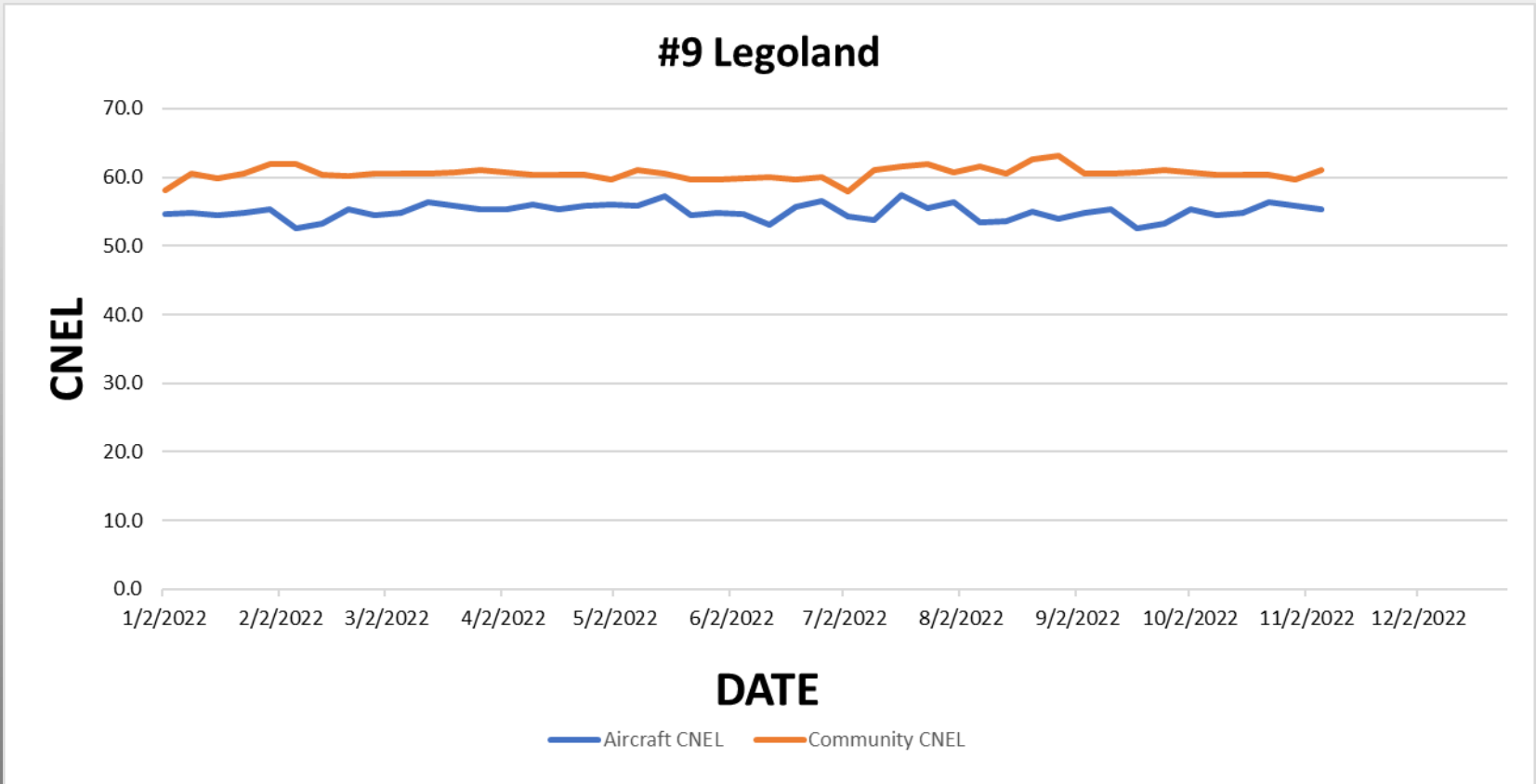


ANNUAL REVIEW OF NOISE MIC DATA





ANNUAL REVIEW OF NOISE MIC DATA





October 2022

Newly installed VNAP sign at Palomar Airport. Sign is in the runway 24 runup area for all pilots and to see.





October 2022

Questions or Comments?