

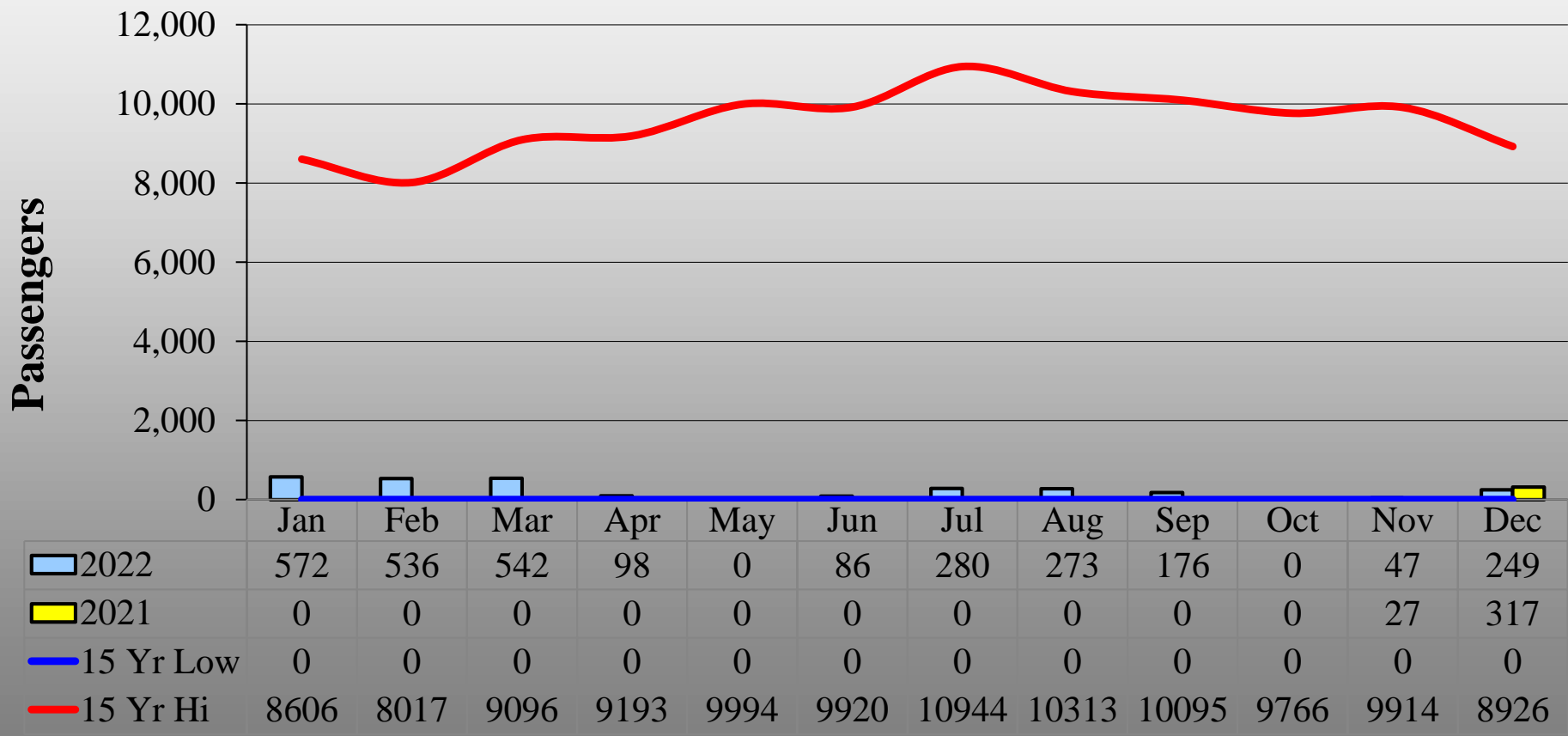
McClellan-Palomar Airport Monthly Airport Performance Report



December 2022



Monthly Enplanements

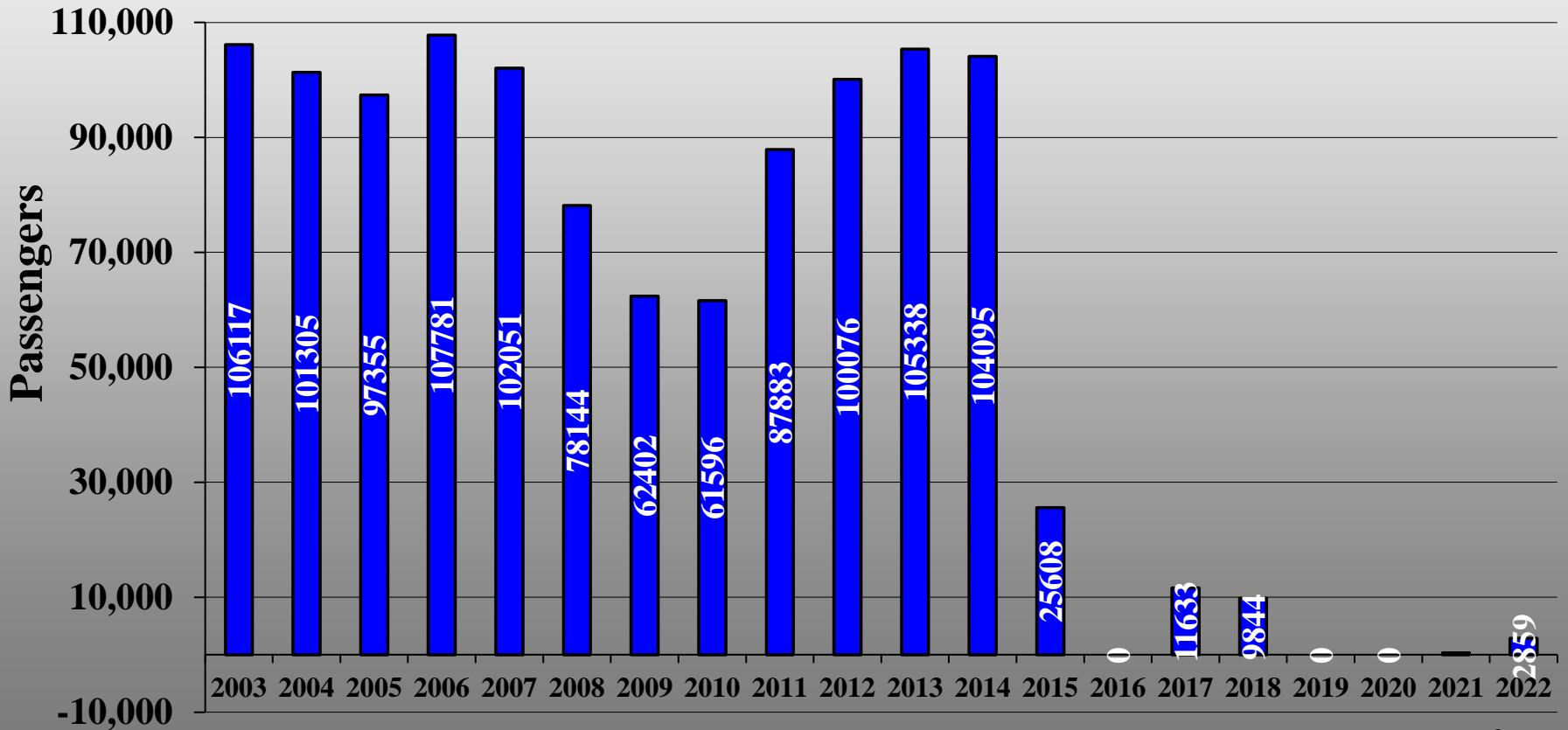


■ 2022
 ■ 2021
 — 15 Yr Low
 — 15 Yr Hi



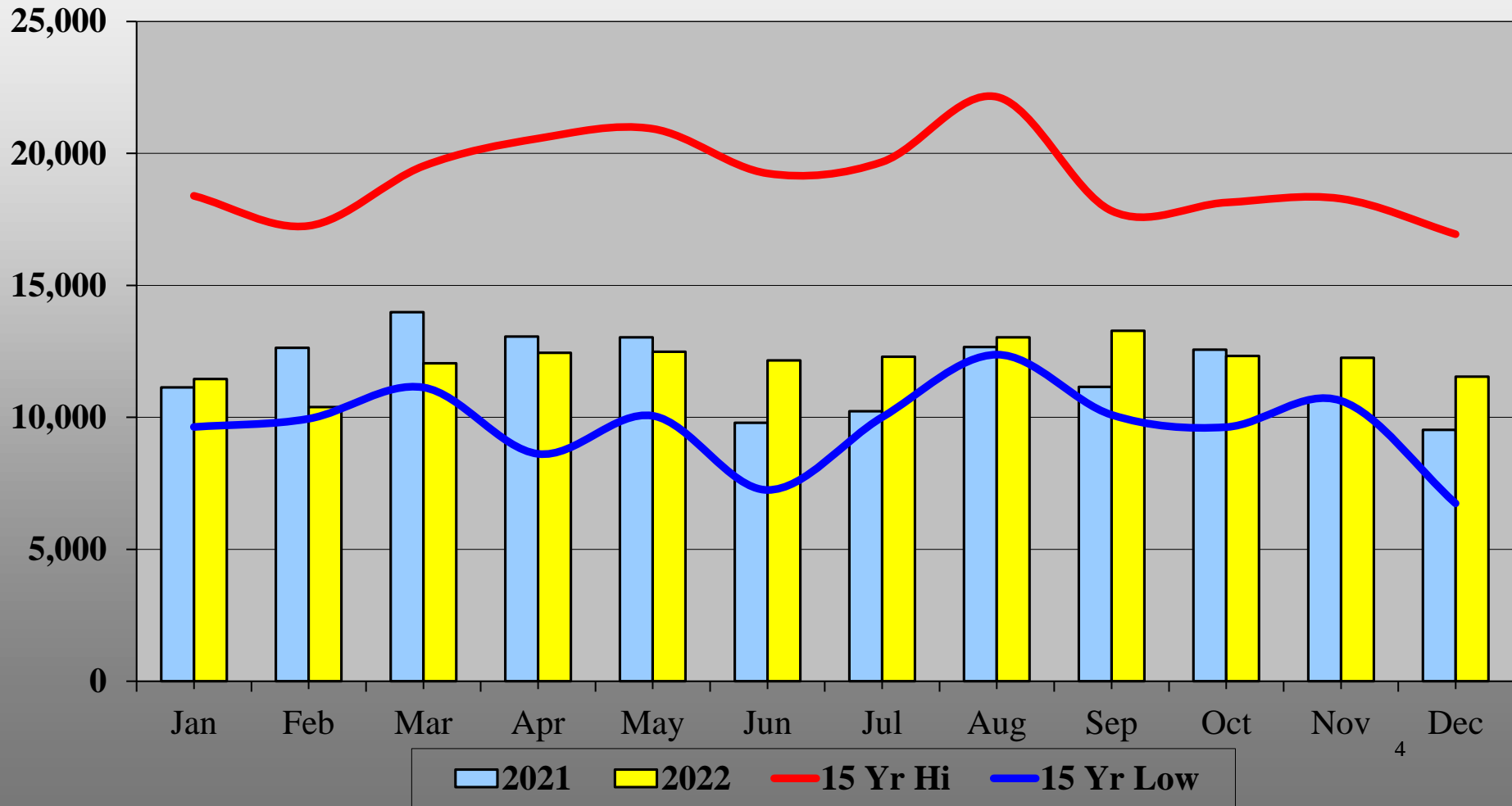
Annual Enplanements

■ Actual ■ Projected





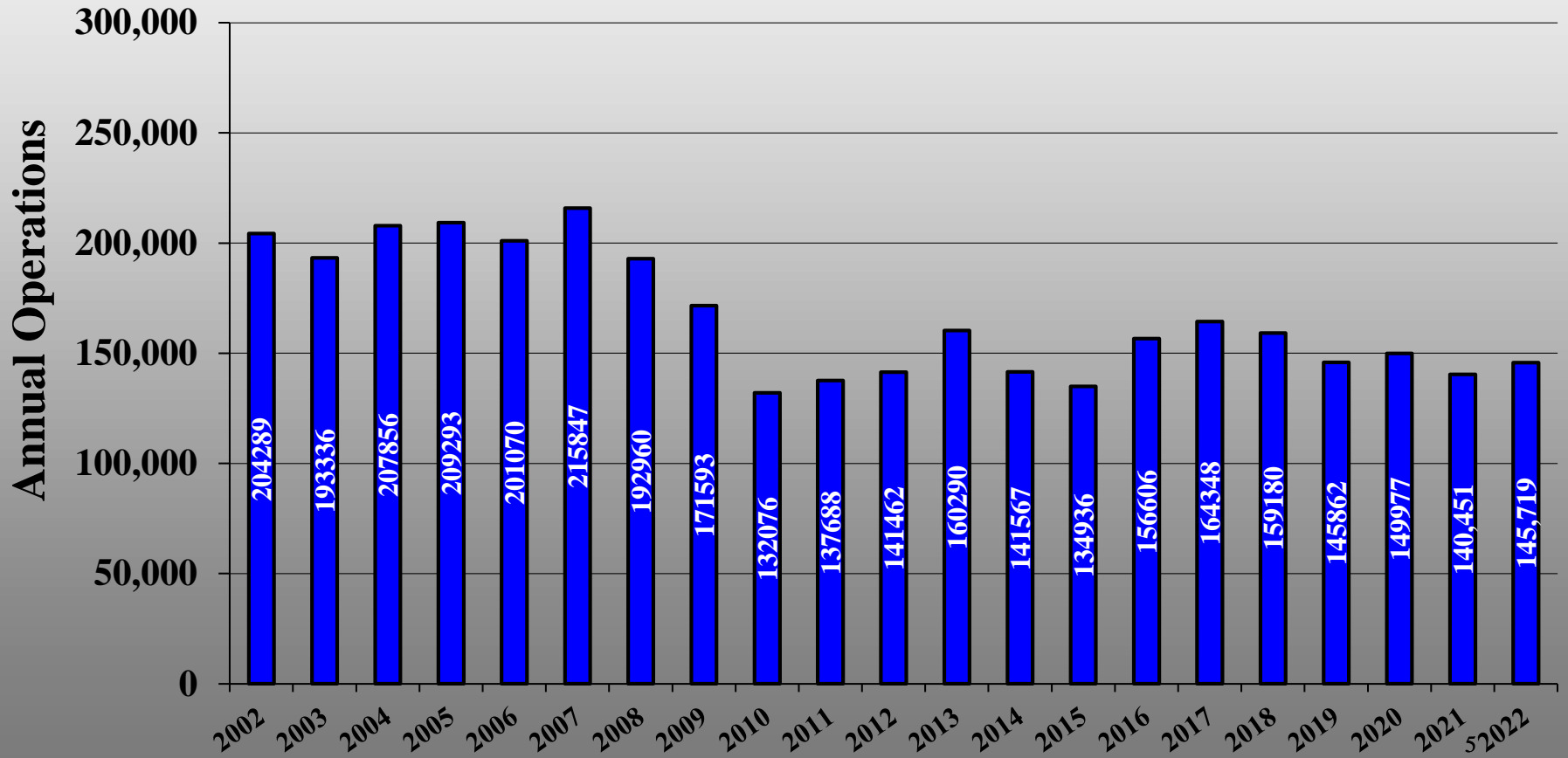
Monthly Take-Off & Landing Count





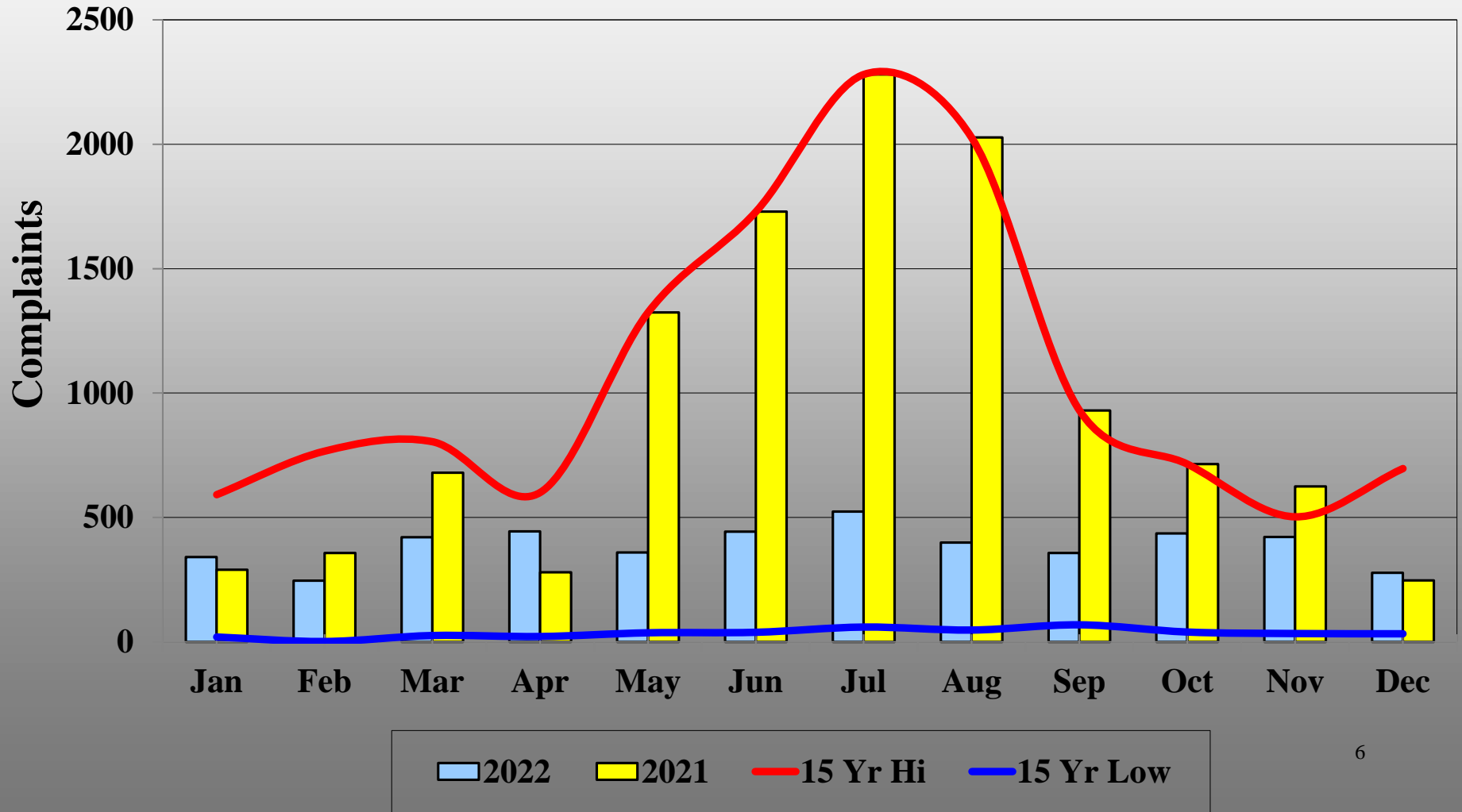
Annual Take-Off & Landing Count

■ Actual
 ■ Projected

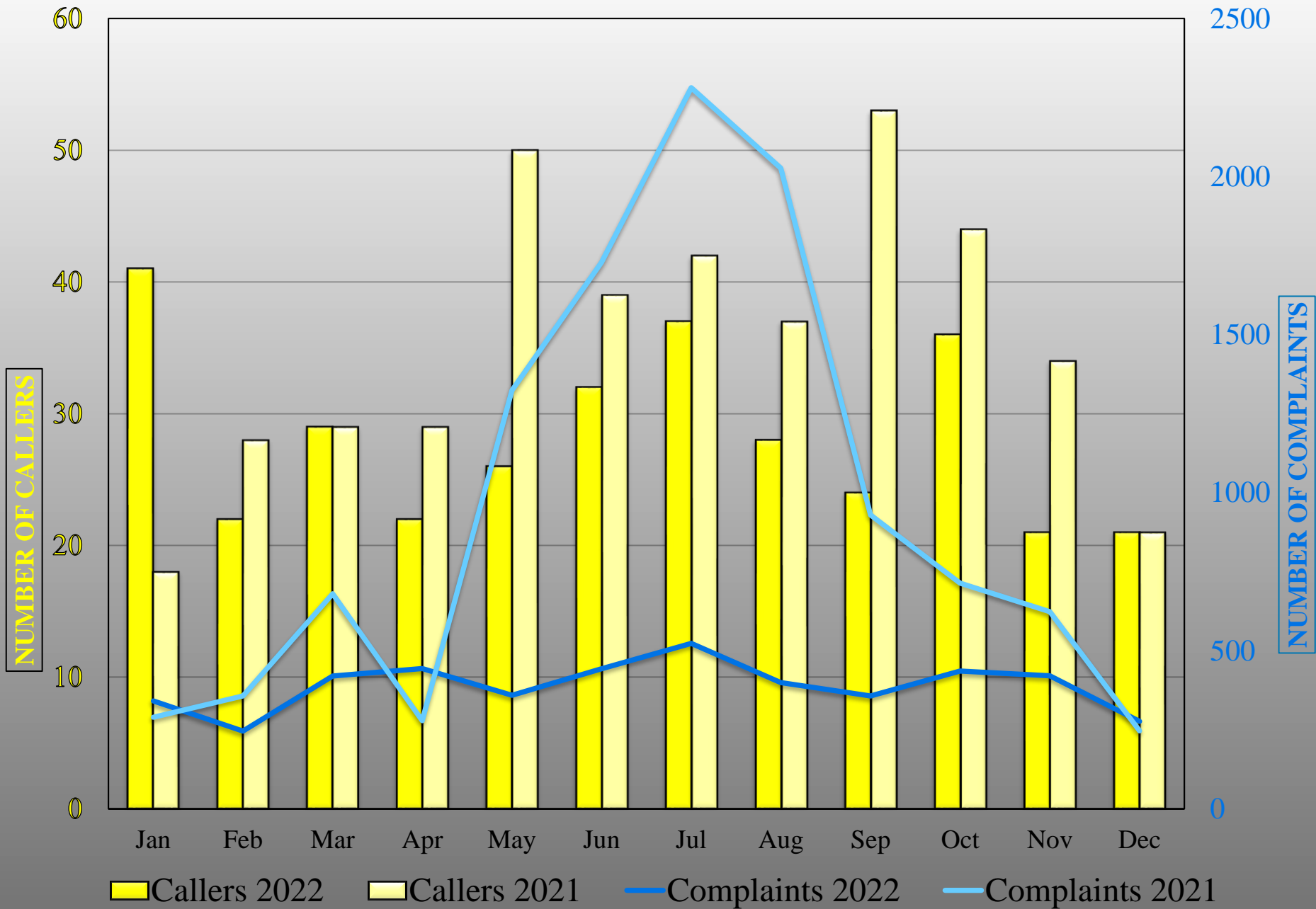




Total Monthly Complaints



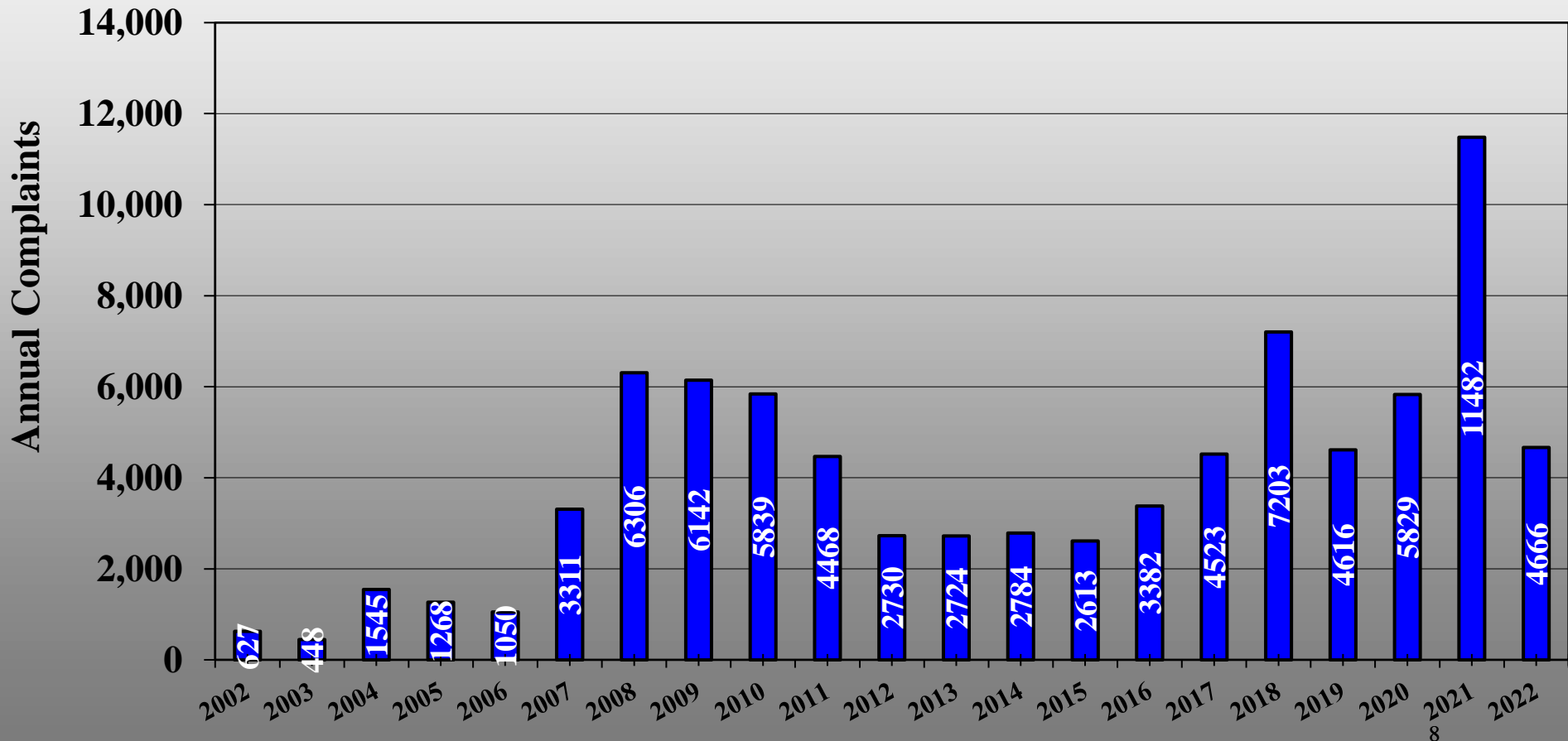
Callers & Complaints





Annual Complaints

■ Actual
 ■ Projected





Complaints by Quadrant

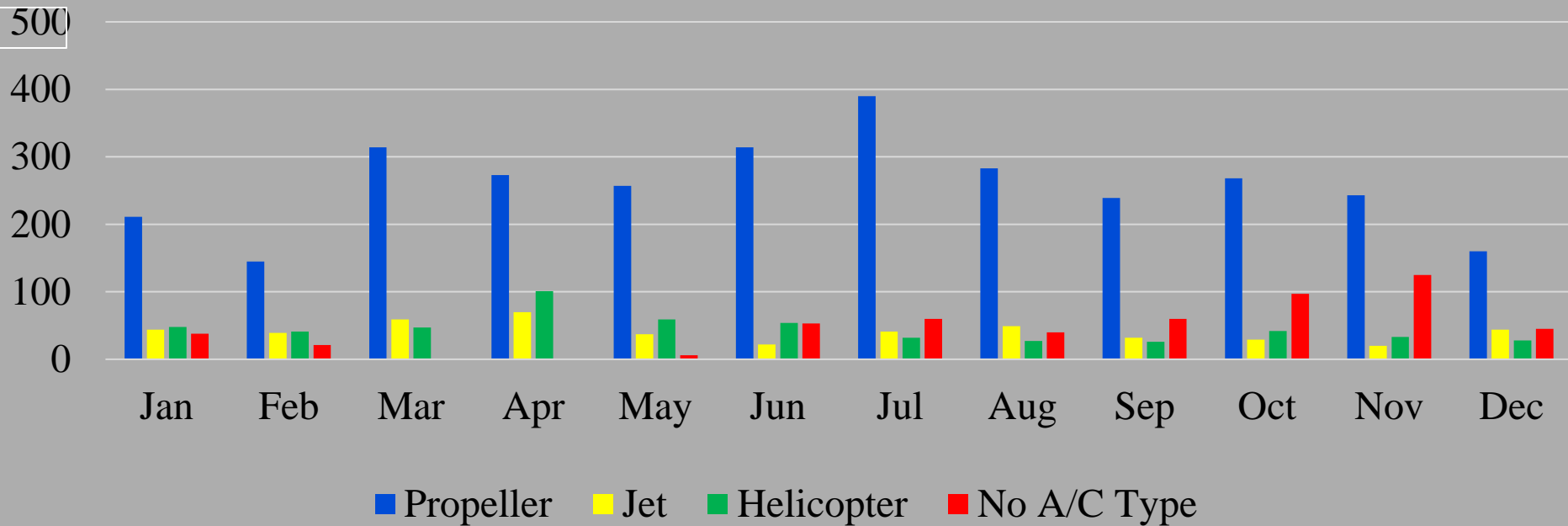
	Total Callers	Total Complaints	Filtered* Complaints
NW	6	56	23
SW	7	94	21
SE	8	99	58
NE	3	28	28
Total	24	277	130

58% of complaints were from 3 callers.

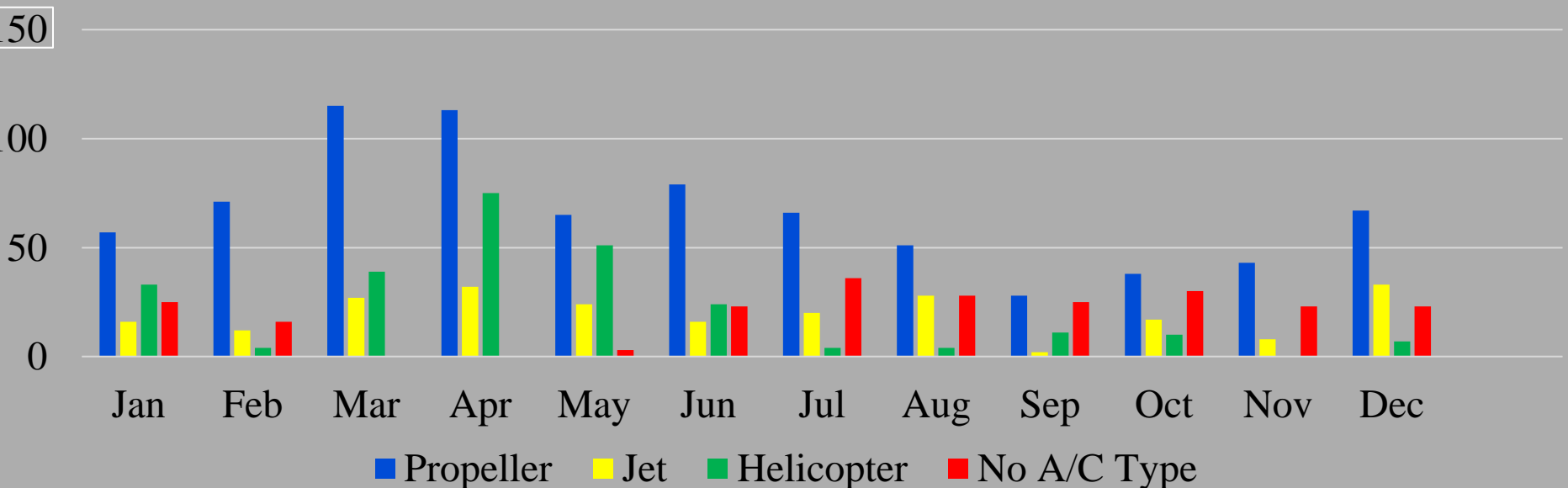
*In the filtered data set, the top 3 caller's complaints were reduced to the average number of complaints reported by the other callers.

** 0 complaints from 0 caller was not included. **

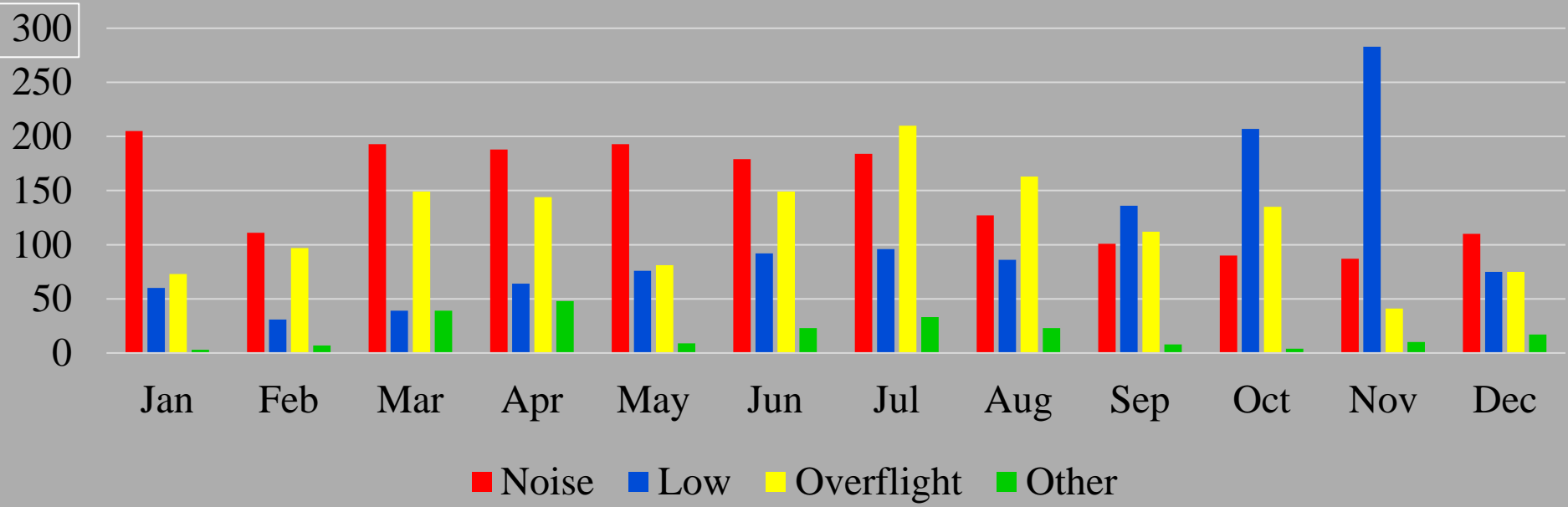
Complaints by Aircraft Type - All Data



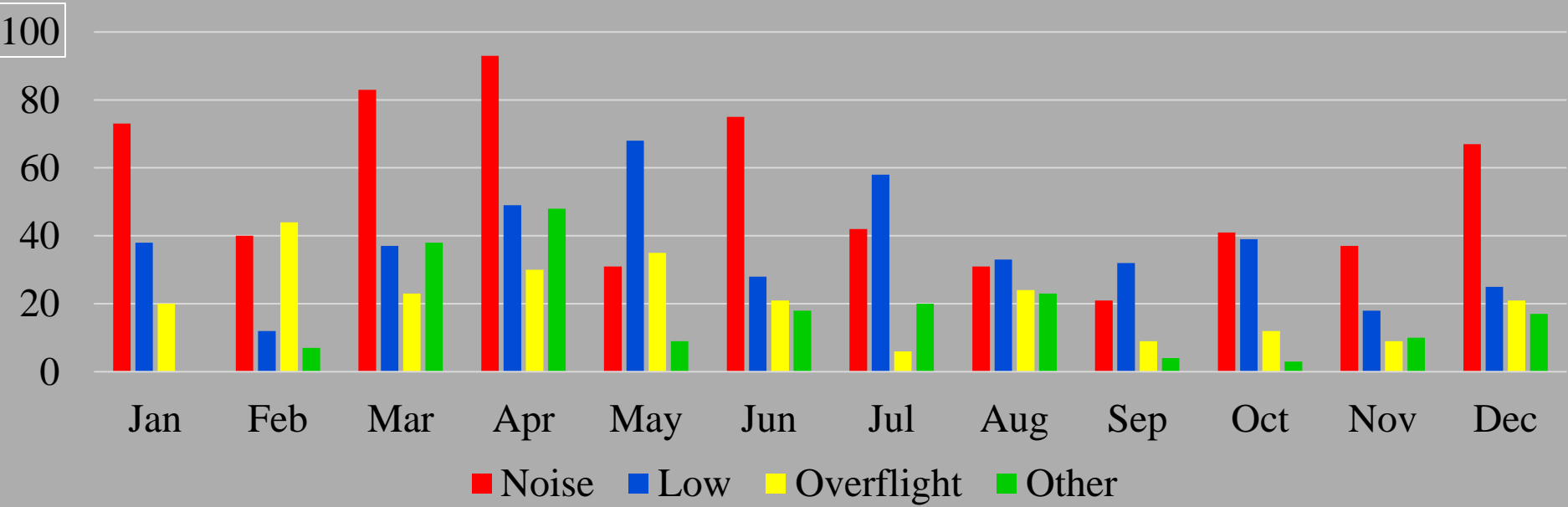
Complaints by Aircraft Type - Filtered Data



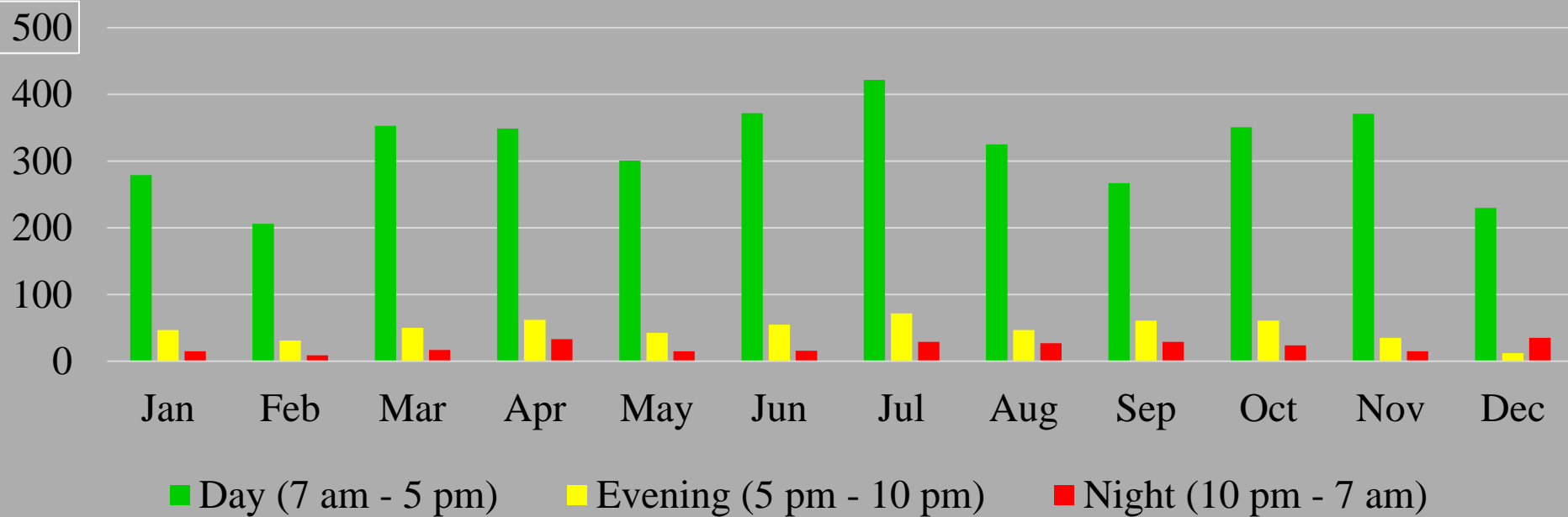
Complaints by Category - All Data



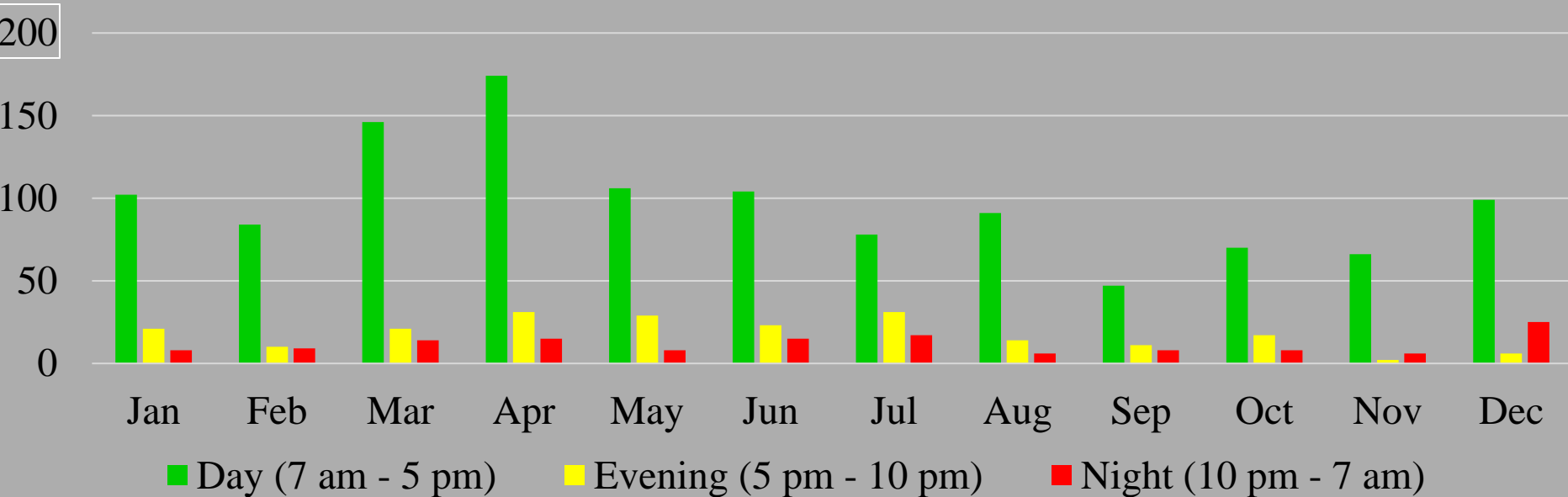
Complaints by Category - Filtered Data



Complaints by Time of Day - All Data



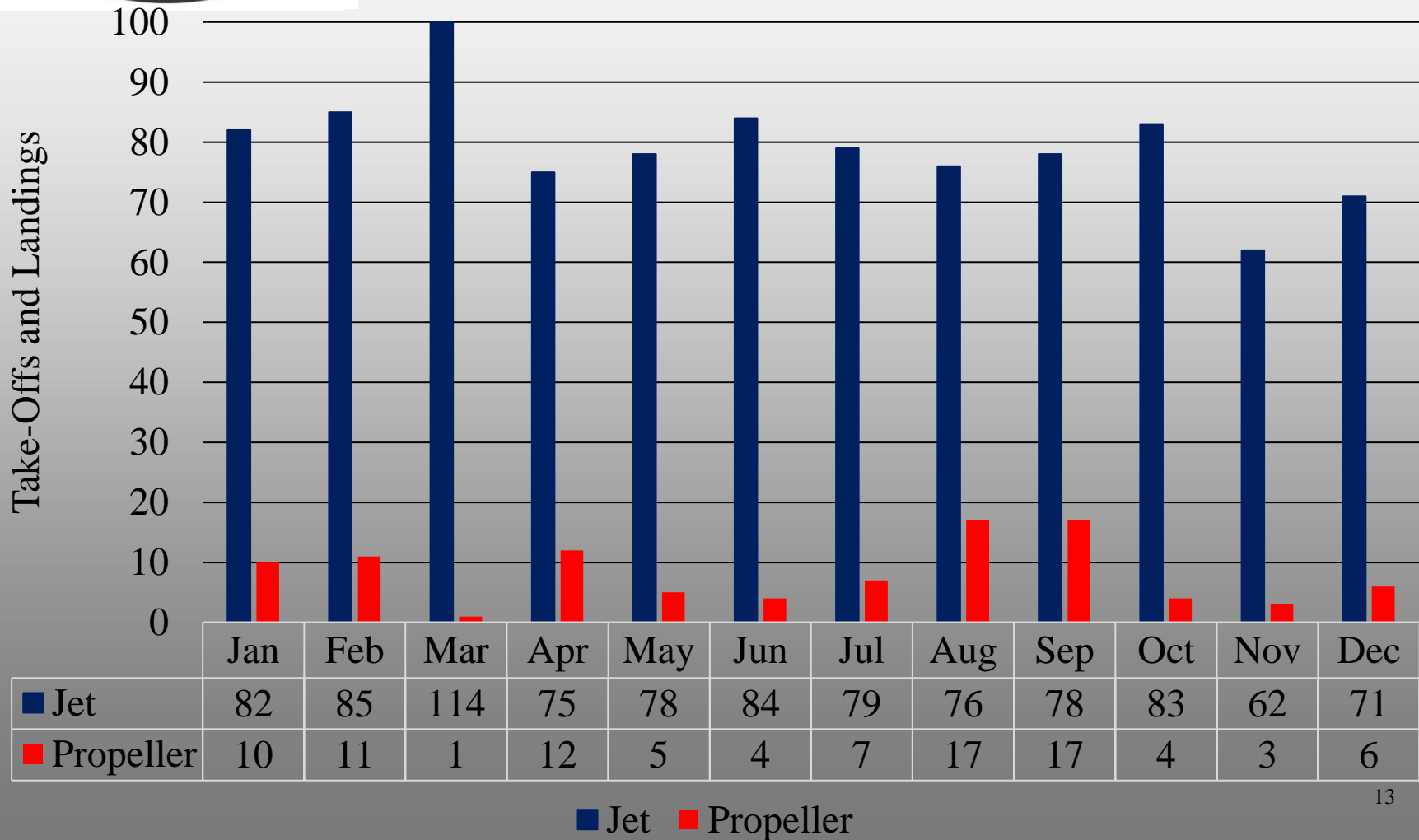
Complaints by Time of Day - Filtered Data





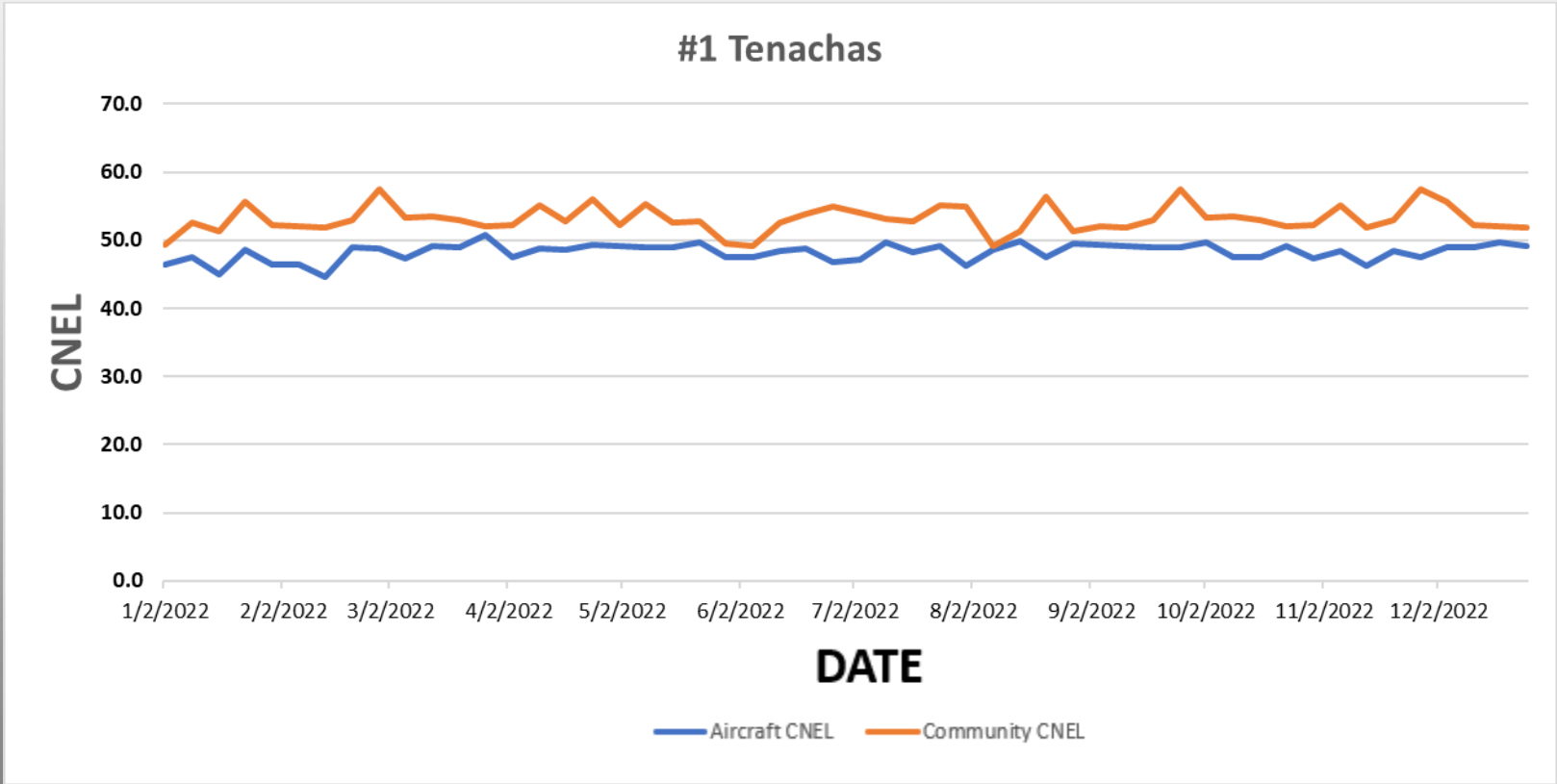
Flights During Voluntary Quiet Hours

Jets 10:00pm-7:00am, Props 12:00am-6:00am



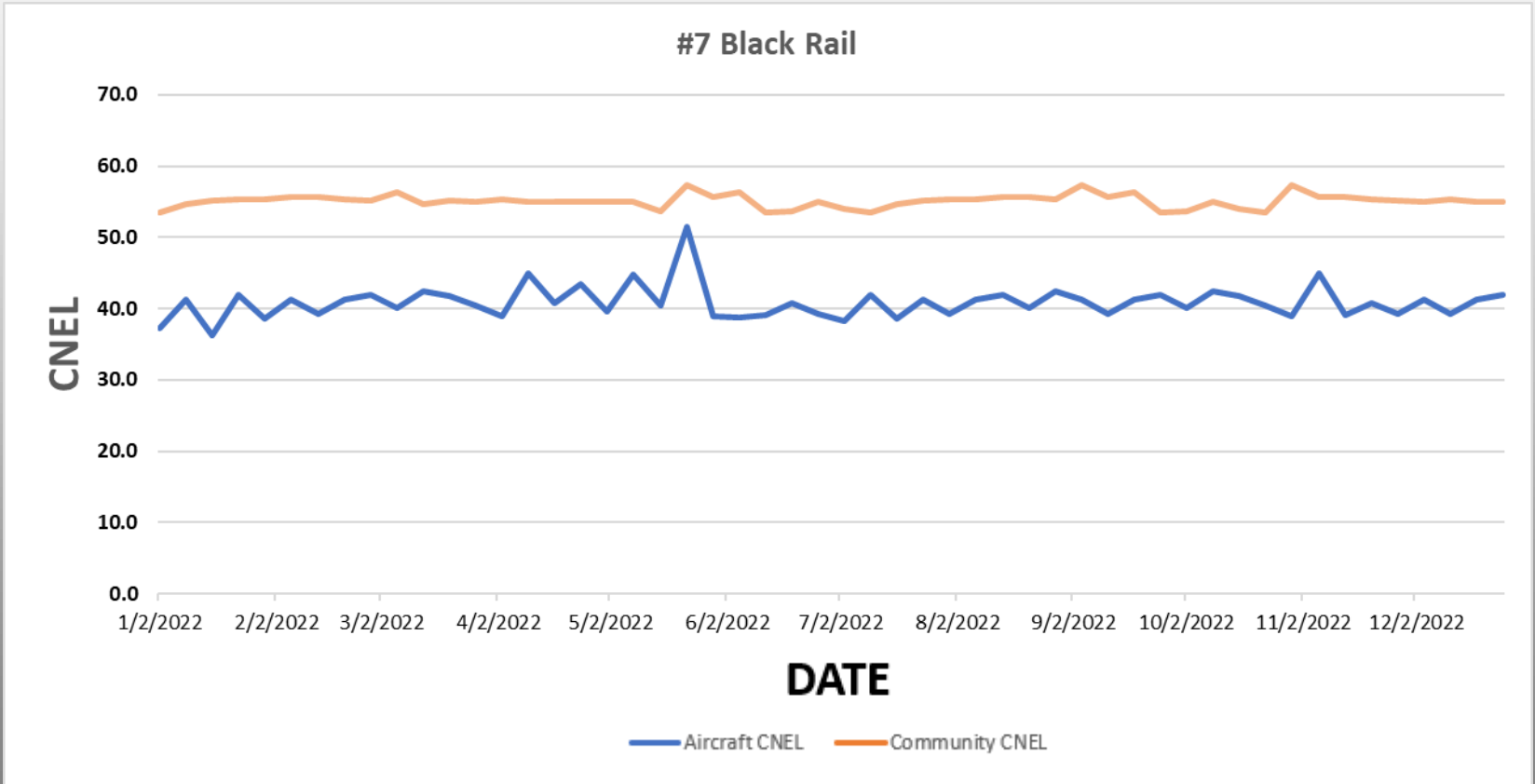


ANNUAL REVIEW OF NOISE MIC DATA



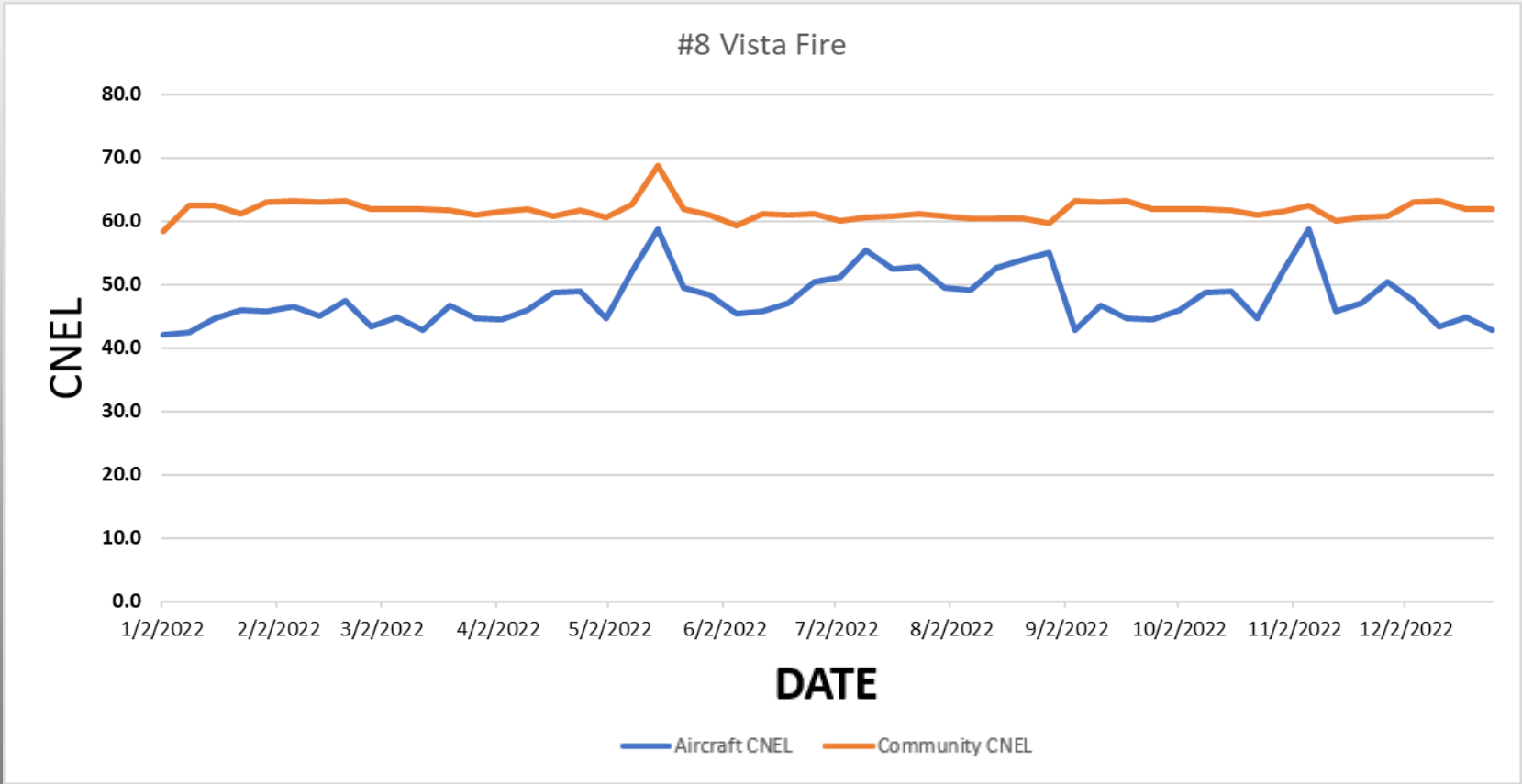


ANNUAL REVIEW OF NOISE MIC DATA



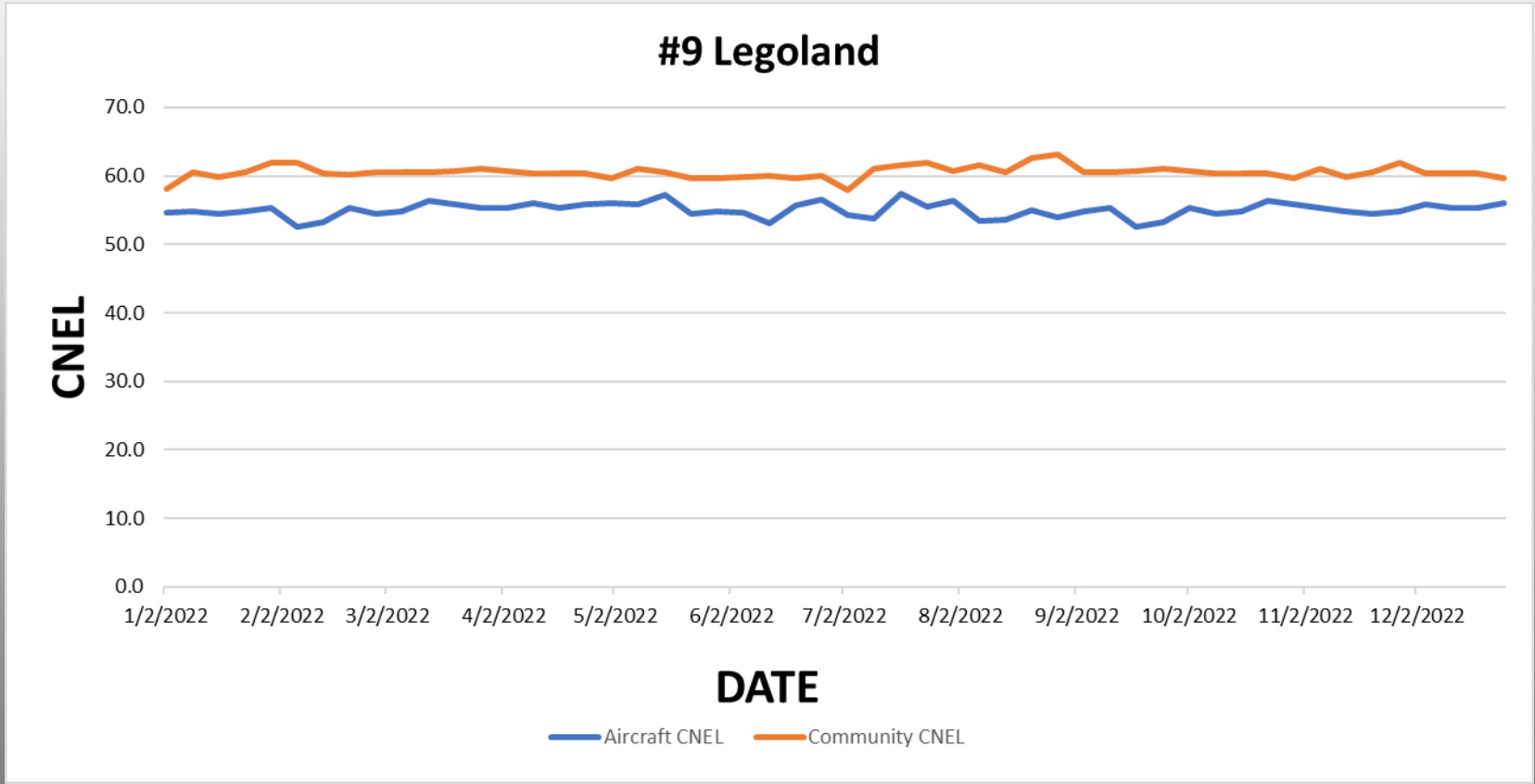


ANNUAL REVIEW OF NOISE MIC DATA





ANNUAL REVIEW OF NOISE MIC DATA





December 2022

Questions or Comments?