

## Revised Draft PEIR

### **Figures associated with Runway Protection Zones**

<b>Figure Number</b>	<b>Figure Title</b>
1-4	Parcels Within Runway Protection Zones
1-5	Phased Development Plan
4-1a	B-II Enhanced Alternative
4-1b	B-II Enhanced Alternative: Runway Protection Zones
4-2a	D-III Full Compliance Alternative
4-2b	D-III Full Compliance Alternative: Runway Protection Zones
4-3a	D-III Modified Standards Alternative
4-3b	D-III Modified Standards Alternative: Runway Protection Zones
4-4a	D-III On-Property Alternative
4-4b	D-III On-Property Alternative: Runway Protection Zones
4-5a	C-III Modified Standards Alternative
4-5b	C-III Modified Standards Alternative: Runway Protection Zones
4-6a	Public Comment Alternative
4-6b	Public Comment Alternative: Runway Protection Zones

This page intentionally left blank







## CONCEPTUAL DEVELOPMENT PHASES/FEATURES:

### NEAR-TERM (0-7 YEARS)

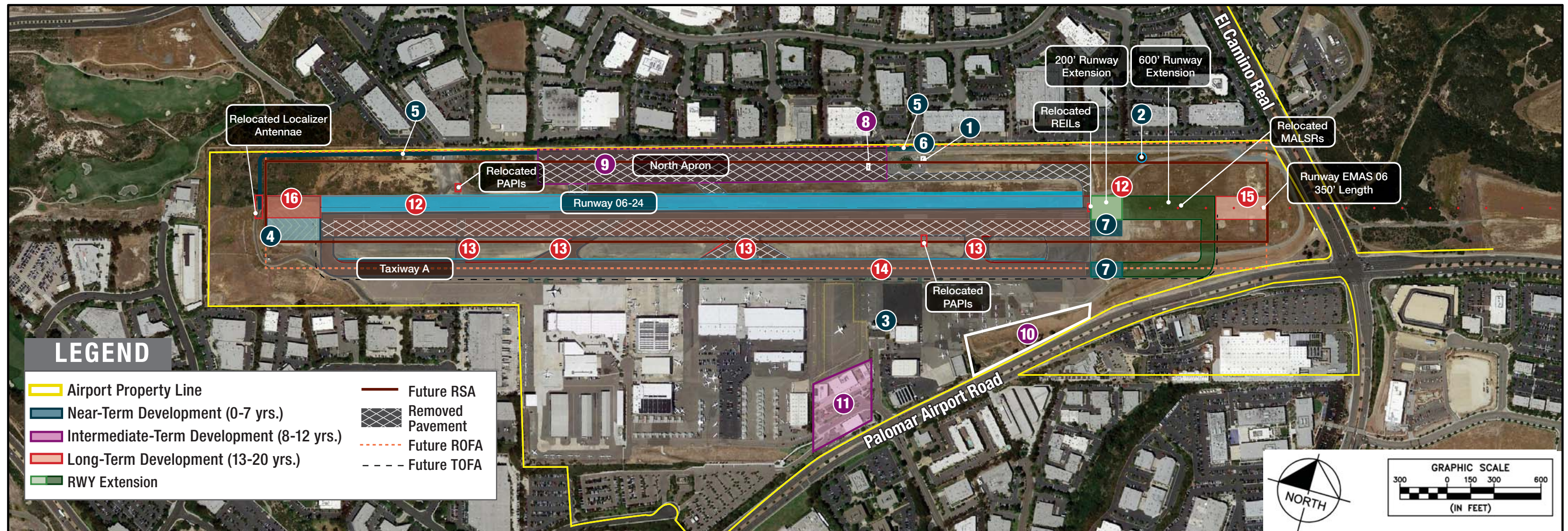
- 1 Relocation of the Glideslope Building and Antenna
- 2 Relocation of the Segmented Circle and Windsock Equipment
- 3 Relocation of ARFF Facility
- 4 Construction of EMAS System for RWY 24
- 5 Relocation of the Vehicle Service Road
- 6 Relocation of Lighting Vault
- 7 200' Extension of Existing RWY 06-24 and TWY A

### INTERMEDIATE-TERM (8-12 YEARS)

- 8 Removal of Fuel Farm on North Apron
- 9 Removal of the North Apron and TWY N
- 10 Area Reserved for Future GA Parking
- 11 Passenger/Admin/Parking Facility Improvements

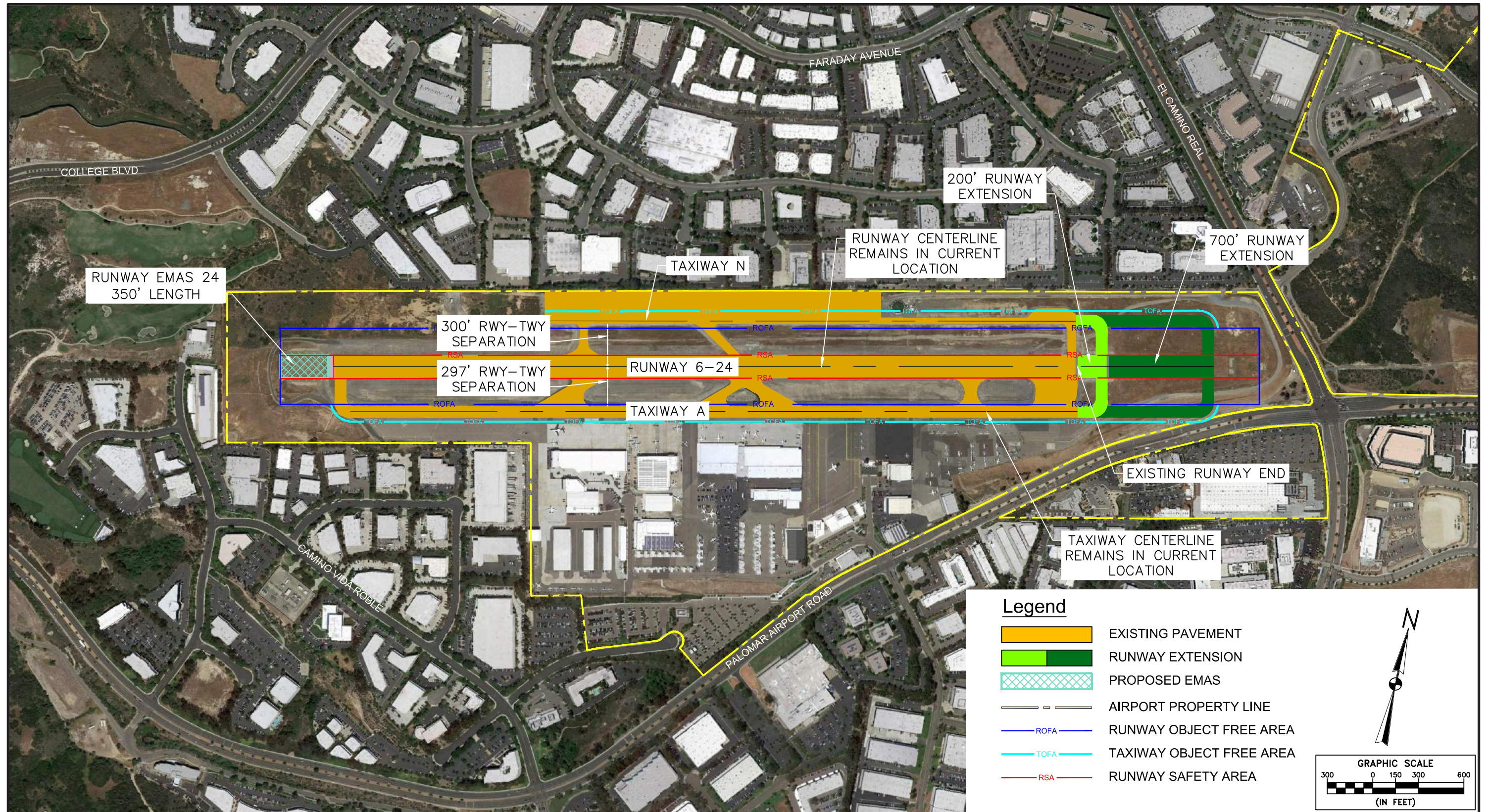
### PHASE 3: LONG-TERM (13-20 YEARS)

- 12 Relocation / 200'/600' Extension of RWY 06-24 (Includes REILs, PAPIs, Localizer Antennae and MALSRs)
- 13 Removal/Reconstruction of Existing Connector Taxiways
- 14 Removal/Reconstruction of Existing TWY A (Includes Lighting)
- 15 Construction of EMAS System for RWY 06
- 16 Relocation of EMAS System for RWY 24



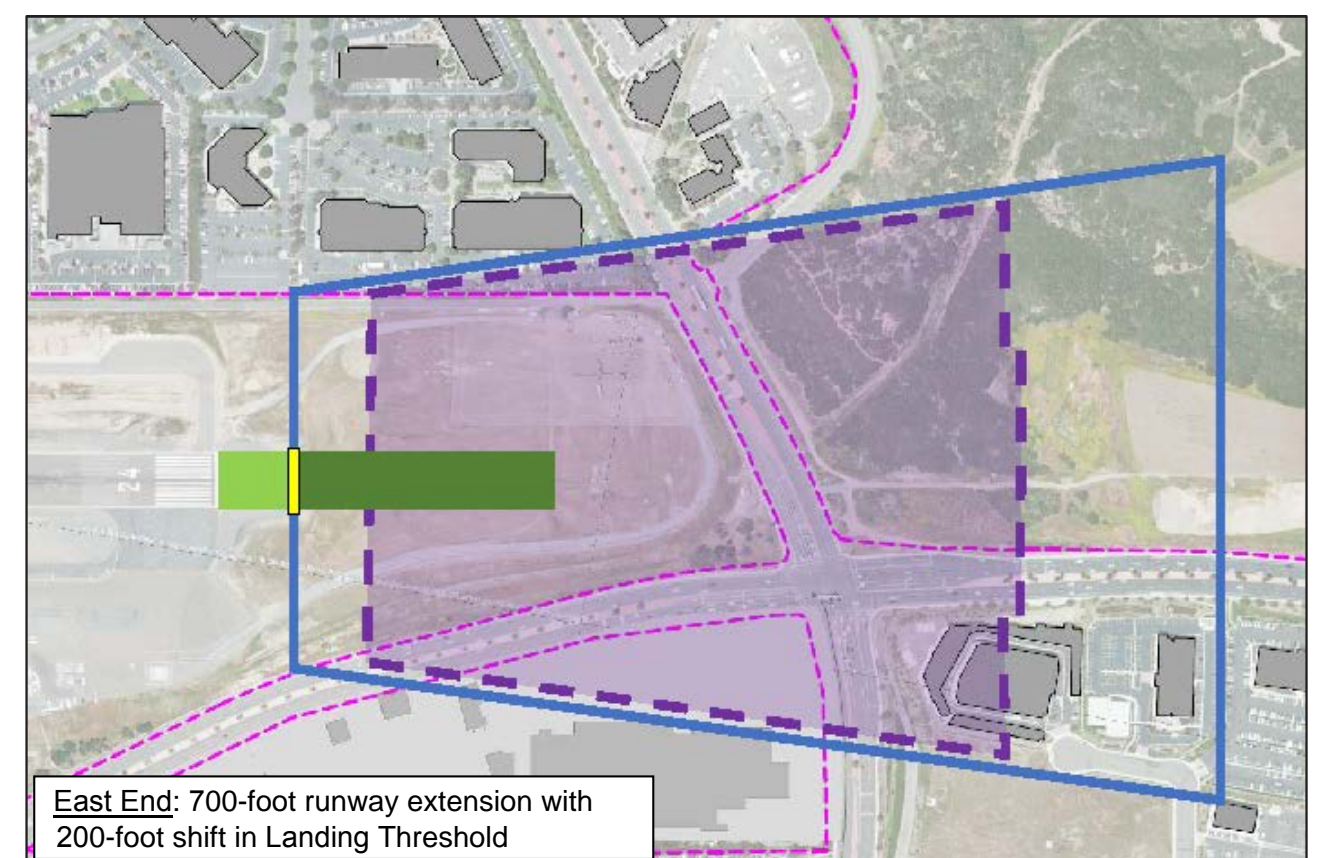
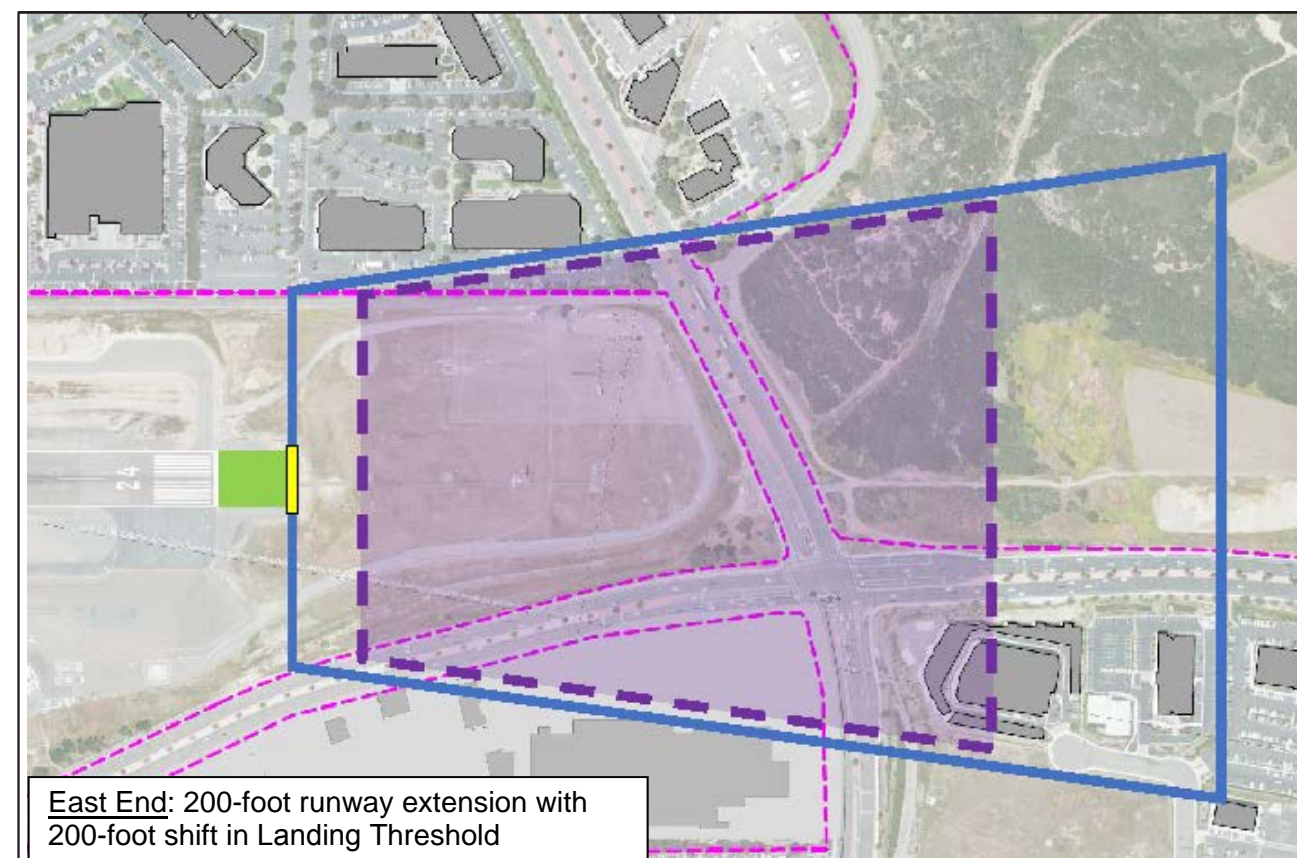
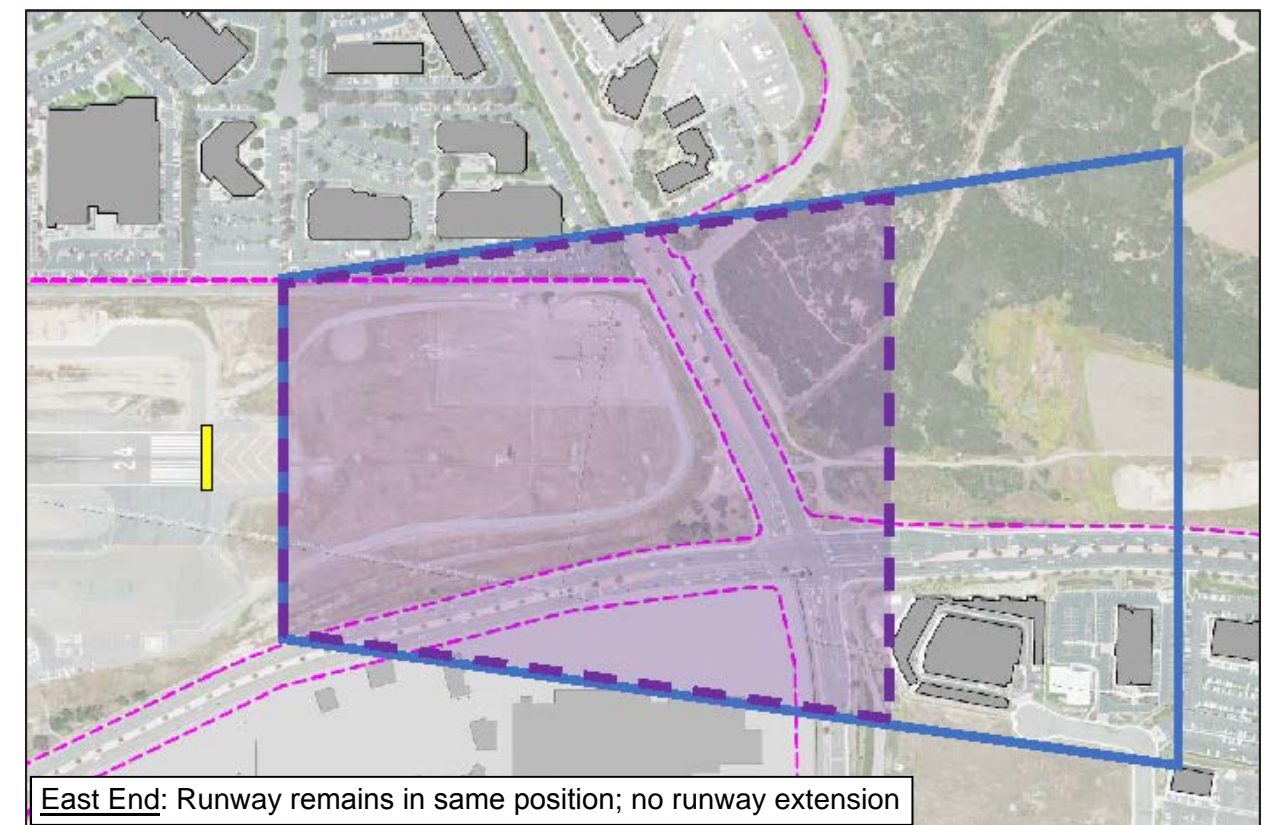
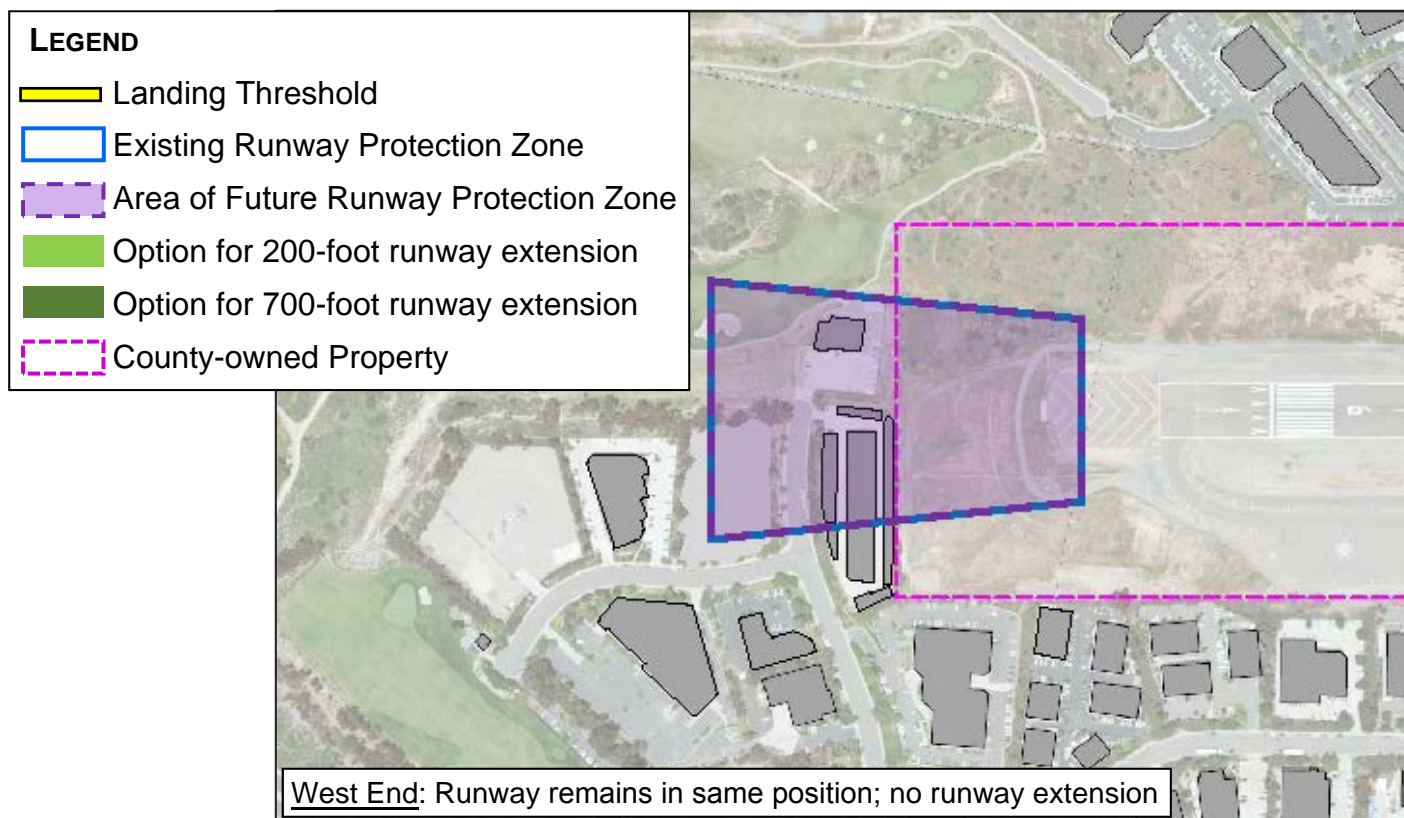
Source: Kimley-Horn 2017





Source: Kimley-Horn 2017



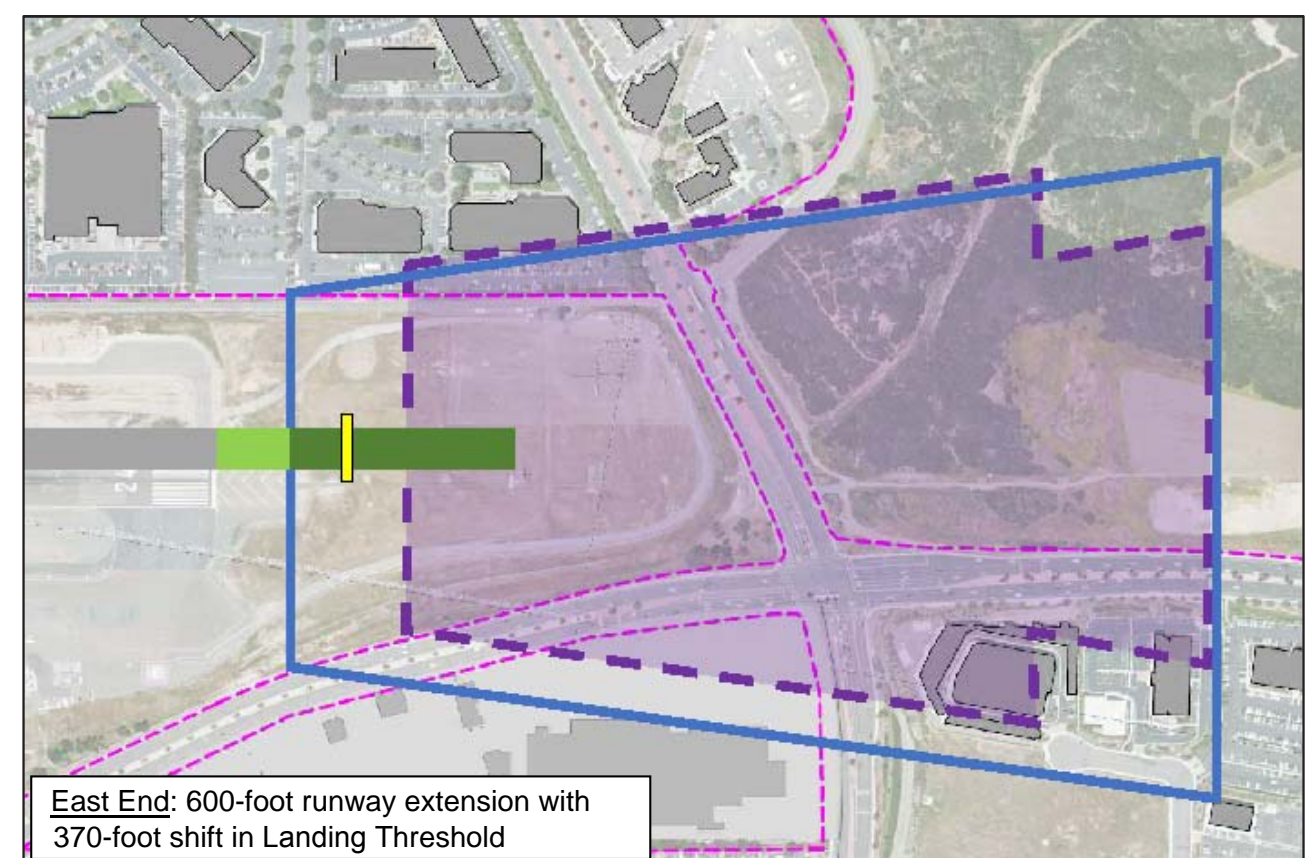
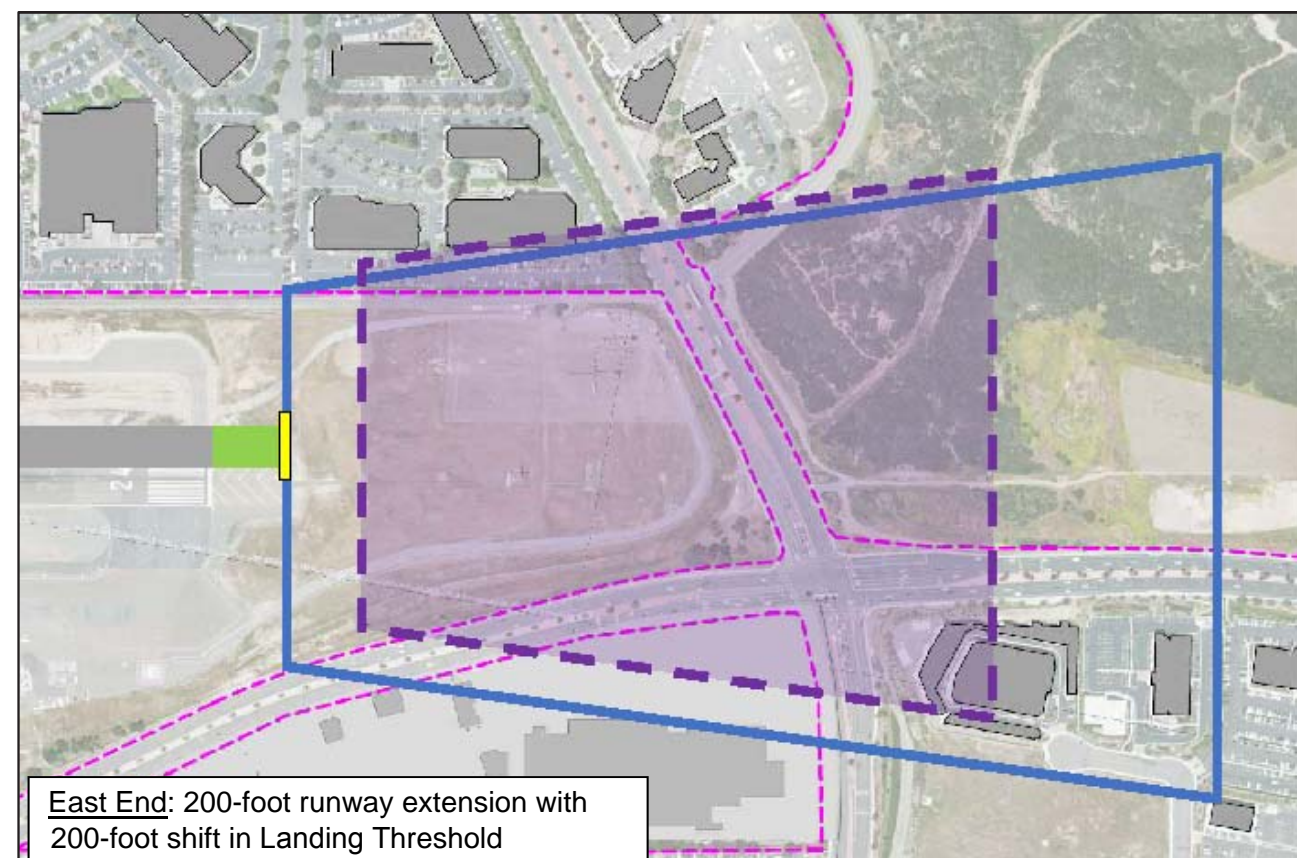
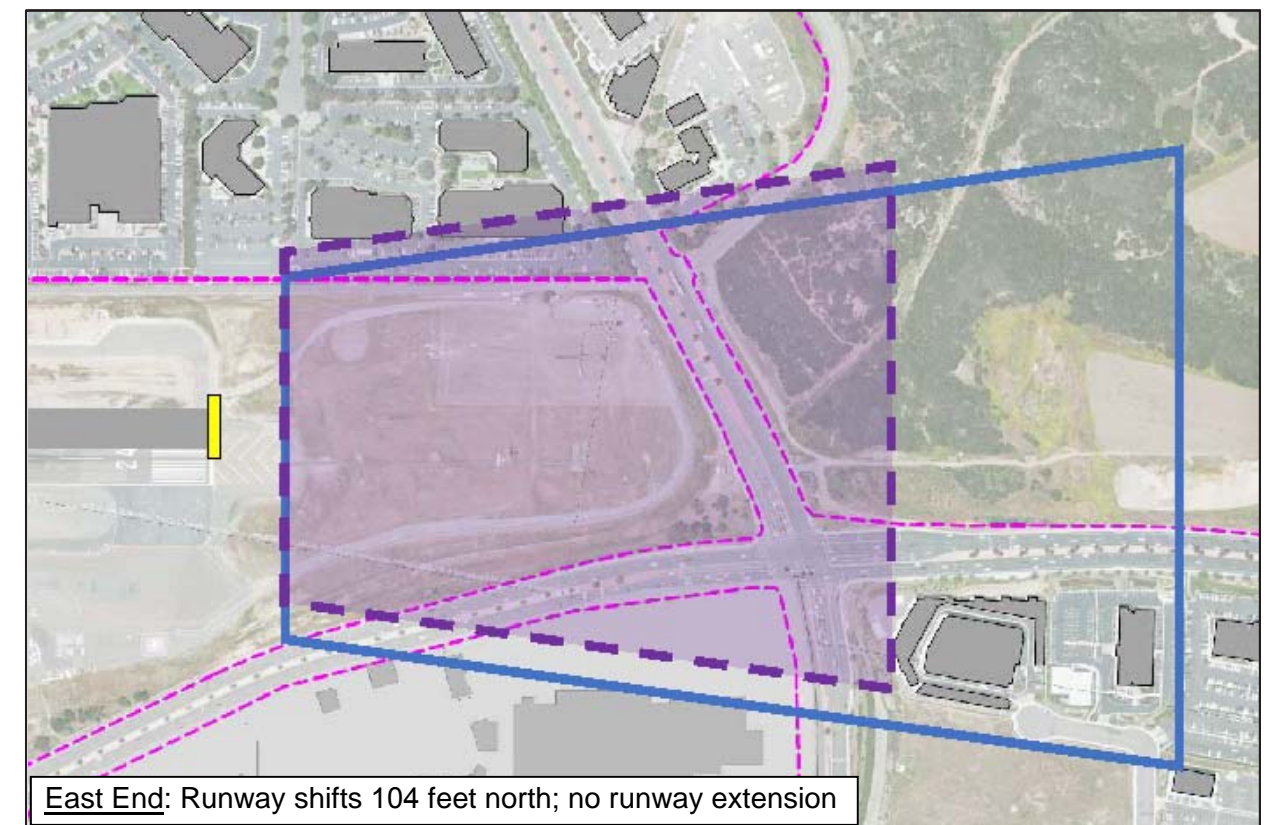
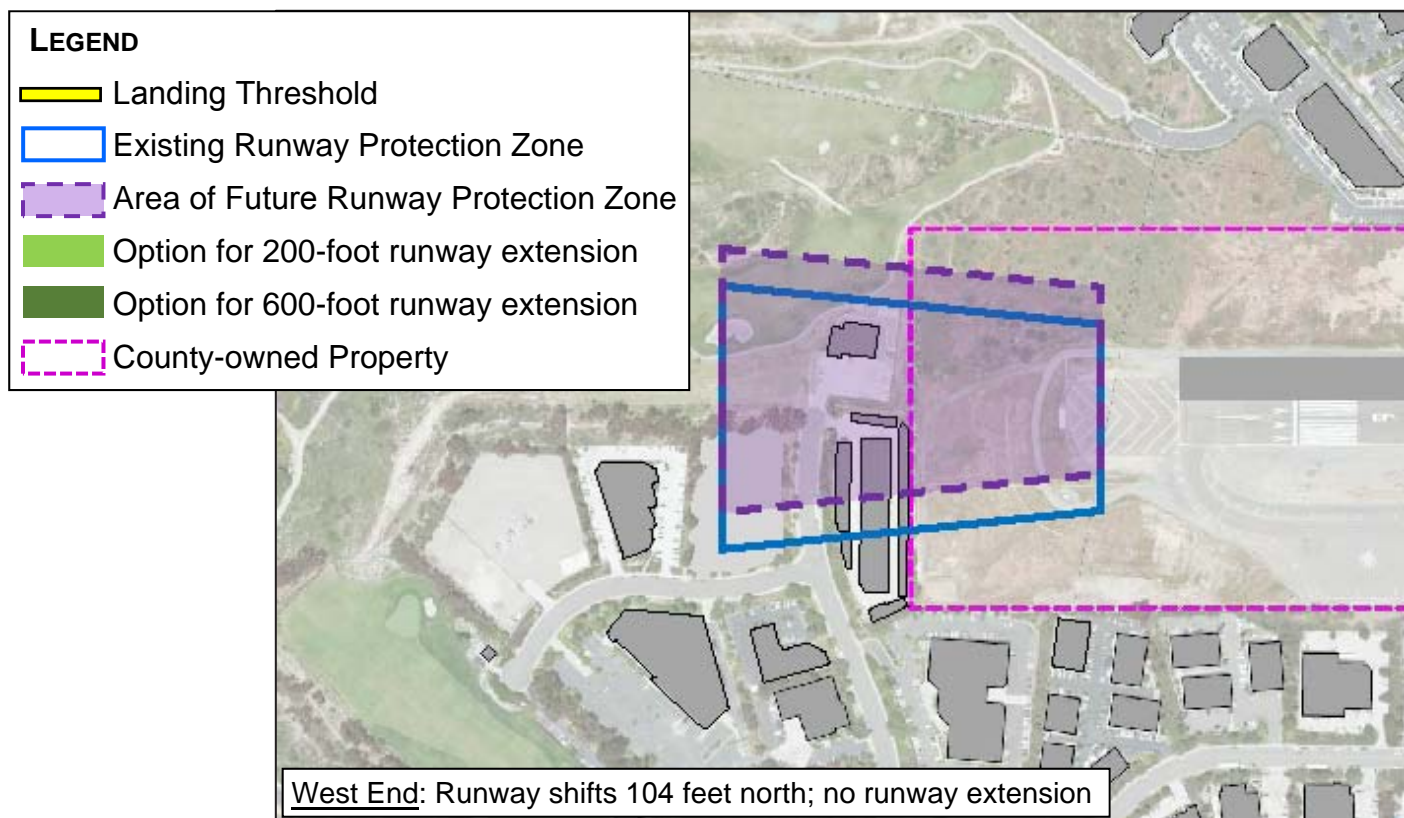




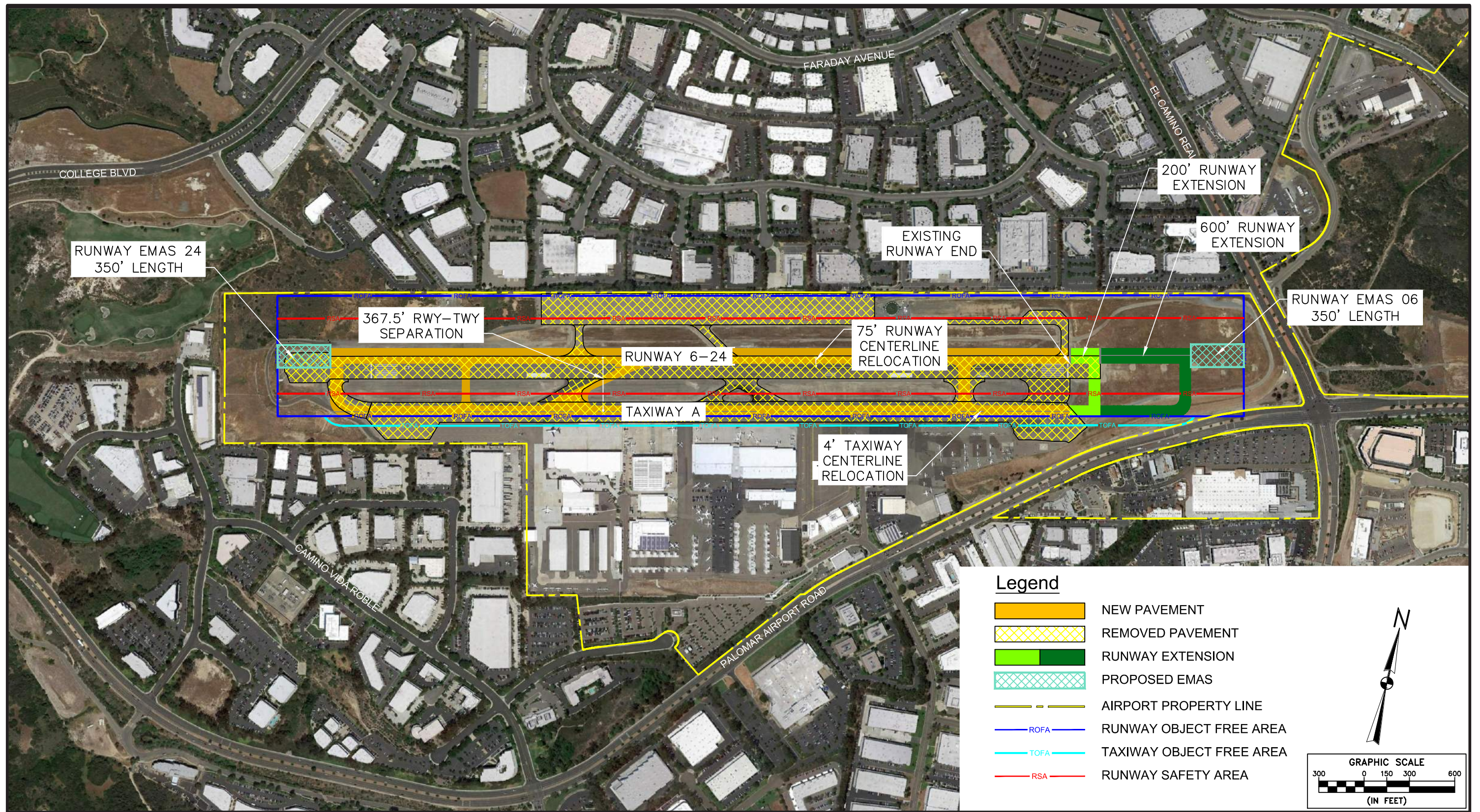


Source: Kimley-Horn 2017

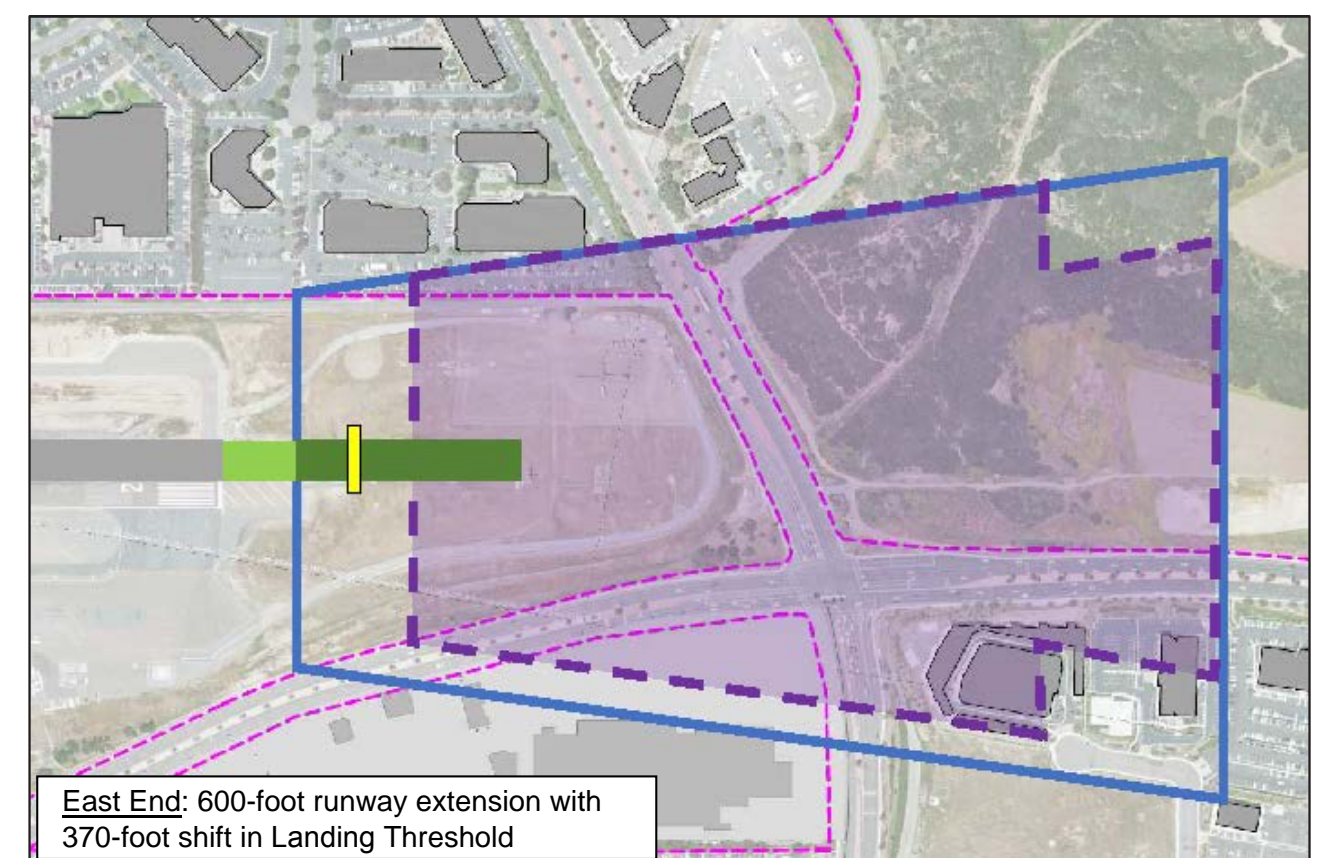
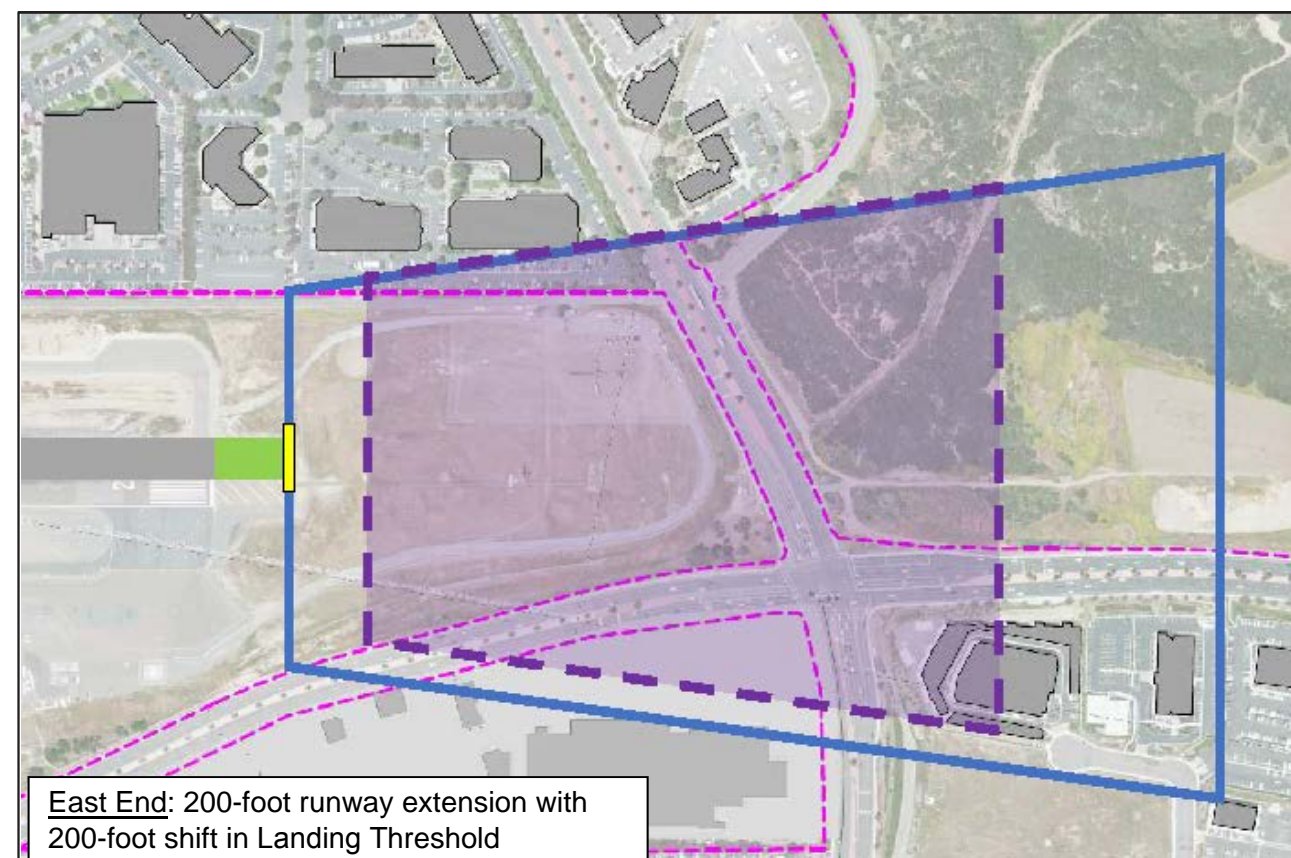
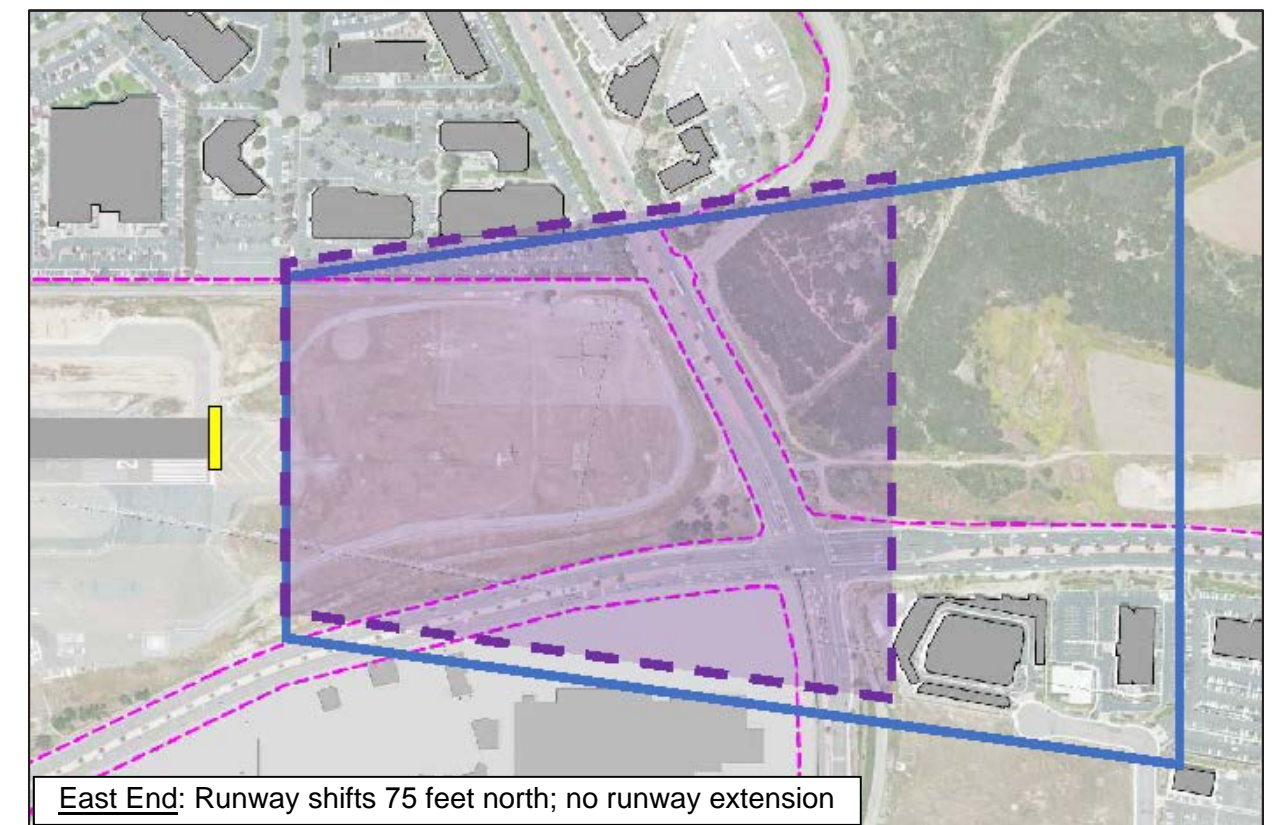
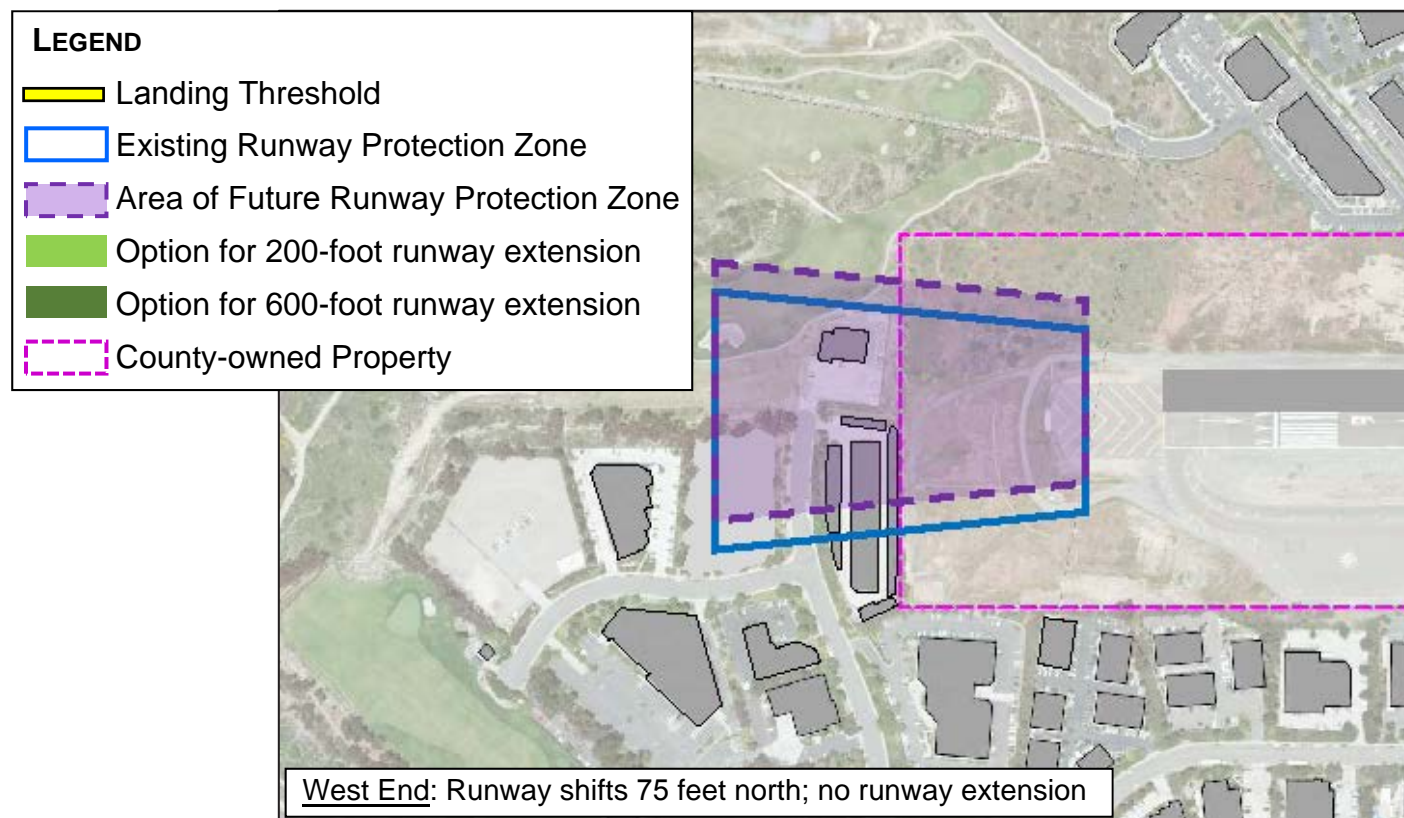








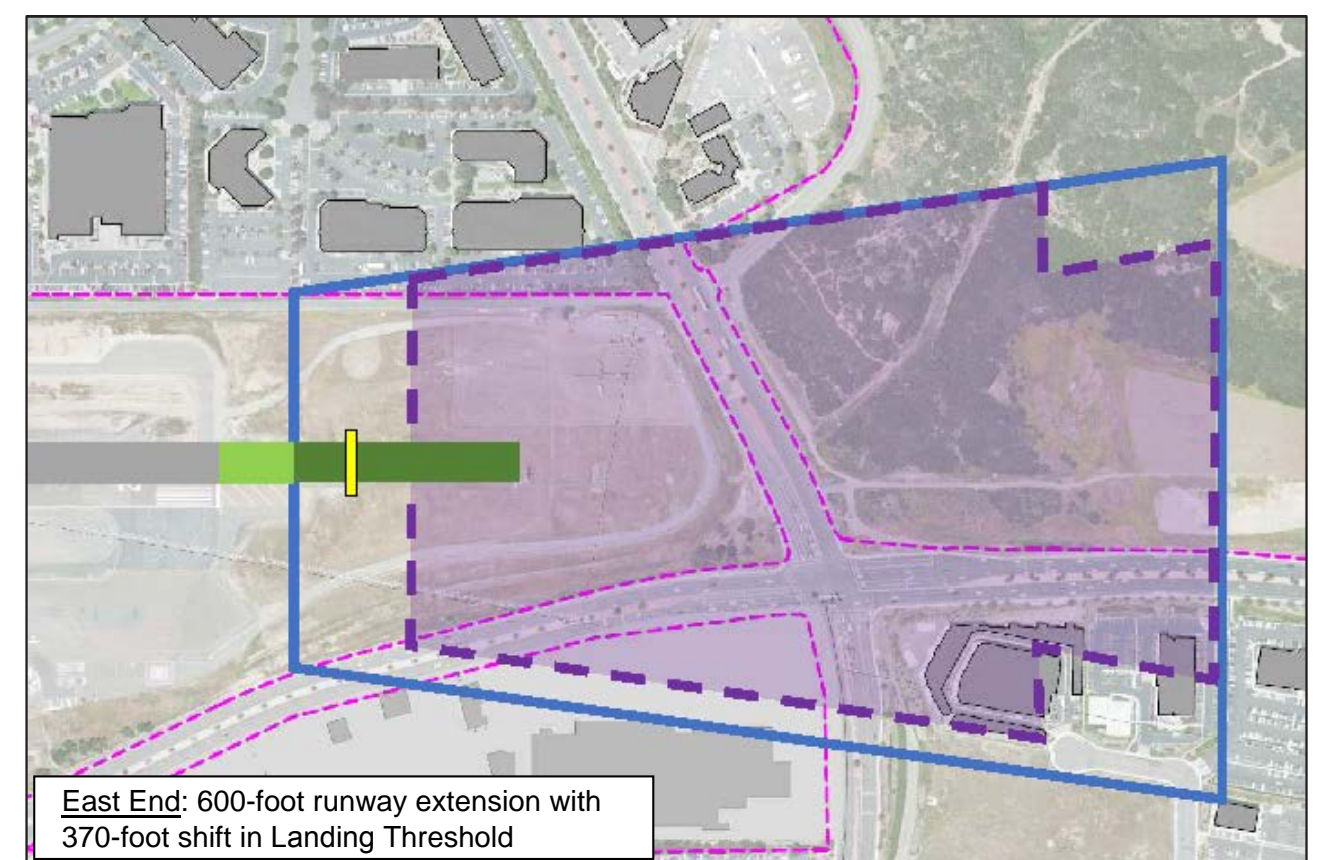
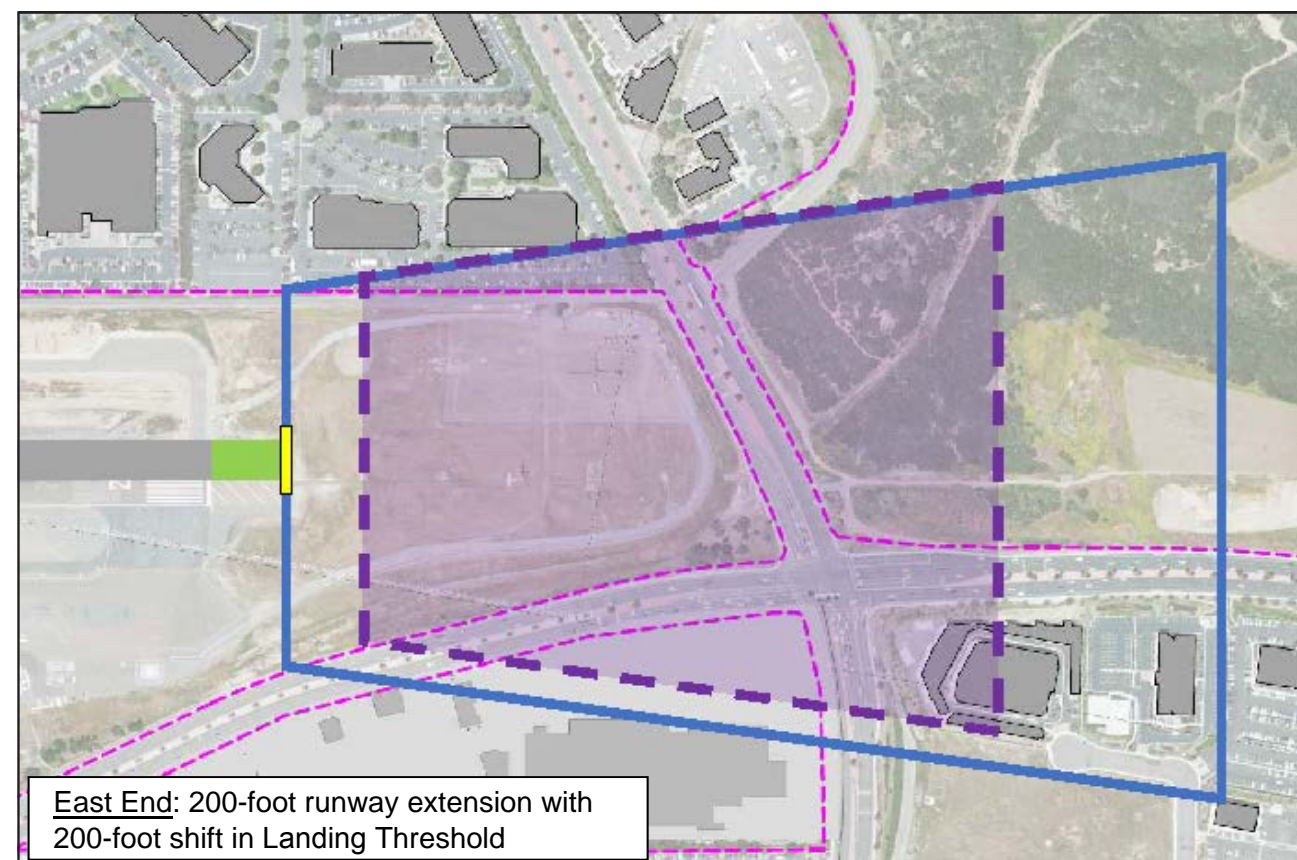
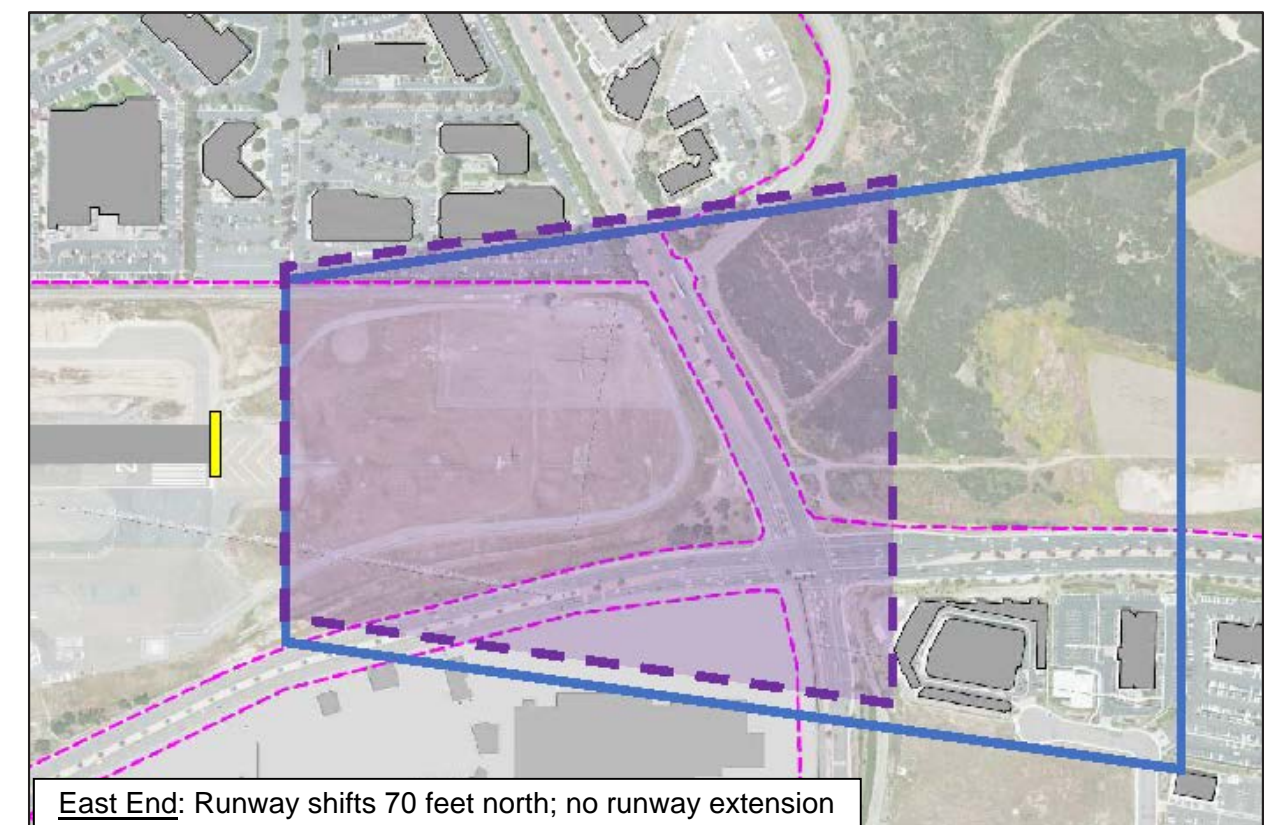
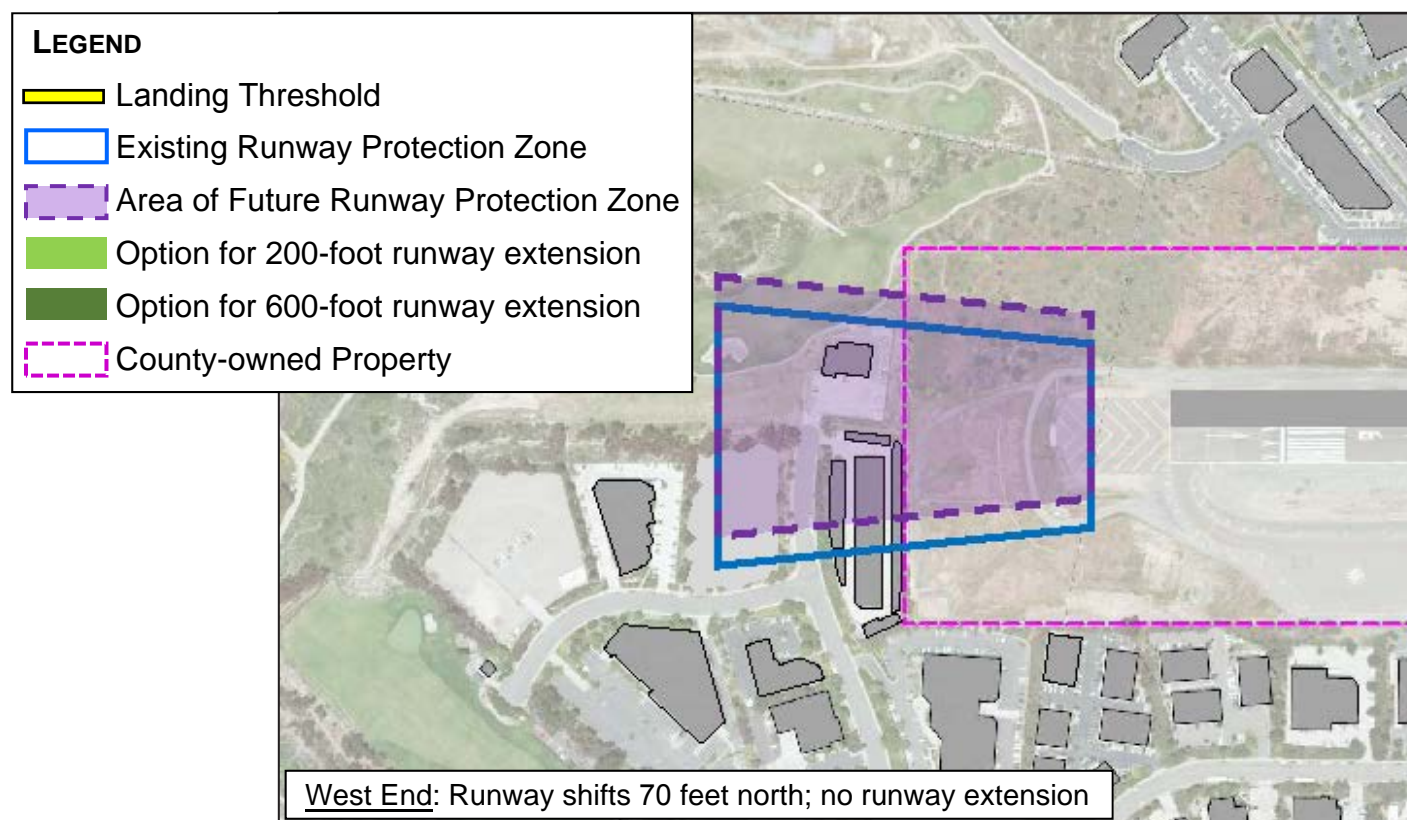










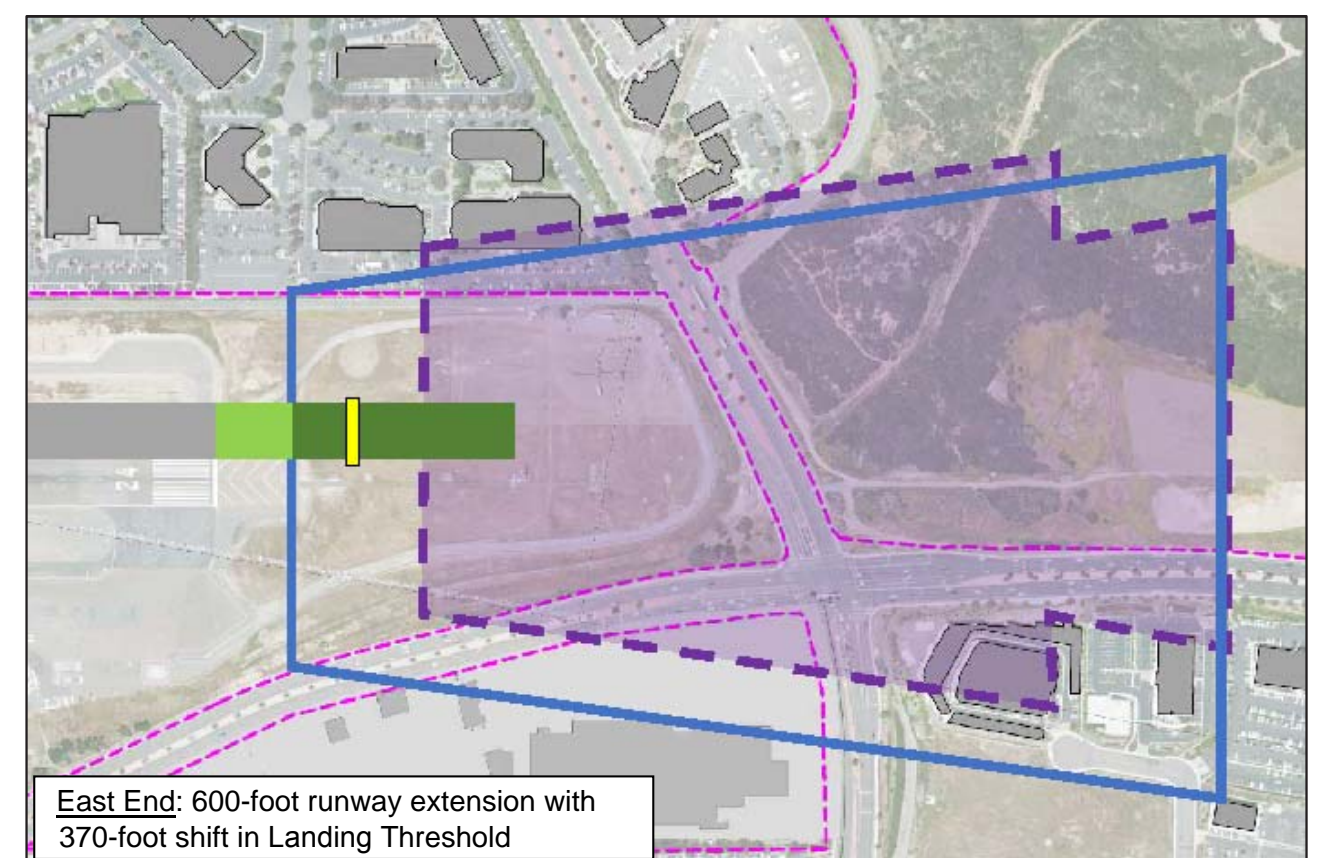
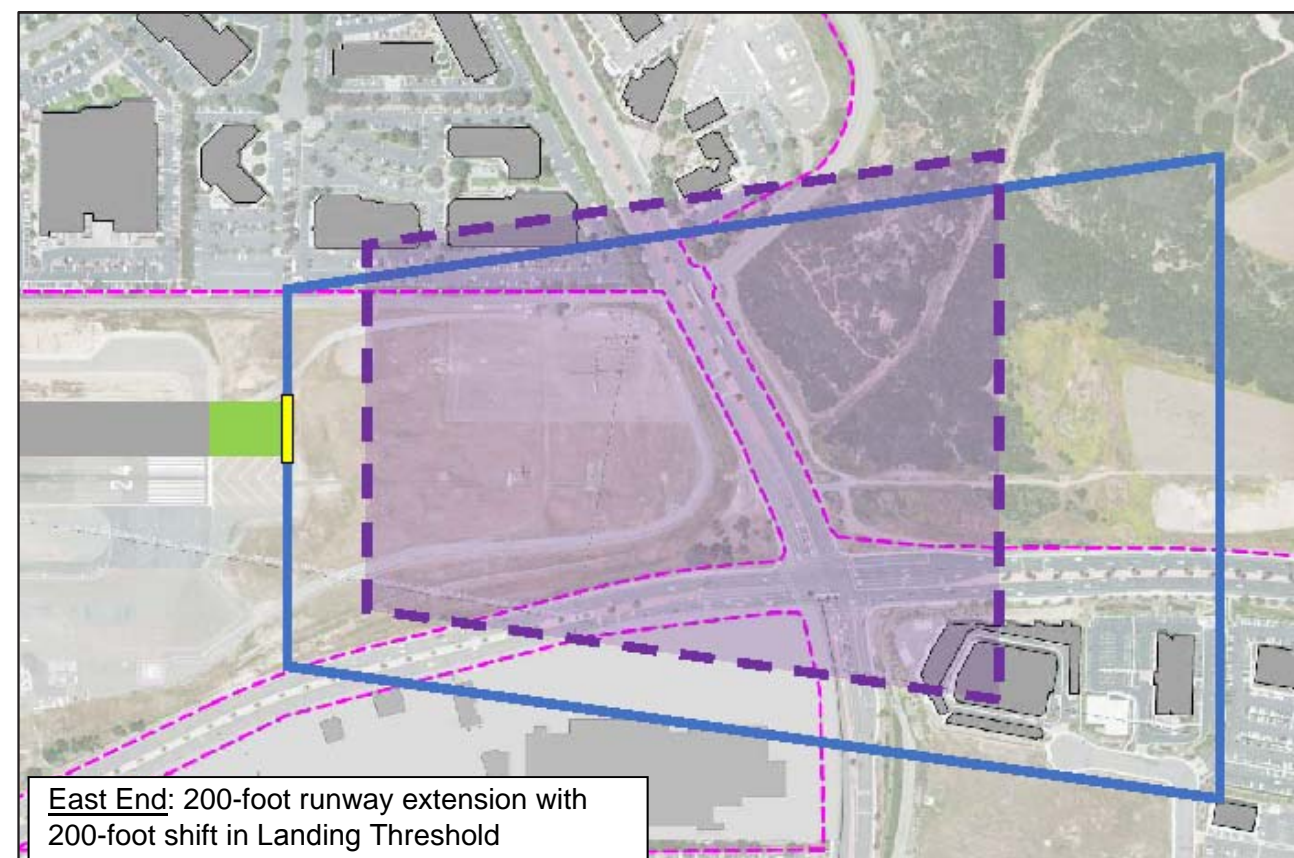
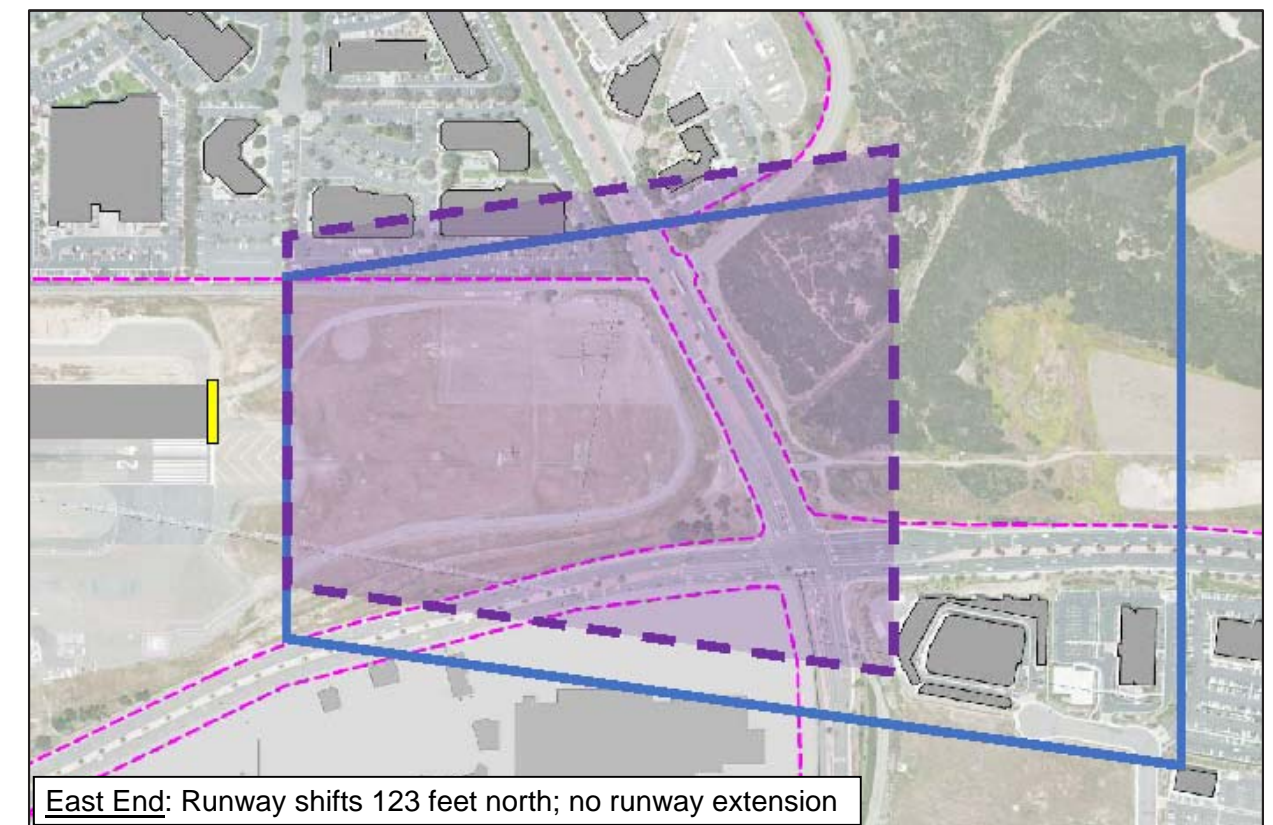
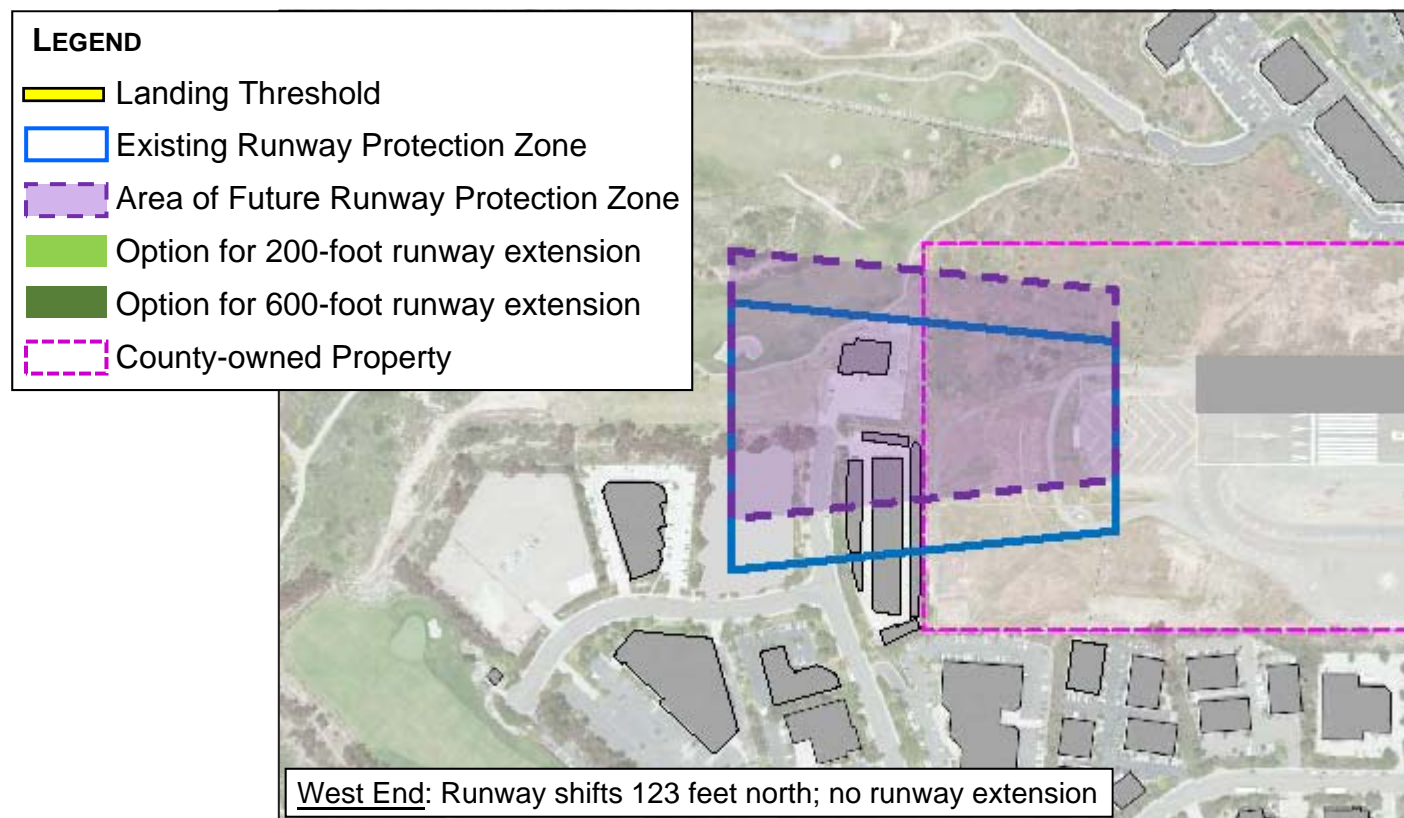






Source: Kimley-Horn 2017












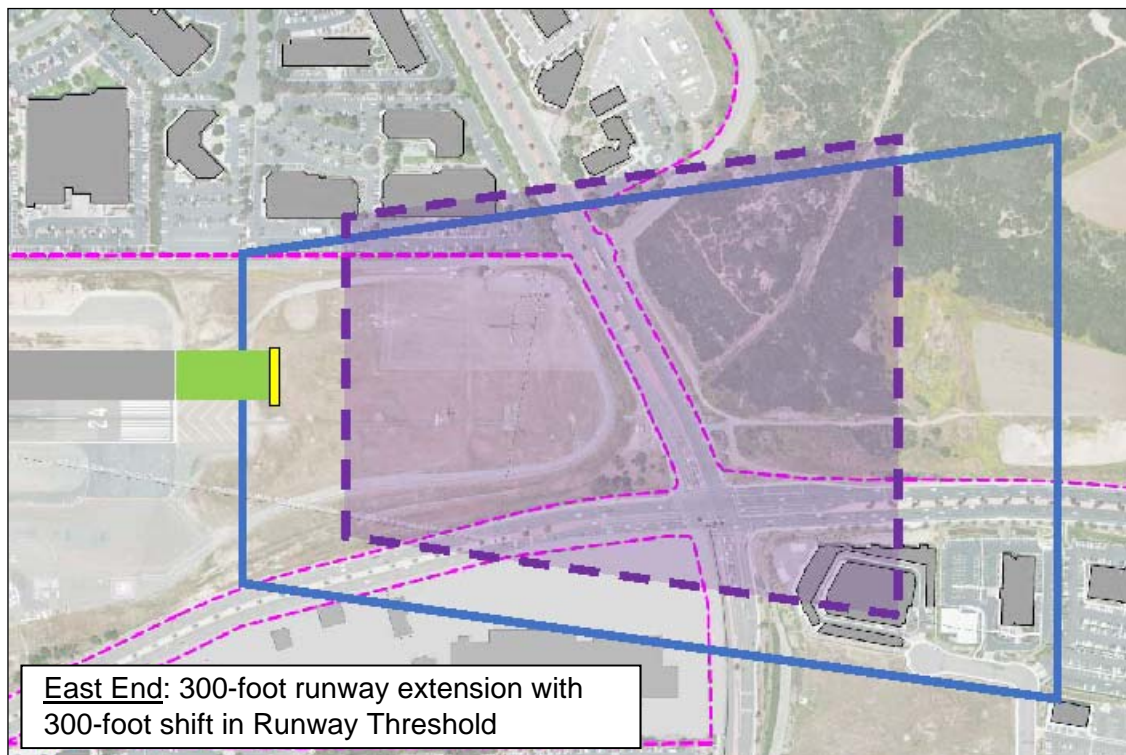
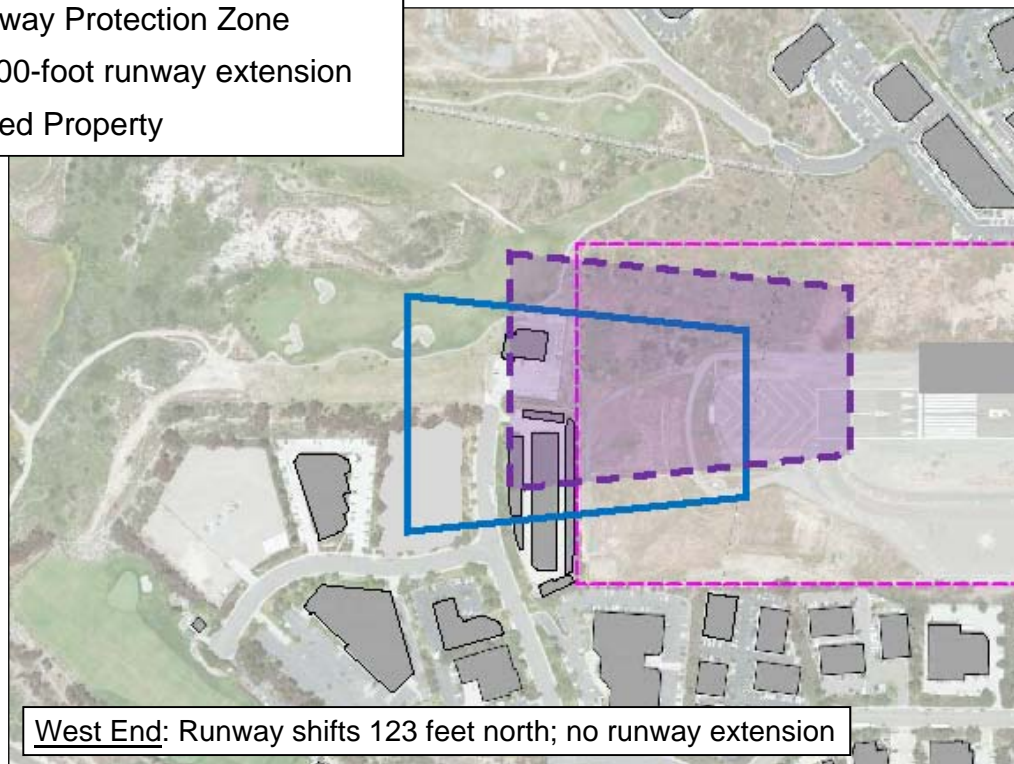


Source: Kimley-Horn 2017



**LEGEND**

-  Runway Threshold
-  Existing Runway Protection Zone
-  Area of Runway Protection Zone
-  Option for 300-foot runway extension
-  County-owned Property



**Public Comment Alternative**  
**Runway Protection Zones**