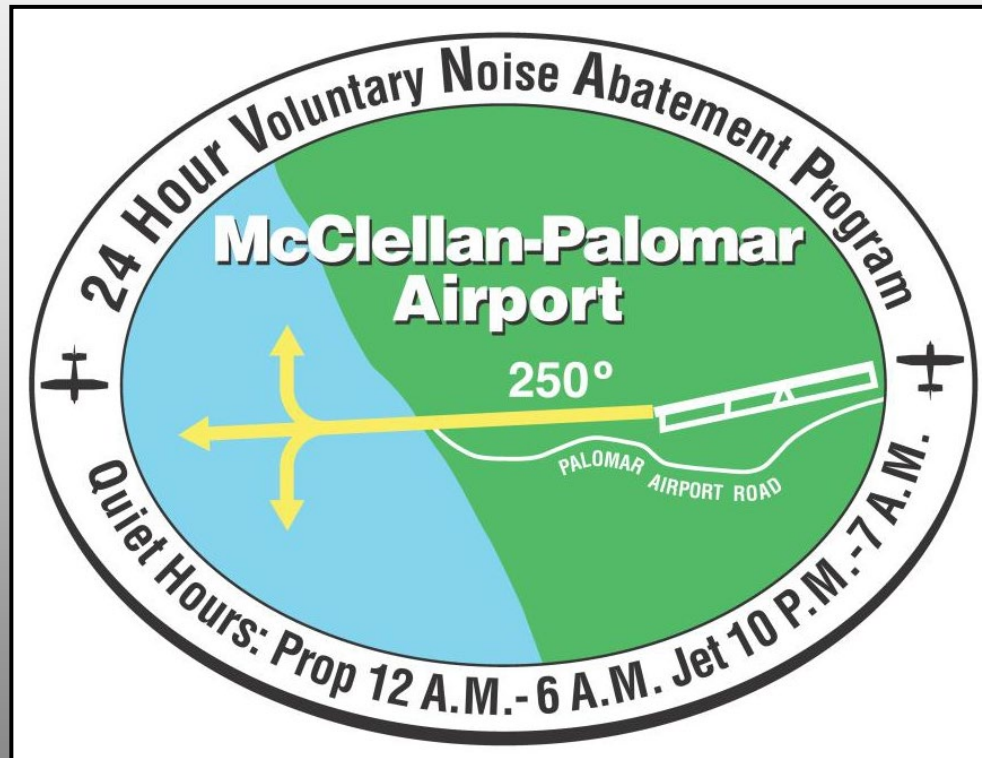


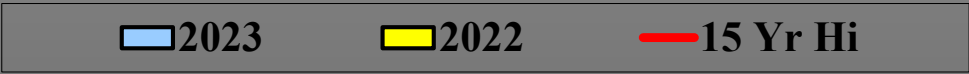
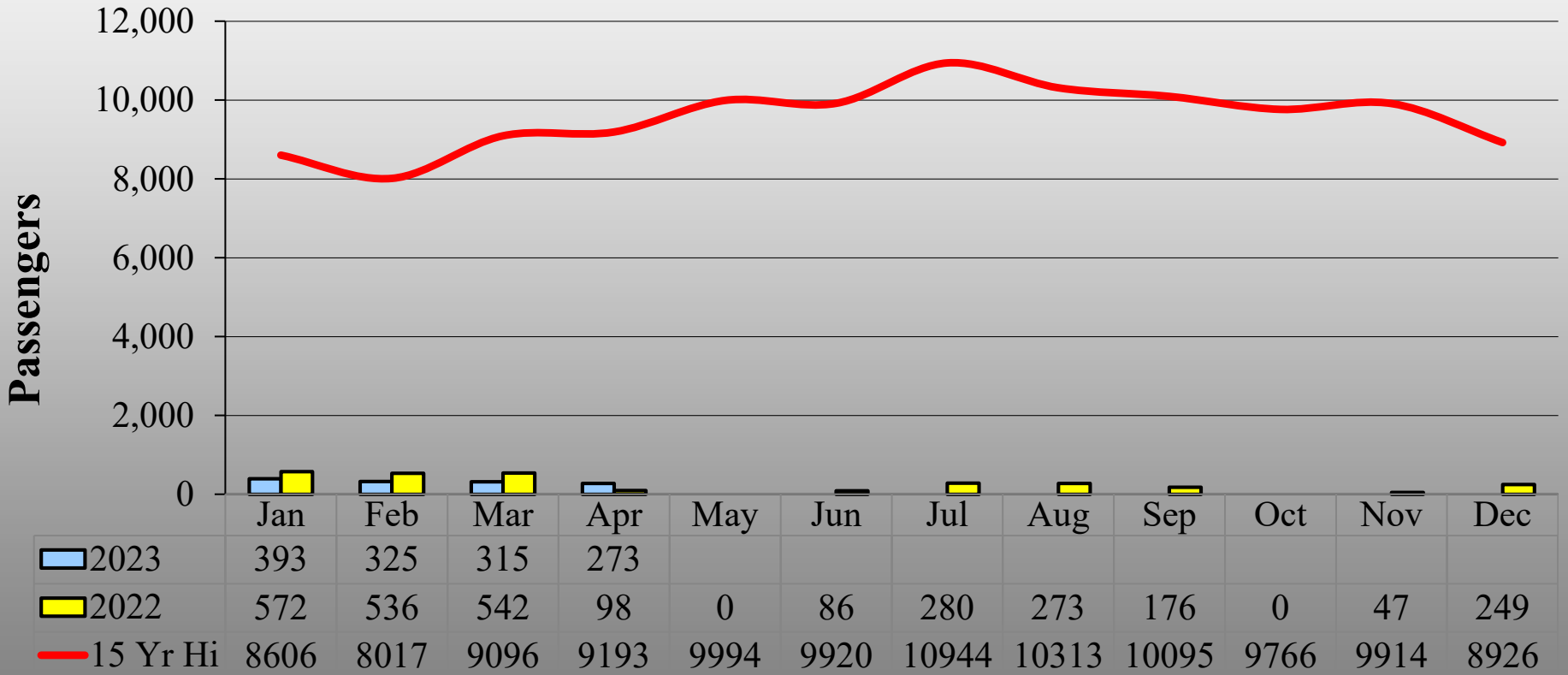
McClellan-Palomar Airport Monthly Airport Performance Report



April 2023



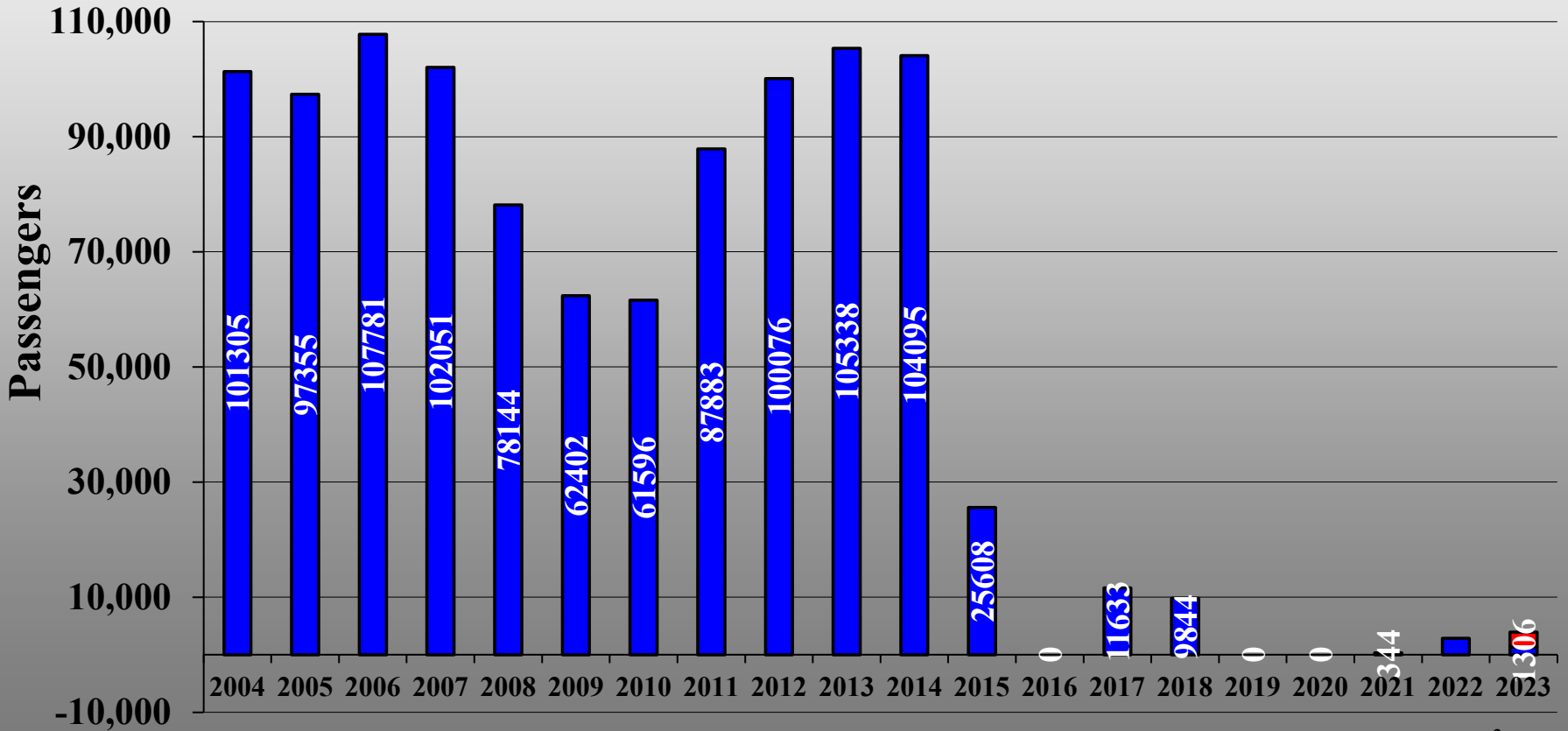
Monthly Enplanements





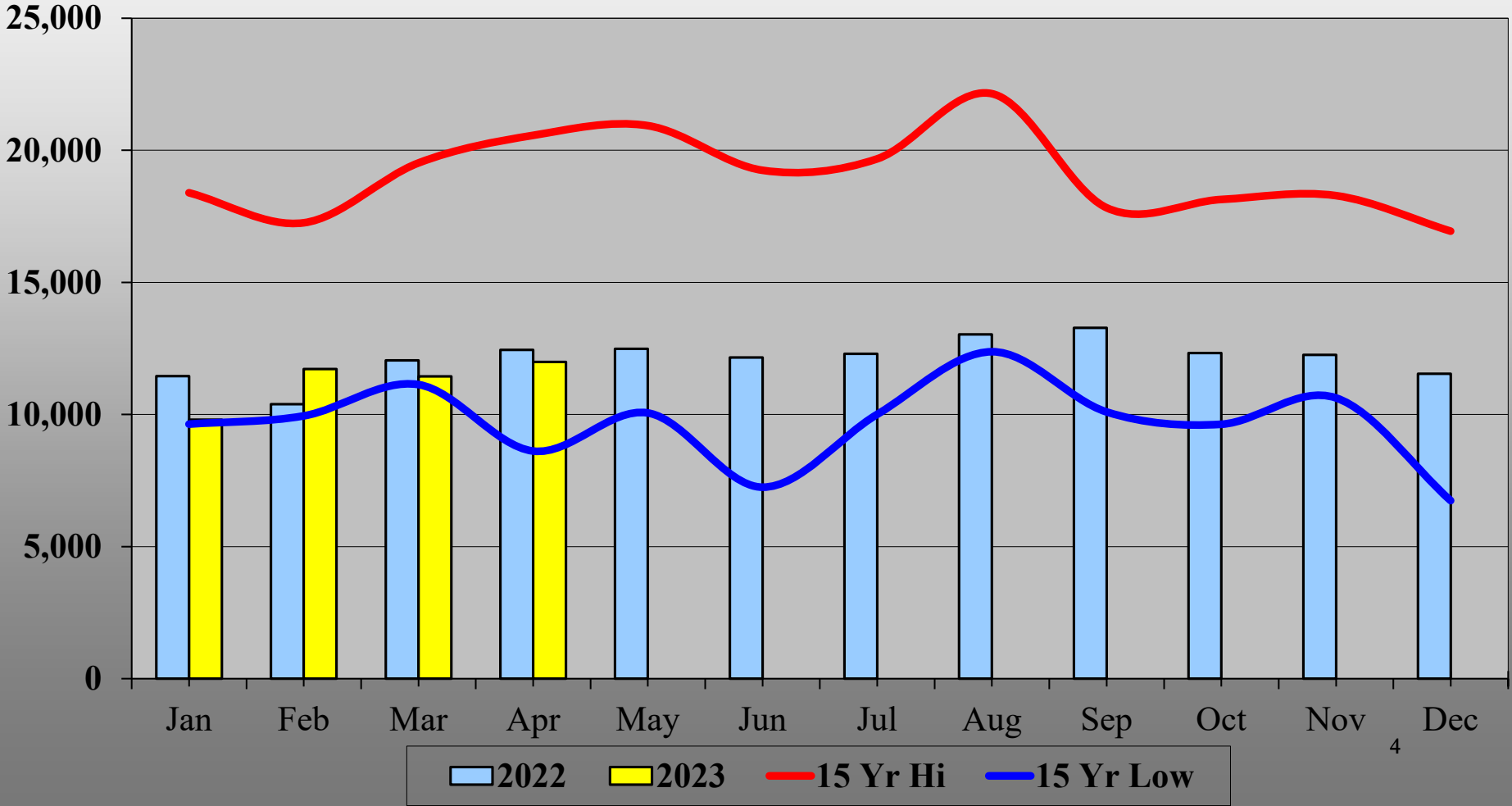
Annual Enplanements

■ Actual ■ Projected





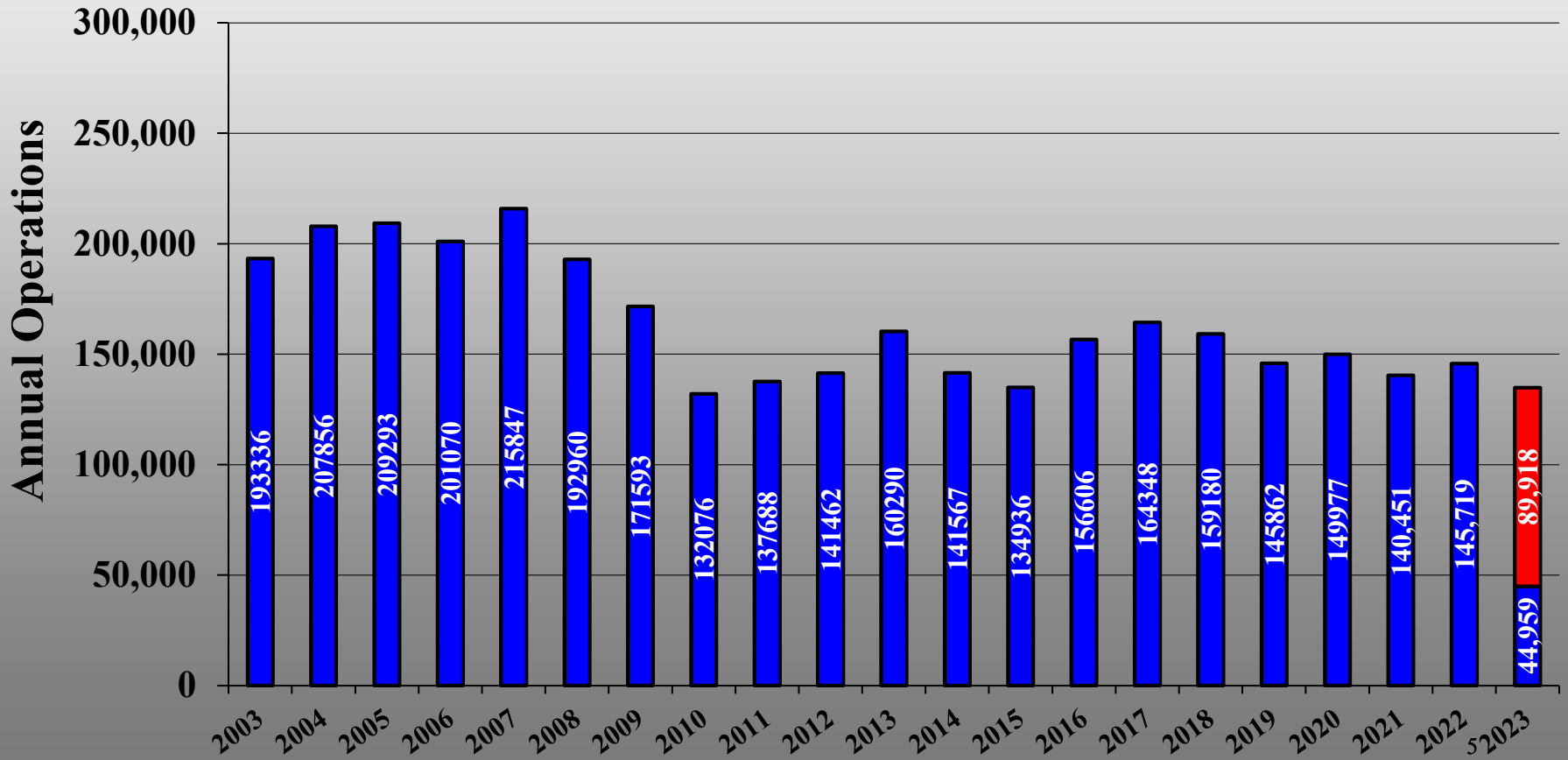
Monthly Take-Off & Landing Count





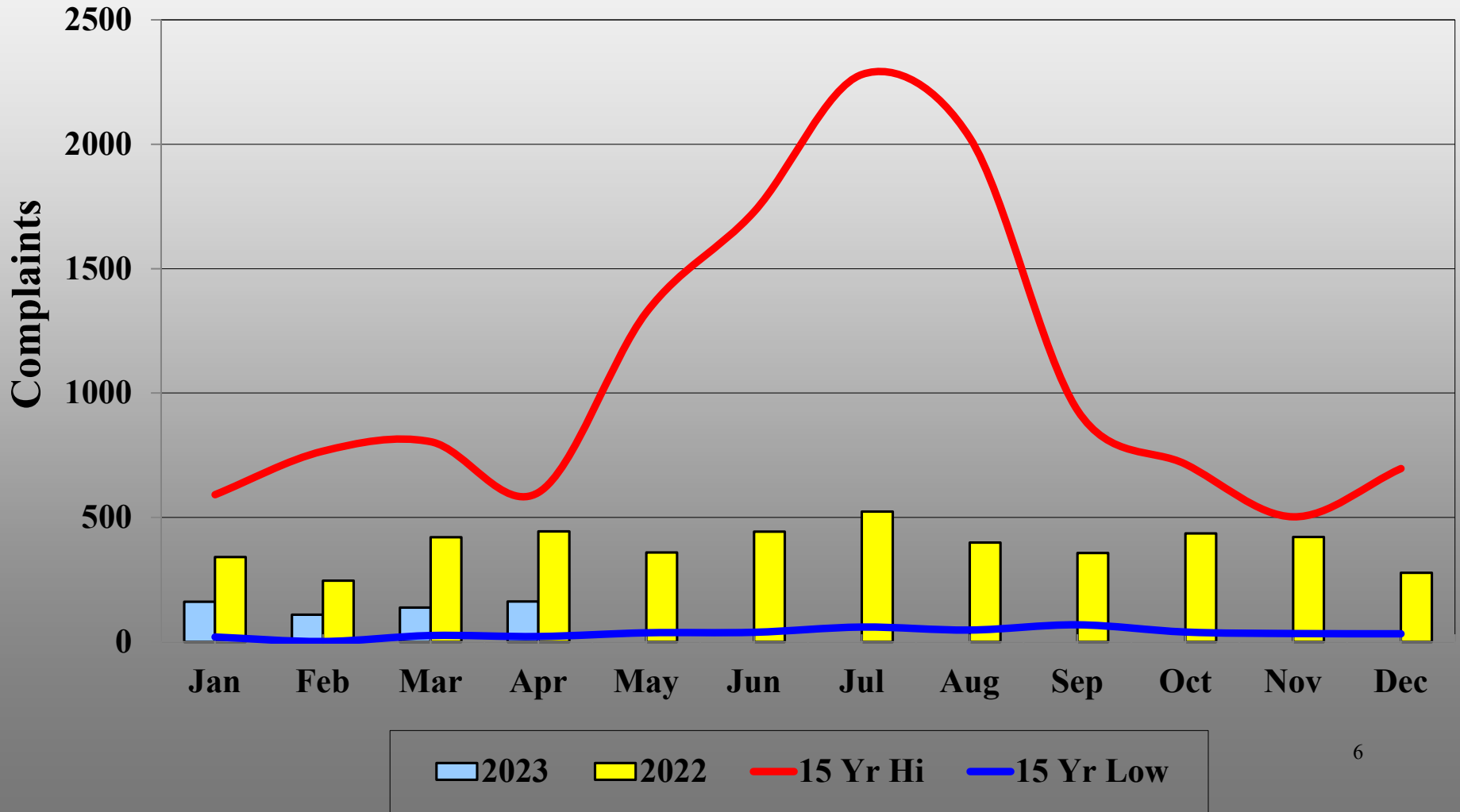
Annual Take-Off & Landing Count

■ Actual
 ■ Projected

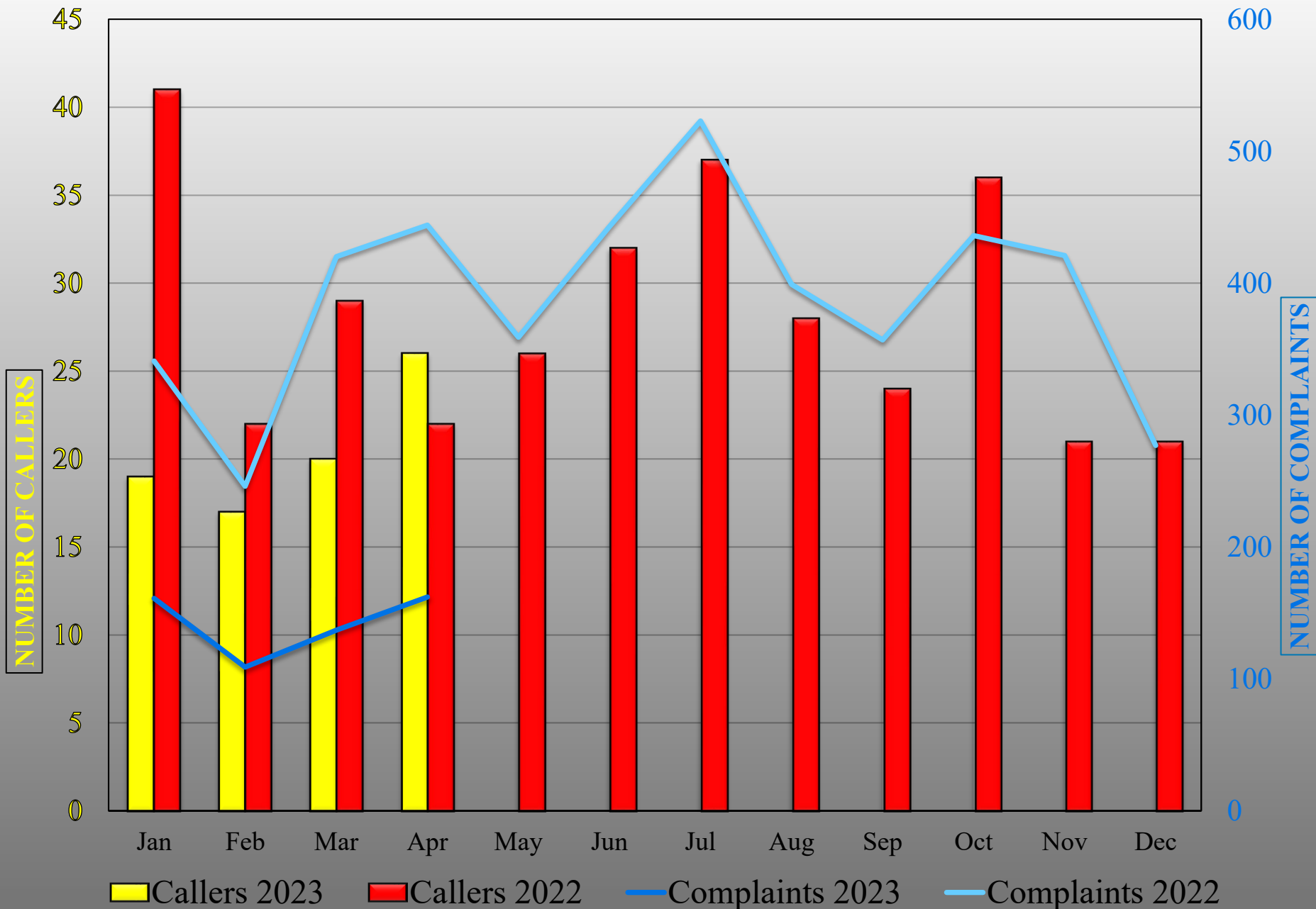




Total Monthly Complaints



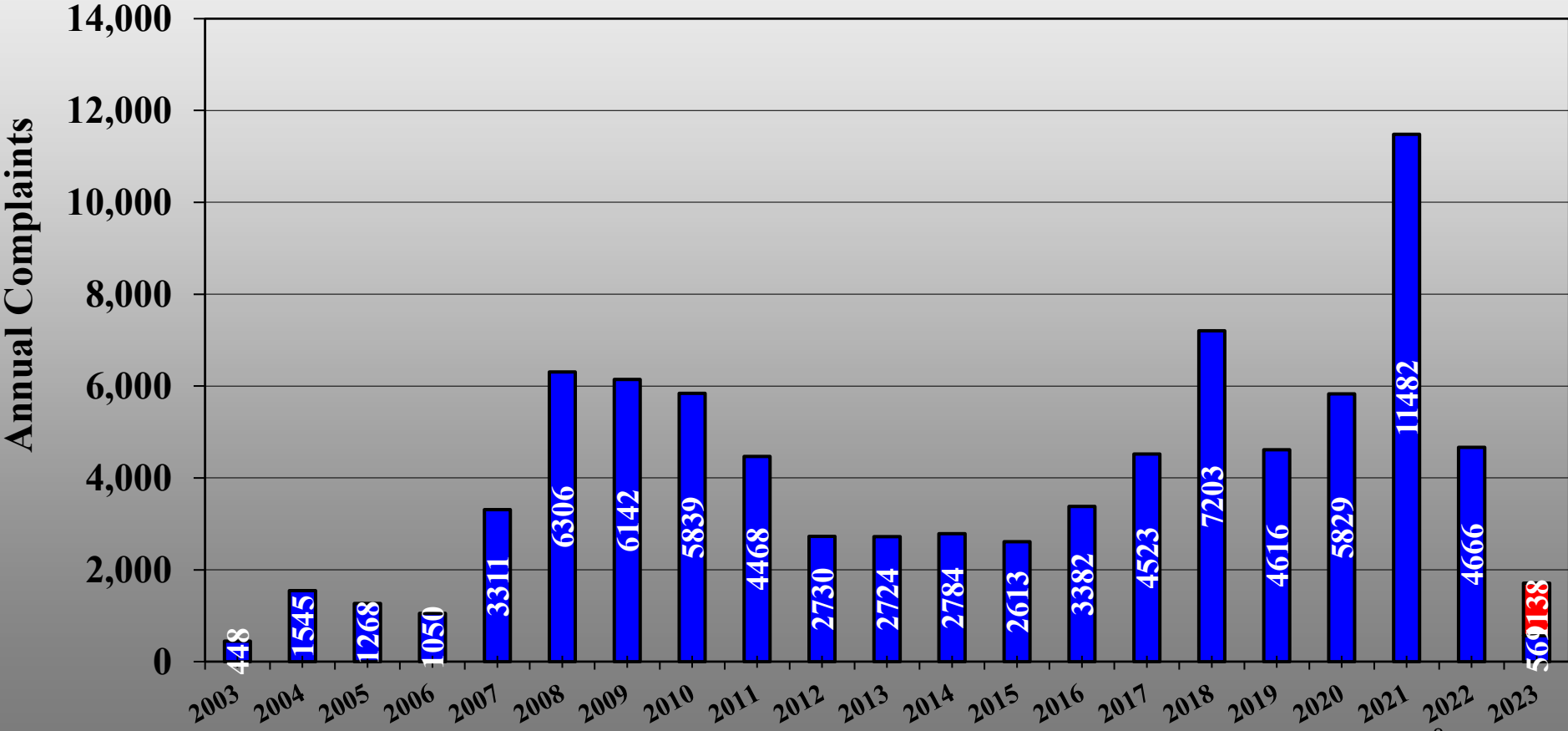
Callers & Complaints





Annual Complaints

■ Actual
 ■ Projected





Complaints by Quadrant

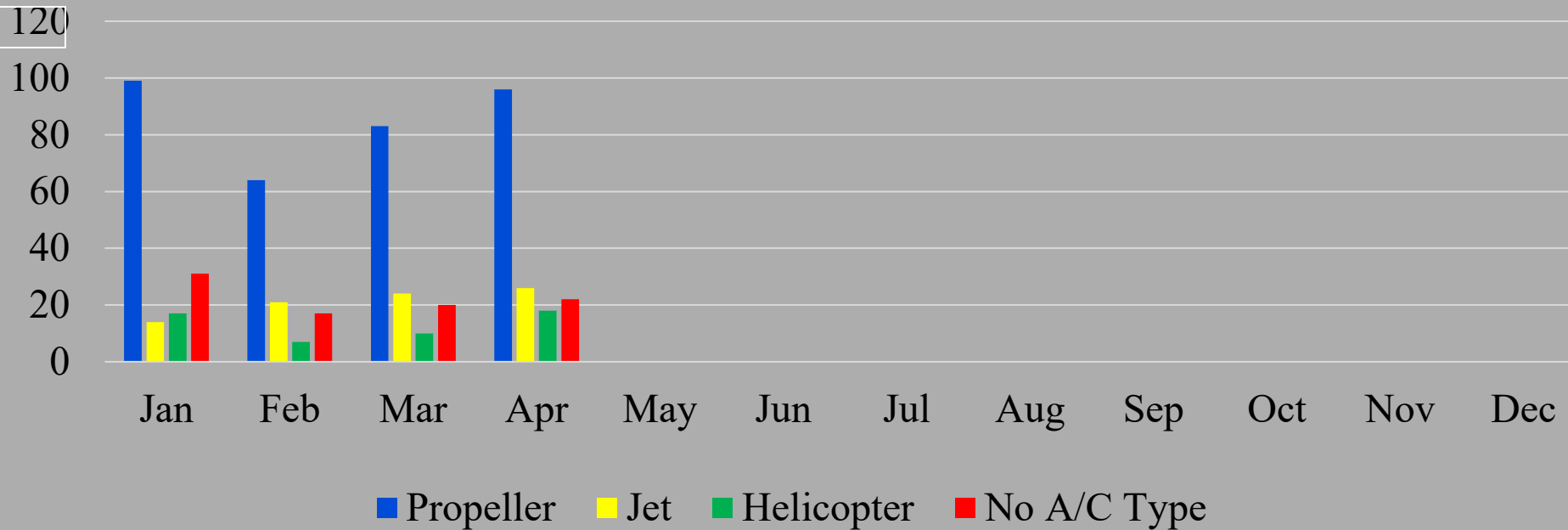
	Total Callers	Total Complaints	Filtered* Complaints
NW	3	52	20
SW	9	77	24
SE	10	18	18
NE	4	15	12
Total	26	162	74

74% of complaints were from 3 callers.

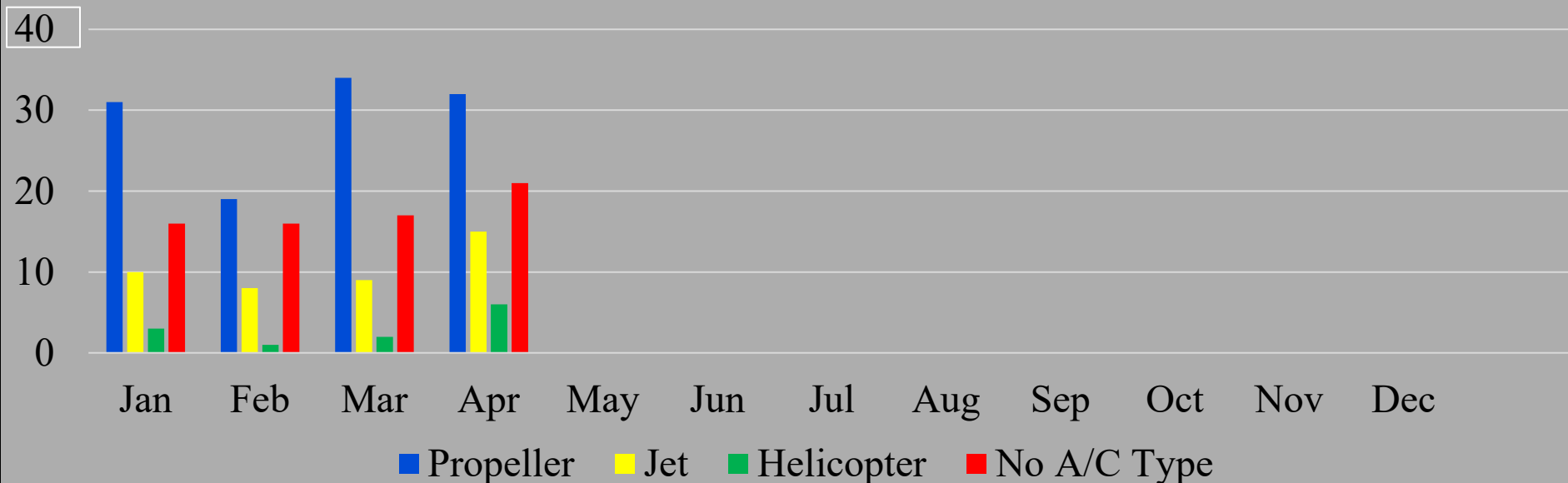
*In the filtered data set, the top 3 caller's complaints were reduced to the average number of complaints reported by the other callers.

** 0 complaints from 0 caller was not included. **

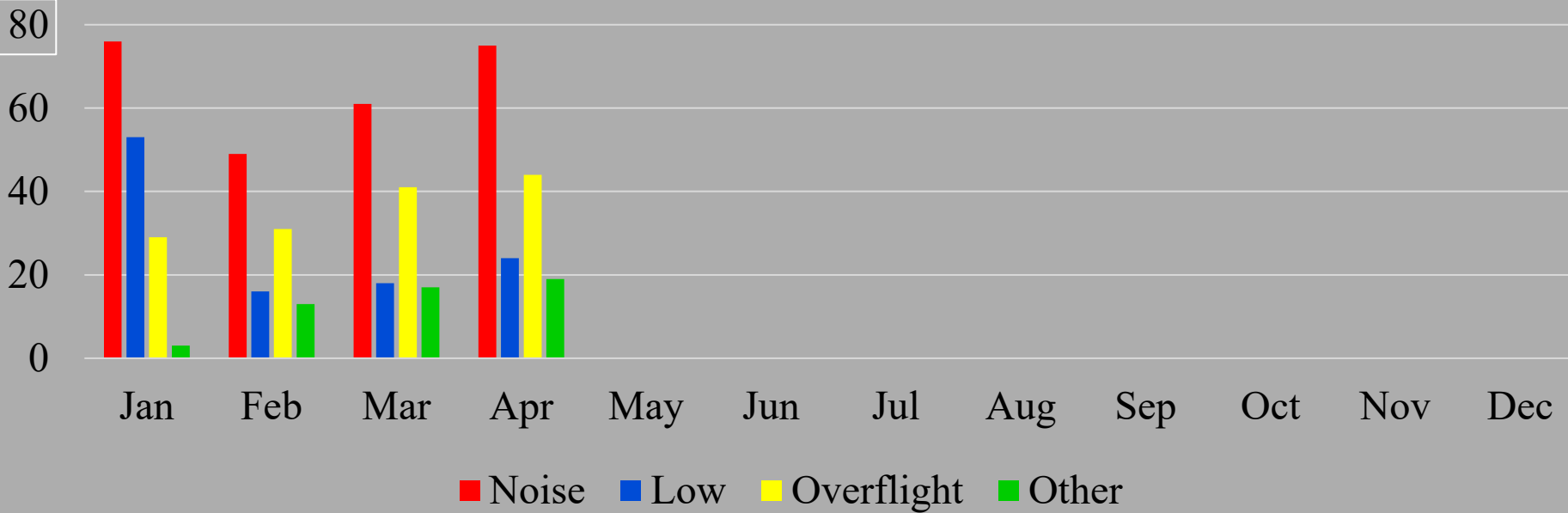
Complaints by Aircraft Type - All Data



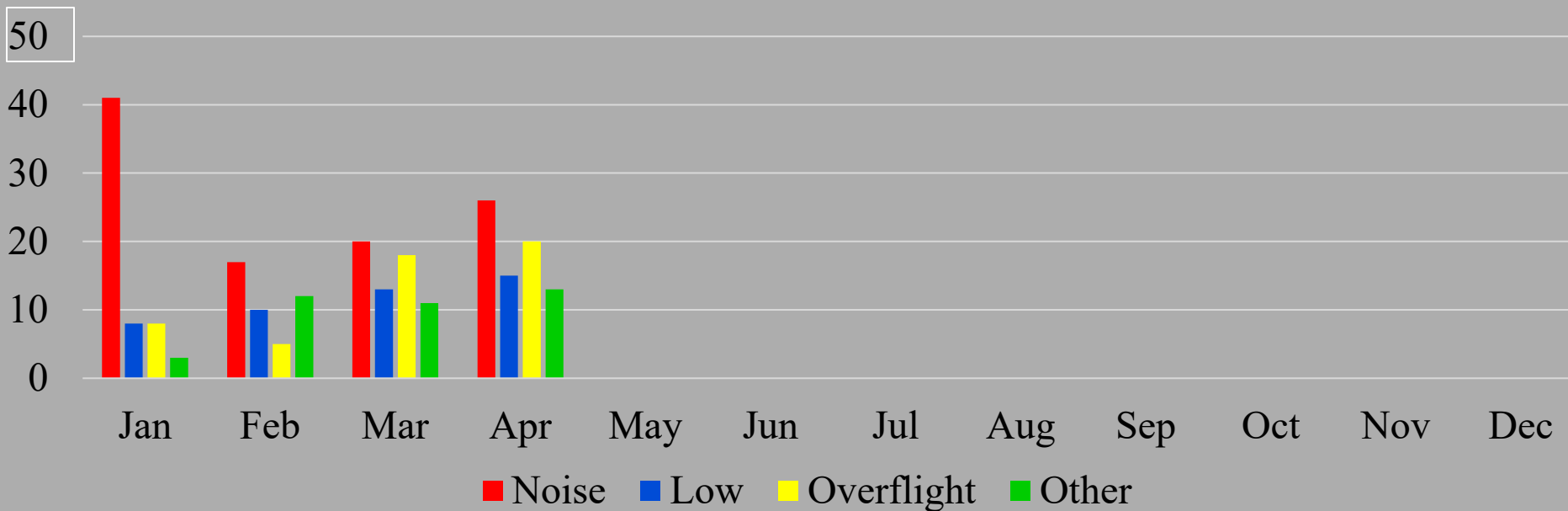
Complaints by Aircraft Type - Filtered Data



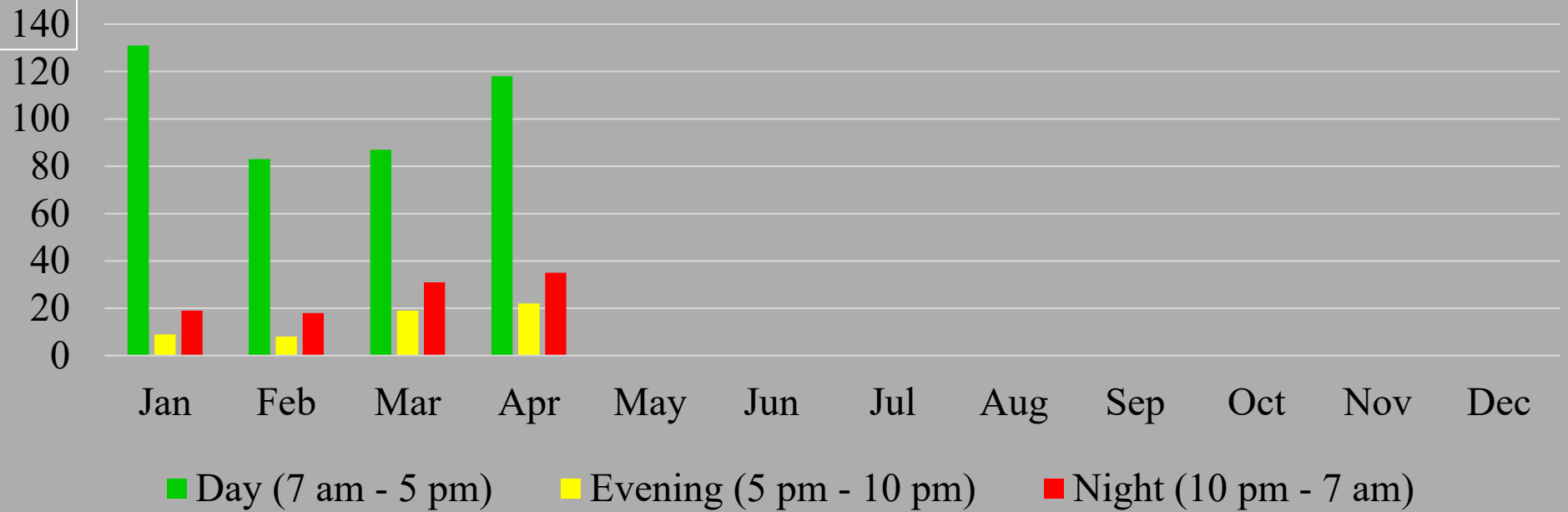
Complaints by Category - All Data



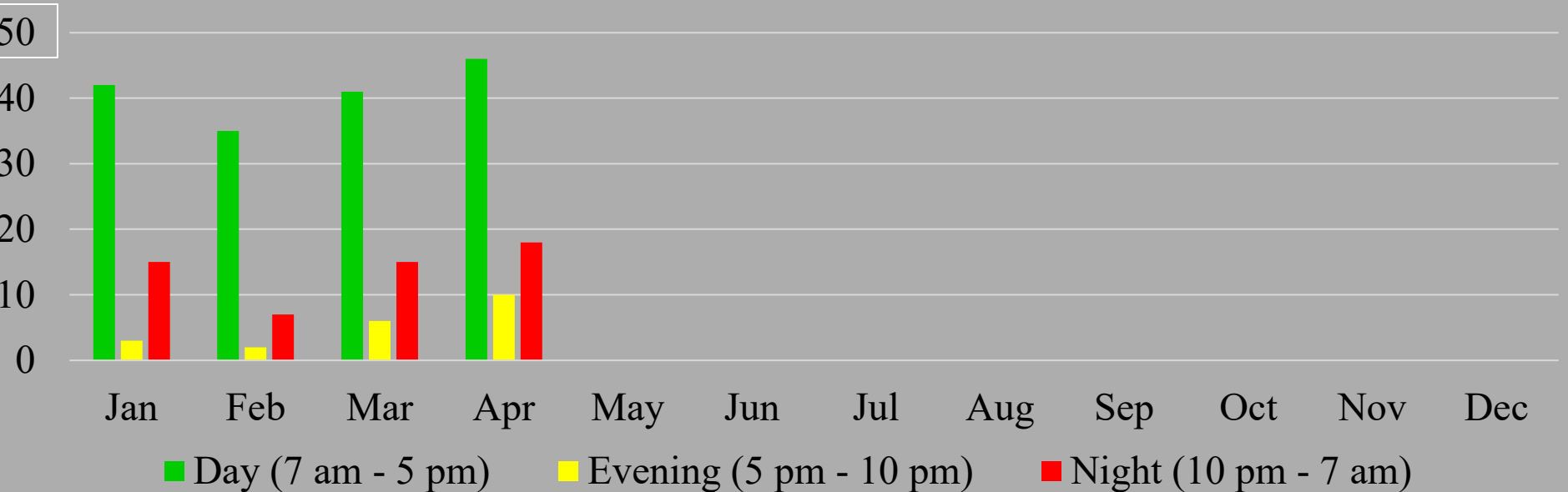
Complaints by Category - Filtered Data



Complaints by Time of Day - All Data



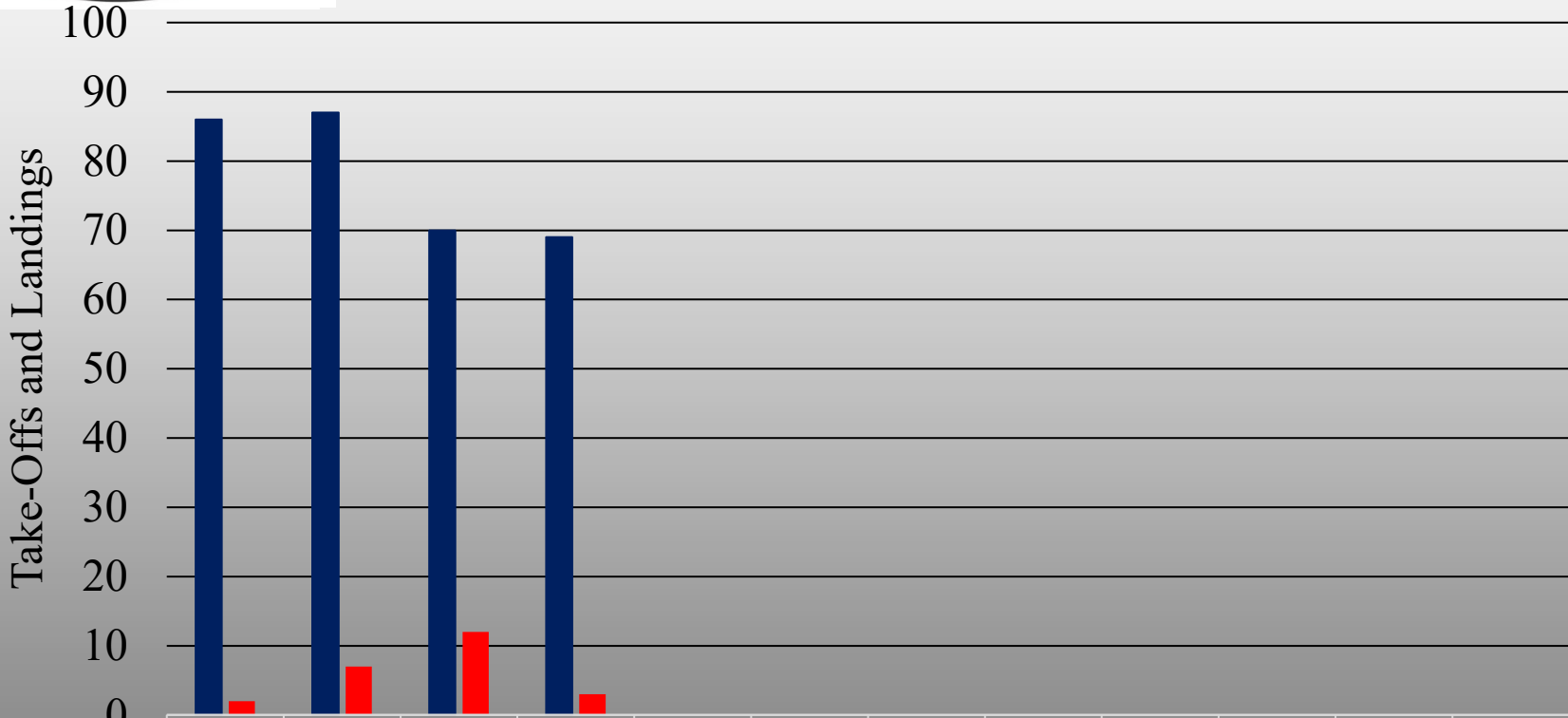
Complaints by Time of Day - Filtered Data





Flights During Voluntary Quiet Hours

Jets 10:00pm-7:00am, Props 12:00am-6:00am

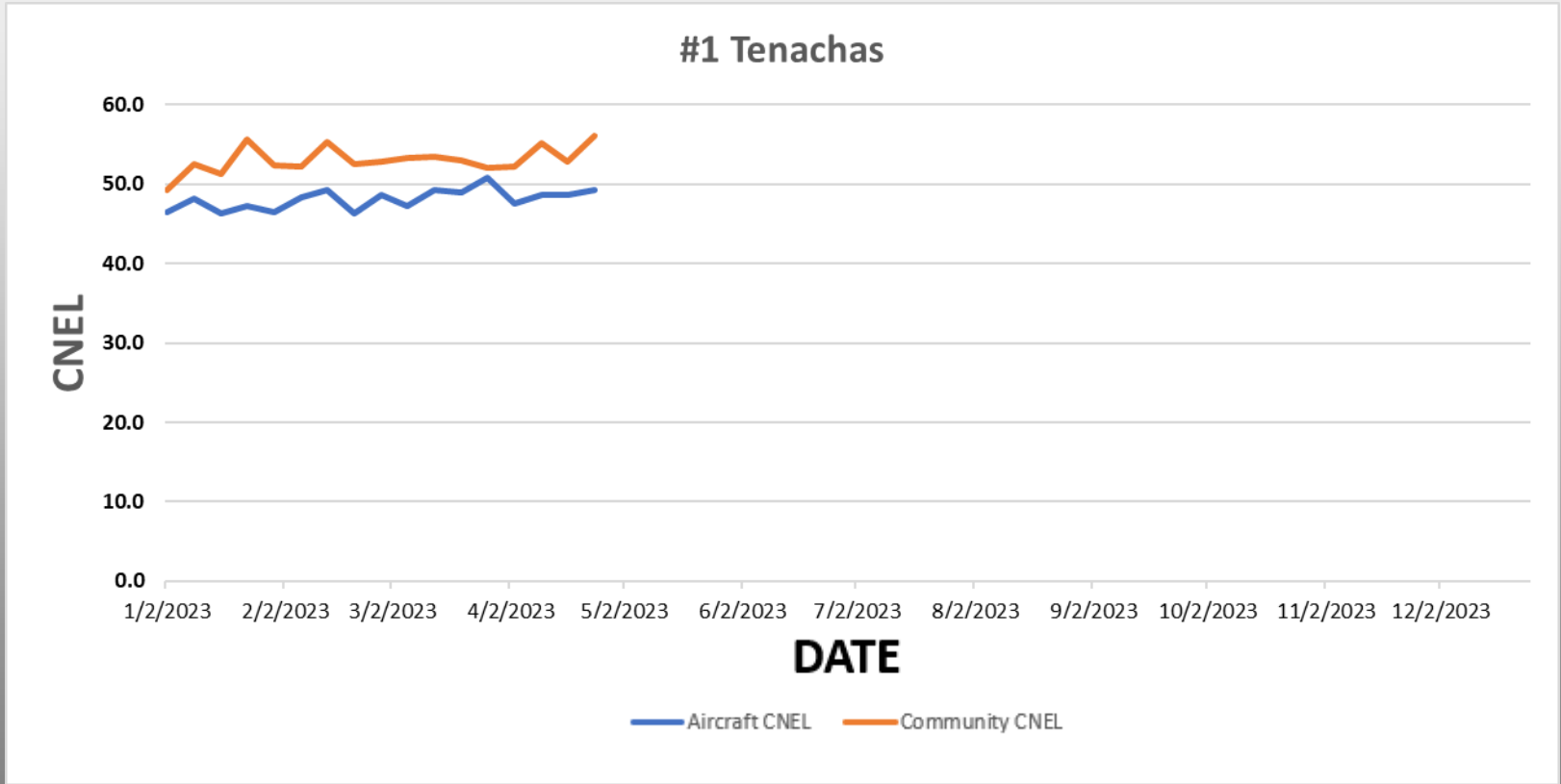


	Jan	Feb	Mar	Apr	May	Jun	Jul	Aug	Sep	Oct	Nov	Dec
■ Jet	86	87	70	69								
■ Propeller	2	7	12	3								

■ Jet ■ Propeller

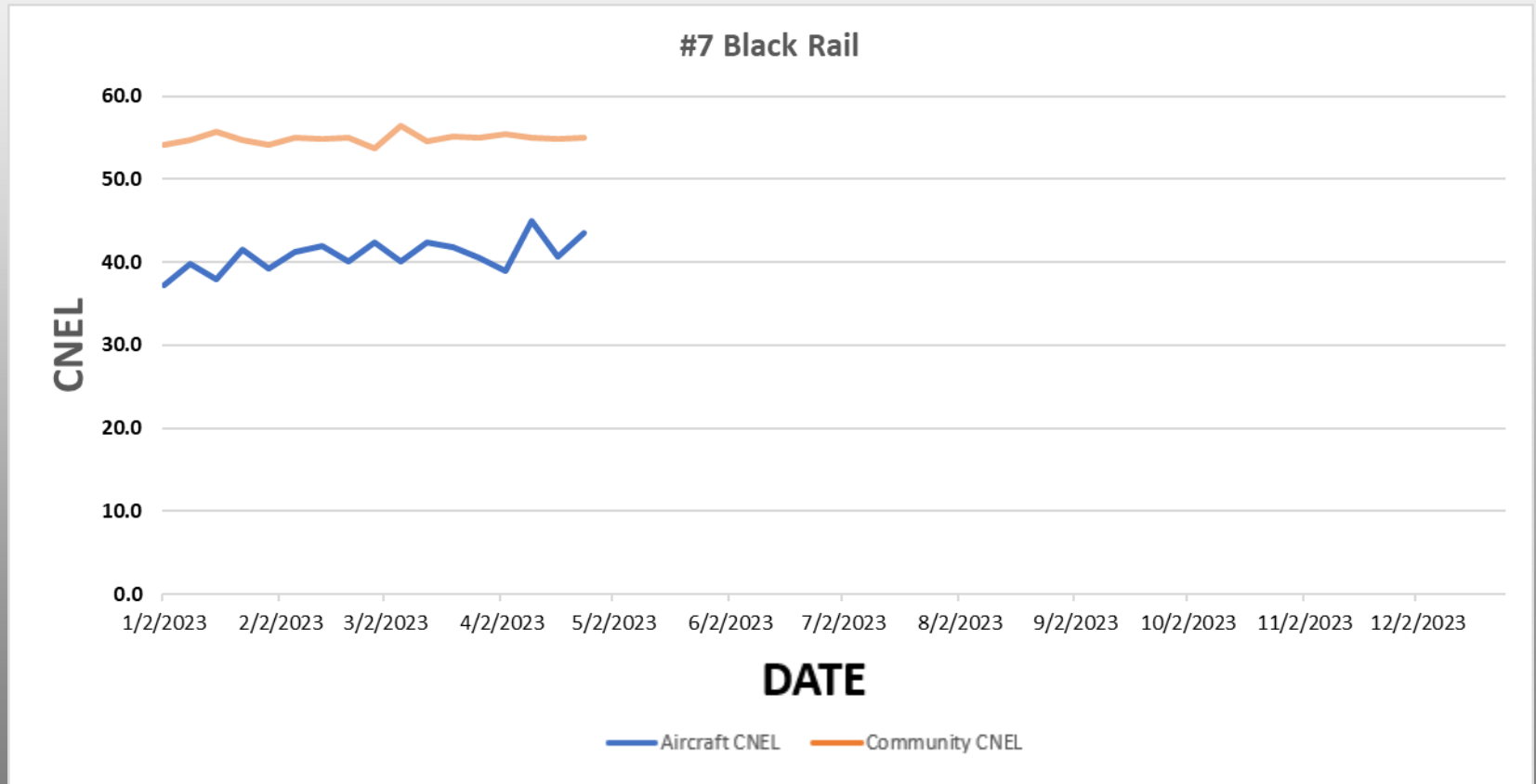


ANNUAL REVIEW OF NOISE MIC DATA



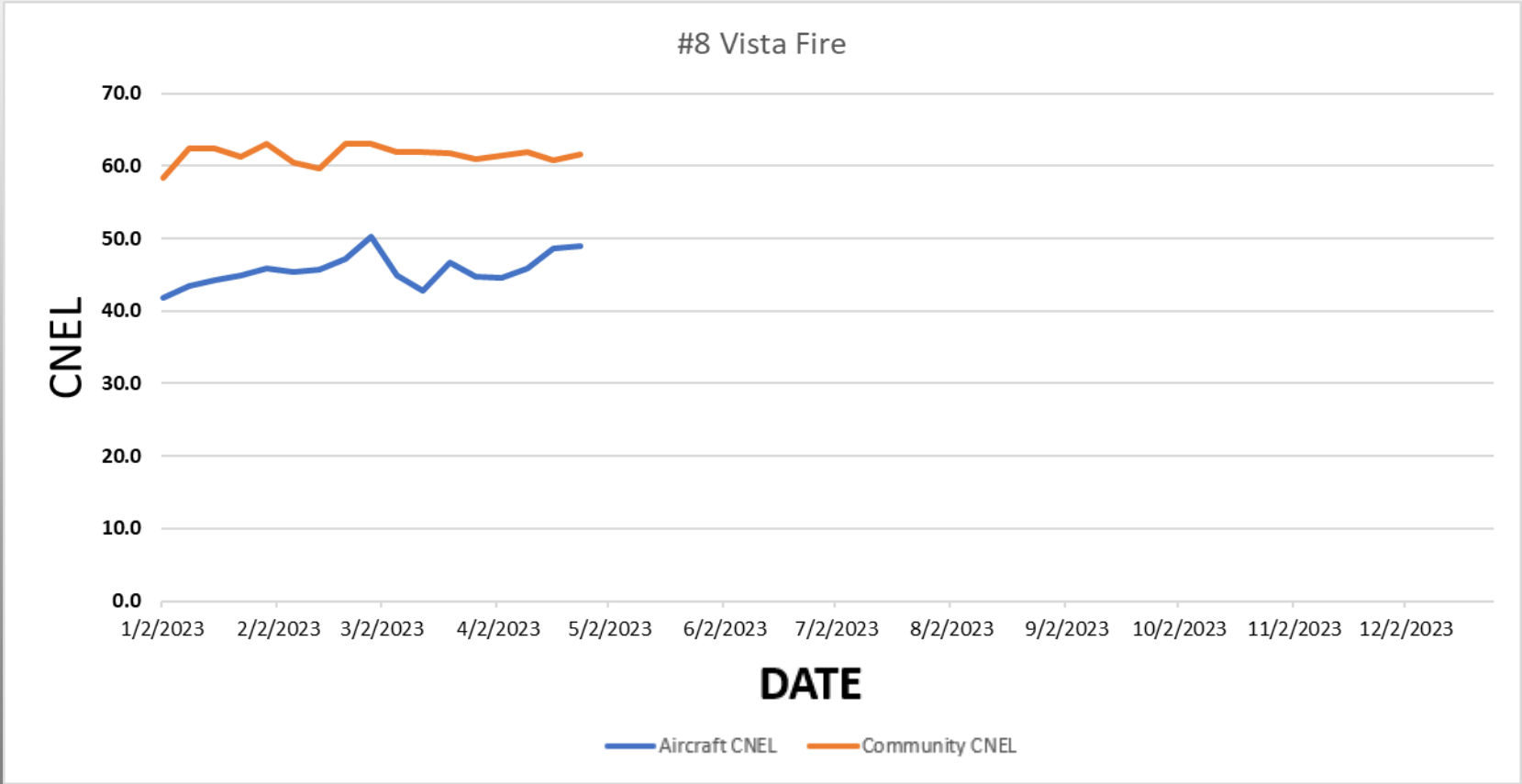


ANNUAL REVIEW OF NOISE MIC DATA



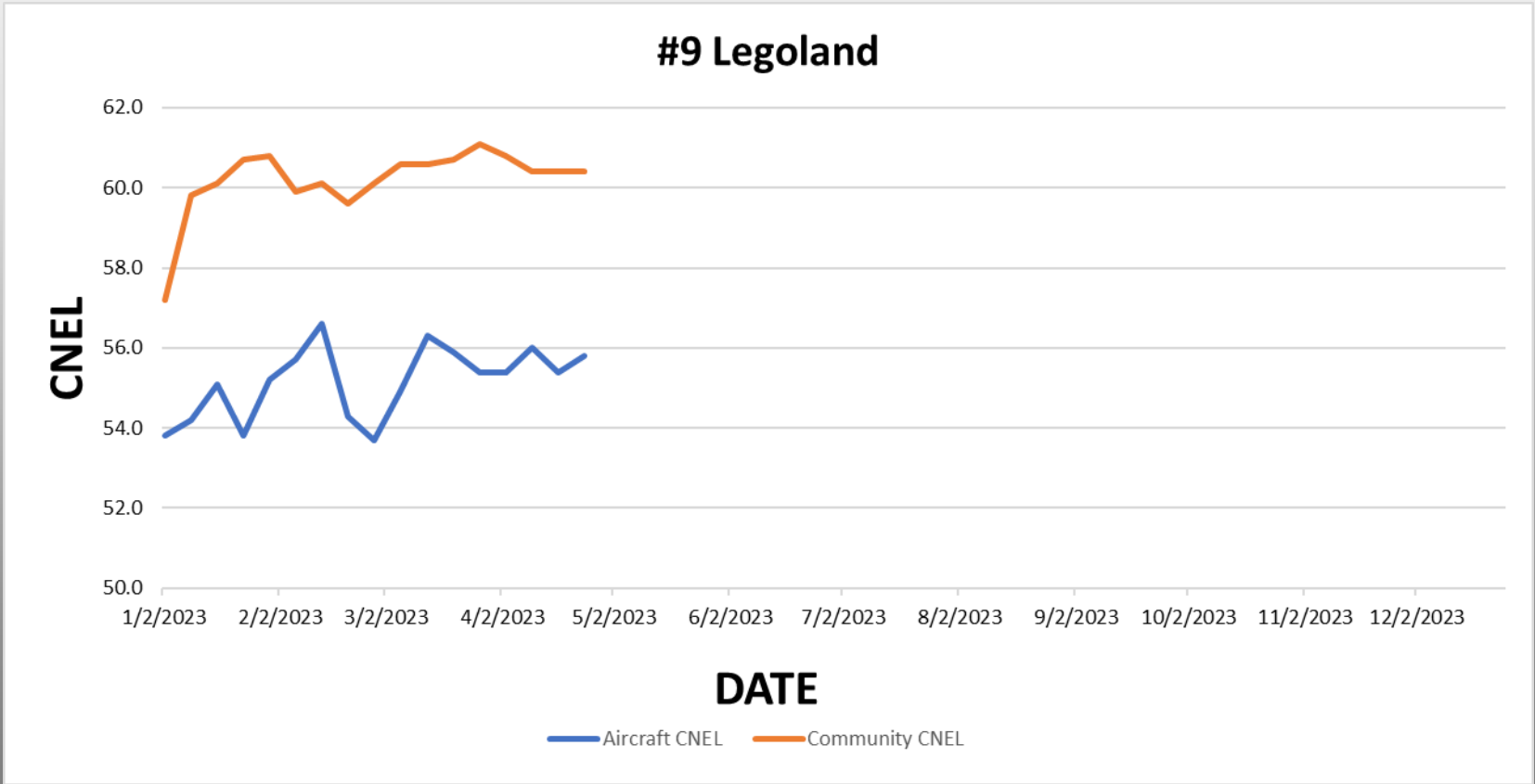


ANNUAL REVIEW OF NOISE MIC DATA





ANNUAL REVIEW OF NOISE MIC DATA





April 2023

Questions or Comments?