

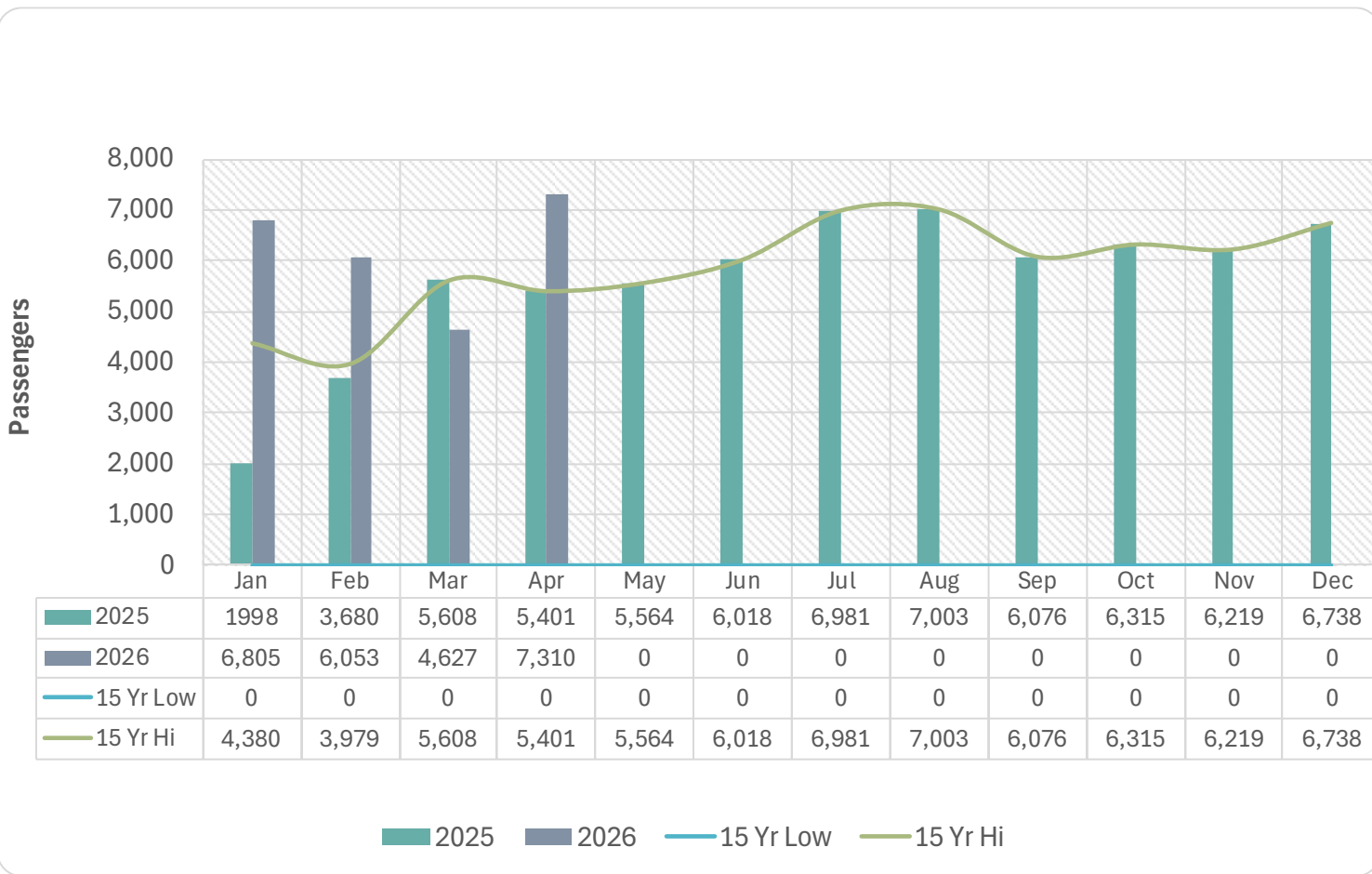
McClellan-Palomar Airport Monthly Airport Performance Report



April 2026

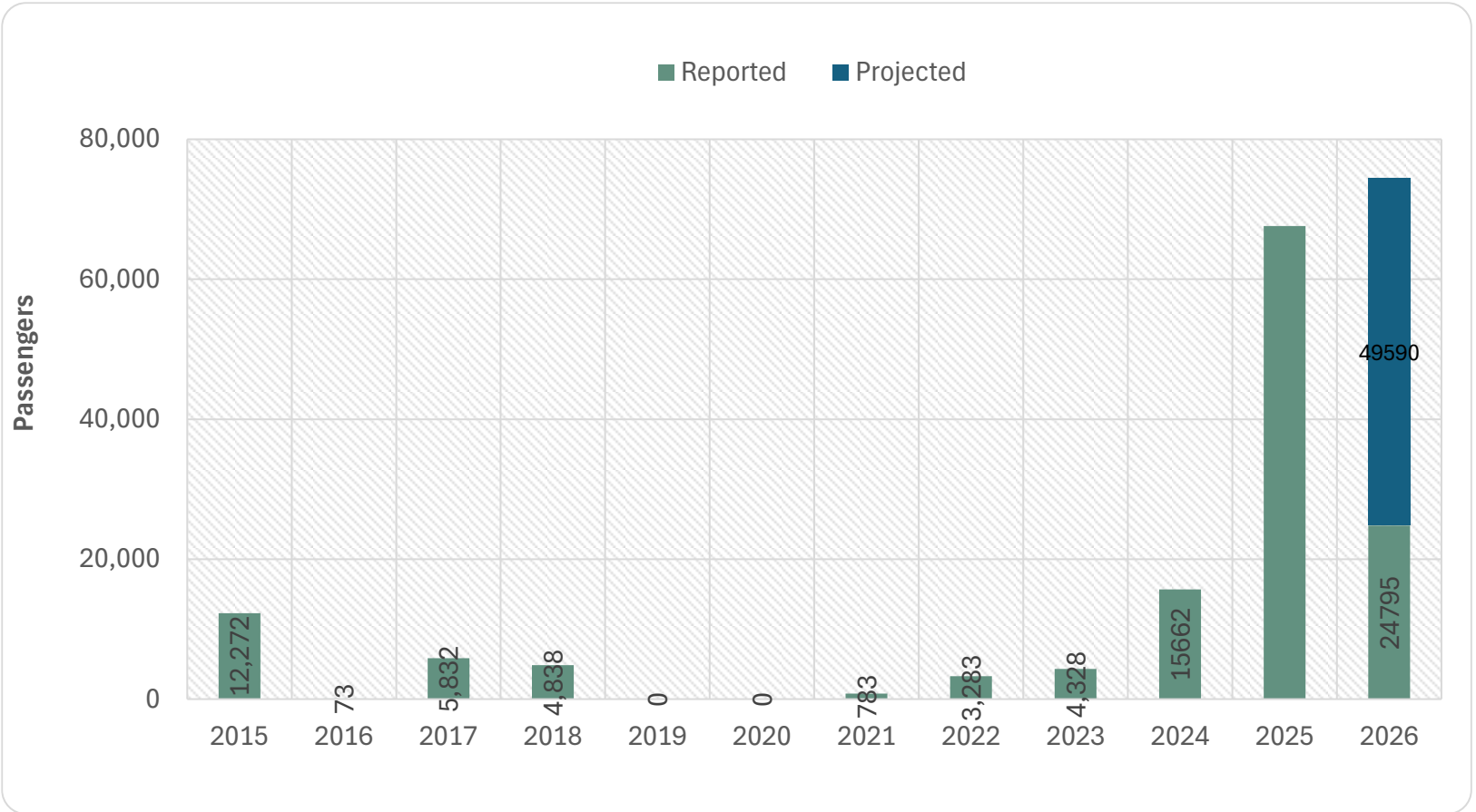


Monthly Enplanements



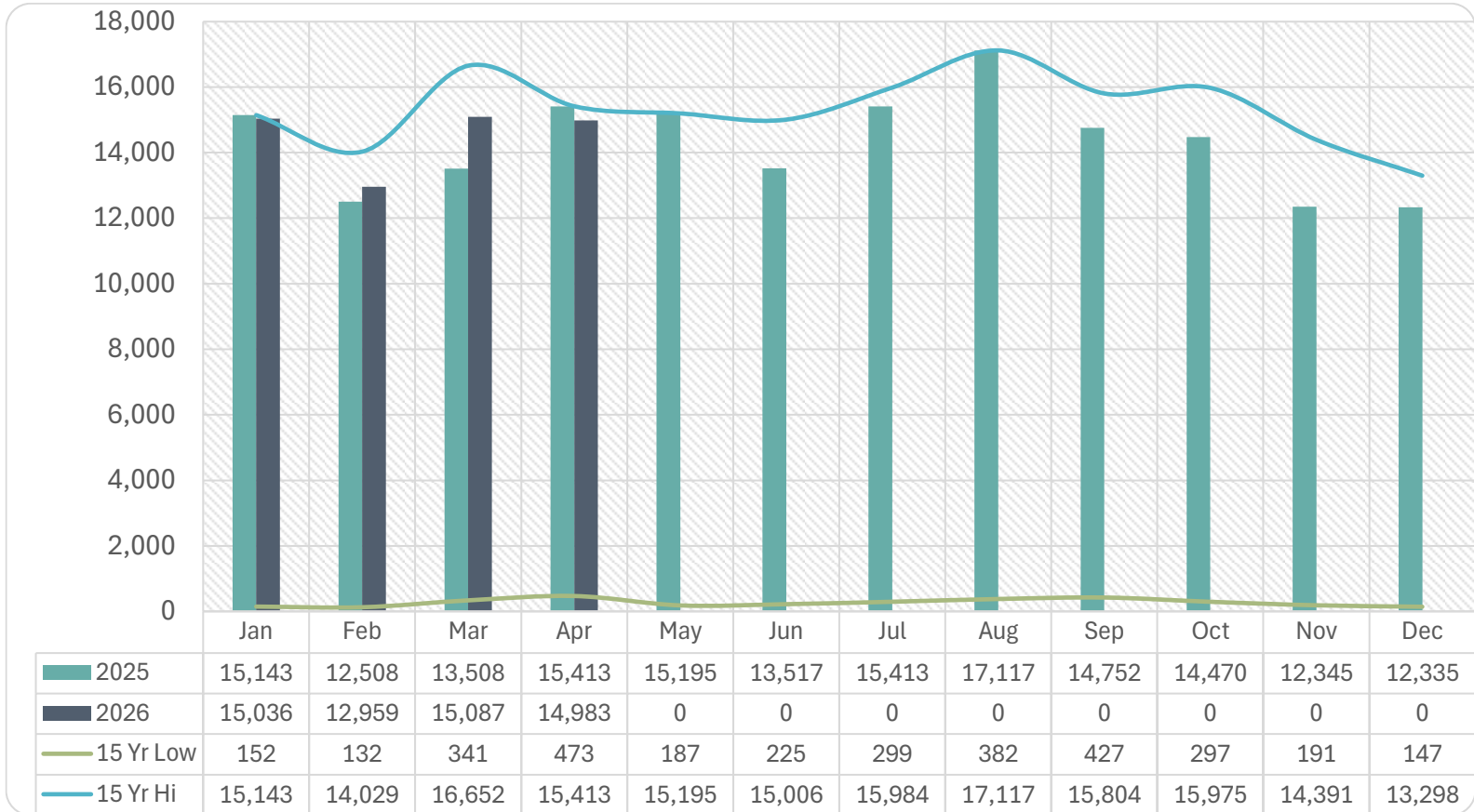


Annual Enplanements





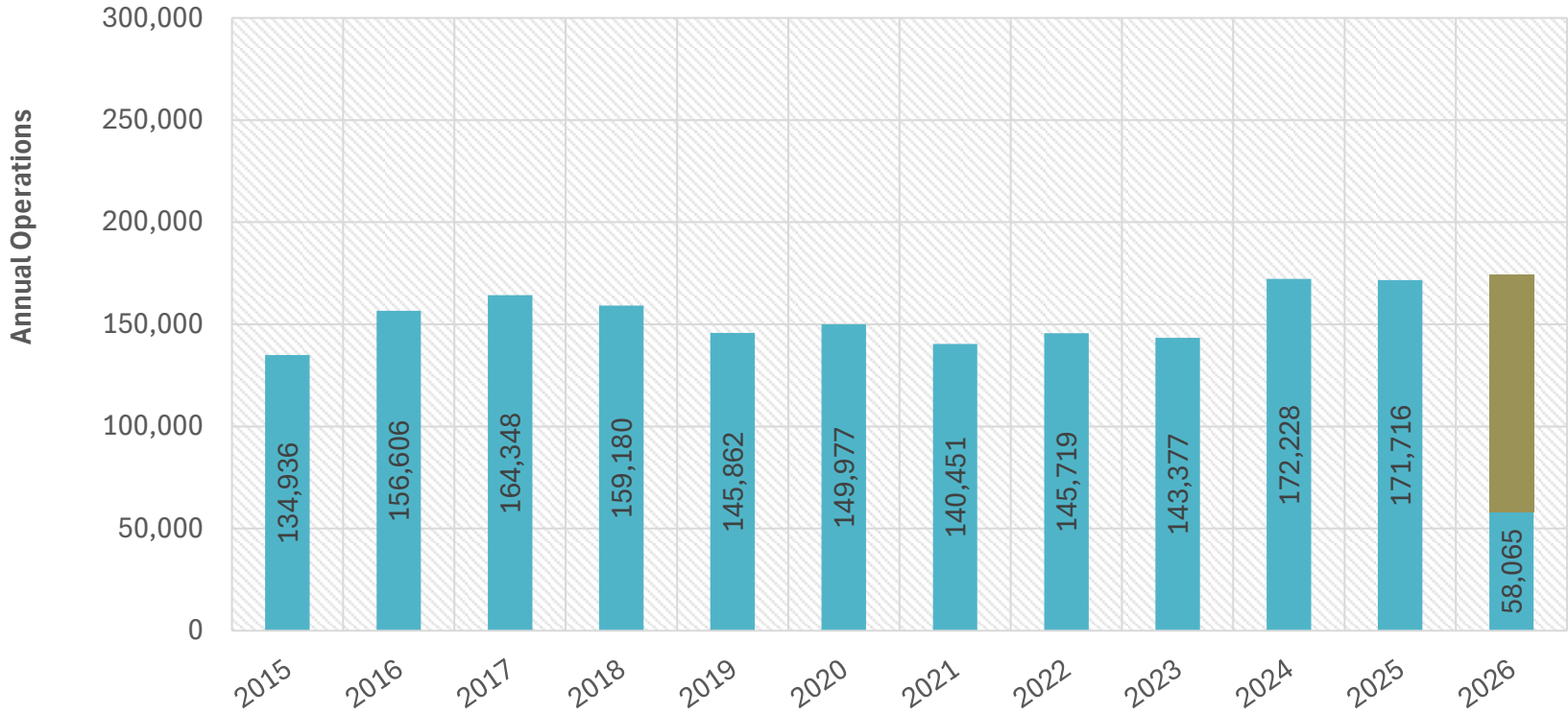
Monthly Take-Off & Landing Count





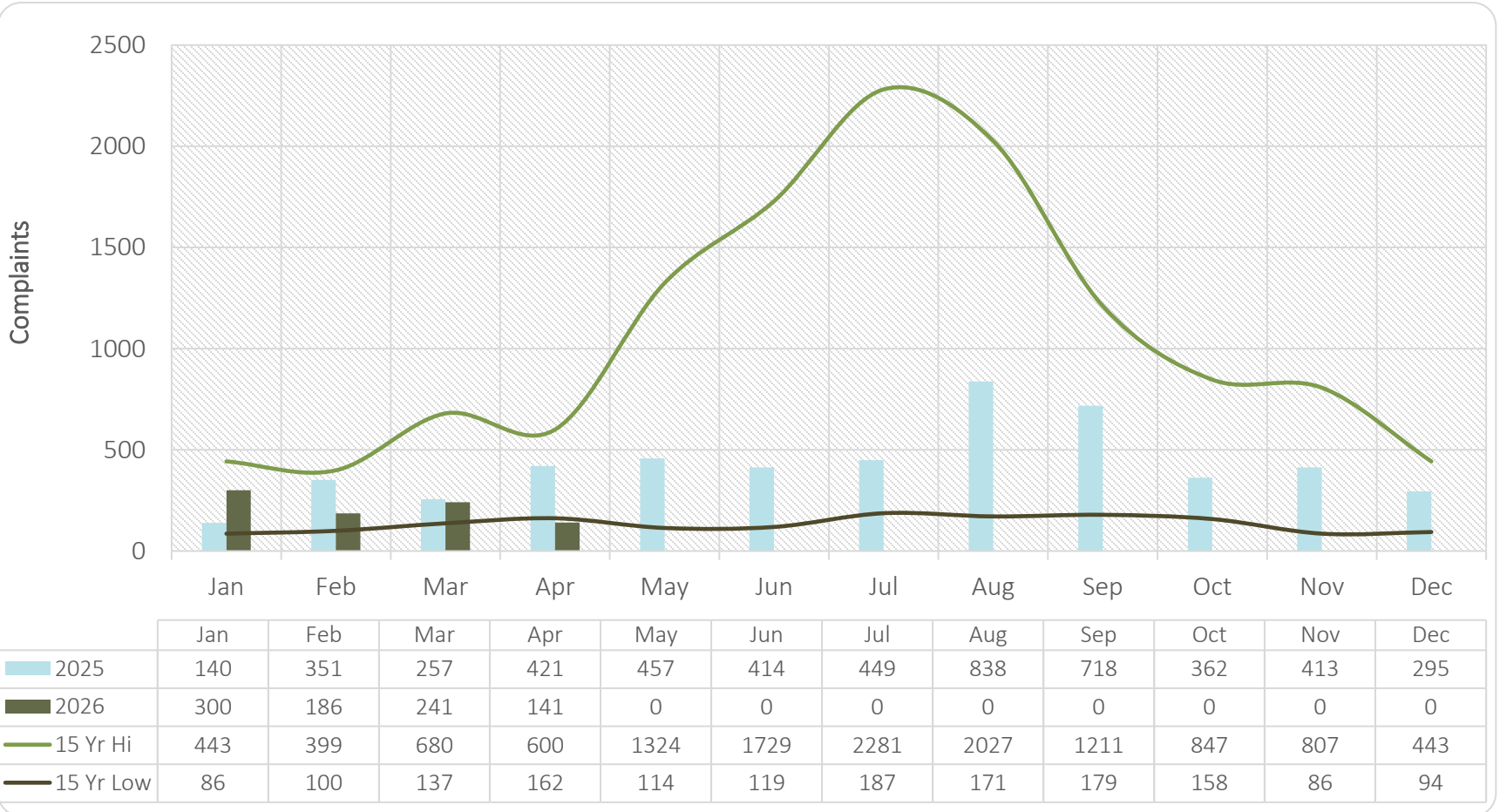
Annual Take-Off & Landing Count

■ Reported ■ Projected



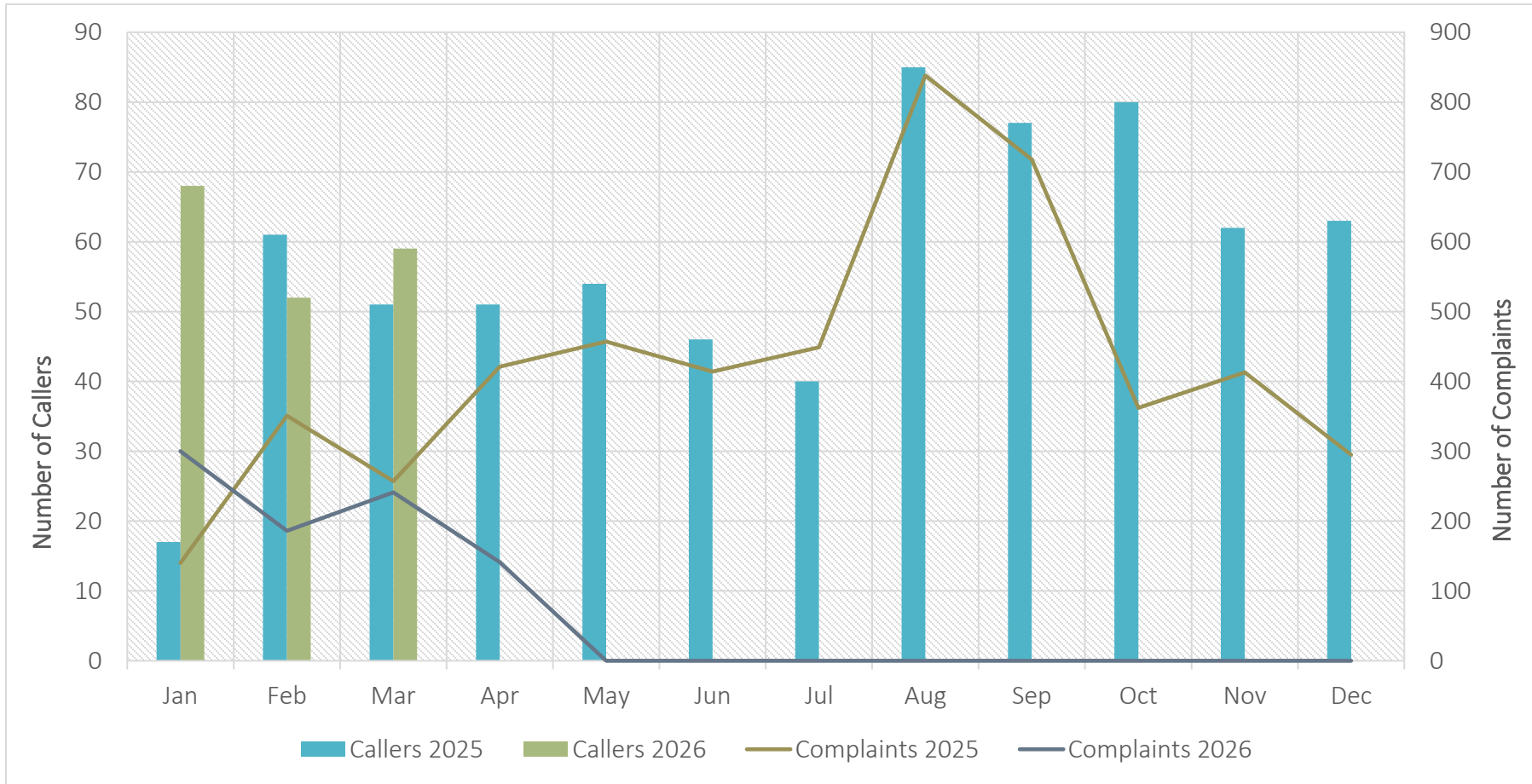


Total Monthly Complaints



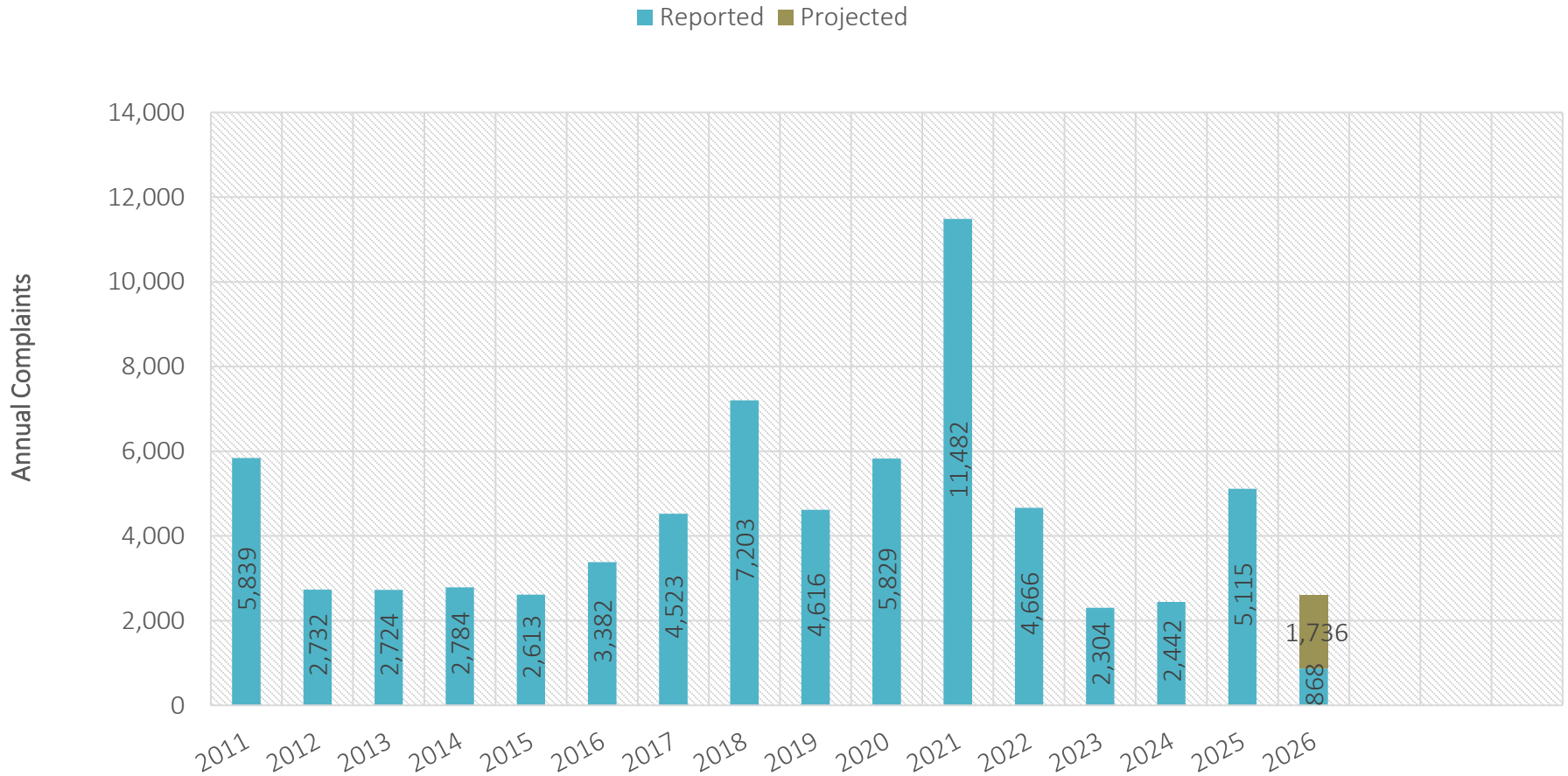


Callers & Complaints





Annual Complaints





Complaints by Quadrant

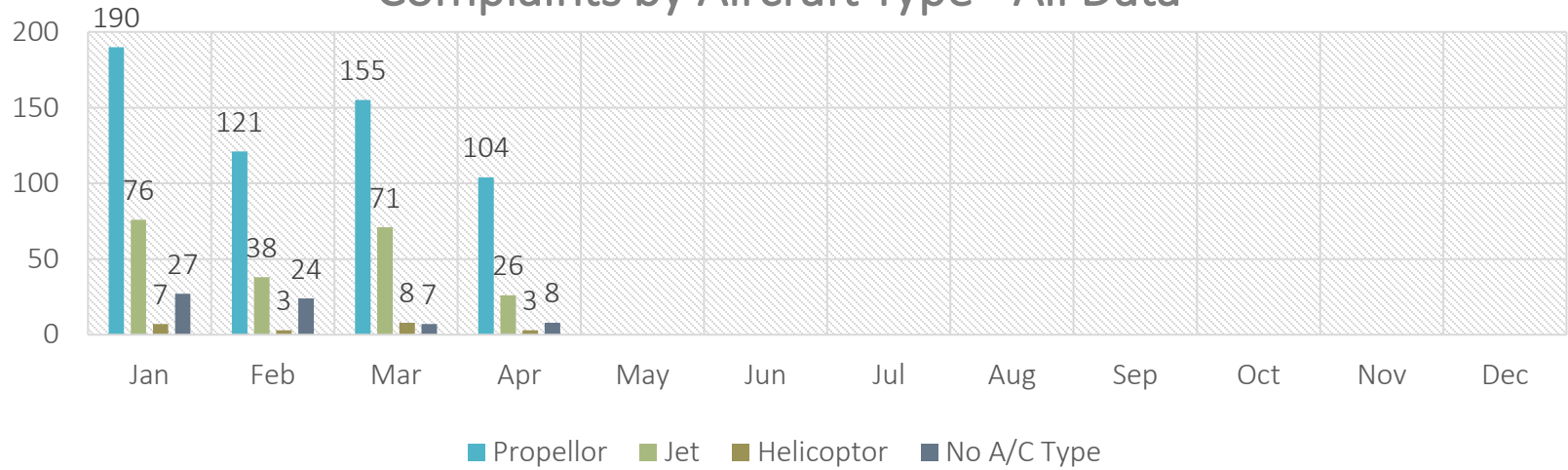
	Total Callers	Total Complaints	Filtered* Complaints
NW	10	16	16
SW	24	74	47
SE	6	7	7
NE	10	41	28
Total	52	138	98

33% of complains were from 3 callers.

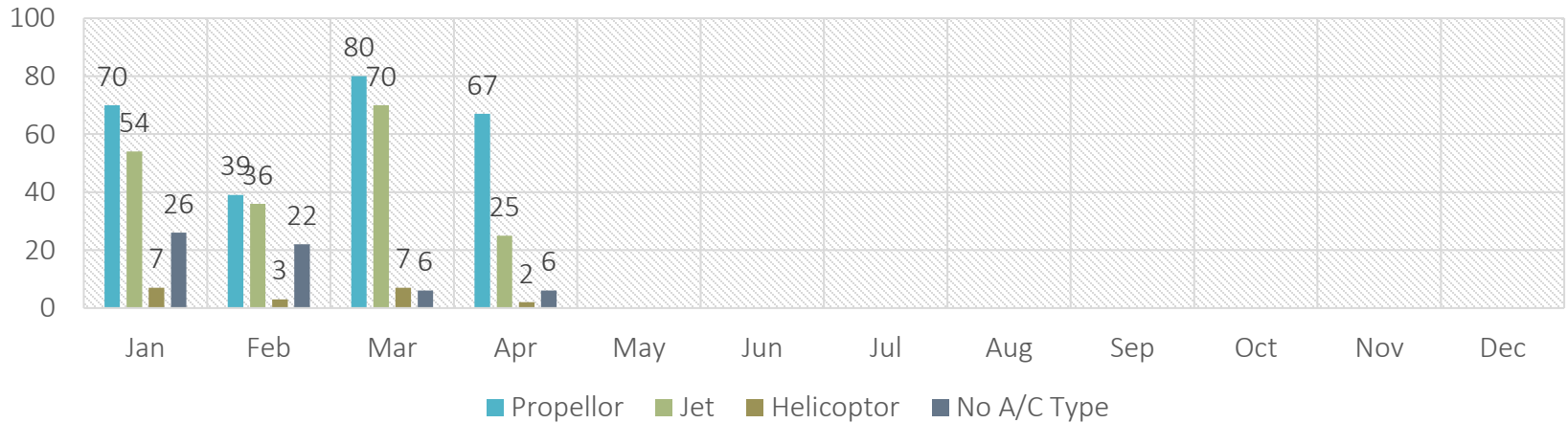
*In the filtered data set, the top 3 caller's complaints were reduced to the average number of complaints reported by the other callers.

** 3 complaint(s) from 2 caller(s) was not included. **

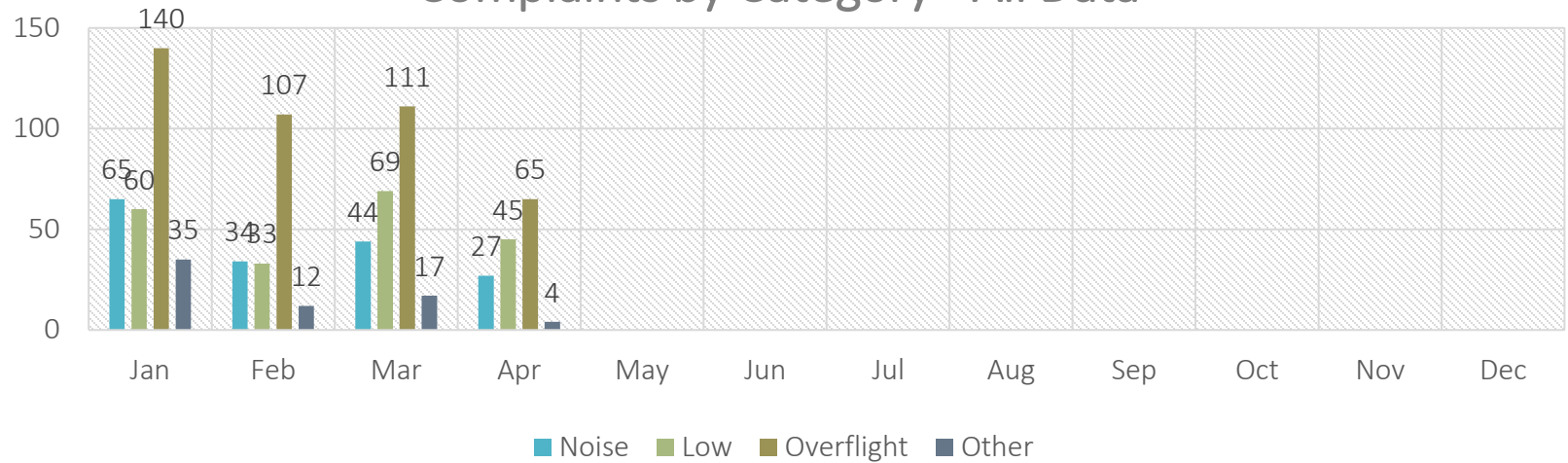
Complaints by Aircraft Type - All Data



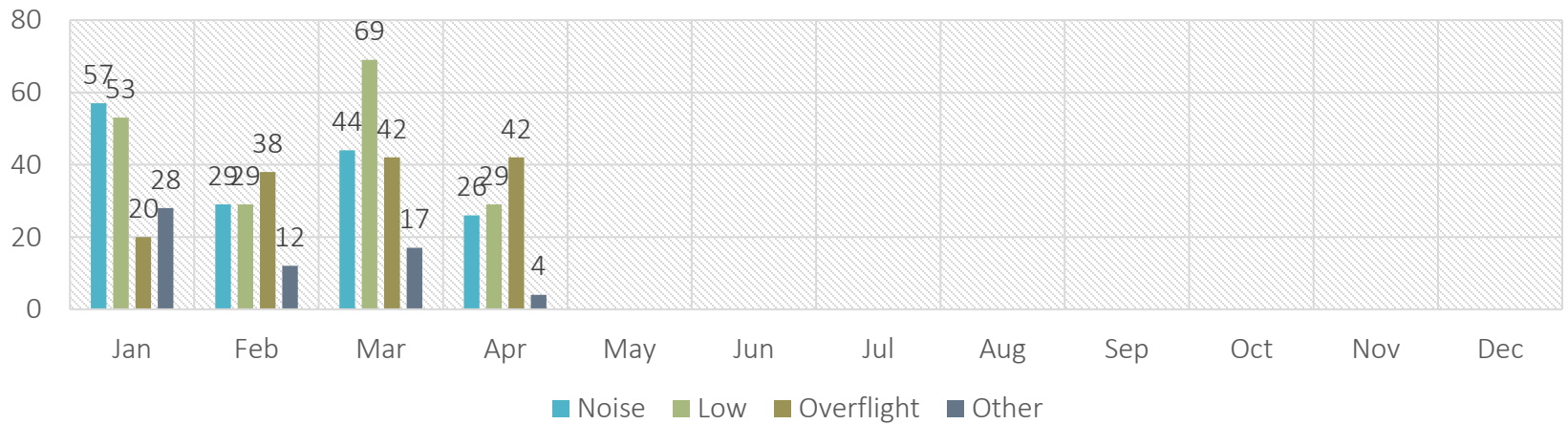
Complaints by Aircraft Type - Filtered Data



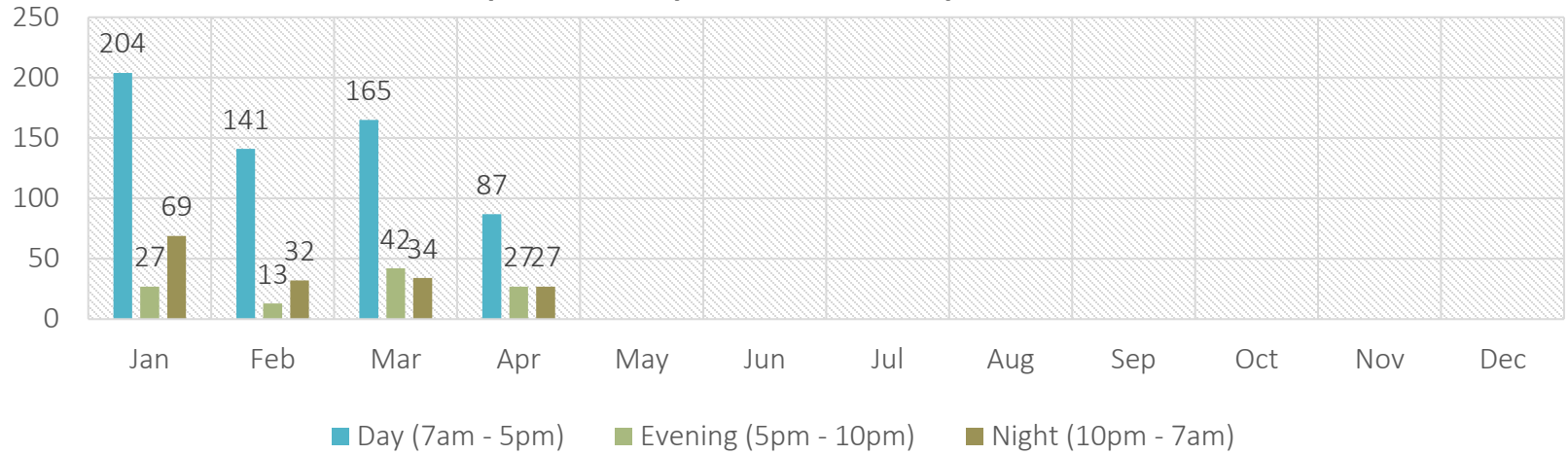
Complaints by Category - All Data



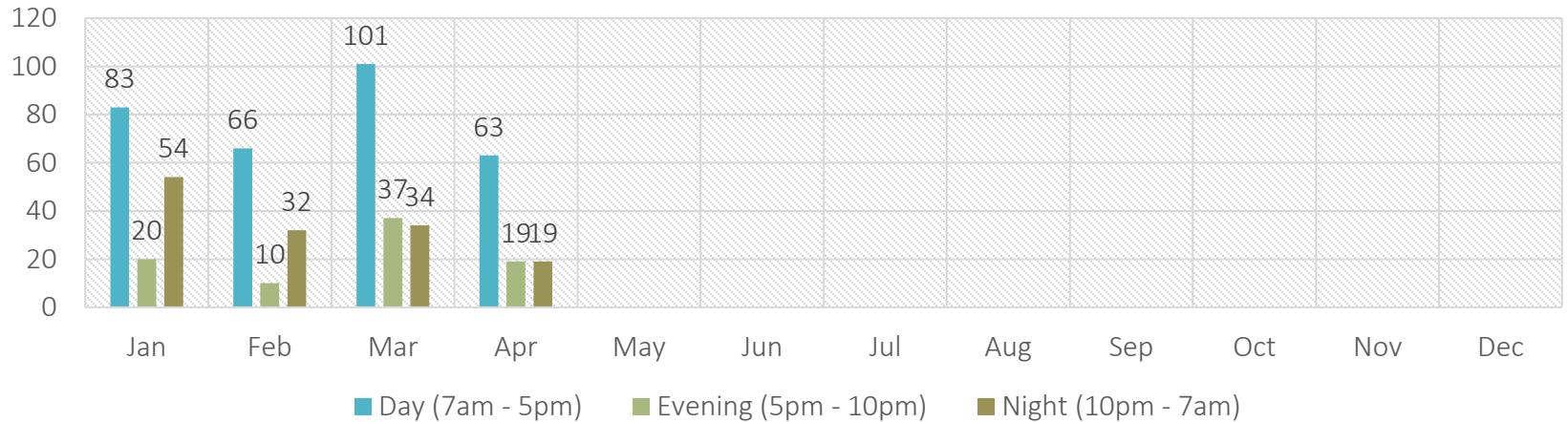
Complaints by Category - Filtered Data



Complaints by Time of Day - All Data

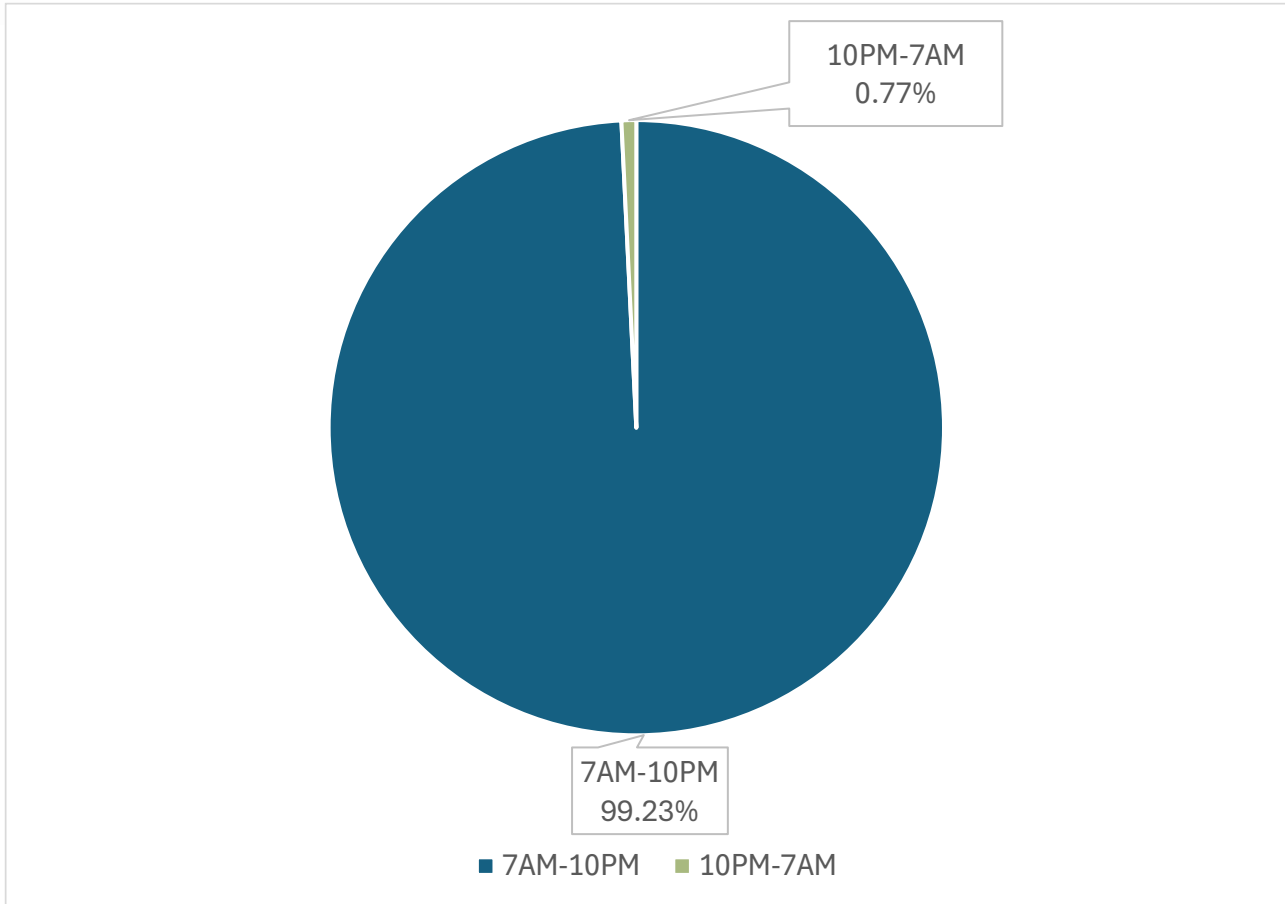


Complaints by Time of Day - Filtered Data



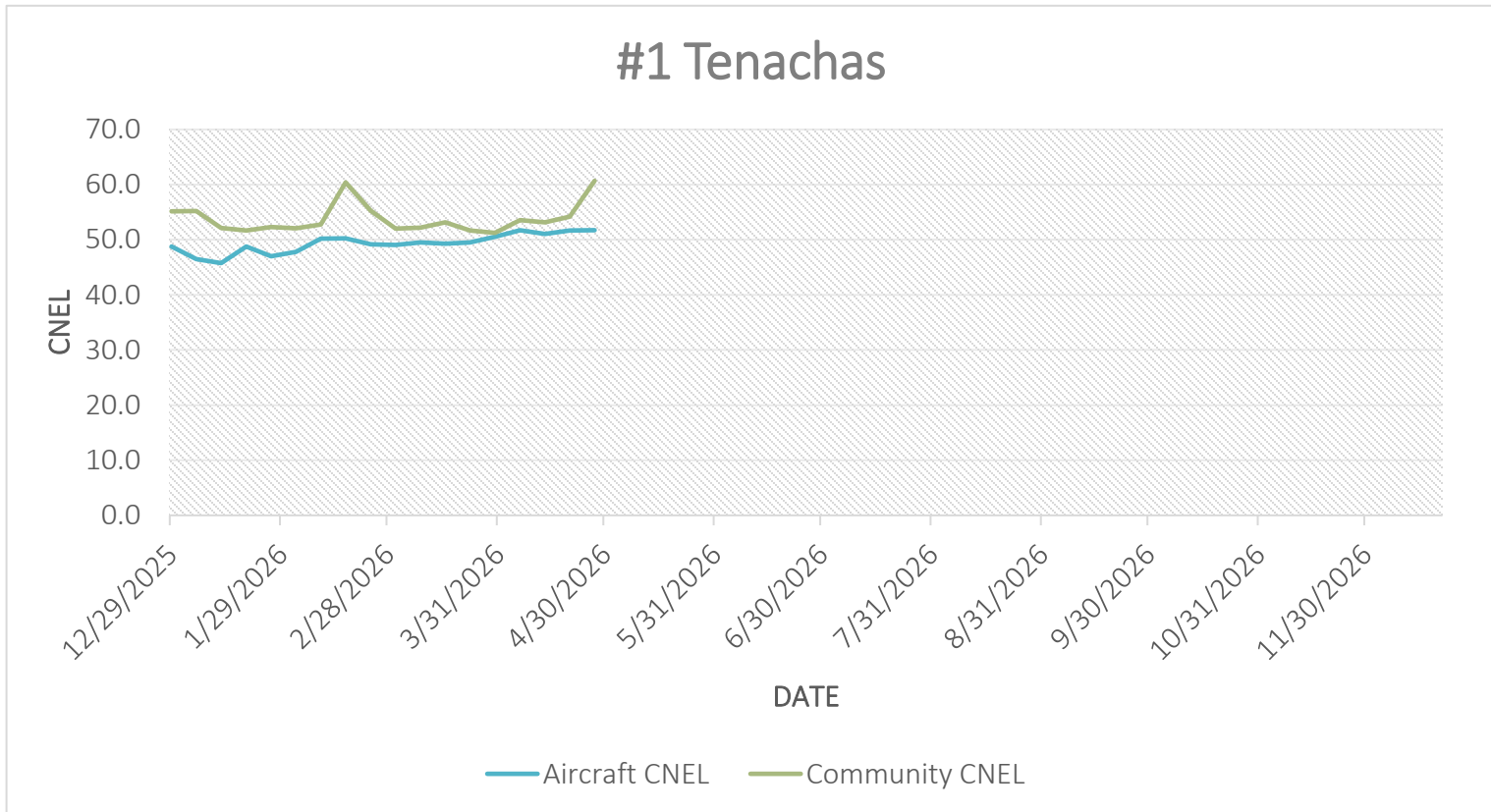


Daytime Operations vs Quiet Hours Operations



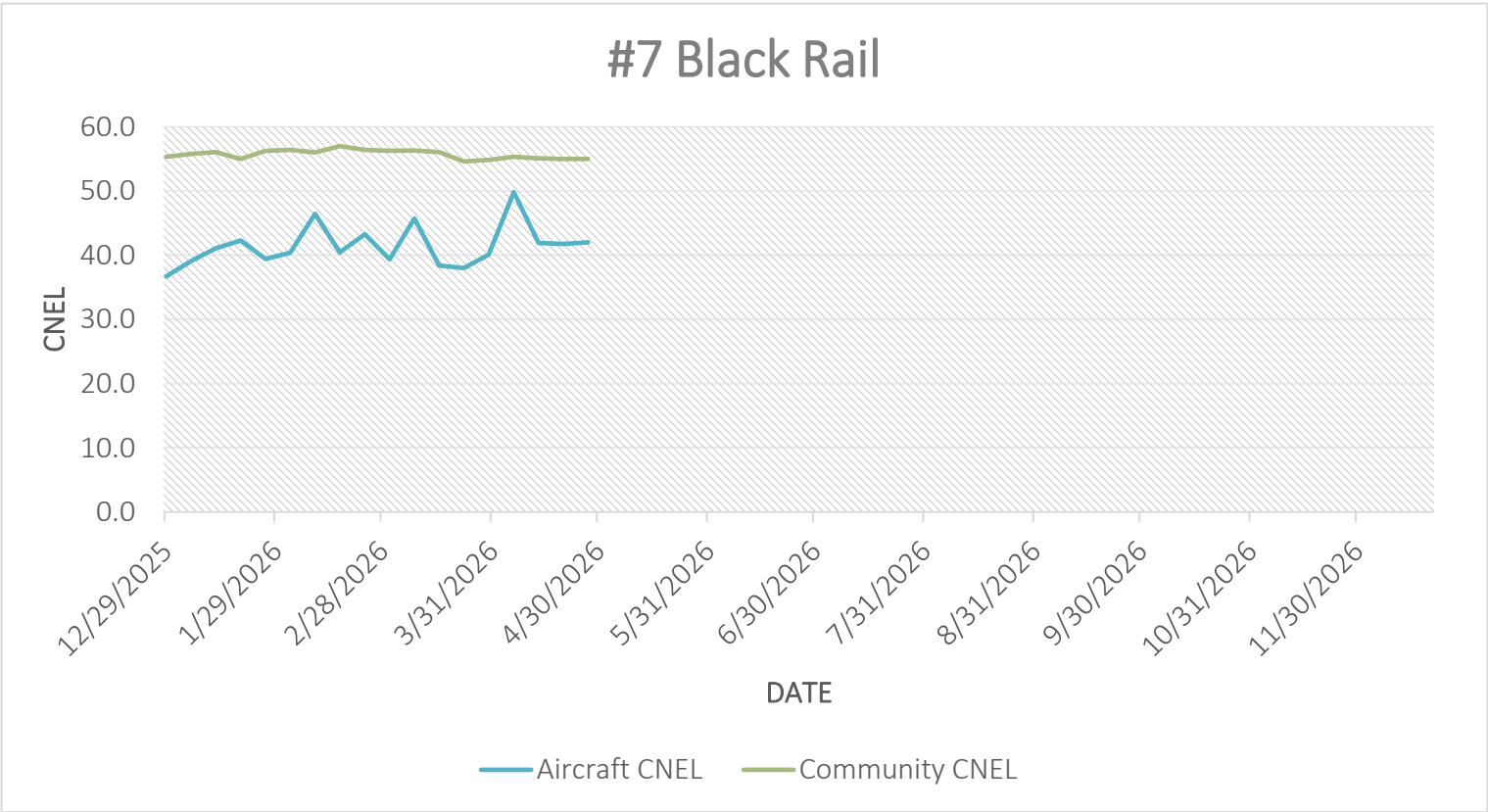


ANNUAL REVIEW OF NOISE MIC DATA



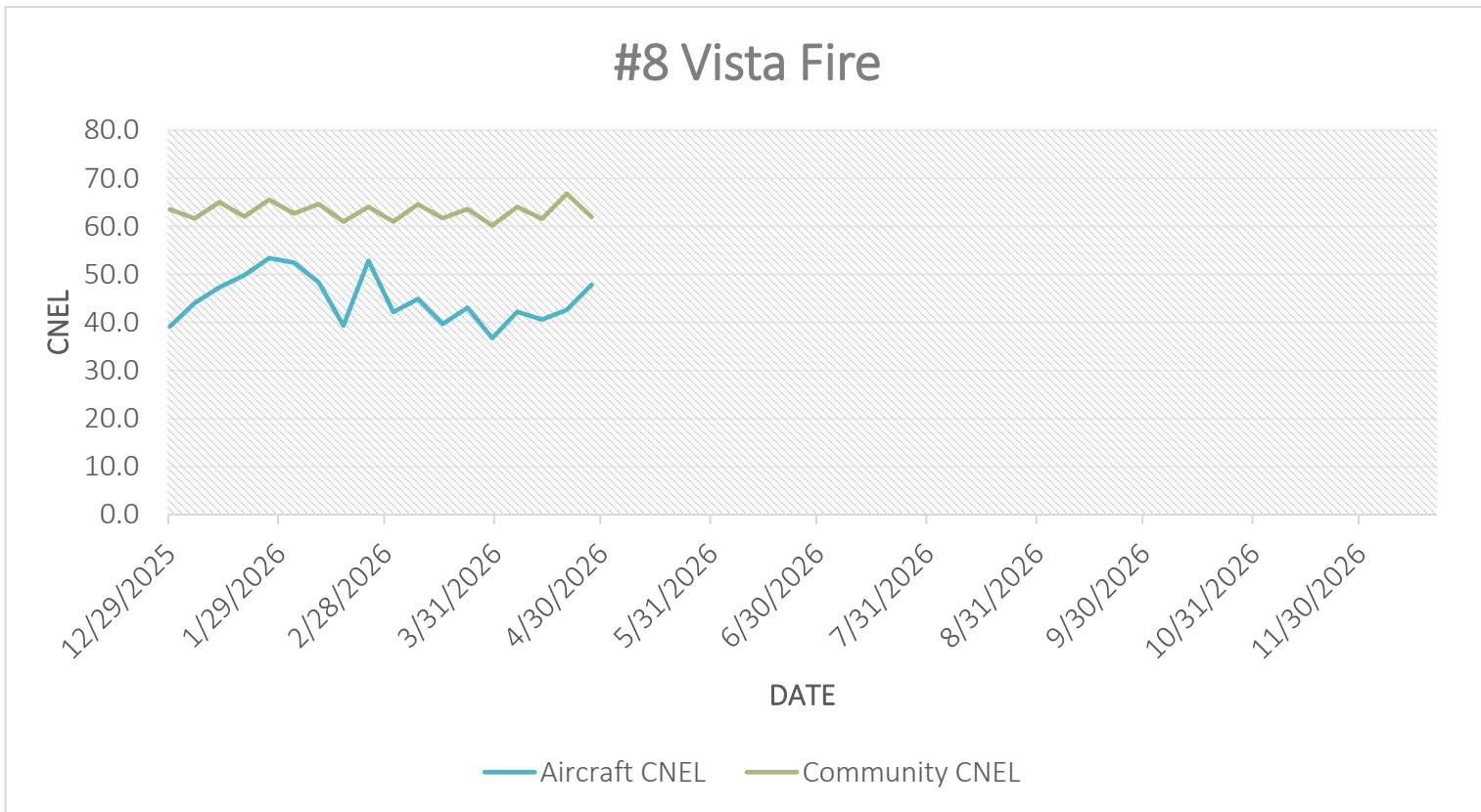


ANNUAL REVIEW OF NOISE MIC DATA



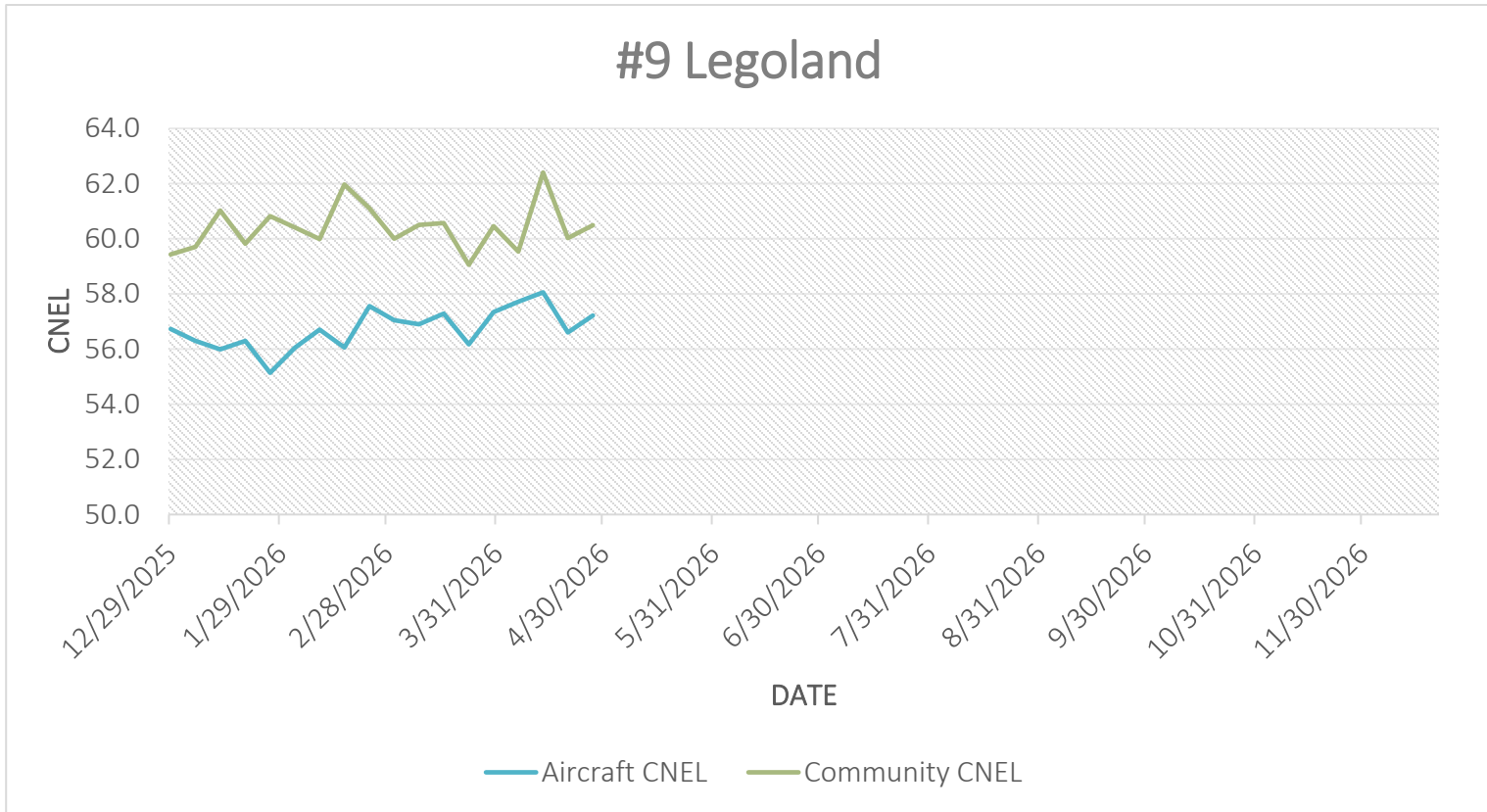


ANNUAL REVIEW OF NOISE MIC DATA



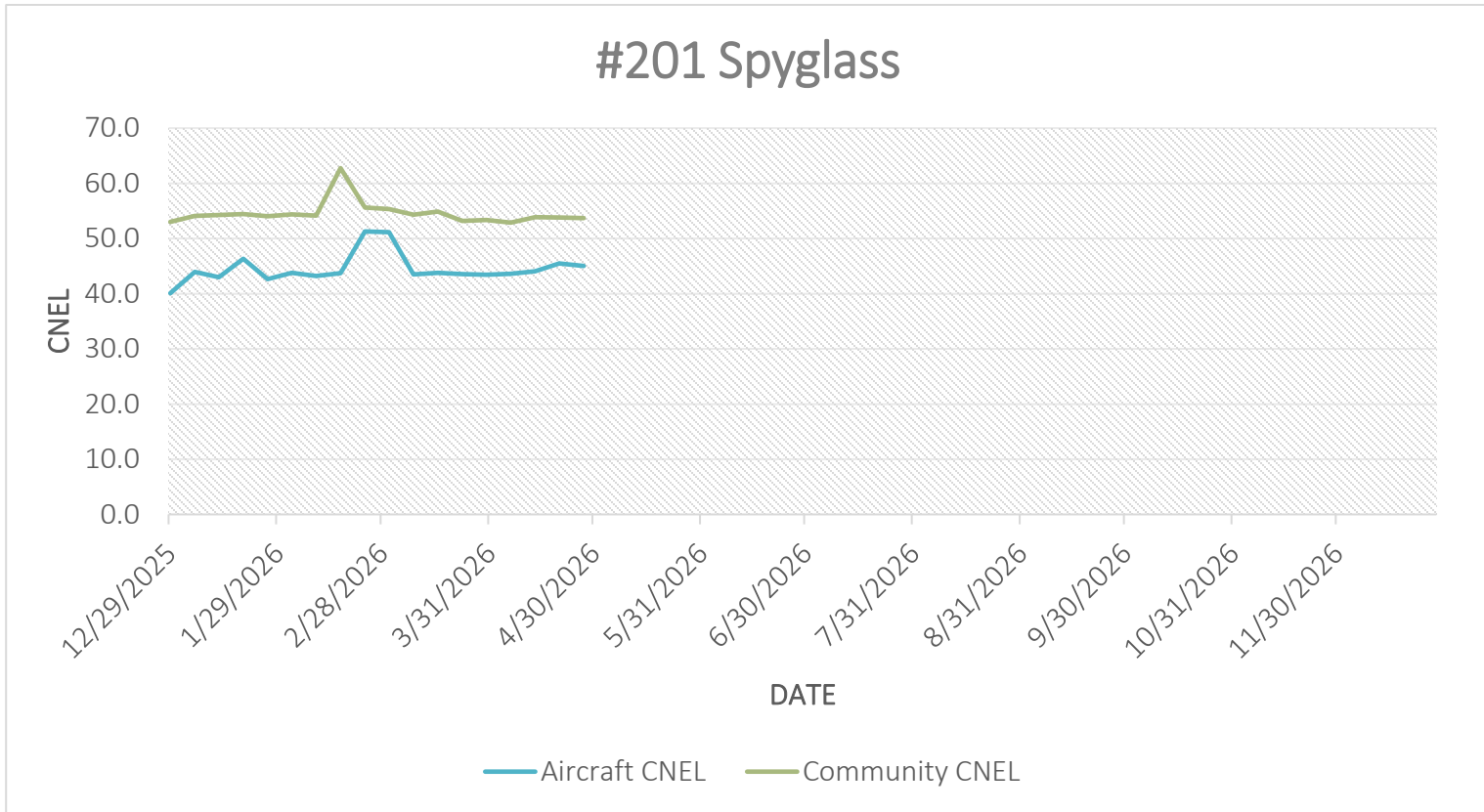


ANNUAL REVIEW OF NOISE MIC DATA



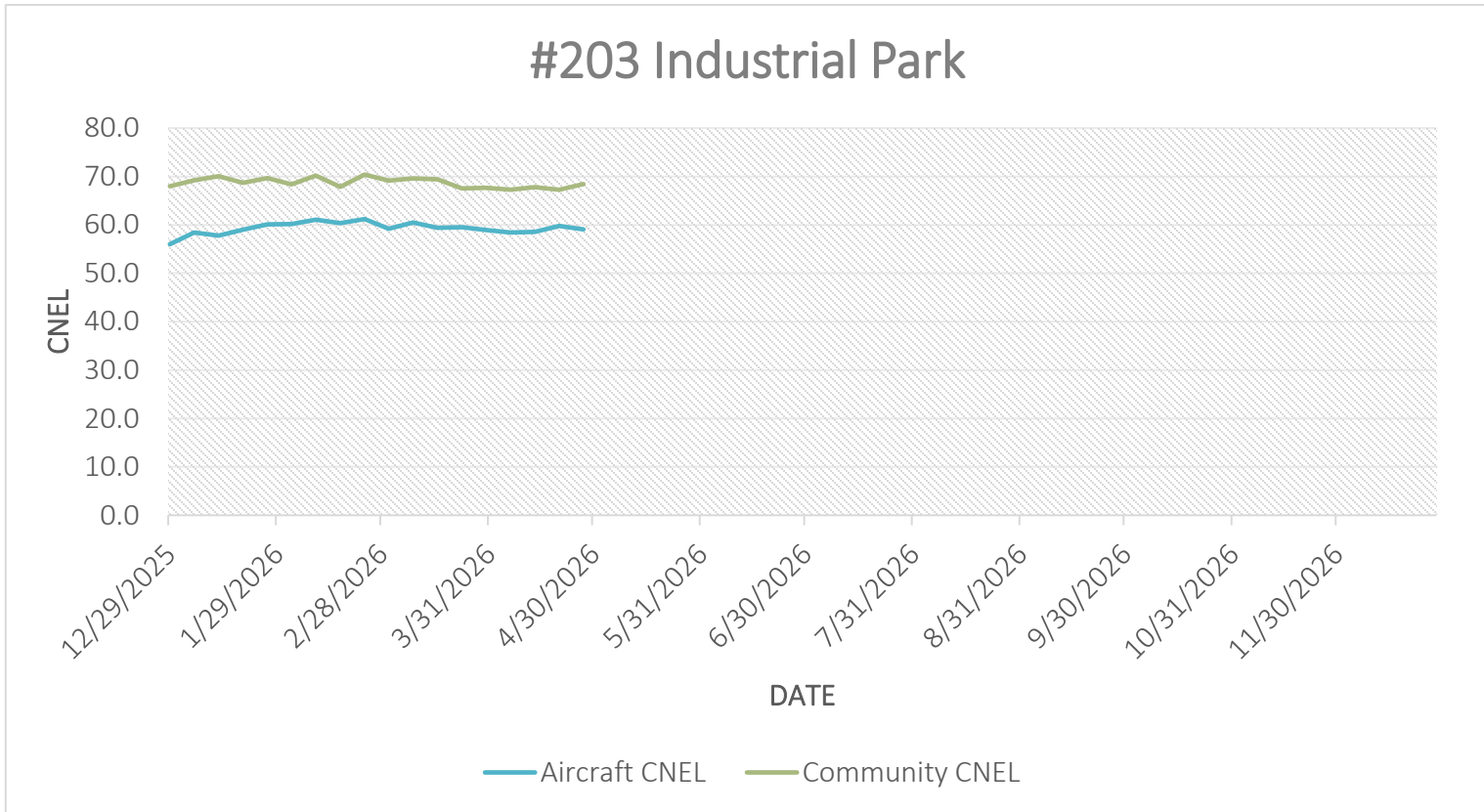


ANNUAL REVIEW OF NOISE MIC DATA

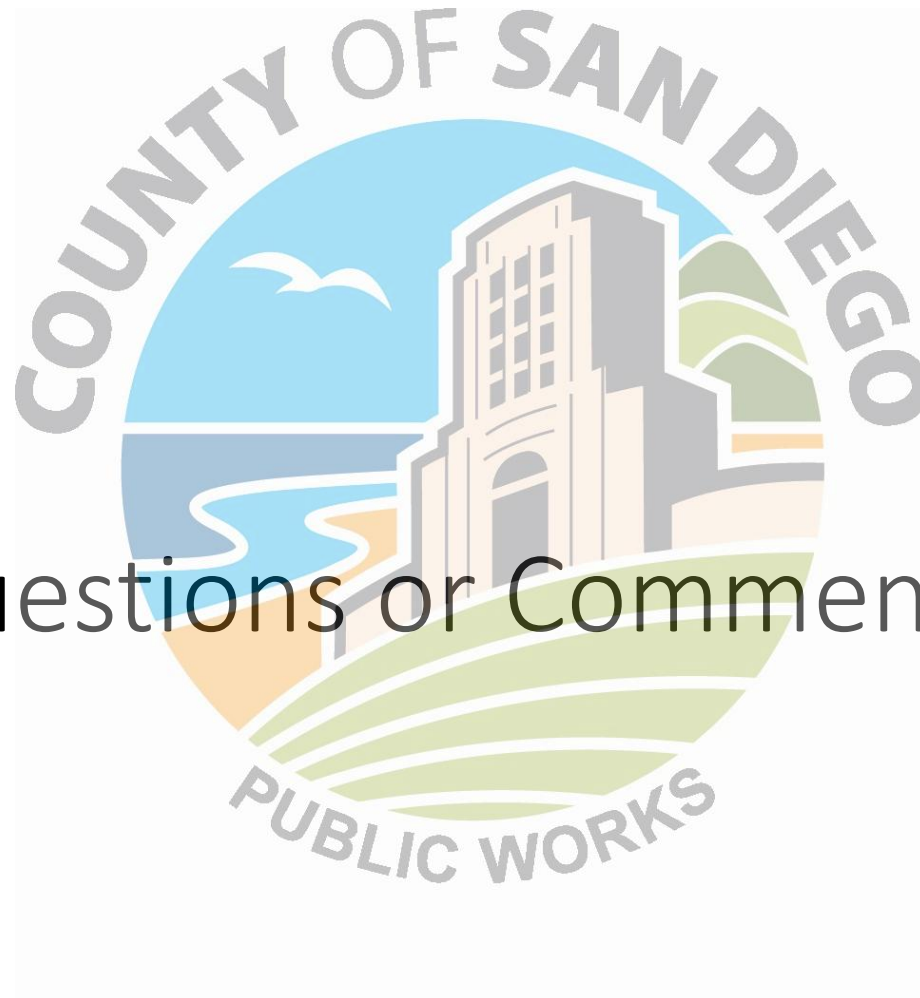




ANNUAL REVIEW OF NOISE MIC DATA



April 2026



Questions or Comments?