

# Great Lakes Aviation, Ltd.



**MCCLELLAN-PALOMAR  
Airport Advisory Meeting  
February 16, 2017**

## Where Great Lakes Flies!

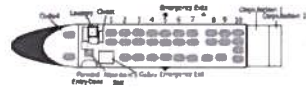


# Meet The Fleet!

→ Great Lakes Airlines currently operates two types of aircraft



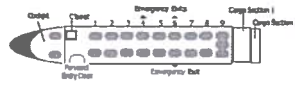
Embraer EMB-120 Brasilia • 30 Seat Turbo Prop



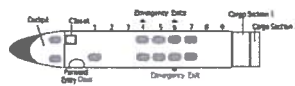
- 32,000 ft. Maximum Altitude
- 360 mph Maximum Cruising Speed
- Flight Attendant For Service & Safety
- Contoured Airline Size Seats with Recline & Tray Tables
- Overhead Stowage Compartments
- Preheated and/or Cooled Cabin



Beechcraft 1900D • 19 Seat Turbo Prop



Beechcraft 1900D • 9 Seat Turbo Prop



- 25,000 Maximum Altitude
- 325 mph Maximum Cruising Speed
- Spacious Stand-Up Cabin
- Under-The-Seat Stowage Area
- Preheated and/or Cooled Cabin
- Contoured Airline Size Seats
- A Window & Aisle Seat In One





## Passenger Experience

- Convenient Schedules
  - 2-3 Flights per day
  - Initial schedule
    - Departures – Approximately 8am, 11am & 4pm
    - Arrivals – Approximately 10am, 4pm & 7pm
- LAX HUB- Terminal 6
- Interline Ticketing and Baggage Service
  - Agreements:
    - American Airlines
    - Delta Airlines
    - Code-Share United Airlines
  - Delta Sky Miles Frequent Flyer Program



## Marketing - Fares

→ Great Lakes typical marketing campaign includes:

- Print ads
- Radio ads
- Social media
- Signage
- Website – Online Booking
- Electronic Ticketing
- Expedia family of Online Travel Agencies



- Fares will be affordable and competitive
- Introductory offers?



7

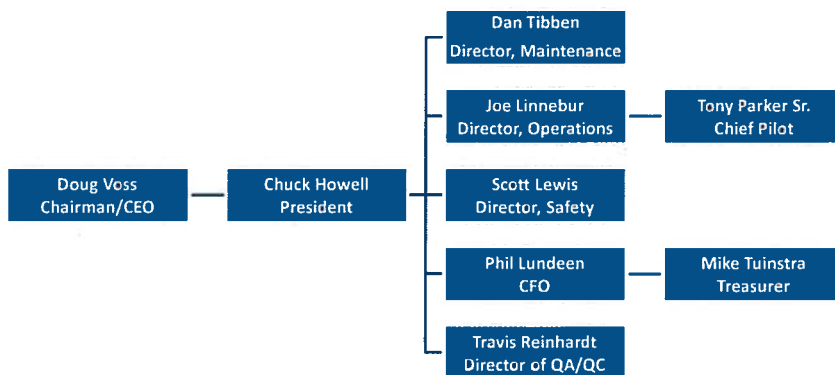
## Maintenance

- Primary heavy maintenance facility located at the Company's Cheyenne, Wyoming headquarters.
- Capacity to provide for the servicing of up to 6 aircraft simultaneously.
- FAR part 145 certified repair station
- Line maintenance at its Los Angeles and Phoenix Hubs
- Maintenance base in Prescott, AZ for LAX aircraft
- Full Service Maintenance Base at Denver hub



8

## Executive Organizational Chart



## Questions?

Visit our Website:

<http://www.greatlakesav.com/>

1-800-554-5111

