

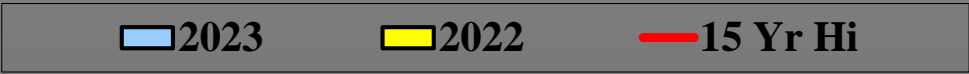
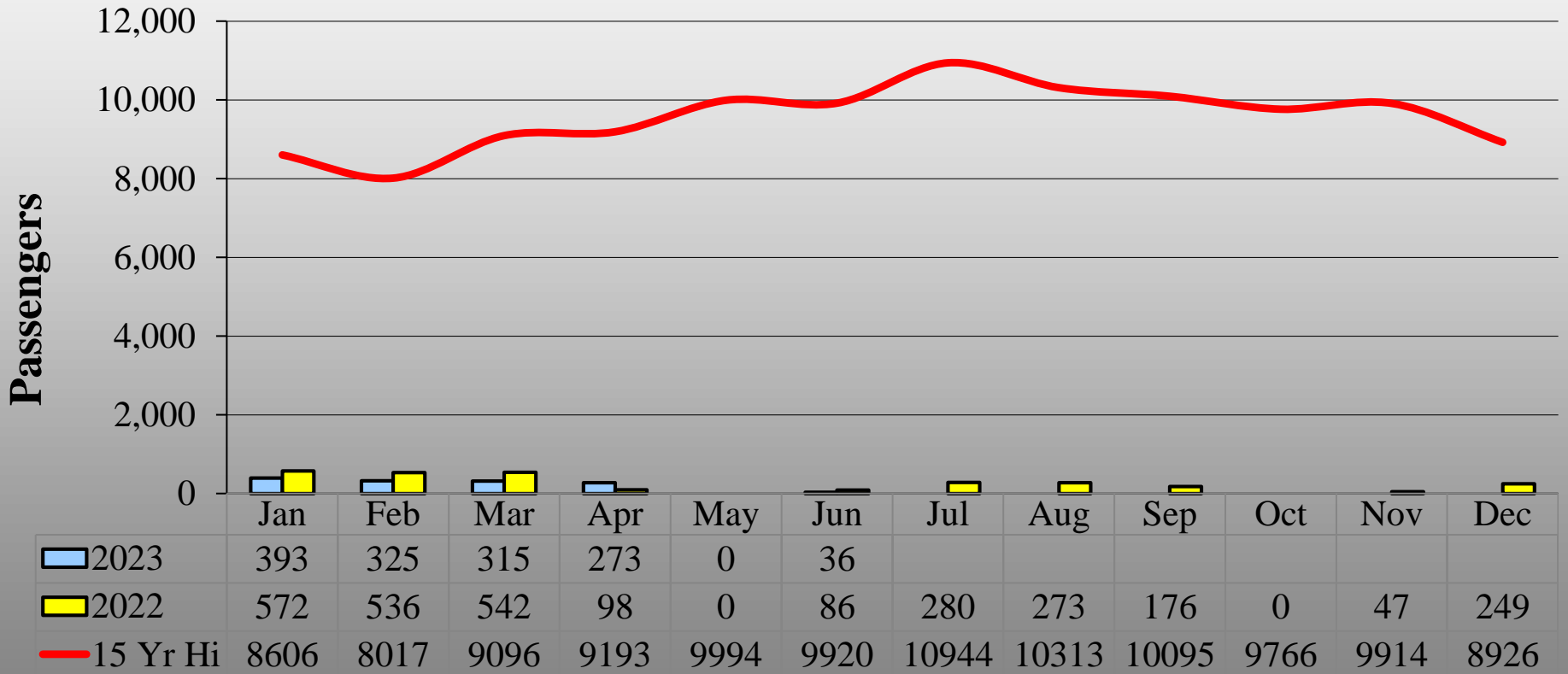
McClellan-Palomar Airport Monthly Airport Performance Report



June 2023



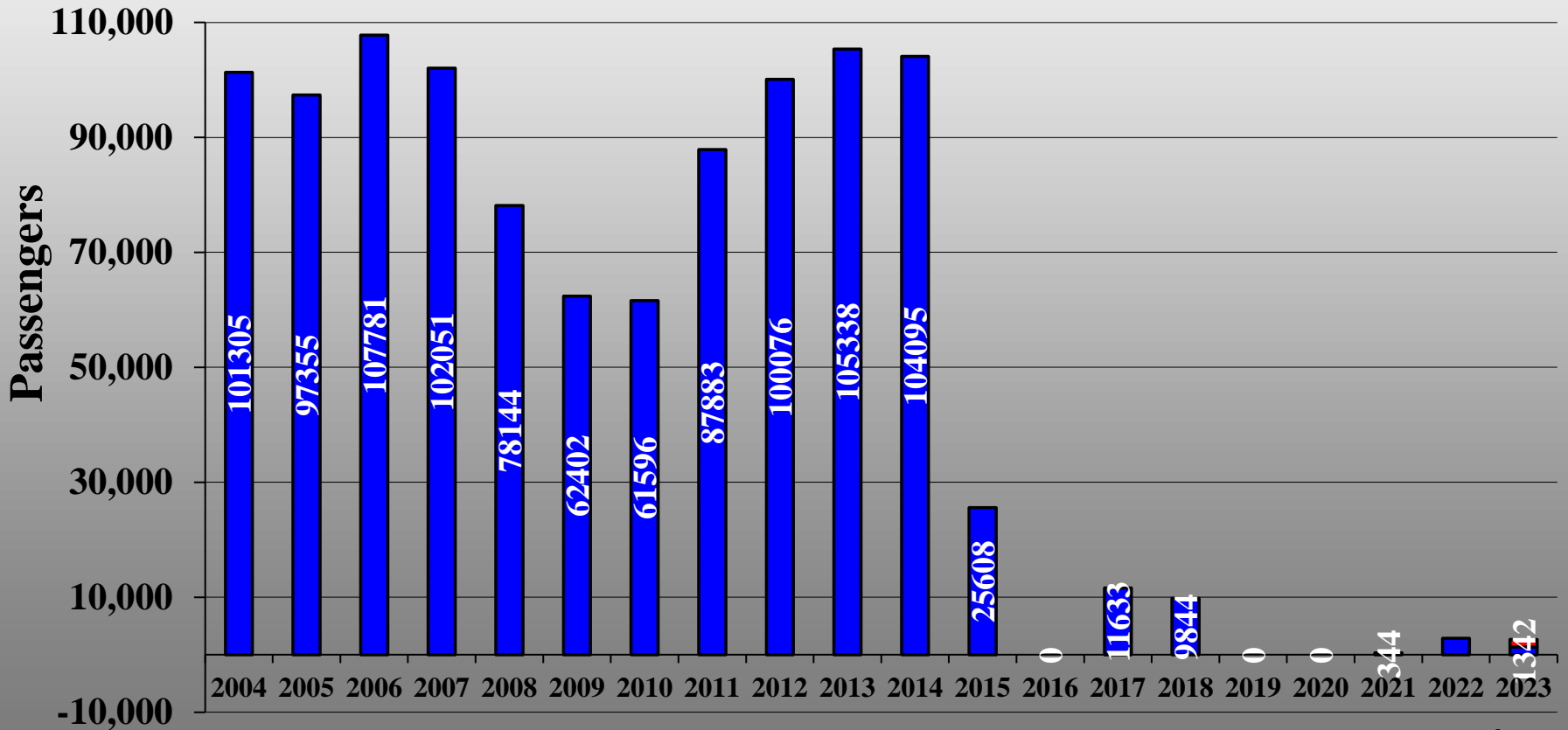
Monthly Enplanements





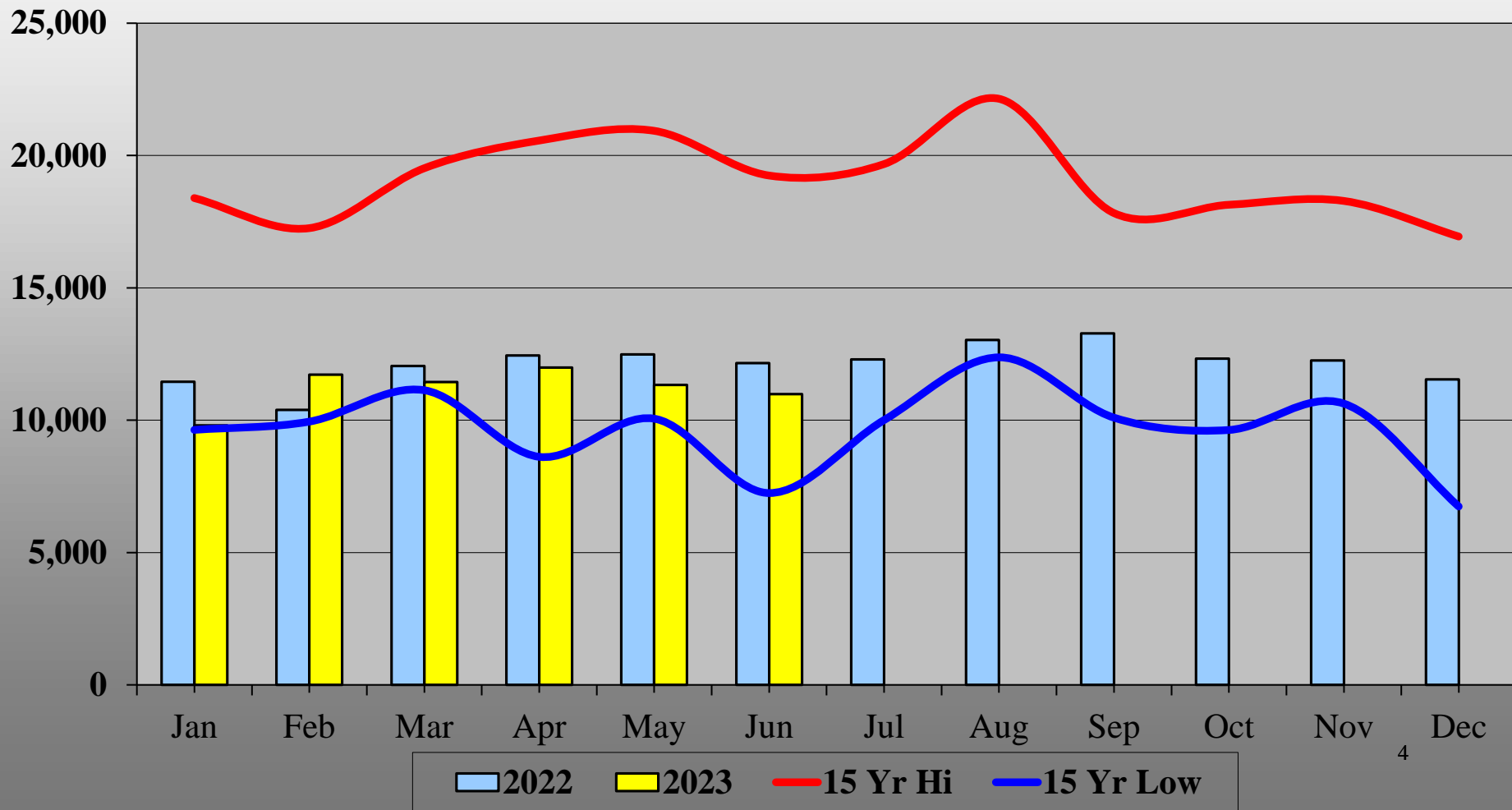
Annual Enplanements

■ Actual ■ Projected





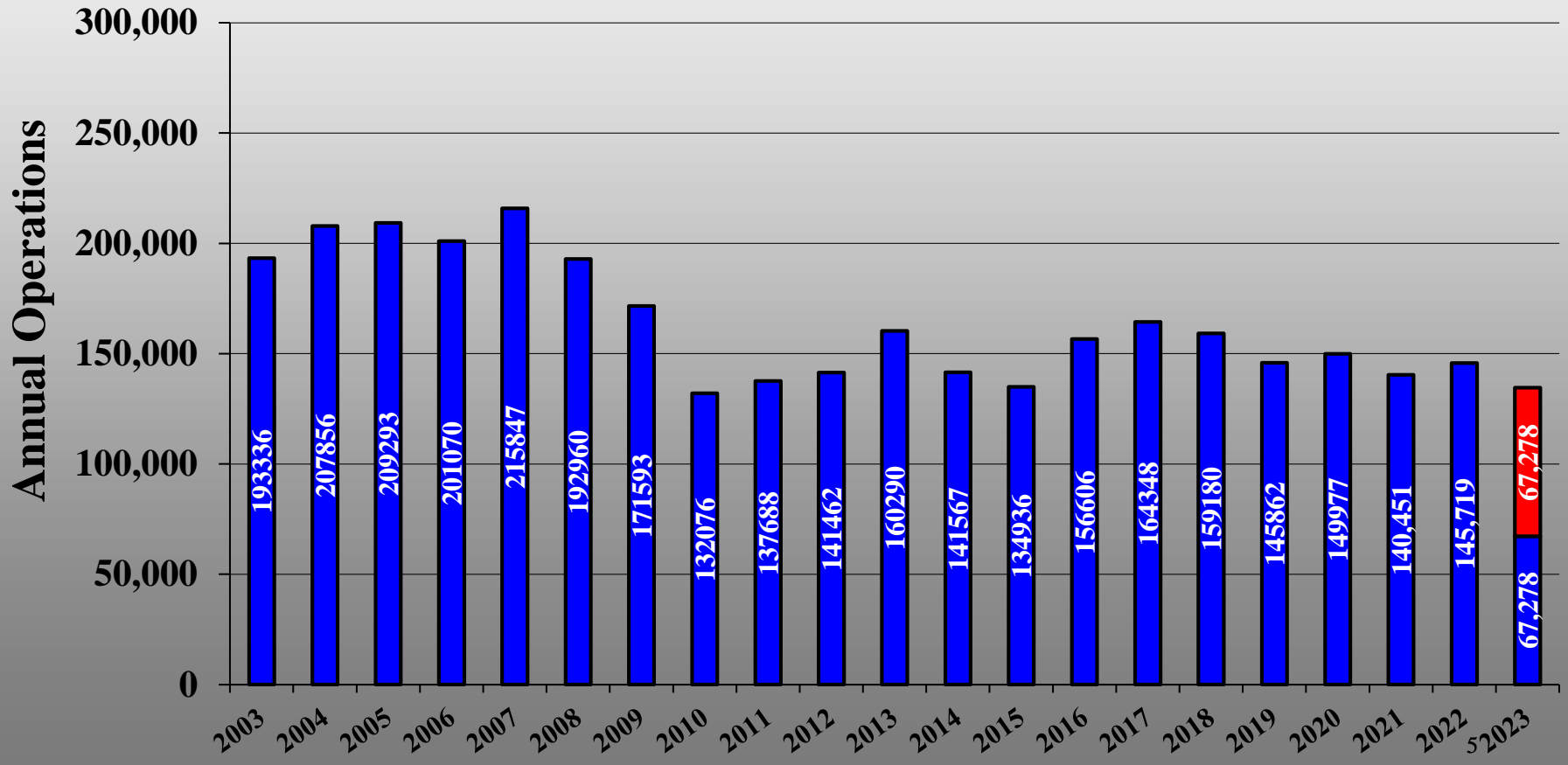
Monthly Take-Off & Landing Count





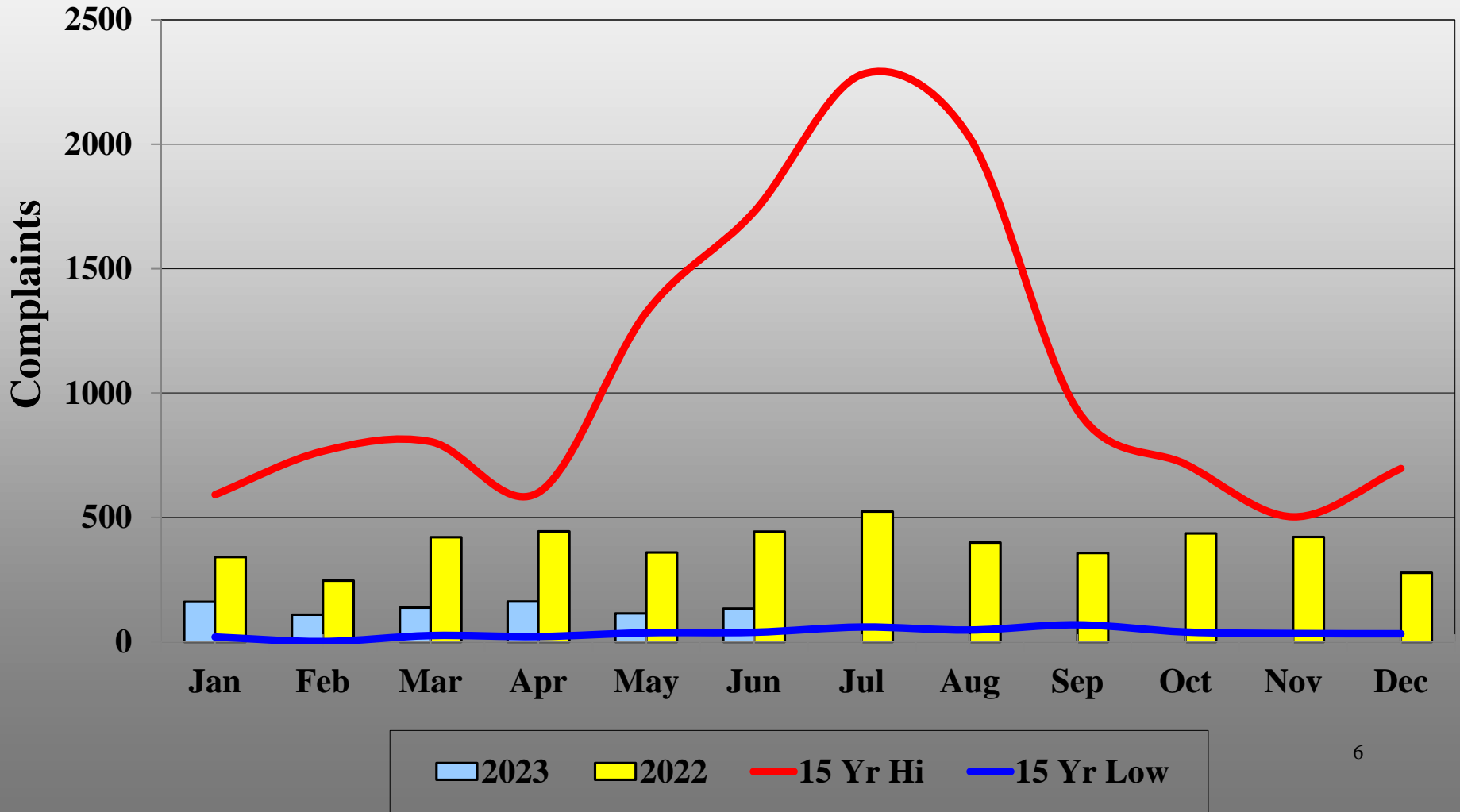
Annual Take-Off & Landing Count

■ Actual
 ■ Projected

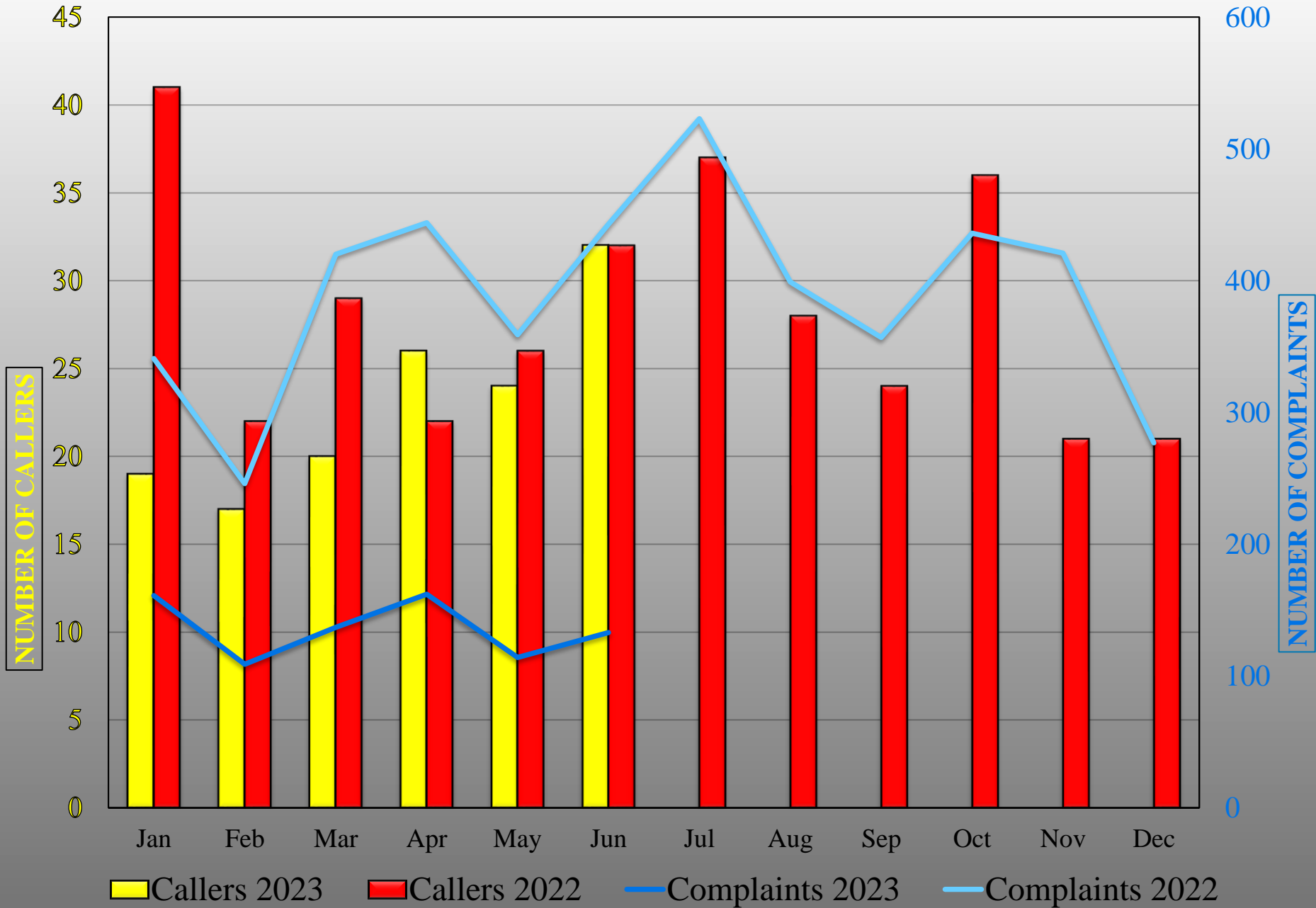




Total Monthly Complaints



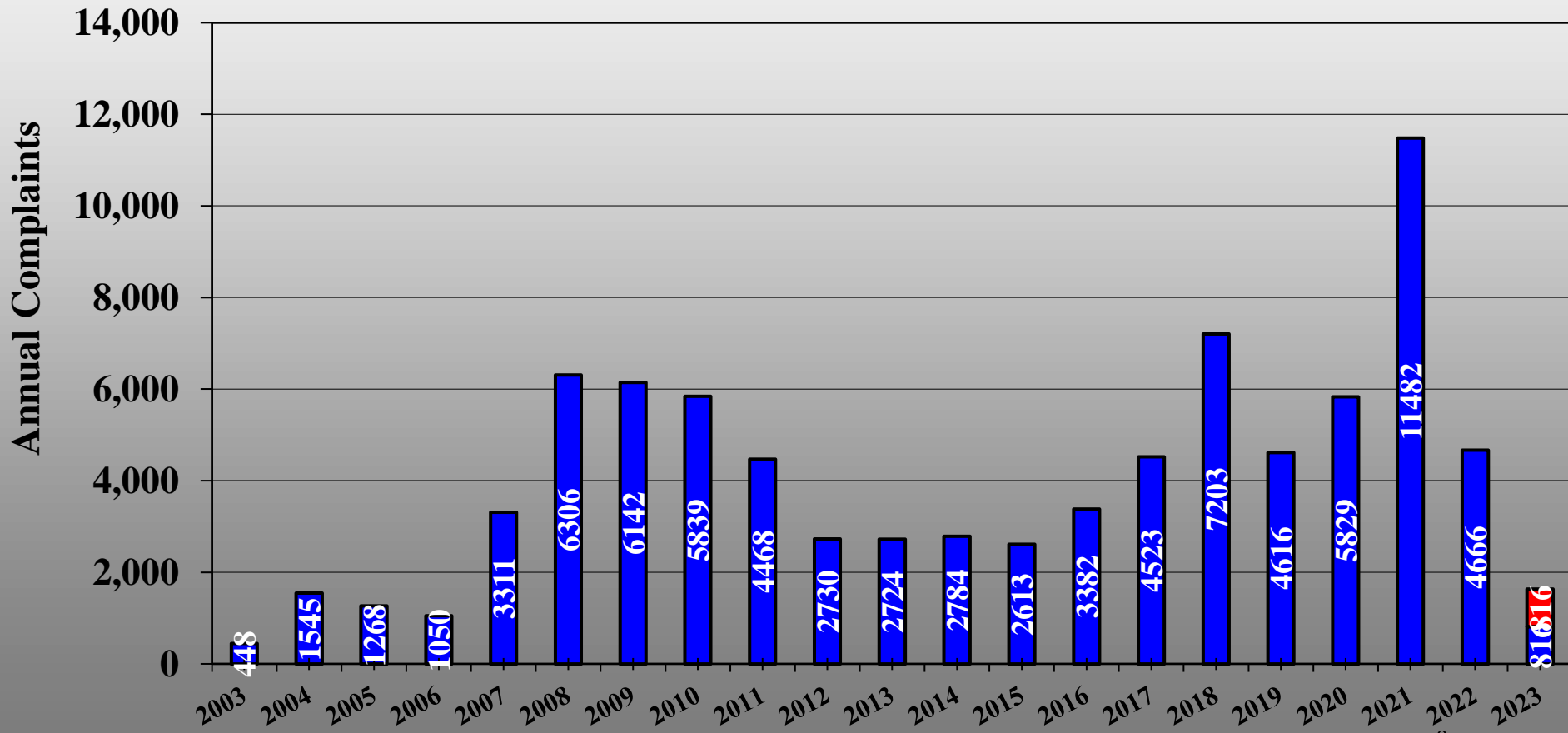
Callers & Complaints





Annual Complaints

■ Actual
 ■ Projected





Complaints by Quadrant

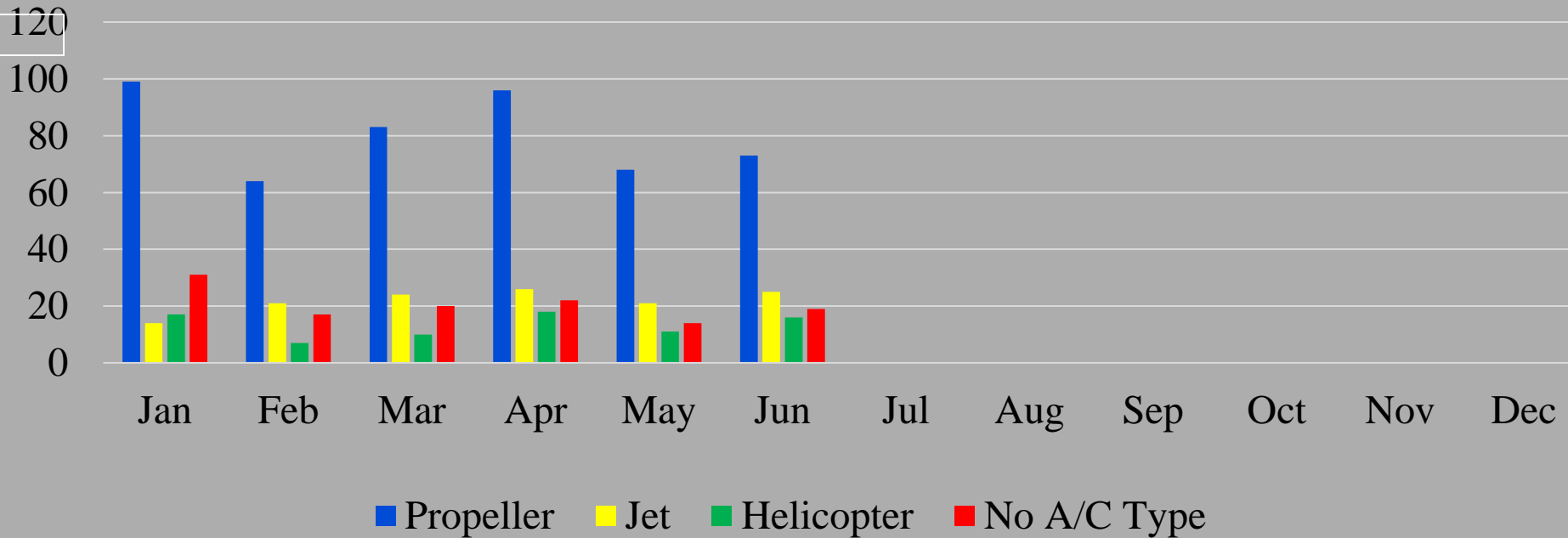
	Total Callers	Total Complaints	Filtered* Complaints
NW	7	61	34
SW	10	43	20
SE	12	22	8
NE	3	7	7
Total	32	133	69

69% of complaints were from 3 callers.

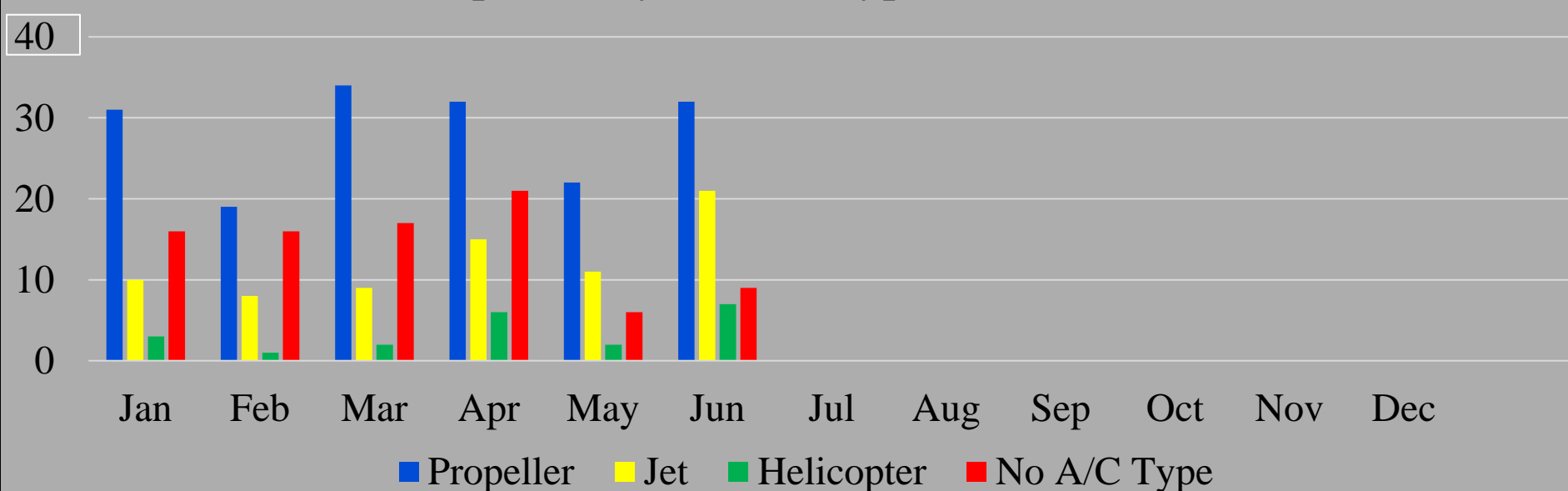
*In the filtered data set, the top 3 caller's complaints were reduced to the average number of complaints reported by the other callers.

** 0 complaints from 0 caller was not included. **

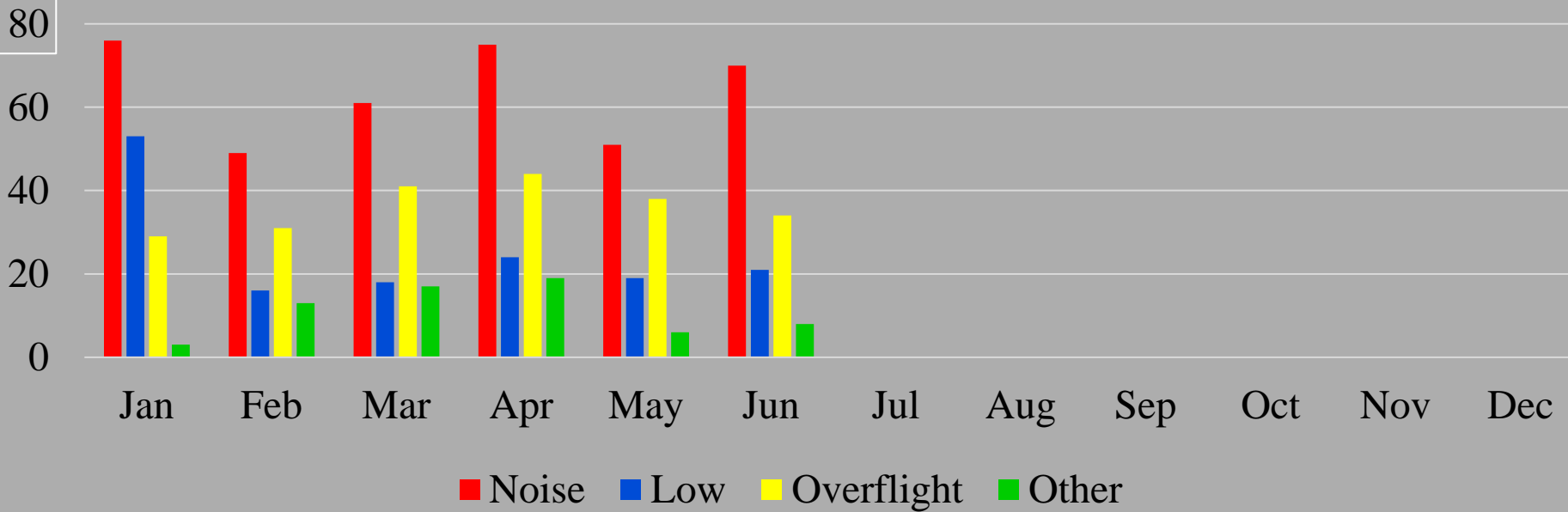
Complaints by Aircraft Type - All Data



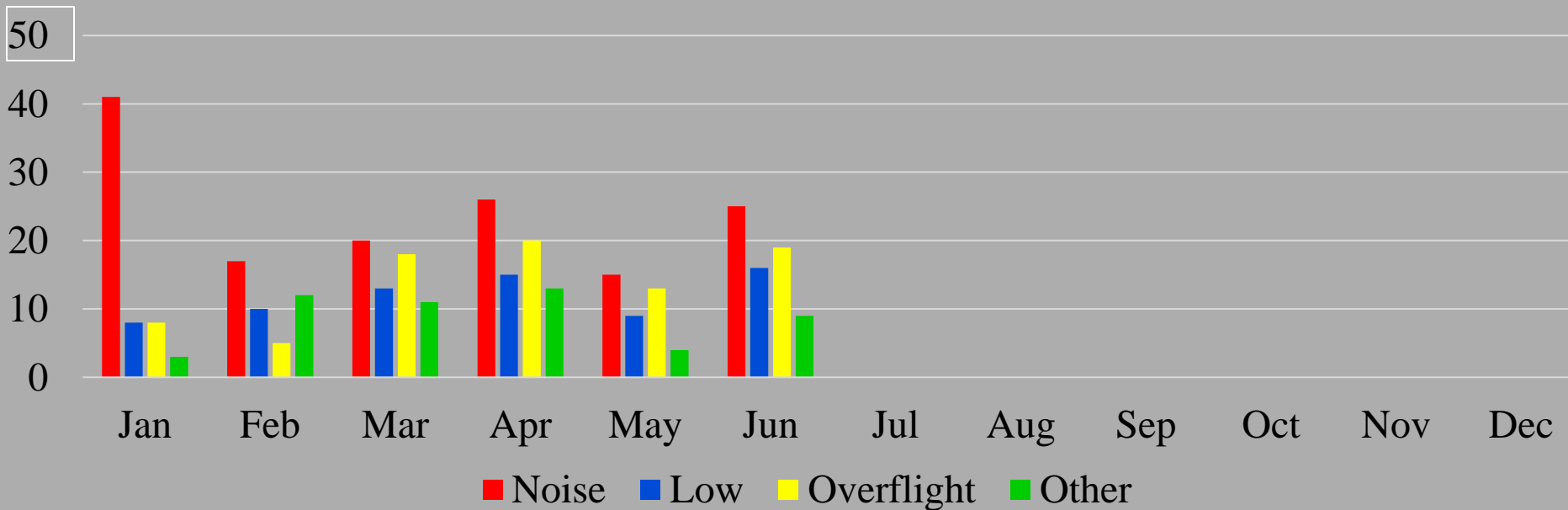
Complaints by Aircraft Type - Filtered Data



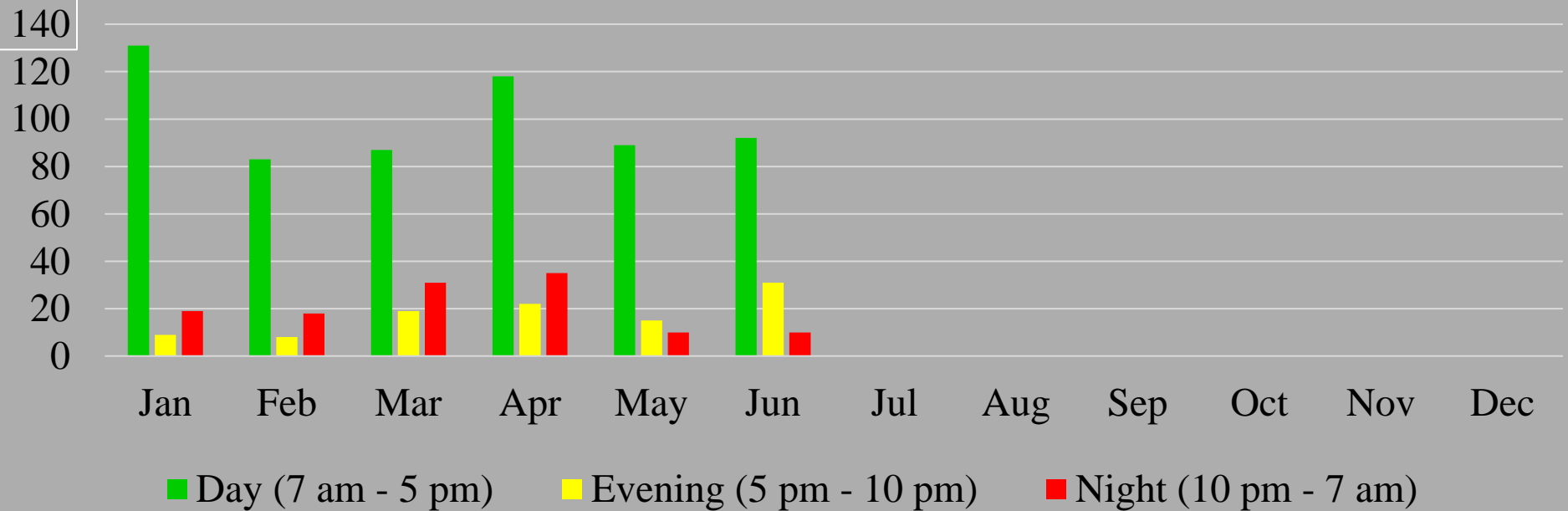
Complaints by Category - All Data



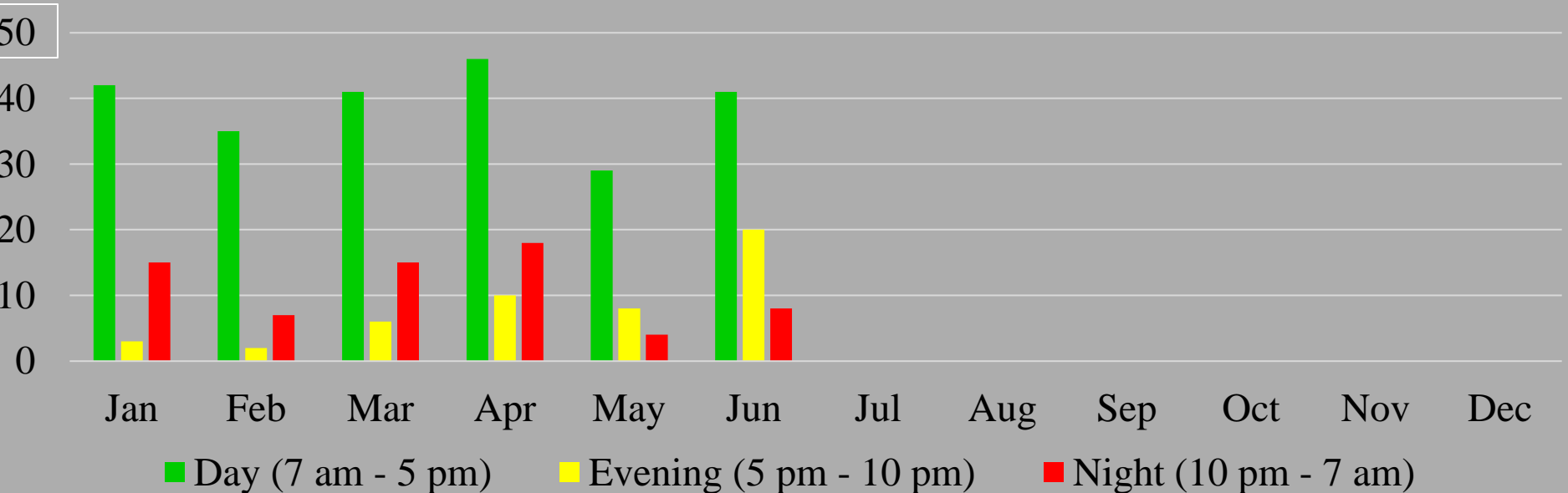
Complaints by Category - Filtered Data



Complaints by Time of Day - All Data



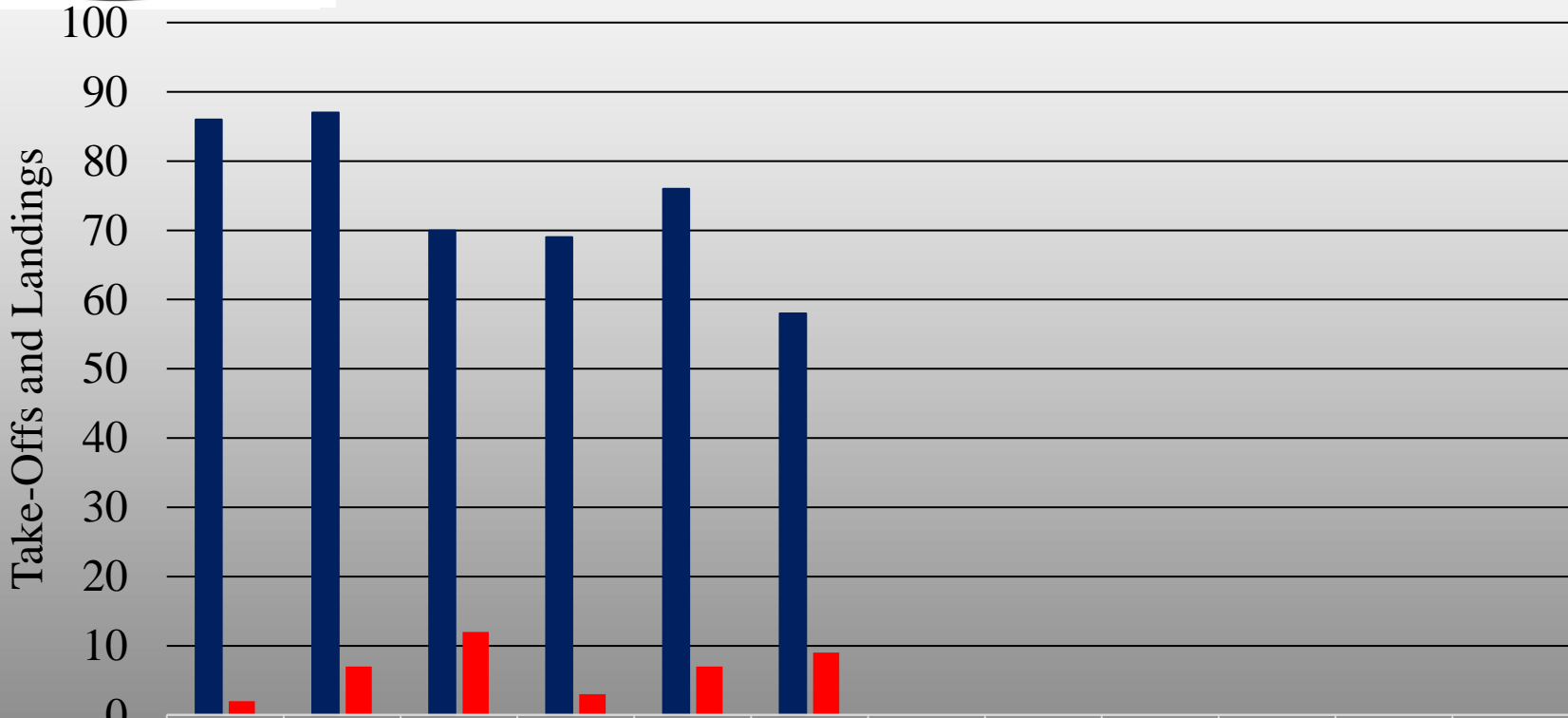
Complaints by Time of Day - Filtered Data





Flights During Voluntary Quiet Hours

Jets 10:00pm-7:00am, Props 12:00am-6:00am

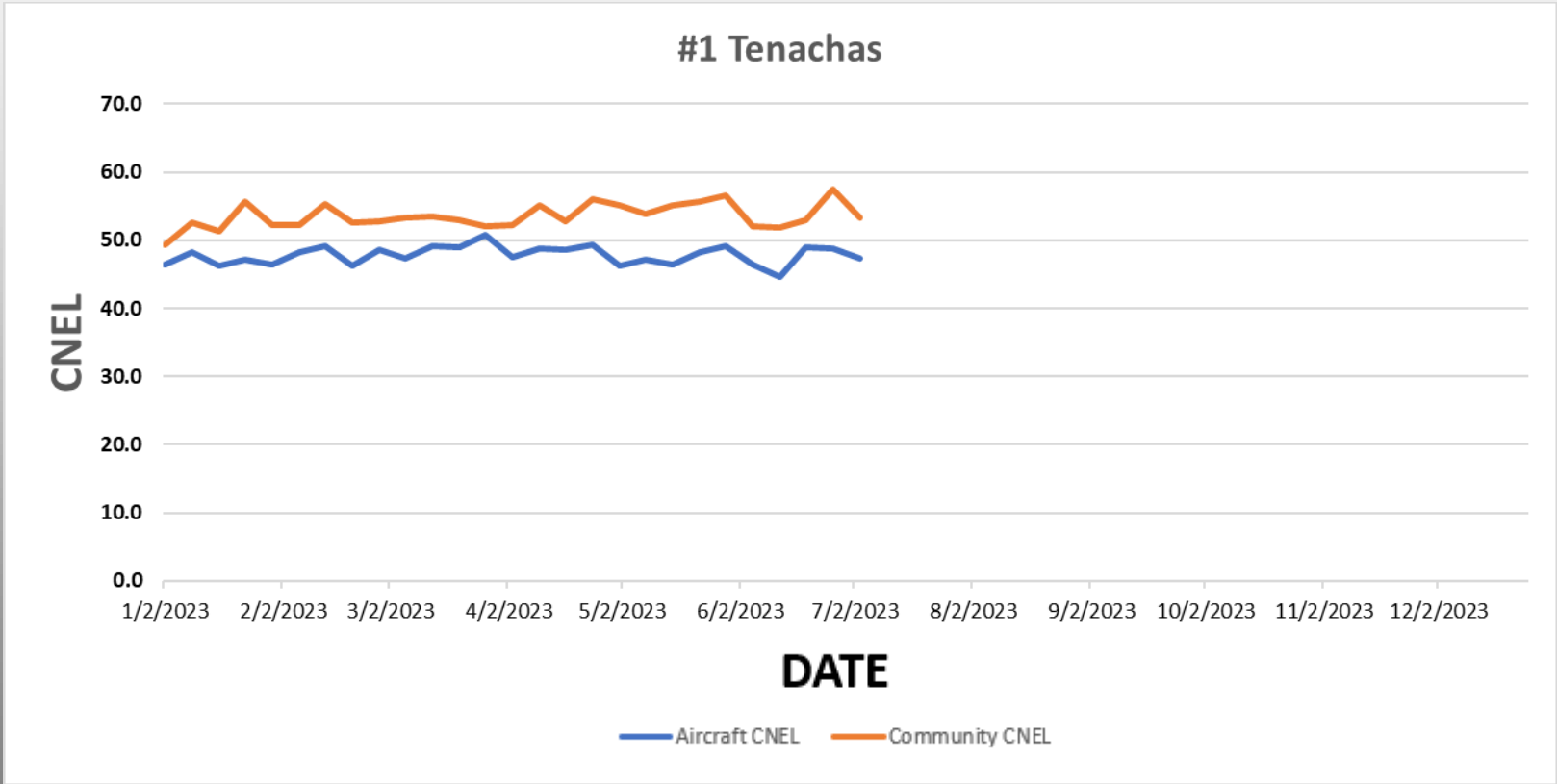


	Jan	Feb	Mar	Apr	May	Jun	Jul	Aug	Sep	Oct	Nov	Dec
■ Jet	86	87	70	69	76	58						
■ Propeller	2	7	12	3	7	9						

■ Jet ■ Propeller



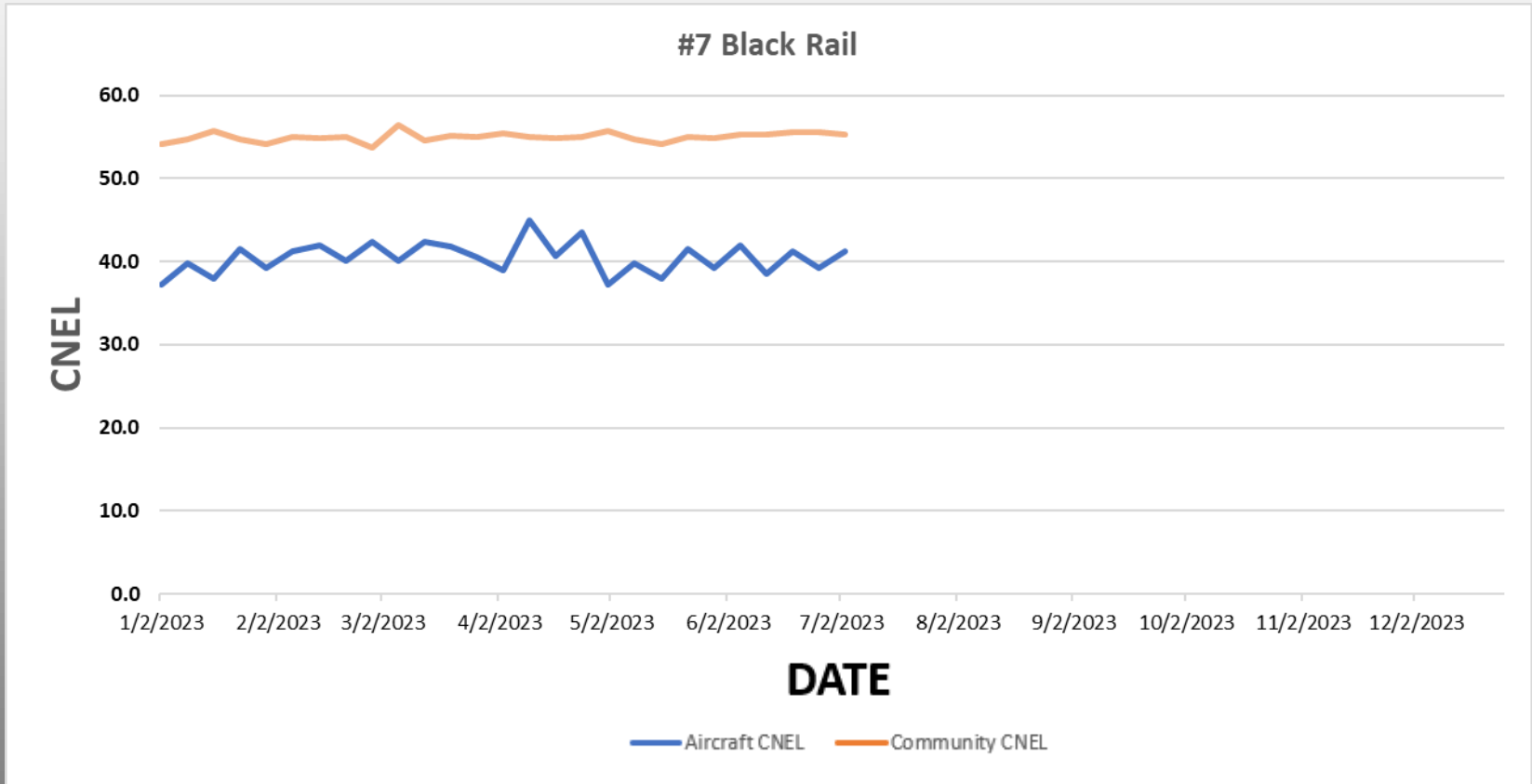
ANNUAL REVIEW OF NOISE MIC DATA





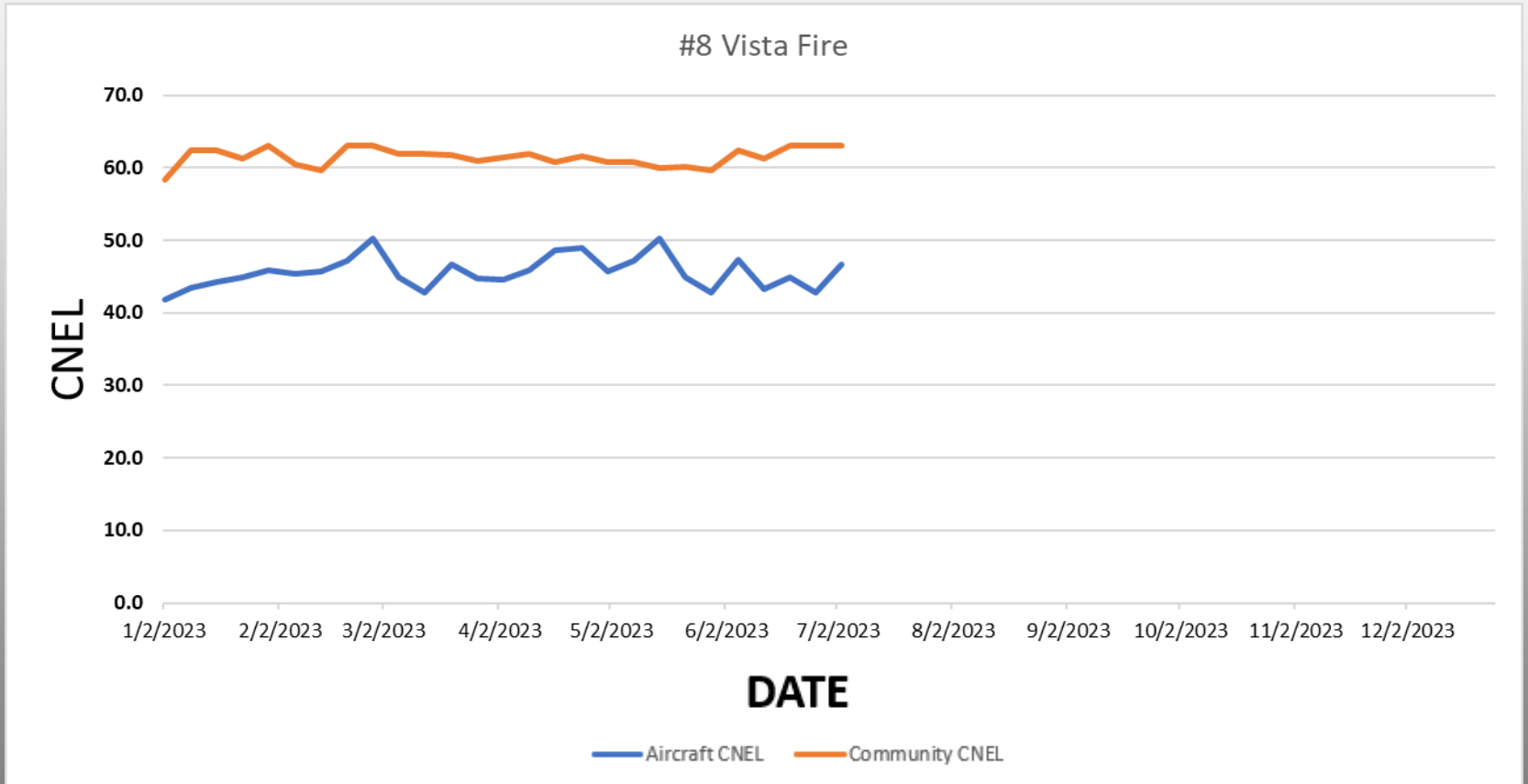
Airport

ANNUAL REVIEW OF NOISE MIC DATA



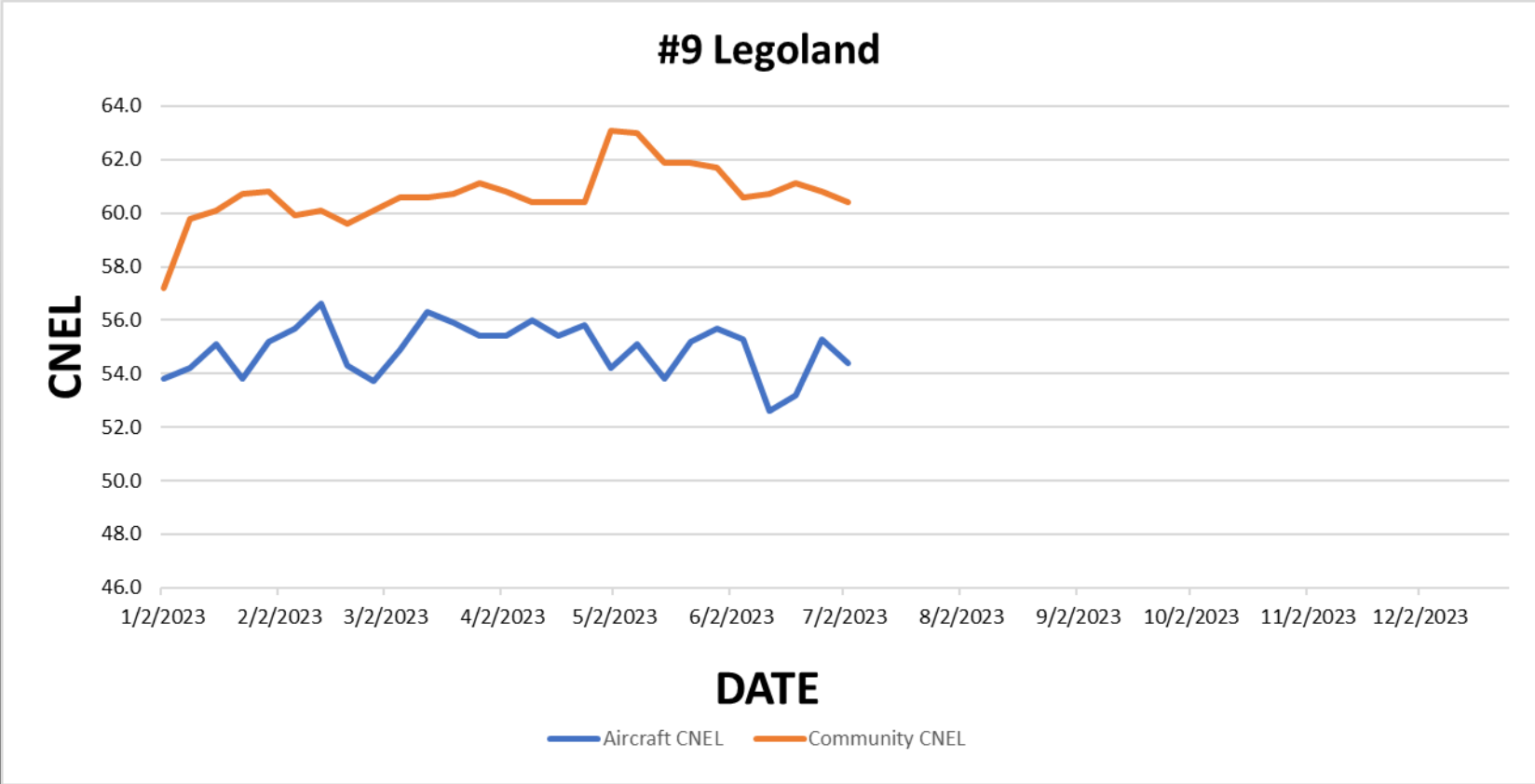


ANNUAL REVIEW OF NOISE MIC DATA





ANNUAL REVIEW OF NOISE MIC DATA





June 2023

Questions or Comments?