



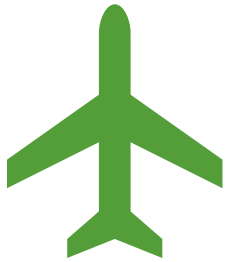
COUNTY OF SAN DIEGO  
DEPARTMENT OF  
PUBLIC WORKS

# Palomar Airport Advisory Committee

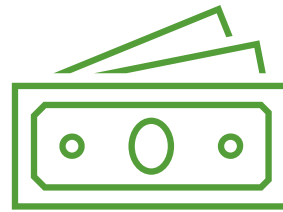
Sept 18, 2025

# Director's Report

---



FAA Roundtable



County Budget



Leasing Practices

# Save the Date - FAA Roundtable

October 22 from 5:00-7:00 p.m.



Submit your questions in advance



Sign up link posted on our website today

# County Airport Budget

Airport Enterprise Fund (AEF) is self-sustaining

No support received from General Fund or any County fund

Federal grants support capital projects

# Airport Enterprise Funding Sources

Rents & Leases  
- Aviation &  
Industrial

Grants &  
Allocations

Fuel Flowage  
Royalties &  
Sales

Parking  
Revenue

Passenger  
Facility Charges  
(PFC)

Customs Fees

Permits/Misc.

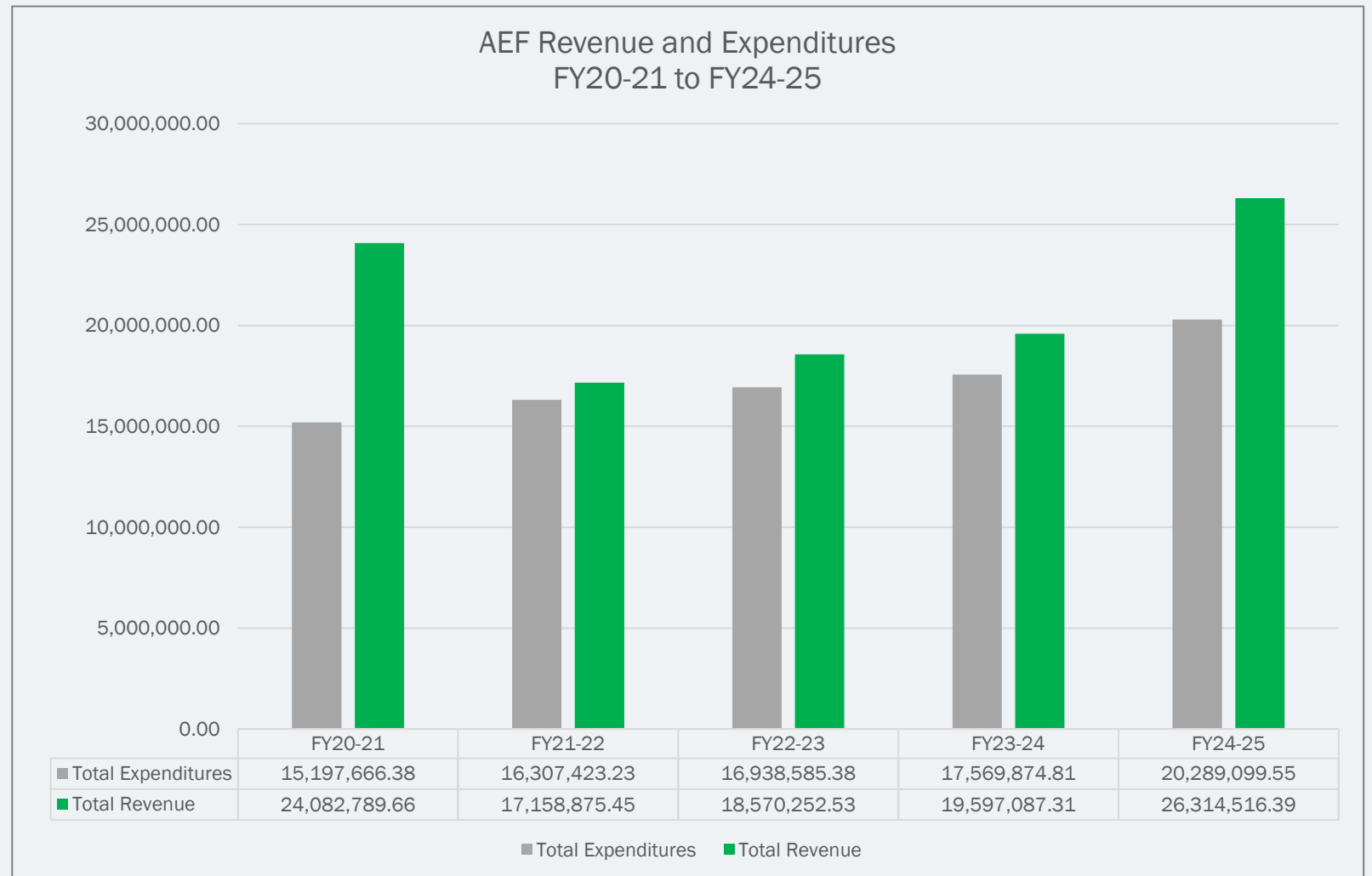
Interest  
Earned

Landing Fees

Tie down Fees

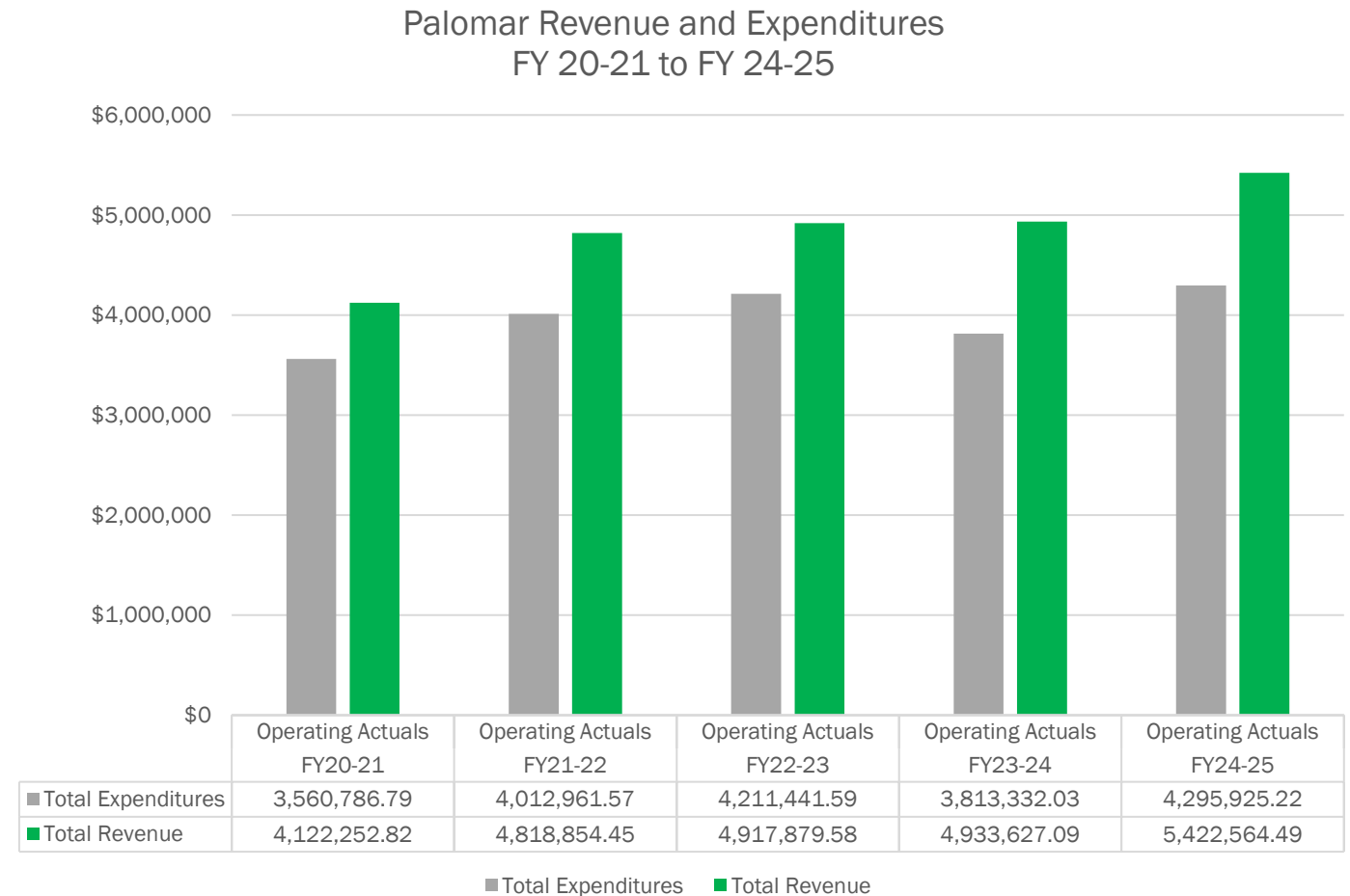
# AEF Budget Overview

- Healthy fund balance
- Revenue exceeds expenses
- Year over year growth
- County provides these services at no cost to the General Fund
- Airport operations are self-sustaining



# Palomar Overview

- Each airport shares revenue from the AEF
- Palomar \$5+ million
- Business and aviation leases



# Airport Leasing Functions



Leasing  
Development  
Permits



Property  
Management



Leasehold  
Compliance



Track Revenues



Rent  
Negotiation

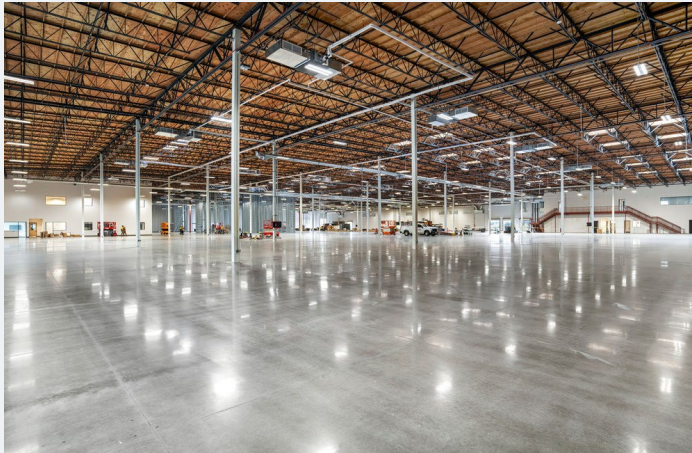


Land Acquisition



CEQA  
compliance

# Leasing Practices





COUNTY OF SAN DIEGO  
DEPARTMENT OF  
PUBLIC WORKS

# Palomar Airport Advisory Committee

September 18, 2025