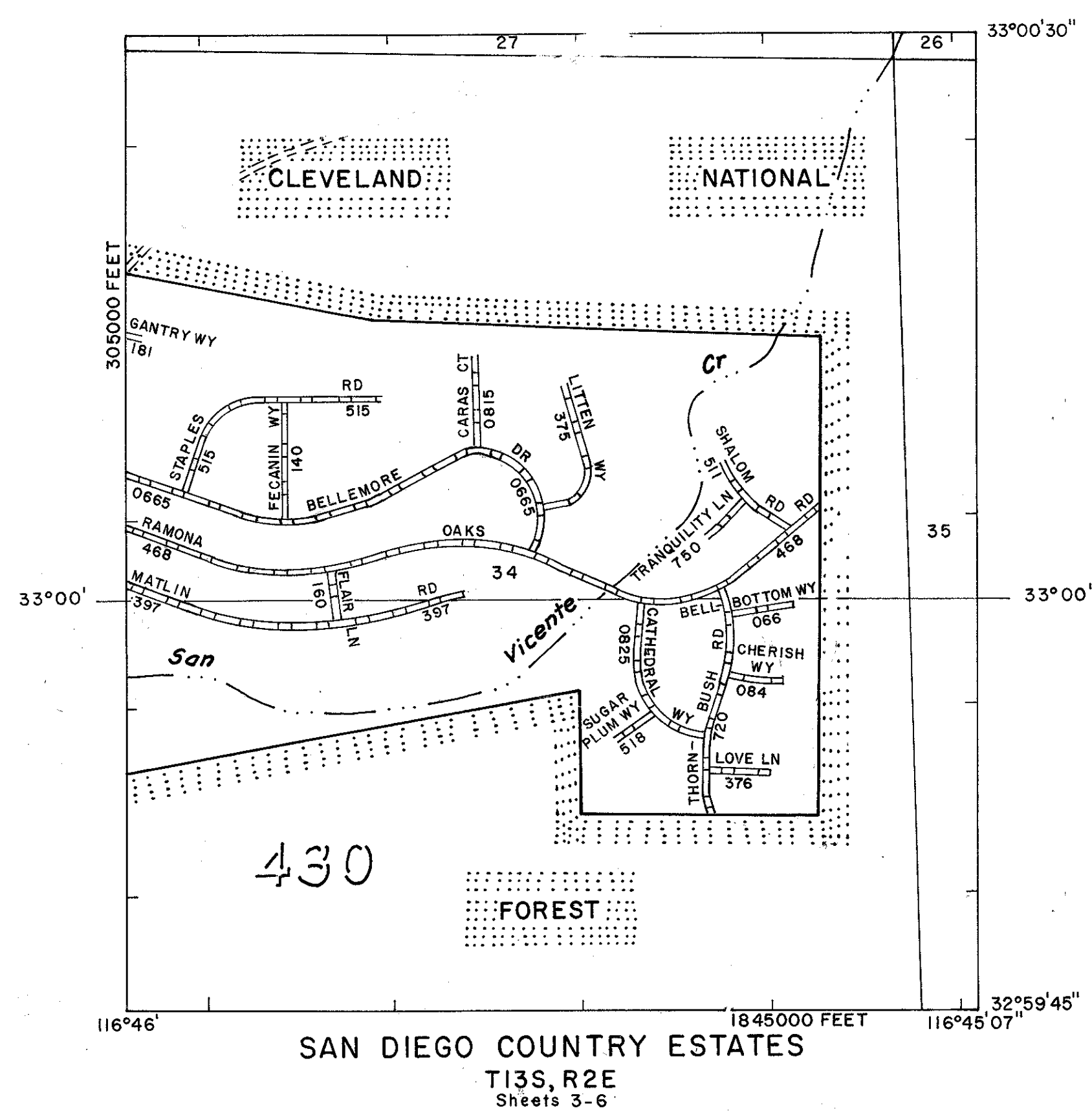
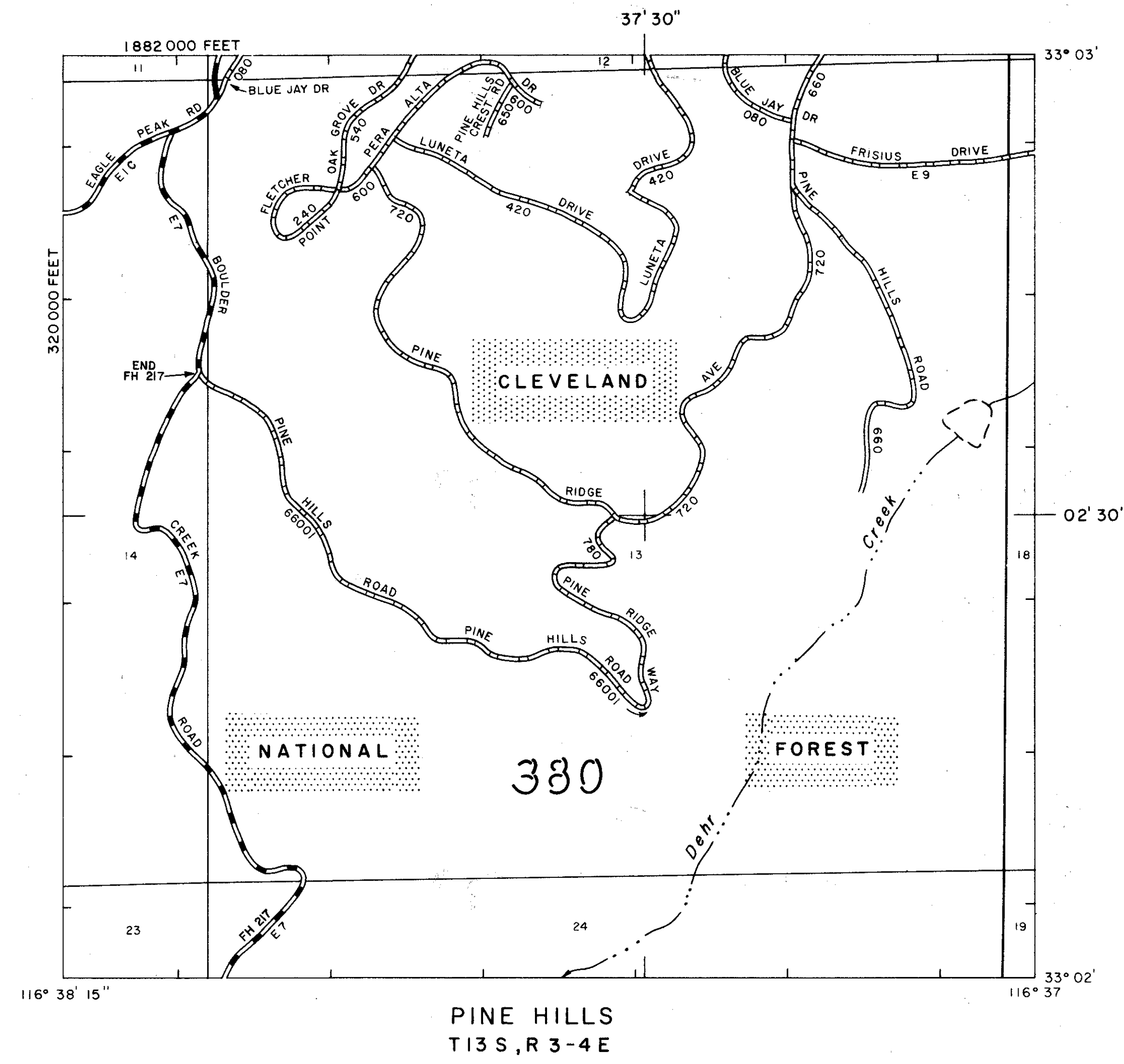
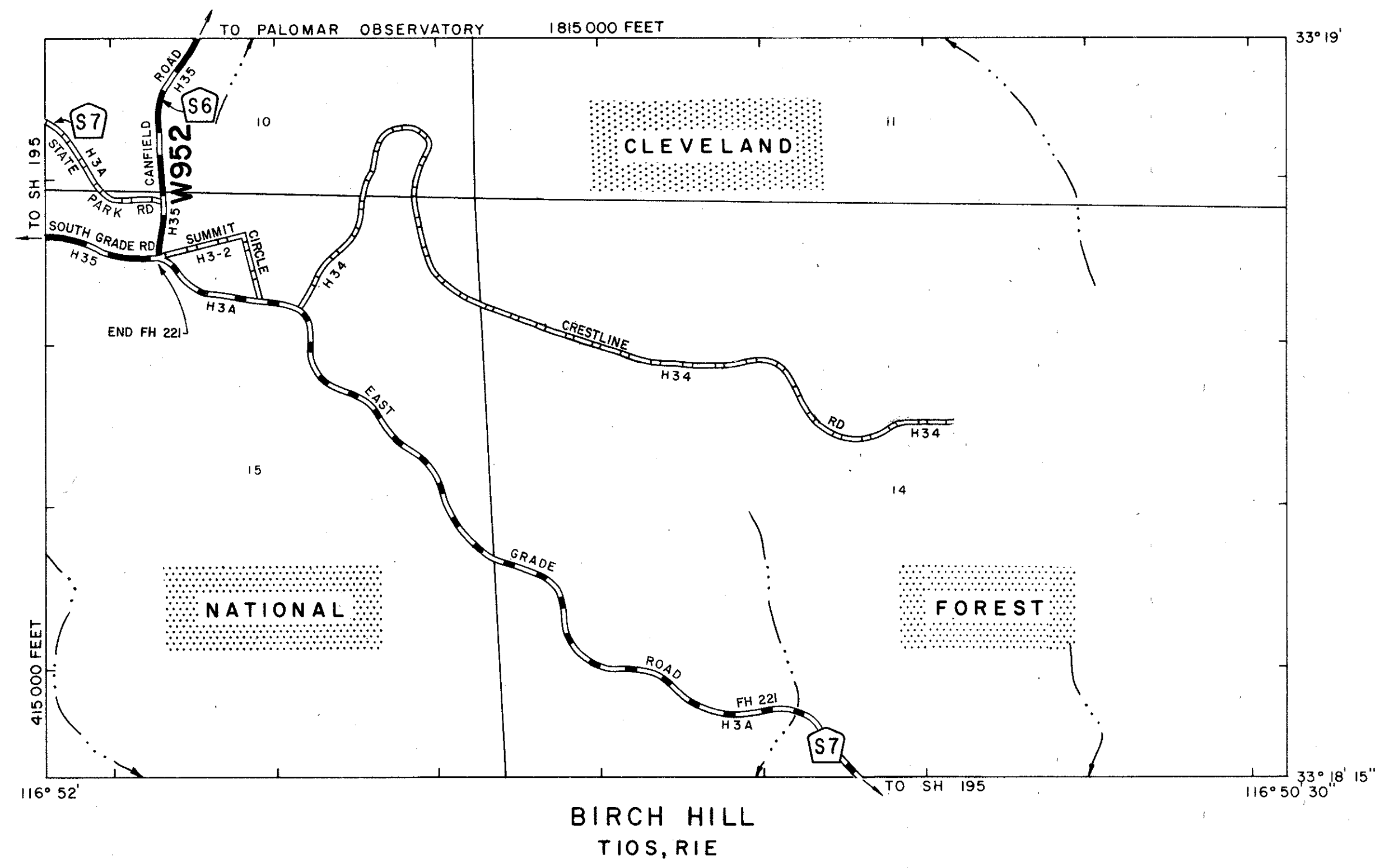
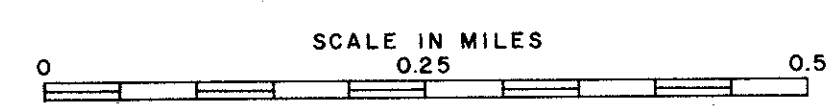


A B C D E F G H J K L M N O P Q R



1
2
3
4
5
6
7
8
9
10
11
12

DATE RELEASED	
MAY 1962	
REVISED	
MAY 28, 63	
MAY 28, 64	
MAY 25, 65	
MAY 5, 66	
MAY 3, 67	
JUN 24, 69	
MAY 5, 69	
MAY 5, 70	
MAY 25, 71	



STATE OF CALIFORNIA
TRANSPORTATION AGENCY
DEPARTMENT OF PUBLIC WORKS
DIVISION OF HIGHWAYS
IN COOPERATION WITH THE
U. S. DEPARTMENT OF TRANSPORTATION
FEDERAL HIGHWAY ADMINISTRATION
BUREAU OF PUBLIC ROADS
AND THE COUNTY

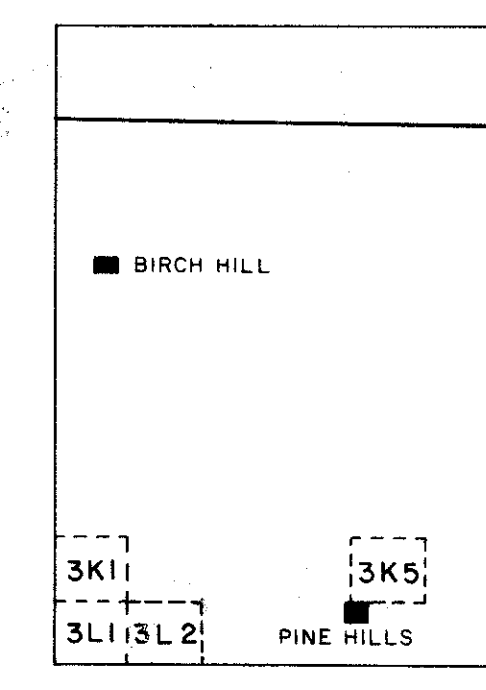
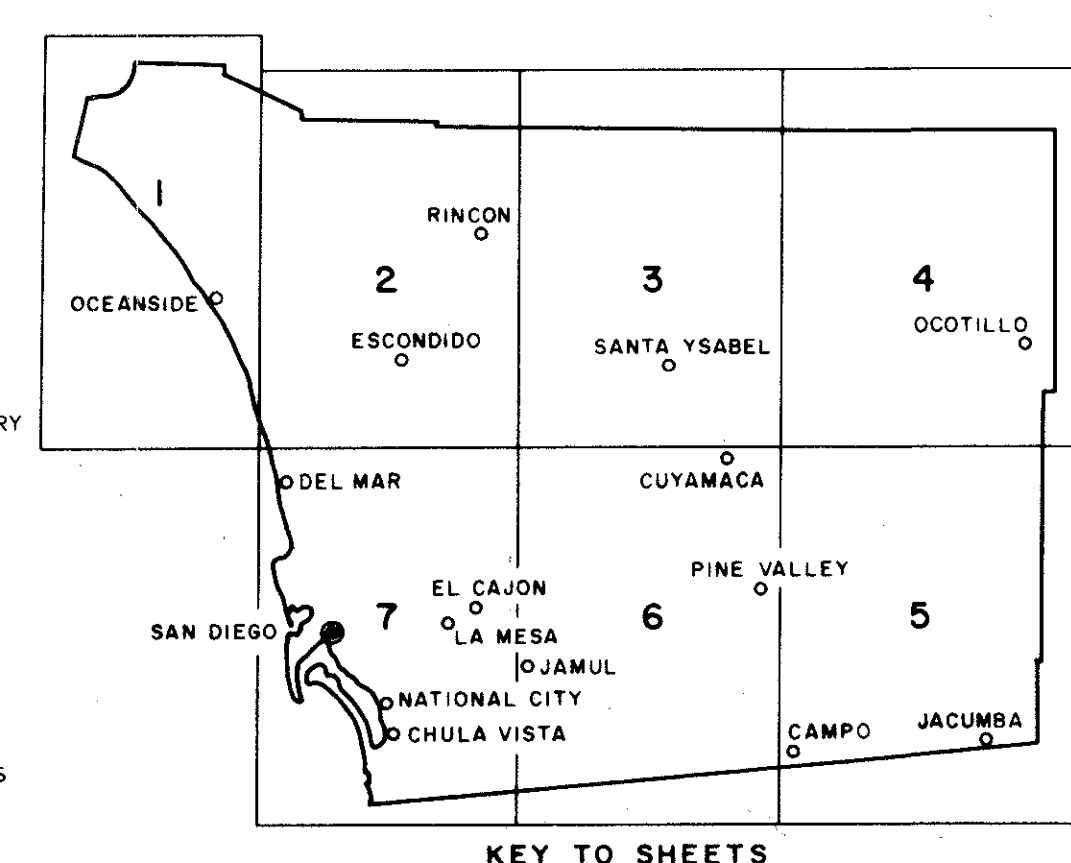


ROAD SYSTEMS	
	STATE HIGHWAY ROUTE NO.
	URBAN
	SELECT SYSTEM REPEALED
	SELECT-ARTERIAL
	SELECT-COLLECTOR
	MINOR
	ALL OTHER ROADS
	FAS V234
	FEDERAL AID ROUTE NO.

LEGEND

SIGN ROUTES	
	INTERSTATE
	U. S.
	STATE
	COUNTY
	HIGHWAY BRIDGE
	FORD
	TUNNEL
	GRADE SEPARATION

	STATE BOUNDARY
	COUNTY BOUNDARY
	CITY BOUNDARY
	PARK OR RESERVATION BOUNDARY
	STATE CAPITAL
	COUNTY SEAT
	TOWN CENTER
	MILITARY AIRPORT
	AIRFIELD OR LANDING STRIP
	AIRPORT COMPLETE FACILITIES



DATE REVISED	
12-31-61	CO. MAINT. SYSTEM
	CO. SELECT.
	CITY SELECT.
	CITY ANNEXATION
6-18-76	FAS
	FAS II
	URBAN I (M-1)

MAIN MAPS 1"=1 MILE	ENLARGEMENTS 6"=1 MILE	TOTAL No. OF SHEETS
SHEET No. 7	321	107
		114

BASE MAP MADE IN 1962 - REVISED CONTINUOUSLY