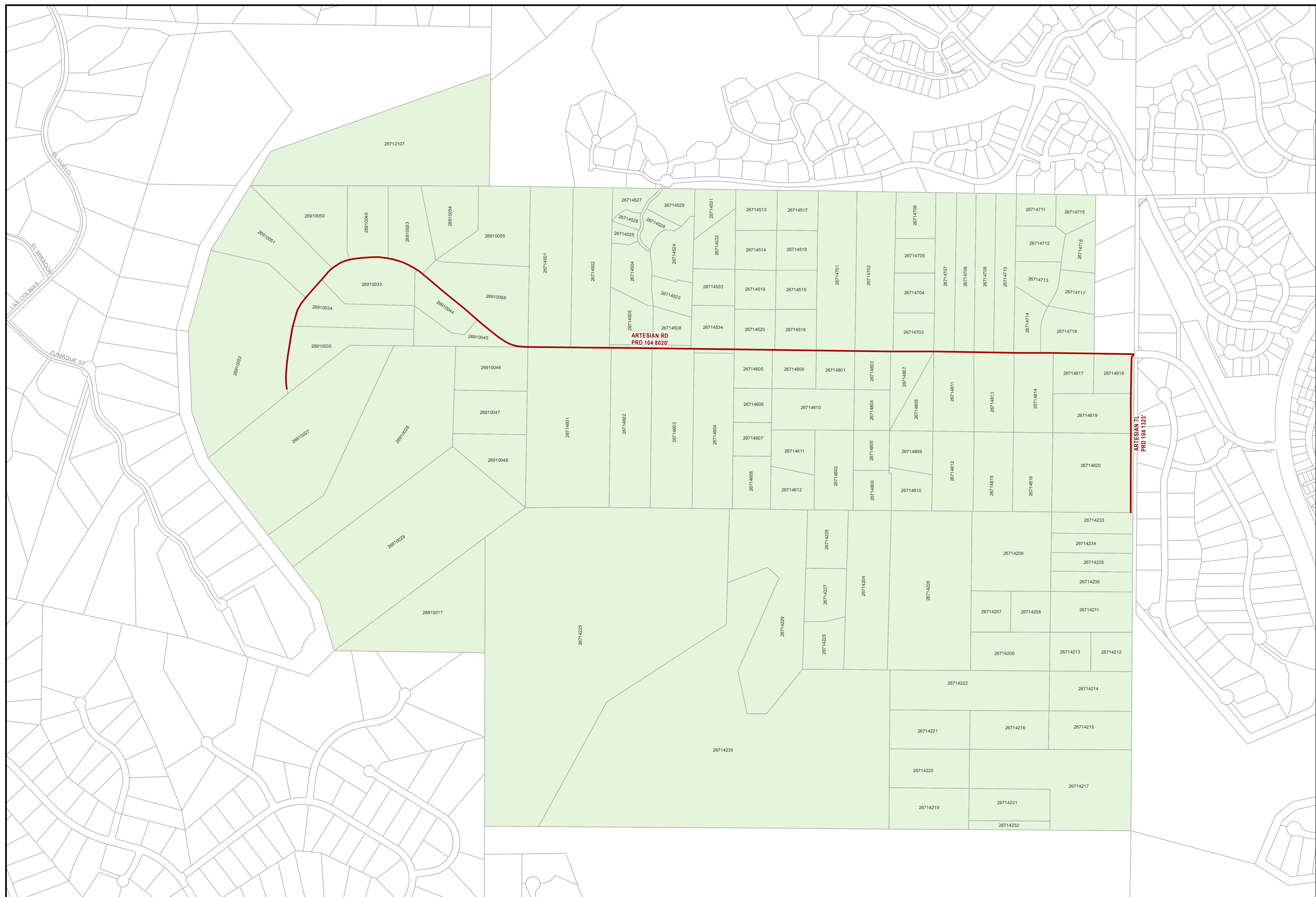


1 inch = 340 feet

 PRD Parcel  
 Road Maintained by PRD



**County of San Diego**  
**Planning & Development Services**  
**Land Use & Environment Group**  
**Geographic Information Service**

THIS MAP/DATA IS PROVIDED WITHOUT WARRANTY OF ANY KIND, EITHER EXPRESS OR IMPLIED, INCLUDING BUT NOT LIMITED TO, THE IMPLIED WARRANTIES OF MERCHANTABILITY AND FITNESS FOR A PARTICULAR PURPOSE. Note: This product may contain information from the SANDAG Regional Information System which cannot be reproduced without the written permission of SANDAG. This product may contain information reproduced with permission granted by Intel Mobility & Computing to SanGIS. The map is copyright by Intel Mobility & Computing. It is unlawful to copy or reproduce all or any part thereof, whether for personal use or resale, without the prior written permission of Intel Mobility & Computing. Copyright SanGIS 2012. All Rights Reserved. Full text of the legal notice can be found at: [http://www.sandag.org/legis\\_notice.htm](http://www.sandag.org/legis_notice.htm)

# PERMANENT ROAD DIVISION — ARTESIAN ROAD 104