

Rancho Santa Fe Roundabouts

Community Meeting



County of San Diego — Department of Public Works

Rancho Santa Fe Roundabouts Project



Tonight's Meeting Overview

1. **Welcome! County Team Introductions** *(6:05pm -5 mins)*
2. **Project Overview Powerpoint Presentation** *(6:10pm -15-20 min)*
 - A. Project Background, Objectives & Status
 - B. Intersection Overview: Approach to design
 - C. Schedule & Next Steps
 - D. Community Review & Input
 - i. Project Website, Exhibits
 - ii. Community Comment Submittal
3. **Questions & Answers, Technical Exhibits Review**
(6:30-7:30pm- until event concludes)



County of San Diego — Department of Public Works

Rancho Santa Fe Roundabouts Project

Three Takeaway Points!

1. *Project Milestone!*

\$3M TransNet Construction Funding available mid-2027

Construction of eastern roundabout: Paseo Delicias/Del Dios Rd @ El Camino del Norte

2. *Review Exhibits & Ask Questions of our Technical Staff!*

Design Engineers, Traffic Engineers, Landscape Architecture, Environmental, Funding...

3. *Community Input!*

Staff is seeking input on project design- please share your thoughts on layouts, aesthetics, landscaping/lighting, bicycle/pedestrian/equestrian facilities, etc.

Comment cards, project website comments, emails, send them all our way!



Project Background & Status



- Address vehicular queuing & congestion
- Traffic Study proposed three roundabouts for continuous traffic flow through Paseo Delicias corridor
- 2016: Board of Supervisors approval
 - Project Environmental Impact Report (EIR) certified
- 2020: Board provided funding to complete engineering plans
- 2024: \$3M TransNet programmed for mid-2027, construction funding: eastern intersection



County of San Diego — Department of Public Works

Rancho Santa Fe Roundabouts Project

Project Objectives

- Safe & continuous traffic flow through Paseo Delicias corridor
- Safe & accessible intersections for pedestrians, equestrians, bicyclists
- Current engineering standards
- Stormwater drainage improvements, Greenstreets infrastructure
- Consistency with historic community character
- Minimize property owner impacts



Roundabout Design Elements



Continuous flow of traffic

Intersection moves more vehicles at a time

Vehicles yield to one travel lane, instead of each intersection leg



Using geometry to control speed

Curves & splitter islands require driver attention

Enhanced visibility as approaching intersection

Entrance deceleration, exit acceleration



Each intersection: 105' diameter

Tapered approach travel lane

Wide circulatory travel lane

Rolled apron curb for large/emergency vehicles



County of San Diego — Department of Public Works

Rancho Santa Fe Roundabouts Project

Roundabout Design Elements

Intersection Visibility & Safety:

- Pedestrian, equestrian crossings:
 - Rectangular Rapid Flashing Beacons (RRFB)
Using example from La Granada intersection
Activated by ped and equestrian height push buttons
 - Pole-mounted light fixtures next to pedestrian curb ramps
 - Downward facing, 15' high, color temperature “mimics moonlight” 110 watts



- Standard roundabout signage
 - Minimal safety lighting



Project Design Elements

Sustainability:

- Reduce fuel consumption and idling-less emissions
- Green Streets Design
 - Updated drainage strategy
 - Permeable pavement
 - Low-water plant palette
- Low-wattage, directional lighting
- Improve options for non-vehicular transport



Artemisia californica
California Sagebrush



Encelia californica
California Encelia



Mimulus spp.
Monkey Flower



Rosmarinus officinalis
Upright Rosemary

MEDIUM SHRUBS



Arctostaphylos x 'Emerald Carpet'
Emerald Carpet Manzanita



Festuca californica
California Fescue



Muhlenbergia rigens
Deergrass



Achillea millefolium
Common Yarrow

GROUNDCOVERS / GRASSES



Design Updates

- Updated federal roundabout design guidance
- Speed reductions through intersection
- Designed to allow turning for 40-foot vehicle
 - Larger vehicles use rolled curb on truck apron
- Bicycles to use full lane
- Consistency with County Trails Master Plan
- Reduction in private parcel impacts
- Minimal lighting



County of San Diego — Department of Public Works

Rancho Santa Fe Roundabouts Project

Intersection Review

Eastern Roundabout:

**Paseo Delicias/Del Dios Rd
at El Camino del Norte**



Paseo Delicias/Del Dios Rd at El Camino del Norte

Existing Condition: Aerial Photo of the Intersection of Paseo Delicias and El Camino del Norte



Existing Condition:

- High volume route between the I-15 and I-5
- High speeds through intersection
- Difficult for cross traffic to turn
- No pedestrian or equestrian crossing
- Outdated drainage structures
- Environmentally Sensitive Areas (ESAs)

Objectives:

- Speed reduction
- Increase visibility of cross traffic, reduce delays
- Provide safe passage for pedestrian, equestrian, bicyclists
- Minimal design to limit impact to ESAs



County of San Diego — Department of Public Works

Rancho Santa Fe Roundabouts Project

Site Plan: Paseo Delicias/Del Dios at El Camino del Norte



Speed Reduction:

- 50mph → 25mph → 17mph within roundabout
- 105' diameter, rolled curb for emergency vehicles

Visibility:

- Enhanced pedestrian crosswalk
- Equestrian trail connectivity
- Bicycles use full lane: Sharrows
- Low-wattage lighting

Landscaping:

- Local plant palette
- Low clearance plants
- Relocate entry monument as focal entry point to historic corridor



County of San Diego — Department of Public Works

Rancho Santa Fe Roundabouts Project

Visual Simulation: Paseo Delicias & Del Dios Rd



County of San Diego — Department of Public Works

Rancho Santa Fe Roundabouts Project

Visual Simulation: Paseo Delicias & Del Dios Rd



County of San Diego — Department of Public Works

Rancho Santa Fe Roundabouts Project

Intersection Review

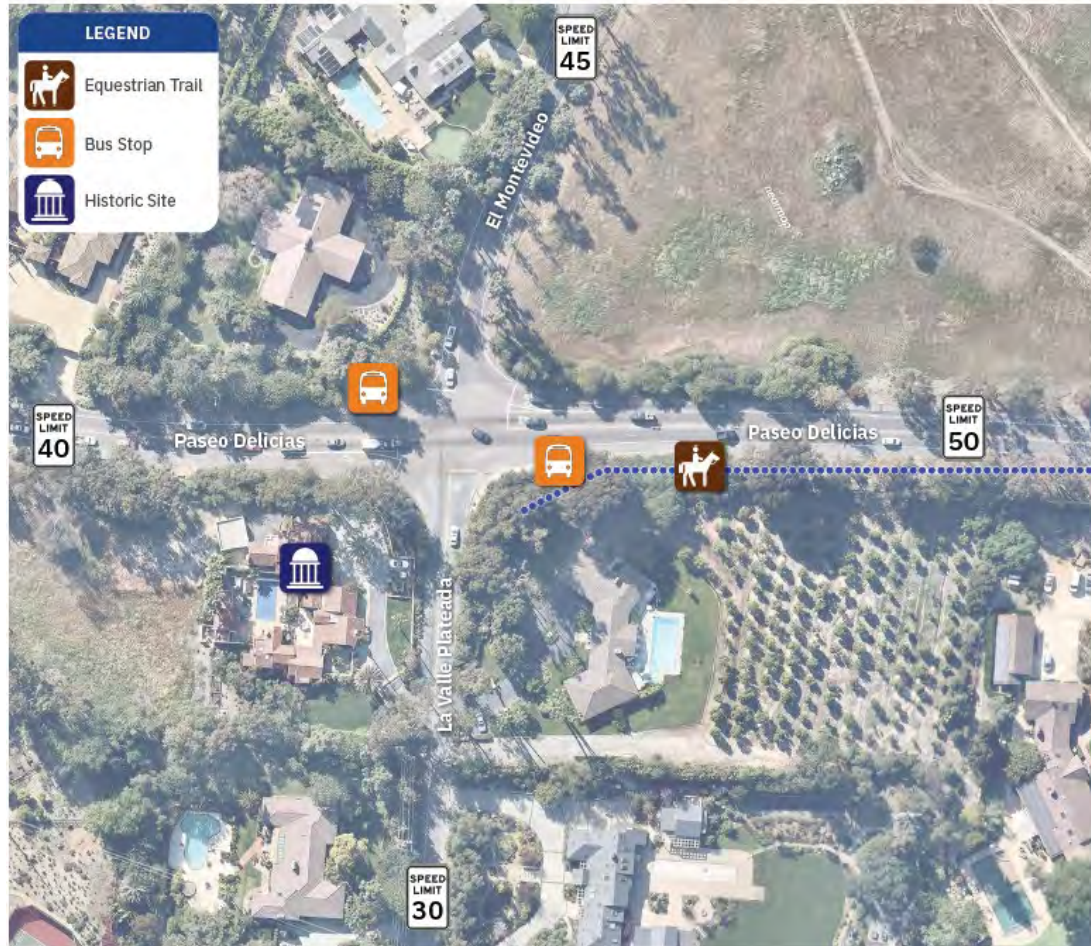
Middle Roundabout:

Paseo Delicias at El Montevideo & La Valle Plateada



Paseo Delicias at El Montevideo/La Valle Plateada

Existing Condition: Aerial Photo of the Intersection of Paseo Delicias and El Montevideo



Existing Condition:

- High speed approach to stop signs
- Bus stops block travel lanes
- 4-way stop- increased delay
- No pedestrian/equestrian facilities
- Historic property at SW corner

Objectives:

- Reduce speed on approach to intersection
- Reduce vehicular delay & queue
- Bus pullouts & shelters
- Increase visibility of cross traffic
- Provide safe passage for pedestrian, equestrian, bicyclists
- Minor roadway vegetation removal



County of San Diego — Department of Public Works

Rancho Santa Fe Roundabouts Project

Site Plan: Paseo Delicias & El Montevideo/La Valle Plateada



Speed Reduction:

- 50mph → 25mph → 17mph
- 105' diameter, rolled curb for emergency vehicles

Visibility:

- Enhanced pedestrian crosswalk
- Bicycles use full lane
- Low-wattage lighting

Landscaping:

- Local plant palette
- Low clearance plants
- Minimal change along historic parcel



County of San Diego — Department of Public Works

Rancho Santa Fe Roundabouts Project

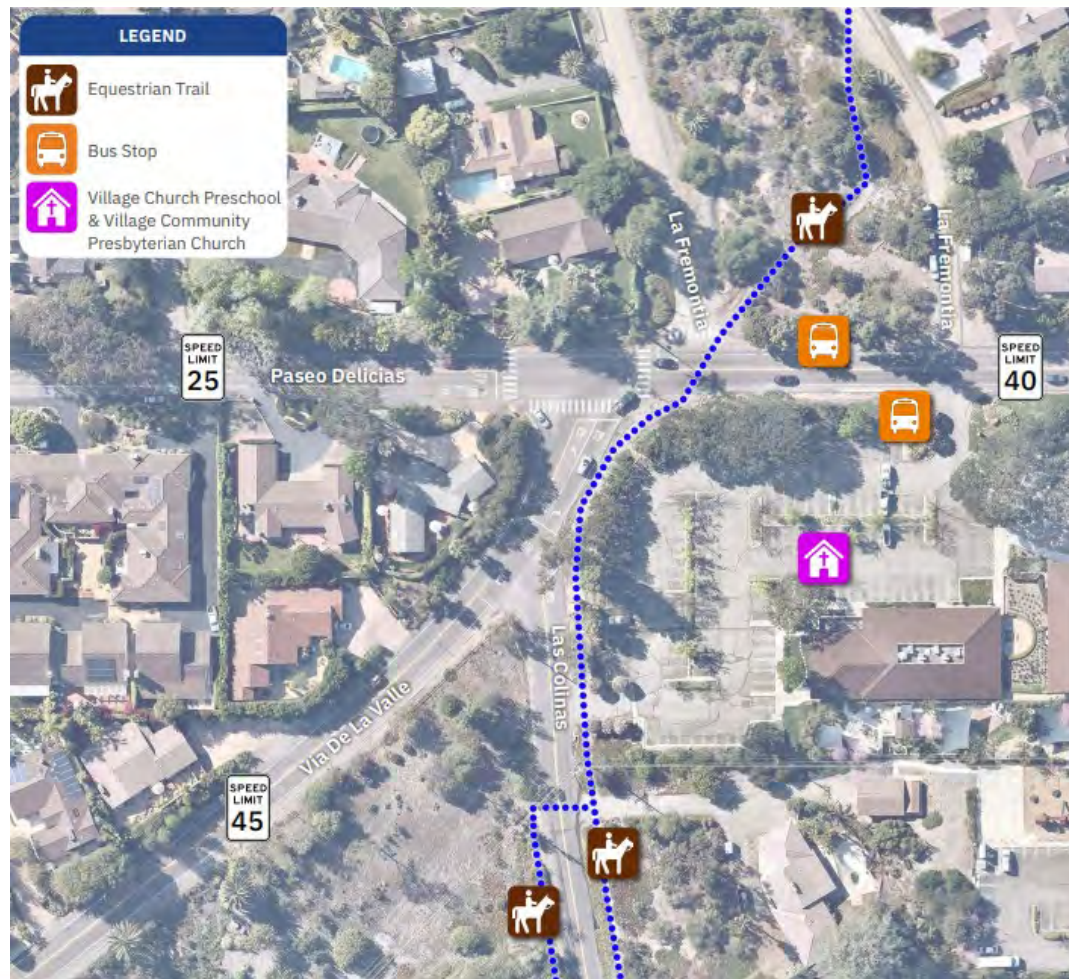
Intersection Review

West Roundabout:

**Paseo Delicias at
Via de la Valle**



Paseo Delicias at Via de la Valle



Existing Condition:

- Las Colinas merge at Via de la Valle
- Skewed/multi-leg intersection
- Low visibility pedestrian/equestrian crossings
- Bus stops use travel lanes

Objectives:

- Improve intersection operations
- Reduce vehicular queue
- Increase visibility of cross traffic
- Provide safe passage for pedestrian, equestrian, bicyclists
- Bus pull-outs & shelters



County of San Diego — Department of Public Works

Rancho Santa Fe Roundabouts Project

Site Plan: Paseo Delicias at Via de la Valle



Safety:

- 45/40mph → 25mph → 17mph
- 105' diameter, rolled curb for emergency vehicles
- Bus pullouts & shelters

Visibility:

- Enhanced pedestrian crosswalk
- Equestrian crossing
- Bicycles use full lane

Landscaping:

- Evaluation to identify & protect mature trees
- Local plant palette
- Decorative boulders
- Historic RSF monument



County of San Diego — Department of Public Works

Rancho Santa Fe Roundabouts Project

Temporary Traffic Measures During Construction



County of San Diego — Department of Public Works

Rancho Santa Fe Roundabouts Project

Schedule & Next Steps: Eastern Roundabout

Complete Design Engineering

“Shovel Ready”

- Utility Engineering Check
- Third-Party Technical Review
- Community Outreach, Review & Comment
- Incorporate Review Revisions
- Move to 100% Design

TransNet Construction Funds

Available: Mid-2027

- Board of Supervisors Approvals
- Secure Right-of-way easements
- Utility Relocations by Other Agencies
- Advertise construction contract for bid

CONSTRUCTION BEGINS

Early 2028

- 6-month Construction Duration



County of San Diego — Department of Public Works

Rancho Santa Fe Roundabouts Project

Schedule & Next Steps: Middle and West Roundabouts

Paseo Delicias at Via de la Valle, and at El Montevideo

**Complete Design
Engineering**
“Shovel Ready”

**Construction
Funding**
TBD

**CONSTRUCTION
BEGINS**
TBD

- Utility Engineering Check
- Third-Party Technical Review
- Community Outreach, Review & Comment
- Incorporate Review Revisions
- Move to 100% Design

Construction schedule contingent on funding source and amount



County of San Diego — Department of Public Works

Rancho Santa Fe Roundabouts Project

Community Input!

- Tonight's Meeting:
 - Speak directly to the Project Team
 - Comment Cards
- Visit Project Website:
https://www.sandiegocounty.gov/content/sdc/dpw/roads/rancho_santa_fe.html
 - URL is https://bit.ly/RSF_roundabouts
 - All Exhibits available for download
 - Comment submittal through form on Project Website
 - Email Cynthia Curtis, Project Manager
Cynthia.Curtis@sdcounty.ca.gov





Thank You!

For more information about this project and the County of San Diego Department of Public Works

Stay in touch!

Social:  [sdcountypw](#)  [sdcountypw](#)

