

Existing Condition and Project Purpose - Via De La Valle Intersection

Existing Condition

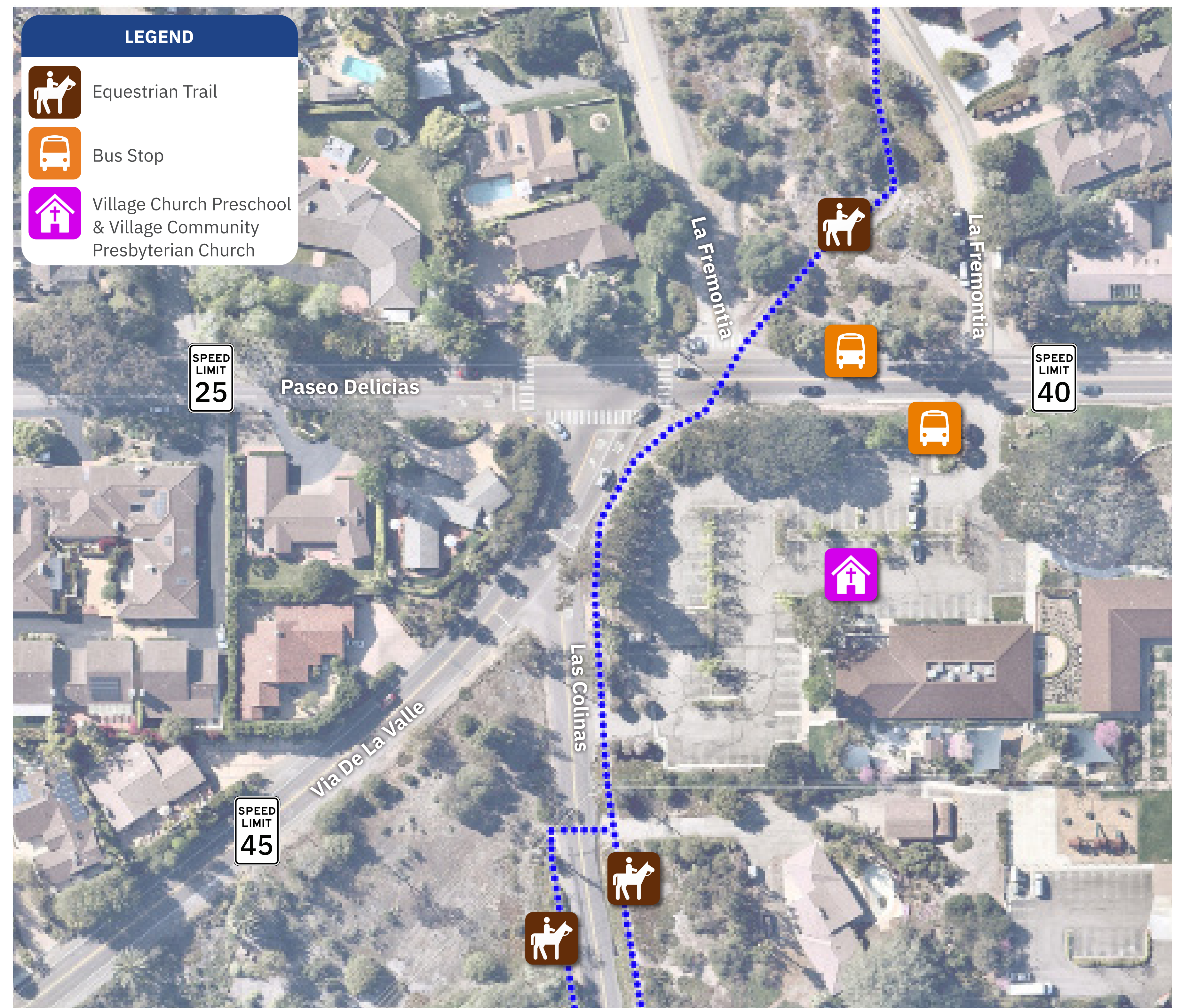
- High volume route between the I-15 and I-5
- Low visibility pedestrian crossings
- No equestrian crossing accommodation
- Skewed/Multi-leg intersection
- Outdated drainage structures
- Bus stops block travel lane

Objective

- Improve intersection operations
- Improve intersection visibility
- Reduce delay and queuing
- Provide safe passage for pedestrian, equestrian, and bicycle traffic
- Update drainage structures
- Bus stop pullouts and shelters



Existing Condition: Aerial Photo of the Intersection of Paseo Delicias and Via De La Valle



County of San Diego - Department of Public Works

Rancho Santa Fe Roundabouts Project

May 7, 2024

Project Update

Visit: sandiegocounty.gov/content/sdc/dpw/roads/rancho_santa_fe.html

Call: 858.694.3900 **Social:** [f sdcountypdw](#) [sdcountypdw](#) **Scan:**



Existing Condition and Project Purpose - El Montevideo Intersection

Existing Condition

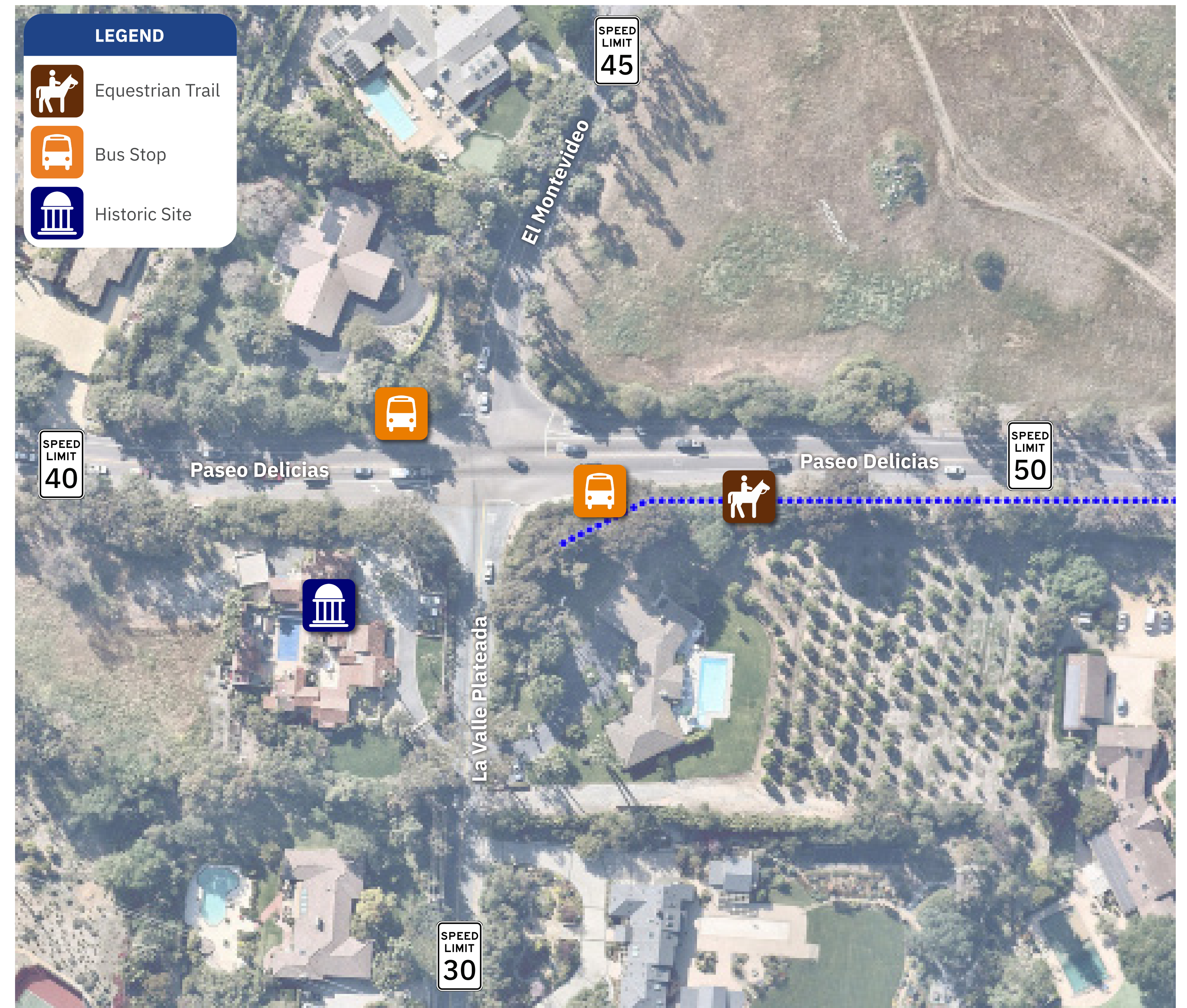
- High volume route between the I-15 and I-5
- High speed approach to stop signs
- 4-way stop-increased delay
- Queuing-particularly during commute hours
- High speeds through intersection
- No pedestrian crossings
- No equestrian accommodations
- Bus stops block travel lane
- Historic property at SW corner

Objective

- Reduce speeds approaching the intersection
- Reduce delay and queuing
- Increase visibility of cross traffic
- Provide safe passage for pedestrian, equestrian, and bicycle traffic
- Bus stop pullouts and shelters
- Minor impact to roadway vegetation at historic property



Existing Condition: Aerial Photo of the Intersection of Paseo Delicias and El Montevideo



County of San Diego - Department of Public Works

Rancho Santa Fe Roundabouts Project

May 7, 2024

Project Update

Visit: sandiegocounty.gov/content/sdc/dpw/roads/rancho_santa_fe.html

Call: 858.694.3900 Social: [f](#)sdcountypw [t](#)sdcountypw Scan:



Existing Condition and Project Purpose - El Camino Del Norte Intersection

Existing Condition

- High volume route between the I-15 and I-5
- High speeds through intersection
- Difficult for cross traffic to turn
- No pedestrian or equestrian crossings
- Outdated drainage structures
- Environmentally Sensitive Areas (ESA'S)

Objective

- Reduce speeds approaching the intersection
- Reduce delay and queuing at El Camino Del Norte
- Increase visibility of cross traffic
- Provide safe passage for pedestrian, equestrian, and bicycle traffic
- Update drainage structures
- Minimized intersection structures to limit impact to ESA's



Existing Condition: Aerial Photo of the Intersection of Paseo Delicias and El Camino Del Norte



County of San Diego - Department of Public Works

Rancho Santa Fe Roundabouts Project

May 7, 2024

Project Update

Visit: sandiegocounty.gov/content/sdc/dpw/roads/rancho_santa_fe.html

Call: 858.694.3900 **Social:** [f](#)sdcountypw [t](#)sdcountypw **Scan:**



Traffic Control - El Camino Del Norte Intersection



Temporary Traffic Control Signal



WELCOME



County of San Diego - Department of Public Works

Rancho Santa Fe Roundabouts Project Update

***Por favor díganos,
si necesita servicios de traducción***

Tonight's Meeting Overview

- 1. Welcome! County Team Introductions** (6:05pm - 5 mins)
- 2. Project Overview PowerPoint Presentation** (6:10pm - 15-20 mins)
 - A. Project Background, Objectives & Status
 - B. Intersection Overview: Approach to Design
 - C. Schedule & Next Steps
 - D. Community Review & Input
- 5. Questions & Answers, Technical Exhibits Review** (6:30 - 7:30pm until event concludes)

For more information scan:



https://bit.ly/RSF_roundabouts

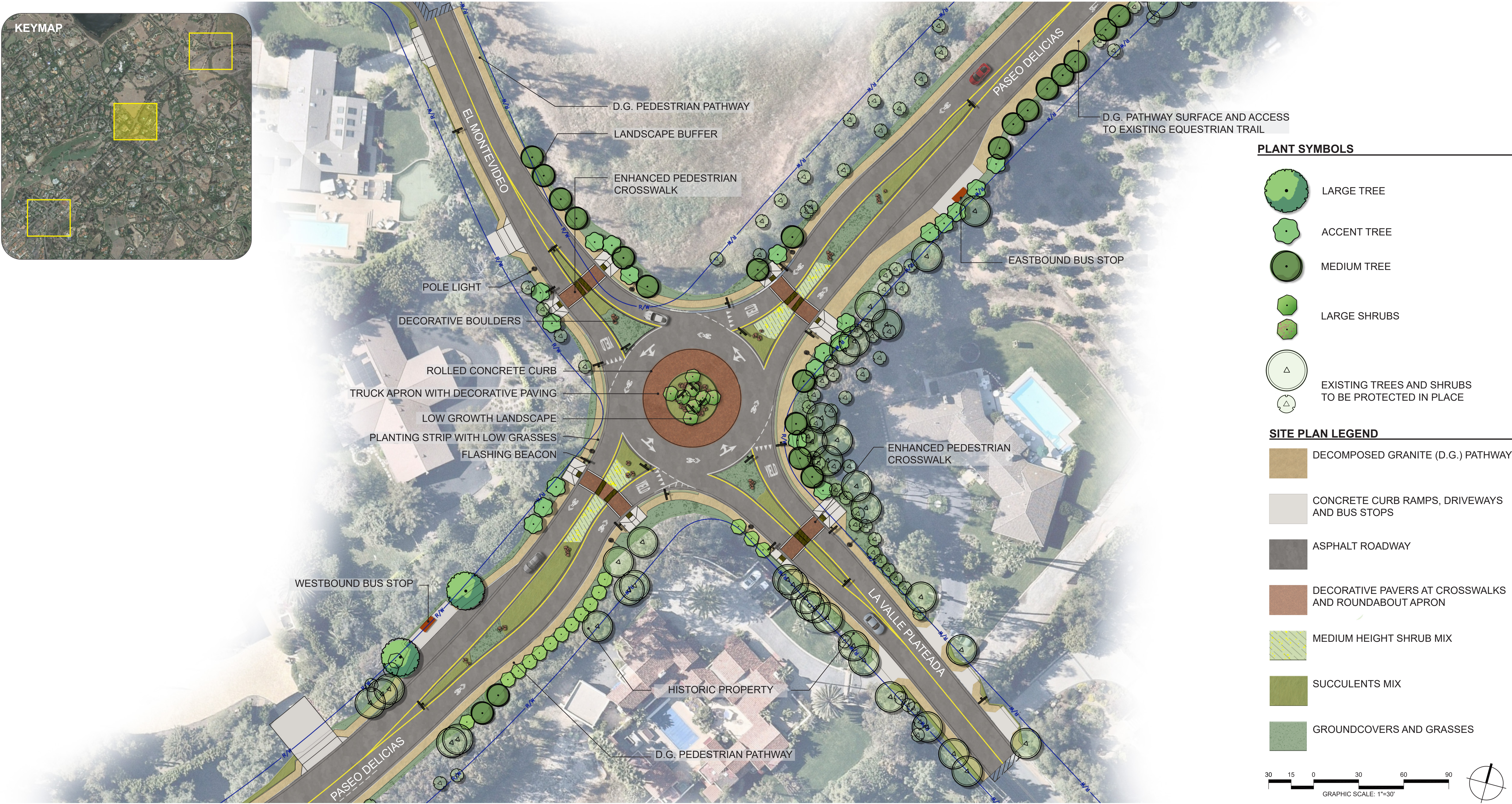
Visit: sandiegocounty.gov/content/sdc/dpw/roads/rancho_santa_fe.html

Call: 858.694.3900 **Social:** [f](#) sdcountypw [t](#) sdcountypw

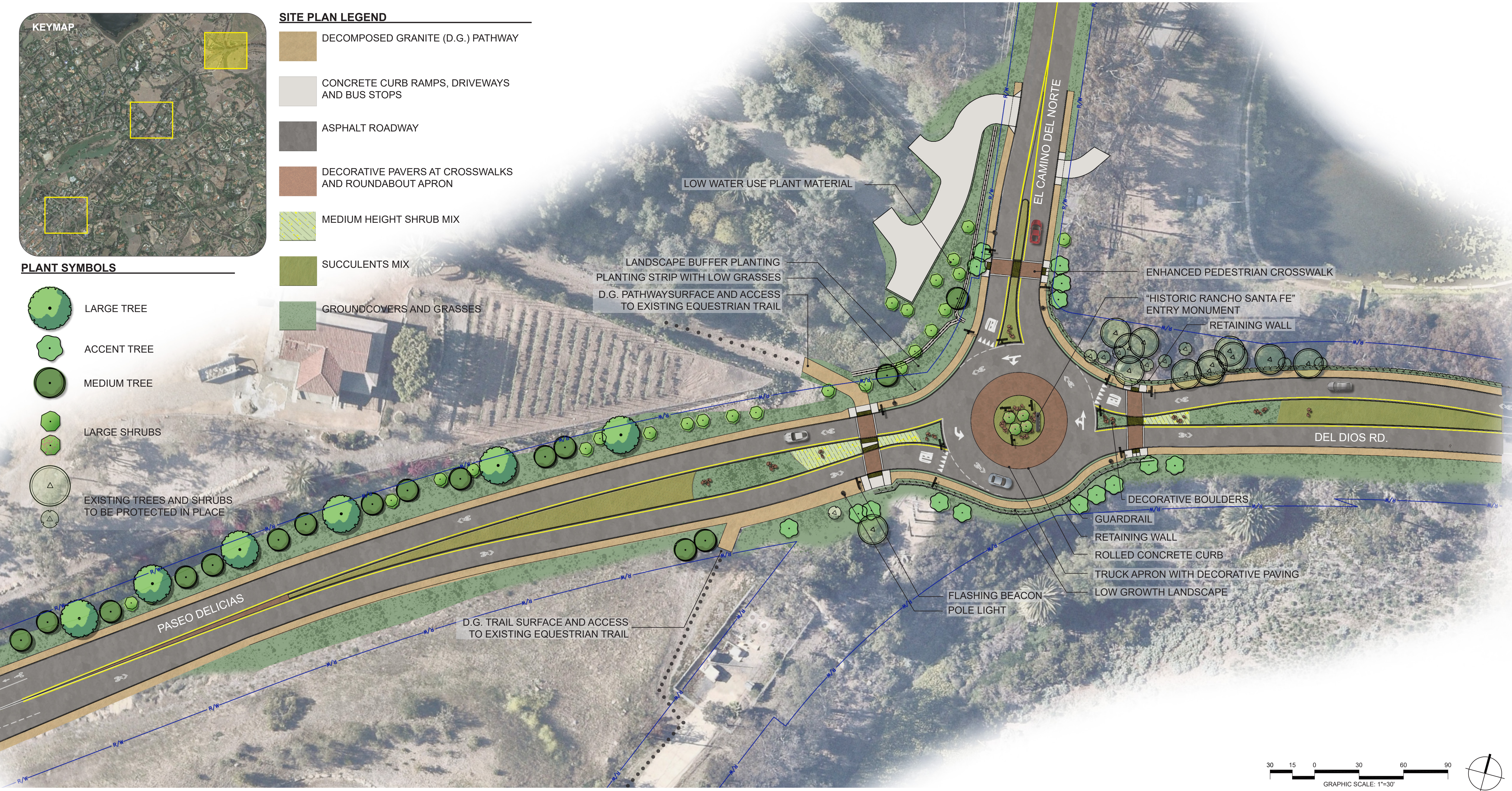
Site Plan - Via De La Valle Intersection



Site Plan - El Montevideo Intersection



Site Plan - El Camino Del Norte Intersection



Visual Simulation - El Camino Del Norte Intersection



County of San Diego - Department of Public Works

Rancho Santa Fe Roundabouts Project

May 7, 2024

Project Update

Visit: sandiegocounty.gov/content/sdc/dpw/roads/rancho_santa_fe.html

Call: 858.694.3900 **Social:** [f sdcountypdw](#) [sdcountypdw](#) **Scan:**



Visual Simulation - El Camino Del Norte Intersection



County of San Diego - Department of Public Works

Rancho Santa Fe Roundabouts Project

May 7, 2024

Project Update

Visit: sandiegocounty.gov/content/sdc/dpw/roads/rancho_santa_fe.html

Call: 858.694.3900 **Social:** [f sdcountypdw](#) [sdcountypdw](#) **Scan:**



Landscape Material Palette, Signage and Lighting



Pinus canariensis
Canary Island Pine

LARGE TREES



Platanus racemosa
California Sycamore



Quercus agrifolia
Coast Live Oak



Populus fremontii
Fremont Cottonwood



Erythrina caffra
Coral Tree



Callistemon citrinus
Crimson Bottlebrush

ACCENT TREES



EXISTING ENTRY MONUMENTS TO BE
RELOCATED TO PROPOSED ROUNDABOUTS



Olea europaea 'Wilsonii'
Wilson's Olive

MEDIUM TREES



Quercus dumosa
Coastal Scrub Oak



Umbellularia californica
California bay



Prunus caroliniana
Carolina Cherry Laurel

LARGE SHRUBS



Rhus integrifolia
Lemonade Berry



Agave attenuata
Foxtail Agave

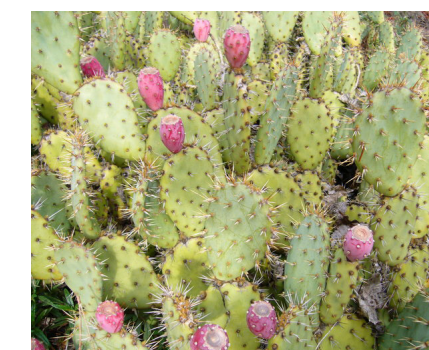
SUCCULENTS



Aloe striata
Coral Aloe



Hesperaloe parviflora
Red Yucca



Opuntia littoralis
Coast Prickly Pear



Artemisia californica
California Sagebrush

MEDIUM SHRUBS



Encelia californica
California Encelia



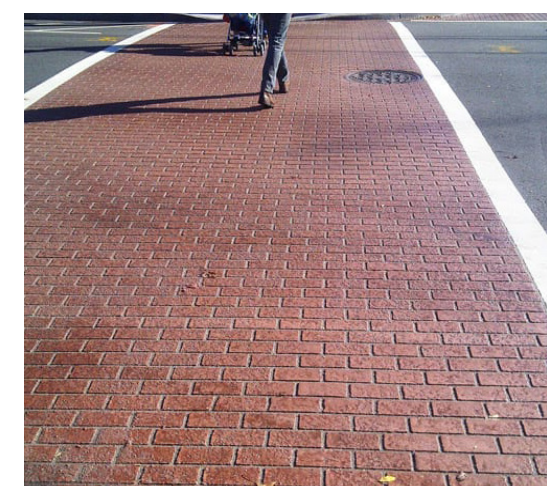
Mimulus spp.
Monkey Flower



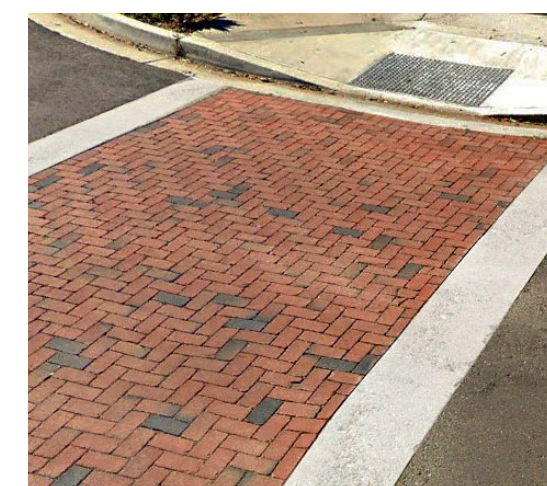
Rosmarinus officinalis
Upright Rosemary



Salvia greggii
Autumn Sage



Stamped Concrete Paving at
Pedestrian Crosswalk with
Painted Reflective Band



Vehicular Rated Pavers at
Pedestrian Crosswalk with
Painted Reflective Band

ENHANCED PAVING OPTIONS



Vehicular Rated Pavers or
Stamped Concrete Vehicular
Roundabout Apron



Arctostaphylos x 'Emerald Carpet'
Emerald Carpet Manzanita

GROUNDCOVERS / GRASSES



Festuca californica
California Fescue



Muhlenbergia rigens
Deergass



Achillea millefolium
Common Yarrow

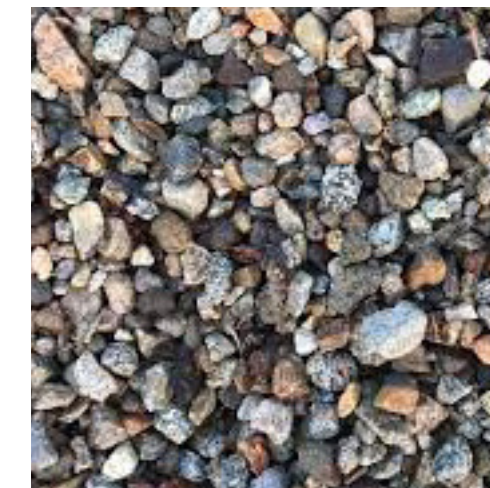


Cedar Split Rail Fencing
3'-6" Dual Lodge Pole

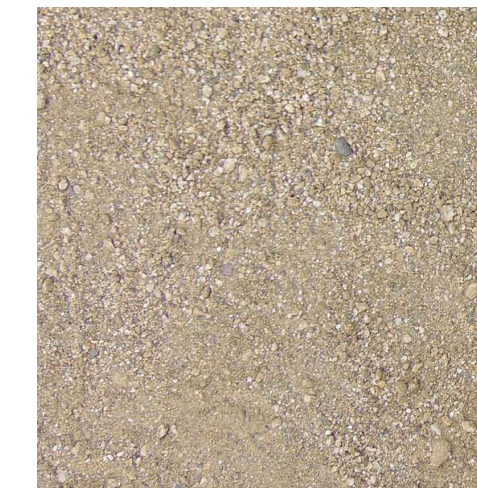
HARDSCAPE ELEMENTS



Boulders 2'-3' wide



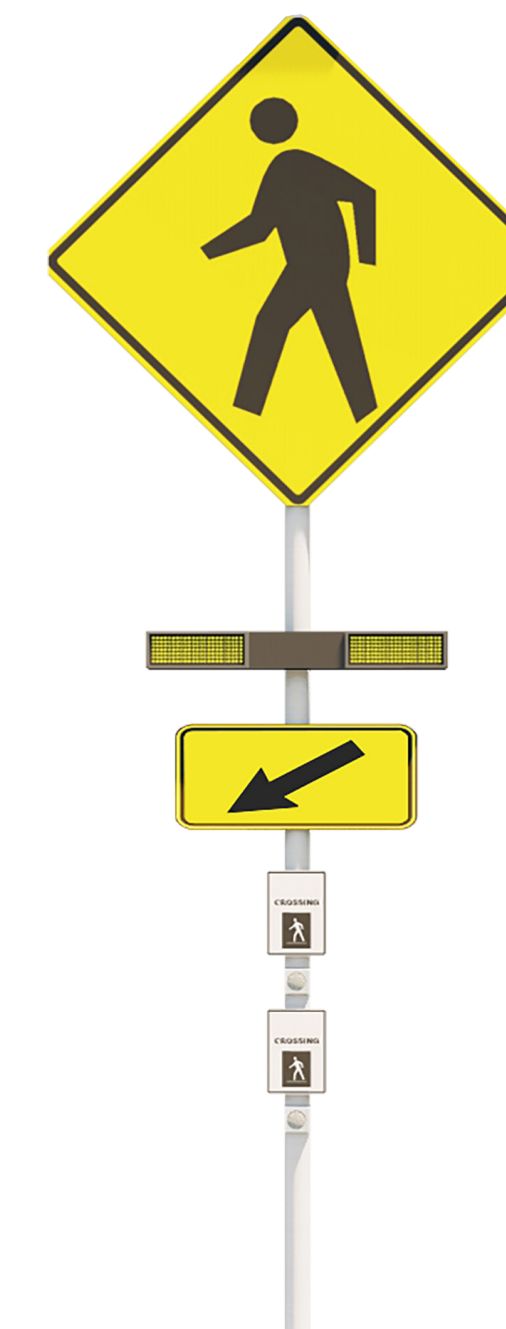
3/4" Crushed Aggregate



Stabilized Decomposed
Granite for Trail Surface



GUARDRAIL OPTIONS AT PROPOSED ROUNDABOUTS



FLASHING CROSSWALK BEACON
WITH EQUESTRIAN PUSH BUTTON



POLE LIGHTING

Reference document:
Final Environmental Impact Report and Supporting Documentation,
Rancho Santa Fe Roundabouts Project, September 2016



County of San Diego - Department of Public Works

Rancho Santa Fe Roundabouts Project

May 7, 2024

Project Update

Visit: sandiegocounty.gov/content/sdc/dpw/roads/rancho_santa_fe.html

Call: 858.694.3900 Social: [f sdcountypdw](https://www.facebook.com/sdcountypdw) [sdcountypdw](https://twitter.com/sdcountypdw) Scan:

