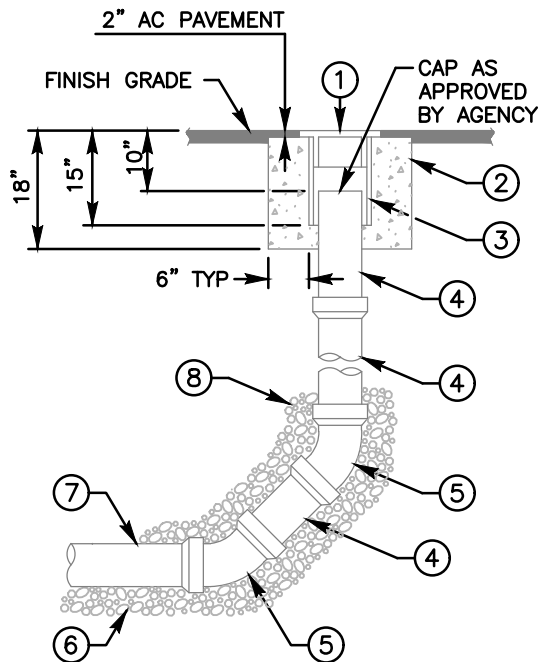
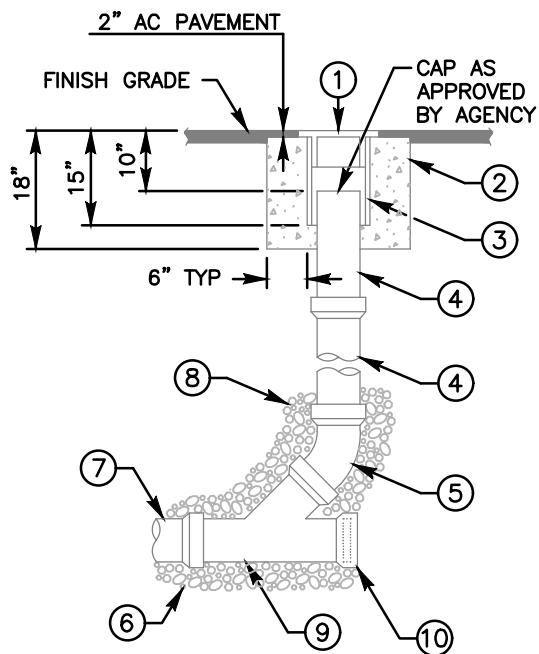


## SEWERAGE SYSTEMS



TYPE A  
MAINS FOR 6" AND 8"




TYPE B  
SEWER LATERAL  
CLEANOUT

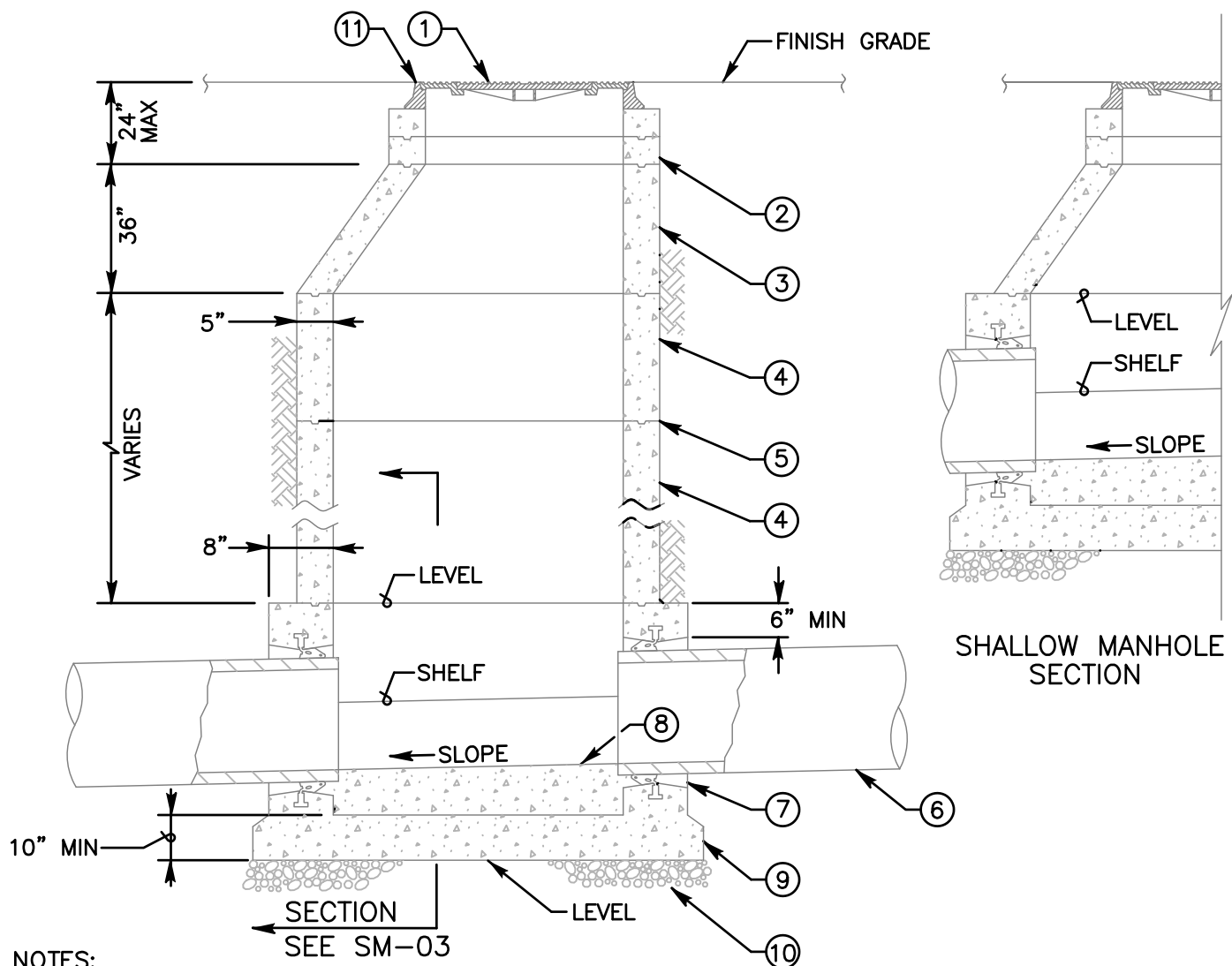
NOTES:

- 1) REFER TO AGENCY SPECIFICATIONS WHERE APPLICABLE
- 2) CLEANOUTS TO BE INSTALLED AT THE END OF MAINS WHERE INDICATED ON THE PLANS
- 3) CLEANOUT PIPE TO BE SAME SIZE AND MATERIAL AS SEWER MAIN UP TO 8"
- 4) BACKFILL TO TOP OF 45° BEND WITH 3/4" CRUSHED ROCK
- 5) MATERIALS SHALL BE SELECTED FROM THE AGENCY'S APPROVED MATERIALS LIST

— — — — —  
LEGEND ON PLANS

ITEM NO	SIZE AND DESCRIPTION	ITEM NO	SIZE AND DESCRIPTION
①	12" CI CLEANOUT BOX COVER MARKED 'SEWER' AND AGENCY NAME AS REQUIRED	⑤	45° ELBOW
②	CONCRETE RING	⑥	3/4" CRUSHED ROCK PIPE BEDDING
③	12" PVC, C-900 x 15" LONG (CLEANOUT BOX)	⑦	SEWER MAIN
④	SIZE x REQUIRED LENGTH PVC PIPE	⑧	3/4" CRUSHED ROCK SEE NOTE 4
		⑨	STANDARD WYE BRANCH
		⑩	INSTALL PLUG AND CONCRETE LUG

Revision	By	Approved	Date	SAN DIEGO REGIONAL STANDARD DRAWING	RECOMMENDED BY THE SAN DIEGO REGIONAL STANDARDS COMMITTEE
ORIGINAL		Kercheval	12/75		
Reviewed	BK	B. KNOLL	04/15		
Reviewed	BK	B. KNOLL	10/18		
Reviewed	RP	S. Engeda	03/22		
SEWER CLEANOUT					 03/24/2022
					Chairperson R.C.E. 52241    Date
					DRAWING NUMBER <b>SC-01</b>




NOTES:

- 1) REFER TO AGENCY SPECIFICATIONS WHERE APPLICABLE
- 2) VERTICAL WALL OF CONE TO BE ON THE UPSTREAM SIDE OF MANHOLE SEE SM-05 FOR ACCESS LOCATIONS
- 3) FOR MANHOLE BASES SEE SM-03
- 4) MANHOLES FOR MAINS 18" AND LARGER SHALL BE COATED AND LINED PER SM-07
- 5) MATERIALS SHALL BE SELECTED FROM THE AGENCY'S APPROVED MATERIALS LIST

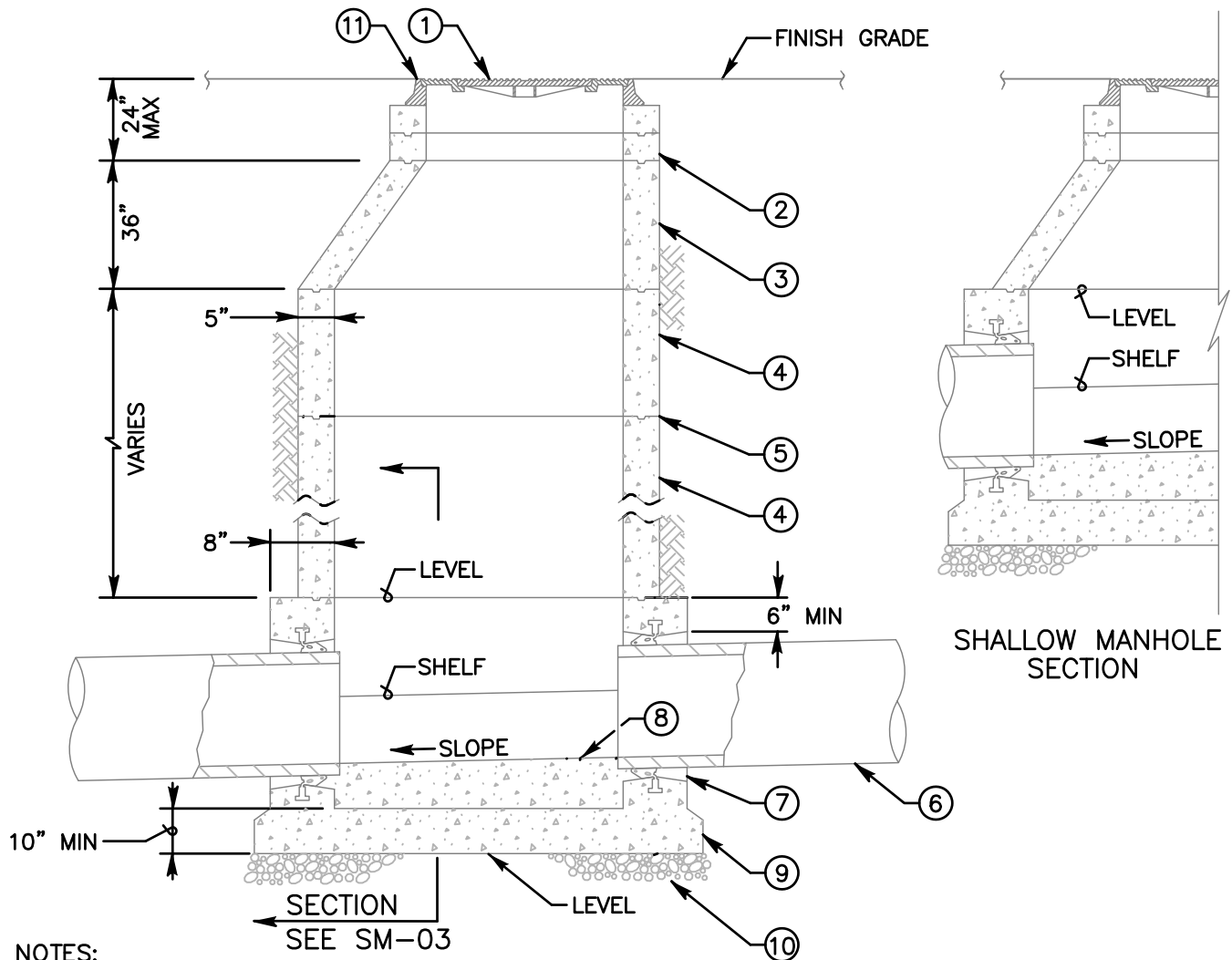
48"  
—○—  
LEGEND ON PLANS

ITEM NO	SIZE AND DESCRIPTION	ITEM NO	SIZE AND DESCRIPTION
①	36" MANHOLE FRAME AND TWO CONCENTRIC COVERS SEE S.D.R.S.D. M-3	⑦	MANHOLE PIPE CONNECTOR SEE SM-04
②	36" DIA GRADE RING(S) 6" TO 18" HIGH	⑧	FIELD INSTALLED INVERT SEE SM-04
③	ECCENTRIC CONE SEE NOTE 2	⑨	CONCRETE BASE, PRECAST OR CAST IN PLACE
④	48" DIA RING(S) VARIABLE HEIGHT	⑩	6" OF 3/4" CRUSHED ROCK
⑤	WATER TIGHT JOINTS SEE SM-05	⑪	MANHOLE DETAIL SEE SM-05
⑥	SEWER MAIN		

Revision	By	Approved	Date	SAN DIEGO REGIONAL STANDARD DRAWING	RECOMMENDED BY THE SAN DIEGO REGIONAL STANDARDS COMMITTEE
ORIGINAL		Kercheval	12/75		
Reviewed	BK	B. KNOLL	04/15	<b>48" DIAMETER PRECAST MANHOLE INSTALLATION</b>	 Chairperson R.C.E. 52241 Date 03/24/2022
Reviewed	BK	B. KNOLL	10/18		
Reviewed	RP	S. Engeda	03/22		

DRAWING NUMBER	<b>SM-01</b>
----------------	--------------



NOTES:


- 1) REFER TO AGENCY SPECIFICATIONS WHERE APPLICABLE
- 2) VERTICAL WALL OF CONE TO BE ON THE UPSTREAM SIDE OF MANHOLE SEE SM-05 FOR ACCESS LOCATIONS
- 3) FOR MANHOLE BASES SEE SM-03
- 4) MANHOLES FOR MAINS 18" AND LARGER SHALL BE COATED AND LINED PER SM-07
- 5) MATERIALS SHALL BE SELECTED FROM THE AGENCY'S APPROVED MATERIALS LIST

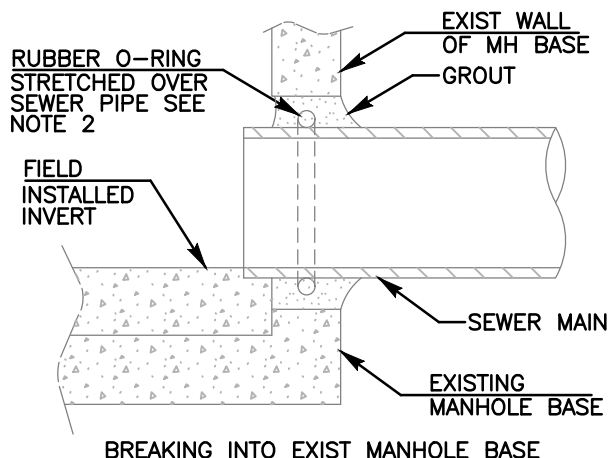
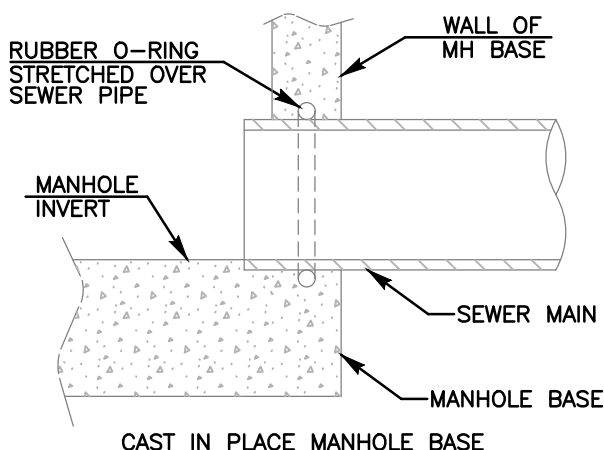
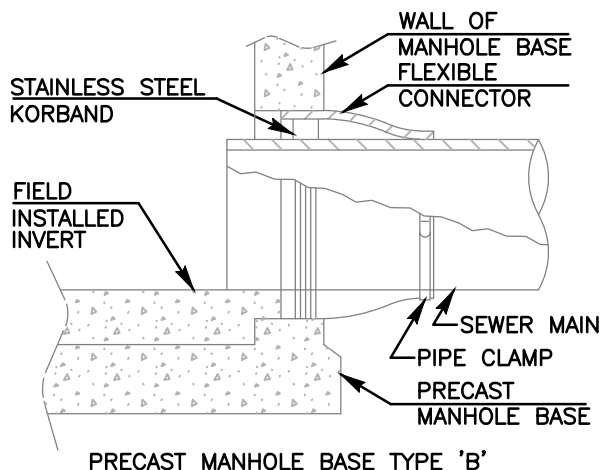
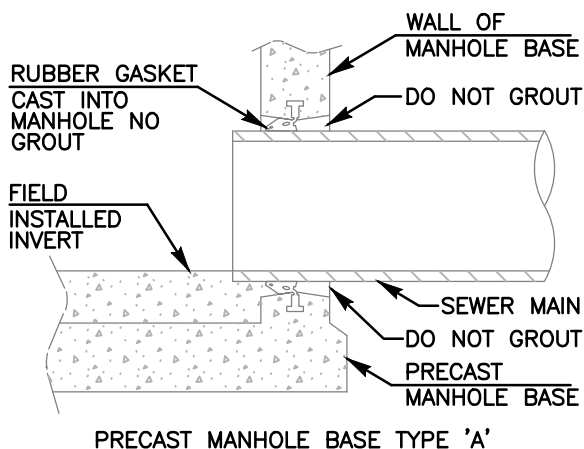
60"  
LEGEND ON PLANS

ITEM NO	SIZE AND DESCRIPTION	ITEM NO	SIZE AND DESCRIPTION
①	36" MANHOLE FRAME AND TWO CONCENTRIC COVERS SEE S.D.R.S.D. M-3	⑦	MANHOLE PIPE CONNECTOR SEE SM-04
②	36" DIA GRADE RING(S) 6" TO 18" HIGH	⑧	FIELD INSTALLED INVERT SEE SM-04
③	ECCENTRIC CONE SEE NOTE 2	⑨	CONCRETE BASE, PRECAST OR CAST IN PLACE
④	60" DIA RING(S) VARIABLE HEIGHT	⑩	6" OF 3/4" CRUSHED ROCK
⑤	WATER TIGHT JOINTS SEE SM-05	⑪	MANHOLE DETAIL SEE SM-05
⑥	SEWER MAIN		

Revision	By	Approved	Date	<p>SAN DIEGO REGIONAL STANDARD DRAWING</p> <p><b>60" DIAMETER PRECAST MANHOLE INSTALLATION</b></p>	<p>RECOMMENDED BY THE SAN DIEGO REGIONAL STANDARDS COMMITTEE</p> <p><i>Samson Engeda</i> 03/24/2022 Chairperson R.C.E. 52241 Date</p> <p>DRAWING NUMBER <b>SM-02</b></p>
ORIGINAL		Kercheval	12/75		
Reviewed	BK	B. KNOLL	04/15		
Reviewed	BK	B. KNOLL	10/18		
Reviewed	RP	S. Engeda	03/22		

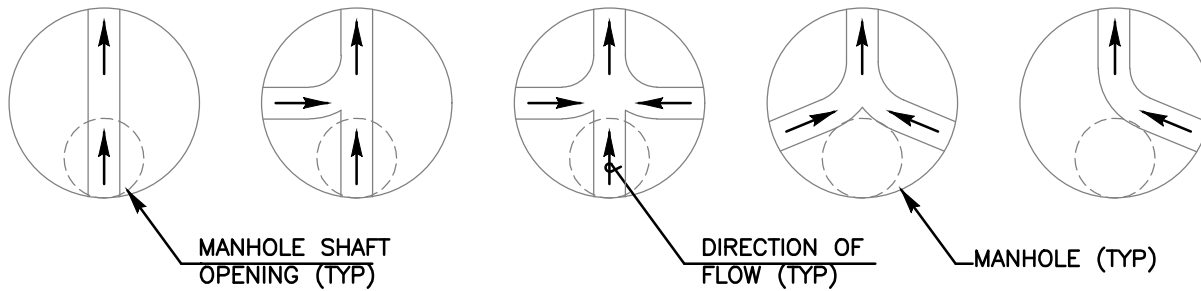
Revision	By	Approved	Date	SAN DIEGO REGIONAL STANDARD DRAWING	RECOMMENDED BY THE SAN DIEGO REGIONAL STANDARDS COMMITTEE
ORIGINAL		Kercheval	12/75		
Reviewed	BK	B. KNOLL	04/15	SEWER MANHOLE BASE	 03/24/2022
Reviewed	BK	B. KNOLL	10/18		Chairperson R.C.E. 52241 Date
Reviewed	RP	S. Engeda	03/22		DRAWING NUMBER
					SM-03



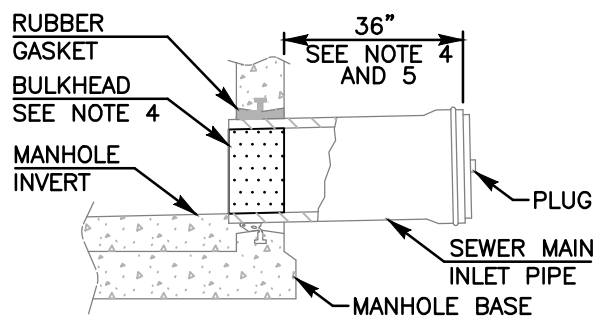
#### NOTES:

- 1) REFER TO AGENCY SPECIFICATIONS WHERE APPLICABLE
- 2) A RUBBER O-RING OR A FLEXIBLE CONNECTOR (AS SHOWN IN PRECAST MANHOLE BASE TYPE 'B') CAN BE USED WHEN BREAKING INTO EXISTING MANHOLE
- 3) FOR MANHOLES REQUIRING COATING AND LINING SEE SM-07
- 4) MATERIALS SHALL BE SELECTED FROM THE AGENCY'S APPROVED MATERIALS LIST

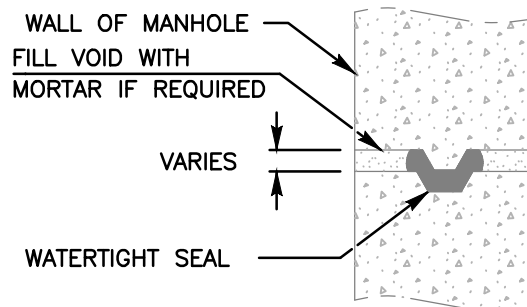
Revision	By	Approved	Date	SAN DIEGO REGIONAL STANDARD DRAWING		RECOMMENDED BY THE SAN DIEGO REGIONAL STANDARDS COMMITTEE
ORIGINAL		Kercheval	12/75	<b>MANHOLE PIPE CONNECTORS</b>		
Reviewed	BK	B. KNOLL	04/15			<i>Saman Engeda</i> 03/24/2022
Reviewed	BK	B. KNOLL	10/18			Chairperson R.C.E. 52241 Date
Reviewed	RP	S. Engeda	03/22			DRAWING NUMBER <b>SM-04</b>



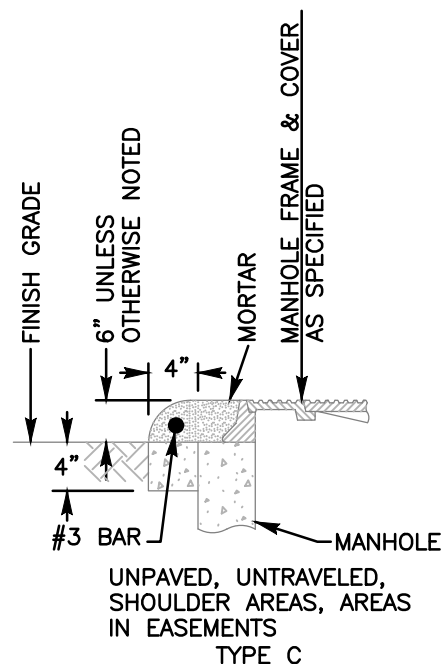
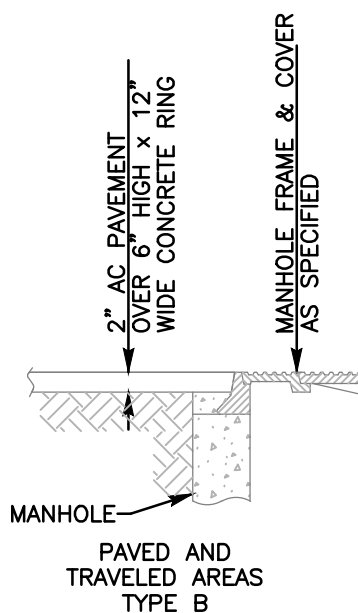
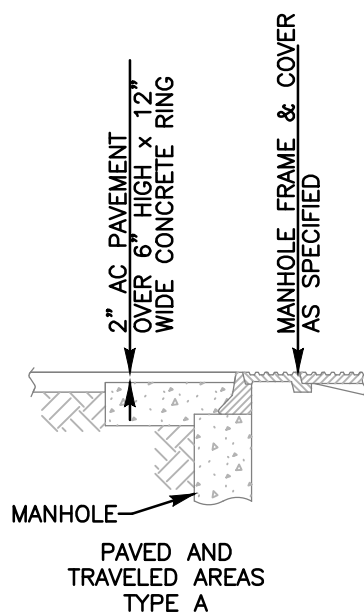
MANHOLE ACCESS LOCATION PLAN VIEW



MANHOLE STUB OUT FOR FUTURE CONNECTION



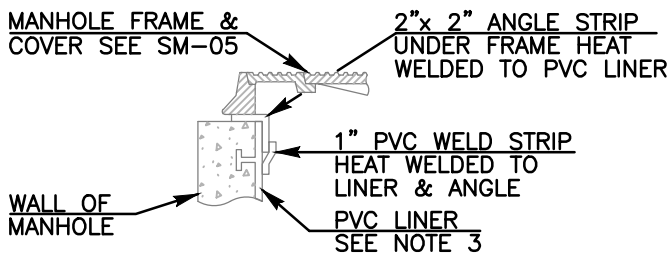
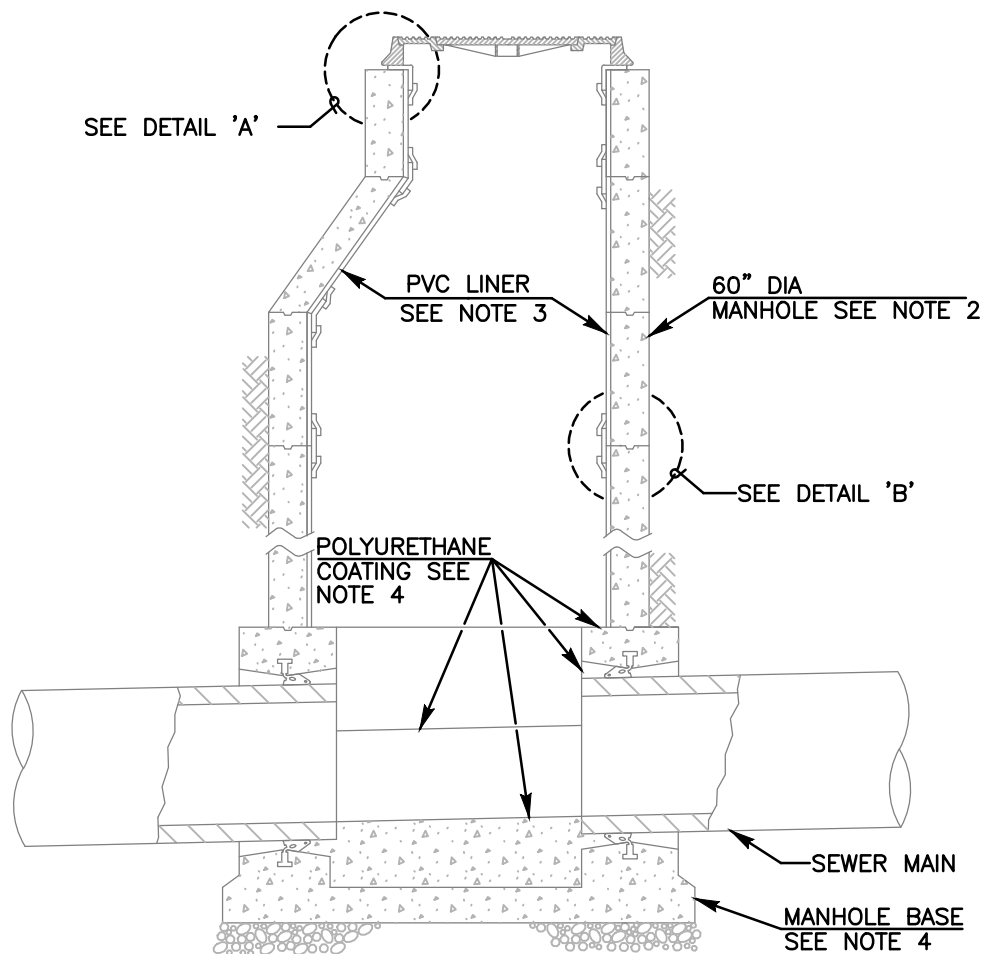
WATERTIGHT MANHOLE JOINT



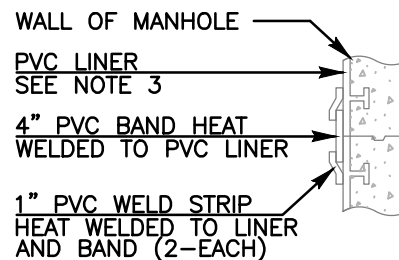
NOTES:

- 1) REFER TO AGENCY SPECIFICATIONS WHERE APPLICABLE
- 2) VERTICAL WALL OF CONE TO BE ON THE UP STREAM SIDE OF MANHOLE
- 3) FOR MANHOLES REQUIRING COATING AND LINING SEE SM-07
- 4) STUBS SHALL BE BULKHEADED AT THE MANHOLE END
- 5) SEWER MAIN TO BE LAID WITH BELLS UP-GRADE
- 6) MATERIALS SHALL BE SELECTED FROM THE AGENCY'S APPROVED MATERIALS LIST

Revision	By	Approved	Date	SAN DIEGO REGIONAL STANDARD DRAWING	RECOMMENDED BY THE SAN DIEGO REGIONAL STANDARDS COMMITTEE
ORIGINAL		Kercheval	12/75		
Reviewed	BK	B. KNOLL	04/15	<b>MANHOLE MISCELLANEOUS DETAILS</b>	 03/24/2022 Chairperson R.C.E. 52241 Date
Reviewed	BK	B. KNOLL	10/18		
Reviewed	RP	S. Engeda	03/22		
					DRAWING NUMBER <b>SM-05</b>



DETAIL "A" MANHOLE  
FRAME & COVER



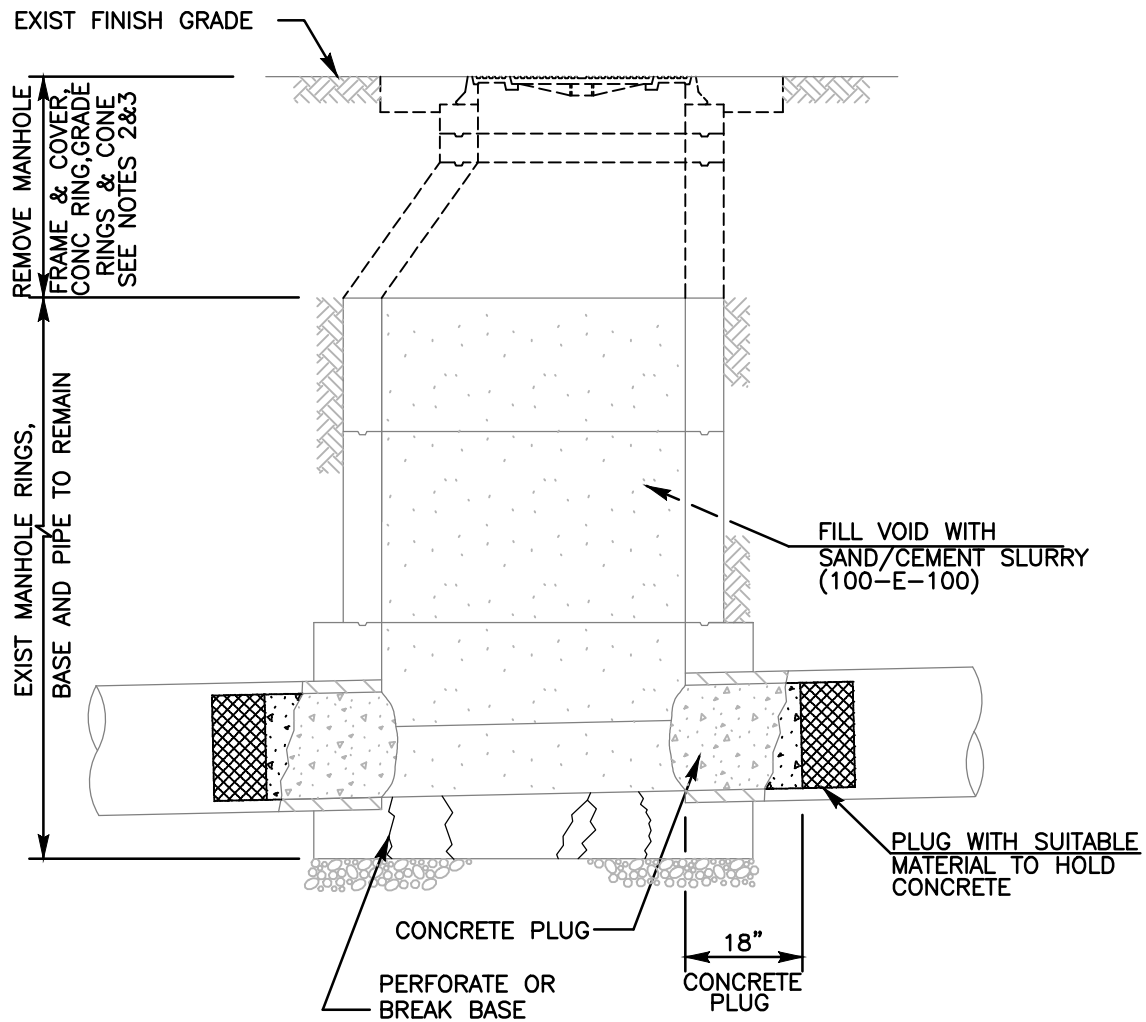
DETAIL "B" MANHOLE  
JOINT SECTIONS

**NOTES:**

- 1) REFER TO AGENCY SPECIFICATIONS WHERE APPLICABLE
- 2) MANHOLES FOR SEWER MAINS 18" AND LARGER SHALL BE COATED AND LINED
- 3) MANHOLE SHAFT AND CONE SECTIONS, AND GRADE RINGS SHALL HAVE A PVC LINER PLACED WITH T-SHAPED SUPPORTS INTEGRALLY CAST INTO THE CONCRETE (OR AGENCY APPROVED EQUAL TO PVC LINER)
- 4) ELASTOMERIC POLYURETHANE COATING SHALL BE APPLIED TO THE INTERIOR OF MANHOLE BASES
- 5) MATERIALS SHALL BE SELECTED FROM THE AGENCY'S APPROVED MATERIALS LIST

Revision	By	Approved	Date	SAN DIEGO REGIONAL STANDARD DRAWING	RECOMMENDED BY THE SAN DIEGO REGIONAL STANDARDS COMMITTEE
ORIGINAL		Kercheval	12/75		
Note 3	BK	B. KNOLL	04/15	<b>MANHOLE COATING AND LINING SYSTEM</b>	<i>Saman Engeda</i> 03/24/2022
Reviewed	BK	B. KNOLL	10/18		Chairperson R.C.E. 52241 Date
Reviewed	RP	S. Engeda	03/22		
					<b>DRAWING NUMBER SM-07</b>



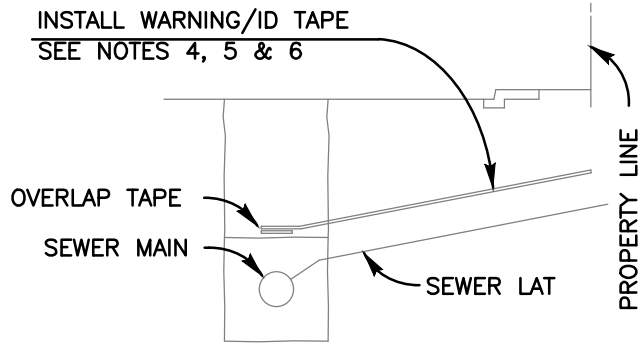


**NOTES:**

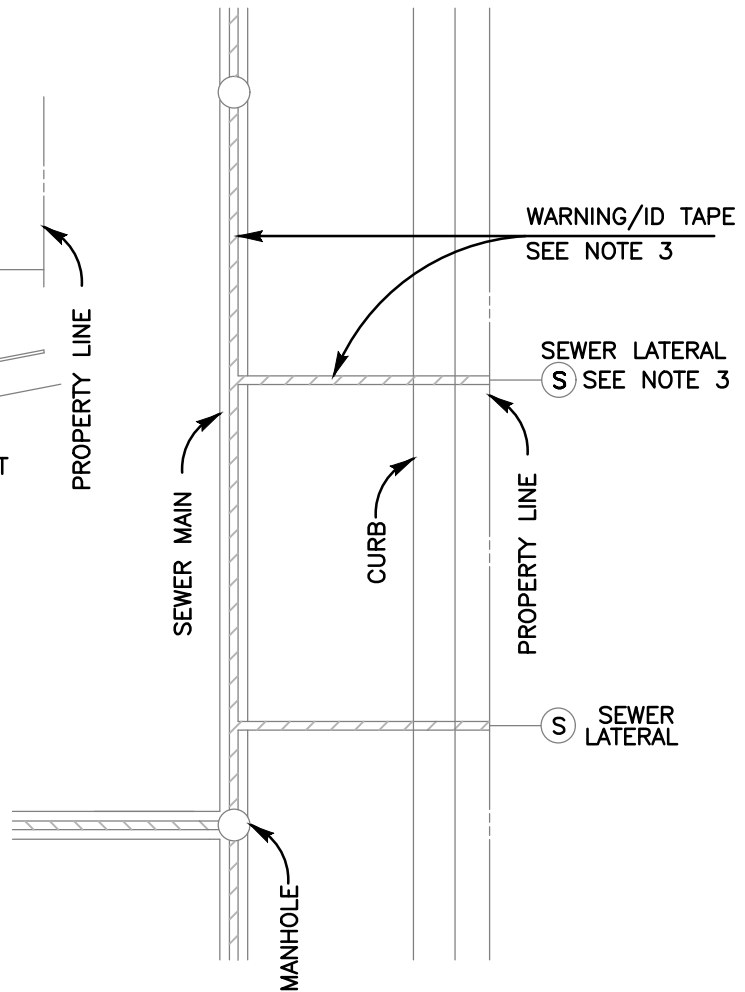
- 1) REFER TO AGENCY SPECIFICATIONS WHERE APPLICABLE
- 2) ALL SALVAGED MATERIAL BECOMES PROPERTY OF AGENCY OF JURISDICTION
- 3) BACKFILL PER AGENCY'S REQUIREMENT
- 4) FOR CUTTING & PLUGGING ABANDONED SEWER MAINS SEE WP-03

LEGEND ON PLANS

Revision	By	Approved	Date	SAN DIEGO REGIONAL STANDARD DRAWING	RECOMMENDED BY THE SAN DIEGO REGIONAL STANDARDS COMMITTEE
ORIGINAL		Kercheval	12/75		
Add Call-out	BK	B. KNOLL	04/15	<b>EXISTING MANHOLE ABANDONMENT</b>	 03/24/2022 Chairperson R.C.E. 52241 Date
Reviewed	BK	B. KNOLL	10/18		
Reviewed	RP	S. Engeda	03/22		
					DRAWING NUMBER <b>SM-08</b>



SECTION AT SEWER LATERALS

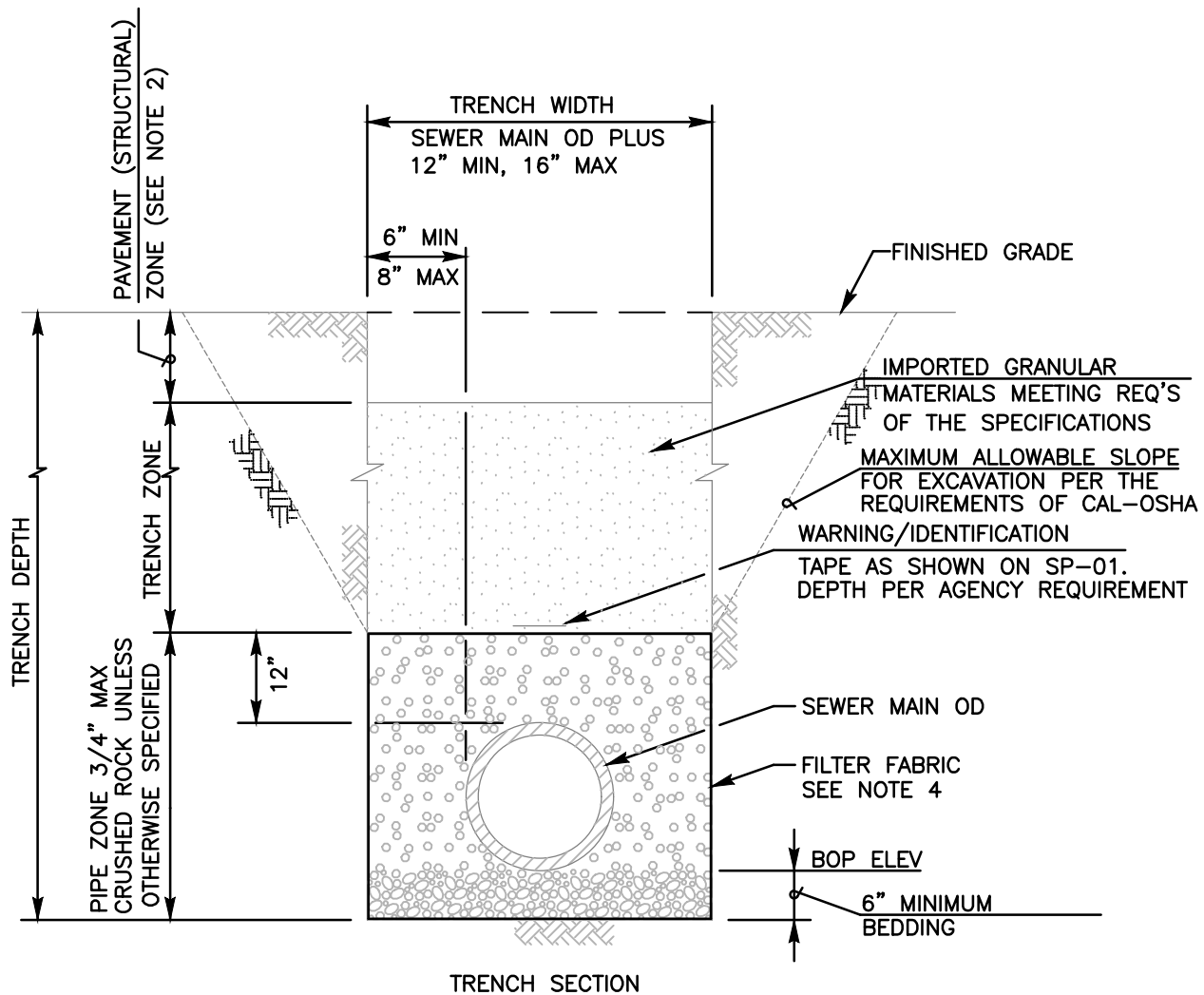


PLAN

NOTES:

- 1) REFER TO AGENCY SPECIFICATIONS WHERE APPLICABLE
- 2) WARNING/IDENTIFICATION TAPE SHALL BE INSTALLED AS SPECIFIED BY AGENCY
- 3) STAMP OR CHISEL A 2" HIGH 'S' IN CURB FACE TO IDENTIFY SEWER LATERAL LOCATION
- 4) FOR SEWER LATERALS EXTEND TAPE TO PROPERTY LINE
- 5) DEPTH OF WARNING/IDENTIFICATION TAPE AS SPECIFIED BY AGENCY
- 6) MATERIALS SHALL BE SELECTED FROM THE AGENCY'S APPROVED MATERIALS LIST

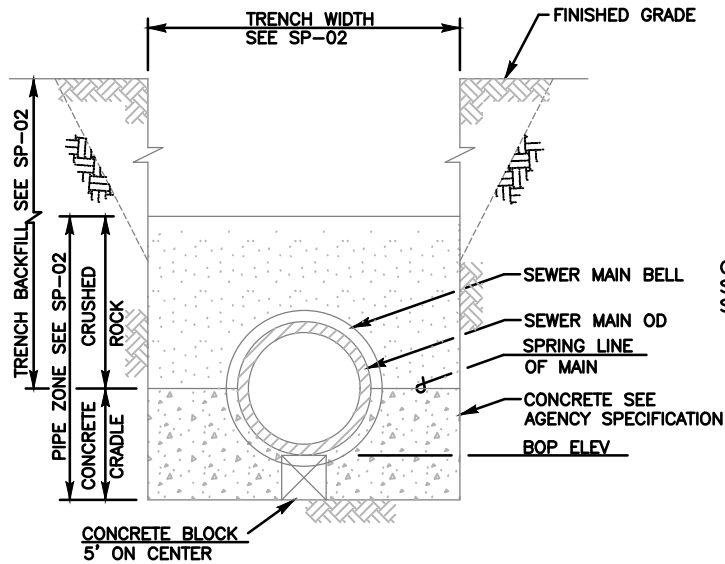
Revision	By	Approved	Date	SAN DIEGO REGIONAL STANDARD DRAWING		RECOMMENDED BY THE SAN DIEGO REGIONAL STANDARDS COMMITTEE
ORIGINAL		Kercheval	12/75	<b>WARNING/IDENTIFICATION TAPE INSTALLATION</b>		
Reviewed	BK	B. KNOLL	04/15			
Reviewed	BK	B. KNOLL	10/18			
Reviewed	RP	S. Engeda	03/22			
						<i>Samantha Engeda</i> 03/24/2022 Chairperson R.C.E. 52241 Date
						DRAWING NUMBER <b>SP-01</b>



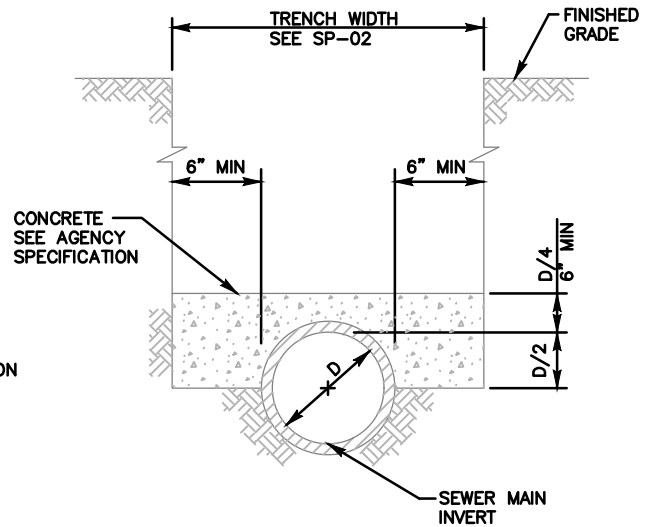
**NOTES:**

- 1) REFER TO AGENCY SPECIFICATIONS FOR TRENCHING, BACKFILLING AND COMPACTING WHERE APPLICABLE
- 2) PAVING OR PAVEMENT REPAIR TO BE DONE IN ACCORDANCE WITH AGENCY OF JURISDICTION
- 3) EXCAVATE BELL HOLES AT EACH JOINT TO PERMIT PROPER ASSEMBLY AND INSPECTION OF THE ENTIRE JOINT
- 4) FILTER FABRIC AS REQUIRED BY AGENCY OF JURISDICTION (WITH A MINIMUM 12" OVERLAP).

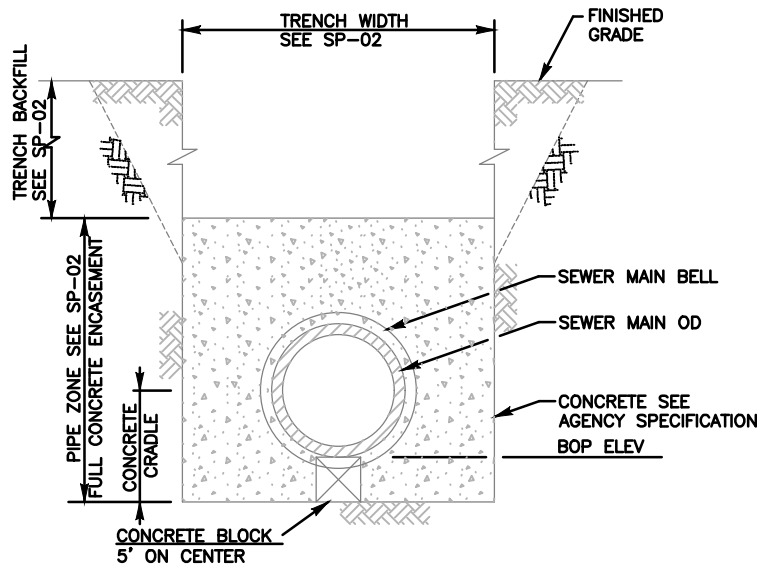
Revision	By	Approved	Date	SAN DIEGO REGIONAL STANDARD DRAWING	RECOMMENDED BY THE SAN DIEGO REGIONAL STANDARDS COMMITTEE
ORIGINAL		Kercheval	12/75		
Reviewed	BK	B. KNOLL	04/15	<b>PIPE BEDDING AND TRENCH BACKFILL FOR SEWER FACILITIES</b>	 03/24/2022 Chairperson R.C.E. 52241 Date
Reviewed	BK	B. KNOLL	10/18		
Reviewed	RP	S. Engeda	03/22		
					DRAWING NUMBER <b>SP-02</b>



TRENCH SECTION  
CONCRETE PIPE CRADLE



TRENCH SECTION  
CONCRETE PROTECTION



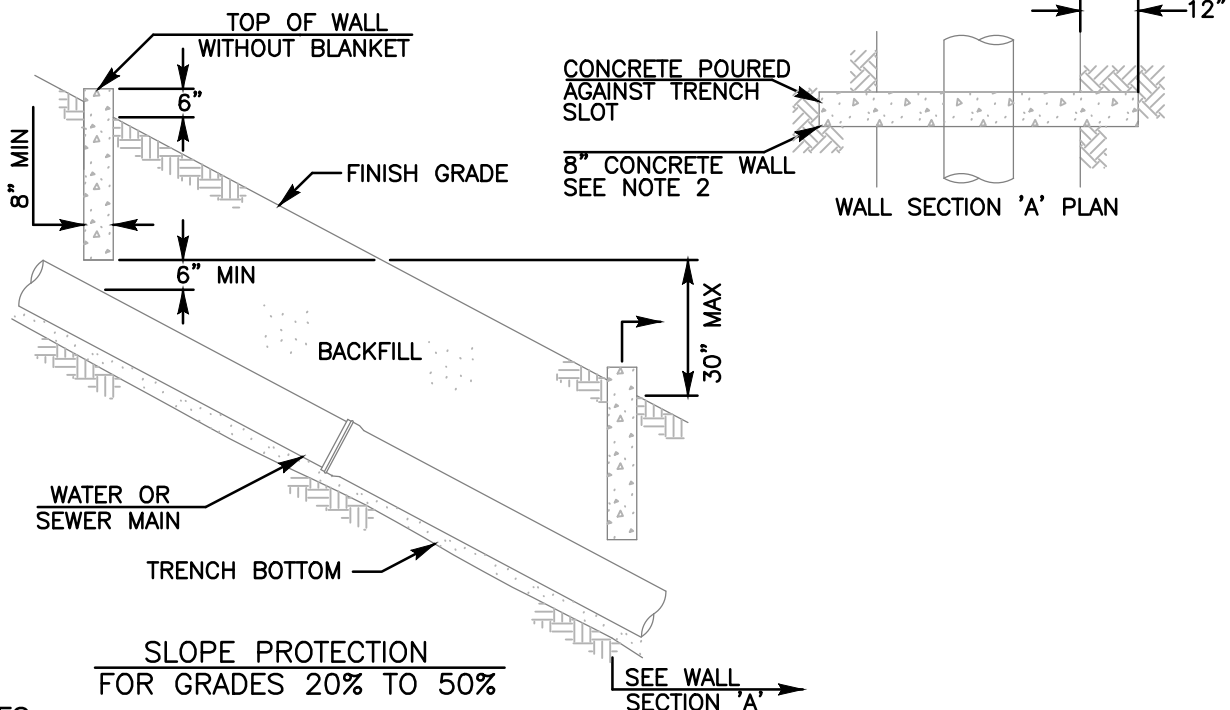
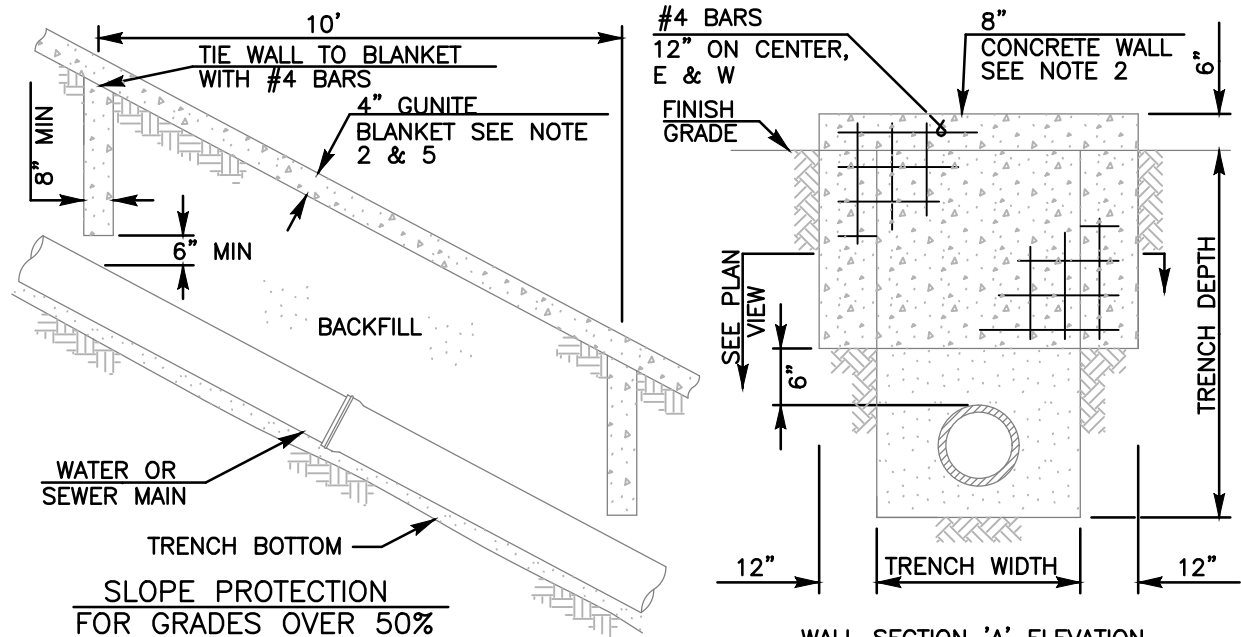
TRENCH SECTION  
CONCRETE PIPE ENCASEMENT

NOTES:

- 1) REFER TO AGENCY SPECIFICATIONS FOR TRENCHING, BACKFILLING AND COMPACTING WHERE APPLICABLE
- 2) CONCRETE CRADLE SHALL BE USED WHEN THE TRENCH WIDTH AT THE UPPER LIMIT OF THE PIPE ZONE EXCEEDS THE MAX WIDTH SPECIFIED ON SP-02 AND OR DIRECTED BY AGENCY'S ENGINEER
- 3) FOR PIPE BEDDING AND TRENCH BACKFILL SEE SP-02

LEGEND ON PLANS

Revision	By	Approved	Date	SAN DIEGO REGIONAL STANDARD DRAWING	RECOMMENDED BY THE SAN DIEGO REGIONAL STANDARDS COMMITTEE
ORIGINAL		Kercheval	12/75		
Reviewed	BK	B. KNOLL	04/15	CONCRETE PROTECTION FOR SEWER PIPE	 03/24/2022 Chairperson R.C.E. 52241 Date
Reviewed	BK	B. KNOLL	10/18		
Reviewed	RP	S. Engeda	03/22		
					DRAWING NUMBER <b>SP-03</b>



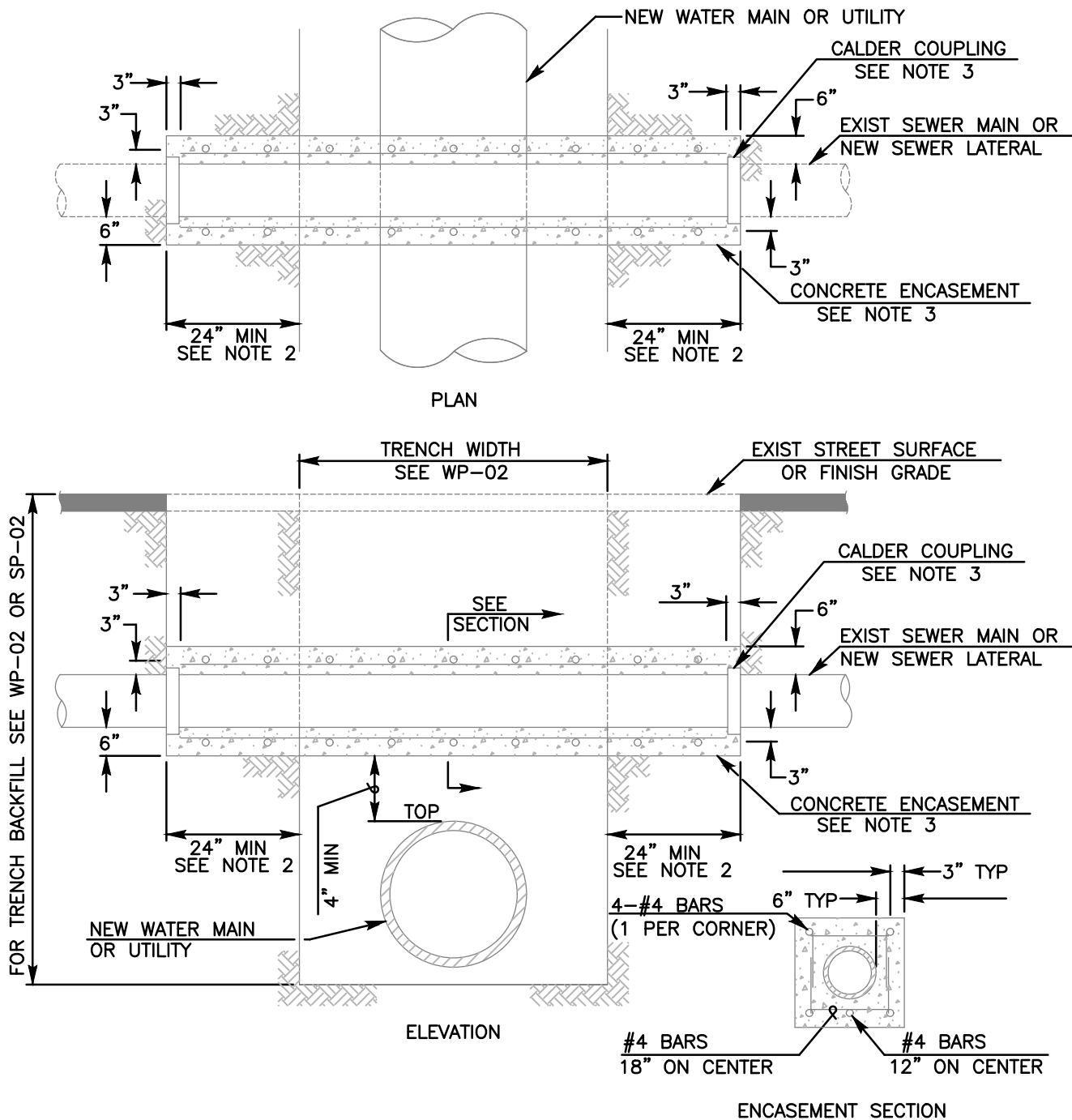
#### NOTES:

- 1) REFER TO AGENCY SPECIFICATIONS WHERE APPLICABLE
- 2) THE DETAILS SHOWN REPRESENT THE MINIMUM REQUIRED. THE ENGINEER OF WORK IS REQUIRED TO PROVIDE A SUBMITTAL TO THE AGENCY OF JURISDICTION FOR REVIEW AND APPROVAL BY THE AGENCY'S ENGINEER PRIOR TO INSTALLATION
- 3) WALLS SHALL BE REINFORCED CONCRETE OR 8" x 8" x 16" CONCRETE BLOCK, REINFORCED AND ALL CORES FILLED WITH GROUT SEE SPECIFICATIONS
- 4) FOR GRADES OVER 50%, SLOPE PROTECTION SHALL ALSO INCLUDE AC PAVING, CONCRETE SLAB OR GUNITÉ BLANKET PLACED OVER THE PIPELINE ALIGNMENT
- 5) 4" GUNITÉ BLANKET WITH 6" SQUARE x 10 GAGE WIRE FABRIC AT THE ENGINEERS DISCRETION

LEGEND ON PLANS

Revision	By	Approved	Date	SAN DIEGO REGIONAL STANDARD DRAWING	RECOMMENDED BY THE SAN DIEGO REGIONAL STANDARDS COMMITTEE
ORIGINAL		J. Tomasulo	03/05		
Reviewed	BK	B. KNOLL	04/15	SLOPE PROTECTION INSTALLATIONS	 03/24/2022 Chairperson R.C.E. 52241 Date
Reviewed	BK	B. KNOLL	10/18		
Reviewed	RP	S. Engeda	03/22		
					DRAWING NUMBER <b>SP-05</b>




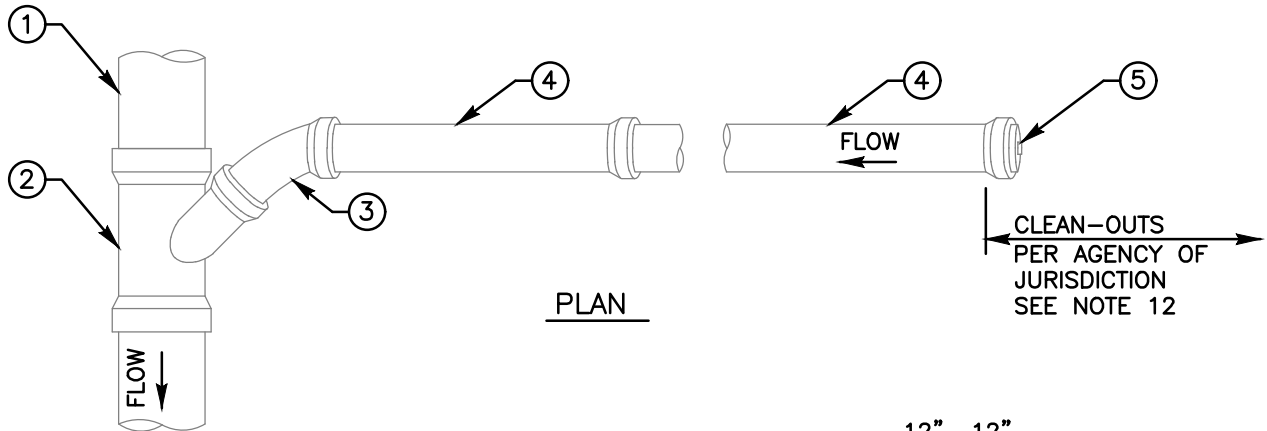


NOTES:

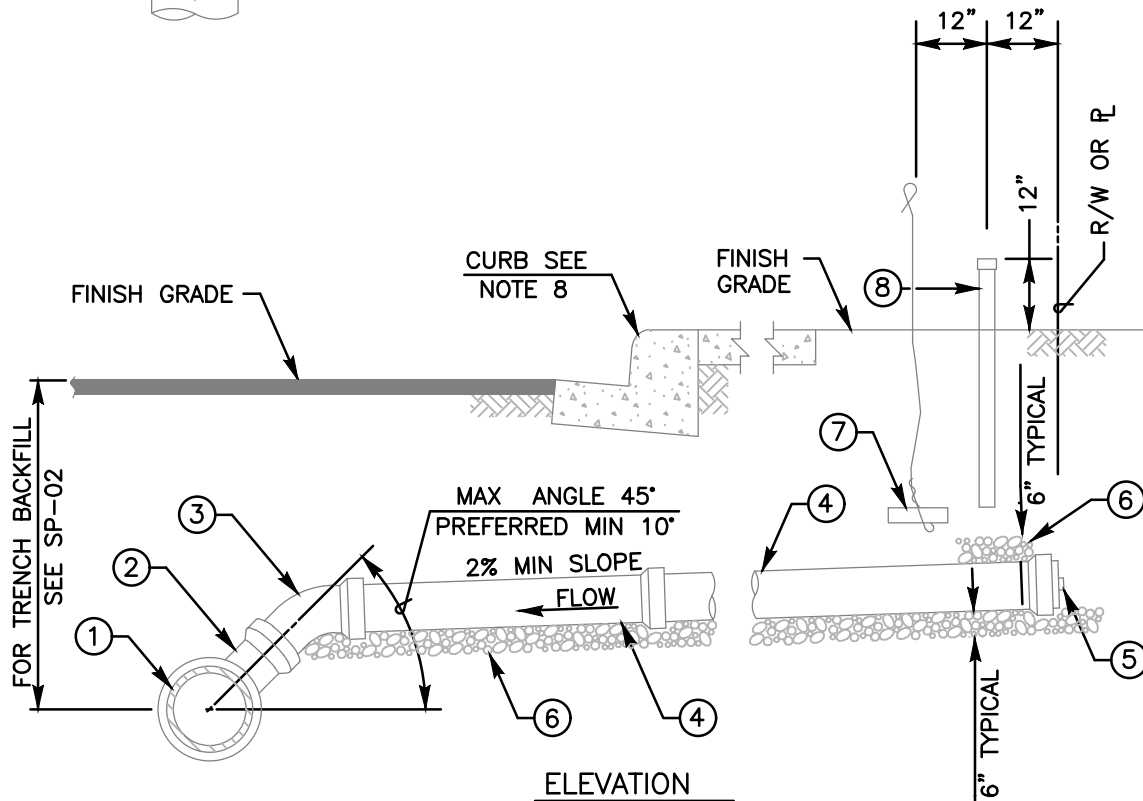
- 1) REFER TO AGENCY SPECIFICATIONS FOR PROTECTION OF EXISTING FACILITIES
- 2) ENCASEMENT SHALL EXTEND TO FIRST JOINT BEYOND BOTH SIDES OF TRENCH (24" MIN, 48" MAX OF SUITABLE NATIVE SUPPORT BEYOND EDGE OF TRENCH).
- 3) CONCRETE ENCASEMENT REQUIRED FOR SEWER MAINS ONLY. CALDER COUPLINGS REQUIRED FOR SEWER LATERALS ONLY. SEWER LATERALS TO BE REPLACED WITH SCH. 80 PVC WITH NO INTERMEDIATE JOINTS.
- 4) FOR PIPE BEDDING AND TRENCH BACKFILL SEE WP-02 OR SP-02.

LEGEND ON PLANS

Revision	By	Approved	Date	SAN DIEGO REGIONAL STANDARD DRAWING		RECOMMENDED BY THE SAN DIEGO REGIONAL STANDARDS COMMITTEE	
ORIGINAL		J. Tomasulo	03/05	<b>PIPE SUPPORT FOR UNDERCUT SEWER MAINS OR SEWER LATERALS</b>		 03/24/2022 Chairperson R.C.E. 52241 Date	
Reviewed	BK	B. KNOLL	04/15				
Reviewed	BK	B. KNOLL	10/18				
Reviewed	RP	S. Engeda	03/22				
						DRAWING NUMBER	<b>SP-09</b>



PLAN



ELEVATION

(INDICATE SIZE)

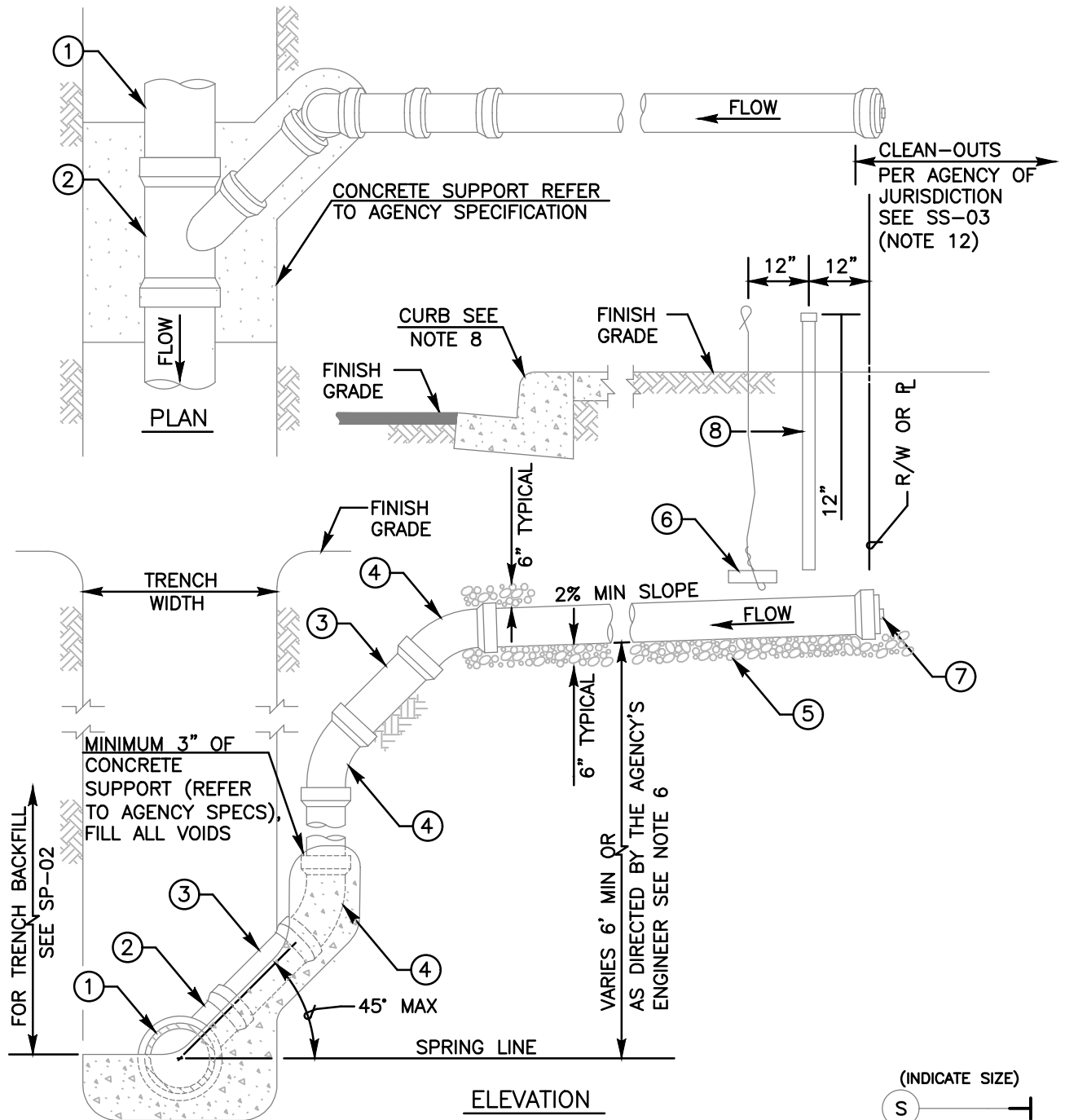


LEGEND ON PLANS

FOR SEWER LATERAL NOTES SEE DETAIL SS-03

ITEM NO	SIZE AND DESCRIPTION	ITEM NO	SIZE AND DESCRIPTION
①	SEWER MAIN	⑤	PLUG OR CAP
②	45° WYE	⑥	3/4" MAXIMUM CRUSHED ROCK
③	45° ELBOW	⑦	#9 WIRE ATTACHED TO A BRICK
④	PIPE LATERAL SEE NOTE 3 & 5	⑧	4" PVC PIPE WITH GLUED CAP
Revision	By	Approved	Date
ORIGINAL		Kercheval	12/75
Reviewed	BK	B. KNOLL	04/15
Reviewed	BK	B. KNOLL	10/18
Reviewed	RP	S. Engeda	03/22
SAN DIEGO REGIONAL STANDARD DRAWING			
4" AND 6" SEWER LATERAL INSTALLATION			
RECOMMENDED BY THE SAN DIEGO REGIONAL STANDARDS COMMITTEE			
Chairperson R.C.E. 52241 Date 03/24/2022			
DRAWING NUMBER SS-01			




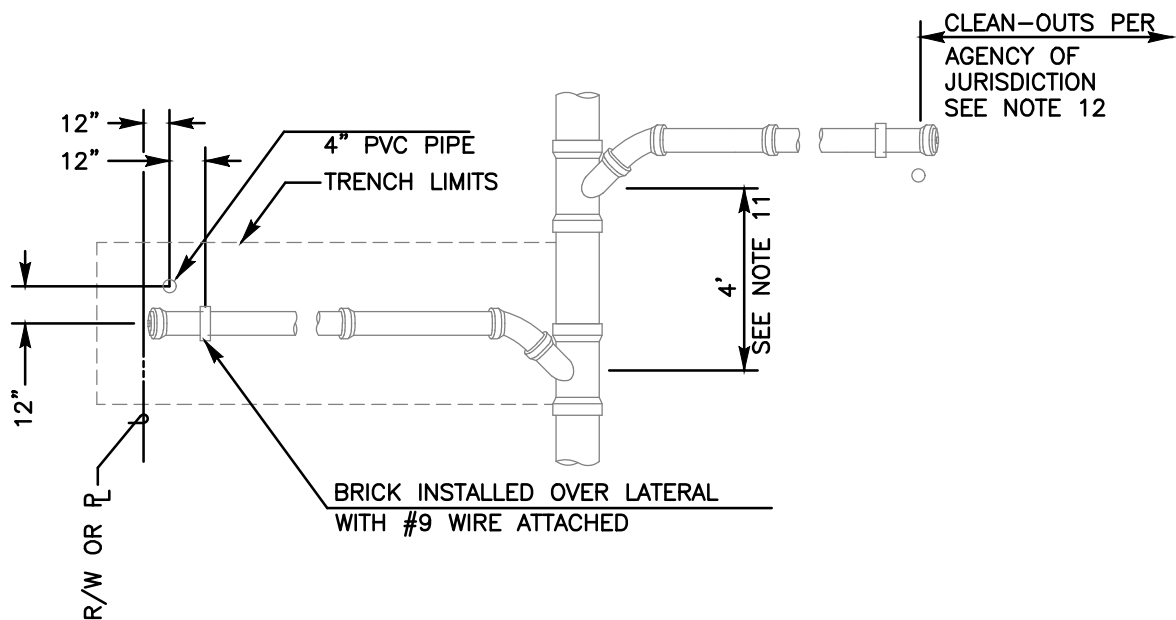


FOR SEWER LATERAL NOTES SEE DETAIL SS-03

(INDICATE SIZE)  
S ————  
LEGEND ON PLANS

ITEM NO	SIZE AND DESCRIPTION			ITEM NO	SIZE AND DESCRIPTION		
①	SEWER MAIN			⑤	3/4" MAXIMUM CRUSHED ROCK		
②	45° WYE			⑥	#9 WIRE ATTACHED TO A BRICK		
③	PIPE			⑦	PLUG OR CAP		
④	45° ELBOW			⑧	4" PVC PIPE WITH GLUED CAP		

Revision	By	Approved	Date	SAN DIEGO REGIONAL STANDARD DRAWING		RECOMMENDED BY THE SAN DIEGO REGIONAL STANDARDS COMMITTEE	
ORIGINAL		Kercheval	12/75			 03/24/2022 Chairperson R.C.E. 52241 Date	
Delete Metric	MR	B. KNOLL	03/11				
Reviewed	BK	B. KNOLL	10/18				
Reviewed	RP	S. Engeda	03/22				
				4" AND 6" DEEP-CUT SEWER LATERAL INSTALLATION		DRAWING NUMBER SS-02	




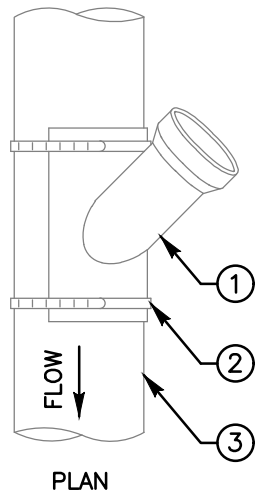
SEWER LATERAL DETAIL  
SEE NOTE 10 BELOW

NOTES:

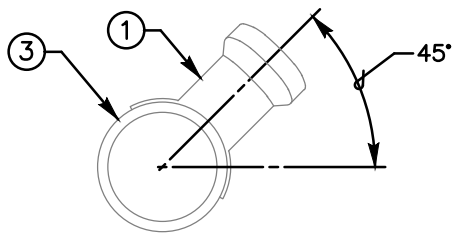
- 1) REFER TO AGENCY SPECIFICATIONS WHERE APPLICABLE
- 2) IN NO CASE SHALL LATERAL CONNECT DIRECTLY ON TOP OF SEWER MAIN
- 3) LATERAL SHALL BE INSTALLED TO PROPERTY LINE UNLESS SPECIFIED ON PLANS
- 4) MINIMUM 4' COVER ABOVE LATERAL AT PROPERTY LINE
- 5) LATERAL TO HAVE A MINIMUM SLOPE OF 2%
- 6) VERTICAL PIPE SHALL BE BRACED WHILE BACKFILLING TRENCH
- 7) INSTALL WARNING/IDENTIFICATION TAPE AS SHOWN ON SP-01
- 8) STAMP OR CHISEL A 2" HIGH "S" IN CURB FACE OVER LATERAL TO IDENTIFY SEWER LATERAL LOCATION
- 9) MATERIALS SHALL BE SELECTED FROM THE AGENCY'S APPROVED MATERIALS LIST
- 10) FOR SEWER LATERAL INSTALLATIONS SEE SS-01 AND SS-02
- 11) FOR SEWERS SPECIFIED AS PVC PIPE, A MINIMUM 3' SECTION OF PIPE IS REQUIRED BETWEEN FITTINGS
- 12) SEWER CLEAN-OUT SEE SC-01 TYPE B AS REQUIRED BY AGENCY OF JURISDICTION

(INDICATE SIZE)  
S ————  
LEGEND ON PLANS

Revision	By	Approved	Date	SAN DIEGO REGIONAL STANDARD DRAWING	RECOMMENDED BY THE SAN DIEGO REGIONAL STANDARDS COMMITTEE
ORIGINAL		Kercheval	12/75		
Delete Metric	MR	B. KNOLL	03/11	SEWER LATERAL NOTES AND DETAIL	 03/24/2022 Chairperson R.C.E. 52241 Date
Reviewed	BK	B. KNOLL	10/18		
Reviewed	RP	S. Engeda	03/22		
					DRAWING NUMBER <b>SS-03</b>

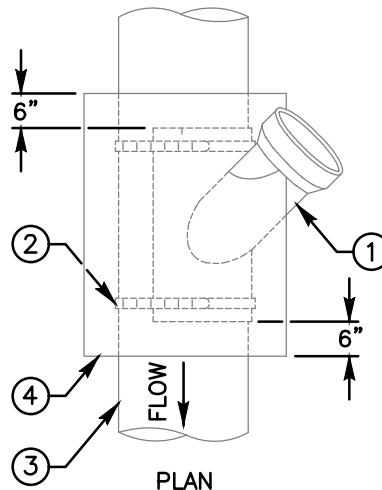


PLAN

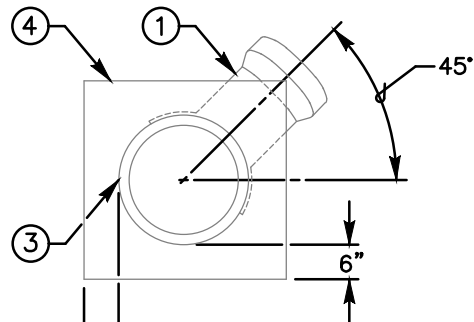


ELEVATION

CUT IN WYE CONNECTION  
TYPE A



PLAN



ELEVATION

CUT IN WYE CONNECTION  
TYPE B

NOTES:

- 1) REFER TO AGENCY SPECIFICATIONS WHERE APPLICABLE
- 2) CONNECTIONS TO EXISTING SEWER MAINS TO BE MADE BY AGENCY PERSONNEL IN ACCORDANCE WITH SPECIFICATIONS UNLESS OTHERWISE NOTED ON PLANS
- 3) IN NO CASE SHALL CONNECTION BE MADE DIRECTLY ON TOP OF SEWER MAIN
- 4) NO MORE THAN ONE CUT IN WYE WILL BE ALLOWED FOR EACH LENGTH OF EXISTING VCP SEWER MAIN
- 5) FOR SEWER LATERAL INSTALLATION SEE SS-01 AND SS-02
- 6) FOR TRENCH BACKFILL SEE SP-02
- 7) MATERIALS SHALL BE SELECTED FROM THE AGENCY'S APPROVED MATERIALS LIST

(INDICATE SIZE)  
S ————  
LEGEND ON PLANS

ITEM NO	SIZE AND DESCRIPTION	ITEM NO	SIZE AND DESCRIPTION
①	45° SADDLE WYE WITH GASKET	③	EXISTING SEWER MAIN
②	STAINLESS STEEL HOSE CLAMPS (2-EACH)	④	CONCRETE ENCASEMENT

Revision	By	Approved	Date	SAN DIEGO REGIONAL STANDARD DRAWING		RECOMMENDED BY THE SAN DIEGO REGIONAL STANDARDS COMMITTEE	
ORIGINAL		Kercheval	12/75				
Reviewed	BK	B. KNOLL	04/15	<b>4" AND 6" SEWER CUT-IN WYE CONNECTIONS</b>		<i>Saman Engeda</i> 03/24/2022	
Reviewed	BK	B. KNOLL	10/18			Chairperson R.C.E. 52241 Date	
Reviewed	RP	S. Engeda	03/22			DRAWING NUMBER <b>SS-04</b>	