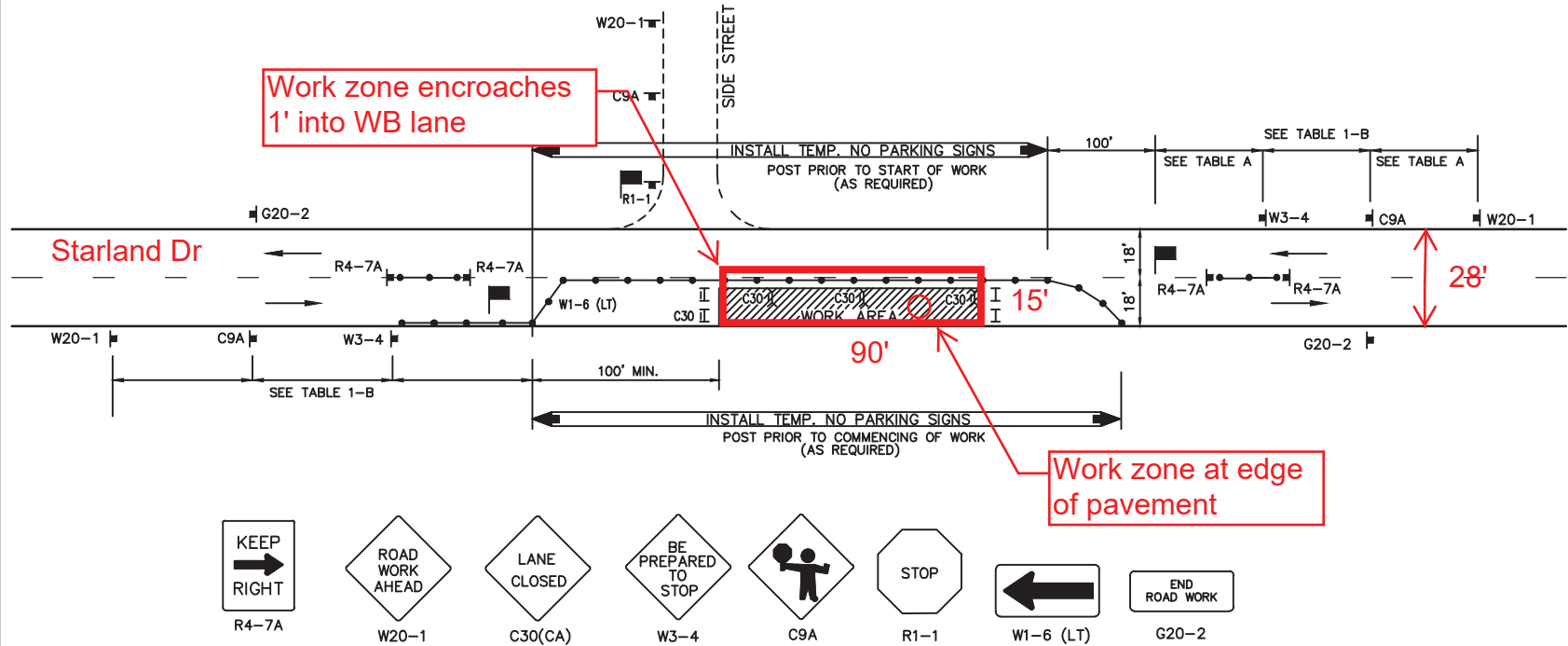


Overview Map

Example #1



Use most current Regional Standard



LEGEND

- CONE
- ++ BARRICADE
- FLAGGER
- SIGN
- ◻ FLASHING ARROW SIGN
- ▨ WORK AREA
- TRAFFIC DIRECTION

AGENCY ENGINEER'S COMMENTS

Access manhole #1234 in EB lane

SUBMITTED BY:

NAME

COMPANY

ADDRESS

PHONE

AGENCY USE

POSTED SPEED LIMIT	APPROACH SPEED	TAPER LENGTH	SPACING OF CONES	SIGN SPACING

GENERAL NOTES

FOR HOURS OF DARKNESS, CHANGE COMES TO VERTICAL BARRICADES WITH STEADY BURN LIGHTS. THIS PLAN MAY NOT APPLY TO SIGNALIZED OR MULTI-WAY STOP INTERSECTIONS. CONSULT THE LOCAL JURISDICTION WHEN PREPARING TRAFFIC CONTROL PLANS NEAR THESE INTERSECTIONS. THIS PLAN MAY NOT APPLY WHEN THE WORK AREAS AFFECT BIKE LANES, SIDEWALKS PEDESTRIAN ACCESS AND CURVED OR NARROW ROADWAYS. CONSULT THE APPROVING AGENCY WHEN PREPARING THE TRAFFIC CONTROL PLANS OR THESE AREAS.

NOTHING CONTAINED ON THIS DRAWING SHALL PREVENT LOCAL JURISDICTIONS FROM MODIFYING CHANGING OR ADOPTING NEW SPECIFICATIONS DEEMED NECESSARY. CRITERIA FOR POSITION, LOCATION AND USE OF TRAFFIC CONTROL DEVICES IS SOLELY FOR THE PURPOSE OF GUIDANCE TO ASSIST IN THE SET UP OF THE TRAFFIC CONTROL PLANS.

TCP IS REQUIRED FOR ALL TRAFFIC CONTROL PLANS.

RECOMMENDED BY THE SAN DIEGO REGIONAL STANDARDS COMMITTEE

Chairperson R.C.E. 19246

12/17/15

DRAWING NUMBER TCP-09

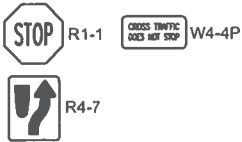
SAN DIEGO REGIONAL STANDARD DRAWING

SIDE OF ROAD WORK AREA

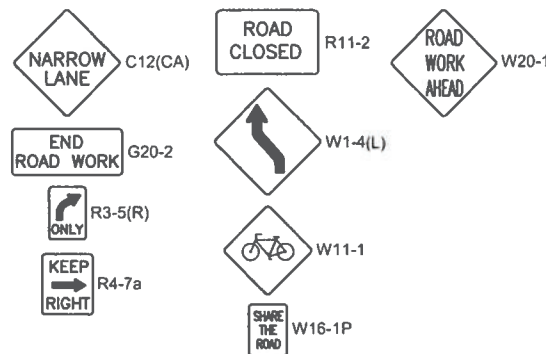
TWO LANE TRAFFIC CONTROL WITH FLAGGERS

Revision	By	Date
Revised	BUSS	2/11
Reviewed	DG	1/15

EXISTING SIGNS (THIS SHEET ONLY)



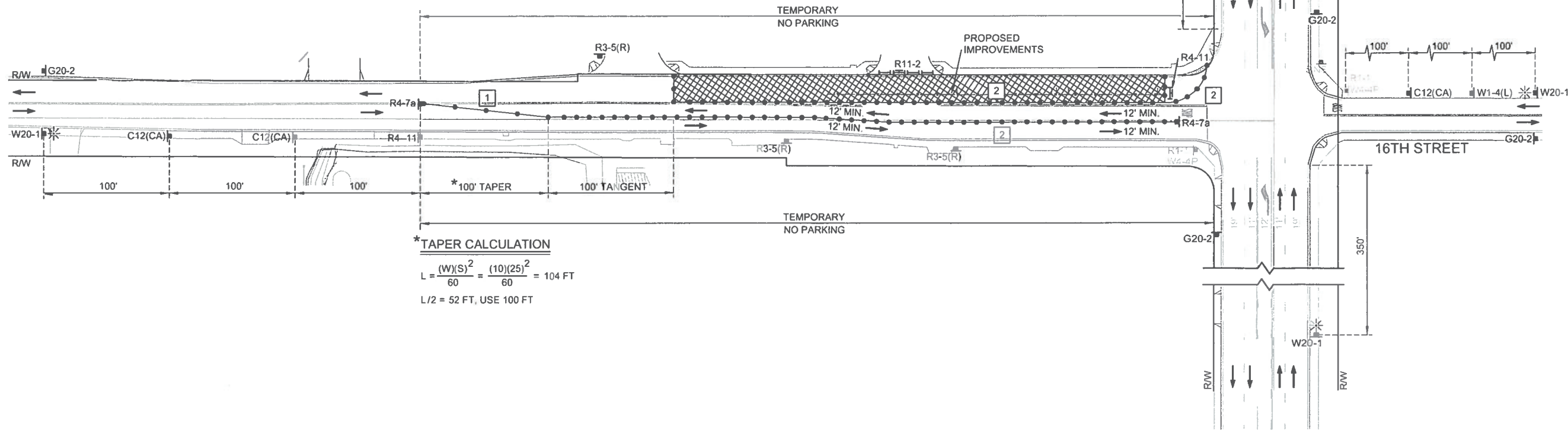
TEMPORARY CONSTRUCTION SIGNS (THIS SHEET ONLY)



CONSTRUCTION NOTES (THIS SHEET ONLY)

- 1 DELINEATORS SHALL BE PLACED AT 25' INTERVALS.
2 DELINEATORS SHALL BE PLACED AT 10' INTERVALS.

Example #3



*TAPER CALCULATION

$$L = \frac{(W)(S)^2}{60} = \frac{(10)(25)^2}{60} = 104 \text{ FT}$$

L/2 = 52 FT, USE 100 FT

ANTICIPATED WORK HOURS WITHIN CALTRANS RIGHT-OF-WAY

- 24 HOURS WARNING SIGNS SETUP ONLY

DECLARATION OF RESPONSIBLE CHARGE

I HEREBY DECLARE THAT I AM THE ENGINEER OF WORK FOR THIS PROJECT, THAT I HAVE EXERCISED RESPONSIBLE CHARGE OVER THE DESIGN OF THE PROJECT AS DEFINED IN SECTION 6703 OF THE BUSINESS AND PROFESSIONS CODE, AND THAT THE DESIGN IS CONSISTENT WITH CURRENT STANDARDS.

I UNDERSTAND THAT THE CHECK OF PROJECT DRAWINGS AND SPECIFICATIONS BY THE COUNTY OF SAN DIEGO IS CONFINED TO A REVIEW ONLY AND DOES NOT RELIEVE ME, AS ENGINEER OF WORK, OF MY RESPONSIBILITIES FOR PROJECT DESIGN.

NOTE

FOR TRAFFIC CONTROL LEGEND, SEE SHEET 06.

COUNTY OF SAN DIEGO
DEPARTMENT OF PUBLIC WORKS

APPROVED BY: _____

DATE: _____

BENCHMARK

DESCRIPTION: STD 2 INCH CADT BRASS DISK STAMPED
63-23.7 SET IN SIDEWALK, LOCATED 0.7 MILES
SW OF INTERSECTION HWY 67 & MAIN ST.
COUNTY OF SAN DIEGO, OBJECT ID 1477

ELEVATION: 1416.86

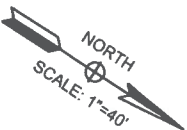
DATUM: NAVD83

POSTED SPEED

MAIN STREET = 35 MPH
16TH STREET = 25 MPH

DESIGN SPEED

MAIN STREET = 45 MPH
16TH STREET = 25 MPH



RAMONA MUNICIPAL WATER DISTRICT REVISIONS			
No.	Description	Approved By	Date

AS-BUILT DRAWING	
REVISIONS DRAWN BY: _____	DATE: _____
APPROVED BY: _____	DATE: _____
FOR RAMONA MUNICIPAL WATER DISTRICT	

LINSOTT, LAW & GREENSPAN, ENGINEERS
4542 Rufner Street, Suite 100
San Diego, Ca 92111
(858)300-8800 (858)300-8810 (774)



COUNTY OF SAN DIEGO REVISIONS			
No.	Description	Approved By	Date

SHEET 07	RAMONA MUNICIPAL WATER DISTRICT	9 SHEETS
PUBLIC WATER IMPROVEMENTS PLANS FOR RAMONA SENIOR APARTMENTS 16TH STREET (STAGE 2)		
CALIFORNIA COORDINATE INDEX 314N - 1803E		
Drawn By: HUNG Q. LUONG DESIGN ENGINEER	Approved By: _____ ENGINEERING MANAGER - R. C. E.	
Designed By: JOHN P. KEATING PROJECT MANAGER - R. C. E.	Recommended for Approval By: _____ SENIOR ENGINEER - R. C. E.	
DWG. NO. 17014-DP-07	Approved By: _____ WATER OPERATIONS MANAGER	