

# COUNTY OF SAN DIEGO SOLID WASTE ORDINANCE UPDATE

SEPTEMBER 1, 2020  
PUBLIC MEETING

(MEETING CONDUCTED VIA MICROSOFT TEAMS)



# PRESENTATION TOPICS

- Reasons for change
- Residential and commercial requirements
  - Recycling requirements
  - Self hauler compliance
  - Additional multi-family and commercial requirements
  - Waivers
- Food recovery requirements
- Large events and venues recycling and food recovery
- Hauling system modifications
- Timeline

# REASONS FOR CHANGE

## County diversion goals

- 75% by 2025
- 80% by 2030

## SB 1383 regulations

- Generator requirements
- Self-hauler requirements
- Food recovery program
- Hauler oversight

## AB 1826/ AB 827 regulations

- Multi-family/commercial requirements
- Organics recycling required
- Premises with 2 CY/week or more of materials

# SB 1383 STATEWIDE TARGETS

# 2020

# 50%

Reduction of  
organic waste to  
landfill

# 75%

Reduction of  
organic  
waste to  
landfill

# 20%

Edible food  
recovery

# 2025

# SB 1383 COMPLIANCE DATE

# January 1, 2022

- Jurisdictions' ordinances and programs are in place
- Jurisdictions initiate compliance monitoring programs
- Haulers have organics collection and processing programs
- Generators have compliant organics programs, except those with waivers or that are otherwise excluded
- Food recovery organizations and services commence recordkeeping and reporting



# PROPOSED SOLID WASTE ORDINANCE REVISIONS



# FOCUS OF ORDINANCE CHANGES

## SB 1383 regulatory requirements

- Residential and commercial generators
- Self-haulers
- Multi-family and commercial property owners
- Commercial edible food generators
- Food recovery organizations and services
- Facility operators
- CALGreen

## AB 1826/AB 827 regulatory requirements

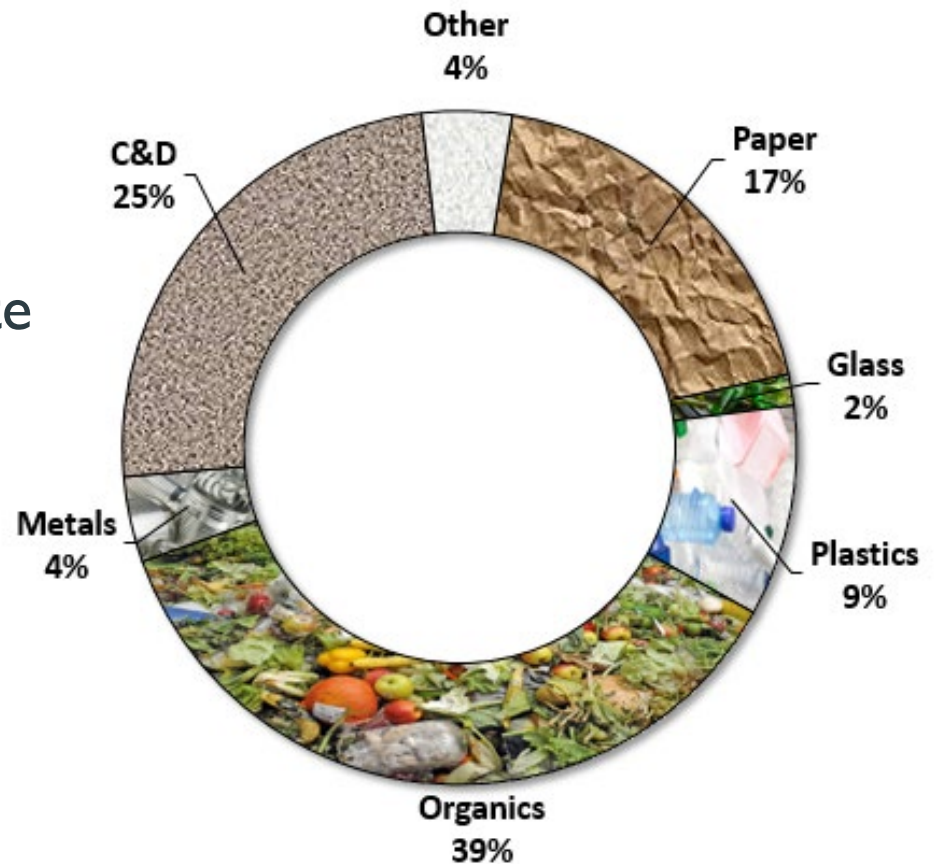
- Multi-family and commercial property owners

## Hauling system modifications

# RECYCLING REQUIREMENTS FOR RESIDENTS AND BUSINESSES

Compliance Date  
October 1, 2021

- Must source separate designated recyclable materials and organic materials and store separately from solid waste
- Arrange for recycling and processing of designated materials
- Subscribe to 3-stream collection services
- Self-haul



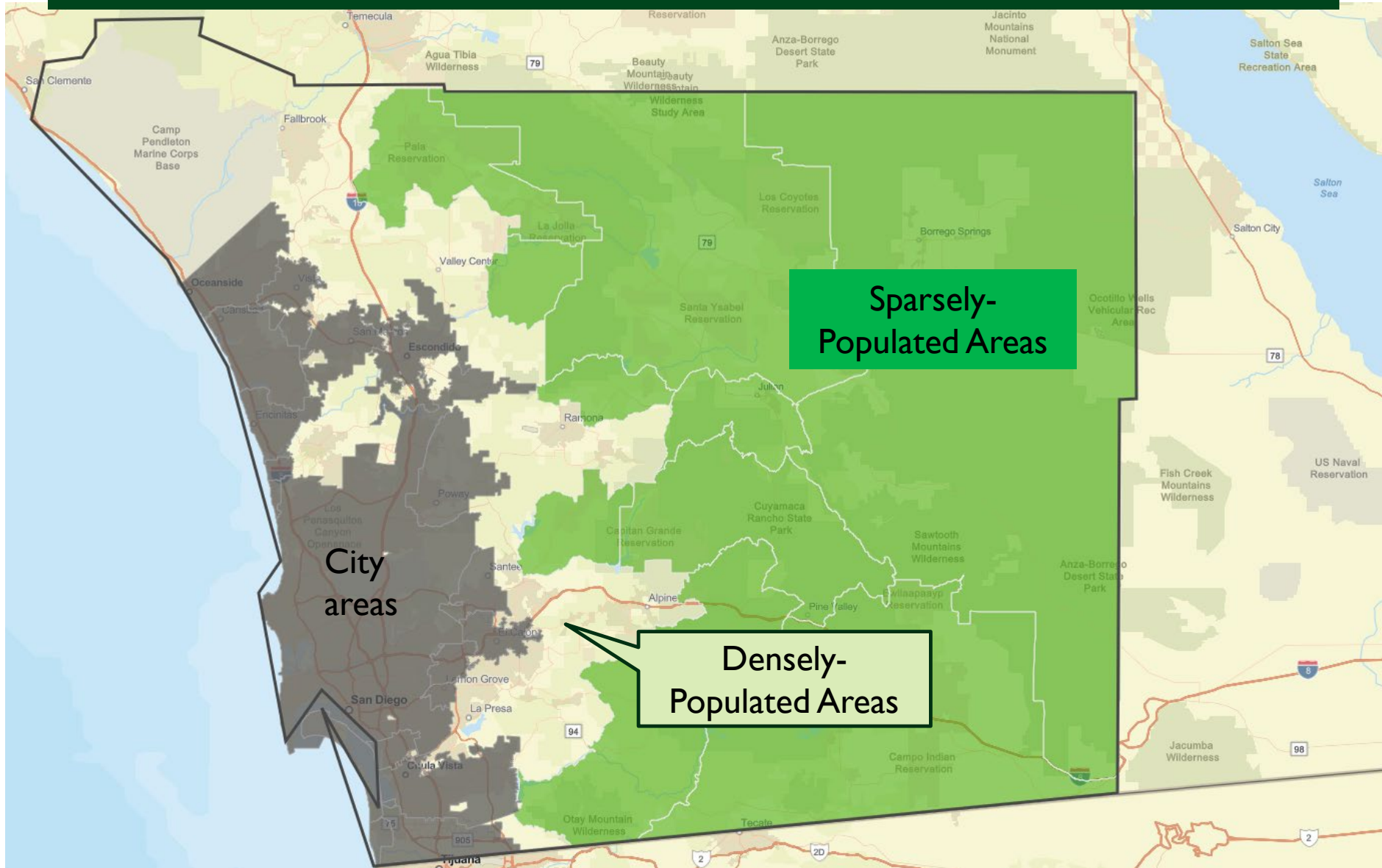


# DESIGNATED MATERIALS

	Recyclable Materials	Organic Materials
Current List	<ul style="list-style-type: none"> <li>Aluminum</li> <li>Glass bottles and jars</li> <li>Paper products</li> <li>Cardboard</li> <li>Rigid plastics (#1- #7)</li> <li>Tin and bi-metal containers</li> <li>White goods</li> </ul>	Green materials (residential only)
Proposed Changes (effective October 1, 2021)	No changes	Added:* Green materials (all generators) Wood/lumber (all generators) Food waste, including food-soiled paper (all generators)

\* Some exceptions apply as noted on prior slide.

# Unincorporated County: Densely- and Sparsely-Populated Areas



# RECYCLING REQUIREMENTS FOR RESIDENTS AND BUSINESSES

Compliance Date  
October 1, 2021

- All single-family, multi-family, commercial business must comply unless exempted below or through waivers
- Densely-populated areas
  - Multi-family/commercial with less than 2 CY/week of total materials in densely-populated areas are exempt from organics recycling requirements through 9/30/21
  - Generators that secure specific waivers from County (described later)
- Sparsely-populated areas
  - Single-family are exempt from wood waste and food waste recycling
  - Multi-family/commercial with less than 2 CY/week of total materials per week are exempt from organics recycling
  - Multi-family with 2 CY/week or more of total materials per week must recycle organics except for food waste
  - Generators that secure specific waivers from County (described later)

# WAIVERS FOR RESIDENTS AND BUSINESSES

## De minimis

- Multi-family and commercial only
- Low volume of organic materials

## Physical space

- Multi-family and commercial only
- Limited space for containers

## Organic materials recycling

- Multi-family or commercial with  $\geq 2$  CY/wk of material
- Limited space, low volumes, extraordinary/unforeseen events

## On-site organics management

- All generators
- On-site composting or in-vessel system or delivery to community compost facility

# COMPLIANCE OPTIONS FOR RESIDENTS AND BUSINESSES

Compliance Date  
October 1, 2021

- Subscribe to 3-stream collection service
  - Non-exclusive franchise collector
  - Certified recyclable materials collector
- Self haul materials
- Apply for a waiver for some materials and generators



# SELF-HAUL COMPLIANCE

Compliance Date  
October 1, 2021

- Source separated designated recyclable and organic materials
- Transport designated recyclable and organic materials to acceptable processing or transfer facility
- Transport solid waste to a landfill or transfer facility that then landfills materials

# SELF-HAUL REGISTRATION AND REPORTING

Requirements for commercial and multi-family generators and for single-family generators that generate one cubic yard or more of solid waste weekly

- Register with County
- Maintain annual log documenting self-haul activities
  - Receipts and weight tickets from facilities
  - Amount of material (in cubic yards or tons) transported
  - If the material is transported to a facility that does not have scales to weigh material, an invoice from facility estimating weight or volume
- Make log available for inspection by County

# ADDITIONAL REQUIREMENTS FOR MULTI-FAMILY

Compliance Date  
October 1, 2021

## Densely-populated areas

- Have adequate number and size of containers for tenants, employees, contractors
- Annually educate tenants about recycling and organic materials recovery and proper sorting
- Provide education to new tenants within 14 days of move-in
- Accommodate inspections and monitoring by County or its designee

## Densely- and sparsely-populated areas, premises with 2 CY/week or more

- Require gardeners/ landscapers to recycle green materials and wood waste



# ADDITIONAL REQUIREMENTS FOR COMMERCIAL

Compliance Date  
October 1, 2021

## Densely-populated areas

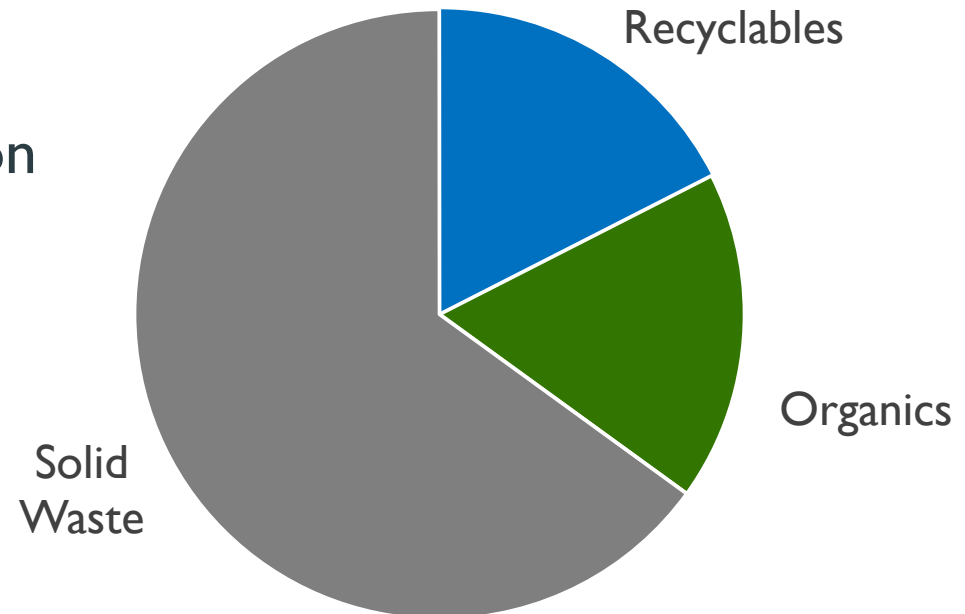
- Provide containers indoors/outdoors for employees, customers, and tenants; colors matching collection containers; properly label
- Train/educate employees annually on proper material sorting
- Provide education for new tenants and new hires
- Prohibit employees from placing materials in wrong containers
- Inspect containers for contamination and re-educate employees
- Accommodate inspections/monitoring by County or designee
- Comply with food recovery requirements if Tier 1 or Tier 2 commercial edible food generator

## Densely- and sparsely-populated areas, premises with 2 CY/week or more

- Require gardeners/landscapers to recycle designated organic materials

# ADDITIONAL REQUIREMENTS FOR MULTI-FAMILY AND COMMERCIAL

- Meet County's minimum diversion service level ratio
- 35% of total weekly collection capacity to be recycling and organics
- Multi-family weekly minimums per dwelling unit
  - 20 gallons per unit for recycling
  - 5 gallons per unit for organics



# SB 1383 COMMERCIAL EDIBLE FOOD GENERATORS



## Tier 1

January 1, 2022

- Supermarket
- Grocery store (7,500+ sq. ft.)
- Food service provider
- Food distributor
- Wholesale food vendor



## Tier 2

January 1, 2024

- Restaurant (250+ seats, 5,000+ sq. ft.)
- Hotel with onsite food and 200+ rooms
- Health facility with onsite food and 100+ beds
- Large events and venues
- State agency with cafeteria (250+ seats)
- Local education facility with on-site food facility

# COMMERCIAL EDIBLE FOOD GENERATOR REQUIREMENTS

Compliance Dates  
January 1, 2022 - Tier 1  
January 1, 2024 - Tier 2

- Arrange for maximum recovery of edible food
- Develop contracts with food recovery organization or food recovery service provide
- Accommodate inspections by County or its designee
- Maintain records



# FOOD RECOVERY ORGANIZATIONS AND SERVICES

Compliance Date  
January 1, 2022



- Maintain records
  - Contracts with commercial generators
  - Quantity collected per commercial generator
  - Quantity transported to other food recovery organizations
- Inform generators about California and Federal Good Samaritan Law(s)
- Submit annual reports to County

# LARGE EVENTS AND VENUES

Compliance Date  
October 1, 2021

- Large event
  - Charges an admission price and serves more than 2,000 individuals per day (e.g. sporting event or flea market)
- Large venue
  - Permanent facility that annually seats or serves more than 2,000 individuals (e.g. zoo, conference center, airport)
- Source separated designated recyclable and organic materials
- Comply with three-container collection service or self-haul
- If generating edible food themselves
  - Adhere to Tier 2 requirements by January 1, 2024
- If contracting food services to outside vendors
  - Require all food facilities to follow requirements by January 1, 2024

# HAULING SYSTEM MODIFICATIONS

## Compliance Dates

May 15, 2021 – CRMCS, NEFAs

Oct 1, 2021 – NEFA programs

2020-2021 – C&D ordinance

- Address changes to non-exclusive franchise arrangements, collector types, and service requirements
- Establish system for certifying recyclable materials collectors (CMRCs)
- Modify construction and demolition debris recycling requirements (Note: These modifications were adopted by the County Board of Supervisors in early 2020.)

# TIMELINE

<b>County Milestones</b>	<b>Completion Date</b>
Accept stakeholder comments	Sep 15, 2020
Finalize solid waste ordinance	Sep 2020 - Feb 2021
Seek Board approval	Mar 2021

<b>Regulated Entity Milestones</b>	<b>Compliance Date</b>
Residential and commercial generators	Oct 1, 2021
Tier one commercial edible food generators	Jan 1, 2022
Food recovery organizations and services	Jan 1, 2022
Tier two commercial edible food generators	Jan 1, 2024



# THANK YOU



Eric Wolff, Program Coordinator

County of San Diego | Public Works  
Solid Waste Planning and Recycling

[Eric.Wolff@sdcounty.ca.gov](mailto:Eric.Wolff@sdcounty.ca.gov)

(858) 694-2468



Tracy Swanborn, Senior Manager

HF&H Consultants, LLC

[tracy@hfh-consultants.com](mailto:tracy@hfh-consultants.com)

(707) 246-4803



# SUPPLEMENTAL SLIDES

# SINGLE-FAMILY SERVICE REQUIREMENTS

1. 3-container system in densely-populated areas, with exceptions for sparsely-populated areas
2. Offering of at least 3 solid waste cart sizes (e.g., 32, 64, and 96-gallon carts)
3. Minimum of 64 gallons/week each for recycling and organics (exceptions apply, particularly for sparsely-populated areas)
4. Contractor-provided containers with consistent color/labeling to meet SB 1383
5. Weekly collection of recyclables, organics, solid waste, with exceptions for sparsely-populated areas
6. Organics to include food scraps, food-soiled compostable paper, and yard trimmings to meet SB 1383
7. Bulky item/re-use pick-ups specifying requirements of 2 pick-ups per year in densely-populated areas at no charge
8. Expanded public education, including: annual service guide; semi-annual notices; bill inserts; and contamination notices

# MULTI-FAMILY AND COMMERCIAL SERVICE REQUIREMENTS

1. 3-container system in densely-populated areas, with exceptions for sparsely-populated areas
2. Weekly organics and solid waste, with exceptions for sparsely-populated areas; and recyclables collection frequency that meets SB 1383 requirements
3. Organics to include food scraps, food-soiled compostable paper, yard trimmings
4. Bulky item collection in densely-populated areas upon customer request; charge
5. Multi-family: Weekly minimums of 20 gal/unit recycling; 5 gal/unit for organics
6. Target rec/org capacity service level ratios (35%) for multi-family and commercial with collector's focus on monitoring and supporting customers with service level ratios below the following thresholds: Yr 1 - 25%    Yr 2 - 30%    Yr 3 - 35%
7. Contractor-provided containers with consistent color/labeling to meet SB 1383
8. Expanded public education, including annual service guide; semi-annual newsletters for customer/property managers; bill inserts; and contamination notices

# FOOD RECOVERY ORGANIZATIONS AND SERVICES



## Food Recovery Organizations

- Food banks and pantries
- Homeless shelters
- Domestic shelters
- Senior centers
- Soup kitchens
- Charitable organizations

## Food Recovery Services

- Transportation providers (e.g., Peninsula Food Runners, Copia, Replate)

# CERTIFIED RECYCLABLE & ORGANIC MATERIALS COLLECTORS

- Certified recyclables materials collectors (CRMCS) system
- Covers collection of source separated recyclables, green waste, food waste, and pallets
  - Limited to 1,000 tons/year, except pallet quantities, which may be unlimited
  - No greater than 10% by volume of solid waste
  - Must achieve an annual 90% diversion rate of the recyclable materials and organic materials collected
- May charge customers for service; charges not regulated
- No franchise fees or other fees, except application and renewal fees