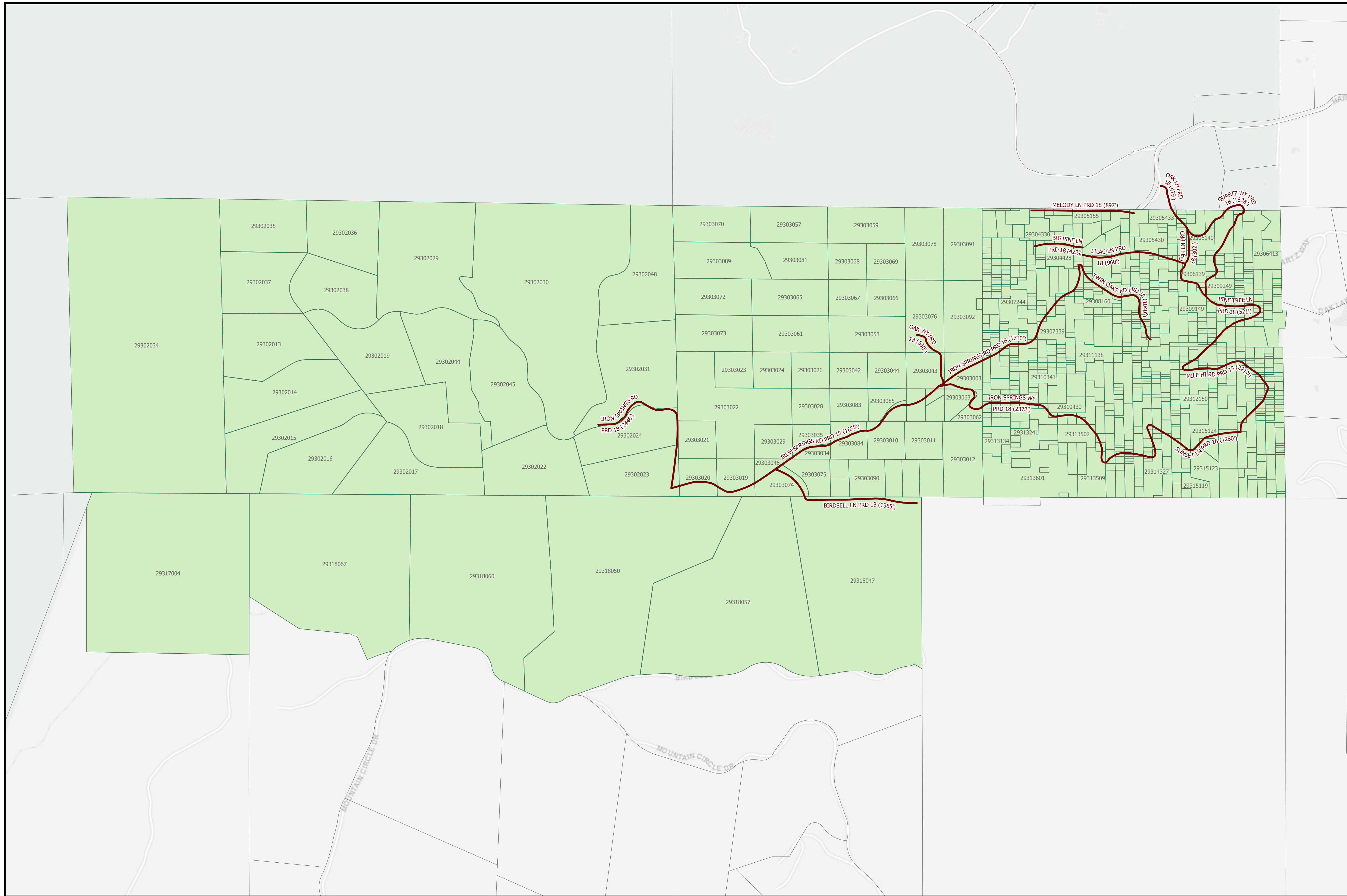


Scale 1:4,700

PRD Maintained Road

PRD Parcel



County of San Diego  
Planning & Development Services  
Land Use & Environmental Group  
Geographic Information Service

THIS MAP/DATA IS PROVIDED WITHOUT WARRANTY OF ANY KIND, EITHER EXPRESS OR IMPLIED, INCLUDING BUT NOT LIMITED TO, THE IMPLIED WARRANTIES OF MERCHANTABILITY AND FITNESS FOR A PARTICULAR PURPOSE. Note: This product may contain information from the SANDAG Regional Information System which cannot be reproduced without the written permission of SANDAG. This product may contain information reproduced with permission granted by Rand McNally & Company® to SanGIS. This map is copyrighted by Rand McNally & Company®. It is unlawful to copy or reproduce all or any part thereof, whether for personal use or resale, without the prior, written permission of Rand McNally & Company®. Copyright SanGIS 2012 - All Rights Reserved. Full text of this legal notice can be found at [http://www.sangis.org/Legal\\_Notice.htm](http://www.sangis.org/Legal_Notice.htm)

# PERMANENT ROAD DIVISION - HARRISON PARK 18