



SAN DIEGO COUNTY HEALTH CARES INITIATIVE

*IMPROVING PREVENTION AND RESPONSE PRACTICES
FOR
DOMESTIC VIOLENCE AND STRANGULATION*





SAN DIEGO COUNTY HEALTH CARES INITIATIVE ANNOUNCEMENT

PRESENTERS

Tracy M. Prior, Chief Deputy District Attorney,
San Diego County District Attorney's Office

Kristi L. Koenig, MD, FACEP, FIFEM, FAEMS
Medical Director, Emergency Medical Services, Medical Care Services Division
County of San Diego Health & Human Services Agency



IS IT IMPORTANT TO IDENTIFY NONFATAL STRANGULATION?



True or False?

*Non-fatal strangulation of an intimate partner is associated with an increased in risk of future **homicide**.*



LIVE WELL
SAN DIEGO

NONFATAL STRANGULATION AND HOMICIDE

TRUE

One of the most lethal forms of domestic violence and sexual assault

Associated with a

- SIX-fold increased risk of attempted homicide
- SEVEN-fold increased risk of completed homicide (some sources say 8x)



LIVE WELL
SAN DIEGO

WHY IMPORTANT?

- Non-fatal strangulation is a strong indicator of future lethality in intimate partner relationships.

- Healthcare staff have an important role in screening for intimate partner violence (IPV) and strangulation.

- Referral for a Domestic Assault Forensic Examination (DAFE) can make a difference in the investigation and prosecution of these crimes.

- 13% of domestic violence homicides in our county in the past 22 years were the result of strangulation.

- Domestic violence can have short and long-term health impacts such as hypertension, chronic pain, heart disease, traumatic brain injury, stroke, anxiety, depression, substance use, miscarriage.

SAN DIEGO COUNTY HEALTH CARES

- C** **Conduct Screening** for current and former intimate partner abuse
- A** **Assess** for signs and symptoms of strangulation
- R** **Report** suspicious injuries to law enforcement
- E** **Evaluate** patient (evidence collection by a Forensic Examiner)
- S** **Safety Plan** and connect patient to resources

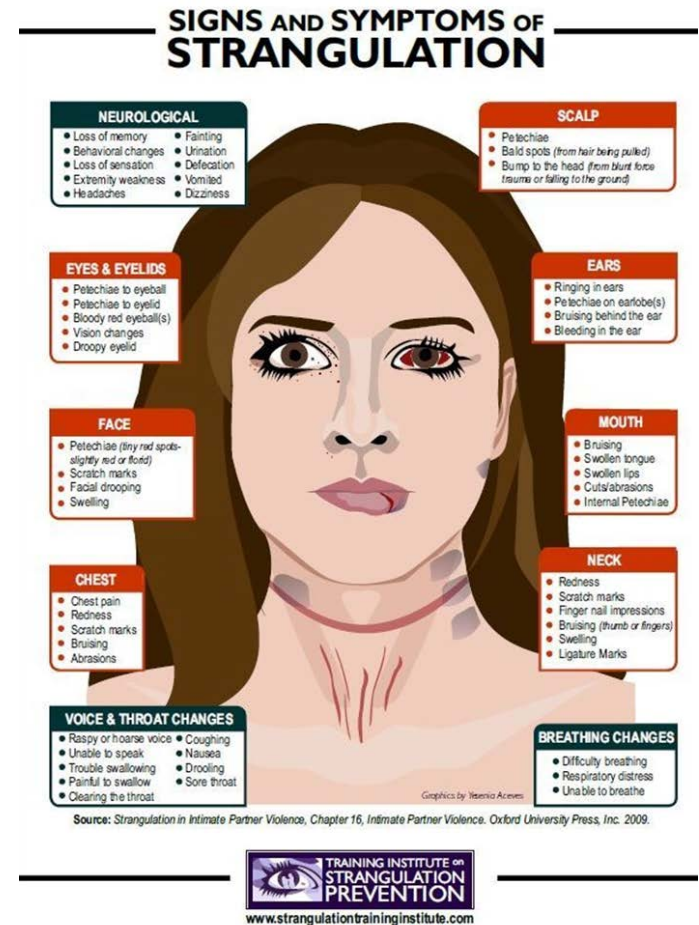


LIVE WELL
SAN DIEGO

VICTIM APPEARANCE

Recognizing strangulation signs and symptoms during medical examinations can save lives!

However, **>50% of victims** have
NO EXTERNAL SIGNS



LIVE WELL
SAN DIEGO

STRANGULATION IS SERIOUS!

Only 4 pounds of external pressure required to occlude jugular veins

Only 5 to 11 pounds of pressure required to occlude carotid arteries

Unconsciousness can occur within seconds

Death can occur within 3 to 5 minutes



LIVE WELL
SAN DIEGO

CHOKING vs. STRANGULATION

Strangulation is not “choking”

- Choking involves INTERNAL airway obstruction rather than an external force applied to the neck



LIVE WELL
SAN DIEGO



UNCONSCIOUSNESS WITHIN SECONDS



LIVE WELL
SAN DIEGO

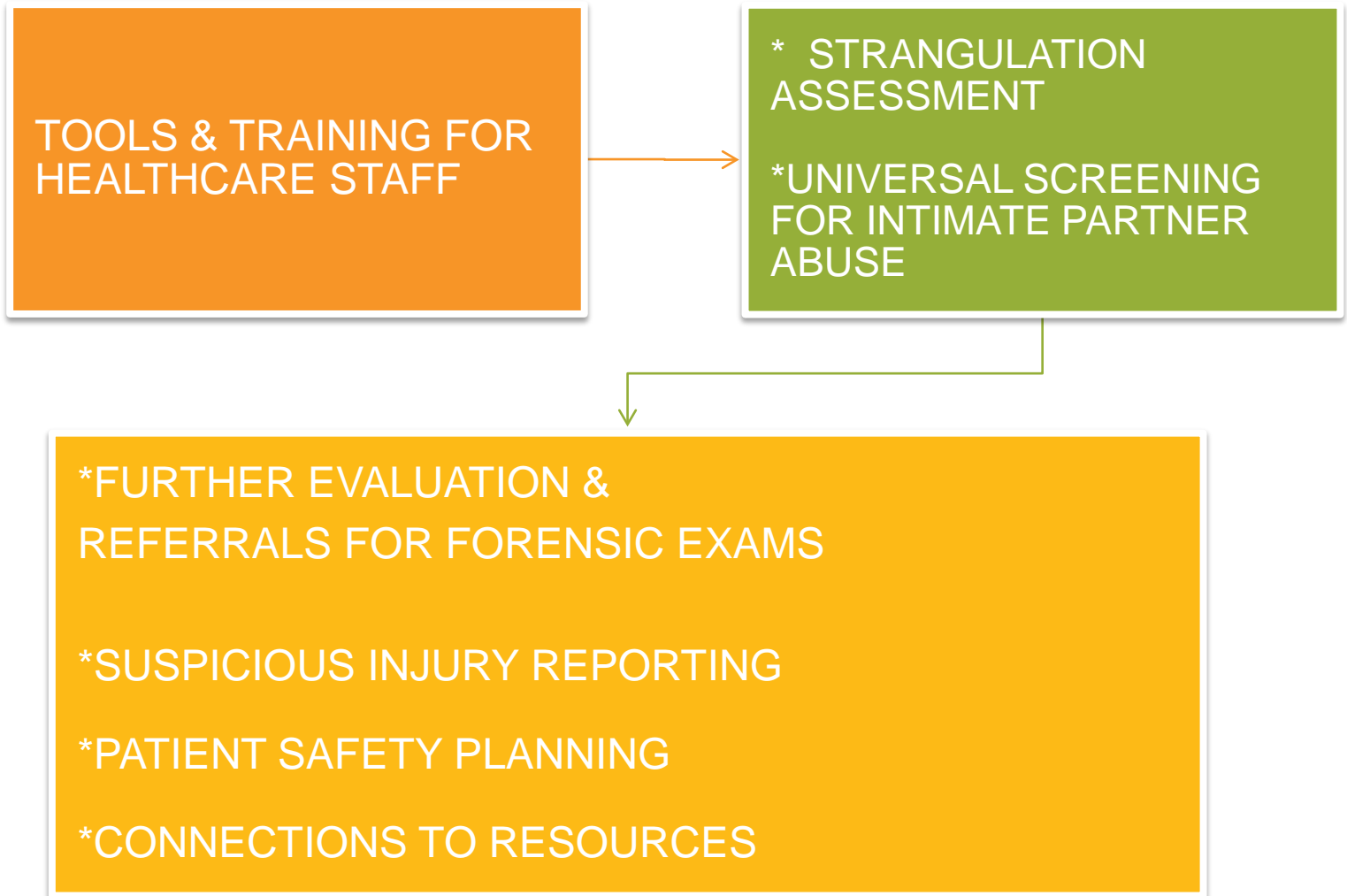
PASSING THE TORCH

FROM CRIMINAL JUSTICE TO HEALTHCARE



LIVE WELL
SAN DIEGO

INITIATIVE GOALS



LIVE WELL
SAN DIEGO

TARGET SETTINGS

Civilian and Military Hospitals and Health Systems

Colleges/Universities Student Health Centers

Community Clinics (FQHC's)

Medical/Nursing Schools

Professional Organizations

- American Academy of Family Physicians, Hospital Association of San Diego & Imperial County (HASDIC), Stroke Consortium

County Public Health Nurses



LIVE WELL
SAN DIEGO

INITIATIVE LAUNCH

- ☐ Press Conference 10/15/19
- ☐ Prevention Kits Roll-Out
 - Information, tools, resources for healthcare staff and for patients
- ☐ Train-the-Trainer Event 10/16/19
- ☐ Posters/wallet cards for healthcare sites
- ☐ Website



LIVE WELL
SAN DIEGO

SEEKING CHAMPIONS

ROLE OF A CHAMPION

- ✓ Attend the train-the-trainer on October 16th
(*Health Cares about DV Day*)
- ✓ Receive a set of Prevention Kits for your healthcare system
- ✓ Hang the posters and place the wallet cards in key areas of your healthcare site
- ✓ Request originals from HHSA Public Health after 10/16 for further duplication of kit items
- ✓ Become a spokesperson for the campaign within your organization



LIVE WELL
SAN DIEGO

SAN DIEGO COUNTY HEALTH CARES INITIATIVE

CONTACT US TO BECOME A CHAMPION

County of San Diego District Attorney's Office

Terra Marroquin, MSW

Terra.Marroquin@sdcdca.org

Public Health Services Administration

County of San Diego Health & Human Services Agency

Eunice Hong, MPH

Eunice.Hong@sdcounty.ca.gov



LIVE WELL SAN DIEGO

