



Consumer Feedback Town Hall

Public Comment Feedback Session

Town Hall Topic

Public Comment Feedback Session

DATE

October 24, 2025

TIME

2:00 PM - 3:30 PM

LOCATION

Zoom

The Purpose of the Town Hall

The NAMI San Diego Consumer Feedback Town Hall is being held on October 24th, 2025 from 2:00 PM-3:30PM to gather public comment and feedback regarding BHSA in San Diego County. The County of San Diego will provide a brief overview of BHSA. This will be followed by an open discussion guided by designated questions. This meeting will be held virtually on Zoom.

Information how to Register

Step 1: Email CommunityAdvocacy@namisd.org

Step 2: Fill out the two forms that will be sent to you.

Step 3: Prepare your comment or feedback for the event.



LIVE WELL
SAN DIEGO

Transforming Behavioral Health Together: Proposition 1

San Diego County's 2026–2029 Behavioral Health Services Act (BHSA) Integrated Plan (IP)

Consumer Feedback Town Hall

Friday, October 24, 2025

BHS Communication & Engagement (C&E) Unit

Fernando Valencia, MBA, Community Engagement Supervisor

Today's Session



LIVE WELL
SAN DIEGO

- **Welcome & Background**
 - Proposition 1/BHSA Background



About BHSA



- Proposition 1; takes effect July 1, 2026
- Modernizes the Mental Health Services Act (MHSA) passed by CA voters in 2004
- No additional funding introduced, but brings new components, requirements, and restrictions for how revenue derived from millionaire's tax may be used by counties for behavioral health programs/services

Learn More

bit.ly/BHSA_BHS



SanDiegoCounty.gov Home

Behavioral Health Services

GET HELP NOW I WANT TO FIND MENTAL HEALTH SUBSTANCE USE

Behavioral Health Services Act

The Behavioral Health Services Act, also known as BHSA, is a state law passed by voters in March 2024. BHSA updates the [Mental Health Services Act \(MHSA\)](#) by:

- Expanding service access to include treatment for people with substance use disorders,
- Prioritizing care for people with the most serious mental illness,
- Providing ongoing resources for housing and workforce development, and
- Continuing investments in prevention, early intervention, and innovative behavioral health pilot programs.

BHSA aims to close service gaps and ensure equitable access to quality care across the state. New BHSA requirements will also enhance oversight, transparency, and accountability at the state and local levels.

To learn more about BHSA:

- [Behavioral Health Transformation \(DHCS\)](#)

To receive updates about BHSA, subscribe to these statewide sites:

- [Department of Health Care Services \(DHCS\)](#)
- [California Department of Public Health \(CDPH\)](#)

Community Planning

BHSA requires counties to look at their whole behavioral health system of care through a formal Community Planning Process (CPP). The CPP supports the County of San Diego's goal to involve communities in meaningful conversations and decision-making about local behavioral health services to ensure programs reflect their unique needs and voices.

Share Input via Our Online Form

Access this online form to share insights and recommendations with BHS to help guide the development of San Diego County's first BHSA Integrated Plan for Fiscal Years 2026–2029.

Participate in Upcoming Activities

View upcoming and past engagement activities hosted by the department, including community workshops, town halls, and input opportunities to help inform the BHSA Integrated Plan for Fiscal Years 2026–2029.

- Broadens scope of behavioral health funding to include standalone substance use disorder treatment services, housing interventions, and bolsters oversight and transparency
- Mandates data-driven reporting and more rigorous population-level outcome tracking – much more rigorous than MHSA
 - Behavioral Health Outcomes, Accountability, and Transparency Report **NEW**
- Mandates stronger stakeholder engagement
- Emphasis on supporting high-need and at-risk populations, evidence-based and community-defined practices, the behavioral health workforce, and health equity

Key BHSA Populations



LIVE WELL
SAN DIEGO

Eligible adults/older adults who are:

- Chronically homeless or experiencing homelessness or are at risk of homelessness.
- In, or are at risk of being in, the justice system.
- Reentering the community from prison or jail.
- At risk of conservatorship.
- At risk of institutionalization.

Eligible children and youth who are:

- Chronically homeless or experiencing homelessness or are at risk of homelessness.
- In, or are at risk of being in, the juvenile justice system.
- Reentering the community from a youth correctional facility.
- In the child welfare system.
- At risk of institutionalization.

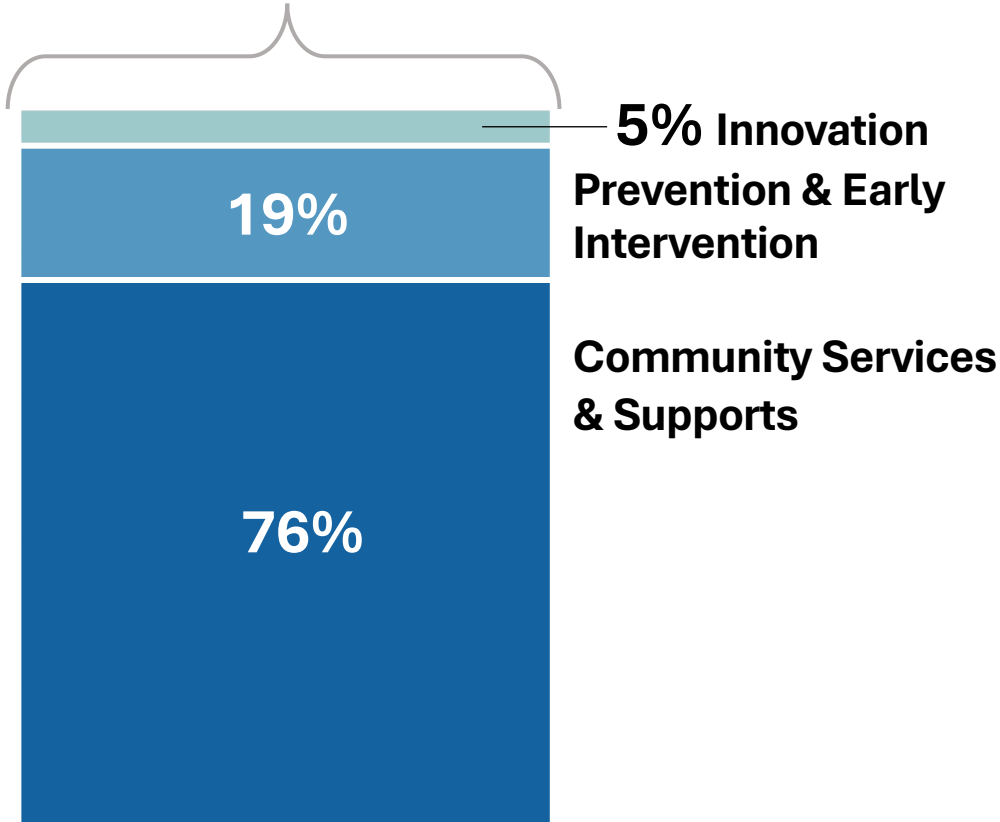


BHSA Components



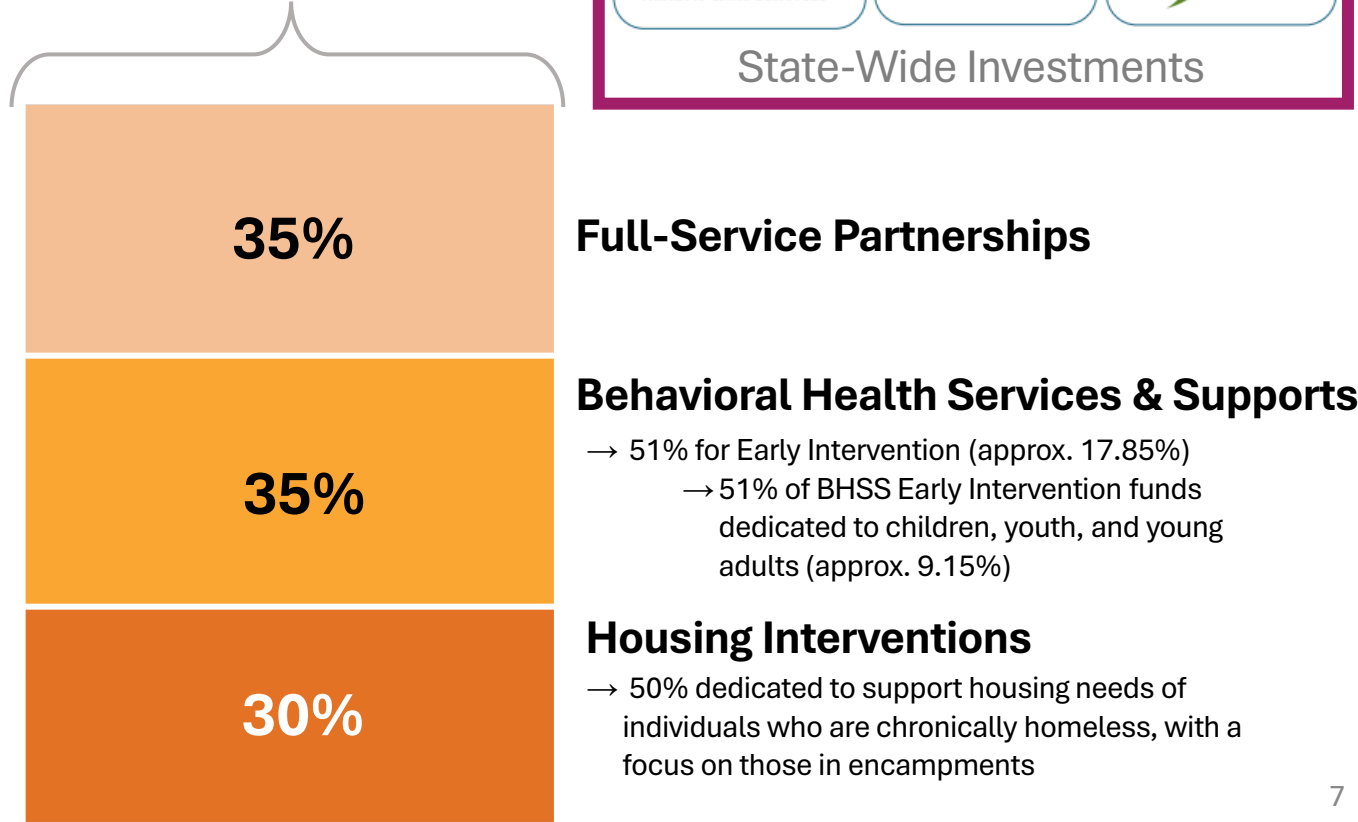
County Allocation of MHSA Dollars (Before Prop 1)

95% County Allocation
5% State



County Allocation of Proposed BHSA Dollars (Under Prop 1)

90% County Allocation
10% State



BHSA Components



- **Full Service Partnerships (FSPs)** – provides team-based support for people with serious behavioral health needs using a “whatever it takes” approach. Services focus on the whole person, offering help that’s recovery-focused, age-appropriate, and delivered in partnership with families and natural supports.
- **Behavioral Health Services and Supports (BHSS)** – includes treatment and recovery supports that help people of all ages access behavioral health care—like therapy, case management, medication support, and other services that promote wellness and recovery.
- **Housing Interventions** – focuses on helping people with behavioral health needs find and keep stable housing through supports like rental assistance, housing navigation, and ongoing services.

BHSS

- *Children’s, Adult, and Older Adult Systems of Care*
- *Outreach & Engagement*
- *Workforce Education and Training*
- *Capital Facilities and Technological Needs*
- *Early Intervention Programs*
- *Innovative Behavioral Health Pilots and Projects*

BHSA Integrated Plan (IP)



LIVE WELL
SAN DIEGO

**Counties' first BHSA Integrated Plan will cover
Fiscal Years 2026-2029 and be due to DHCS by June 30, 2026.**

All counties given template by state to provide:

- County Demographics and Behavioral Health Needs
- Plan Goals and Objectives
- **Community Planning Process (CPP)**
- Comment Period and Public Hearing
- County Behavioral Health Care Continuum Capacity
- Services by Total Funding Source
- Behavioral Health Services Fund Programs
- Workforce Strategy
- Budget and Prudent Reserve




**Section 3
County
Integrated
Plan**



<https://policy-manual.mes.dhcs.ca.gov/behavioral-health-services-act-county-policy-manual/V1.0.0/3-county-integrated-plan>

BHSA: CPP Timeline



Phase 1 Receive New State Guidance for Planning	 Phase 2 Conduct Community Education & Engagement	Phase 3 Develop IP (Fiscal Years 2026-2029)	Phase 4 Review & Approve IP	Phase 5 Submit IP to State
Summer 2025-Fall 2025	Fall 2025-Winter 2026	Winter 2026-Spring 2026	Spring 2026-Summer 2026	By June 30, 2026
<ul style="list-style-type: none"> • Review BHSA County Policy Manual (finalized June 2025) and evaluate new requirements for counties from the California Department of Health Care Services (DHCS). • Attend DHCS webinars for counties on Integrated Plan (IP) development and the Community Planning Process (CPP) to structure BHSA CPP engagement activities. 	<ul style="list-style-type: none"> • Provide BHSA education through informational handouts and presentations at public meetings. • Facilitate outreach, listening sessions, focus groups, and other opportunities at community events and convenings for stakeholders to provide input. • Document key learnings and stakeholder recommendations to support community priorities and system needs. 	<ul style="list-style-type: none"> • Department synthesis of stakeholder input, fiscal data, and program assessments. • Draft San Diego County's IP for Fiscal Years 2026–2029. 	<ul style="list-style-type: none"> • Post IP draft for public comment and feedback. • Present proposed IP to the San Diego County Board of Supervisors (Board). • Incorporate public comments and finalize IP language. 	<ul style="list-style-type: none"> • Board-approved IP provided to State (DHCS) through their BHSA County Portal. • Prepare for official implementation of BHSA funding and reporting requirements on July 1, 2026.

BHSA: CPP - What is our county doing?



LIVE WELL
SAN DIEGO

- BHS is conducting engagement and education activities thru various mechanisms
 - Activities include listening sessions, focus groups, interviews, tabling exchanges at outreach events, as well as informational BHSA workshops
- Input opportunities during this baseline year for BHSA are focused on understanding stakeholder insights and recommendations related to the following key topics which are new components and/or have heightened focus under BHSA:
 - Substance use disorder (SUD) services
 - Housing interventions, particularly to support those at risk of or experiencing homelessness
 - Crisis response services
 - Early intervention for youth and young adults

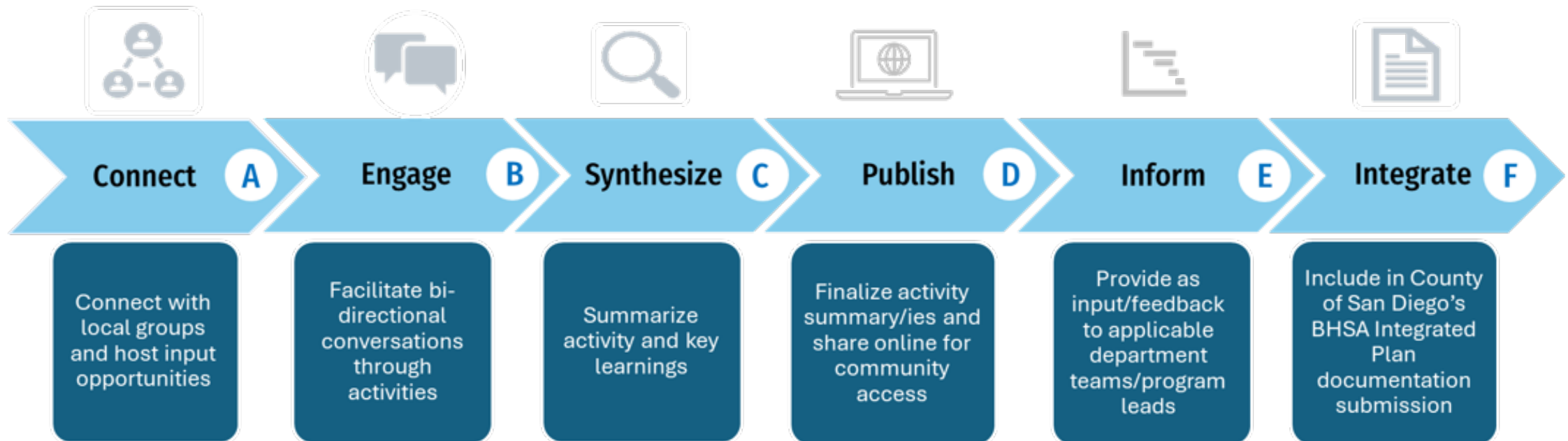
Stakeholder Input



LIVE WELL
SAN DIEGO

How is info from CPP input sessions being utilized by the department?

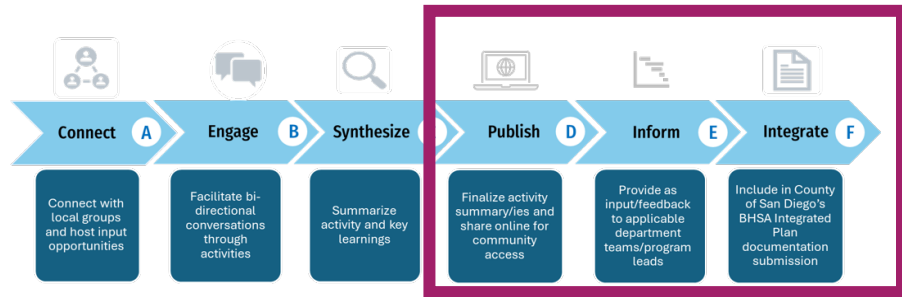
Input will inform specialty mental health and substance use disorder treatment services priorities, investments, and recommendations included in the first BHSA Integrated Plan scheduled for presentation to the San Diego County Board of Supervisors in Summer 2026.



Activity Summaries



LIVE WELL
SAN DIEGO



County of San Diego Health and Human Services Agency - Behavioral Health Services

BHS Housing Council Input Session Engagement Summary

Overview: This report summarizes the Thursday, May 1, 2025, input session between the County of San Diego Housing Council, Behavioral Health Services (BHS), housing stakeholders, and community members, examining how the Behavioral Health Services Act (BHSA) will shape housing policies.

Section	Details
Engagement Title	Housing Council Listening Session
Format	<input checked="" type="checkbox"/> In-Person <input type="checkbox"/> Virtual <input type="checkbox"/> Hybrid
Date	Thursday, May 1, 2025
Time	10:30 AM-11:30 AM
Location	County of San Diego Housing and Community Development Services (HCDS), 3899 Bollen Rd, San Diego, CA, 92123
Activity Details	60-min discussion: <ul style="list-style-type: none"> Nearly 40 attendees 4 discussion questions 200+ comments received: <ul style="list-style-type: none"> 153 comments submitted through Mentimeter 40 comments through open discussion
Participation	

Summary of Engagement Activity

On May 1, 2025, the County of San Diego Behavioral Health Services (BHS), in collaboration with the University of California, San Diego (UCSD) Health Partnership, hosted a listening session during the BHS Housing Council Retreat at the San Diego County Housing and Community Development Services (HCDS) building. The Housing Council provides guidance on the design, implementation, and evaluation of housing interventions to address the behavioral health needs of individuals at risk of or experiencing homelessness or housing insecurity. This session was designed to gather early input to inform the development of the County's first Behavioral Health Services Act (BHSA) Integrated Plan and input session questions were formulated based on prior input and work of the Council, including the 2022-2027 Strategic Housing Plan.

Approximately 40 participants attended the retreat, including the Council's 10 voting members and representatives from community-based organizations, housing developers, advocacy groups, and government and non-government agencies.

Participating organizations included:

- National CORE
- Alpha Project
- Vista Hill
- Corporation for Supportive Housing (CSH)
- Legal Aid Society
- Jewish Family Services of San Diego
- Mobile Crisis Response Team (MCRT) Exodus Recovery
- San Diego Housing Commission (SDHC)
- Clarenda
- Wakeland Housing and Development Corporation
- Housing Innovation Partners (HIP)

10/09/2025 1

Key Learnings

- Rigid Policies Create Barriers to Stable and Accessible Housing**
Barriers include eligibility rules, funding limits, and a mismatch of services when complex health needs exist. Eligibility rules like Coordinated Entry Systems (CES) matching, Housing and Urban Development restrictions, and felony exclusions all prevent access. Funding limits further narrow eligibility: for example, Supplemental Security Insurance (SSI) excludes board and care for high-need individuals. Service mismatch makes housing waits too long for clients with specialized care needs that require access to Assertive Community Treatment (ACT), and Full-Service Partnership (FSP).

Audience Recommendations

- Dedicate Funding for Capital Development**
Participants recommended the County dedicate the full 25% allowable under the BHSA 30% Housing Intervention Component to capital development projects. Maximizing this investment would be essential to expand the supply of Permanent Supportive Housing (PSH) and meet needs of individuals with serious behavioral health conditions at risk or experiencing homelessness. Recapitalization of "No Place Like Home," in collaboration with County Housing and Development Services was also suggested.

- Activity Summaries approved by BHAB on 09/04/25
- Overview of activity, participants, discussion(s) held, including questions proctored
- Three primary uses once finalized

Where Can I Find Updates?



LIVE WELL
SAN DIEGO

Visit our BHSa website!



SCAN ME

bit.ly/BHSA_BHS

**Behavioral Health Services Act
Online Input Form**

SAN DIEGO COUNTY, CALIFORNIA

The County of San Diego's Behavioral Health Services Department invites you to share your ideas and recommendations for behavioral health programs and services as California counties prepare to implement the Behavioral Health Services Act on July 1, 2026.

The Behavioral Health Services Act (BHSA) modernizes the Mental Health Services Act (MHSA) and is a key component of the 2025-2029 Integrated Plan for Fiscal Years 2026-2029.

Behavioral Health Services

GET HELP NOW I WANT TO FIND ▼ MENTAL HEALTH ▼ SUBSTANCE USE ▼ CONNECT ▼

Community Planning

BHSA requires counties to look at their whole behavioral health system of care through a formal Community Planning Process (CPP). The CPP supports the County of San Diego's goal to involve communities in meaningful conversations and decision-making about local behavioral health services to ensure programs reflect their unique needs and voices.

Share Input via Our Online Form

Access this online form to share insights and recommendations with BHS to help guide the development of San Diego County's first BHSA Integrated Plan for Fiscal Years 2026-2029.

Participate in Upcoming Activities

View upcoming and past engagement activities hosted by the department, including community workshops, town halls, and input opportunities to help inform the BHSA Integrated Plan for Fiscal Years 2026-2029.

What about BHSA would you like to provide input on?

Select from the list below to populate response boxes:

- ☐ Behavioral Health Services and Supports (BHSS) component
- ☐ BHSS: Workforce Education and Training
- ☐ BHSS: Early Intervention
- ☐ Full Service Partnerships (FSP) component
- ☐ Substance Use Disorder (SUD) Services
- ☐ Housing Interventions component
- ☐ Communities Most Impacted
- ☐ Other

About You

Please share a little about yourself to help us understand who we heard from.

Which of the following best describes you and/or the agency or organization you represent? *

(Mark all that apply)

- ☐ Adult or older adult with lived mental health or substance use experience
- ☐ Youth or young adult with lived mental health or substance use experience
- ☐ Family member of someone with lived mental health or substance use experience
- ☐ Mental health, substance use, or social services provider
- ☐ Public or government agency

Thank You!



LIVE WELL
SAN DIEGO