

# **Transforming Behavioral Health Together: Proposition 1 & San Diego County's 2026–2029 Behavioral Health Services Act Integrated Plan**

Thursday, October 30<sup>th</sup>, 2025 | 11:00 AM – 12:30 PM

## **Agenda**

- Land Acknowledgement
- Welcome & Background
  - Proposition 1/BHSA Background
  - Session Activity Overview
- Input Session
- Wrap-up & Next Steps

---

**Stay Connected:** Have more thoughts after today? You can share input or ideas anytime. For ongoing updates, information, Frequently Asked Questions, and engagement materials, visit our website or reach out via email.

**BHSA Website:** [bit.ly/BHSA\\_BHS](https://bit.ly/BHSA_BHS)

**Email:** [BHSEngage.HHSA@sdcounty.ca.gov](mailto:BHSEngage.HHSA@sdcounty.ca.gov)







## Behavioral Health Services Act (BHSA): Community Planning Process Overview

California is updating how it funds and delivers behavioral health services through new State laws known as the Behavioral Health Services Act (BHSA) and the Behavioral Health Bond Act (approved by voters in 2024 via passage of Proposition 1). Together, these efforts—called the State’s *Behavioral Health Transformation*—aim to improve access, accountability, and equity in care statewide.

BHSA replaces the former legislation, Mental Health Services Act (MHSA), and will take full effect on July 1, 2026. While BHSA does not introduce new funds, it changes how counties may use their allocations. Oversight for prevention and workforce development will shift from local counties to the State. The law also updates funding categories and adds new areas of focus, including:

- Substance use disorder (SUD) services
- Housing interventions
- Crisis response services
- Early intervention for youth and young adults

The County of San Diego Behavioral Health Services (BHS) Department is preparing for this transition by assessing programs, strengthening partnerships, and continuing its commitment to community engagement through the Community Planning Process (CPP). CPP input activities during this baseline year for BHSA are focused on understanding stakeholder insights and recommendations related to key topics and/or populations with heightened focus under BHSA.

### What is the County Doing for CPP?

CPP activities are how BHS gathers input from community members, providers, and other stakeholders to help guide programming and system improvement efforts. Under BHSA, the CPP will continue to serve as the foundation for public engagement to ensure the community’s voice remains central to local behavioral health planning.

BHS is conducting education and engagement activities across the county to inform development of the region’s first BHSA Integrated Plan (IP) for Fiscal Years 2026–2029. Activities include listening sessions, focus groups, interviews, tabling exchanges at outreach events, as well as informational workshops to learn about BHSA. Input collected through activities will be used to help determine local priorities, identify opportunities for system improvement, and strengthen alignment with new BHSA components.

## BHSA CPP Timeline

Phase	Timeline	Key Activities
<b>Phase 1:</b> Receive New State Guidance for Planning	Summer-Fall 2025	<ul style="list-style-type: none"> <li>Review BHSA County Policy Manual (finalized June 2025) and evaluate new requirements for counties from the California Department of Health Care Services (DHCS).</li> <li>Attend DHCS webinars for counties on Integrated Plan (IP) development and the Community Planning Process (CPP) to structure BHSA CPP engagement activities.</li> </ul>
<b>Phase 2:</b> Conduct Community Education & Engagement	Fall 2025-Winter 2026	<ul style="list-style-type: none"> <li>Provide BHSA education through informational handouts and presentations at public meetings.</li> <li>Facilitate outreach, listening sessions, focus groups, and other opportunities at community events and convenings for stakeholders to provide input.</li> <li>Document key learnings and stakeholder recommendations to support community priorities and system needs.</li> </ul>
<b>Phase 3:</b> Develop Draft IP	Winter-Spring 2026	<ul style="list-style-type: none"> <li>Department synthesis of stakeholder input, fiscal data, and program assessments.</li> <li>Draft San Diego County's IP for Fiscal Years 2026–2029.</li> </ul>
<b>Phase 4:</b> Review & Approve IP	Spring-Summer 2026	<ul style="list-style-type: none"> <li>Post IP draft for public comment and feedback.</li> <li>Present proposed IP to the San Diego County Board of Supervisors (Board).</li> <li>Incorporate public comments and finalize plan language.</li> </ul>
<b>Phase 5:</b> Submit IP to State	By June 30, 2026	<ul style="list-style-type: none"> <li>Board-approved IP provided to State (DHCS) through their BHSA County Portal.</li> <li>Prepare for official implementation of BHSA funding and reporting requirements on July 1, 2026.</li> </ul>

## How Can You Get Involved?

The success of San Diego County's transition to BHSA depends on active community involvement. There are several ways for community members, providers, and partners to share their input and stay engaged:

- **Participate in Community Input Activities:** Join an upcoming listening session (offered both virtually and in-person).
- **Submit Feedback Online:** Share your ideas or questions using BHS' BHSA Online Input Form, accessible via the County's BHSA webpage.

All feedback will help shape the County's first BHSA Integrated Plan for Fiscal Years 2026–2029. BHS will continue to share updates and progress through public meetings, web postings, and partner networks.

## Stay Connected

Have more thoughts after today? You can share input or ideas anytime. For ongoing updates, information, Frequently Asked Questions, and engagement materials, visit our website or reach out via email.

**BHSA Website:** [bit.ly/BHSA\\_BHS](https://bit.ly/BHSA_BHS)  
**Email:** [BHSEngage.HHSA@sdcounty.ca.gov](mailto:BHSEngage.HHSA@sdcounty.ca.gov)

**Scan for More Info on BHSA**



## Help us Better Understand Behavioral Health Service Needs in San Diego County:

1. **Early Intervention:** How can we help more people learn about and access support early—before challenges become crises?

---

---

---

---

2. **Support & Connection:** What early intervention services would help older adults and people with disabilities access or stay connected to specialty behavioral health care?

---

---

---

---

3. **Accessibility:** What would “navigational support,” look like for an older adult or individual living with a disability seeking behavioral health support?

---

---

---

---

---

4. **Additional:** Anything else you would like us to know as we create the integrated plan (IP)?

---

---

---

---

---

## Help us Better Understand Behavioral Health Service Needs in San Diego County:

**4. ABOUT YOU:** Which of the following best describes you and/or the organization you represent? **(Mark all):**

- ☐ Adult or older adult with lived mental health or substance use experience
  - ☐ Youth or young adult with lived mental health or substance use experience
  - ☐ Family member of someone with lived mental health or substance use experience
  - ☐ Providers of mental health services and SUD treatment services
  - ☐ Public or government agency
  - ☐ Community, faith, or cultural organization
  - ☐ Homeless community & service providers
  - ☐ Public safety, housing, or emergency services
  - ☐ Education partner (early childhood, K-12, higher education)
  - ☐ Veteran or military-affiliated individual or organization
  - ☐ Healthcare or health plan provider
  - ☐ Labor representative organizations
  - ☐ Tribal and Indian Health Program designees
  - ☐ Area agencies on aging
  - ☐ Independent living centers
  - ☐ Member of LGBTQIA+ communities
  - ☐ Victims of domestic violence and sexual abuse
  - ☐ Youth/Adult/Providers from historically marginalized or culturally/linguistically diverse communities
- 

**5. ZIP CODE:** Please share your home zip code (optional): \_\_\_\_\_

*The information you have provided today will be used to help inform San Diego County's Behavioral Health Services Act Integrated Plan. For more information, visit [bit.ly/BHSA\\_BHS](https://bit.ly/BHSA_BHS).*

**Questions?** [Engage.BHS@sdcounty.ca.gov](mailto:Engage.BHS@sdcounty.ca.gov)



LIVE WELL  
SAN DIEGO

# **Transforming Behavioral Health Together: Proposition 1**

## **San Diego County's 2026–2029 Behavioral Health Services Act (BHSA) Integrated Plan (IP)**

***Caregiver Coalition Meeting***

***Thursday, October 30<sup>th</sup>, 2025***

**BHS Communication & Engagement (C&E) Unit**

***Daniel Romero, MA, Community Engagement Manager***

# Land Acknowledgment



“

We acknowledge that the San Diego County region is made up of the traditional lands of the Kumeyaay, Luiseño/Payómkaichum, Cahuilla and Cupeño/Kuupangaxwichem Peoples.

We acknowledge the harmony that existed among the land, nature, and its original Peoples, who have since endured displacement, persecution, and systemic oppression.

We pay our respect to the unceded territory and homelands of the 18 federally recognized tribes in our region.

We honor the ancestral grounds and sovereignty of the Tribal Nations, whose resilience and strength inspire forward movement towards more equitable and sustainable programs, policies, and practices.

”





# Today's Session



LIVE WELL  
SAN DIEGO

- **Welcome & Background**
  - Proposition 1/BHSA Background
  - Session Activity Instructions
- **Input Session/Mentimeter**
- **Wrap-up & Next Steps**



# About BHSA



- Proposition 1; takes effect July 1, 2026
- Modernizes the Mental Health Services Act (MHSA) passed by CA voters in 2004
- No additional funding introduced, but brings new components, requirements, and restrictions for how revenue derived from millionaire's tax may be used by counties for behavioral health programs/services

**Learn More**

[bit.ly/BHSA\\_BHS](https://bit.ly/BHSA_BHS)



SanDiegoCounty.gov Home

## Behavioral Health Services

GET HELP NOW I WANT TO FIND MENTAL HEALTH SUBSTANCE USE

### Behavioral Health Services Act

The Behavioral Health Services Act, also known as BHSA, is a state law passed by voters in March 2024. BHSA updates the [Mental Health Services Act \(MHSA\)](#) by:

- Expanding service access to include treatment for people with substance use disorders,
- Prioritizing care for people with the most serious mental illness,
- Providing ongoing resources for housing and workforce development, and
- Continuing investments in prevention, early intervention, and innovative behavioral health pilot programs.

BHSA aims to close service gaps and ensure equitable access to quality care across the state. New BHSA requirements will also enhance oversight, transparency, and accountability at the state and local levels.

To learn more about BHSA:

- [Behavioral Health Transformation \(DHCS\)](#)

To receive updates about BHSA, subscribe to these statewide sites:

- [Department of Health Care Services \(DHCS\)](#)
- [California Department of Public Health \(CDPH\)](#)

### Community Planning

BHSA requires counties to look at their whole behavioral health system of care through a formal Community Planning Process (CPP). The CPP supports the County of San Diego's goal to involve communities in meaningful conversations and decision-making about local behavioral health services to ensure programs reflect their unique needs and voices.

#### Share Input via Our Online Form

Access this online form to share insights and recommendations with BHS to help guide the development of San Diego County's first BHSA Integrated Plan for Fiscal Years 2026–2029.

#### Participate in Upcoming Activities

View upcoming and past engagement activities hosted by the department, including community workshops, town halls, and input opportunities to help inform the BHSA Integrated Plan for Fiscal Years 2026–2029.

- Broadens scope of behavioral health funding to include standalone substance use disorder treatment services, housing interventions, and bolsters oversight and transparency
- Mandates data-driven reporting and more rigorous population-level outcome tracking – much more rigorous than MHSA
  - Behavioral Health Outcomes, Accountability, and Transparency Report **NEW**
- Mandates stronger stakeholder engagement
- Emphasis on supporting high-need and at-risk populations, evidence-based and community-defined practices, the behavioral health workforce, and health equity

# Key BHSA Populations



LIVE WELL  
SAN DIEGO

## Eligible adults/older adults who are:

- Chronically homeless or experiencing homelessness or are at risk of homelessness.
- In, or are at risk of being in, the justice system.
- Reentering the community from prison or jail.
- At risk of conservatorship.
- At risk of institutionalization.

## Eligible children and youth who are:

- Chronically homeless or experiencing homelessness or are at risk of homelessness.
- In, or are at risk of being in, the juvenile justice system.
- Reentering the community from a youth correctional facility.
- In the child welfare system.
- At risk of institutionalization.

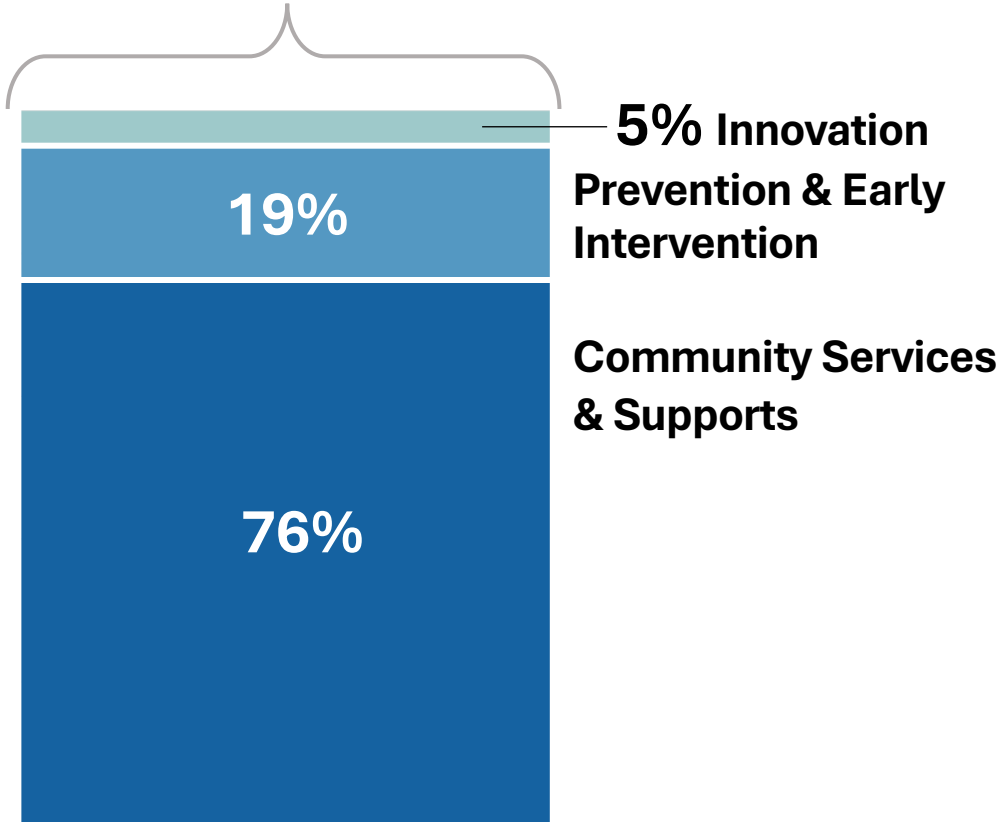


# BHSA Components



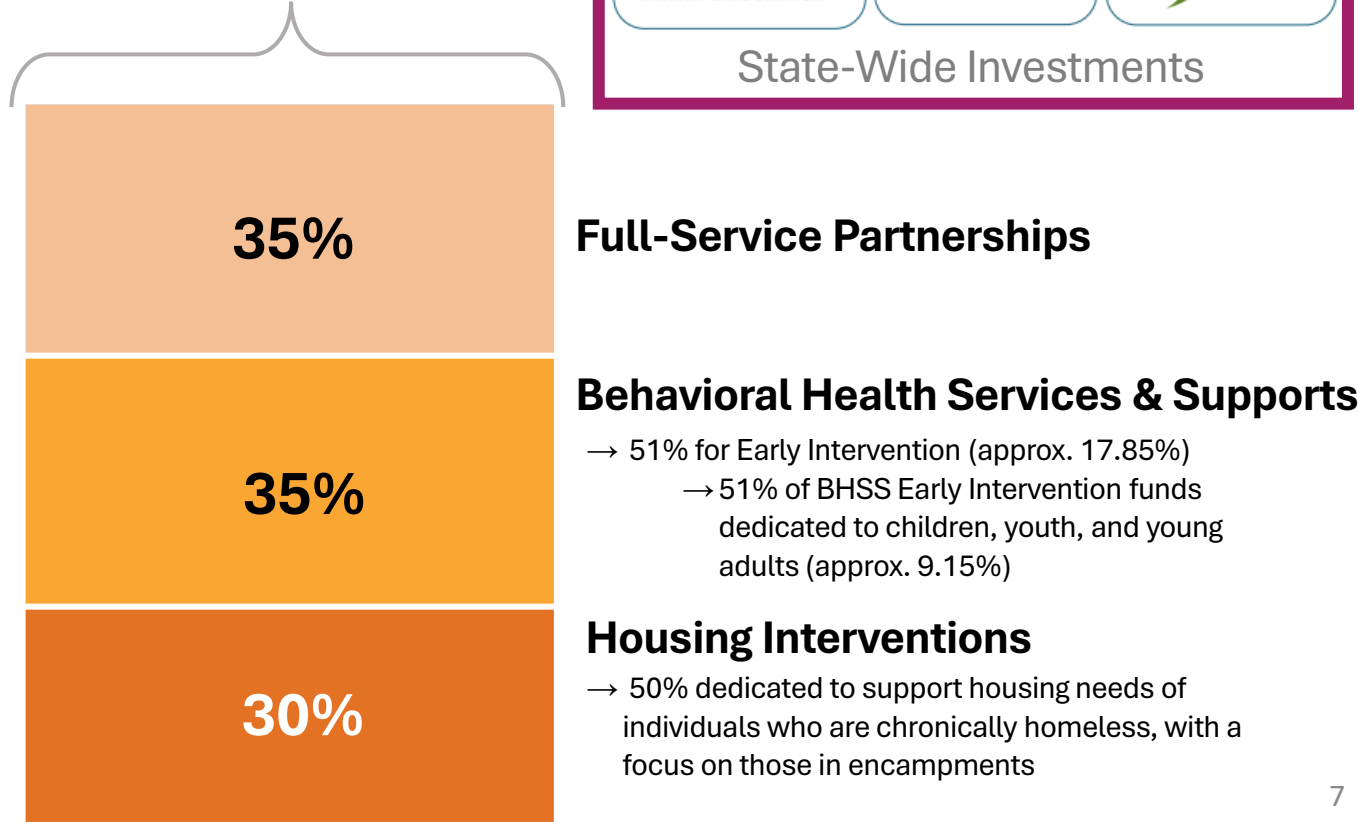
## County Allocation of MHSA Dollars (Before Prop 1)

95% County Allocation  
5% State



## County Allocation of Proposed BHSA Dollars (Under Prop 1)

90% County Allocation  
10% State





# BHSA Components



- **Full Service Partnerships (FSPs)** – provides team-based support for people with serious behavioral health needs using a “whatever it takes” approach. Services focus on the whole person, offering help that’s recovery-focused, age-appropriate, and delivered in partnership with families and natural supports.
- **Behavioral Health Services and Supports (BHSS)** – includes treatment and recovery supports that help people of all ages access behavioral health care—like therapy, case management, medication support, and other services that promote wellness and recovery.
- **Housing Interventions** – focuses on helping people with behavioral health needs find and keep stable housing through supports like rental assistance, housing navigation, and ongoing services.

## **BHSS**

- *Children’s, Adult, and Older Adult Systems of Care*
- *Outreach & Engagement*
- *Workforce Education and Training*
- *Capital Facilities and Technological Needs*
- *Early Intervention Programs*
- *Innovative Behavioral Health Pilots and Projects*

# BHSA Integrated Plan (IP)



LIVE WELL  
SAN DIEGO

**Counties' first BHSA Integrated Plan will cover  
Fiscal Years 2026-2029 and be due to DHCS by June 30, 2026.**

## **All counties given template by state to provide:**

- County Demographics and Behavioral Health Needs
- Plan Goals and Objectives
- **Community Planning Process (CPP)**
- Comment Period and Public Hearing
- County Behavioral Health Care Continuum Capacity
- Services by Total Funding Source
- Behavioral Health Services Fund Programs
- Workforce Strategy
- Budget and Prudent Reserve




**Section 3  
County  
Integrated  
Plan**



<https://policy-manual.mes.dhcs.ca.gov/behavioral-health-services-act-county-policy-manual/V1.0.0/3-county-integrated-plan>

# BHSA: CPP Timeline



<b>Phase 1</b> Receive New State Guidance for Planning	 <b>Phase 2</b> <b>Conduct Community Education &amp; Engagement</b>	<b>Phase 3</b> Develop IP (Fiscal Years 2026-2029)	<b>Phase 4</b> Review & Approve IP	<b>Phase 5</b> Submit IP to State
<b>Summer 2025-Fall 2025</b>	<b>Fall 2025-Winter 2026</b>	<b>Winter 2026-Spring 2026</b>	<b>Spring 2026-Summer 2026</b>	<b>By June 30, 2026</b>
<ul style="list-style-type: none"> <li>• Review BHSA County Policy Manual (finalized June 2025) and evaluate new requirements for counties from the California Department of Health Care Services (DHCS).</li> <li>• Attend DHCS webinars for counties on Integrated Plan (IP) development and the Community Planning Process (CPP) to structure BHSA CPP engagement activities.</li> </ul>	<ul style="list-style-type: none"> <li>• Provide BHSA education through informational handouts and presentations at public meetings.</li> <li>• Facilitate outreach, listening sessions, focus groups, and other opportunities at community events and convenings for stakeholders to provide input.</li> <li>• Document key learnings and stakeholder recommendations to support community priorities and system needs.</li> </ul>	<ul style="list-style-type: none"> <li>• Department synthesis of stakeholder input, fiscal data, and program assessments.</li> <li>• Draft San Diego County's IP for Fiscal Years 2026–2029.</li> </ul>	<ul style="list-style-type: none"> <li>• Post IP draft for public comment and feedback.</li> <li>• Present proposed IP to the San Diego County Board of Supervisors (Board).</li> <li>• Incorporate public comments and finalize IP language.</li> </ul>	<ul style="list-style-type: none"> <li>• Board-approved IP provided to State (DHCS) through their BHSA County Portal.</li> <li>• Prepare for official implementation of BHSA funding and reporting requirements on July 1, 2026.</li> </ul>



# BHSA: CPP - What is our county doing?



- BHS is conducting engagement and education activities thru various mechanisms
  - Activities include listening sessions, focus groups, interviews, tabling exchanges at outreach events, as well as informational BHSA workshops
- Input opportunities during this baseline year for BHSA are focused on understanding stakeholder insights and recommendations related to the following key topics which are new components and/or have heightened focus under BHSA:
  - Substance use disorder (SUD) services
  - Housing interventions, particularly to support those at risk of or experiencing homelessness
  - Crisis response services
  - Early intervention for youth and young adults

# **Input Session Overview**

The bottom of the slide features three overlapping, wavy horizontal bands. The top band is a medium blue, the middle band is a lighter teal, and the bottom band is white. These bands create a sense of movement and depth at the base of the solid blue background.

## Questions:

1. How can we help more people learn about and access support early—before challenges become crises?
2. What early intervention services would help older adults and people with disabilities access or stay connected to specialty behavioral health care?
3. What would “navigational support,” look like for an older adult or individual living with a disability seeking behavioral health support?
4. Anything else you would like us to know as we create the integrated plan (IP)?

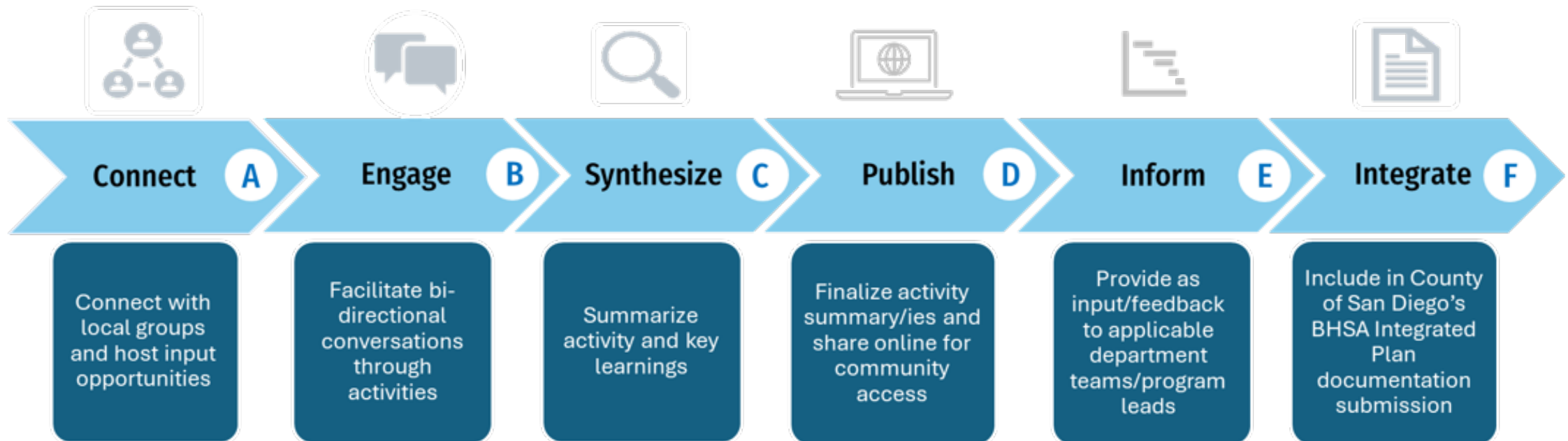
# Stakeholder Input



LIVE WELL  
SAN DIEGO

## How is info from CPP input sessions being utilized by the department?

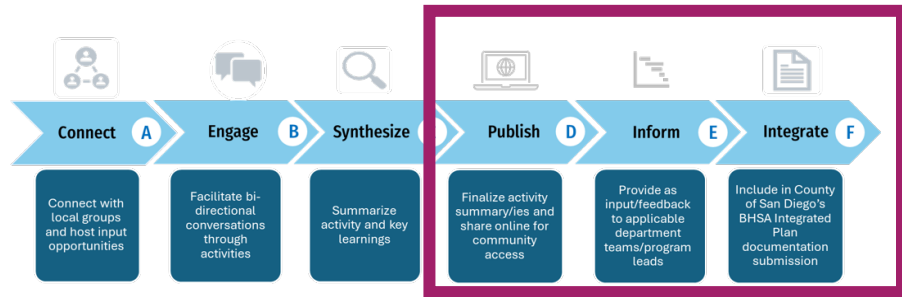
*Input will inform specialty mental health and substance use disorder treatment services priorities, investments, and recommendations included in the first BHSA Integrated Plan scheduled for presentation to the San Diego County Board of Supervisors in Summer 2026.*



# Activity Summaries



LIVE WELL  
SAN DIEGO



County of San Diego Health and Human Services Agency - Behavioral Health Services

**BHS Housing Council Input Session Engagement Summary**

Overview: This report summarizes the Thursday, May 1, 2025, input session between the County of San Diego Housing Council, Behavioral Health Services (BHS), housing stakeholders, and community members, examining how the Behavioral Health Services Act (BHSA) will shape housing policies.

Section	Details
Engagement Title	Housing Council Listening Session
Format	<input checked="" type="checkbox"/> In-Person <input type="checkbox"/> Virtual <input type="checkbox"/> Hybrid
Date	Thursday, May 1, 2025
Time	10:30 AM-11:30 AM
Location	County of San Diego Housing and Community Development Services (HCDS), 3899 Bollen Rd, San Diego, CA, 92123
Activity Details	60-min discussion: <ul style="list-style-type: none"> <li>Nearly 40 attendees</li> <li>4 discussion questions</li> <li>200+ comments received: <ul style="list-style-type: none"> <li>153 comments submitted through Mentimeter</li> <li>40 comments through open discussion</li> </ul> </li> </ul>
Participation	

**Summary of Engagement Activity**

On May 1, 2025, the County of San Diego Behavioral Health Services (BHS), in collaboration with the University of California, San Diego (UCSD) Health Partnership, hosted a listening session during the BHS Housing Council Retreat at the San Diego County Housing and Community Development Services (HCDS) building. The Housing Council provides guidance on the design, implementation, and evaluation of housing interventions to address the behavioral health needs of individuals at risk of or experiencing homelessness or housing insecurity. This session was designed to gather early input to inform the development of the County's first Behavioral Health Services Act (BHSA) Integrated Plan and input session questions were formulated based on prior input and work of the Council, including the 2022-2027 Strategic Housing Plan.

Approximately 40 participants attended the retreat, including the Council's 10 voting members and representatives from community-based organizations, housing developers, advocacy groups, and government and non-government agencies.

Participating organizations included:

- National CORE
- Alpha Project
- Vista Hill
- Corporation for Supportive Housing (CSH)
- Legal Aid Society
- Jewish Family Services of San Diego
- Mobile Crisis Response Team (MCRT) Exodus Recovery
- San Diego Housing Commission (SDHC)
- Clavdia
- Wakeland Housing and Development Corporation
- Housing Innovation Partners (HIP)

10/09/2025 1

## Key Learnings

- Rigid Policies Create Barriers to Stable and Accessible Housing**  
Barriers include eligibility rules, funding limits, and a mismatch of services when complex health needs exist. Eligibility rules like Coordinated Entry Systems (CES) matching, Housing and Urban Development restrictions, and felony exclusions all prevent access. Funding limits further narrow eligibility: for example, Supplemental Security Insurance (SSI) excludes board and care for high-need individuals. Service mismatch makes housing waits too long for clients with specialized care needs that require access to Assertive Community Treatment (ACT), and Full-Service Partnership (FSP).

## Audience Recommendations

- Dedicate Funding for Capital Development**  
Participants recommended the County dedicate the full 25% allowable under the BHSA 30% Housing Intervention Component to capital development projects. Maximizing this investment would be essential to expand the supply of Permanent Supportive Housing (PSH) and meet needs of individuals with serious behavioral health conditions at risk or experiencing homelessness. Recapitalization of "No Place Like Home," in collaboration with County Housing and Development Services was also suggested.

- Activity Summaries approved by BHAB on 09/04/25
- Overview of activity, participants, discussion(s) held, including questions proctored
- Three primary uses once finalized



bit.ly

***bit.ly/BHSA\_BHS***

## SAN DIEGO COUNTY, CALIFORNIA

The County of San Diego's Behavioral Health Services Department invites you to share your ideas and recommendations for behavioral health programs and services as California counties prepare to implement the Behavioral Health Services Act on July 1, 2026.

The Behavioral Health Services Act (BHSA) modernizes the Mental

ENHANCED BY Google

GET HELP NOW

I WANT TO FIND 

MENTAL HEALTH ▼

SUBSTANCE USE \

CONNECT ▼

BHSA requires counties to look at their whole behavioral health system of care through a formal Community Planning Process (CPP). The CPP supports the County of San Diego's goal to involve communities in meaningful conversations and decision-making about local behavioral health services to ensure programs reflect their unique needs and voices.

Access this online form to share insights and recommendations with BHS to help guide the development of San Diego County's first BHSA Integrated Plan for Fiscal Years 2026–2029.

View upcoming and past engagement activities hosted by the department, including community workshops, town halls, and input opportunities to help inform the BHSA Integrated Plan for Fiscal Years 2026–2029.

Select from the list below to populate response boxes:

- ## About You

Please share a little about yourself to help us understand who we heard from.

Which of the following best describes you and/or the agency or organization you represent? \*

(Mark all that apply)

- ☐ Adult or older adult with lived mental health or substance use experience
- ☐ Youth or young adult with lived mental health or substance use experience
- ☐ Family member of someone with lived mental health or substance use experience
- ☐ Mental health, substance use, or social services provider
- ☐ Public or government agency

# Stay Connected



LIVE WELL  
SAN DIEGO

## Upcoming Engagement Opportunities

## Planned Engagement Activities

## Past Activity Materials

SCAN ME



Contact Us

Communication & Engagement Unit: [Engage.BHS@sdcounty.ca.gov](mailto:Engage.BHS@sdcounty.ca.gov)

The screenshot displays the Behavioral Health Services website. The header includes the agency logo, navigation links (GET HELP NOW, I WANT TO FIND, MENTAL HEALTH, SUBSTANCE USE, CONNECT), and a search bar. The main content area is titled "Join Us for an Upcoming Activity" and features three event cards:

- Virtual Input Session:** Behavioral Health Advisory Board (BHAB) AOD Continuum of Care Subcommittee Input Session. Join us on Monday, October 13, 2025, from 3:00pm - 4:30pm.
- LIVE WELL ADVANCE CONFERENCE & SCHOOL SUMMIT:** Reflecting on 10 Years of Collective Impact. Connect with Behavioral Health Services (BHS) and thousands of other local partners at the 10th Annual Live Well Advance.
- Virtual Input Session:** Behavioral Health Advisory Board (BHAB) Re-Entry Support Subcommittee Input Session. Join us on Monday, October 27, 2025, from 3:30pm - 5:00pm for a virtual input session, co-

Below the event cards, there is a section titled "Activities" which states: "BHS is dedicated to conducting meaningful engagement dialogues with stakeholders. This includes capturing and sharing key learnings from recent activities. See recent efforts."

The document is titled "BHS Housing Council Input Session Engagement Summary". It provides an overview of the session held on Thursday, May 1, 2025, between the County of San Diego Housing Council, Behavioral Health Services (BHS), housing stakeholders, and community members, examining how the Behavioral Health Services Act (BHSA) will shape housing policies.

**Section Details:**

- Engagement Title:** Housing Council Listening Session
- Format:** In-Person ☐ Virtual ☐ Hybrid
- Date:** Thursday, May 1, 2025
- Time:** 10:30 AM-11:30 AM
- Location:** County of San Diego Housing and Community Development Services (HCDS), 3665 Ruffin Rd, San Diego, CA 92123
- Participation:**
  - 60 min discussion
  - Nearly 40 attendees
  - 4 discussion questions
  - 200+ comments received
  - 163 comments submitted through Mentimeter
  - 40 comments through open discussion

**Summary of Engagement Activity:**

On May 1, 2025, the County of San Diego Behavioral Health Services (BHS), in collaboration with the University of California, San Diego (UCSD) Health Partnership, hosted a listening session during the BHS Housing Council Retreat at the San Diego County Housing and Community Development Services (HCDS) building. The Housing Council provides guidance on the design, implementation, and evaluation of housing interventions to address the behavioral health needs of individuals at risk of or experiencing homelessness or housing insecurity. This session was designed to gather early input to inform the development of the County's first Behavioral Health Services Act (BHSA) Integrated Plan and input session questions were formulated based on prior input and work of the council, including the 2022-2027 Strategic Housing Plan.

Approximately 40 participants attended the retreat, including the Council's 10 voting members and representatives from community-based organizations, housing developers, advocacy groups, and government and non-government agencies.

**Participating organizations included:**

- National CCRC
- Alpha Project
- Vista H8
- Corporation for Supportive Housing (CSH)
- Legal Aid Society
- Jewish Family Services of San Diego
- Mobile Crisis Response Team (MCRT)/Exodus Recovery

**Key Findings:**

- Severable Housing:** Mismatch of services when complex and Entry Systems (CES) matching, many exclusions of pre-empt access, Supplemental Security Insurance (SSI), Service mismatch makes it difficult to get access to the Partnership (FSP).
- Employment:** Employment, not just short-term employment and peer support, is needed to support employment and peer support.
- Housing Exist:** There are in PSB communities, many included exploring more health services @ housing.
- Access More:** Participants expressed a desire to perhaps see wellness kiosks (similar to like in convenience stores), mobile resource hubs, lending platforms, and libraries as service hubs. These approaches were seen as essential for lowering barriers and reaching harder-to-engage populations.

The document includes a date stamp for September 2025 and a color-coded progress bar at the bottom.



# Thank You!



LIVE WELL  
SAN DIEGO