

Welcome to the Children, Youth and Families Council Meeting



THE MEETING WILL BE STARTING SHORTLY...

ALL ATTENDEES ARE MUTED UPON ENTRY

PLEASE RAISE YOUR HAND OR USE THE CHAT BOX TO REQUEST TO SPEAK, COUNCIL CO-CHAIRS WILL FACILITATE DISCUSSIONS

PLEASE MUTE YOUR AUDIO WHEN YOU ARE NOT SPEAKING

THE MEETING PACKET WAS EMAILED TO THE COUNCIL DISTRIBUTION LIST



HAPPY
VALENTINE'S
DAY





MEETING SUMMARY REVIEW

**DOES ANY COUNCIL MEMBER HAVE INPUT ON THE
MEETING SUMMARY AT THIS TIME?**

COUNCIL MEMBERS MAY:

1. Verbally provide input at this time, or
2. Enter input in the chat, or
3. Email input to Grisel.Ortega@sdcounty.ca.gov by COB today



BEHAVIORAL HEALTH ADVISORY BOARD (BHAB) COUNCIL SEAT



LIVE WELL
SAN DIEGO

Welcome

Joel San Juan

as BHAB

Alternate Representative

Thank You

Rebecca Hernandez

for serving as BHAB

Alternate Representative



Welcome

Stephanie Escobar

as First 5

Alternate Representative

Thank You

Dulce Cahue-Augilar

for serving as First 5

Alternate Representative





Welcome

Veronica Hernandez

Youth Representative

FAMILY SECTOR COUNCIL SEAT VACANCIES (STEN WALKER)



LIVE WELL
SAN DIEGO

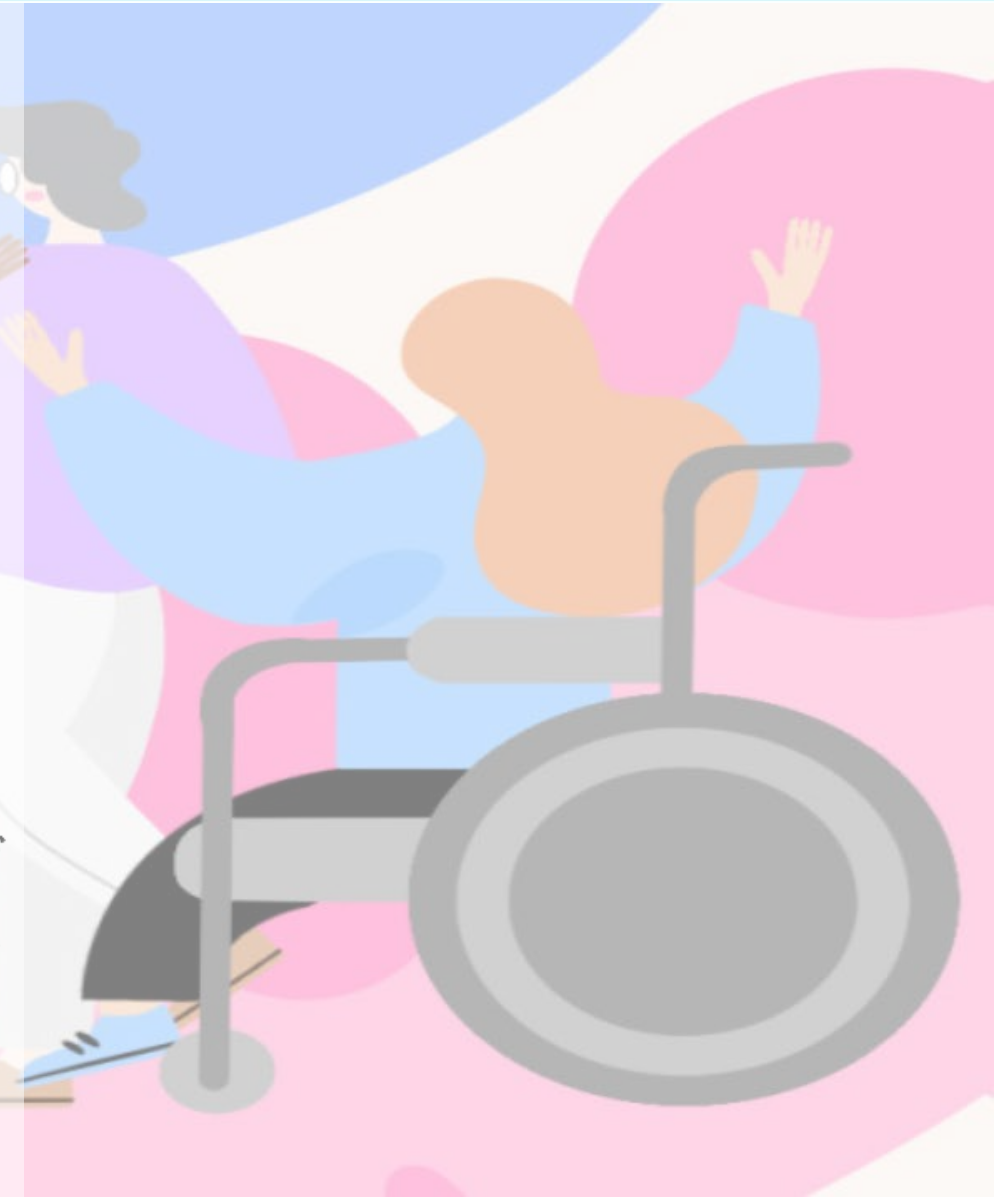
USE YOUR VOICE!

The County of San Diego Children, Youth and Families Behavioral Health System of Care Council is seeking out community members to share their lived experience to further increase equity in the behavioral health system in San Diego.

Currently seeking:

- A parent or caregiver to a youth who received Public Health System services
- Individuals (up to age 26) who received services from one of the following: **Special Education, Behavioral Health Services, Child Welfare Services, or Juvenile Justice Services**

To learn more please email cyfliaison@namisd.org.



Establish Peer Support Specialist Classification Adding Juneteenth as a County-observed Holiday



LIVE WELL
SAN DIEGO

DATE: January 25, 2022 and February 8, 2022

12

TO: Board of Supervisors

SUBJECT

AMENDMENTS TO THE COMPENSATION ORDINANCE AND ADMINISTRATIVE CODE (1/25/2022 – First Reading; 2/8/2022 – Second Reading) (DISTRICTS: ALL)

OVERVIEW

The proposed amendments to the San Diego County Compensation Ordinance are part of the ongoing efforts to manage and maintain a skilled, adaptable and diverse workforce dedicated to sustaining operational excellence and serving the public. This action amends the Compensation Ordinance by 1) establishing the Community Health Worker and Peer Support Specialist classifications in the Classified Service to support the Departments of Homeless Solutions and Equitable Communities and Behavioral Health Services respectively; and 2) amending Section 5.9.1 of the Compensation Ordinance, which adds Juneteenth as a County-observed holiday.



ITEM 19: RECEIVE REPORT ON THE SAN PASQUAL ACADEMY AND APPROVE ACTION ON SAN PASQUAL ACADEMY CAMPUS OPERATIONS

Nick Macchione, Agency Director, Health and Human Services Agency

Kimberly Giardina, DSW, Director, Child Welfare Services Health and Human Services Agency

January 25, 2022



LIVE WELL
SAN DIEGO

SUPPORTING A CONTINUUM OF CARE



LIVE WELL
SAN DIEGO

MULTIPURPOSE CAMPUS FOR FOSTER YOUTH POPULATION



Temporary Shelter
Care Facility



Resource Family
Homes



Short-Term
Residential
Therapeutic Program



Intensive Crisis
Programs



Transitional Housing
Program



Alumni Housing



San Pasqual Academy
Neighbors (SPAN) Program

PROPOSED INITIAL STAGE



LIVE WELL
SAN DIEGO



Group
Home
(Residential
Education
Program)



Resource
Family
Homes



San
Pasqual
Academy
Neighbors
(SPAN)
Program



Alumni
Housing

The capacity of the programs, services and supports are contingent on the procurement and licensing process and recruitment outcomes.



COUNTY OF SAN DIEGO

AGENDA ITEM

BOARD OF SUPERVISORS

NORA VARGAS
First District

JOEL ANDERSON
Second District

TERRA LAWSON-REMER
Third District

NATHAN FLETCHER
Fourth District

JIM DESMOND
Fifth District



LIVE WELL
SAN DIEGO

DATE: February 8, 2022

11

TO: Board of Supervisors

SUBJECT

**PRELIMINARY REPORT AND RECOMMENDATIONS ON DATA-DRIVEN
APPROACHES TO PUBLIC SAFETY, TREATMENT AND SERVICE EXPANSIONS,
AND ADVANCING EQUITY THROUGH ALTERNATIVES TO INCARCERATION
(DISTRICTS: ALL)**

First 5 Annual Report for 2020-2021 2.8.22 BL



LIVE WELL
SAN DIEGO



RECEIVE REIMAGINED GENERAL MANAGEMENT SYSTEM AND THE STRATEGIC PLAN AND ADOPT NEW COUNTY MISSION, VISION AND VALUES (DISTRICTS: ALL) 1.11.22 BL



LIVE WELL
SAN DIEGO

VISION

A just, sustainable, and
resilient future for all

MISSION

Strengthen our communities
with innovative, inclusive,
and data-driven services
through a skilled and
supported workforce

VALUES

Integrity, Equity, Access,
Belonging, Excellence and
Sustainability.

THE GENERAL MANAGEMENT SYSTEM REIMAGINED

The County has reimagined its
operational approach to planning
and decision making by integrating
the General Management System
(GMS) with the strategic framework
adopted by the Board of Supervisors.

It takes the GMS in a direction that is
reflective of today's communities
while preserving the core
management principles of strategic
planning, operational accountability,
enterprise-wide collaboration, and
employee connection.

At the core of the reimagined GMS is
Community Engagement, based on
the principle that all that we do
should be for, and created in
partnership with, the people we
serve. The outer ring is included to
reflect the core values of everything
we do: integrity, equity, access,
belonging, excellence and
sustainability.



COUNTY
OF
SAN DIEGO

VALUES

In recognition that "The noblest motive is the public good," we are dedicated to:

INTEGRITY

Earn the public's trust through honest and fair behavior, exhibiting the courage to do the right thing for the right reason, and dedicating ourselves to the highest standards of ethical conduct.

EQUITY

Apply an equity lens to appropriately design programs and services so that underserved communities have equitable opportunities. Using data driven metrics, lived experiences and the voices of our community we weave equity through all policies and programs.

ACCESS

Build trust with the residents we serve through transparent communication and neighborhood engagement that is accessible in the languages, facilities and methods that meet their needs.

BELONGING

Foster a sense of belonging, not just inclusion, for the people we serve and for the employees of the County who provide those services on a daily basis.

EXCELLENCE

Ensure exceptional service delivery to our customers by practicing fiscal prudence, encouraging innovation and leveraging best practices that promote continuous improvement to build strong, vibrant communities.

SUSTAINABILITY

Secure the future of our region, by placing sustainability at the forefront of our operations deeply embedded into our culture. Dedicate ourselves to meeting our residents' current resource needs without compromising our ability to meet the needs of generations to come.



County Adopted 2021-22 Operational Plan



LIVE WELL
SAN DIEGO

2021-22 Adopted Operational Plan

EXECUTIVE SUMMARY



Nora Vargas
Supervisor
District One

Joel Anderson
Supervisor
District Two

Terra Lawson-Remer
Supervisor
District Three

Nathan Fletcher
Supervisor
District Four

Jim Desmond
Supervisor
District Five

Governors' Proposed Budget for FY22-23



LIVE WELL
SAN DIEGO



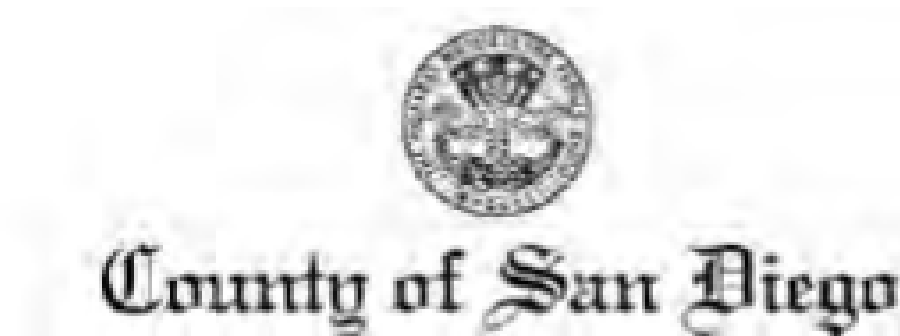
January 13, 2022

To: CBHDA Members
From: CBHDA Staff
Subject: Governor Newsom's FY 2022-23 January State Budget Proposal

BHS January Director's Report



LIVE WELL
SAN DIEGO



NICK MACCHIONE, FACHE
AGENCY DIRECTOR

HEALTH AND HUMAN SERVICES AGENCY
BEHAVIORAL HEALTH SERVICES
3255 CAMINO DEL RIO SOUTH, MAIL STOP P-531
SAN DIEGO, CA 92108-3806
(619) 563-2700 • FAX (619) 563-2705

LUKE BERGMANN, Ph.D.
DIRECTOR, BEHAVIORAL HEALTH SERVICES

January 27, 2022

TO: Behavioral Health Advisory Board (BHAB)

FROM: Luke Bergmann, Ph.D., Director, Behavioral Health Services

BEHAVIORAL HEALTH SERVICES (BHS) DIRECTOR'S REPORT – FEBRUARY 2022

ADVANCING EQUITY THROUGH POPULATION HEALTH INITIATIVES

Screening to Care Initiative



LIVE WELL
SAN DIEGO

Leveraging American Rescue Plan Act (ARPA) funding available through the San Diego County Health and Human Services Agency (HHSA), the County Behavioral Health Services Administration (BHS) will lead the Screening to Care Initiative in collaboration with County Office of Education (SDCOE) and County leadership. By implementing this initiative, the County seeks to make available small group behavioral health interventions on the school campus to all students in need, regardless of health insurance coverage. Expected outcomes resulting from the implementation of the Screening to Care Initiative, include:

- Reduce the need for crisis and acute care,
- Reduce disparities in behavioral health access,
- Reduce incidence of internalizing and externalizing behaviors,
- Increase accuracy in resource planning and future program development, and
- Improve mental health and social-emotional well-being indicators.



LIVE WELL
SAN DIEGO

New Youth Transition Campus Completed





LIVE WELL
SAN DIEGO

BRAIN XP INFO!



- Website: brainxp.org
- Instagram: @brainxpproject
- Twitter: @brainxpproject
- Facebook: @brainxpproject
- TikTok: @brainxpproject

81

WHAT IS DEPRESSION?

THE COMPLETE INFOGRAPHIC FOR TEENS

DEFINITION/LANGUAGE

- Definition: Feelings of severe despondency and dejection
- Language: Be considerate and thoughtful when using the word "depressed"



DEPRESSION SYMPTOMS



- Sadness, Crying, Isolation
- Feeling Hopeless, Lack of Motivation
- Inability to Focus

COPING SKILLS LIST



LIVE WELL
SAN DIEGO

INTERACTIVE SKILLS

- Be with People
- Help Others
- Play with a Pet
- Do Volunteer Work
- Participate in a Group Sport
- Talk to a Friend



EVERYDAY PRACTICES

- Get Enough Sleep
- Eat Healthy Foods
- Believe in Yourself
- Practice Gratitude





CHECK IN

LEARN MORE

GET SUPPORT

INTRODUCTION TO THE CAMPAIGN

As part of California's on-going mental health movement, the *Take Action for Mental Health* campaign is designed to help you **check in**, **learn more**, and **get support** for your own mental health or the mental health of someone you care about.

CHECK IN



about mental health



Get Resources

LEARN MORE



about mental health needs
and what you can do



Get Resources

GET SUPPORT



for yourself or someone
you care about



Get Resources

Mid Year Sector & Subcommittee Updates



Four Sectors	Council Sub-Committees and Other Relevant Groups	
	<u>Executive</u> (Co-Chairs and Sub-Committees Co-Chairs)	
<u>Public Sector</u> Presented 1.10.22 Yael Koenig & Dr. Laura Vleugels	<u>Early Childhood</u> Ginger Bial & Aisha Pope	<u>Health Plans</u> Presented 1.10.22 George Scolari
<u>Education Sector</u> Presented 1.10.22 Heather Nemour & Violeta Mora	<u>CADRE-CYF</u> Presented 1.10.22 Marisa Varond & Julie McPherson	<u>TAY Council</u> Presented 1.10.22 Mark Bartlett & Laura Tancredi-Baese
<u>Private Sector</u> Marisa Varond – ADSPA Cathryn Nacario - MHCA	<u>Training Academy</u> Rose Woods	<u>Outcomes</u> Eileen Quinn-O'Malley & Emily Trask
<u>Family/Youth Sector</u> Presented 1.10.22 Sten Walker	<u>Cultural Competency</u> Rosa Ana Lozada	<u>Fee For Service</u> Dr. Sherry Casper



CYF COUNCIL MEETING POLL QUESTION

1. On a scale of 1-5 (1 the lowest and 5 the highest), how would you rate the relevance and your interest with today's Council meeting? (Single Choice) *

- ☐ 1
- ☐ 2
- ☐ 3
- ☐ 4
- ☐ 5