

Date: May 11, 2020
CYF Memo: #19 - 19/20
To: CYF Mental Health Treatment Providers
From: Yael Koenig, CYF Deputy Director. Behavioral Health Services
Re: **CANS Annual Recertification**

On an annual basis, mental health treatment providers administering the Child and Adolescents Needs and Strengths (CANS) measure are required to get recertified. The second year for CANS implementation is coming to an end and some of the clinicians' CANS certification will be expiring in the next couple of months. Please allot time for your program clinicians to access the Praed Foundation on-line platform to obtain their CANS annual recertification. Programs may choose to work collectively as a group during the recertification process which has shown higher pass rates for Child Welfare Services (CWS) staff.

Please find attached two recertification resources with instructions on how to access, register and complete the annual recertification process via Praed Foundation's on-line platform:

- Microlearning Flyer – Navigating the CANS Assessment Certification Process
- User Guide for CANS Recertification

Additionally, RIHS is offering a CANS Overview Virtual Training. This training will provide an introduction to the CANS assessment, tactics on how to collectively rate CANS items, practice vignettes and concluding with attendees taking certification test in a group format. For information on how to register, please review attachment:

- CANS Overview Virtual Training Flyer

Providers can contact [Responsive Integrated Health Solutions \(RIHS\)](#) for any technical assistance with CANS recertification. The attached forms and other relevant outcomes training information can be found on the RIHS website.

If you have questions, please contact your Contracting Officer Representative (COR).

CC: County of San Diego Performance Improvement Team
County of San Diego Quality Management
County of San Diego Child Welfare Services
Child & Adolescent Services Research Center
Responsive Integrated Health Solutions
Optum Health

Microlearning—Navigating the CANS Assessment Certification Process

<https://theacademy.sdsu.edu/programs/rihs/cyf-outcomes/>

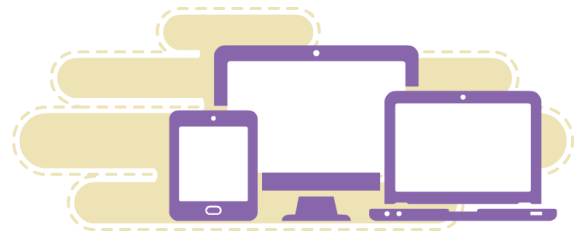
Course Description

This microlearning is designed to provide a high-level overview of the Child and Adolescent Needs and Strengths (CANS) assessment tool for BHS CYF Providers. Participants will receive a tutorial on navigating the certification/recertification process designated for County of San Diego Behavioral Health Services Children Youth and Families service providers which includes fee for service providers.

Training Link : [Click Here](#)

Audience

CYF-BHS counselors, case managers, therapists, supervisors,, and other direct service providers utilizing the CANS assessment including San Diego Optum contracted fee for service providers .



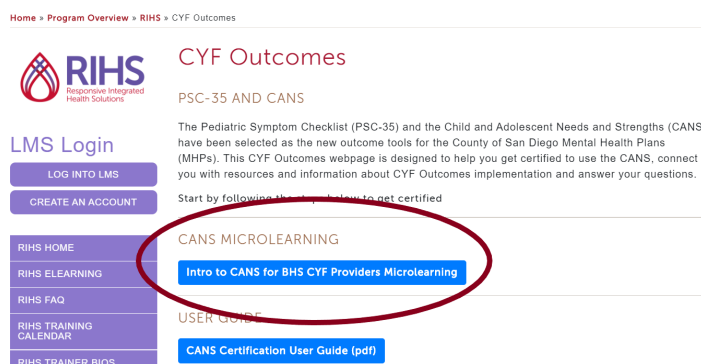
Training is Accessible 24/7 on the RIHS CYF Outcomes Website

Learning Objectives

Upon completion of this training participants will be able to:

- Define the CANS assessment tool
- Describe how the CANS assessment tool provides a framework for a shared vision among service providers and informs treatment planning for children, youth, and their families
- Outline the process to become CANS Certified and/or Recertified
- Demonstrate the ability to access the CANS Certification and/or Recertification site and complete the certification

[Click Here](#) to Complete Microlearning



The CANS certification process involves four steps that are completed on two different websites: the [RIHS website](#) and the [Praed Foundation](#) website.

If you have questions after reading this guide, please contact RIHS@sdsu.edu.

If you have difficulty with the Praed Foundation website, we at RIHS will do our best to resolve the problem for you. You can also contact the Praed Foundation team directly at support@TCOMtraining.com.

Step 1 Request Coupon

Request a coupon code to take the CANS eLearning and Certification Exam (free)

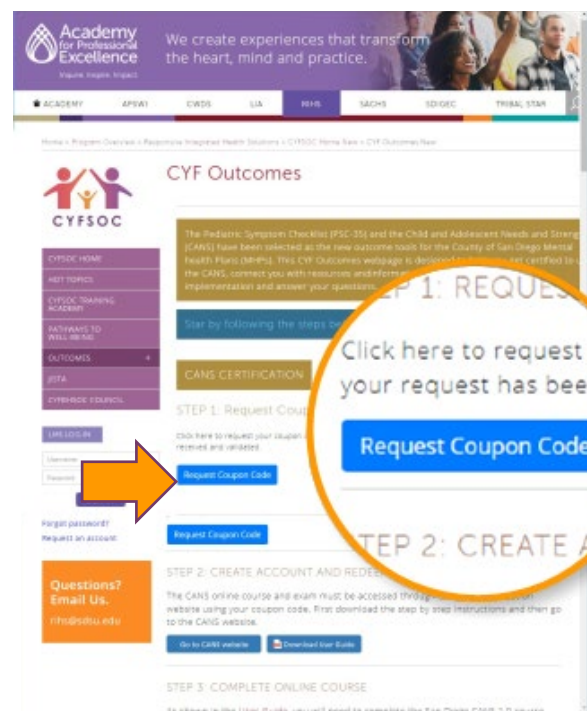
Visit the [RIHS CYF Outcomes](#) webpage on the RIHS website

Scroll down to Step 1 and click
Request Coupon Code

Complete **ALL** fields in the request form



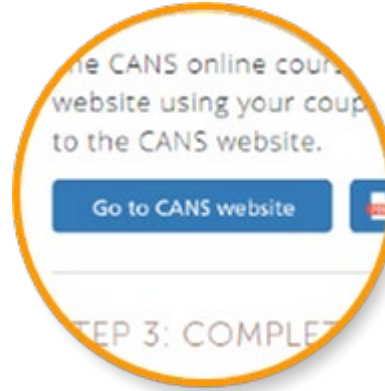
Use the same email address for **ALL** RIHS and Praed Foundation registrations



Step 2 Create Account and Redeem Coupon

From the RIHS CYF Outcomes website, scroll down to Step 2 and click [Go to CANS Website](#)

On this website, you will create your Praed Foundation account



Complete the registration form using the same email address you used for RIHS

A screenshot of a registration form. The form has the following fields: First Name, Last Name, Email, Password (minimum 6 characters), Username, Choose Country (dropdown), Choose Regional Designation (dropdown), Choose Agency (dropdown), a checkbox for "I'm not a robot", and a "Sign Up Now" button. There is also a link for "Need help? Contact Us" and a note "or login if you already have an account".

Select the **California, Behavioral Health-San Diego County** training bundle

Academy Bundles

Type to search

Creation Date Update Date

California, Behavioral Health- San Diego County
by Lauren Schmidt | 3 courses | Category: California / Behavioral Health-San Diego County
This bundle is for Users who need to Certify in the TCOM Tools for California, San Diego County

Enter your coupon code in the box, and click **Redeem**

\$12 /annually

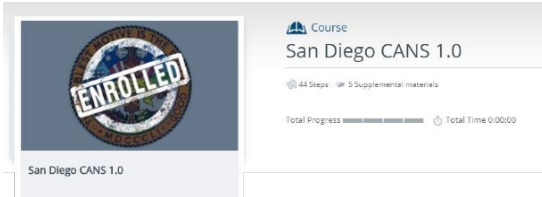
# of Users	Per User	Total
1	\$12	\$12

Buy Now

Recertification requires a new coupon code each time

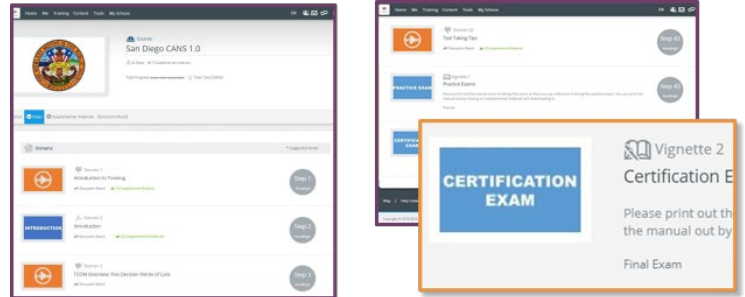
Step 3 Complete Online Course

Select the **San Diego CANS 1.0** course



Once you've enrolled in the San Diego CANS 1.0 you will have access to the eLearning and the certification exam

It's recommended you complete the eLearning prior to attempting the certification exam

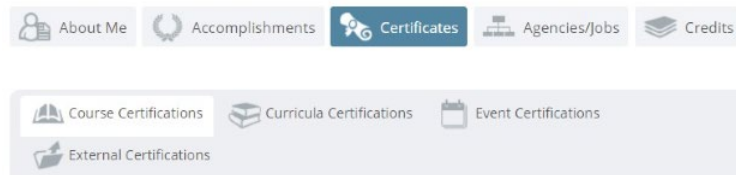


Step 4 Pass Certification Exam

You'll need a score of **0.7** to pass the CANS Certification Exam

You can download a certificate from the Praed website at any time

Your certificate includes your passing score and the date of your certification



Remember: Annual recertification is required!

Make note of your certification date and set a calendar reminder to recertify in one year

Child and Adolescent Needs and Strengths (CANS) Overview Virtual Training

Trainer(s): [Shelly Paule, MSW, LCSW](#) , and [Eileen Quinn-O'Malley, LMFT](#)

Course Code: BHO209

Course Description

The Child and Adolescent Needs and Strengths (CANS) has been adopted by the state of California as the standard tool for assessment of children and youth. The CANS is a collaboratively completed measure of child and family strengths and needs. The evidenced based, standardized assessment was developed to support decision making, service planning, to facilitate quality improvement initiatives, and to allow for the monitoring of clinical and functional outcomes. As a communication tool, it facilitates the linkage between the assessment process and the design of individualized service plans. This training provides an overview of the San Diego CANS 1.0 version (ages 6-21) and Early Childhood CANS along with a set of tactics all designed to facilitate the effective and an integrated approach to addressing the needs of children, youth and families. Using mock vignettes and small group activities, this 5-hour, interactive virtual training session will prepare users for the certification test and use of the California San Diego CANS 1.0.

Click here to see the [training outline](#).

Audience

CYF-BHS counselors, case managers, therapists, supervisors, and other direct service providers utilizing the CANS assessment.

Location: Live Virtual Training: This training will be conducted via [Zoom](#)

Dates: Thursday, May 21, 2020

Time: 9:00 am to 3:00 pm

Learning Objectives

Educational Goal: *To provide an overview of the CANS Assessment and prepare participants for the CANS certification and recertification which is required to utilize the CANS while working with children, youth and families who are involved with behavioral health services.*

- Describe the San Diego County CANS and its purpose
- Define the role of structured assessments in the behavior health system
- Identify the linkage between the assessment and the treatment planning process
- Demonstrate understanding of the San Diego County CANS domains and items
- Practice using the action levels through a mock vignette
- Prepare for the on-line certification test

Passing the Child and Adolescent Needs and Strengths (CANS) certification exam is a requirement for all who will administer the CANS. This training will equip the user to administer the tool, use the results for treatment planning and prepare the participant for CANS certification.

[Click Here](#) to log into the LMS and Register

Registration: If you already have an account, you may search for the course by name or course code. If you do not have an account in the LMS you will need to open one by [clicking here](#). Email RIHS@sdsu.edu if you have any questions. This training is FREE of charge to BHS County employees and contractors.

Continuing Education: This course meets the qualifications for 5 hours of continuing education credit for LMFTs, LCSWs, LPCCs, and/or LEPs as required by the California Board of Behavioral Sciences. The Academy for Professional Excellence is approved by the American Psychological Association to sponsor continuing education for psychologists and the California Association of Marriage and Family Therapists to sponsor continuing education for LMFTs, LCSWs, LPCCs and LEPs, Provider #91928. The Academy for Professional Excellence is approved by the California Board of Registered Nursing, Provider # BRN CEP15014; CCAPP-EI, Provider # 1S-98-398-0820, and CAADE Provider # CP40-906-CH0323 for 5 contact hours/CEHs. The Academy for Professional Excellence maintains responsibility for this program and its content. CE certificates will be available for download 5 business days after course completion. Click here for information on how to [obtain CE Certificates](#). Click here for the [CE Grievance Procedure](#).