

# Help Guide Behavioral Health in San Diego County!

**We Want to Hear From You!**

Behavioral Health Services (BHS) invites you to attend upcoming opportunities to provide input to support the development of the first Behavioral Health Services Act (BHSA) Integrated Plan for Fiscal Years 2026-2029. Community members are invited to join an upcoming virtual input sessions to share your insights and recommendations on important behavioral health topics. Input will help inform specialty mental health and substance use disorder treatment services, priorities, and future investments, ensuring local programming reflects the needs and voices of San Diego County communities.

## UPCOMING EVENTS\*

**04  
Nov**

### Crisis Services

- Morning Option: 10:00 a.m.–11:30 a.m.
- Evening Option: 5:30 p.m.–7:00 p.m.

**03  
Dec**

### Behavioral Health Workforce

- Morning Option: 10:00 a.m.–11:30 a.m.
- Evening Option: 5:30 p.m.–7:00 p.m.

**12  
Nov**

### Housing Interventions

- Morning Option: 10:00 a.m.–11:30 a.m.
- Evening Option: 5:30 p.m.–7:00 p.m.

**09  
Dec**

### Early Intervention

- Morning Option: 10:00 a.m.–11:30 a.m.
- Evening Option: 5:30 p.m.–7:00 p.m.

**19  
Nov**

### Substance Use Disorder Services

- Morning Option: 10:00 a.m.–11:30 a.m.
- Evening Option: 5:30 p.m.–7:00 p.m.

**Scan the QR Code or visit the link below to Register:**



- Visit [bit.ly/BHSEngagement](https://bit.ly/BHSEngagement) to register for one of the sessions listed.
- Registration is required.

To find out more about BHSA/Prop 1, share your thoughts on BHSA planning, review past engagements, and more, visit:

[bit.ly/BHSA\\_BHS](https://bit.ly/BHSA_BHS)

**\*All sessions held via Zoom.**



## Questions?

Please email [Engage.BHS@sdcounty.ca.gov](mailto:Engage.BHS@sdcounty.ca.gov) with any inquiries about the planning session.

Disability-related accommodations, language interpretation (including American Sign Language), and written materials in alternative languages and formats are available upon request. Please submit your request at least 72 hours in advance of the event to [Engage.BHS@sdcounty.ca.gov](mailto:Engage.BHS@sdcounty.ca.gov) or by calling (619) 854-1363.



**LIVE WELL  
SAN DIEGO**



COUNTY OF SAN DIEGO BEHAVIORAL HEALTH SERVICES (BHS)

***Transforming Behavioral Health Services Together:***

# **Substance Use Disorder Services**

***Wednesday, November 19, 2025***

**BEHAVIORAL HEALTH SERVICES ACT OVERVIEW  
& COMMUNITY INPUT SESSION**

**BHS Communication & Engagement Unit**

*Melanie Briones, MBA, MPH, Program Coordinator*

# Land Acknowledgment



We acknowledge that the San Diego County region is made up of the traditional lands of the Kumeyaay, Luiseño/Payómkaichum, Cahuilla and Cupeño/Kuupangaxwichem Peoples.

We acknowledge the harmony that existed among the land, nature, and its original Peoples, who have since endured displacement, persecution, and systemic oppression.

We pay our respect to the unceded territory and homelands of the 18 federally recognized tribes in our region.

We honor the ancestral grounds and sovereignty of the Tribal Nations, whose resilience and strength inspire forward movement towards more equitable and sustainable programs, policies, and practices.

# Today's Session



LIVE WELL  
SAN DIEGO

- **Background & Context**

- Behavioral Health Care in California
- About the Behavioral Health Services Act (BHSA)
- BHSA Integrated Plan and San Diego County's Community Planning Process

- **Input Session**

- **Next Steps**



# Why Today's Conversation?



LIVE WELL  
SAN DIEGO

- Under BHSA, counties must identify how communities would like to see funds prioritized when it comes to specialty behavioral health services – including crisis care, early intervention, and housing, among others.
- BHSA and other California Behavioral Health Transformation efforts aim to ensure people receive help in the least restrictive, most community-based setting possible.

***Your insights and recommendations will help County BHS strengthen its services and help guide development of the region's first BHSA Integrated Plan for 2026-2029.***

# Behavioral Health Care in California



- In California’s Medi-Cal system, care is divided between:
- Managed Care Plans (MCPs), which cover **mild-to-moderate** behavioral health needs; and
  - County Behavioral Health Plans (BHPs), which cover **moderate-to-severe or complex** behavioral health needs (also known as specialty behavioral health services).

If someone’s needs are...	Care typically starts with...	County BHS steps in when...
<b>Mild</b> <b>Examples:</b> Stress, early anxiety, grief, burnout	Doctor or other primary care provider through MCP	Symptoms persist, worsen, or begin to interfere with daily life
<b>Moderate</b> <b>Examples:</b> Persistent depression, trauma, substance misuse	Therapist, psychiatrist, case manager covered by MCP or private insurance	A person needs specialty treatment, multiple supports, or crisis help
<b>Severe or complex</b> <b>Examples:</b> psychosis, suicidality, overdose risk, homelessness	-----	County BHS provides or coordinates full specialty care



# Behavioral Health Care in California



<b>Managed Care Plans (MCP)</b> <i>Blue Shield Promise, Community Health Group, Kaiser Permanente, Molina Healthcare</i>	<b>Federally Qualified Health Centers (FQHCs) &amp; Community Health Centers (CHCs)</b>	<b>Specialty Behavioral Health Plan (BHP)</b> <i>County of San Diego Behavioral Health Services</i>
<ul style="list-style-type: none"><li>• Short-term or lower-intensity outpatient care, such as brief therapy or medication management</li><li>• Care coordination and linkages for MCP-operated CaAIM programs, including Enhanced Care Management (ECM) and Community Supports (CS)</li></ul>	<ul style="list-style-type: none"><li>• Mild-moderate behavioral health services, such as screening, early identification of needs, medication management, care coordination, and navigation</li><li>• Bridge between MCP and BHP systems</li></ul>	<ul style="list-style-type: none"><li>• Specialty and intensive services, such as crisis care, substance use disorder (SUD) residential care, ACT-level case management</li><li>• Step-down/step-up collaboration with MCPs and FQHCs/CHCs as people move between levels of care</li></ul>

***Navigating across the system can be complex — new State policies, including BHSA, are intended to make care transitions smoother for people seeking support.***

# About BHSA



- Part of Proposition 1; takes effect July 1, 2026
- Modernizes the Mental Health Services Act (MHSA) passed by CA voters in 2004
- No additional funding introduced, but brings new components, requirements, and restrictions for how revenue derived from millionaire's tax may be used by counties for behavioral health programs/services

**Learn More**

[bit.ly/BHSA\\_BHS](https://bit.ly/BHSA_BHS)



SanDiegoCounty.gov Home

## Behavioral Health Services

GET HELP NOW I WANT TO FIND MENTAL HEALTH SUBSTANCE USE

### Behavioral Health Services Act

The Behavioral Health Services Act, also known as BHSA, is a state law passed by voters in March 2024. BHSA updates the [Mental Health Services Act \(MHSA\)](#) by:

- Expanding service access to include treatment for people with substance use disorders,
- Prioritizing care for people with the most serious mental illness,
- Providing ongoing resources for housing and workforce development, and
- Continuing investments in prevention, early intervention, and innovative behavioral health pilot programs.

BHSA aims to close service gaps and ensure equitable access to quality care across the state. New BHSA requirements will also enhance oversight, transparency, and accountability at the state and local levels.

To learn more about BHSA:

- [Behavioral Health Transformation \(DHCS\)](#)

To receive updates about BHSA, subscribe to these statewide sites:

- [Department of Health Care Services \(DHCS\)](#)
- [California Department of Public Health \(CDPH\)](#)

### Community Planning

BHSA requires counties to look at their whole behavioral health system of care through a formal Community Planning Process (CPP). The CPP supports the County of San Diego's goal to involve communities in meaningful conversations and decision-making about local behavioral health services to ensure programs reflect their unique needs and voices.

#### Share Input via Our Online Form

Access this online form to share insights and recommendations with BHS to help guide the development of San Diego County's first BHSA Integrated Plan for Fiscal Years 2026–2029.

#### Participate in Upcoming Activities

View upcoming and past engagement activities hosted by the department, including community workshops, town halls, and input opportunities to help inform the BHSA Integrated Plan for Fiscal Years 2026–2029.



- Broadens scope of funding to include standalone substance use disorder (SUD) treatment services and housing interventions; bolsters oversight and transparency
- Mandates data-driven reporting and population-level outcome tracking
  - Behavioral Health Outcomes, Accountability, and Transparency Report<sup>NEW</sup>
- Mandates increased stakeholder engagement (approx. three-fold increase)
- Emphasis on supporting high-need and at-risk populations, evidence-based and community-defined practices, the behavioral health workforce, and health equity

# Key BHSA Populations



LIVE WELL  
SAN DIEGO

## Eligible adults/older adults who are:

- Chronically homeless or experiencing homelessness or are at risk of homelessness.
- In, or are at risk of being in, the justice system.
- Reentering the community from prison or jail.
- At risk of conservatorship.
- At risk of institutionalization.

## Eligible children and youth who are:

- Chronically homeless or experiencing homelessness or are at risk of homelessness.
- In, or are at risk of being in, the juvenile justice system.
- Reentering the community from a youth correctional facility.
- In the child welfare system.
- At risk of institutionalization.

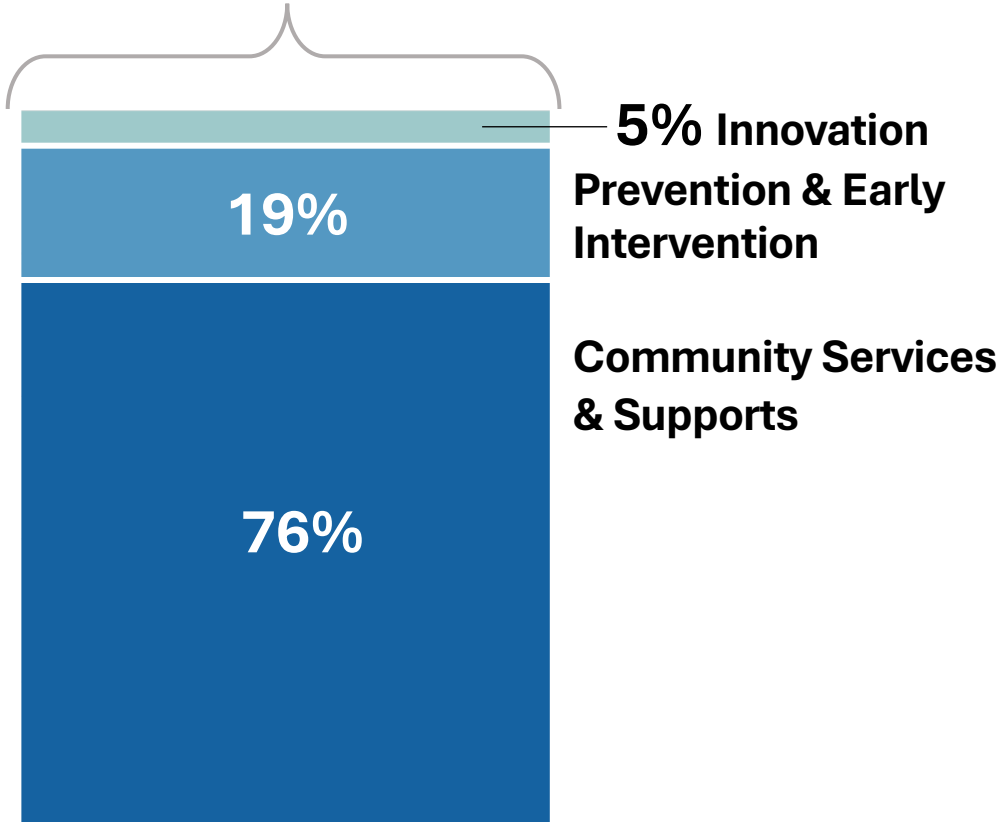


# BHSA Components



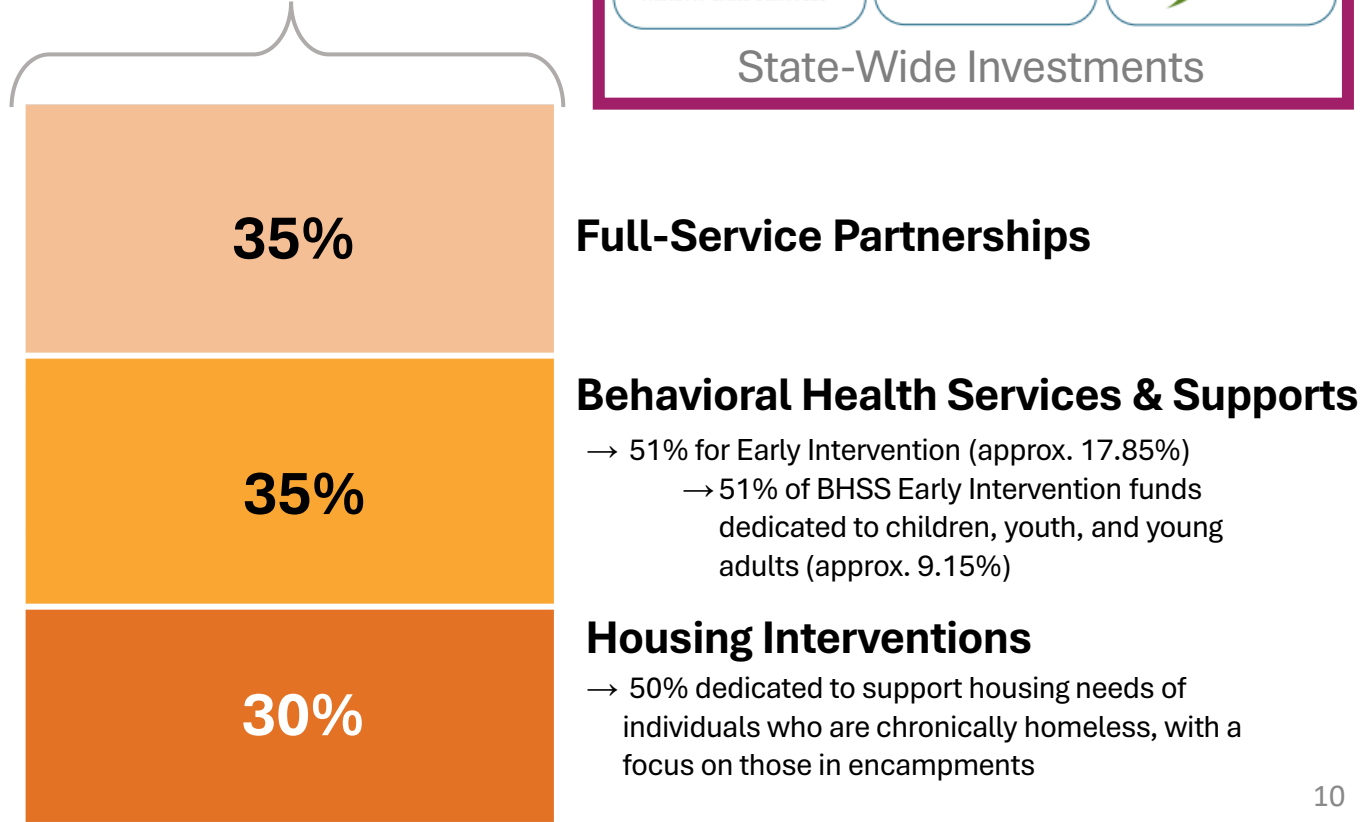
## County Allocation of MHSA Dollars (Before Prop 1)

95% County Allocation  
5% State



## County Allocation of Proposed BHSA Dollars (Under Prop 1)

90% County Allocation  
10% State



# BHSA Components



- **Full Service Partnerships (FSPs)** – provides team-based “whatever it takes” support for people with serious behavioral health needs, focusing on recovery, whole-person care, and family partnerships.
- **Behavioral Health Services and Supports (BHSS)** – includes treatment and recovery services like therapy, case management, medication support to promote wellness across all ages.
- **Housing Interventions** – helps people with behavioral health needs find and maintain stable housing through supports like rental assistance and housing navigation services.

## **BHSS**

- *Children’s, Adult, and Older Adult Systems of Care*
- *Outreach & Engagement*
- *Workforce Education and Training*
- *Capital Facilities and Technological Needs*
- *Early Intervention Programs*
- *Innovative Behavioral Health Pilots and Projects*

# BHSA Components



- **BHSS dollars may only support activities that align with counties' roles as BHPs, i.e.,** programs and services for people showing early signs of MH/SU challenges; programs that identify and link individuals to care early, early treatment and recovery supports to prevent crisis or hospitalization; crisis and stabilizations services; housing, workforce, and treatment investments that serve specialty populations

BHSA Component	Focus	Examples of Fundable Uses
<b>Full Service Partnerships (35%)</b>	Intensive, “whatever it takes” care for people with serious behavioral health conditions	Multidisciplinary teams, housing and employment supports, recovery planning, peer services
<b>Behavioral Health Services &amp; Supports (35%)</b>	Prevention of worsening symptoms, early intervention, and treatment supports for all ages	Outreach and linkage programs, early treatment, crisis services, workforce training, recovery supports <b>**NO GENERAL PREVENTION/EDUCATION (State)</b>
<b>Housing Interventions (30%)</b>	Housing for people with behavioral health needs	Rental subsidies, housing navigation, tenancy support, behavioral health services linked to housing

# BHSA Integrated Plan



LIVE WELL  
SAN DIEGO

**Counties' first BHSA Integrated Plan will cover  
Fiscal Years 2026-2029 and be due to DHCS by June 30, 2026.**

## **All counties given template by state to provide:**

- County Demographics and Behavioral Health Needs
- Plan Goals and Objectives
- **Community Planning Process (CPP)**
- Comment Period and Public Hearing
- County Behavioral Health Care Continuum Capacity
- Services by Total Funding Source
- Behavioral Health Services Fund Programs
- Workforce Strategy
- Budget and Prudent Reserve



**Section 3  
County  
Integrated  
Plan**




<https://policy-manual.mes.dhcs.ca.gov/behavioral-health-services-act-county-policy-manual/V1.0.0/3-county-integrated-plan>



# BHSA: CPP Timeline



<b>Phase 1</b> Receive New State Guidance for Planning	 <b>Phase 2</b> <b>Conduct Community Engagement &amp; Education</b>	<b>Phase 3</b> Develop IP (Fiscal Years 2026-2029)	<b>Phase 4</b> Review & Approve IP	<b>Phase 5</b> Submit IP to State
<b>Summer 2025-Fall 2025</b>	<b>Fall 2025-Winter 2026</b>	<b>Winter 2026-Spring 2026</b>	<b>Spring 2026-Summer 2026</b>	<b>By June 30, 2026</b>
<ul style="list-style-type: none"> <li>• Review BHSA County Policy Manual (finalized June 2025) and evaluate new requirements for counties from the California Department of Health Care Services (DHCS).</li> <li>• Attend DHCS webinars for counties on Integrated Plan (IP) development and the Community Planning Process (CPP) to structure BHSA CPP engagement activities.</li> </ul>	<ul style="list-style-type: none"> <li>• Facilitate outreach, listening sessions, focus groups, and other opportunities at community events and convenings for stakeholders to provide input.</li> <li>• Document key learnings and stakeholder recommendations to support community priorities and system needs.</li> <li>• Provide BHSA education through informational handouts and presentations at public meetings.</li> </ul>	<ul style="list-style-type: none"> <li>• Department synthesis of stakeholder input, fiscal data, and program assessments.</li> <li>• Draft San Diego County's IP for Fiscal Years 2026–2029.</li> </ul>	<ul style="list-style-type: none"> <li>• Post IP draft for public comment and feedback.</li> <li>• Present proposed IP to the San Diego County Board of Supervisors (Board).</li> <li>• Incorporate public comments and finalize IP language.</li> </ul>	<ul style="list-style-type: none"> <li>• Board-approved IP provided to State (DHCS) through their BHSA County Portal.</li> <li>• Prepare for official implementation of BHSA funding and reporting requirements on July 1, 2026.</li> </ul>

# BHSA: CPP Activities



LIVE WELL  
SAN DIEGO

- BHS is conducting engagement and education activities thru various mechanisms
  - Activities include input sessions, focus groups, interviews, tabling exchanges at outreach events, as well as informational BHSA workshops
- Input opportunities during this baseline year for BHSA are focused on hearing stakeholder insights and recommendations related to key topics which are new components and/or have heightened focus under BHSA, including:
  - Crisis response services – *sessions 11/04/2025*
  - Housing interventions – *sessions 11/12/2025*
  - Substance use disorder (SUD) treatment services – *sessions 11/19/2025*
  - Behavioral Health Workforce – *sessions 12/03/2025*
  - Early intervention for youth and young adults – *sessions 12/09/2025*

# Your Input Matters



LIVE WELL  
SAN DIEGO

## Text

- BHSA brings prevention, crisis, treatment, housing, and workforce efforts under one coordinated framework.
- Related State efforts, such as CalAIM, 9-8-8 Expansion, and Proposition 1, direct county BHPs to align services and funding to create a more connected system of care.

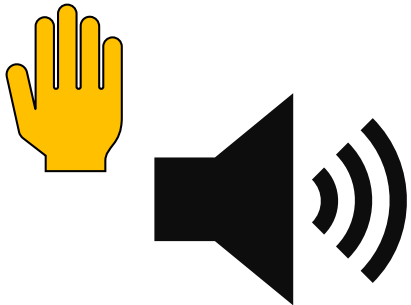
# **Input Session Overview**

The bottom of the slide features three overlapping, wavy horizontal bands. The top band is a medium blue, the middle band is a lighter teal, and the bottom band is white. These bands create a sense of movement and depth at the base of the presentation.

# Ways to Engage



**During today's session, there are multiple ways to share your thoughts and feedback:**



**Raise Hand & Unmute**



**Zoom Chat**



**Mentimeter**

# Input Session Questions



LIVE WELL  
SAN DIEGO

1. What kinds of supports or services help people in your community reduce or stop harmful substance use?
2. How can we make substance-use services easier to access, especially for those not already connected to care?
3. What prevention or recovery programs feel most culturally relevant or community-driven?
4. How can BHSA help bridge gaps between substance-use treatment, housing, and behavioral health care?
5. Anything else you would like to share with BHS for the BHSA Integrated Plan?



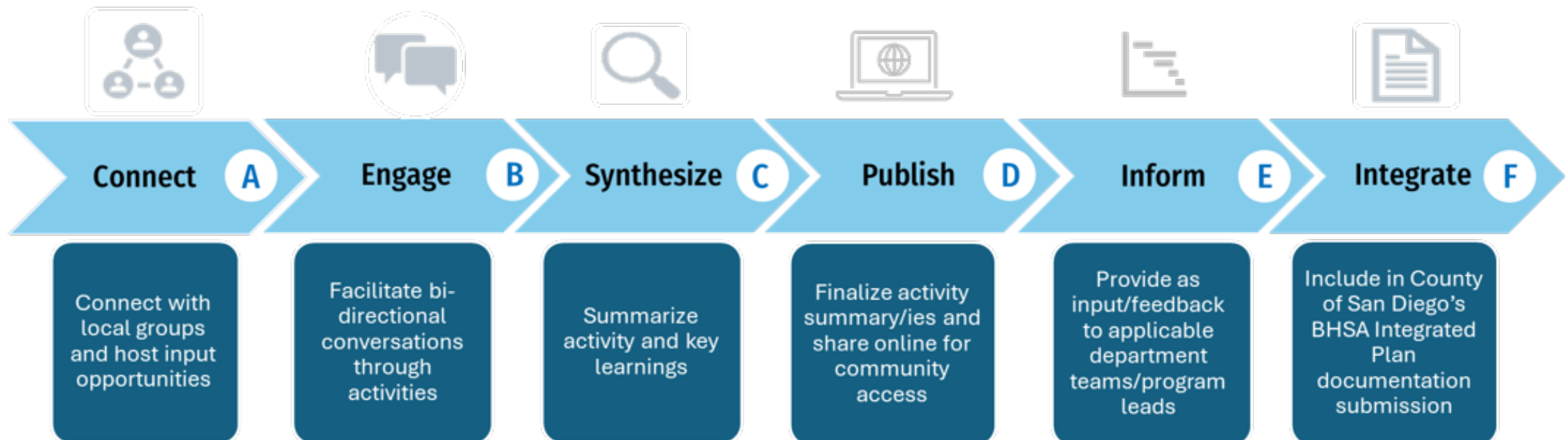
# Next Steps



LIVE WELL  
SAN DIEGO

## How is info from CPP input sessions being utilized by the department?

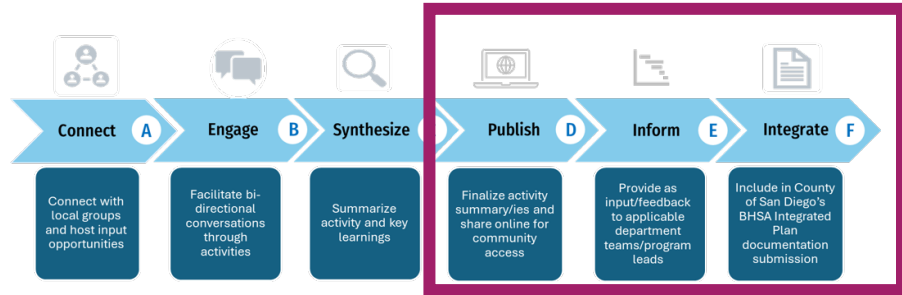
*Input will inform specialty mental health and substance use disorder treatment services priorities, investments, and recommendations included in the first BHSA Integrated Plan scheduled for presentation to the San Diego County Board of Supervisors in Summer 2026.*



# Activity Summaries



LIVE WELL  
SAN DIEGO



County of San Diego Health and Human Services Agency - Behavioral Health Services

**BHS Housing Council Input Session Engagement Summary**

Overview: This report summarizes the Thursday, May 1, 2025, input session between the County of San Diego Housing Council, Behavioral Health Services (BHS), housing stakeholders, and community members, examining how the Behavioral Health Services Act (BHSA) will shape housing policies.

Section	Details
Engagement Title	Housing Council Listening Session
Format	<input checked="" type="checkbox"/> In-Person <input type="checkbox"/> Virtual <input type="checkbox"/> Hybrid
Date	Thursday, May 1, 2025
Time	10:30 AM-11:30 AM
Location	County of San Diego Housing and Community Development Services (HCDS), 3899 Bollen Rd, San Diego, CA, 92123
Activity Details	60-min discussion: <ul style="list-style-type: none"> <li>Nearly 40 attendees</li> <li>4 discussion questions</li> <li>200+ comments received: <ul style="list-style-type: none"> <li>153 comments submitted through Mentimeter</li> <li>40 comments through open discussion</li> </ul> </li> </ul>
Participation	

**Summary of Engagement Activity**

On May 1, 2025, the County of San Diego Behavioral Health Services (BHS), in collaboration with the University of California, San Diego (UCSD) Health Partnership, hosted a listening session during the BHS Housing Council Retreat at the San Diego County Housing and Community Development Services (HCDS) building. The Housing Council provides guidance on the design, implementation, and evaluation of housing interventions to address the behavioral health needs of individuals at risk of or experiencing homelessness or housing insecurity. This session was designed to gather early input to inform the development of the County's first Behavioral Health Services Act (BHSA) Integrated Plan and input session questions were formulated based on prior input and work of the Council, including the 2022-2027 Strategic Housing Plan.

Approximately 40 participants attended the retreat, including the Council's 10 voting members and representatives from community-based organizations, housing developers, advocacy groups, and government and non-government agencies.

Participating organizations included:

- National CORE
- Alpha Project
- Vista Hill
- Corporation for Supportive Housing (CSH)
- Legal Aid Society
- Jewish Family Services of San Diego
- Mobile Crisis Response Team (MCRT) Exodus Recovery
- San Diego Housing Commission (SDHC)
- Clavdia
- Wakeland Housing and Development Corporation
- Housing Innovation Partners (HIP)

10/09/2025 1

## Key Learnings

- Rigid Policies Create Barriers to Stable and Accessible Housing**  
Barriers include eligibility rules, funding limits, and a mismatch of services when complex health needs exist. Eligibility rules like Coordinated Entry Systems (CES) matching, Housing and Urban Development restrictions, and felony exclusions all prevent access. Funding limits further narrow eligibility: for example, Supplemental Security Insurance (SSI) excludes board and care for high-need individuals. Service mismatch makes housing waits too long for clients with specialized care needs that require access to Assertive Community Treatment (ACT), and Full-Service Partnership (FSP).

## Audience Recommendations

- Dedicate Funding for Capital Development**  
Participants recommended the County dedicate the full 25% allowable under the BHSA 30% Housing Intervention Component to capital development projects. Maximizing this investment would be essential to expand the supply of Permanent Supportive Housing (PSH) and meet needs of individuals with serious behavioral health conditions at risk or experiencing homelessness. Recapitalization of "No Place Like Home," in collaboration with County Housing and Development Services was also suggested.

- Activity Summaries approved by BHAB on 09/04/25
- Overview of activity, participants, discussion(s) held, including questions proctored
- Three primary uses once finalized

# Have Additional Input?





Visit our BHSA website!



SCAN ME

[bit.ly/BHSA\\_BHS](https://bit.ly/BHSA_BHS)



## Behavioral Health Services Act Online Input Form

SAN DIEGO COUNTY, CALIFORNIA

The County of San Diego's Behavioral Health Services Department invites you to share your ideas and recommendations for behavioral health programs and services as California counties prepare to implement the Behavioral Health Services Act on July 1, 2026.

The Behavioral Health Services Act (BHSA) modernizes the Mental Health Services Act (MHSA) and is a key component of the 2025-2029 Integrated Plan for Fiscal Years 2026-2029.

What about BHSA would you like to provide input on?

Select from the list below to populate response boxes:

- ☐ Behavioral Health Services and Supports (BHSS) component
- ☐ BHSS: Workforce Education and Training
- ☐ BHSS: Early Intervention
- ☐ Full Service Partnerships (FSP) component
- ☐ Substance Use Disorder (SUD) Services
- ☐ Housing Interventions component
- ☐ Communities Most Impacted
- ☐ Other


About You

Please share a little about yourself to help us understand who we heard from.

Which of the following best describes you and/or the agency or organization you represent? \*

(Mark all that apply)

- ☐ Adult or older adult with lived mental health or substance use experience
- ☐ Youth or young adult with lived mental health or substance use experience
- ☐ Family member of someone with lived mental health or substance use experience
- ☐ Mental health, substance use, or social services provider
- ☐ Public or government agency



### Behavioral Health Services

GET HELP NOW I WANT TO FIND ▼ MENTAL HEALTH ▼ SUBSTANCE USE ▼ CONNECT ▼

## Community Planning

BHSA requires counties to look at their whole behavioral health system of care through a formal Community Planning Process (CPP). The CPP supports the County of San Diego's goal to involve communities in meaningful conversations and decision-making about local behavioral health services to ensure programs reflect their unique needs and voices.

Share Input via Our Online Form

Access this online form to share insights and recommendations with BHS to help guide the development of San Diego County's first BHSA Integrated Plan for Fiscal Years 2026–2029.

Participate in Upcoming Activities

View upcoming and past engagement activities hosted by the department, including community workshops, town halls, and input opportunities to help inform the BHSA Integrated Plan for Fiscal Years 2026–2029.

# Stay Connected



LIVE WELL  
SAN DIEGO

## Upcoming Engagement Opportunities

## Planned Engagement Activities

## Past Activity Materials

SCAN ME



Contact Us

Communication & Engagement Unit: [Engage.BHS@sdcounty.ca.gov](mailto:Engage.BHS@sdcounty.ca.gov)

The screenshot shows the Behavioral Health Services website. The header includes the County of San Diego logo and navigation links: GET HELP NOW, I WANT TO FIND, MENTAL HEALTH, SUBSTANCE USE, and CONNECT. The main content area is titled "Join Us for an Upcoming Activity" and features three cards:

- Virtual Input Session:** Behavioral Health Advisory Board (BHAB) AOD Continuum of Care Subcommittee Input Session. Join us on Monday, October 13, 2025, from 3:00pm - 4:30pm.
- LIVE WELL ADVANCE CONFERENCE & SCHOOL SUMMIT:** Reflecting on 10 Years of Collective Impact. Connect with Behavioral Health Services (BHS) and thousands of other local partners at the 10th Annual Live Well Advance.
- Virtual Input Session:** Behavioral Health Advisory Board (BHAB) Re-Entry Support Subcommittee Input Session. Join us on Monday, October 27, 2025, from 3:30pm - 5:00pm for a virtual input session, co-

Below the cards is a section titled "Activities" with a QR code and the text "SCAN ME".

The screenshot shows a document titled "BHS Housing Council Input Session Engagement Summary". The document includes an overview, a table of session details, and a summary of the engagement activity.

**Overview:** This report summarizes the Thursday, May 1, 2025, input session between the County of San Diego Housing Council, Behavioral Health Services (BHS), housing stakeholders, and community members, examining how the Behavioral Health Services Act (BHSA) will shape housing policies.

Section	Details
Engagement Title	Housing Council Listening Session
Format	<input checked="" type="checkbox"/> In-Person <input type="checkbox"/> Virtual <input type="checkbox"/> Hybrid
Activity Details	<b>Date:</b> Thursday, May 1, 2025 <b>Time:</b> 10:30 AM-11:30 AM <b>Location:</b> County of San Diego Housing and Community Development Services (HCDS), 3665 Ruffin Rd, San Diego, CA 92123
Participation	<b>60-min discussion:</b> <ul style="list-style-type: none"><li>Nearly 40 attendees</li><li>4 discussion questions</li><li>200+ comments received</li><li>163 comments submitted through Mentimeter</li><li>40 comments through open discussion</li></ul>

**Summary of Engagement Activity**

On May 1, 2025, the County of San Diego Behavioral Health Services (BHS), in collaboration with the University of California, San Diego (UCSD) Health Partnership, hosted a listening session during the BHS Housing Council Retreat at the San Diego County Housing and Community Development Services (HCDS) building. The Housing Council provides guidance on the design, implementation, and evaluation of housing interventions to address the behavioral health needs of individuals at risk of or experiencing homelessness or housing insecurity. This session was designed to gather early input to inform the development of the County's first Behavioral Health Services Act (BHSA) Integrated Plan and input session questions were formulated based on prior input and work of the council, including the 2022-2027 Strategic Housing Plan.

Approximately 40 participants attended the retreat, including the County's 10 voting members and representatives from community-based organizations, housing developers, advocacy groups, and government and non-government agencies.

**Participating organizations included:**

- National CCRC
- Alpha Project
- Vista HB
- Corporation for Supportive Housing (CSH)
- Legal Aid Society
- Jewish Family Services of San Diego
- Mobile Crisis Response Team (MCRT)/Exodus Recovery

**Lessons Learned**

Participants emphasized the importance of meaningful role models and should help start property from desks, embedding peers in design and policy decisions, and creating a supportive environment. Strong emphasis was placed on compensation and creating career pathways with compensation for peers as support staff could increase engagement.

**Cultural Responsiveness & Specialized Teams**

Participants urged investment in culturally specific providers and hiring a diverse workforce. Examples included Spanish-speaking ACT teams, culturally tailored peer navigators, and housing providers rooted in community trust.

**Creative Access & Engagement Models**

Participants expressed a desire to perhaps use wellness kiosks (similar to like in convenience stores), mobile resource buses, lending platforms, and libraries as service hubs. These approaches were seen as essential for lowering barriers and reaching harder-to-engage populations.

# Thank You!



LIVE WELL  
SAN DIEGO