



COUNTY OF SAN DIEGO BEHAVIORAL HEALTH SERVICES (BHS)

**Behavioral Health Services Act (BHSA)
Overview & Input Session at**

IHP Behavioral Health Workgroup Meeting

Thursday, November 20, 2025, 4:00 PM – 5:00 PM

BHS Communication & Engagement Unit

Land Acknowledgment



We acknowledge that the San Diego County region is made up of the traditional lands of the Kumeyaay, Luiseño/Payómkaichum, Cahuilla and Cupeño/Kuupangaxwichem Peoples.

We acknowledge the harmony that existed among the land, nature, and its original Peoples, who have since endured displacement, persecution, and systemic oppression.

We pay our respect to the unceded territory and homelands of the 18 federally recognized tribes in our region.

We honor the ancestral grounds and sovereignty of the Tribal Nations, whose resilience and strength inspire forward movement towards more equitable and sustainable programs, policies, and practices.

Today's Session



LIVE WELL
SAN DIEGO

- **Background & Context**
 - Behavioral Health Care in California
 - About the Behavioral Health Services Act (BHSA)
- **Input Session**
 - BHSA Integrated Plan and San Diego County's Community Planning Process
 - Mentimeter
- **Next Steps**



Why Today's Conversation?



LIVE WELL
SAN DIEGO

- Under BHSA, counties must identify how communities would like to see funds prioritized when it comes to specialty behavioral health services – including crisis care, early intervention, and housing, among others.
- BHSA and other California Behavioral Health Transformation efforts aim to ensure people receive help in the least restrictive, most community-based setting possible.

Your insights and recommendations will help County BHS strengthen its services and help guide development of the region's first BHSA Integrated Plan for 2026-2029.

Behavioral Health Care in California



- In California’s Medi-Cal system, care is divided between:
- Managed Care Plans (MCPs), which cover **mild-to-moderate** behavioral health needs; and
 - County Behavioral Health Plans (BHPs), which cover **moderate-to-severe or complex** behavioral health needs (also known as specialty behavioral health services).

If someone’s needs are...	Care typically starts with...	County BHS steps in when...
Mild Examples: Stress, early anxiety, grief, burnout	Doctor or other primary care provider through MCP	Symptoms persist, worsen, or begin to interfere with daily life
Moderate Examples: Persistent depression, trauma, substance misuse	Therapist, psychiatrist, case manager covered by MCP or private insurance	A person needs specialty treatment, multiple supports, or crisis help
Severe or complex Examples: psychosis, suicidality, overdose risk, homelessness	-----	County BHS provides or coordinates full specialty care

Behavioral Health Care in California



Managed Care Plans (MCP) <i>Blue Shield Promise, Community Health Group, Kaiser Permanente, Molina Healthcare</i>	Federally Qualified Health Centers (FQHCs) & Community Health Centers (CHCs)	Specialty Behavioral Health Plan (BHP) <i>County of San Diego Behavioral Health Services</i>
<ul style="list-style-type: none">• Short-term or lower-intensity outpatient care, such as brief therapy or medication management• Care coordination and linkages for MCP-operated CaAIM programs, including Enhanced Care Management (ECM) and Community Supports (CS)	<ul style="list-style-type: none">• Mild-moderate behavioral health services, such as screening, early identification of needs, medication management, care coordination, and navigation• Bridge between MCP and BHP systems	<ul style="list-style-type: none">• Specialty and intensive services, such as crisis care, substance use disorder (SUD) residential care, ACT-level case management• Step-down/step-up collaboration with MCPs and FQHCs/CHCs as people move between levels of care

Navigating across the system can be complex — new State policies, including BHSA, are intended to make care transitions smoother for people seeking support.

About BHSA



- Part of Proposition 1; takes effect July 1, 2026
- Modernizes the Mental Health Services Act (MHSA) passed by CA voters in 2004
- No additional funding introduced, but brings new components, requirements, and restrictions for how revenue derived from millionaire's tax may be used by counties for behavioral health programs/services

Learn More

bit.ly/BHSA_BHS



SanDiegoCounty.gov Home

Behavioral Health Services

GET HELP NOW I WANT TO FIND MENTAL HEALTH SUBSTANCE USE

Behavioral Health Services Act

The Behavioral Health Services Act, also known as BHSA, is a state law passed by voters in March 2024. BHSA updates the [Mental Health Services Act \(MHSA\)](#) by:

- Expanding service access to include treatment for people with substance use disorders,
- Prioritizing care for people with the most serious mental illness,
- Providing ongoing resources for housing and workforce development, and
- Continuing investments in prevention, early intervention, and innovative behavioral health pilot programs.

BHSA aims to close service gaps and ensure equitable access to quality care across the state. New BHSA requirements will also enhance oversight, transparency, and accountability at the state and local levels.

To learn more about BHSA:

- [Behavioral Health Transformation \(DHCS\)](#)

To receive updates about BHSA, subscribe to these statewide sites:

- [Department of Health Care Services \(DHCS\)](#)
- [California Department of Public Health \(CDPH\)](#)

Community Planning

BHSA requires counties to look at their whole behavioral health system of care through a formal Community Planning Process (CPP). The CPP supports the County of San Diego's goal to involve communities in meaningful conversations and decision-making about local behavioral health services to ensure programs reflect their unique needs and voices.

Share Input via Our Online Form

Access this online form to share insights and recommendations with BHS to help guide the development of San Diego County's first BHSA Integrated Plan for Fiscal Years 2026–2029.

Participate in Upcoming Activities

View upcoming and past engagement activities hosted by the department, including community workshops, town halls, and input opportunities to help inform the BHSA Integrated Plan for Fiscal Years 2026–2029.

About BHSA



- Broadens scope of funding to include standalone substance use disorder (SUD) treatment services and housing interventions
- Mandates data-driven reporting and population-level outcome tracking
 - 8 Statewide Behavioral Health Goals^{NEW}
 - Behavioral Health Outcomes, Accountability, and Transparency Report^{NEW}
- Expands expectations for collaboration with Medi-Cal Managed Care Plans (MCPs), schools, public safety, healthcare systems, and tribal and community partners
 - Increased stakeholder engagement (approx. three-fold increase)
- Elevates expectations for health equity, parity, access, and identification of community-defined needs, especially for priority populations

Key BHSA Populations



LIVE WELL
SAN DIEGO

Eligible adults/older adults who are:

- Chronically homeless or experiencing homelessness or are at risk of homelessness.
- In, or are at risk of being in, the justice system.
- Reentering the community from prison or jail.
- At risk of conservatorship.
- At risk of institutionalization.

Eligible children and youth who are:

- Chronically homeless or experiencing homelessness or are at risk of homelessness.
- In, or are at risk of being in, the juvenile justice system.
- Reentering the community from a youth correctional facility.
- In the child welfare system.
- At risk of institutionalization.

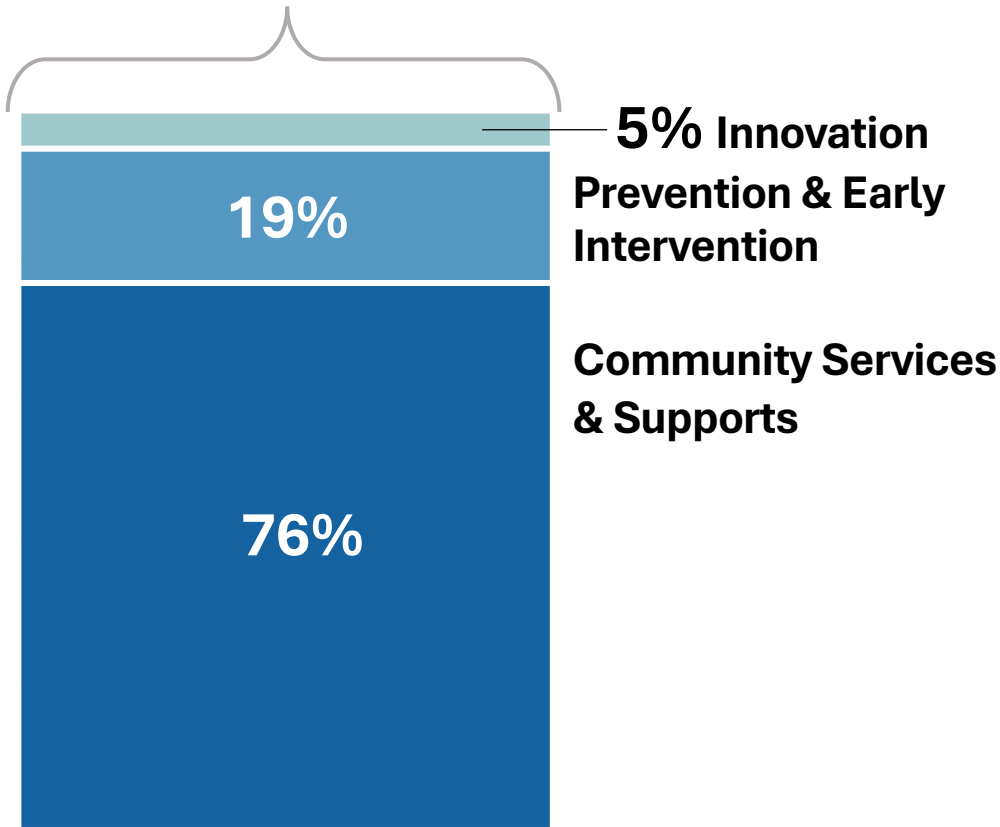


BHSA Components



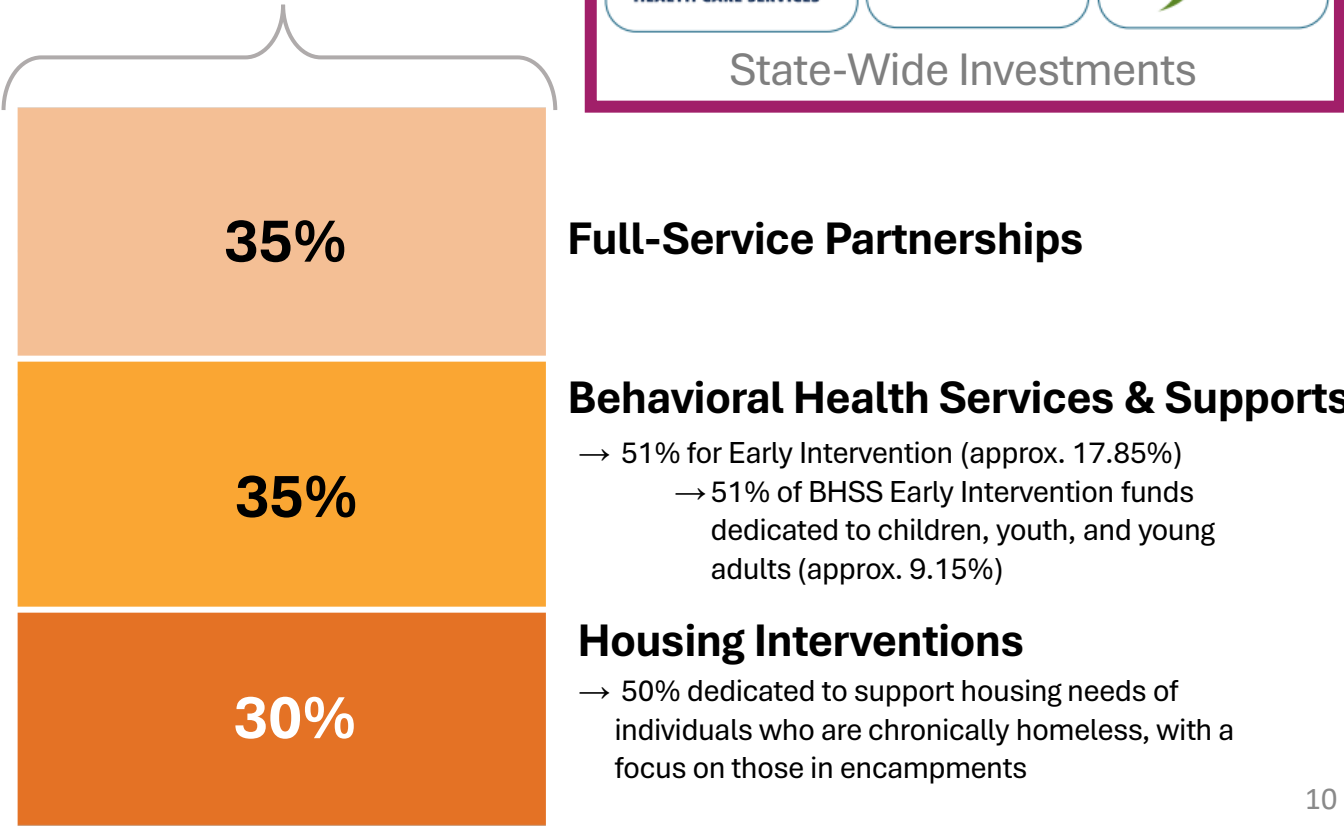
County Allocation of MHSA Dollars (Before Prop 1)

95% County Allocation
5% State



County Allocation of Proposed BHSA Dollars (Under Prop 1)

90% County Allocation
10% State



BHSA Components



- **Full Service Partnerships (FSPs)** – provides team-based “whatever it takes” support for people with serious behavioral health needs, focusing on recovery, whole-person care, and family partnerships.
- **Behavioral Health Services and Supports (BHSS)** – includes treatment and recovery services like therapy, case management, medication support to promote wellness across all ages.
- **Housing Interventions** – helps people with behavioral health needs find and maintain stable housing through supports like rental assistance and housing navigation services.

BHSS

- *Children’s, Adult, and Older Adult Systems of Care*
- *Outreach & Engagement*
- *Workforce Education and Training*
- *Capital Facilities and Technological Needs*
- *Early Intervention Programs*
- *Innovative Behavioral Health Pilots and Projects*

BHSA Components



- **BHSS dollars may only support activities that align with counties' roles as BHPs, i.e.,** programs and services for people showing early signs of MH/SU challenges; programs that identify and link individuals to care early, early treatment and recovery supports to prevent crisis or hospitalization; crisis and stabilizations services; housing, workforce, and treatment investments that serve specialty populations

BHSA Component	Focus	Examples of Fundable Uses
Full Service Partnerships (35%)	Intensive, “whatever it takes” care for people with serious behavioral health conditions	Multidisciplinary teams, housing and employment supports, recovery planning, peer services
Behavioral Health Services & Supports (35%)	Prevention of worsening symptoms, early intervention, and treatment supports for all ages	Outreach and linkage programs, early treatment, crisis services, workforce training, recovery supports **NO GENERAL PREVENTION/EDUCATION (State)
Housing Interventions (30%)	Housing for people with behavioral health needs	Rental subsidies, housing navigation, tenancy support, behavioral health services linked to housing

Areas Most Connected to Your Work

- **Early identification and intervention** for behavioral health needs and conditions seen in primary care
- **Linkages and navigation** – helping patients move across systems smoothly
- **Care coordination** – transition experience as individuals and families move between MCP ↔ BCP services
- **Equity and access** – supporting underserved or unserved populations seen in primary care
- **Recovery supports** – ongoing wellness supports that prevent escalation

BHSA: BHSS

- *Children's, Adult, and Older Adult Systems of Care*
- *Outreach & Engagement*
- *Workforce Education and Training*
- *Capital Facilities and Technological Needs*
- *Early Intervention Programs*
- *Innovative Behavioral Health Pilots and Projects*

Community Planning Process & Input Session Overview

The bottom of the slide features three overlapping, wavy horizontal bands. The top band is a medium blue, the middle band is a lighter teal, and the bottom band is white. These bands create a sense of movement and depth at the base of the presentation.

BHSA Integrated Plan



LIVE WELL
SAN DIEGO

**Counties' first BHSA Integrated Plan will cover
Fiscal Years 2026-2029 and be due to DHCS by June 30, 2026.**

All counties given template by state to provide:

- County Demographics and Behavioral Health Needs
- Plan Goals and Objectives
- **Community Planning Process (CPP)**
- Comment Period and Public Hearing
- County Behavioral Health Care Continuum Capacity
- Services by Total Funding Source
- Behavioral Health Services Fund Programs
- Workforce Strategy
- Budget and Prudent Reserve



**Section 3
County
Integrated
Plan**




<https://policy-manual.mes.dhcs.ca.gov/behavioral-health-services-act-county-policy-manual/V1.0.0/3-county-integrated-plan>

BHSA: CPP Timeline



LIVE WELL
SAN DIEGO

Phase 1 Receive New State Guidance for Planning	 Phase 2 Conduct Community Engagement & Education	Phase 3 Develop IP (Fiscal Years 2026-2029)	Phase 4 Review & Approve IP	Phase 5 Submit IP to State
Summer 2025-Fall 2025	Fall 2025-Winter 2026	Winter 2026-Spring 2026	Spring 2026-Summer 2026	By June 30, 2026
<ul style="list-style-type: none"> • Review BHSA County Policy Manual (finalized June 2025) and evaluate new requirements for counties from the California Department of Health Care Services (DHCS). • Attend DHCS webinars for counties on Integrated Plan (IP) development and the Community Planning Process (CPP) to structure BHSA CPP engagement activities. 	<ul style="list-style-type: none"> • Facilitate outreach, listening sessions, focus groups, and other opportunities at community events and convenings for stakeholders to provide input. • Document key learnings and stakeholder recommendations to support community priorities and system needs. • Provide BHSA education through informational handouts and presentations at public meetings. 	<ul style="list-style-type: none"> • Department synthesis of stakeholder input, fiscal data, and program assessments. • Draft San Diego County's IP for Fiscal Years 2026–2029. 	<ul style="list-style-type: none"> • Post IP draft for public comment and feedback. • Present proposed IP to the San Diego County Board of Supervisors (Board). • Incorporate public comments and finalize IP language. 	<ul style="list-style-type: none"> • Board-approved IP provided to State (DHCS) through their BHSA County Portal. • Prepare for official implementation of BHSA funding and reporting requirements on July 1, 2026.

BHSA: CPP Activities



LIVE WELL
SAN DIEGO

- BHS is conducting engagement and education activities thru various mechanisms
 - Activities include input sessions, focus groups, interviews, tabling exchanges at outreach events, as well as informational BHSA workshops
- Input opportunities during this baseline year for BHSA are focused on hearing stakeholder insights and recommendations related to key topics which are new components and/or have heightened focus under BHSA, including:
 - Crisis services and diversion and alternatives to emergency departments and jails
 - Housing interventions
 - Substance use disorder treatment and recovery services
 - Behavioral Health workforce modernization – *sessions 12/03/2025*
 - Early intervention for youth and young adults – *sessions 12/09/2025*

Today's Key Questions



LIVE WELL
SAN DIEGO

1. What supports or workflows would help your clinics/centers identify rising BH needs earlier and link patients more effectively to specialty BH care?
2. What improvements could we explore as a BHP to help make referrals from your clinics/centers to specialty behavioral health care smoother?
3. What training or tools would help your staff better identify and connect patients needing specialty behavioral health care?
4. Which populations you serve face the biggest barriers to entering specialty behavioral health care, and what supports would help improve access?
5. Anything else you would like to share with BHS for the BHSA Integrated Plan?

Key Recommendations from MCPs

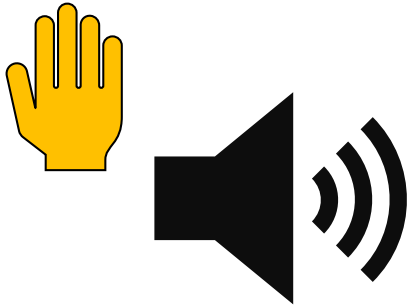


- Enhance member education and outreach, including clarifying roles, responsibilities, and accountability
- Implement dedicated care navigation roles
- Expand flexible, community-based services
- Establish interoperable data systems and real-time information sharing between MCPs and BHP, centralizing ECM and CS where feasible
- Formalize collaborative structures and communication channels for joint problem solving and joint learning

Ways to Engage



During today's input session, there are multiple ways to share your thoughts and recommendations:



Raise Hand & Unmute



Zoom Chat



Mentimeter

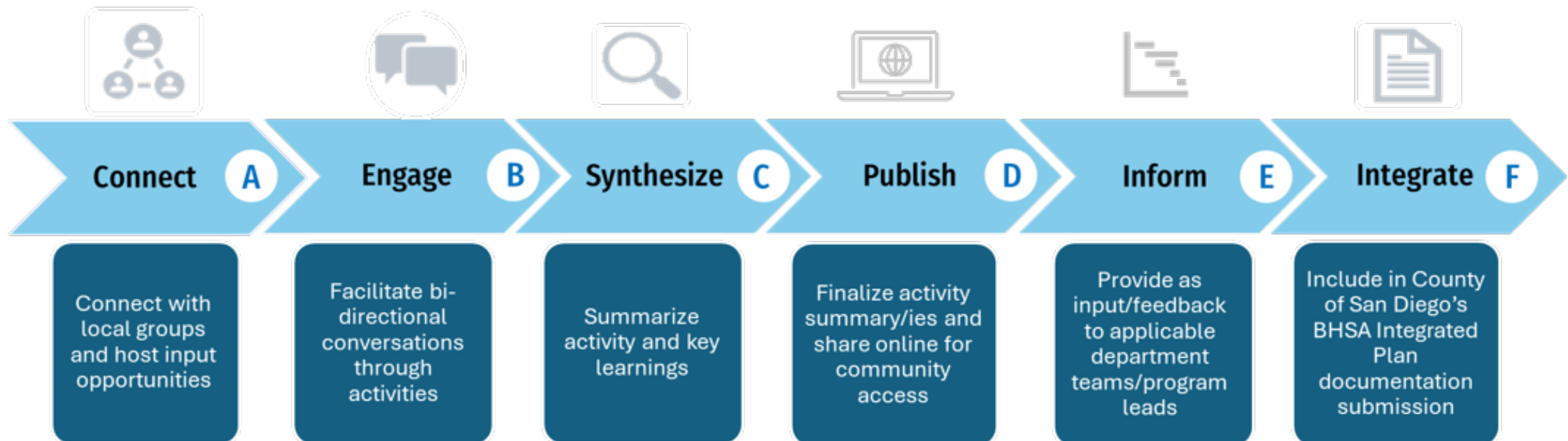
Next Steps



LIVE WELL
SAN DIEGO

How is info from CPP input sessions being utilized by the department?

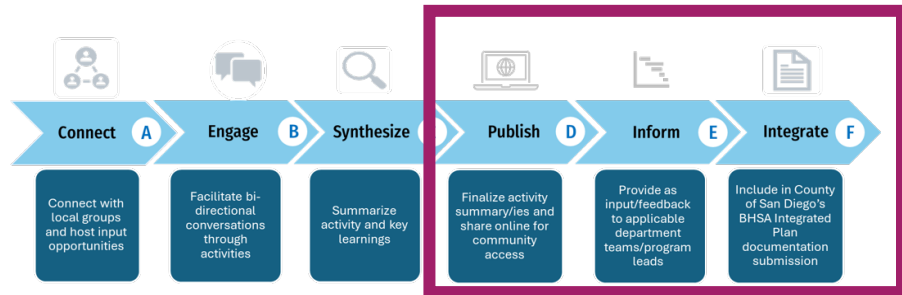
Input will inform specialty mental health and substance use disorder treatment services priorities, investments, and recommendations included in the first BHSA Integrated Plan scheduled for presentation to the San Diego County Board of Supervisors in Summer 2026.



Activity Summaries



LIVE WELL
SAN DIEGO



County of San Diego Health and Human Services Agency - Behavioral Health Services

BHS Housing Council Input Session Engagement Summary

Overview: This report summarizes the Thursday, May 1, 2025, input session between the County of San Diego Housing Council, Behavioral Health Services (BHS), housing stakeholders, and community members, examining how the Behavioral Health Services Act (BHSA) will shape housing policies.

Section	Details
Engagement Title	Housing Council Listening Session
Format	<input checked="" type="checkbox"/> In-Person <input type="checkbox"/> Virtual <input type="checkbox"/> Hybrid
Date	Thursday, May 1, 2025
Time	10:30 AM-11:30 AM
Location	County of San Diego Housing and Community Development Services (HCDS), 3899 Bollen Rd, San Diego, CA, 92123
Activity Details	60-min discussion: <ul style="list-style-type: none">Nearly 40 attendees4 discussion questions200+ comments received:<ul style="list-style-type: none">153 comments submitted through Mentimeter40 comments through open discussion
Participation	

Summary of Engagement Activity

On May 1, 2025, the County of San Diego Behavioral Health Services (BHS), in collaboration with the University of California, San Diego (UCSD) Health Partnership, hosted a listening session during the BHS Housing Council Retreat at the San Diego County Housing and Community Development Services (HCDS) building. The Housing Council provides guidance on the design, implementation, and evaluation of housing interventions to address the behavioral health needs of individuals at risk of or experiencing homelessness or housing insecurity. This session was designed to gather early input to inform the development of the County's first Behavioral Health Services Act (BHSA) Integrated Plan and input session questions were formulated based on prior input and work of the Council, including the 2022-2027 Strategic Housing Plan.

Approximately 40 participants attended the retreat, including the Council's 10 voting members and representatives from community-based organizations, housing developers, advocacy groups, and government and non-government agencies.

Participating organizations included:

- National CORE
- Alpha Project
- Vista Hill
- Corporation for Supportive Housing (CSH)
- Legal Aid Society
- Jewish Family Services of San Diego
- Mobile Crisis Response Team (MCRT) Exodus Recovery
- San Diego Housing Commission (SDHC)
- Clavinda
- Wakeland Housing and Development Corporation
- Housing Innovation Partners (HIP)

10/09/2025 1

Key Learnings

- Rigid Policies Create Barriers to Stable and Accessible Housing**
Barriers include eligibility rules, funding limits, and a mismatch of services when complex health needs exist. Eligibility rules like Coordinated Entry Systems (CES) matching, Housing and Urban Development restrictions, and felony exclusions all prevent access. Funding limits further narrow eligibility: for example, Supplemental Security Insurance (SSI) excludes board and care for high-need individuals. Service mismatch makes housing waits too long for clients with specialized care needs that require access to Assertive Community Treatment (ACT), and Full-Service Partnership (FSP).

Audience Recommendations

- Dedicate Funding for Capital Development**
Participants recommended the County dedicate the full 25% allowable under the BHSA 30% Housing Intervention Component to capital development projects. Maximizing this investment would be essential to expand the supply of Permanent Supportive Housing (PSH) and meet needs of individuals with serious behavioral health conditions at risk or experiencing homelessness. Recapitalization of "No Place Like Home," in collaboration with County Housing and Development Services was also suggested.

- Activity Summaries approved by BHAB on 09/04/25
- Overview of activity, participants, discussion(s) held, including questions proctored
- Three primary uses once finalized

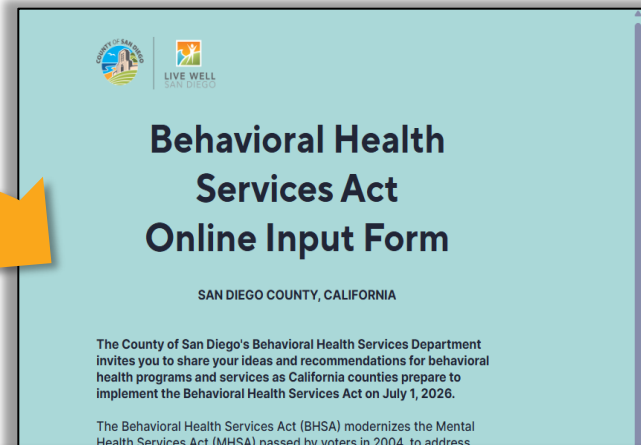
Have Additional Input?



Visit our BHSa website!



SCAN ME



Community Planning

BHSA requires counties to look at their whole behavioral health system of care through a formal Community Planning Process (CPP). The CPP supports the County of San Diego's goal to involve communities in meaningful conversations and decision-making about local behavioral health services to ensure programs reflect their unique needs and voices.

Sign Up to Receive Updates

By providing your information, you are signing up to receive key information about the BHSA and updates about opportunities to provide input to help inform the BHSA Integrated Plan for Fiscal Years 2026–2029.

Share Input via Our Online Form

Access this online form to share insights and recommendations with BHS to help guide the development of San Diego County's first BHSA Integrated Plan for Fiscal Years 2026–2029.

Join Us in Upcoming Activities

View upcoming and past engagement activities hosted by the department, including community workshops, town halls, and input opportunities to help inform the BHSA Integrated Plan for Fiscal Years 2026–2029.

What about BHSA would you like to provide input on?

- Select from the list below to populate response boxes:
- ☐ Behavioral Health Services and Supports (BHSS) component
 - ☐ BHSS: Workforce Education and Training
 - ☐ BHSS: Early Intervention
 - ☐ Full Service Partnerships (FSP) component
 - ☐ Substance Use Disorder (SUD) Services
 - ☐ Housing Interventions component
 - ☐ Communities Most Impacted
 - ☐ Other

About You

Please share a little about yourself to help us understand who we heard from.

Which of the following best describes you and/or the agency or organization you represent? *

(Mark all that apply)

- ☐ Adult or older adult with lived mental health or substance use experience
- ☐ Youth or young adult with lived mental health or substance use experience
- ☐ Family member of someone with lived mental health or substance use experience
- ☐ Mental health, substance use, or social services provider
- ☐ Public or government agency

Stay Connected



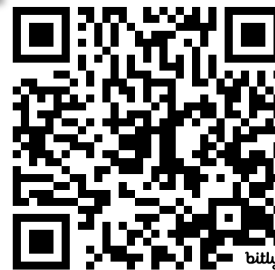
LIVE WELL
SAN DIEGO

Upcoming Engagement Opportunities

Planned Engagement Activities

Past Activity Materials

SCAN ME



Contact Us

Communication & Engagement Unit: Engage.BHS@sdcounty.ca.gov



RFI Opportunity



LIVE WELL
SAN DIEGO

Request for Information (RFI): Supporting Local Organizations to Deliver Medi-Cal Behavioral Health Services

About this RFI

The County of San Diego is gathering input on how to better support local organizations in delivering Medi-Cal behavioral health services. Input will help identify barriers to Medi-Cal certification, highlight education and capacity-building needs, strengthen coordination with Medi-Cal Managed Care Plans, improve navigation and care transitions, and inform planning to grow the behavioral health workforce and strengthen the overall system.

RFI Virtual Meeting

December 1st, 2025 at 11:00AM PST

[Registration link](#)

RFI Attachments



RFI12883

[Click to view attachments](#)

Start Date:

Wed 11/12/25 at 8:00 AM PST

End Date:

Mon 12/15/25 at 5:00 PM PST



[Click to View
on BuyNet](#)

Contact DPC Buyer

Joseph Craft
Procurement Contracting Officer

Email:

Joseph.Craft@sdcounty.ca.gov

Cell: (858) 833-0145

Thank You!



LIVE WELL
SAN DIEGO

Request for Information (RFI):

Supporting Local Organizations to Deliver Medi-Cal Behavioral Health Services

About this RFI

The County of San Diego is gathering input on how to better support local organizations in delivering Medi-Cal behavioral health services. Input will help identify barriers to Medi-Cal certification, highlight education and capacity-building needs, strengthen coordination with Medi-Cal Managed Care Plans, improve navigation and care transitions, and inform planning to grow the behavioral health workforce and strengthen the overall system.

RFI Virtual Meeting

December 1st, 2025 at 11:00AM PST

[Registration link](#)

RFI Attachments



RFI 12883

[Click to view attachments](#)

Start Date:

Wed 11/12/25 at 8:00 AM PST

End Date:

Mon 12/15/25 at 5:00 PM PST



[Click to View
on BuyNet](#)

Contact DPC Buyer

Joseph Craft
Procurement Contracting Officer

Email:

Joseph.Craft@sdcounty.ca.gov


Cell: (858) 833-0145

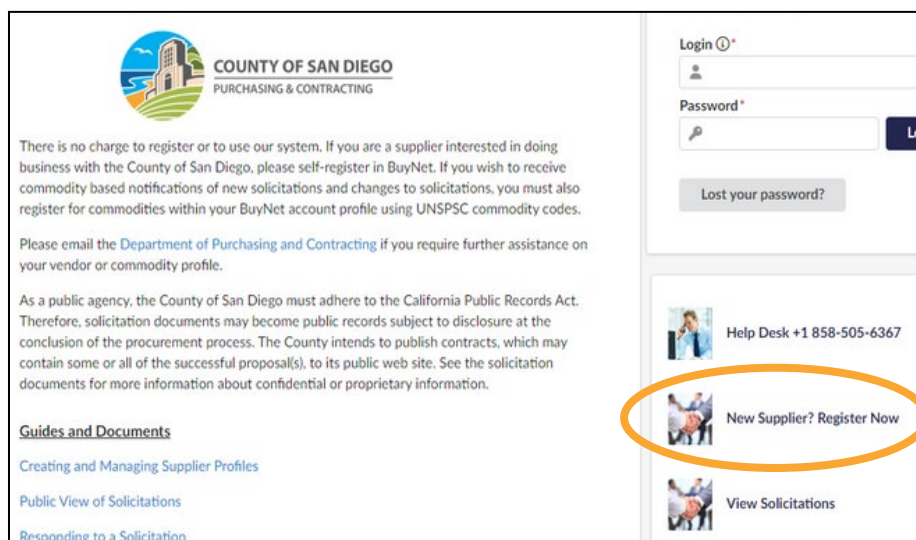
Create a BuyNet Account

New to BuyNet?

[Click to View Guide](#)

Register as a New Supplier on BuyNet [here](#).

- ✓ Complete Onboarding Process
- ✓ Successful Supplier registration screen will display a  green check mark
- ✓ Click 'Go Back' to login and log into account



COUNTY OF SAN DIEGO
PURCHASING & CONTRACTING

There is no charge to register or to use our system. If you are a supplier interested in doing business with the County of San Diego, please self-register in BuyNet. If you wish to receive commodity based notifications of new solicitations and changes to solicitations, you must also register for commodities within your BuyNet account profile using UNSPSC commodity codes.

Please email the [Department of Purchasing and Contracting](#) if you require further assistance on your vendor or commodity profile.


As a public agency, the County of San Diego must adhere to the California Public Records Act. Therefore, solicitation documents may become public records subject to disclosure at the conclusion of the procurement process. The County intends to publish contracts, which may contain some or all of the successful proposal(s), to its public web site. See the solicitation documents for more information about confidential or proprietary information.

[Guides and Documents](#)

[Creating and Managing Supplier Profiles](#)

[Public View of Solicitations](#)

[Responding to a Solicitation](#)

Login 

Password *

[Lost your password?](#)

[Help Desk +1 858-505-6367](#)

[New Supplier? Register Now](#)

[View Solicitations](#)