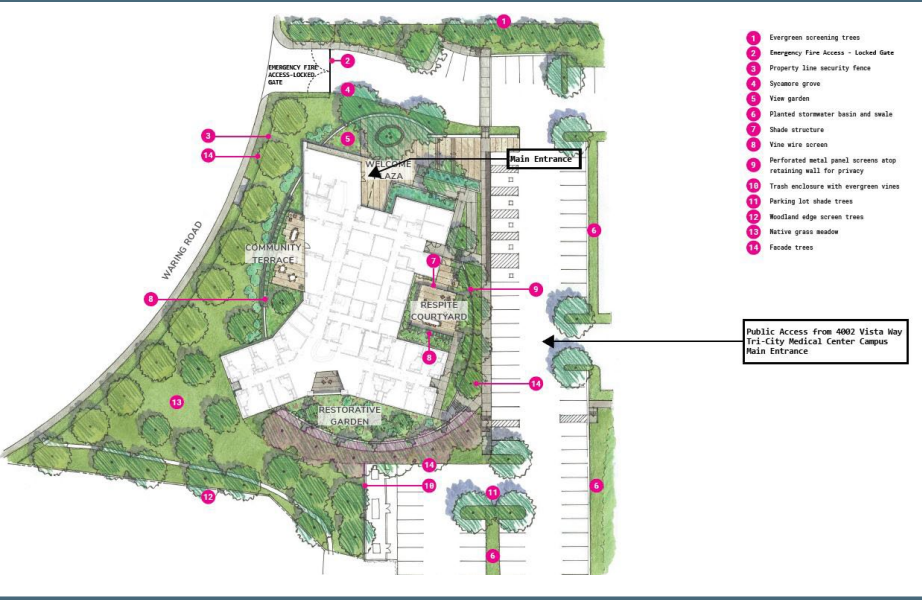


# COUNTY OF SAN DIEGO & TRI-CITY HEALTHCARE DISTRICT NEW MENTAL HEALTH FACILITY



## NEW MENTAL HEALTH FACILITY

The County of San Diego (County) and Tri-City Healthcare District (Tri-City) are partnering to build a modern, state of the art facility on the Tri-City campus in Oceanside to provide essential mental health services to the North San Diego County community.

### DESCRIPTION

Unlike outpatient services where clients may come and go daily, this facility will provide short-term services for clients requiring inpatient care, with an average length of stay of 5-7 days.

### RIGHT SERVICE, RIGHT PLACE, RIGHT TIME

The 16-bed capacity offered by the new facility will alleviate pressures on local hospitals and emergency rooms by referring clients with mental health needs to the appropriate treatment setting and will ensure that people in need of specialized care receive the right service in the right place at the right time.

### COLLABORATIVE PARTNERSHIP

Built on the expertise of local healthcare leaders and other stakeholders, this project is being developed through a unique, collaborative partnership with Tri-City to ensure there is adequate capacity to care for residents in North San Diego County. Additionally, this project is a key component of building a transformative continuum of behavioral health care services in San Diego County.

### TIMELINE

Construction of the new facility began in winter 2022 and is slated to be completed by spring 2024, with services beginning in Fiscal Year 2024-2025.



LIVE WELL  
SAN DIEGO



Tri-City Medical Center

# COUNTY OF SAN DIEGO & TRI-CITY HEALTHCARE DISTRICT NEW MENTAL HEALTH FACILITY

## FREQUENTLY ASKED QUESTIONS

### **Q: Will there be an increase in foot traffic in the neighborhood?**

**A:** There is no anticipated increase in foot traffic as clients will be routed through the main vehicle access points to the Tri-City Medical Center campus on Vista Way and Thunder Drive, and this is not an outpatient facility where clients would come and go daily.

### **Q: Will there be an increase in vehicle traffic?**

**A:** There is no anticipated increase in vehicle traffic. Clients will be admitted directly to the PHF via appropriate medical provider transportation, including emergency vehicles entering through the main vehicle access points to the Tri-City Medical Center's campus on Vista Way and Thunder Drive.

### **Q: What will be the aesthetics of the new building?**

**A:** The facility is being thoughtfully designed and promises to be an architectural asset that sets a standard for mental health care environments.

### **Q: Will there be a security service?**

**A:** As this facility is on the existing Tri-City Medical Center campus, there will be full security in accordance with existing and established protocols.

### **Q: Who will this facility serve?**

**A:** The facility will serve clients who need higher level psychiatric care than can be provided in an outpatient setting.

### **Q: How will clients arrive at the facility?**

**A:** Patients requiring short-term, inpatient treatment at the PHF will be referred to and directly admitted to the facility from local Crisis Stabilization Units (CSUs) and emergency rooms. Clients will arrive at the facility via appropriate medical provider transportation, including emergency vehicles.

### **Q: How can the facility be accessed?**

**A:** Access to the facility will be through the main vehicle and pedestrian access points to the Tri-City Medical Center campus on Vista Way and Thunder Drive. There will not be access through the adjacent neighborhoods. A fire access road will join Waring Road to the west and a locked gate will prevent vehicular and pedestrian traffic onto Waring Road.

### **Q: What happens to clients when they are released from the facility?**

**A:** After a short-term stay, clients will be connected to appropriate community-based care that best meets their unique needs. Services at the facility are designed to be seamlessly coordinated so that clients are fully supported and are proactively transitioned to the next appropriate level of care.

