

COUNTY OF SAN DIEGO



HEALTH & HUMAN SERVICES AGENCY: OFFICE OF THE PUBLIC ADMINISTRATOR, PUBLIC GUARDIAN & PUBLIC CONSERVATOR

BEHAVIORAL HEALTH ADVISORY BOARD PRESENTATION

Mark Sellers, L.M.F.T., Director

Beth Olin, L.C.S.W., Manager





ONE APPOINTEE, THREE HATS...



- Appointed by the Chief Administrative Officer
- Staff of 54 people
- Budget: \$7.6M (FY 2017-2018)
- Revenue: \$3.6M
 - Public Conservator: \$2.5M (Mental Health \$)
 - PA/PG: \$1.0M (fees)
- Net County Cost: \$4.0M
- Organizational Chart – handout



- Public Administrator: CA Gov Code 24000(l) & 27440
- Public Guardian: CA Gov Code 24000(w) & 27430
- Public Conservator: CA Welf & Inst. Code 5351



PUBLIC ADMINISTRATOR

- Investigates and administers estates of persons who die without wills or without a person willing/able to act as administrator
- Duties of PA :
 - Prior to appointment of personal representative, protects property from waste, loss or theft
 - Makes funeral and burial arrangements (Health and Safety Code 7100)
 - Indigent Burial/Cremation Program & Fund
 - Handles all aspects of estate administration (same as private administrators)



TYPICAL PA CASES INVOLVE:

- Unclaimed or discovered body
 - Relationship with ME important
- Unknown Assets
 - Often need protection quickly
- Unknown/Indisposed Heirs
 - Often need vetting
- **Data (FY 17/18)**
 - **1,103 referrals**
 - Appointed or Directly Handled = 293
 - 192 = Summary Probate; 9 = Formal Probate
 - Indigent Cremation/Burial = 462



PUBLIC GUARDIAN

- **Probate Code Section 2920:** “No one else who is qualified and willing to act” AND “in the best interests of the person”
 - PG “shall apply” for appointment if “imminent threat” to health, safety or person’s estate
 - PG “may apply” for appointment “in all other cases”
 - PG “shall apply” if the court so orders PG to apply
- **Probate Code Section 1800.3:** There are no less restrictive alternatives
 - Accepting assistance? Advanced planning? DPOA? Health and Safety Code Section 1418.8?
- **Probate Code Sections 2900 and 2910:** Special powers prior to appointment (possession or control of real or personal property subject to loss, waste, etc.)

TYPICAL PG CASES INVOLVE:

- Referrals from APS
- Few friends or family
- Major neurocognitive issues
- Abuse, Scams and Theft
 - Family, friends often the suspected abusers
- Data (FY 17/18)
 - 172 new referrals (average = 14/month)
 - Open Caseload Average = 92 conservatees





PUBLIC CONSERVATOR

- **LANTERMAN-PETRIS-SHORT (LPS) ACT:**

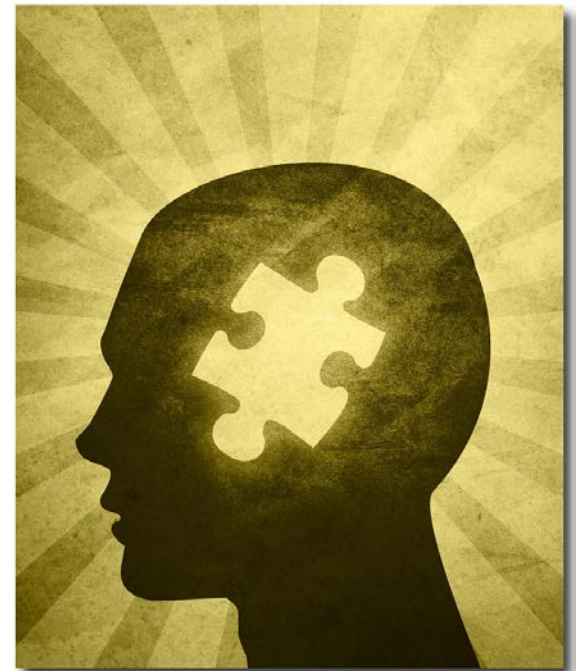
Addresses community mental health services (W&I Code sections 5000-5550)

- **“GRAVELY DISABLED” CRITERIA:**

- Person has a mental health disorder or chronic alcoholism, and
- Person cannot provide for his or her basic personal needs for food, clothing or shelter, and
- Family/others not able or willing to meet these needs

TYPICAL PC CASES INVOLVE:

- Person detained in psychiatric setting
- Won't accept treatment, assistance
- Investigators must produce report with recommendation to the court
- Some also face criminal charges/can be incarcerated while investigation underway
- **Data (FY 17/18)**
 - **511 new investigations (42/month)**
 - **Year-end Open Caseload = 1,116 conservatees**

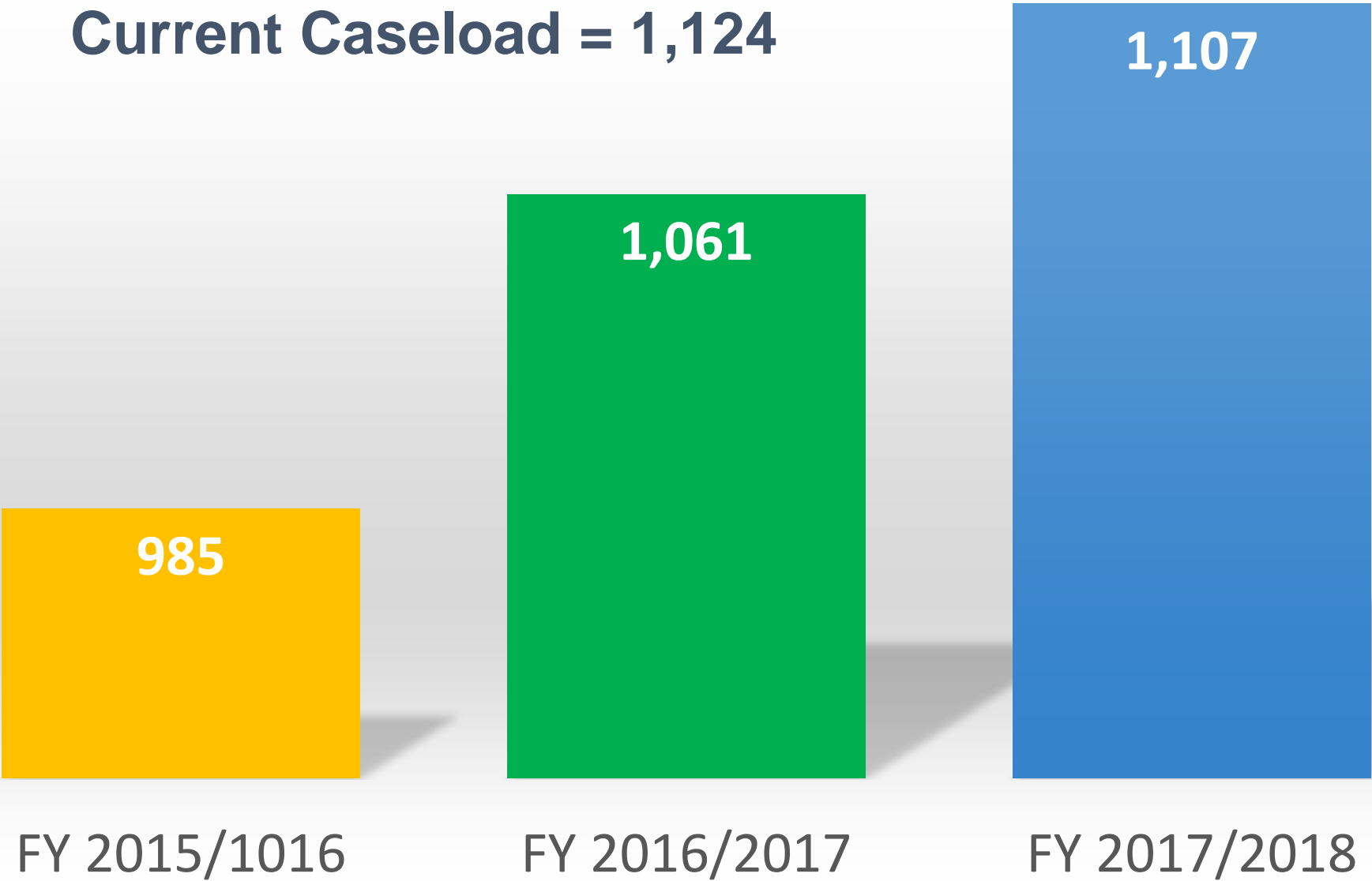


AVERAGE NUMBER OF CONSERVATEES



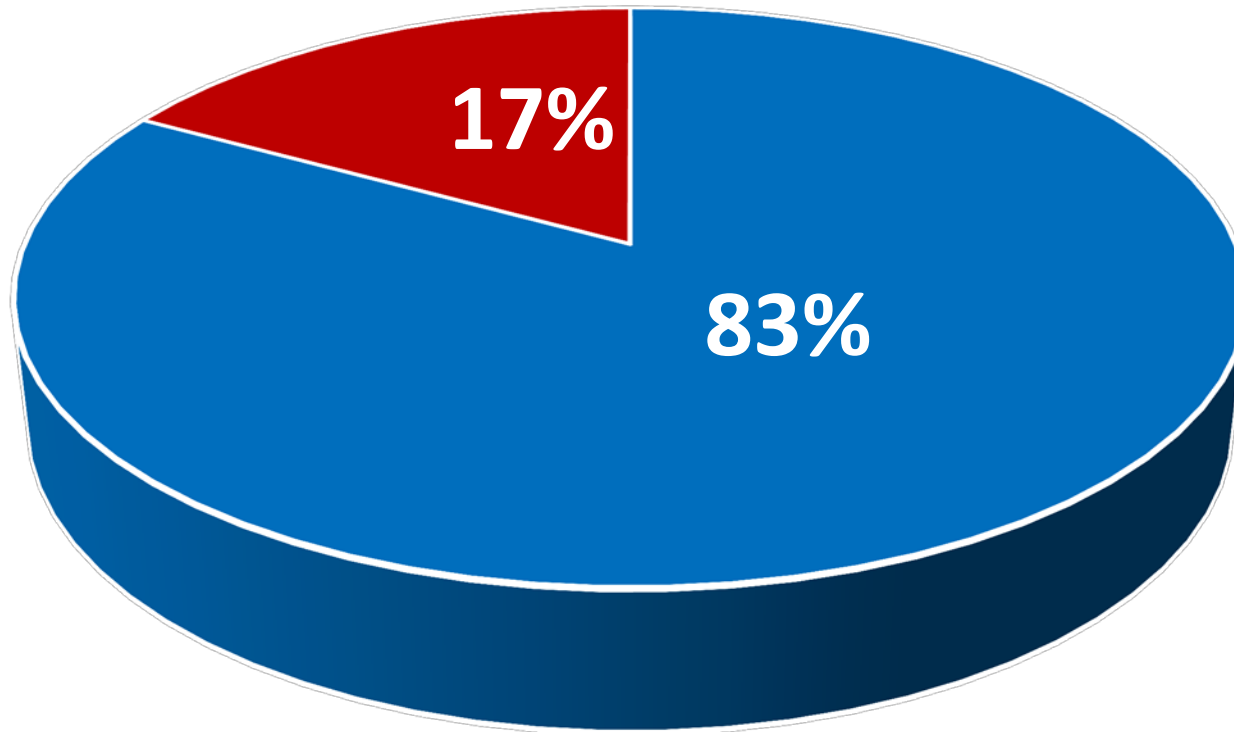
LIVE WELL
SAN DIEGO

Current Caseload = 1,124





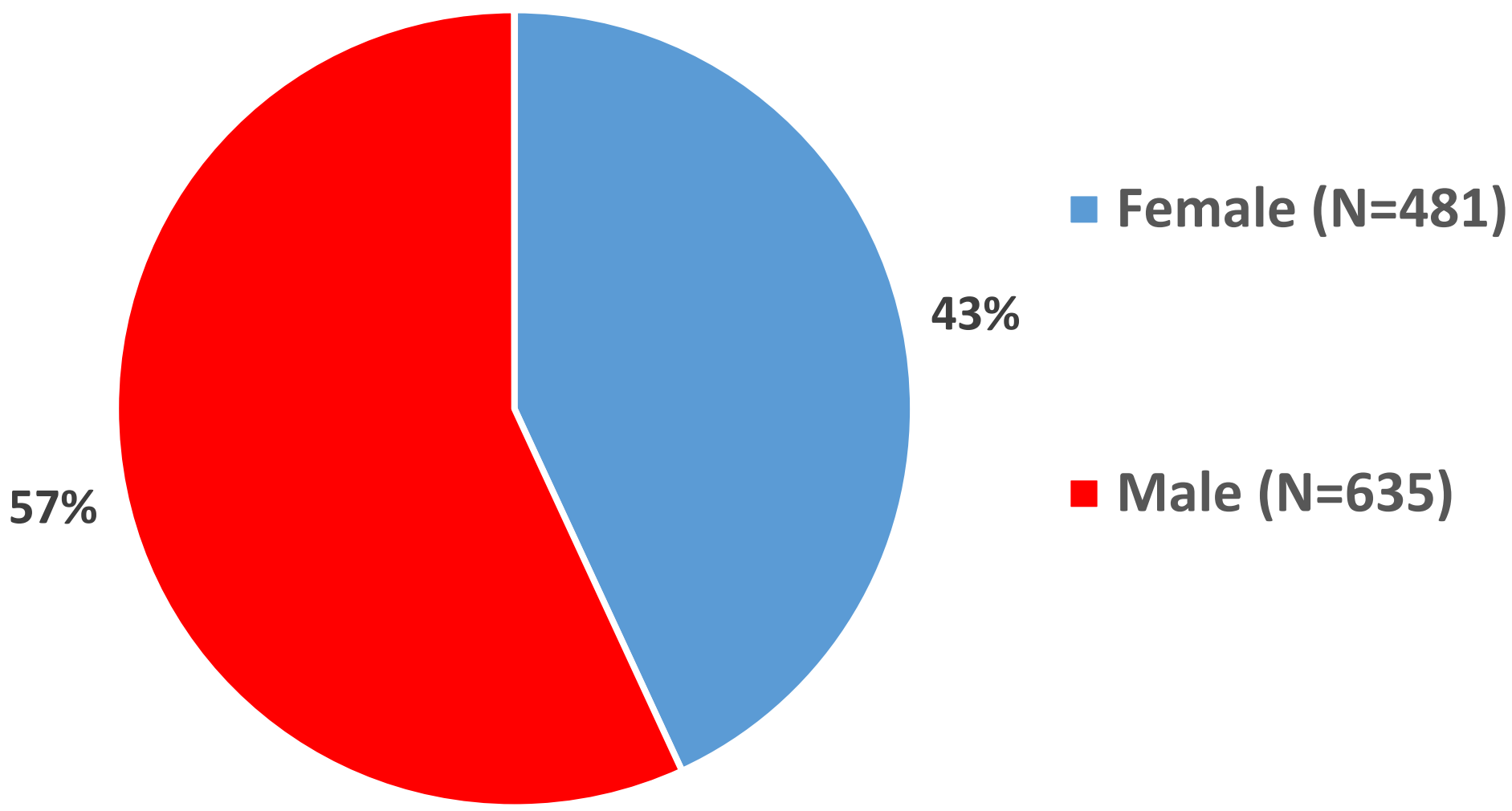
■ Public Conservator ■ Private Conservator



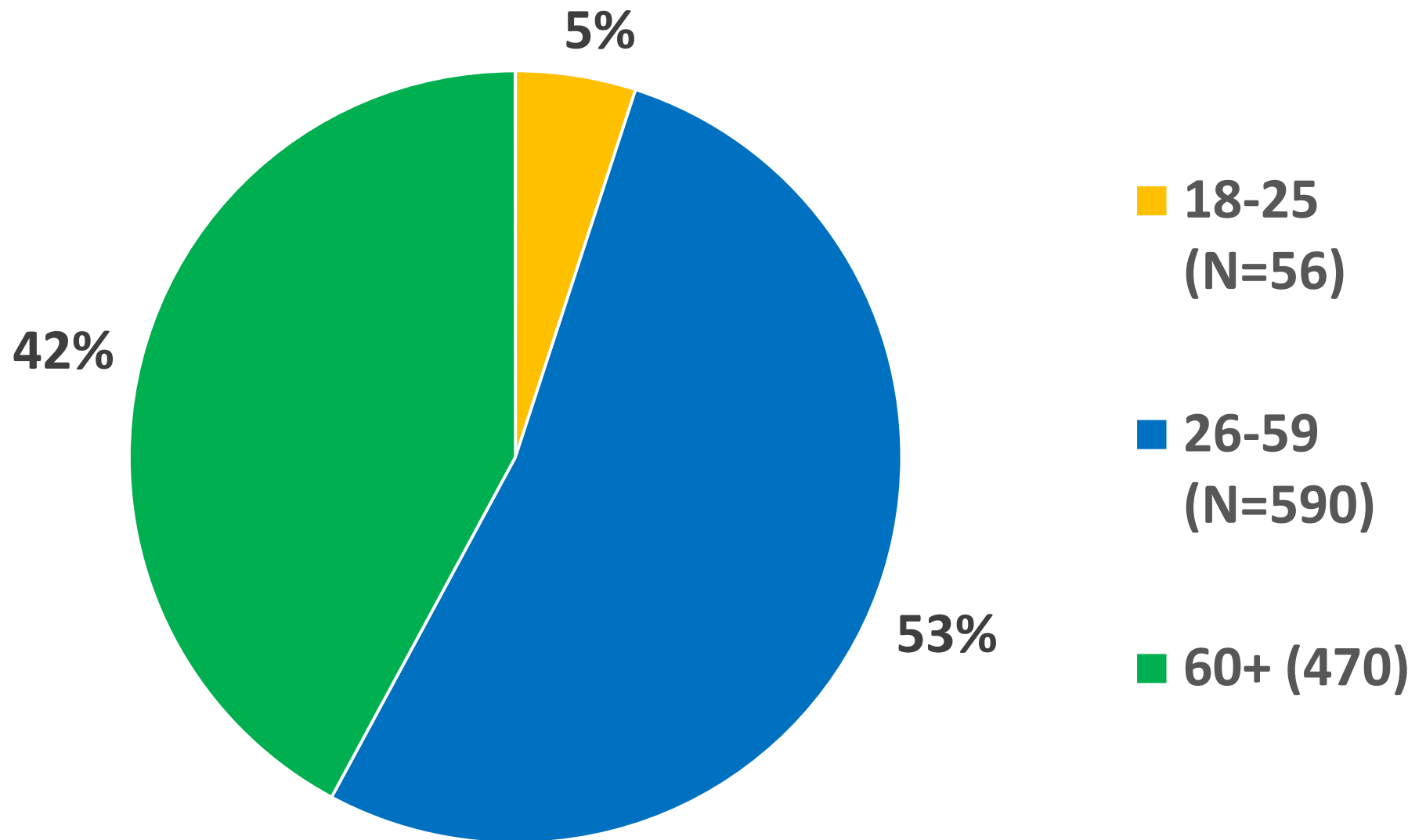
PUBLIC CONSERVATOR CLIENT GENDER



LIVE WELL
SAN DIEGO



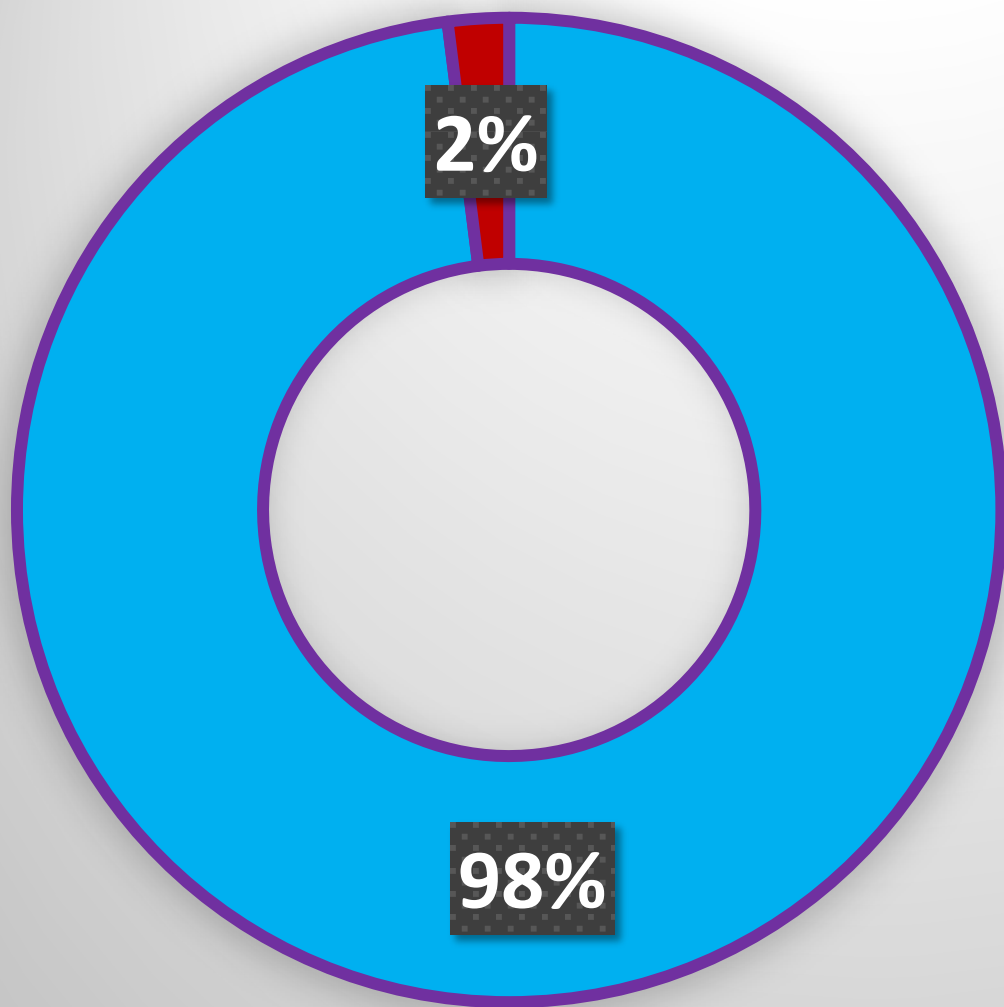
PUBLIC CONSERVATOR AGE GROUPS



LPS VS. MURPHY CONSERVATORSHIP



LIVE WELL
SAN DIEGO

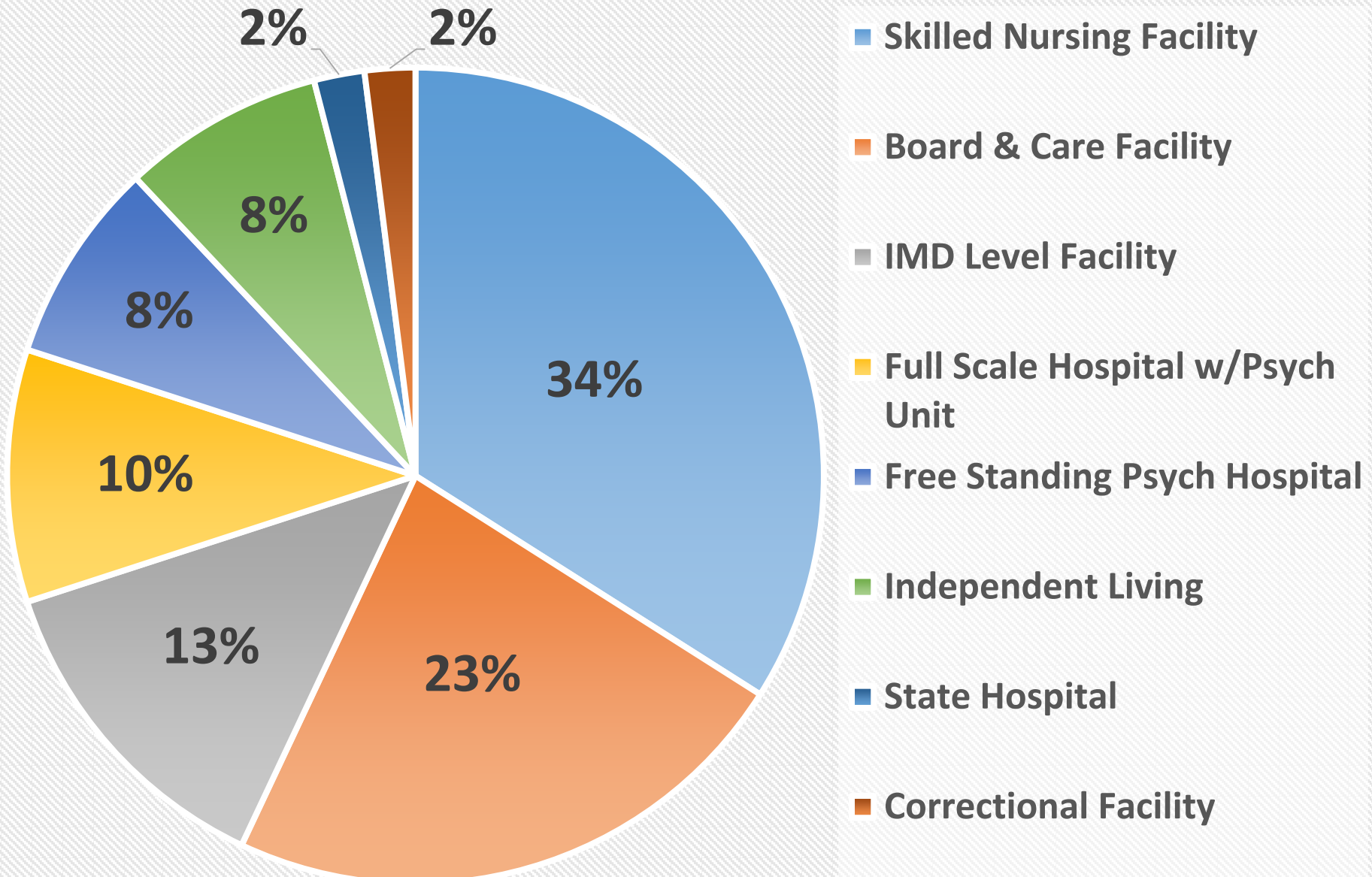


-  **LPS
Conservatorship**
-  **Murphy
Conservatorship**

PUBLIC CONSERVATOR PLACEMENT



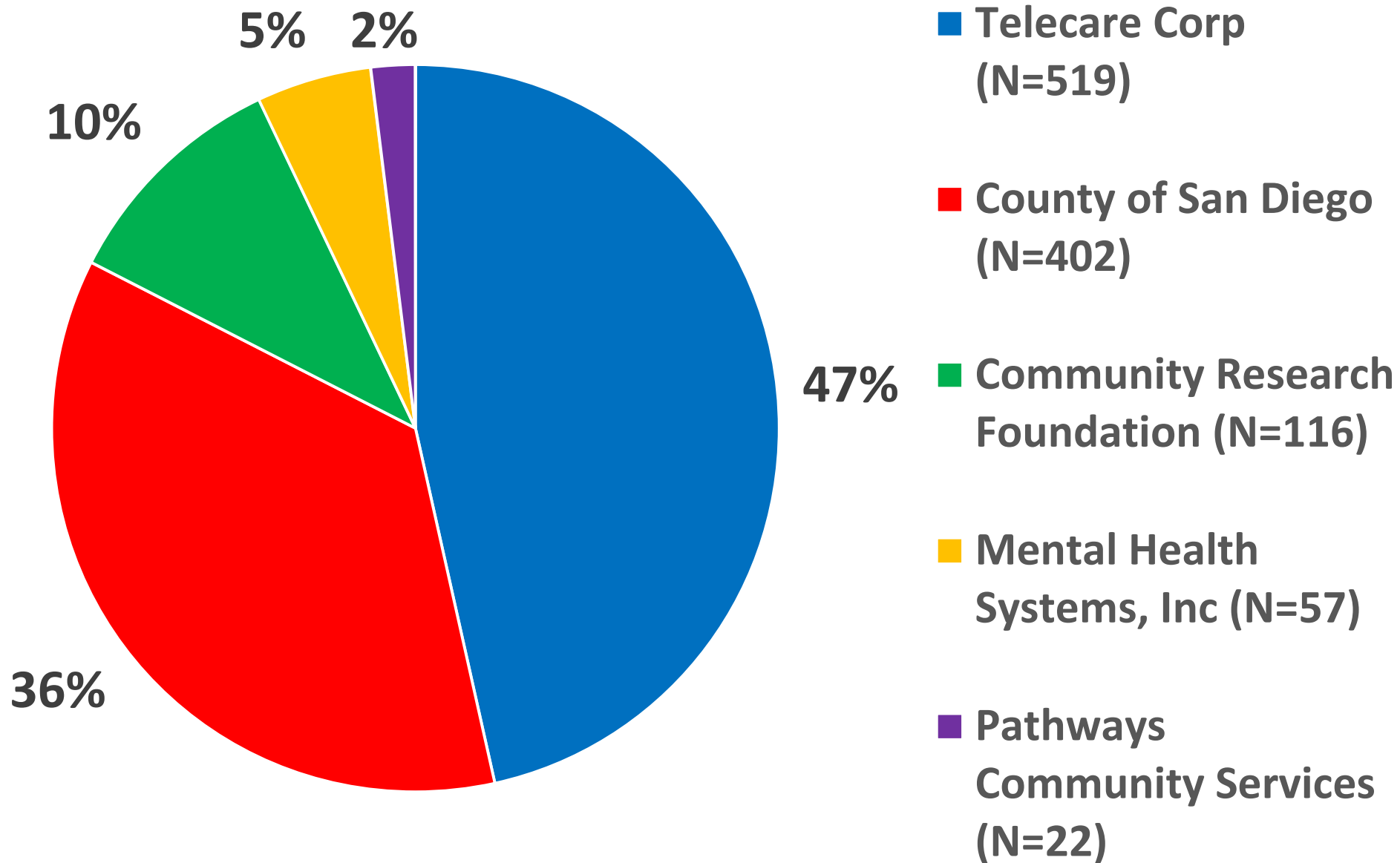
LIVE WELL
SAN DIEGO



PUBLIC CONSERVATOR CASE MANAGEMENT



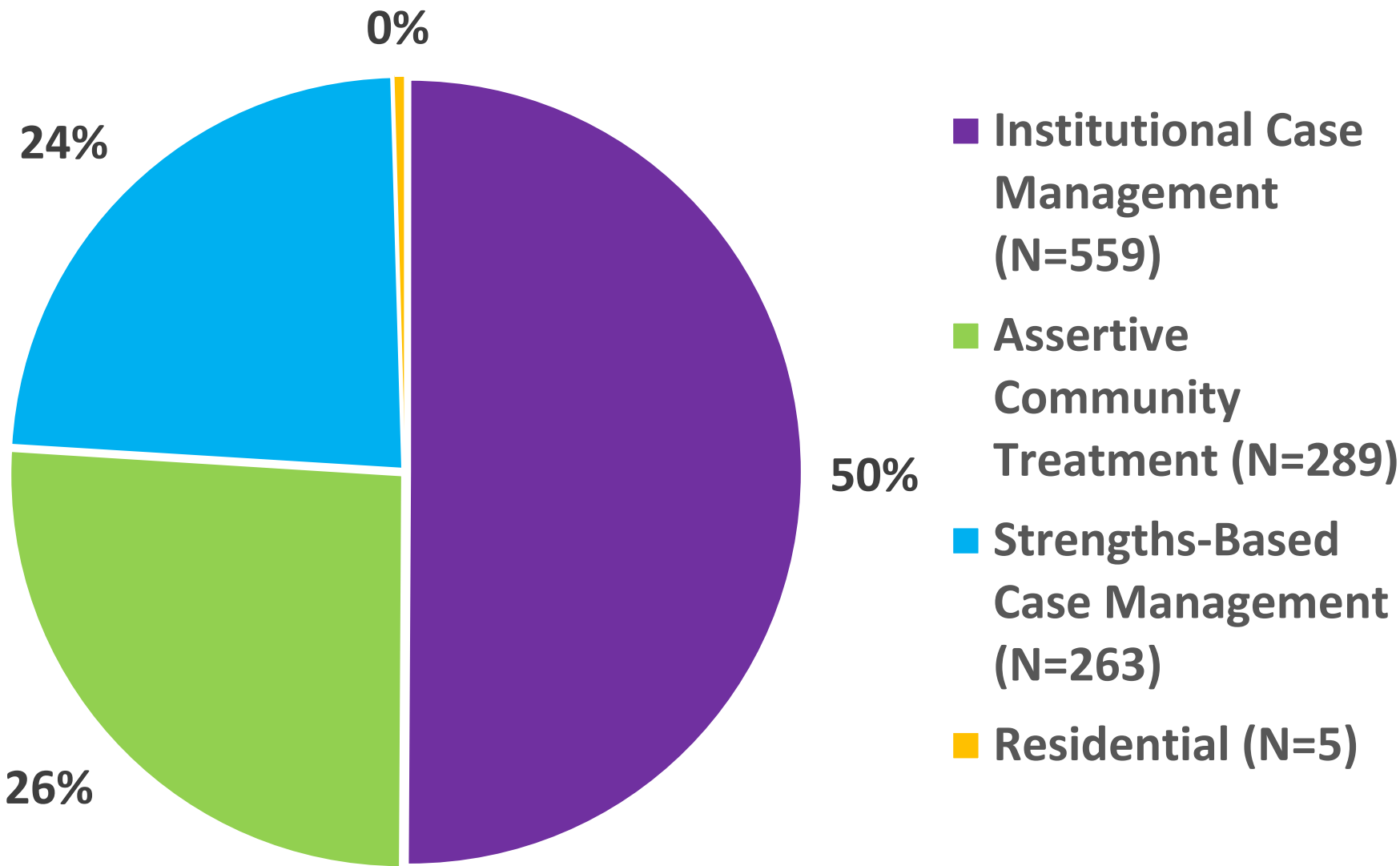
LIVE WELL
SAN DIEGO



PUBLIC CONSERVATOR MODELS OF CASE MANAGEMENT



LIVE WELL
SAN DIEGO





- **Penal Code 1370 (Incompetent to Stand Trial or “IST”) Process Reform**
 - ❖ **Trauma Informed**
 - ❖ **State Hospital PC 1370 Reports to Public Conservator Office**
 - ❖ **Enhanced/Improved Key Stakeholder Coordination**
(i.e., State Hospital, Superior Court, District Attorney, etc.)
 - ❖ **Forensic Psychologist (TEP) hired September 2018**
- **County Case Management for Regional Center Conservatees**
- **OPOH Updates/Enhancements**
- **Case Management Training Material Updates (in process)**
- **Legislative Changes: SB 1045, SB 1187, etc.**

HOW TO CONTACT US



LIVE WELL
SAN DIEGO

BEST WAY TO REQUEST HELP/INVESTIGATION:

- **www.papgpc.org**
 - ✓ Site provides information/links to request PA and PG investigations and information on PC
- **Contact PA/PG/PC office at (858) 694-3500 to consult or request additional information**

