

POLINSKY CHILDREN'S CENTER



The A.B. and Jessie Polinsky Children's Center (PCC) is a 24 hour temporary shelter care facility operated by the County of San Diego Health and Human Services Agency. Opening its doors on October 6, 1994, PCC provides emergency, trauma informed care for children, ages birth to 18 years, who have been separated from their families when their safety and well-being are a concern and/or their basic needs are not being met.

PCC, licensed by the California Department of Social Services, offers safe housing in a friendly, healing environment, which includes six "home-like" residential cottages, an infant nursery, a cafeteria, gymnasium, playground, swimming pool, athletic field, basketball courts, weight room, medical clinic, and an on-site school. Services focus on the child's safety and meeting the child's immediate physical, emotional, social and spiritual well-being while return to the family or other placement options are assessed.

Attentive staff work diligently to provide a comprehensive assessment of the child, identify viable placement options for the child, and transition the child to an appropriate setting within ten days if possible.



POLINSKY CHILDREN'S CENTER

Child Welfare Services

Health and Human Services Agency
County of San Diego

9400 Ruffin Court, San Diego, CA 92123
MAIN (858) 514-4600 FAX (858) 874-1164

COUNTY BOARD OF SUPERVISORS

Greg Cox - District 1
Dianne Jacob - District 2
Kristin Gaspar - District 3
Ron Roberts - District 4
Bill Horn - District 5

CHIEF ADMINISTRATIVE OFFICER

Helen Robbins-Meyer

HEALTH AND HUMAN SERVICES AGENCY

DIRECTOR

Nick Macchione

CHILD WELFARE SERVICES

DIRECTOR

Cathi Palatella

POLINSKY CHILDREN'S CENTER

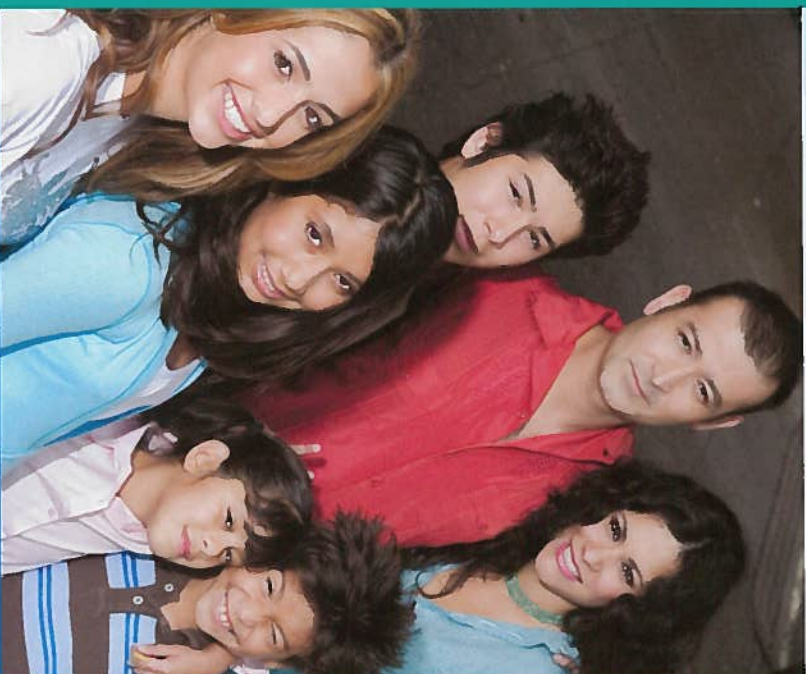
DIRECTOR

Connie Cain

Questions or comments?

(858) 514-4600

A.B. and Jessie Polinsky Children's Center



Providing emergency shelter and support services
to children and youth since October 6, 1994



COUNTY OF SAN DIEGO



HEALTH AND HUMAN SERVICES AGENCY



LIVE WELL
SAN DIEGO

To learn more about Live Well San Diego, visit LiveWellSD.org



TRAUMA INFORMED CARE ASSESSMENT SERVICES AND TRANSITION

Trauma-informed Care balances between competence and kindness in the delivery of services and interactions, and ensures services are delivered so as to minimize the risk of re-traumatizing individuals and/or families, by understanding that recovery is possible for everyone, promoting stronger coordination of care and services, based on the needs and choices of the client partner/customer.

As a trauma informed Agency, PCC staff receive the best training to support the children throughout what could be one of the most difficult times in the their family's life. The staff are able to understand and meet the needs of our unique population through trauma informed practice.

PCC's 23 Hour Assessment Center offers children taken into protective custody a safe and comfortable setting while social workers assess potential relatives, non-related extended family members and foster homes for immediate placement as an alternative to admitting the child to PCC.

When children are not able to be placed within 23 hours, timely and comprehensive medical and mental health assessments are completed through a public-private partnership of community organizations such as Rady Children's Hospital, UCSD Health Care Center and local mental health providers. The assessments ensure that children receive appropriate care, treatment and stabilization towards a safe return to their family or successful transition into a placement with relatives, a foster family or group setting as appropriate.

A thorough medical assessment verifies that the child is up to date on immunizations and has services in place or are coordinated to address current health conditions.

PCC provides mental health services through a multi-pronged approach including comprehensive assessment, individual and group therapy, care coordination with other agencies, psychiatry services, and transitional services to best meet the needs of the child.

A Developmental Screening and Enhancement Program (DSEP) supports a thorough developmental assessment of all children at PCC and coordinates services and support as appropriate.

Polinsky Children's Center staff teach children life-changing skills, help them build healthy relationships, empower them to make good decisions on their own and to care for themselves in a family-style environment while respecting their values and beliefs.

EDUCATION PROGRAM

Operated by the San Diego Unified School District, PCC's K-12 school meets the California State Standards and enables children, to continue their education while in residence. Children have access to laptop computers and are able to earn credit/hours on a daily basis. Support personnel include a site administrator, counselor, speech and language specialist and other designated instructional services personnel.

If it is not a safety risk and it is in the child's best interest to attend his or her school of origin, PCC staff are instrumental in coordinating transportation and logistics to maintain consistency in the child's education.



COMMUNITY PARTNERS AND VOLUNTEERS

Volunteers serve a critical role at PCC and in the lives of our County's children. Local community groups such as the PCC Auxiliary and Promises2Kids are dedicated to coordinating volunteers and providing direct services to children at PCC. Their support includes:

- bringing pet therapy to the campus
- funding a youth mentor program
- arranging fundraisers
- purchasing furniture, equipment, toys, clothing and other child-specific items

Please call the Promises2Kids Volunteer Line at (858) 427-1105 for more information to volunteer and/or to donate funds or in-kind items to PCC.