



# 2023 Map Atlas

## Chronic Kidney Disease



County of San Diego | Health and Human Services Agency | Public Health  
Services | Community Health Statistics Unit

October 2025

## Data Sources

**Death\*** is based on underlying cause of death among San Diego County residents.

Rates per 100,000 residents and rounded to integer. Starting with data year 2022, all rates based on events <20 are suppressed due to statistical instability. Events fewer than 11 are suppressed. Maps are only produced for conditions/outcomes with SRA-level rates. Some sections may have no maps.

Sources: California Department of Public Health, Center for Health Statistics, Office of Health Information and Research, Vital Records Business Intelligence System (VRBIS), 2023. San Diego Association of Governments (SANDAG) Population Estimates, 2023 (v1/2025). 2023 population estimates were derived from the 2020 decennial census.

\*For all opioid overdoses, COVID-19, heat illness/injury, hip fractures, and traumatic brain injuries, death rate is based on the multiple/contributing cause of death among San Diego County residents.

**Hospitalization** refers to treatment at a general acute care facility in San Diego County.

Rates per 100,000 residents and rounded to integer. Starting with data year 2022, all rates based on events <20 are suppressed due to statistical instability. Events fewer than 11 are suppressed. Maps are only produced for conditions/outcomes with SRA-level rates. Some sections may have no maps.

Sources: California Department of Healthcare Access and Information (HCAI), 2023 Patient Discharge Database. San Diego Association of Governments (SANDAG) Population Estimates, 2023 (v1/2025). 2023 population estimates were derived from the 2020 decennial census.

**Emergency Department (ED) Discharge** refers to treatment at an ED facility in San Diego County.

Rates per 100,000 residents and rounded to integer. Starting with data year 2022, all rates based on events <20 are suppressed due to statistical instability. Events fewer than 11 are suppressed. Maps are only produced for conditions/outcomes with SRA-level rates. Some sections may have no maps.

Sources: California Department of Healthcare Access and Information (HCAI), 2023 Emergency Department Discharge Database. San Diego Association of Governments (SANDAG) Population Estimates, 2023 (v1/2025). 2023 population estimates were derived from the 2020 decennial census.

**In-Patient Treatment** refers to treatment at a psychiatric care or chemical rehabilitation facility in San Diego County.

Rates per 100,000 residents and rounded to integer. Starting with data year 2022, all rates based on events <20 are suppressed due to statistical instability. Events fewer than 11 are suppressed. Maps are only produced for conditions/outcomes with SRA-level rates. Some sections may have no maps.

Sources: California Department of Healthcare Access and Information (HCAI), 2023 Patient Discharge Database. San Diego Association of Governments (SANDAG) Population Estimates, 2023 (v1/2025). 2023 population estimates were derived from the 2020 decennial census.

Maps & Analysis by County of San Diego, Health and Human Services Agency, Public Health Services, Community Health Statistics Unit. Contact 619.692.6672. October 2025.

[https://www.sandiegocounty.gov/hhsa/programs/phs/community\\_health\\_statistics/](https://www.sandiegocounty.gov/hhsa/programs/phs/community_health_statistics/)  
LiveWellSD.org.

For more detailed explanation of geography, methods, and sources, please refer to CHSU's [2023 Community Profiles Data Guide and Data Dictionary Dashboards](#).

# Table of Contents

Section 1: Deaths .....	1
Section 2: Hospitalization .....	3
Section 3: Emergency Department (ED) Discharge .....	10
Section 4: In-Patient Treatment (IPT) .....	14





# Section 1: Death

## *Death Rates Among San Diego County Residents by Demographic, 2023:*

- Total Rate
- Race/Ethnicity
  - Non-Hispanic Asian/Pacific Islander (API)
  - Non-Hispanic Black
  - Hispanic
  - Non-Hispanic White
- Age Group
  - 0-9 Years
  - 10-19 Years
  - 20-29 Years
  - 30-39 Years
  - 40-49 Years
  - 50-59 Years
  - 60-69 Years
  - 70-79 Years
  - 80+ Years



**No SRA-level rate  
data available for this  
section.**



## Section 2: Hospitalization

### *Hospitalization Rates Among San Diego County Residents by Demographic, 2023:*

- Total Rate
- Race/Ethnicity
  - Non-Hispanic Asian/Pacific Islander (API)
  - Non-Hispanic Black
  - Hispanic
  - Non-Hispanic White
- Age Group
  - 0-9 Years
  - 10-19 Years
  - 20-29 Years
  - 30-39 Years
  - 40-49 Years
  - 50-59 Years
  - 60-69 Years
  - 70-79 Years
  - 80+ Years

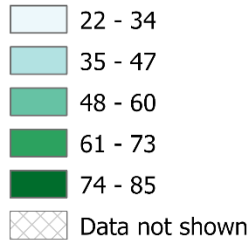


# Total Hospitalization Rates\* San Diego County, by Subregional Area, 2023



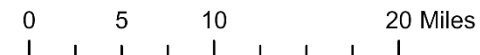
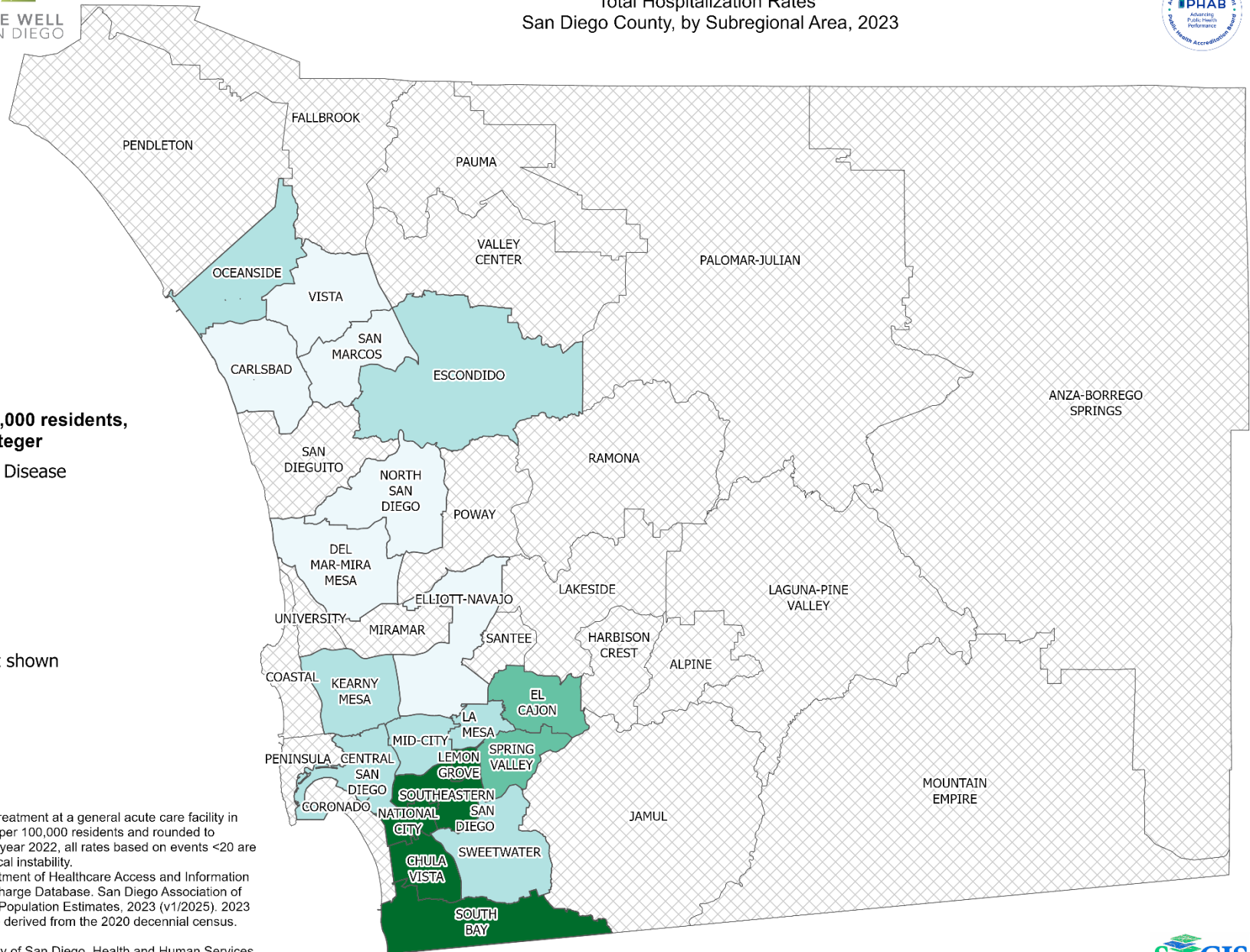
## Rates per 100,000 residents, rounded to integer

### Chronic Kidney Disease



\*Hospitalization refers to treatment at a general acute care facility in San Diego County. Rates per 100,000 residents and rounded to integer. Starting with data year 2022, all rates based on events <20 are suppressed due to statistical instability.  
Sources: California Department of Healthcare Access and Information (HCAI), 2023 Patient Discharge Database. San Diego Association of Governments (SANDAG) Population Estimates, 2023 (v1/2025). 2023 population estimates were derived from the 2020 decennial census.

Maps & Analysis by County of San Diego, Health and Human Services Agency, Public Health Services, Community Health Statistics Unit.  
Contact 619.692.6672. [https://www.sandiegocounty.gov/hhsa/programs/phs/community\\_health\\_statistics/LiveWellSD.org](https://www.sandiegocounty.gov/hhsa/programs/phs/community_health_statistics/LiveWellSD.org).  
September 2025.







# Hospitalization Rates Among Non-Hispanic Asian/Pacific Islander Residents\* San Diego County, by Subregional Area, 2023



## Rates per 100,000 residents, rounded to integer

### Chronic Kidney Disease

34 - 47

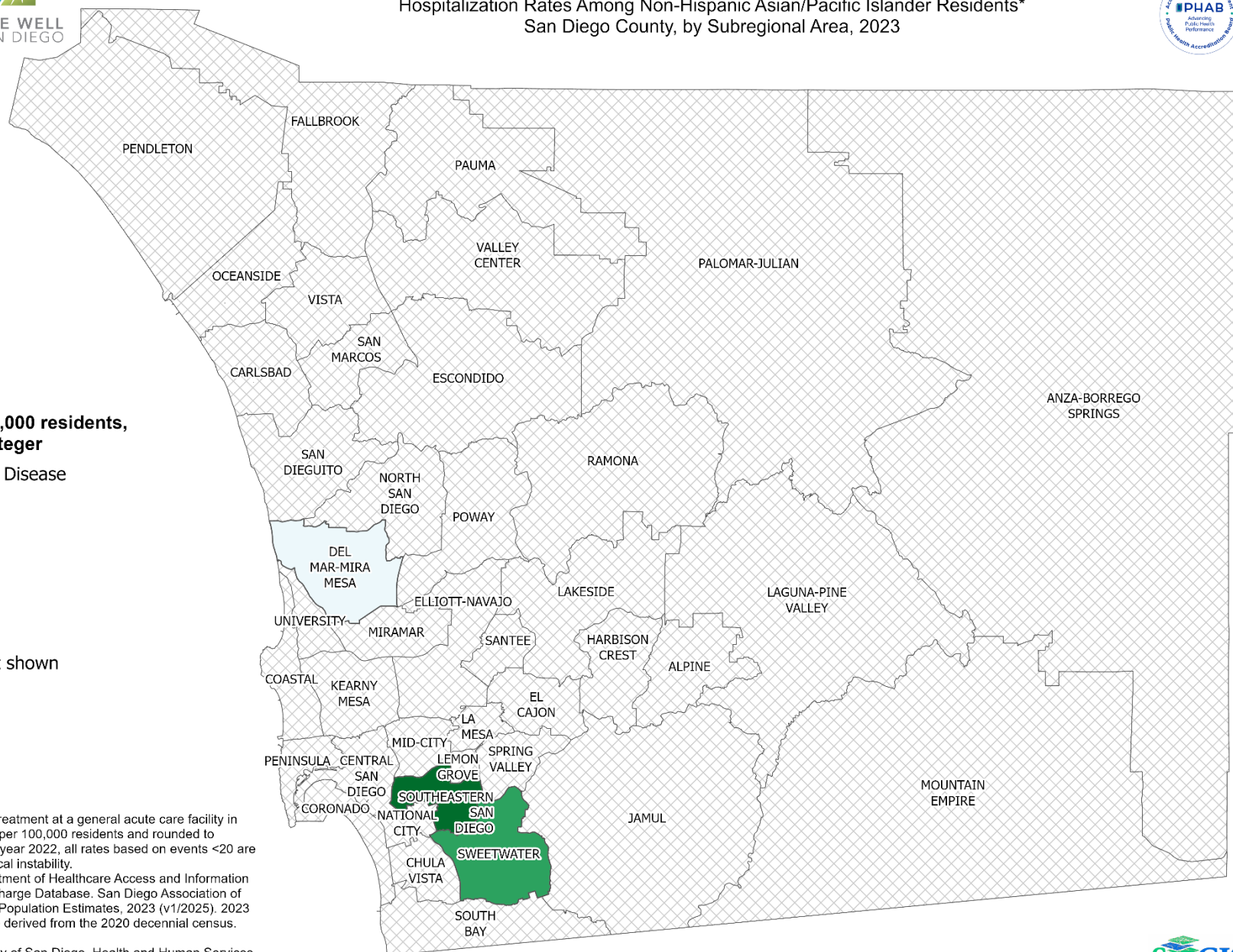
48 - 60

61 - 74

75 - 87

88 - 100

Data not shown



\*Hospitalization refers to treatment at a general acute care facility in San Diego County. Rates per 100,000 residents and rounded to integer. Starting with data year 2022, all rates based on events <20 are suppressed due to statistical instability.  
Sources: California Department of Healthcare Access and Information (HCAI), 2023 Patient Discharge Database. San Diego Association of Governments (SANDAG) Population Estimates, 2023 (v1/2025). 2023 population estimates were derived from the 2020 decennial census.

Maps & Analysis by County of San Diego, Health and Human Services Agency, Public Health Services, Community Health Statistics Unit.  
Contact 619.692.6672. [https://www.sandiegocounty.gov/hhsa/programs/phs/community\\_health\\_statistics/LiveWellSD.org](https://www.sandiegocounty.gov/hhsa/programs/phs/community_health_statistics/LiveWellSD.org).  
September 2025.

0 5 10 20 Miles



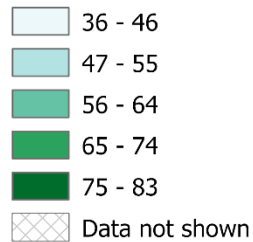


# Hospitalization Rates Among Hispanic Residents\* San Diego County, by Subregional Area, 2023



## Rates per 100,000 residents, rounded to integer

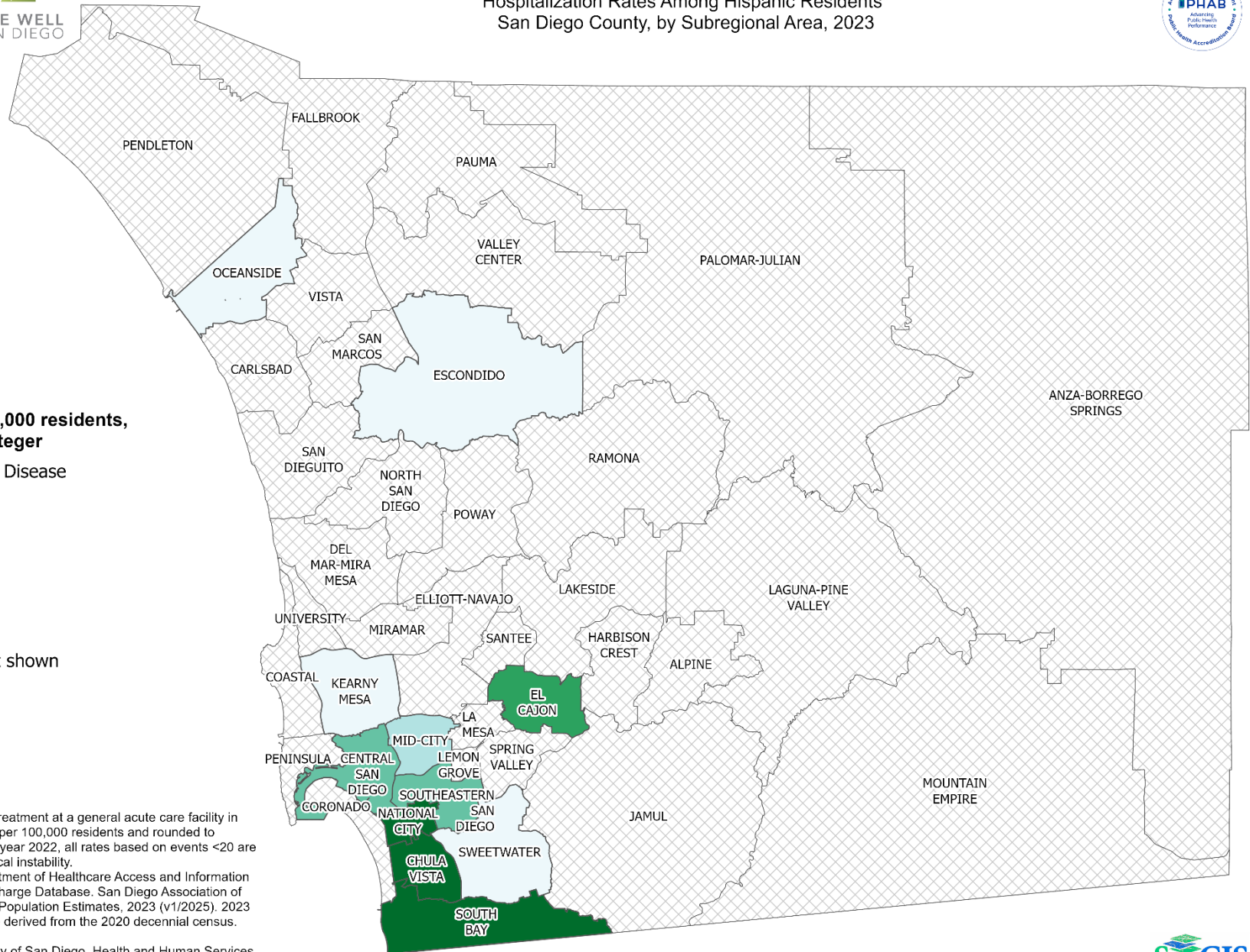
### Chronic Kidney Disease



\*Hospitalization refers to treatment at a general acute care facility in San Diego County. Rates per 100,000 residents and rounded to integer. Starting with data year 2022, all rates based on events <20 are suppressed due to statistical instability.

Sources: California Department of Healthcare Access and Information (HCAI), 2023 Patient Discharge Database. San Diego Association of Governments (SANDAG) Population Estimates, 2023 (v1/2025). 2023 population estimates were derived from the 2020 decennial census.

Maps & Analysis by County of San Diego, Health and Human Services Agency, Public Health Services, Community Health Statistics Unit.  
Contact 619.692.6672. [https://www.sandiegocounty.gov/hhsa/programs/phs/community\\_health\\_statistics/LiveWellSD.org](https://www.sandiegocounty.gov/hhsa/programs/phs/community_health_statistics/LiveWellSD.org).  
September 2025.





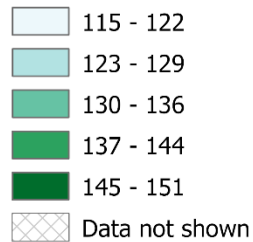


# Hospitalization Rates Among Residents, Ages 50-59\* San Diego County, by Subregional Area, 2023



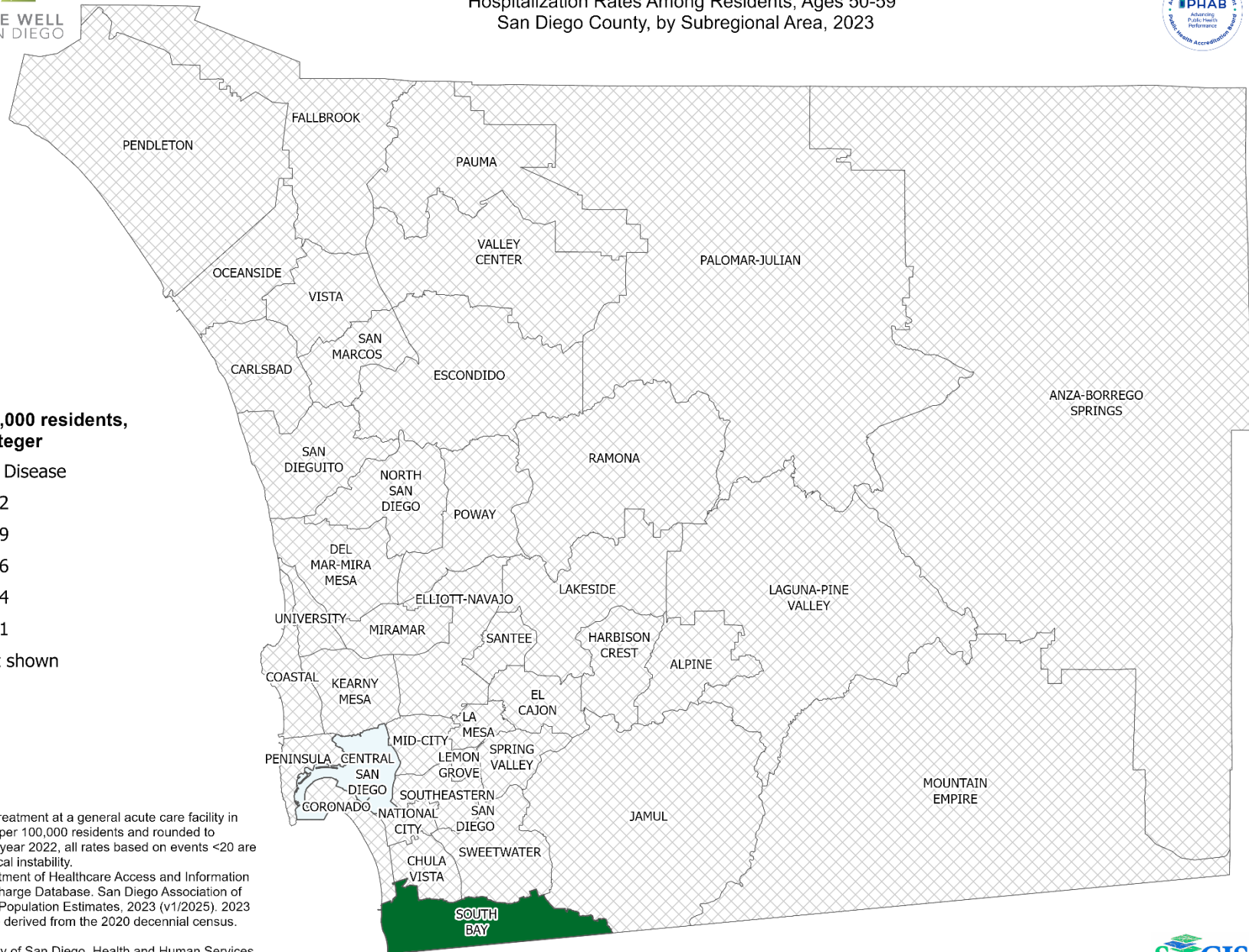
## Rates per 100,000 residents, rounded to integer

### Chronic Kidney Disease



\*Hospitalization refers to treatment at a general acute care facility in San Diego County. Rates per 100,000 residents and rounded to integer. Starting with data year 2022, all rates based on events <20 are suppressed due to statistical instability.  
Sources: California Department of Healthcare Access and Information (HCAI), 2023 Patient Discharge Database. San Diego Association of Governments (SANDAG) Population Estimates, 2023 (v1/2025). 2023 population estimates were derived from the 2020 decennial census.

Maps & Analysis by County of San Diego, Health and Human Services Agency, Public Health Services, Community Health Statistics Unit.  
Contact 619.692.6672. [https://www.sandiegocounty.gov/hhsa/programs/phs/community\\_health\\_statistics/LiveWellSD.org](https://www.sandiegocounty.gov/hhsa/programs/phs/community_health_statistics/LiveWellSD.org).  
September 2025.





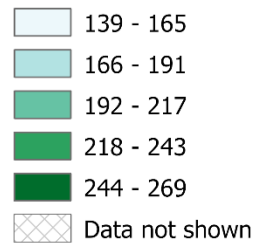


# Hospitalization Rates Among Residents, Ages 60-69\* San Diego County, by Subregional Area, 2023



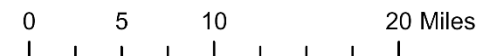
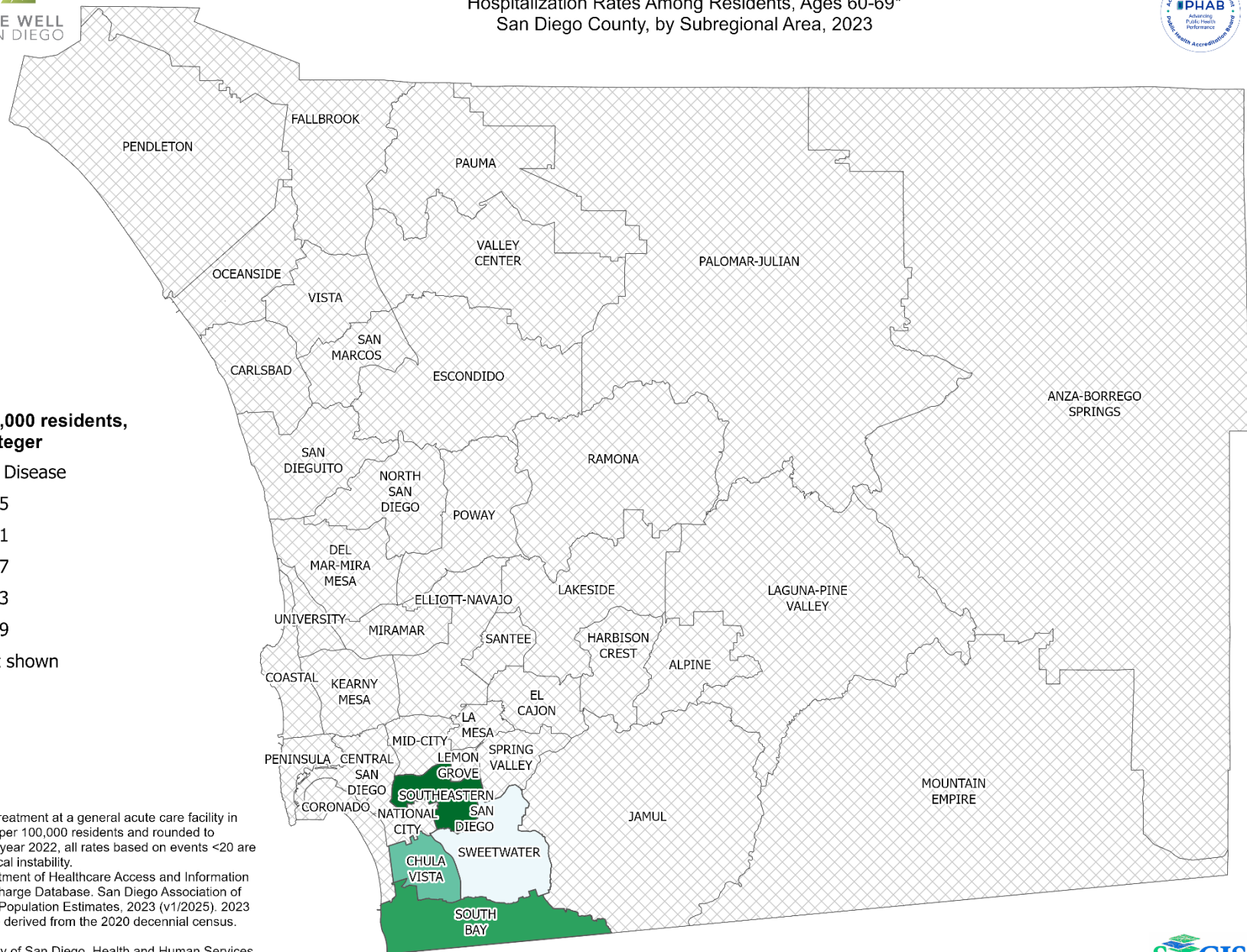
## Rates per 100,000 residents, rounded to integer

### Chronic Kidney Disease



\*Hospitalization refers to treatment at a general acute care facility in San Diego County. Rates per 100,000 residents and rounded to integer. Starting with data year 2022, all rates based on events <20 are suppressed due to statistical instability.  
Sources: California Department of Healthcare Access and Information (HCAI), 2023 Patient Discharge Database. San Diego Association of Governments (SANDAG) Population Estimates, 2023 (v1/2025). 2023 population estimates were derived from the 2020 decennial census.

Maps & Analysis by County of San Diego, Health and Human Services Agency, Public Health Services, Community Health Statistics Unit.  
Contact 619.692.6672. [https://www.sandiegocounty.gov/hhsa/programs/phs/community\\_health\\_statistics/LiveWellSD.org](https://www.sandiegocounty.gov/hhsa/programs/phs/community_health_statistics/LiveWellSD.org).  
September 2025.



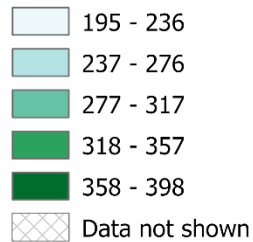


# Hospitalization Rates Among Residents, Ages 70-79\* San Diego County, by Subregional Area, 2023



## Rates per 100,000 residents, rounded to integer

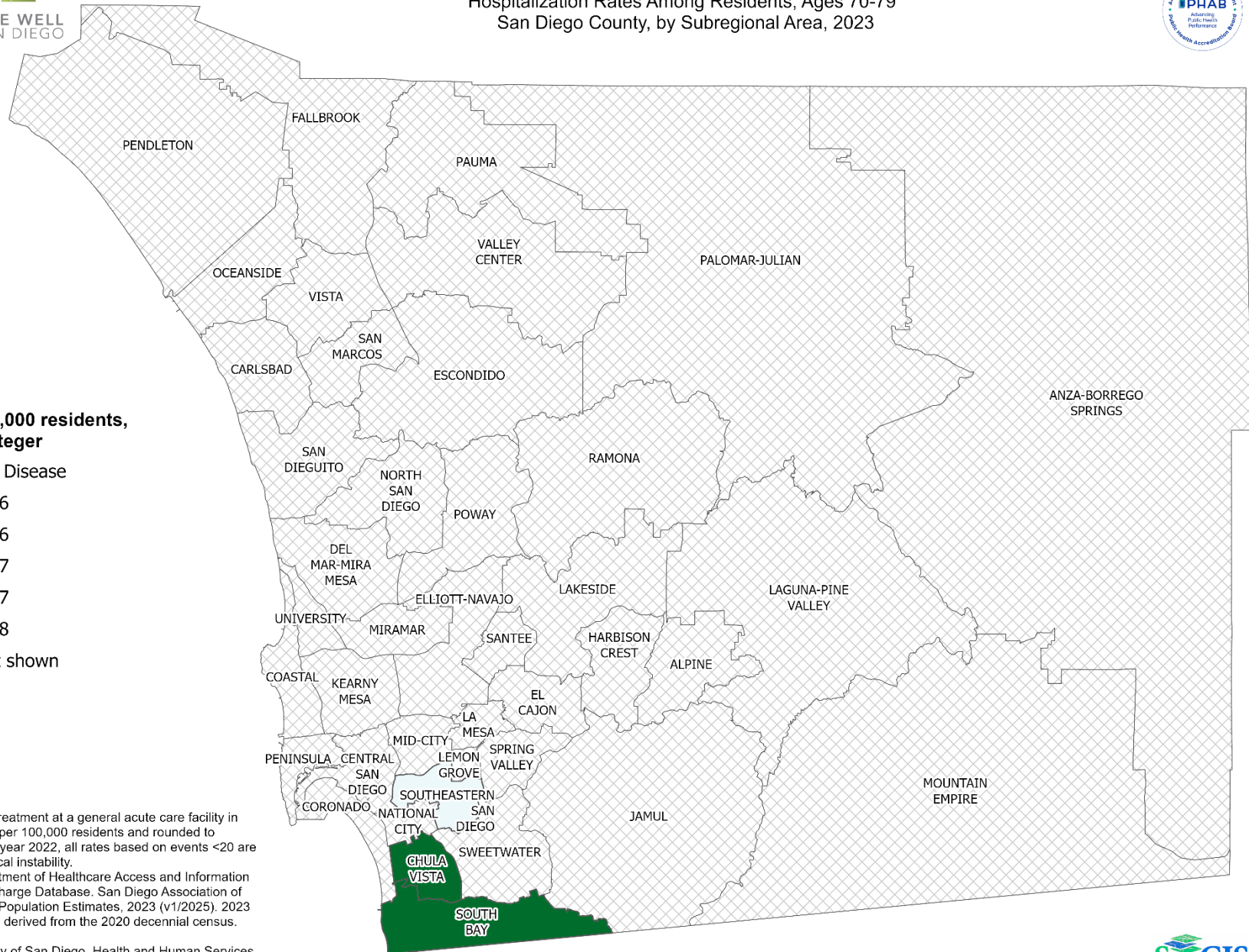
### Chronic Kidney Disease



\*Hospitalization refers to treatment at a general acute care facility in San Diego County. Rates per 100,000 residents and rounded to integer. Starting with data year 2022, all rates based on events <20 are suppressed due to statistical instability.

Sources: California Department of Healthcare Access and Information (HCAI), 2023 Patient Discharge Database. San Diego Association of Governments (SANDAG) Population Estimates, 2023 (v1/2025). 2023 population estimates were derived from the 2020 decennial census.

Maps & Analysis by County of San Diego, Health and Human Services Agency, Public Health Services, Community Health Statistics Unit. Contact 619.692.6672. [https://www.sandiegocounty.gov/hhsa/programs/phs/community\\_health\\_statistics/LiveWellSD.org](https://www.sandiegocounty.gov/hhsa/programs/phs/community_health_statistics/LiveWellSD.org). September 2025.







## Section 3: Emergency Department Discharge

*Emergency Department Discharge Rates Among San Diego County Residents by Demographic, 2023:*

- Total Rate
- Race/Ethnicity
  - Non-Hispanic Asian/Pacific Islander (API)
  - Non-Hispanic Black
  - Hispanic
  - Non-Hispanic White
- Age Group
  - 0-9 Years
  - 10-19 Years
  - 20-29 Years
  - 30-39 Years
  - 40-49 Years
  - 50-59 Years
  - 60-69 Years
  - 70-79 Years
  - 80+ Years





# Total Emergency Department Discharge Rates\* San Diego County, by Subregional Area, 2023



## Rates per 100,000 residents, rounded to integer

### Chronic Kidney Disease

16 - 27

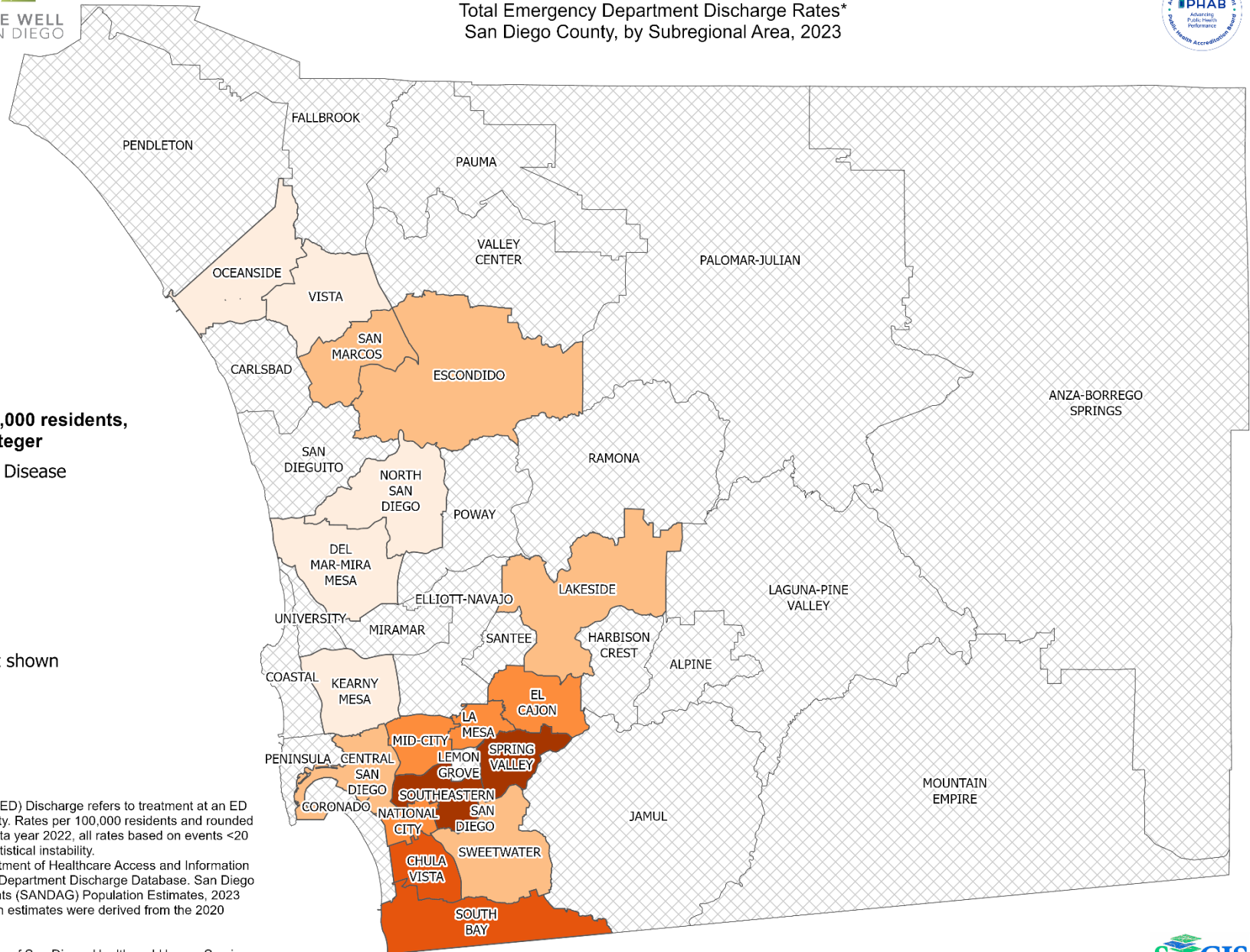
28 - 39

40 - 50

51 - 61

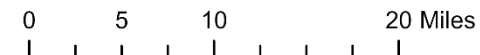
62 - 72

Data not shown



\*Emergency Department (ED) Discharge refers to treatment at an ED facility in San Diego County. Rates per 100,000 residents and rounded to integer. Starting with data year 2022, all rates based on events <20 are suppressed due to statistical instability.  
Sources: California Department of Healthcare Access and Information (HCAI), 2023 Emergency Department Discharge Database. San Diego Association of Governments (SANDAG) Population Estimates, 2023 (v1/2025). 2023 population estimates were derived from the 2020 decennial census.

Maps & Analysis by County of San Diego, Health and Human Services Agency, Public Health Services, Community Health Statistics Unit.  
Contact 619.692.6672. [https://www.sandiegocounty.gov/hhsa/programs/phs/community\\_health\\_statistics/LiveWellSD.org](https://www.sandiegocounty.gov/hhsa/programs/phs/community_health_statistics/LiveWellSD.org).  
August 2025.



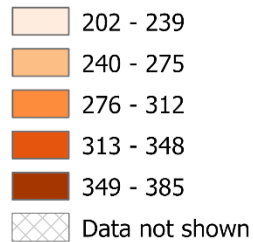


# Emergency Department Discharge Rates Among Non-Hispanic Black Residents\* San Diego County, by Subregional Area, 2023



## Rates per 100,000 residents, rounded to integer

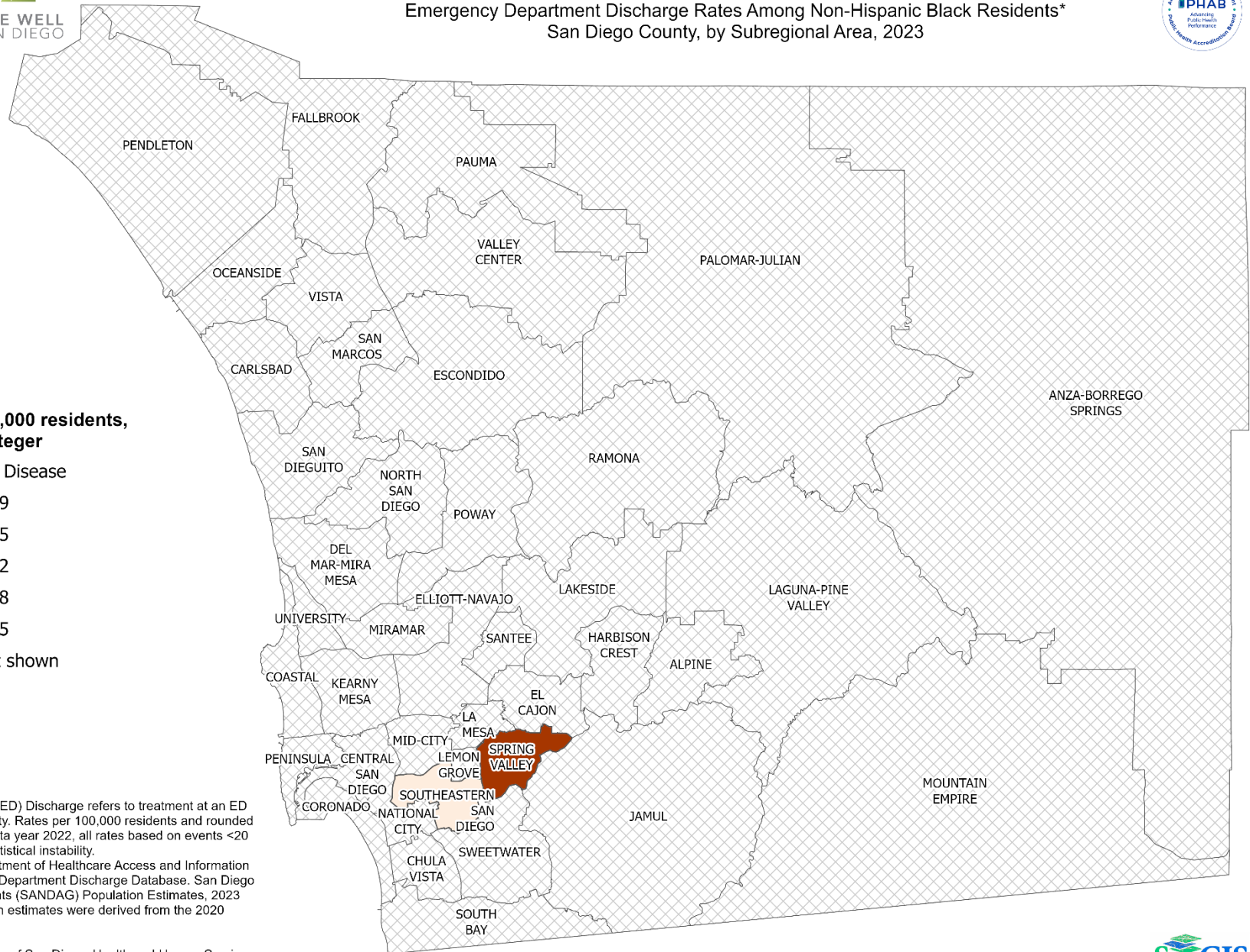
### Chronic Kidney Disease



\*Emergency Department (ED) Discharge refers to treatment at an ED facility in San Diego County. Rates per 100,000 residents and rounded to integer. Starting with data year 2022, all rates based on events <20 are suppressed due to statistical instability.

Sources: California Department of Healthcare Access and Information (HCAI), 2023 Emergency Department Discharge Database. San Diego Association of Governments (SANDAG) Population Estimates, 2023 (v1/2025). 2023 population estimates were derived from the 2020 decennial census.

Maps & Analysis by County of San Diego, Health and Human Services Agency, Public Health Services, Community Health Statistics Unit. Contact 619.692.6672. [https://www.sandiegocounty.gov/hhsa/programs/phs/community\\_health\\_statistics/LiveWellSD.org](https://www.sandiegocounty.gov/hhsa/programs/phs/community_health_statistics/LiveWellSD.org). August 2025.







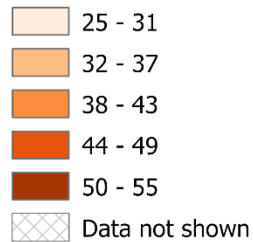
LIVE WELL  
SAN DIEGO

## Emergency Department Discharge Rates Among Hispanic Residents\* San Diego County, by Subregional Area, 2023



### Rates per 100,000 residents, rounded to integer

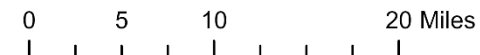
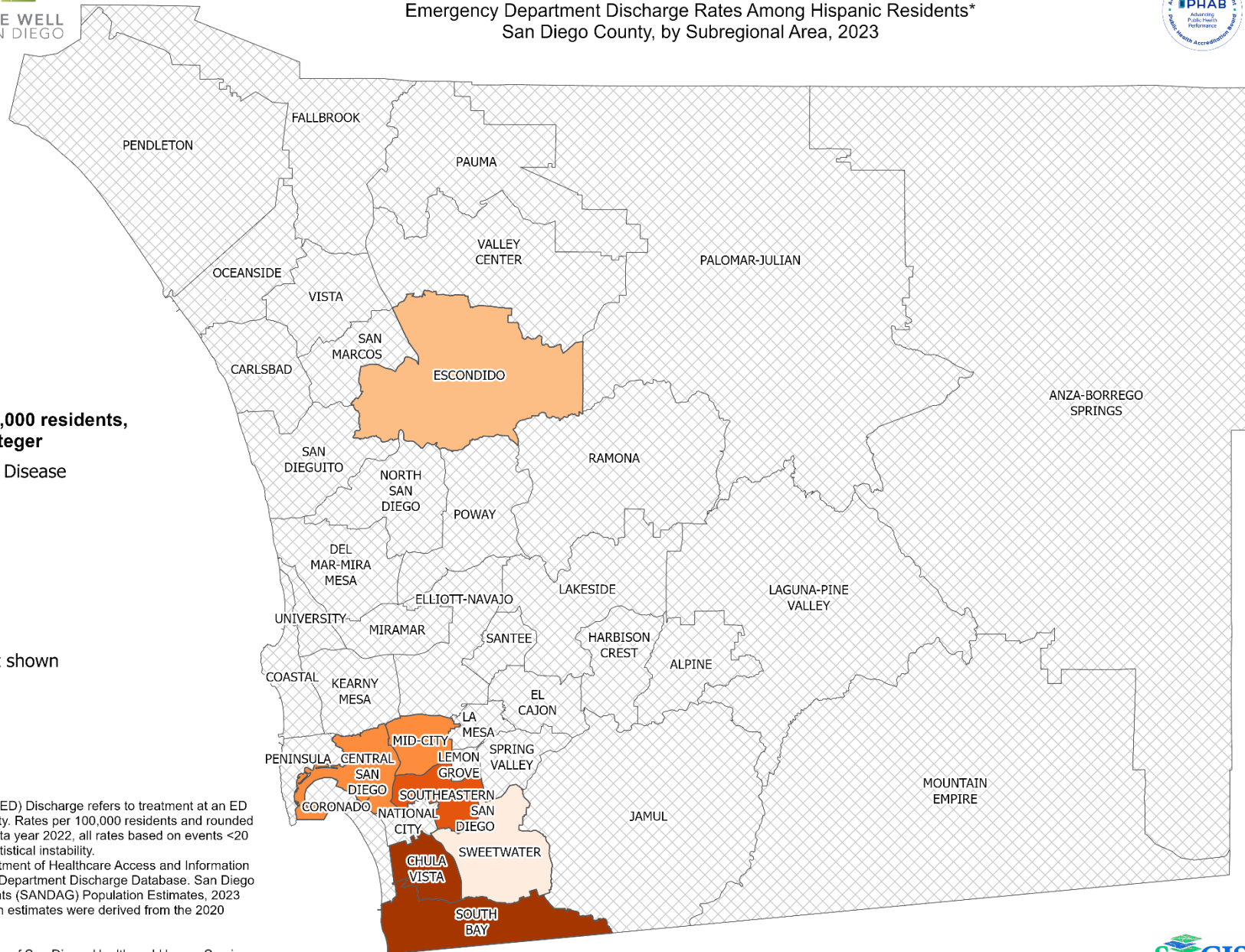
#### Chronic Kidney Disease



\*Emergency Department (ED) Discharge refers to treatment at an ED facility in San Diego County. Rates per 100,000 residents and rounded to integer. Starting with data year 2022, all rates based on events <20 are suppressed due to statistical instability.

Sources: California Department of Healthcare Access and Information (HCAI), 2023 Emergency Department Discharge Database. San Diego Association of Governments (SANDAG) Population Estimates, 2023 (v1/2025). 2023 population estimates were derived from the 2020 decennial census.

Maps & Analysis by County of San Diego, Health and Human Services Agency, Public Health Services, Community Health Statistics Unit. Contact 619.692.6672. [https://www.sandiegocounty.gov/hhsa/programs/phs/community\\_health\\_statistics/LiveWellSD.org](https://www.sandiegocounty.gov/hhsa/programs/phs/community_health_statistics/LiveWellSD.org). August 2025.







## Section 4: In-Patient Treatment

*In-Patient Treatment Rates Among San Diego County Residents by Demographic, 2023:*

- Total Rate
- Race/Ethnicity
  - Non-Hispanic Asian/Pacific Islander (API)
  - Non-Hispanic Black
  - Hispanic
  - Non-Hispanic White
- Age Group
  - 0-9 Years
  - 10-19 Years
  - 20-29 Years
  - 30-39 Years
  - 40-49 Years
  - 50-59 Years
  - 60-69 Years
  - 70-79 Years
  - 80+ Years

**No SRA-level rate  
data available for this  
section.**