

3-4-50: Chronic Disease Deaths in San Diego County Short Brief – North Inland Region, 2000-2021

(Click Here for Detailed Brief)

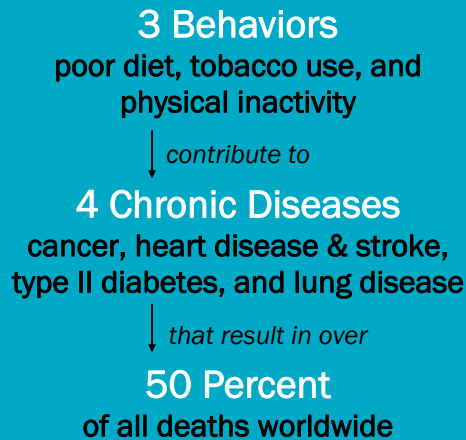
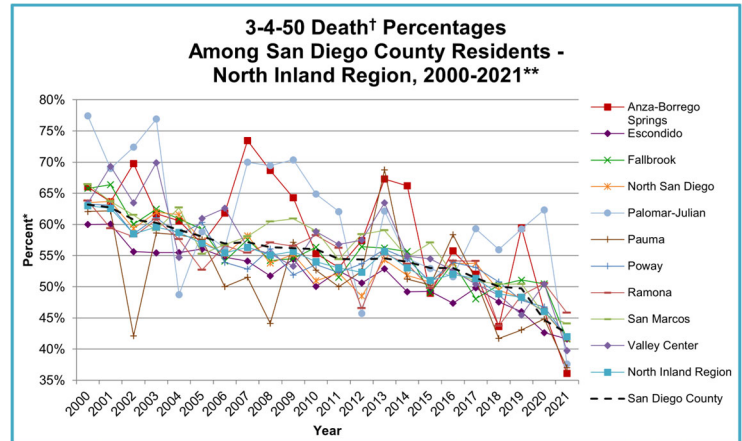


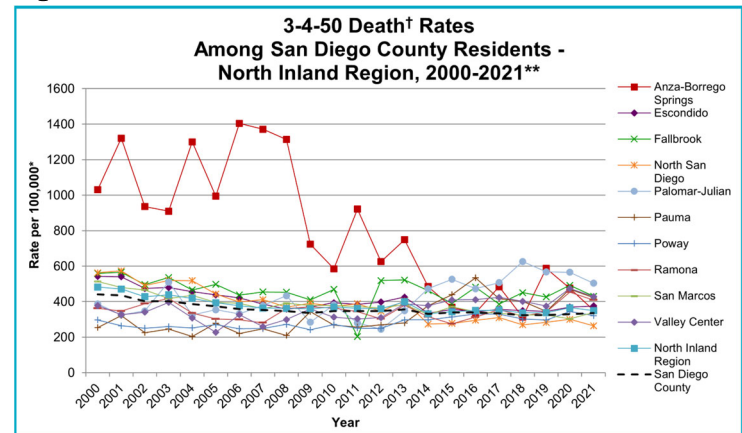
Figure 1: 3-4-50 Death Percentages



What is 3-4-50?

Three-four-fifty refers to three behaviors that contribute to four chronic diseases and result in 50% or more deaths worldwide.¹ These chronic diseases are potentially preventable through modifying diet, physical activity, and smoking behaviors. In San Diego County, 43% of all deaths are due to these four chronic diseases.

Figure 2: 3-4-50 Death Rates



3-4-50 in San Diego County—North Inland Region

- From 2000-2021, the overall percent of deaths due to 3-4-50 chronic diseases decreased in the North Inland Region and its subregional areas (SRAs) (Figure 1).
- Overall, 3-4-50 chronic disease death rates have decreased in the North Inland Region and half of its SRAs from 2000-2021. (Figure 2).
- Among the North Inland Region SRAs, Ramona had the highest percentage of deaths due to 3-4-50 chronic diseases in 2021.
- Among the North Inland Region SRAs, Palomar-Julian had the highest death rate due to 3-4-50 chronic diseases in 2021.
- Despite a decrease, 3-4-50 chronic diseases still accounted for 42% of all deaths in the North Inland Region in 2021.

†3-4-50 deaths include stroke, coronary heart disease (CHD), diabetes, COPD, asthma, and cancer. Beginning with 2017, COPD includes chronic lower respiratory diseases (COPD/chronic lower respiratory diseases).
 *3-4-50 deaths as a percentage of all cause deaths. Rates per 100,000 population. Population estimates for 2020 and 2021 were derived using the 2010 Census and data should be considered preliminary.
 **The COVID-19 pandemic was associated with increases in all-cause mortality. COVID-19 deaths have affected the patterns of mortality including those of 3-4-50 chronic diseases.



QR CODES:

QR codes are similar to barcodes. Use your smartphone to scan the QR Code and navigate directly to the report online for download. Download a free QR code reader from your app provider.

For more information and data, go to
www.SDHealthStatistics.com

¹World Health Organization (WHO). "WHO reveals leading causes of death and disability worldwide: 2000-2019", <https://www.who.int/news/item/09-12-2020-who-reveals-leading-causes-of-death-and-disability-worldwide-2000-2019> (Accessed April 10, 2023).



What does 3-4-50 look like in North Inland Region?

In North Inland Region, 3-4-50 is actually 3-4-42

In San Diego County, 3-4-50 is actually 3-4-43

3 BEHAVIORS

TOBACCO USE*

- In 2021, 2.5% of adults in North Inland Region reported being current smokers.

LACK OF PHYSICAL ACTIVITY~

- In 2020, nearly 1 in 2 children in North Inland Region spent 5 or more hours on sedentary activities on typical weekend days.

POOR NUTRITION

- In 2020, 76.4% of children in North Inland Region ate less than 5 servings of fruits/vegetables daily.

TOBACCO USE

- In 2021, 6.1% of adults in San Diego County reported being current smokers.

LACK OF PHYSICAL ACTIVITY~

- In 2020, over 1 in 3 children in San Diego County spent 5 or more hours on sedentary activities on typical weekend days.

POOR NUTRITION

- In 2020, 62.8% of children in San Diego County ate less than 5 servings of fruits/vegetables daily.

4 CHRONIC DISEASES

CANCER

- In 2021, cancer was the leading cause of death in North Inland Region.

HEART DISEASE & STROKE

- In 2021, 6.0% of adults in North Inland Region had ever been diagnosed with heart disease.

DIABETES

- In 2021, 3.8% of adults in North Inland Region had ever been diagnosed with diabetes.

LUNG DISEASE

- In 2021, 15.5% of residents (ages 1 year and older) in North Inland Region had ever been diagnosed with asthma.

CANCER

- In 2021, cancer was the leading cause of death in San Diego County.

HEART DISEASE & STROKE

- In 2021, 6.7% of adults in San Diego County had ever been diagnosed with heart disease.

DIABETES

- In 2021, 8.5% of adults in San Diego County had ever been diagnosed with diabetes.

LUNG DISEASE

- In 2021, 14.2% of residents (ages 1 year and older) in San Diego County had ever been diagnosed with asthma.

CAUSE OVER 50% OF DEATHS

In 2021, cancer, heart disease and stroke, diabetes, and lung disease caused 42% of all deaths in the North Inland Region.

In 2021, cancer, heart disease and stroke, diabetes, and lung disease caused 43% of all deaths in San Diego County.

*Indicates a statistically unstable estimate. Proceed with caution. Estimate is included for trending purposes.

~Includes "5 to less than 8 hours" and "8 or more hours" spent on sedentary activities on typical weekend days.