

3-4-50: Chronic Disease Deaths in San Diego County Short Brief 2000-2021

[\(Click Here for Detailed Brief\)](#)

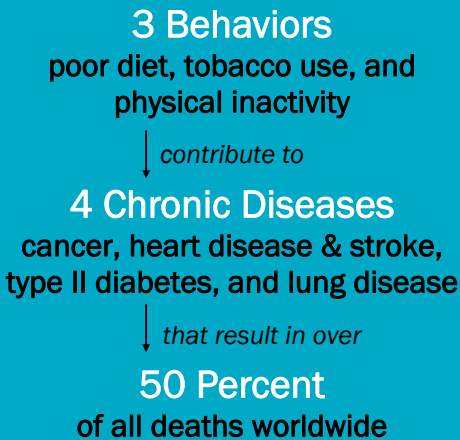
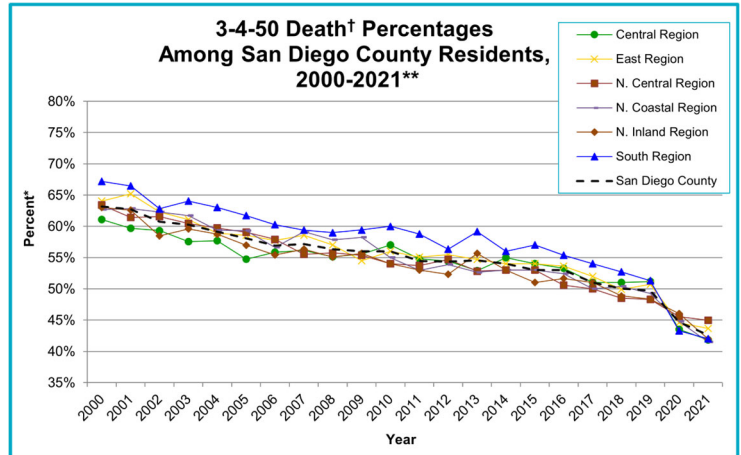


Figure 1: 3-4-50 Death Percentages



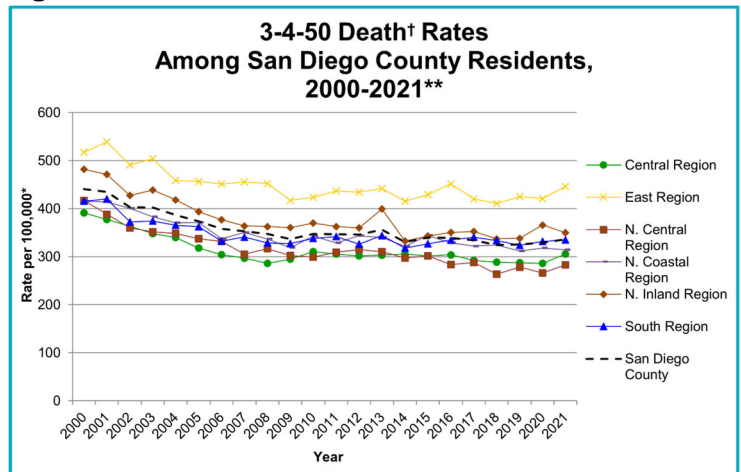
What is 3-4-50?

Three-four-fifty refers to three behaviors that contribute to four chronic diseases and result in 50% or more deaths worldwide.¹ These chronic diseases are potentially preventable through modifying diet, physical activity, and smoking behaviors. In San Diego County, 43% of all deaths are due to these four chronic diseases.

3-4-50 in San Diego County—San Diego County

- From 2000-2021, the overall percent of deaths due to 3-4-50 chronic diseases decreased in the six Health and Human Services Agency (HHS) regions (Figure 1).
- Overall, 3-4-50 chronic disease death rates have decreased in all HHS regions from 2000-2021 (Figure 2).
- Among the HHS regions, North Central Region had the highest percent of deaths due to 3-4-50 chronic diseases in 2021.
- Among the HHS regions, Central Region had the lowest death rates due to 3-4-50 chronic diseases every year from 2000 to 2015, with the exception of 2002, 2010, 2014, and 2016-2020 when North Central Region had the lowest rate.
- Despite a decrease, 3-4-50 chronic diseases still accounted for 43% of all deaths in San Diego County in 2021.

Figure 2: 3-4-50 Death Rates



†3-4-50 deaths include stroke, coronary heart disease (CHD), diabetes, COPD, asthma, and cancer. Beginning with 2017, COPD includes chronic lower respiratory diseases (COPD/chronic lower respiratory diseases).
 *3-4-50 deaths as a percentage of all cause deaths. Rates per 100,000 population. Population estimates for 2020 and 2021 were derived using the 2010 Census and data should be considered preliminary.
 **The COVID-19 pandemic was associated with increases in all-cause mortality. COVID-19 deaths have affected the patterns of mortality including those of 3-4-50 chronic diseases.



QR CODES:

QR codes are similar to barcodes. Use your smartphone to scan the QR Code and navigate directly to the report online for download. Download a free QR code reader from your app provider.

For more information and data, go to www.SDHealthStatistics.com

What does 3-4-50 look like in San Diego County?

In San Diego County, 3-4-50 is actually 3-4-43

3 BEHAVIORS

TOBACCO USE

- In 2021, 6.1% of adults in San Diego County reported being current smokers.

LACK OF PHYSICAL ACTIVITY~

- In 2020, over 1 in 3 children in San Diego County spent 5 or more hours on sedentary activities on typical weekend days.

POOR NUTRITION

- In 2020, 62.8% of children in San Diego County ate less than 5 servings of fruits/vegetables daily.

TOBACCO USE

- In 2021, North Central Region had the highest percent of adults who were current smokers.

LACK OF PHYSICAL ACTIVITY~

- In 2020, North Coastal Region had the highest percent of children who spent 5 or more hours on sedentary activities on typical weekend days.

POOR NUTRITION

- In 2020, North Inland Region had the highest percent of children who ate less than 5 servings of fruits/vegetables daily.

4 CHRONIC DISEASES

CANCER

- In 2021, cancer was the leading cause of death in San Diego County.

HEART DISEASE & STROKE

- In 2021, 6.7% of adults in San Diego County had ever been diagnosed with heart disease.

DIABETES

- In 2021, 8.5% of adults in San Diego County had ever been diagnosed with diabetes.

LUNG DISEASE

- In 2021, 14.2% of residents (ages 1 year and older) in San Diego County had ever been diagnosed with asthma.

CANCER

- In 2021, cancer was the leading cause of death in four HHS regions: East, North Central, North Inland, and South.

HEART DISEASE & STROKE

- In 2021, North Coastal Region had the highest percent of adults who had ever been diagnosed with heart disease.

DIABETES

- In 2021, East Region had the highest percent of adults who had ever been diagnosed with diabetes.

LUNG DISEASE

- In 2021, East Region had the highest percent of residents (ages 1 year and older) who had ever been diagnosed with asthma.

CAUSE OVER 50% OF DEATHS

In 2021, cancer, heart disease and stroke, diabetes, and lung disease caused 43% of all deaths in San Diego County.

In 2021, North Central Region had the highest percent of deaths due to 3-4-50 chronic diseases at 45%, while North Coastal Region had the lowest at 41%.