

Chronic Disease Prevalence and Health Behaviors, San Diego County and Health and Human Services Agency (HHSA) Regions, 2001-2021

Public Health Services, Community Health Statistics
02/2023



LIVE WELL
SAN DIEGO





Chronic Disease Prevalence in San Diego County and Health and Human Services Agency (HHSA) Regions, 2001-2021



Percentage of residents ever told that they had angina or coronary heart disease (18+), San Diego County, 2015-2020



LIVE WELL
SAN DIEGO

Year	Percentage	95% Confidence Interval
2015	2.2%	1.4 - 3.0
2016	3.4%	2.2 - 4.6
2017-2018*	2.4%	1.5 - 3.2
2019-2020*	2.1%	1.2 - 3.1

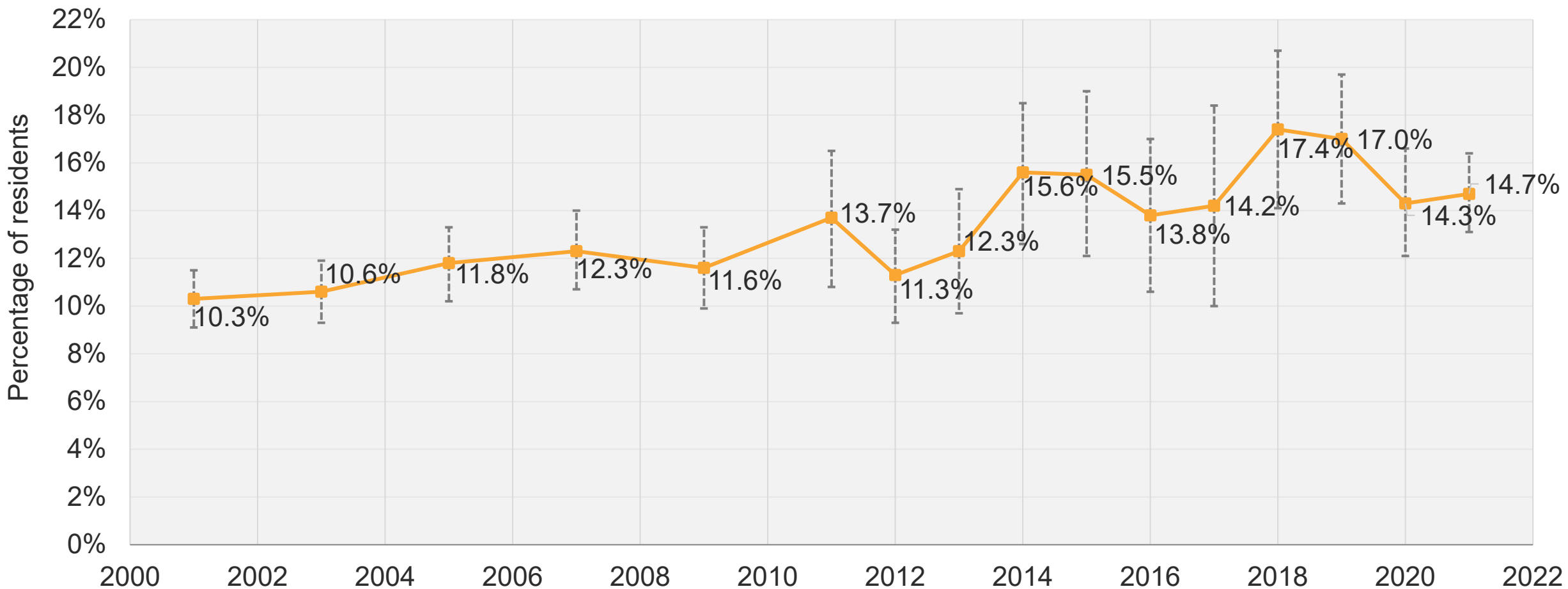
*Pooled years

Source: Centers for Disease Control and Prevention (CDC). The Behavioral Risk Factor Surveillance System (BRFSS), 2015-2020.

Percentage of residents ever diagnosed with asthma (18+), San Diego County, 2001-2021



LIVE WELL
SAN DIEGO



Gray dotted lines indicate 95% confidence intervals.

Source: UCLA Center for Health Policy Research, Los Angeles, CA. AskCHIS 2001-2021. Ever diagnosed with asthma. Available at <http://ask.chis.ucla.edu>. Exported on August 29, 2022 and November 4, 2022.

Prepared by County of San Diego, Health and Human Services Agency, Public Health Services, Community Health Statistics Unit, 11/2022.



Percentage of residents ever told that they had cancer (18+), San Diego County, 2015-2020



LIVE WELL
SAN DIEGO

Year	Percentage	95% Confidence Interval
2015	11.8%	9.8 - 13.8
2016	9.2%	7.2 - 11.2
2017-2018*	11.2%	9.4 - 13.0
2019-2020*	13.1%	10.7 - 15.6

*Pooled years

Source: Centers for Disease Control and Prevention (CDC). The Behavioral Risk Factor Surveillance System (BRFSS), 2015-2020.

Percentage of residents ever told that they have COPD, emphysema, or chronic bronchitis (18+), San Diego County, 2015-2020

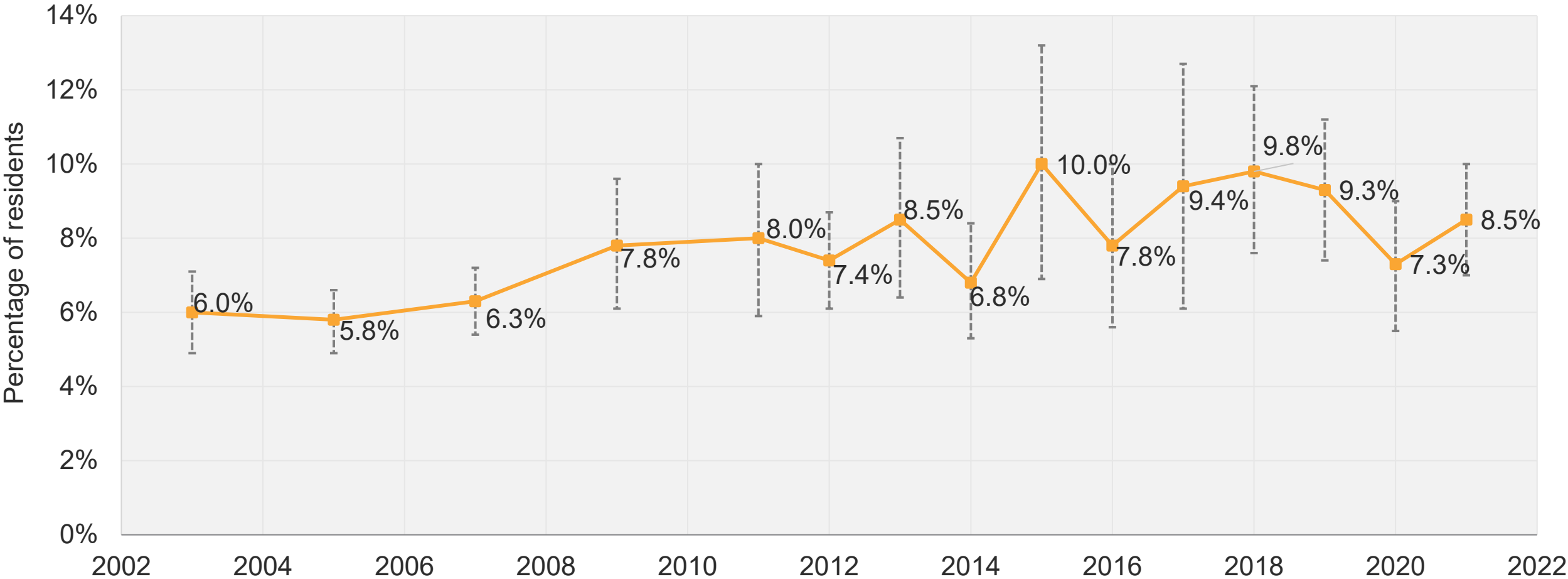


Year	Percentage	95% Confidence Interval
2015	3.5%	2.5 - 4.5
2016	3.8%	2.4 - 5.1
2017-2018*	3.4%	2.5 - 4.3
2019-2020*	5.3%	3.5 - 7.1

*Pooled years
Source: Centers for Disease Control and Prevention (CDC). The Behavioral Risk Factor Surveillance System (BRFSS), 2015-2020.



Percentage of residents ever diagnosed with diabetes (18+), San Diego County, 2003-2021



Gray dotted lines indicate 95% confidence intervals.
Source: UCLA Center for Health Policy Research, Los Angeles, CA. AskCHIS 2003-2021. Ever diagnosed with diabetes. Available at <http://ask.chis.ucla.edu>. Exported on August 29, 2022 and November 4, 2022.
Prepared by County of San Diego, Health and Human Services Agency, Public Health Services, Community Health Statistics Unit, 11/2022.

Percentage of residents ever told that they had a heart attack or a myocardial infarction (18+), San Diego County, 2015-2020



LIVE WELL
SAN DIEGO

Year	Percentage	95% Confidence Interval
2015	2.2%	1.4 - 3.1
2016	2.1%	1.2 - 3.0
2017-2018*	2.9%	2.0 - 3.8
2019-2020*	3.4%	1.9 - 4.8

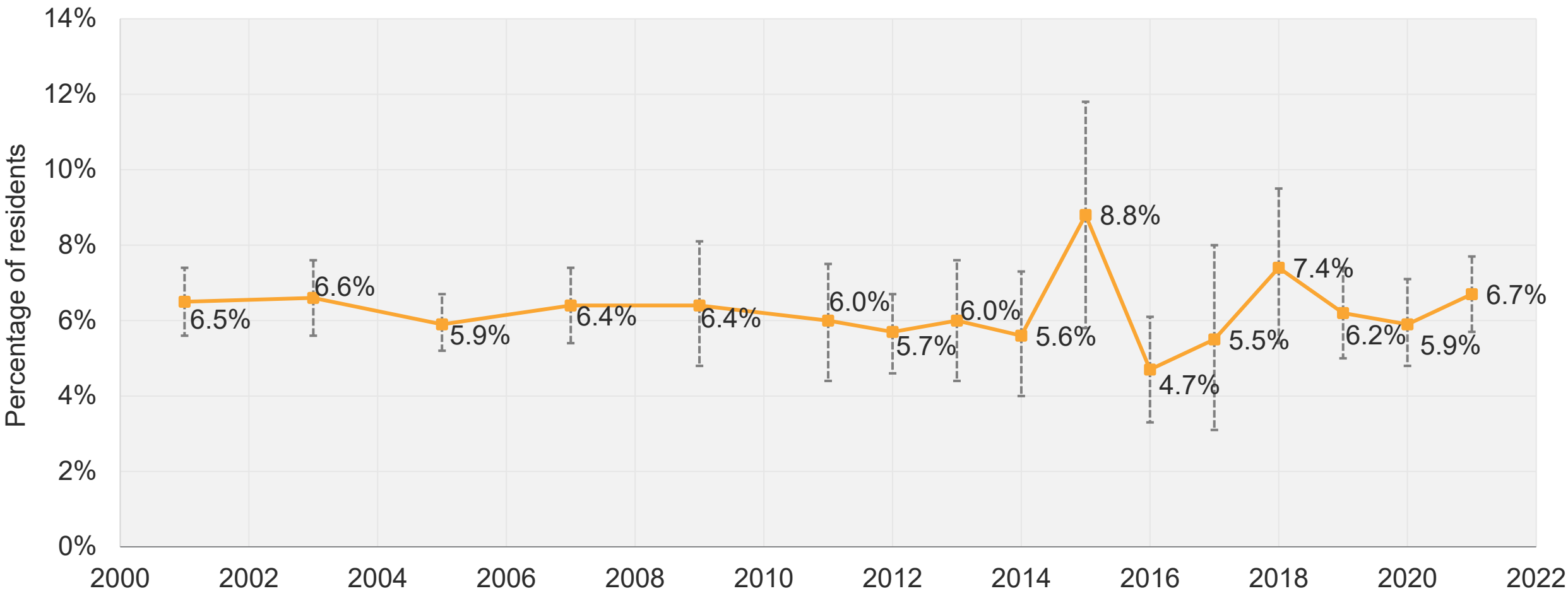
*Pooled years

Source: Centers for Disease Control and Prevention (CDC). The Behavioral Risk Factor Surveillance System (BRFSS), 2015-2020.

Percentage of residents ever diagnosed with heart disease (18+), San Diego County, 2001-2021



LIVE WELL
SAN DIEGO

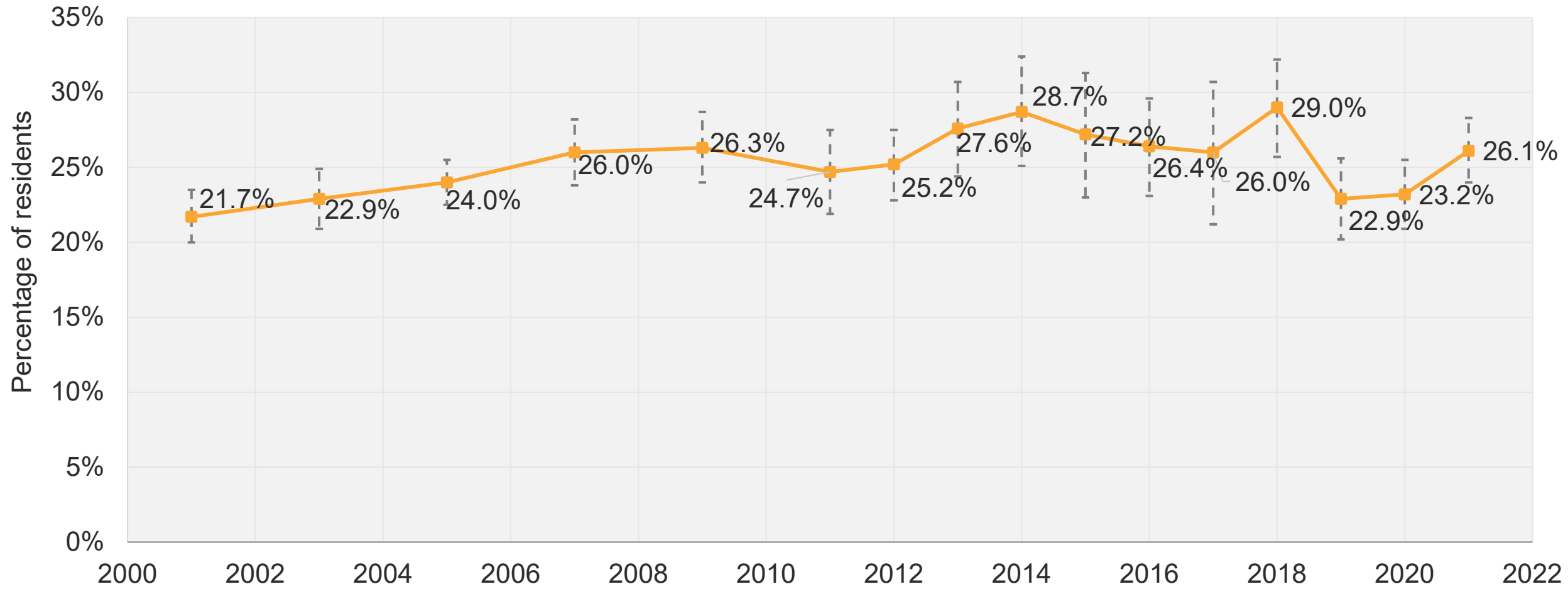


Gray dotted lines indicate 95% confidence intervals.
Source: UCLA Center for Health Policy Research, Los Angeles, CA. AskCHIS 2001-2021. Ever diagnosed with heart disease. Available at <http://ask.chis.ucla.edu>. Exported on August 29, 2022 and November 4, 2022.
Prepared by County of San Diego, Health and Human Services Agency, Public Health Services, Community Health Statistics Unit, 11/2022.

Percentage of residents ever diagnosed with high blood pressure (18+), San Diego County, 2001-2021



LIVE WELL
SAN DIEGO



Gray dotted lines indicate 95% confidence intervals.

Source: UCLA Center for Health Policy Research, Los Angeles, CA. AskCHIS 2001-2018. Ever diagnosed with high blood pressure. Available at <http://ask.chis.ucla.edu>. Exported on August 29, 2022. UCLA Center for Health Policy Research, Los Angeles, CA. AskCHIS 2019-2021. Ever diagnosed with high blood pressure - borderline included. Available at <http://ask.chis.ucla.edu>. Exported on August 29, 2022 and November 4, 2022. Prepared by County of San Diego, Health and Human Services Agency, Public Health Services, Community Health Statistics Unit, 11/2022.

Percentage of residents ever told that they had a stroke, San Diego County, 2015-2020



LIVE WELL
SAN DIEGO

Year	Percentage	95% Confidence Interval
2015	2.3%	1.6 - 3.0
2016	2.3%	1.3 - 3.4
2017-2018*	2.0%	1.3 - 2.7
2019-2020*	3.0%	1.8 - 4.1

*Pooled years
Source: Centers for Disease Control and Prevention (CDC). The Behavioral Risk Factor Surveillance System (BRFSS), 2015-2020.

Percentage of residents ever diagnosed with asthma (18+), Central Region, San Diego County, 2001-2021



LIVE WELL
SAN DIEGO

Year	Percentage	95% Confidence Interval
2001	7.7%	4.6 - 10.7
2003	9.8%	6.4 - 13.1
2005	12.2%	7.4 - 16.9
2007	11.3%	7.8 - 14.8
2009	9.2%	4.6 - 13.7
2011	18.2%	7.4 - 29.0
2012	11.3%	5.3 - 17.4
2013-2014*	13.3%	7.9 - 18.8
2015-2016*	12.1%	6.1 - 18.1
2017-2018*	15.5%	7.5 - 23.6
2019	22.8%	12.5 - 33.0
2020	16.6%	10.6 - 22.6
2021	10.7%	7.5 - 13.9

*Pooled years

Source: UCLA Center for Health Policy Research, Los Angeles, CA. AskCHIS 2001-2021. Ever diagnosed with asthma. Available at <http://ask.chis.ucla.edu>. Exported on August 29, 2022 and November 4, 2022.

Percentage of residents ever diagnosed with diabetes (18+), Central Region, San Diego County, 2003-2021



LIVE WELL
SAN DIEGO

Year	Percentage	95% Confidence Interval
2003	9.4%	5.5 - 13.3
2005	7.9%	5.2 - 10.6
2007	8.8%	5.0 - 12.6
2009	12.0%	5.8 - 18.2
2011-2012*	8.5%	4.6 - 12.3
2013-2014*	7.1%	3.7 - 10.4
2015-2016*	9.1%	4.9 - 13.3
2017-2018*	8.7%	5.1 - 12.4
2019-2020*	11.7%	6.4 - 16.9
2021	8.0%	4.5 - 11.6

*Pooled years

Source: UCLA Center for Health Policy Research, Los Angeles, CA. AskCHIS 2003-2021. Ever diagnosed with diabetes. Available at <http://ask.chis.ucla.edu>. Exported on August 29, 2022 and November 4, 2022.

Percentage of residents ever diagnosed with heart disease (18+), Central Region, San Diego County, 2001-2021



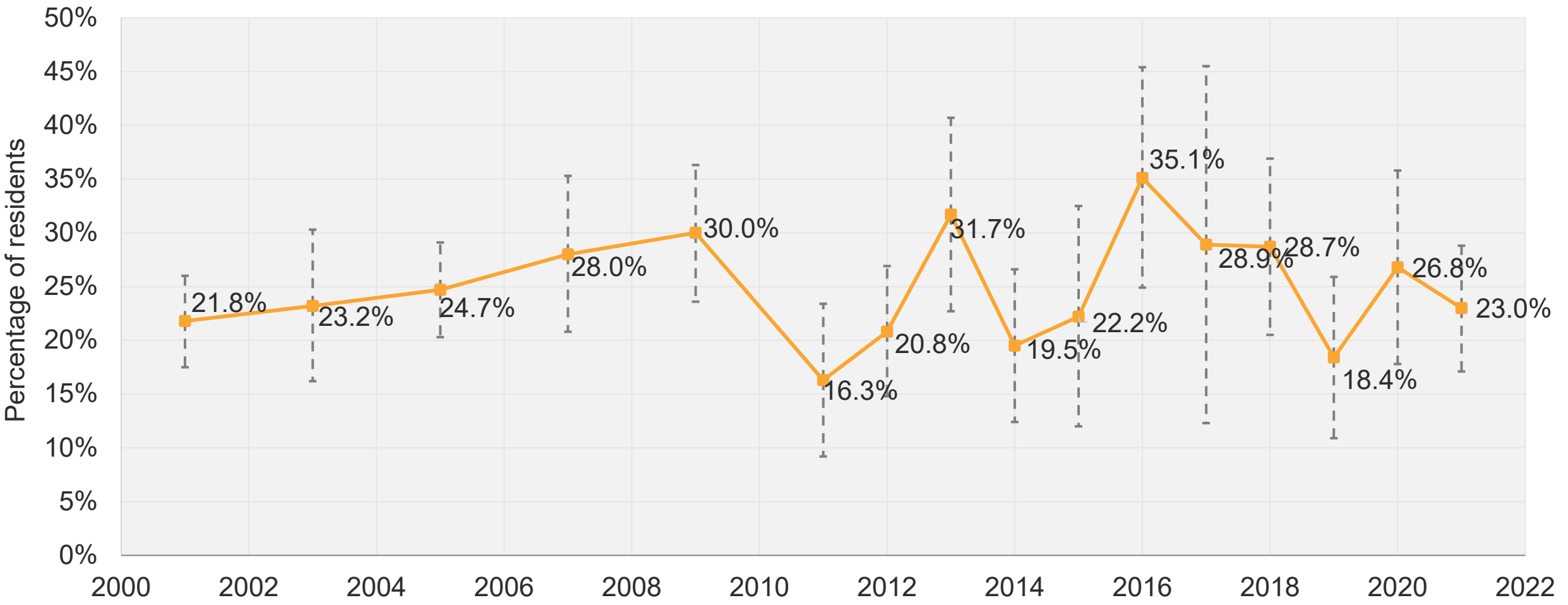
LIVE WELL
SAN DIEGO

Year	Percentage	95% Confidence Interval
2001	6.0%	3.9 - 8.1
2003	5.4%	2.2 - 8.7
2005	6.3%	4.0 - 8.5
2007, 2009*	7.1%	4.1 - 10.2
2011	2.2%	1.1 - 3.4
2012	3.1%	1.6 - 4.6
2013	3.4%	1.5 - 5.4
2014-2015*	3.8%	1.6 - 6.0
2016-2018*	5.7%	3.4 - 8.1
2019-2020*	6.0%	3.5 - 8.5
2021	4.2%	2.6 - 5.8

*Pooled years

Source: UCLA Center for Health Policy Research, Los Angeles, CA. AskCHIS 2001-2021. Ever diagnosed with heart disease. Available at <http://ask.chis.ucla.edu>. Exported on August 29-31, 2022 and November 4, 2022.

Percentage of residents ever diagnosed with high blood pressure (18+), Central Region, San Diego County, 2001-2021



Gray dotted lines indicate 95% confidence intervals.
Source: UCLA Center for Health Policy Research, Los Angeles, CA. AskCHIS 2001-2018. Ever diagnosed with high blood pressure. Available at <http://ask.chis.ucla.edu>. Exported on August 30, 2022. UCLA Center for Health Policy Research, Los Angeles, CA. AskCHIS 2019-2021. Ever diagnosed with high blood pressure - borderline included. Available at <http://ask.chis.ucla.edu>. Exported on August 30, 2022 and November 4, 2022.
Prepared by County of San Diego, Health and Human Services Agency, Public Health Services, Community Health Statistics Unit, 11/2022.

Percentage of residents ever diagnosed with asthma (18+), East Region, San Diego County, 2001-2021



LIVE WELL
SAN DIEGO

Year	Percentage	95% Confidence Interval
2001	13.9%	10.0 - 17.8
2003	13.9%	9.2 - 18.6
2005	10.5%	7.8 - 13.1
2007	14.1%	9.5 - 18.6
2009	14.7%	10.4 - 19.0
2011	15.2%	6.2 - 24.1
2012	8.9%	6.0 - 11.8
2013	11.3%	6.4 - 16.2
2014	23.3%	13.7 - 32.8
2015	16.3%	8.8 - 23.9
2016	12.3%	5.9 - 18.7
2017-2018*	13.4%	7.1 - 19.8
2019	21.0%	13.5 - 28.6
2020	11.6%	6.3 - 17.0
2021	16.0%	10.3 - 21.6

*Pooled years
Source: UCLA Center for Health Policy Research, Los Angeles, CA. AskCHIS 2001-2021. Ever diagnosed with asthma. Available at <http://ask.chis.ucla.edu>. Exported on August 30, 2022 and November 4, 2022.

Percentage of residents ever diagnosed with diabetes (18+), East Region, San Diego County, 2003-2021



LIVE WELL
SAN DIEGO

Year	Percentage	95% Confidence Interval
2003	6.2%	3.6 - 8.9
2005	9.0%	6.1 - 12.0
2007	5.8%	4.3 - 7.3
2009	4.5%	2.8 - 6.3
2011	10.6%	4.4 - 16.8
2012	7.4%	3.9 - 10.8
2013	6.0%	3.2 - 8.7
2014	11.1%	4.5 - 17.8
2015-2017*	10.7%	5.6 - 15.8
2018	11.7%	5.8 - 17.5
2019	11.9%	6.9 - 16.9
2020	8.3%	4.6 - 11.9
2021	12.9%	6.8 - 19.0

*Pooled years

Source: UCLA Center for Health Policy Research, Los Angeles, CA. AskCHIS 2003-2021. Ever diagnosed with diabetes. Available at <http://ask.chis.ucla.edu>. Exported on August 30, 2022 and November 4, 2022.

Percentage of residents ever diagnosed with heart disease (18+), East Region, San Diego County, 2001-2021



LIVE WELL
SAN DIEGO

Year	Percentage	95% Confidence Interval
2001	8.1%	4.6 - 11.5
2003	10.8%	7.6 - 14.1
2005	8.0%	4.9 - 11.1
2007	8.7%	4.3 - 13.1
2009	5.2%	3.6 - 6.8
2011	6.3%	3.1 - 9.4
2012	9.0%	4.7 - 13.2
2013	4.4%	2.1 - 6.6
2014-2015*	10.7%	5.9 - 15.5
2016-2018*	7.8%	4.7 - 10.9
2019	6.3%	3.7 - 8.9
2020	6.4%	3.8 - 9.0
2021	8.5%	4.5 - 12.5

*Pooled years

Source: UCLA Center for Health Policy Research, Los Angeles, CA. AskCHIS 2001-2021. Ever diagnosed with heart disease. Available at <http://ask.chis.ucla.edu>. Exported on August 30, 2022 and November 4, 2022.

Percentage of residents ever diagnosed with high blood pressure (18+), East Region, San Diego County, 2001-2021



LIVE WELL
SAN DIEGO

Year	Percentage	95% Confidence Interval
2001	27.0%	22.2 - 31.8
2003	23.3%	18.8 - 27.8
2005	28.6%	24.2 - 33.1
2007	29.5%	24.8 - 34.2
2009	25.4%	21.5 - 29.3
2011	20.5%	13.6 - 27.3
2012	32.2%	25.8 - 38.7
2013	32.4%	22.3 - 42.6
2014	35.3%	24.2 - 46.5
2015	33.6%	21.7 - 45.4
2016	31.4%	20.7 - 42.2
2017-2018*	31.9%	17.3 - 46.6
2019	25.4%	18.5 - 32.3
2020	29.3%	21.8 - 36.8
2021	32.5%	25.7 - 39.3

*Pooled years
Source: UCLA Center for Health Policy Research, Los Angeles, CA. AskCHIS 2001-2018. Ever diagnosed with high blood pressure. Available at <http://ask.chis.ucla.edu>. Exported on August 30, 2022. UCLA Center for Health Policy Research, Los Angeles, CA. AskCHIS 2019-2021. Ever diagnosed with high blood pressure - borderline included. Available at <http://ask.chis.ucla.edu>. Exported on August 30, 2022 and November 4, 2022.

Percentage of residents ever diagnosed with asthma (18+), North Central Region, San Diego County, 2001-2021



LIVE WELL
SAN DIEGO

Year	Percentage	95% Confidence Interval
2001	9.7%	6.4 - 12.9
2003	12.8%	9.4 - 16.3
2005	12.6%	9.6 - 15.6
2007	13.1%	8.4 - 17.8
2009	13.7%	9.2 - 18.2
2011-2012*	13.4%	8.2 - 18.5
2013	11.5%	6.7 - 16.3
2014	12.8%	5.8 - 19.7
2015-2016*	14.2%	8.0 - 20.4
2017	15.3%	7.4 - 23.1
2018	19.7%	10.2 - 29.1
2019	16.0%	11.4 - 20.6
2020	14.1%	9.8 - 18.3
2021	17.0%	12.4 - 21.6

*Pooled years

Source: UCLA Center for Health Policy Research, Los Angeles, CA. AskCHIS 2001-2021. Ever diagnosed with asthma. Available at <http://ask.chis.ucla.edu>. Exported on August 30, 2022 and November 4, 2022.

Percentage of residents ever diagnosed with diabetes (18+), North Central Region, San Diego County, 2003-2021



LIVE WELL
SAN DIEGO

Year	Percentage	95% Confidence Interval
2003	4.6%	2.6 - 6.7
2005	4.5%	2.6 - 6.4
2007	3.8%	2.5 - 5.2
2009	7.4%	3.6 - 11.2
2011-2012*	7.3%	4.0 - 10.6
2013	5.7%	3.1 - 8.3
2014-2018*	6.3%	4.0 - 8.7
2019-2020*	4.0%	2.3 - 5.7
2021	8.8%	6.4 – 11.2

*Pooled years

Source: UCLA Center for Health Policy Research, Los Angeles, CA. AskCHIS 2003-2021. Ever diagnosed with diabetes. Available at <http://ask.chis.ucla.edu>. Exported on August 30-31, 2022 and November 4, 2022.

Percentage of residents ever diagnosed with heart disease (18+), North Central Region, San Diego County, 2001-2021



LIVE WELL
SAN DIEGO

Year	Percentage	95% Confidence Interval
2001	5.1%	3.2 - 7.1
2003	4.7%	3.1 - 6.2
2005	6.6%	4.4 - 8.8
2007	5.1%	3.5 - 6.7
2009	5.2%	3.8 - 6.6
2011-2012*	4.9%	3.0 - 6.9
2013	5.0%	2.9 - 7.1
2014	4.1%	1.7 - 6.4
2015-2017*	6.0%	2.7 - 9.4
2018-2019*	5.1%	2.8 - 7.3
2020	6.0%	3.3 - 8.7
2021	4.9%	3.0 - 6.7

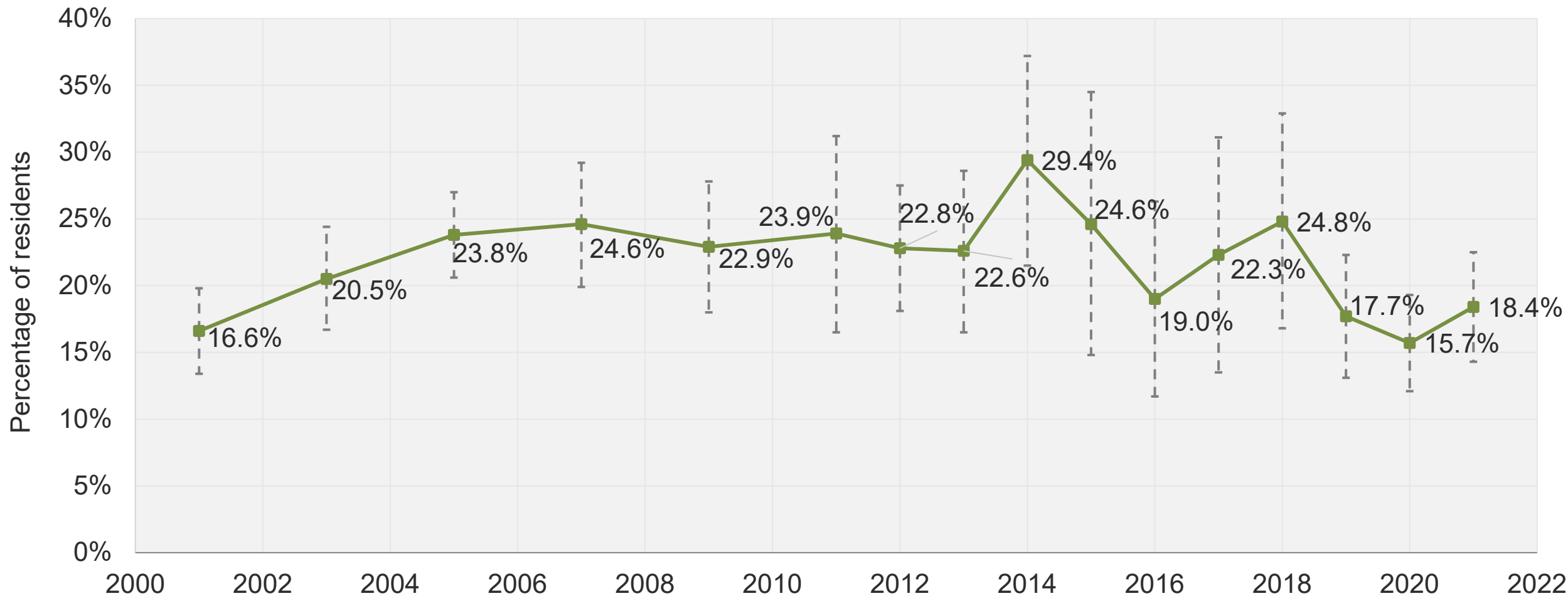
*Pooled years

Source: UCLA Center for Health Policy Research, Los Angeles, CA. AskCHIS 2001-2021. Ever diagnosed with heart disease. Available at <http://ask.chis.ucla.edu>. Exported on August 31, 2022 and November 4, 2022.

Percentage of residents ever diagnosed with high blood pressure (18+), North Central Region, San Diego County, 2001-2021



LIVE WELL
SAN DIEGO



Gray dotted lines indicate 95% confidence intervals.

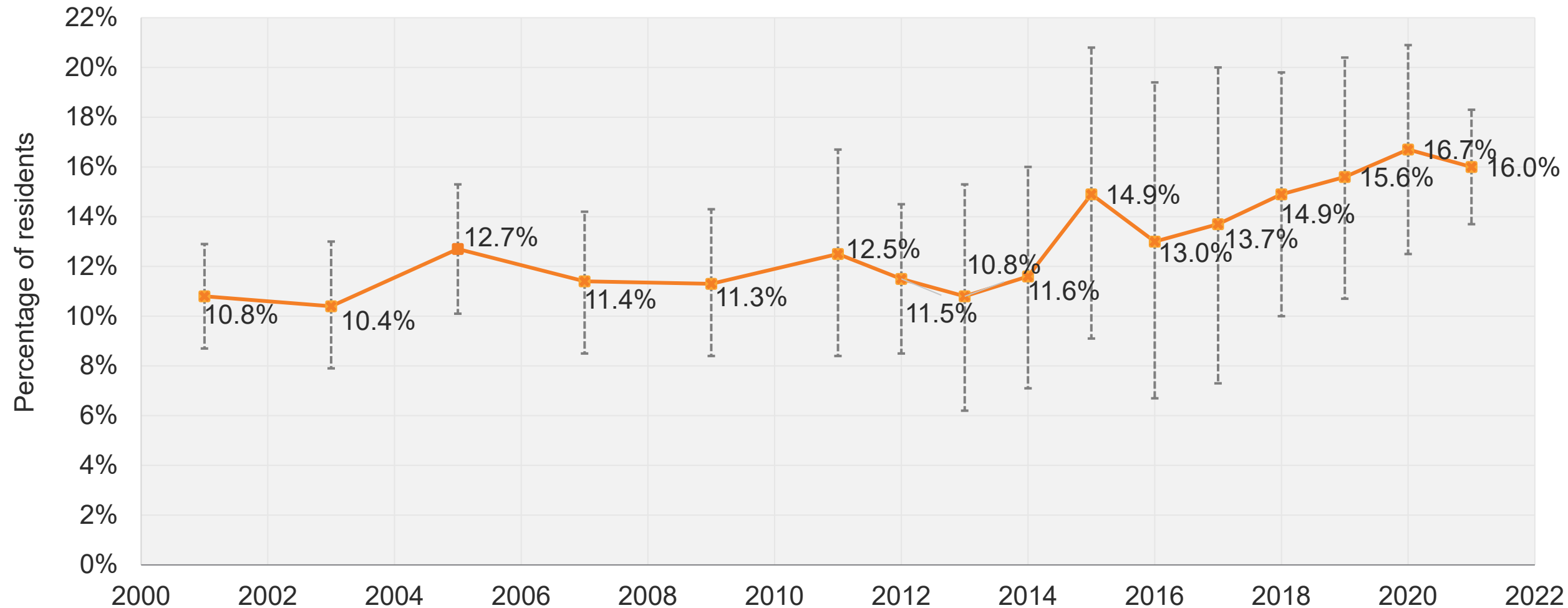
Source: UCLA Center for Health Policy Research, Los Angeles, CA. AskCHIS 2001-2018. Ever diagnosed with high blood pressure. Available at <http://ask.chis.ucla.edu>. Exported on August 31, 2022. UCLA Center for Health Policy Research, Los Angeles, CA. AskCHIS 2019-2021. Ever diagnosed with high blood pressure - borderline included. Available at <http://ask.chis.ucla.edu>. Exported on August 31, 2022 and November 4, 2022.

Prepared by County of San Diego, Health and Human Services Agency, Public Health Services, Community Health Statistics Unit, 11/2022.

Percentage of residents ever diagnosed with asthma (18+), North Coastal Region and North Inland Region, San Diego County, 2001-2021



LIVE WELL
SAN DIEGO



Percentage of residents ever diagnosed with diabetes (18+), North Coastal Region and North Inland Region, San Diego County, 2003-2021



LIVE WELL
SAN DIEGO

Year	Percentage	95% Confidence Interval
2003	4.8%	3.1 - 6.4
2005	4.4%	3.0 - 5.8
2007	6.0%	4.3 - 7.7
2009	6.9%	3.4 - 10.4
2011	6.5%	4.0 - 8.9
2012	6.0%	3.9 - 8.1
2013	9.5%	5.6 - 13.3
2014	5.1%	3.1 - 7.1
2015-2016*	6.9%	3.8 - 10.0
2017-2018*	8.6%	5.2 - 12.0
2019	8.2%	5.0 - 11.4
2020	7.2%	5.3 - 9.0
2021	5.8%	3.6 - 8.0

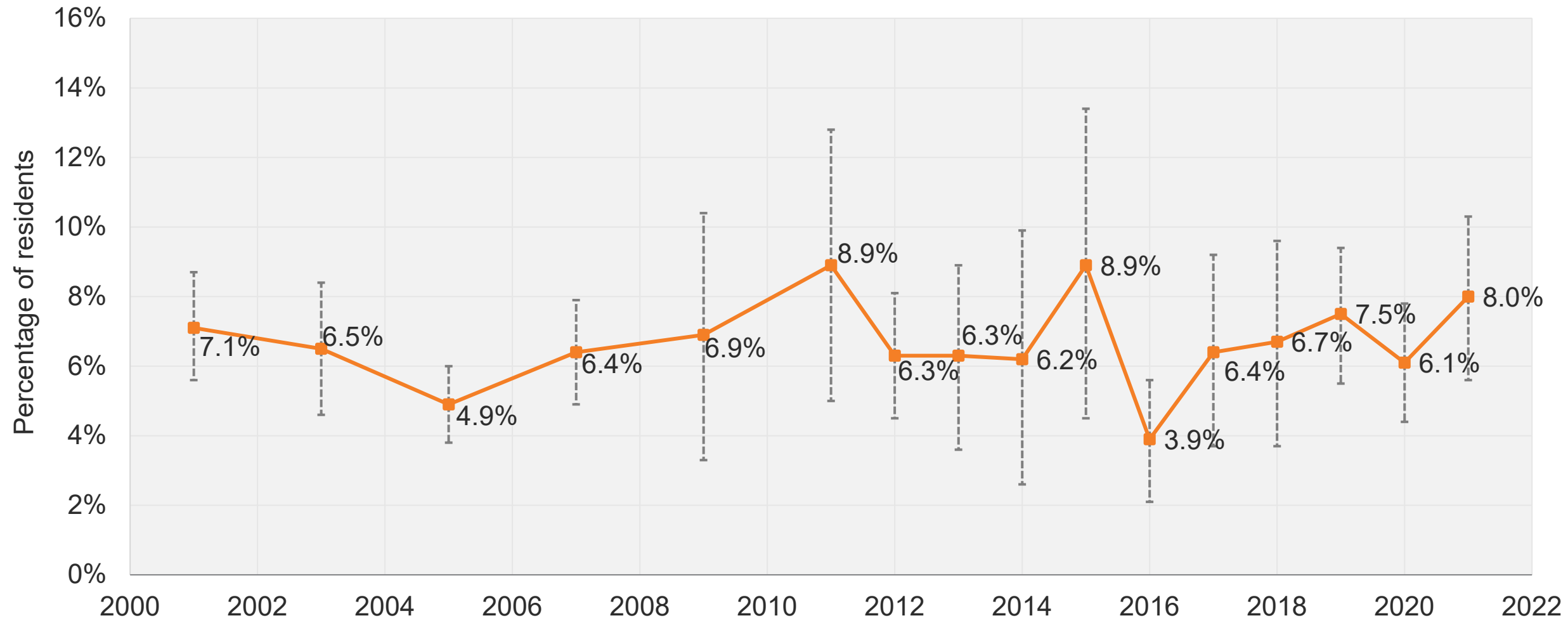
*Pooled years

Source: UCLA Center for Health Policy Research, Los Angeles, CA. AskCHIS 2003-2021. Ever diagnosed with diabetes. Available at <http://ask.chis.ucla.edu>. Exported on September 2, 2022 and November 7, 2022.

Percentage of residents ever diagnosed with heart disease (18+), North Coastal Region and North Inland Region, San Diego County, 2001-2021



LIVE WELL
SAN DIEGO

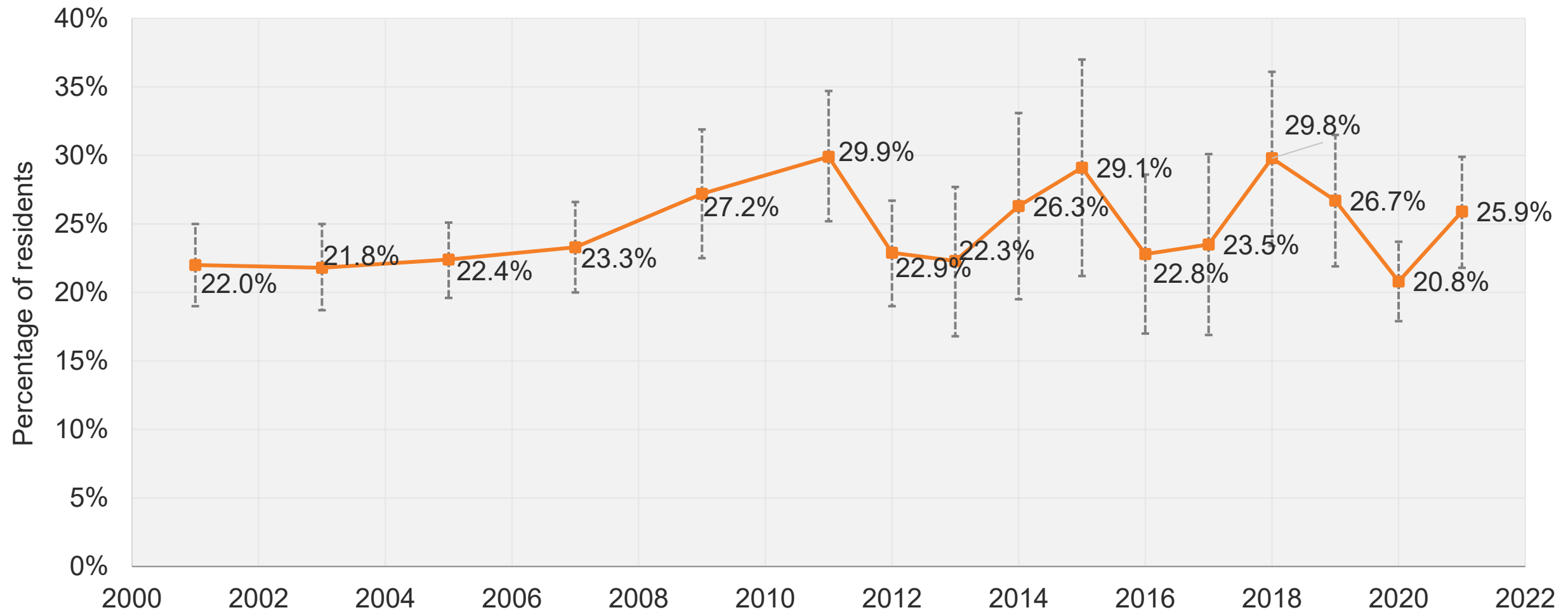


Gray dotted lines indicate 95% confidence intervals.
Source: UCLA Center for Health Policy Research, Los Angeles, CA. AskCHIS 2001-2021. Ever diagnosed with heart disease. Available at <http://ask.chis.ucla.edu>. Exported on September 2, 2022 and November 7, 2022.
Prepared by County of San Diego, Health and Human Services Agency, Public Health Services, Community Health Statistics Unit, 11/2022.

Percentage of residents ever diagnosed with high blood pressure (18+), North Coastal Region and North Inland Region, San Diego County, 2001-2021



LIVE WELL
SAN DIEGO



Gray dotted lines indicate 95% confidence intervals.
Source: UCLA Center for Health Policy Research, Los Angeles, CA. AskCHIS 2001-2018. Ever diagnosed with high blood pressure. Available at <http://ask.chis.ucla.edu>. Exported on September 2, 2022. UCLA Center for Health Policy Research, Los Angeles, CA. AskCHIS 2019-2021. Ever diagnosed with high blood pressure - borderline included. Available at <http://ask.chis.ucla.edu>. Exported on September 2, 2022 and November 7, 2022.
Prepared by County of San Diego, Health and Human Services Agency, Public Health Services, Community Health Statistics Unit, 11/2022.

Percentage of residents ever diagnosed with asthma (18+), South Region, San Diego County, 2001-2021



LIVE WELL
SAN DIEGO

Year	Percentage	95% Confidence Interval
2001	9.2%	5.7 - 12.7
2003	3.9%	1.7 - 6.1
2005	9.0%	5.6 - 12.3
2007	13.0%	8.7 - 17.3
2009	8.9%	5.3 - 12.5
2011-2012*	10.3%	6.5 - 14.0
2013	17.4%	8.7 - 26.0
2014	22.4%	10.6 - 34.2
2015-2016*	20.3%	12.1 - 28.4
2017	12.9%	6.8 - 19.0
2018	25.7%	11.9 - 39.5
2019	11.6%	6.7 - 16.5
2020	9.6%	6.1 - 13.1
2021	11.7%	7.6 - 15.9

*Pooled years

Source: UCLA Center for Health Policy Research, Los Angeles, CA. AskCHIS 2001-2021. Ever diagnosed with asthma. Available at <http://ask.chis.ucla.edu>. Exported on August 31, 2022 and November 4, 2022.

Percentage of residents ever diagnosed with diabetes (18+), South Region, San Diego County, 2003-2021



LIVE WELL
SAN DIEGO

Year	Percentage	95% Confidence Interval
2003	7.7%	3.5 - 11.8
2005	5.0%	3.0 - 7.0
2007	8.3%	5.9 - 10.6
2009	9.5%	5.5 - 13.5
2011	8.2%	3.7 - 12.7
2012	11.5%	7.0 - 15.9
2013	14.2%	6.5 - 22.0
2014	8.7%	5.9 - 11.4
2015-2016*	13.7%	7.7 - 19.8
2017-2019*	14.6%	8.3 - 20.8
2020	9.5%	6.0 - 13.0
2021	10.3%	7.2 – 13.4

*Pooled years

Source: UCLA Center for Health Policy Research, Los Angeles, CA. AskCHIS 2003-2021. Ever diagnosed with diabetes. Available at <http://ask.chis.ucla.edu>. Exported on August 31, 2022 and November 4, 2022.

Percentage of residents ever diagnosed with heart disease (18+), South Region, San Diego County, 2001-2021



LIVE WELL
SAN DIEGO

Year	Percentage	95% Confidence Interval
2001	5.6%	3.0 - 8.2
2003	5.3%	2.6 - 8.0
2005	4.9%	2.6 - 7.2
2007	7.1%	4.9 - 9.2
2009	5.4%	2.8 - 7.9
2011-2012*	4.3%	2.4 - 6.2
2013-2014*	8.4%	4.6 - 12.2
2015-2018*	6.6%	3.7 - 9.5
2019	4.7%	1.9 - 7.5
2020	7.0%	3.4 - 10.6
2021	7.3%	3.6 – 10.9

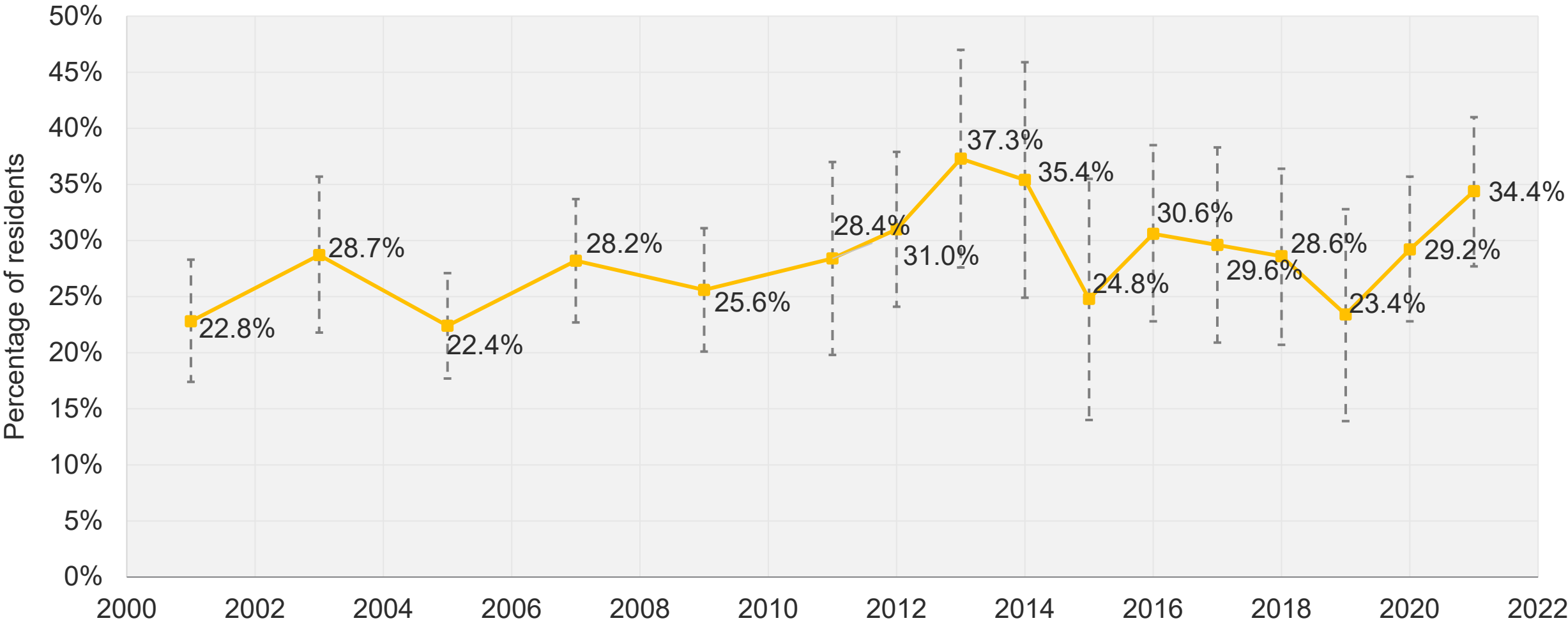
*Pooled years

Source: UCLA Center for Health Policy Research, Los Angeles, CA. AskCHIS 2001-2021. Ever diagnosed with heart disease. Available at <http://ask.chis.ucla.edu>. Exported on August 31, 2022 and November 4, 2022.

Percentage of residents ever diagnosed with high blood pressure (18+), South Region, San Diego County, 2001-2021



LIVE WELL
SAN DIEGO



Gray dotted lines indicate 95% confidence intervals.
Source: UCLA Center for Health Policy Research, Los Angeles, CA. AskCHIS 2001-2018. Ever diagnosed with high blood pressure. Available at <http://ask.chis.ucla.edu>. Exported on August 31, 2022. UCLA Center for Health Policy Research, Los Angeles, CA. AskCHIS 2019-2021. Ever diagnosed with high blood pressure - borderline included. Available at <http://ask.chis.ucla.edu>. Exported on August 31, 2022 and November 4, 2022.
Prepared by County of San Diego, Health and Human Services Agency, Public Health Services, Community Health Statistics Unit, 11/2022.



Health Behaviors in San Diego County, 2015-2020



COUNTY OF SAN DIEGO
HHSA
HEALTH AND HUMAN SERVICES AGENCY



Percentage of residents who binge drank in the past 30 days (18+), San Diego County, 2015-2020



LIVE WELL
SAN DIEGO

Year	Percentage	95% Confidence Interval
2015	16.1%	13.6 - 18.7
2016	17.9%	15.0 - 20.8
2017-2018*	17.8%	15.5 - 20.1
2019-2020*	16.6%	13.7 - 19.4

*Pooled years
Source: Centers for Disease Control and Prevention (CDC). The Behavioral Risk Factor Surveillance System (BRFSS), 2015-2020.

Percentage of residents who received a flu shot in the past 12 months (18+), San Diego County, 2015-2020



LIVE WELL
SAN DIEGO

Year	Percentage	95% Confidence Interval
2015	33.6%	30.4 - 36.9
2016	30.4%	27.0 - 33.8
2017-2018*	40.3%	37.1 - 43.5
2019-2020*	49.8%	45.9 - 53.7

*Pooled years

Source: Centers for Disease Control and Prevention (CDC). The Behavioral Risk Factor Surveillance System (BRFSS), 2015-2020.

Percentage of residents who were current smokers (18+), San Diego County, 2015-2020



LIVE WELL
SAN DIEGO

Year	Percentage	95% Confidence Interval
2015	9.4%	7.4 - 11.5
2016	9.9%	7.7 - 12.1
2017-2018*	11.3%	9.3 - 13.3
2019-2020*	9.4%	7.0 - 11.8

*Pooled years

Source: Centers for Disease Control and Prevention (CDC). The Behavioral Risk Factor Surveillance System (BRFSS), 2015-2020.

Contact Us



LIVE WELL
SAN DIEGO

County of San Diego
Health and Human Services Agency
Public Health Services
Community Health Statistics Unit

619-692-6667

www.SDHealthStatistics.com



On May 17, 2016, the County of San Diego Health and Human Services Agency Division of Public Health Services received accreditation from the Public Health Accreditation Board.