

Results of Survey of Regional Community Leadership Teams

After Regional Community Health Assessment Presentations 2022

January through March 2022

EXECUTIVE SUMMARY:

This survey of the regional Community Leadership Team (CLT) is conducted as part of the annual Community Health Assessment (CHA) process. The survey response numbers are relatively low, however, there is consistency in responses across the regions. The survey reveals a focus on economic, housing, and behavioral health issues.

- Sectors that were the most represented included Community-Based and Faith-Based Organizations, Healthcare, Education, and Cities and Government. It is noteworthy that the Youth Sector were 13% of all respondents, reflecting growing participation among this Sector in *Live Well San Diego* and related community activities.
- For *social determinants of health*, the CLTs indicated that **economic instability, lack of resources, the impact of COVID-19, Unhealthy behaviors: Obesity, and Unhealthy Behaviors: Substances** were having the biggest impact in their Regions.
- For *priority issues*, each of the CLT respondents selected the same three priorities as the top issues. These are **housing insecurity, homelessness, and mental health issues**. Socio-economic status, and drug and alcohol use disorders also appear to be near the top issues of concerns. While chronic disease remains a top priority among regions, the focus has been shifting in the last few years to addressing social determinants of health contributing to chronic disease. This is evident in the [Community Enrichment Plans FY 2019-21](#) and in the results of this survey. CLT priorities go beyond the Building Better Health component of *Live Well San Diego* and extend to Living Safely and Thriving.

BACKGROUND:

The County of San Diego, Health and Human Services Agency (HHS) conducts an ongoing CHA, and each cycle of the CHA begins with a Regional Data Presentation by Public Health Service's Community Health Statistics Unit to each of the HHS region's CLTs. These presentations, which feature a wide range of health and well-being data, were conducted at virtual Leadership Team meetings between January and March of 2022. Immediately after each Regional Data Presentation, a short survey was administered. This report summarizes the results.

HHS has five service delivery regions, and each has a regional *Live Well San Diego* CLT to engage and enlist San Diego's diverse communities in the collective effort to improve the health

and well-being of the region. The purpose of the survey is to gather input from CLT members, after the Regional Presentations, on their perceptions of needs and priorities for their region.

The CHA is part of the community planning model that HHSA follows, called Mobilizing for Action through Planning and Partnerships (MAPP). MAPP includes several assessments that inform planning efforts and ultimately contribute to Community Enrichment Plans adopted by the CLT.

These Regional Data Presentations mark the beginning of a new planning cycle after the response to the COVID-19 pandemic absorbed much of the HHSA's attention. The Leadership Teams are meeting again and re-starting their planning efforts. The work in the regions, including support to the CLTs, is now under the Office of Equitable Communities, a new HHSA office within the Homeless Solutions and Equitable Communities. Public Health Services provides data and planning support.

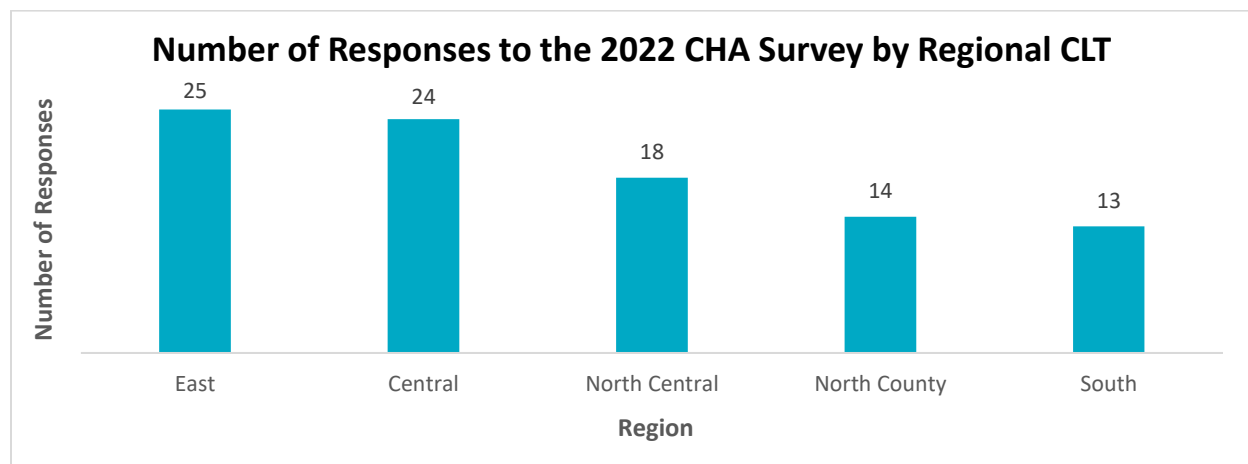
The survey was conducted through an online service called Survey Monkey beginning at the end of January 2022 through the end of March 2022. Survey participants were asked what they saw as the social determinants of health that had the greatest impact on their communities or region, and what they saw as top priorities and actions to address these challenges. **A copy of the Survey appears as Appendix I and the terminology used is defined on the survey itself.**

The Community Health Statistics Unit has a website where products of the CHA are posted on an ongoing basis. This website is intended to provide easy access to data the regions and CLTs may need for their community planning activities: [Community Health Assessments \(sandiegocounty.gov\)](https://sandiegocounty.gov)

SURVEY AND RESPONSE LIMITATIONS:

Respondents were asked to select all the CLTs that they participate on; a total of 94 responses were collected from 74 community leaders for all regions. (**Figure 1**). Due to the relatively low number of responses in each region, the results offer insights but may not accurately describe the perspectives of all members of the CLT. However, there is consistency across the CLTs in their responses, suggesting some consistency in priorities among all community partners.

Figure 1: Number of Responses to the 2022 CHA Survey by Regional CLT



ALL REGIONS

ALL REGION RESULTS:

- **Sectors Most Represented in the Survey:** Community-Based and Faith-Based Organizations, Healthcare, Education, and Cities and Government. These sectors represented two-thirds of all respondents. (**Figure 2**)
- **Top 5 Social Determinants of Health Significantly Impacting Communities:** Economic instability, Lack of resources, Impact of COVID-19, Unhealthy behaviors: Obesity, Unhealthy behaviors: Substances (**Figure 3**)
- **Top 3 Priorities:** Housing insecurity, Homelessness, and Mental health issues (**Figure 4**)

Figure 2: All Regions: Respondents by Sector

Survey Question: What is your sector (Check all that apply)?

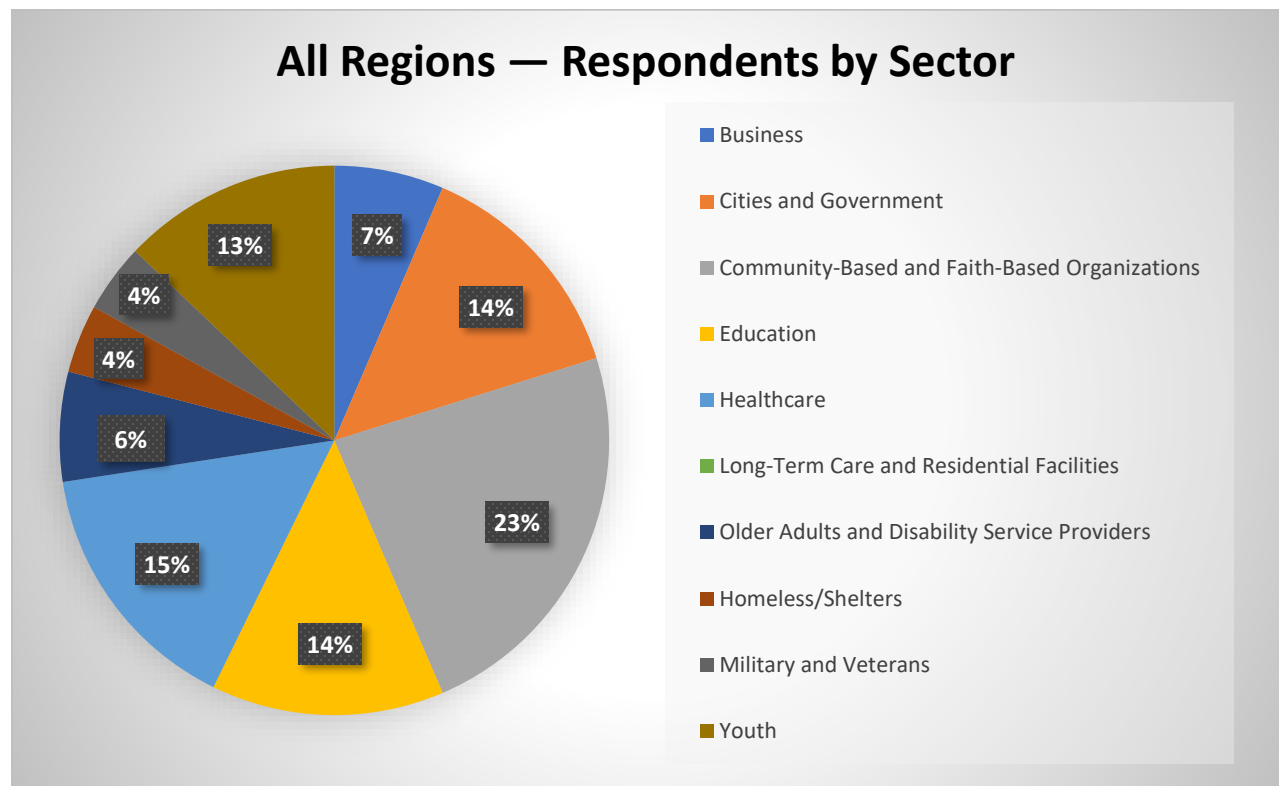
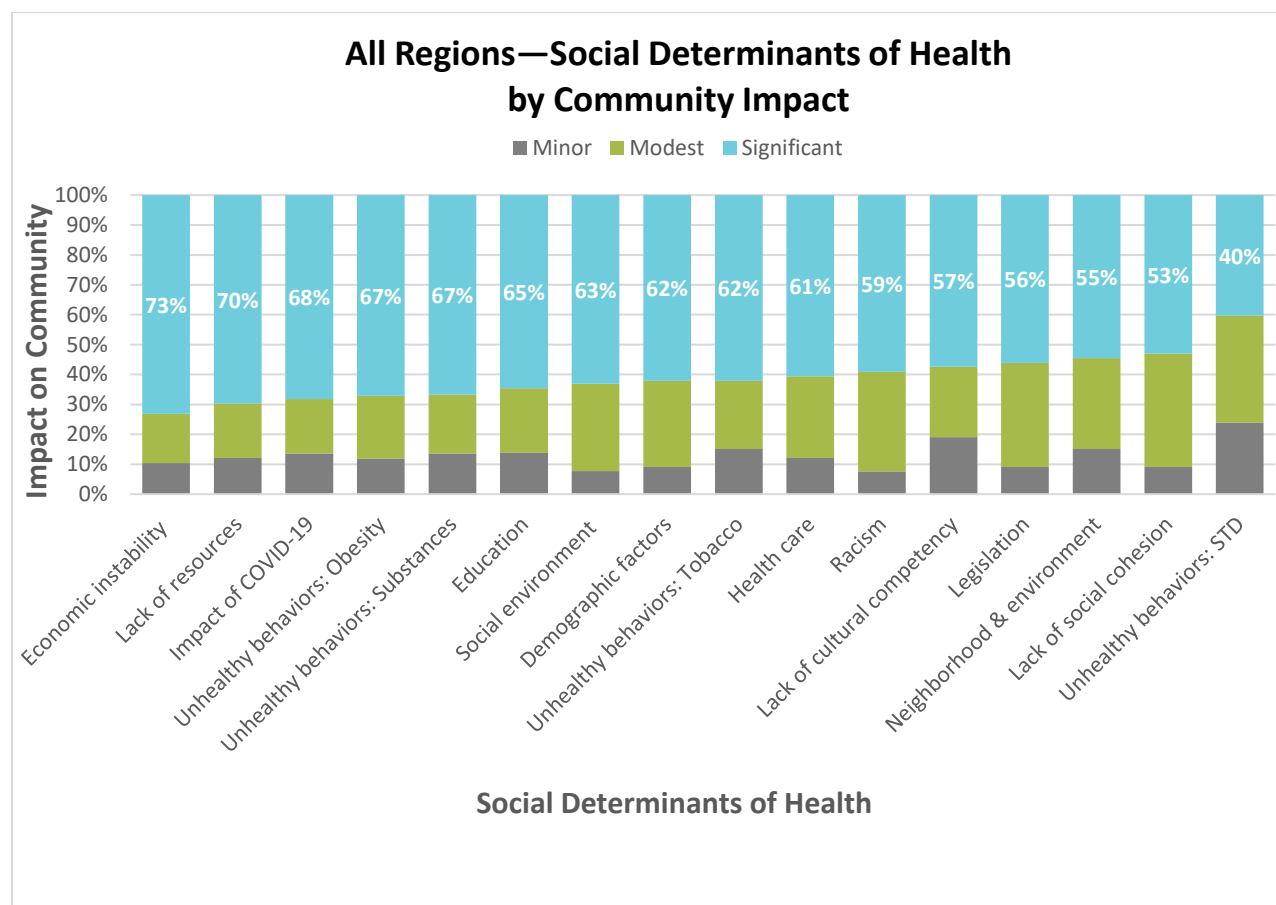


Figure 3: All Regions—Social Determinants of Health by Community Impact

Survey Question: *To what degree do you believe EACH of the Social Determinants or conditions listed below impact your community?*




**For data presentation purposes, Minimal and Minor categories were combined into a new category of "Minor", and Significant and Highly Significant categories were combined into a new category of "Significant". "Modest" was unchanged.*

Figure 4: All Regions—Top 10 Priorities

Survey Question: Please identify Priority Issues affecting the health and well-being of your community.

■ Building Better Health ■ Living Safely ■ Thriving

Priority Ranking	Central Region	East Region	North Central Region	North County Region	South Region
Highest  Lowest	Housing insecurity	Homelessness	Homelessness	Housing insecurity	Homelessness
	Homelessness	Housing insecurity	Housing insecurity	Homelessness	Housing insecurity
	Mental health issues	Mental health issues	Mental health issues	Mental health issues	Mental health issues
	Socio-economic status	Socio-economic status	Chronic disease	Chronic disease	Chronic disease
	Chronic disease	Other drug use disorder	Socio-economic status	Physical infrastructure	Socio-economic status
	Crime	Lack of civic engagement	Underemployment	Aging concerns	Underemployment
	Education	Crime	Other drug use disorder	Opioid use	Other drug use disorder
	Underemployment	Education	Education	Other drug use disorder	Education
	Unemployment	Food insecurity	Lack of civic engagement	Education	Unemployment Crime Lack of civic engagement Food Insecurity
	Lack of Civic Engagement	Unemployment	Crime Food Insecurity Unemployment	Food insecurity Lack of public transportation Socio-economic status Underemployment Unemployment	Obesity Alcohol Use Disorders

**These Priorities were selected most among a list of 29 possible Priorities. Respondents for North Central and North County gave some Priorities equal rating, which is why more than 10 priorities are listed. Those Priorities that tied for 10th ranking appear in the Grey Shaded boxes.*

CENTRAL REGION

CENTRAL REGION RESULTS:

- **Sectors Most Represented in the Survey:** Community-Based and Faith-Based, Youth, Cities and Government, and Healthcare (**Figure 5**)
- **Top 5 Social Determinants of Health Significantly Impacting Communities:** Economic instability, Lack of resources, Education, Unhealthy behaviors: Obesity, and Health care (**Figure 6**)
- **Top 5 Priorities:** Housing insecurity, Homelessness, Mental health issues, Socio-economic status, and Chronic disease (**Figure 7**)

Figure 5: Central Region—Respondents by Sector

Survey Question: What is your sector (Check all that apply)?

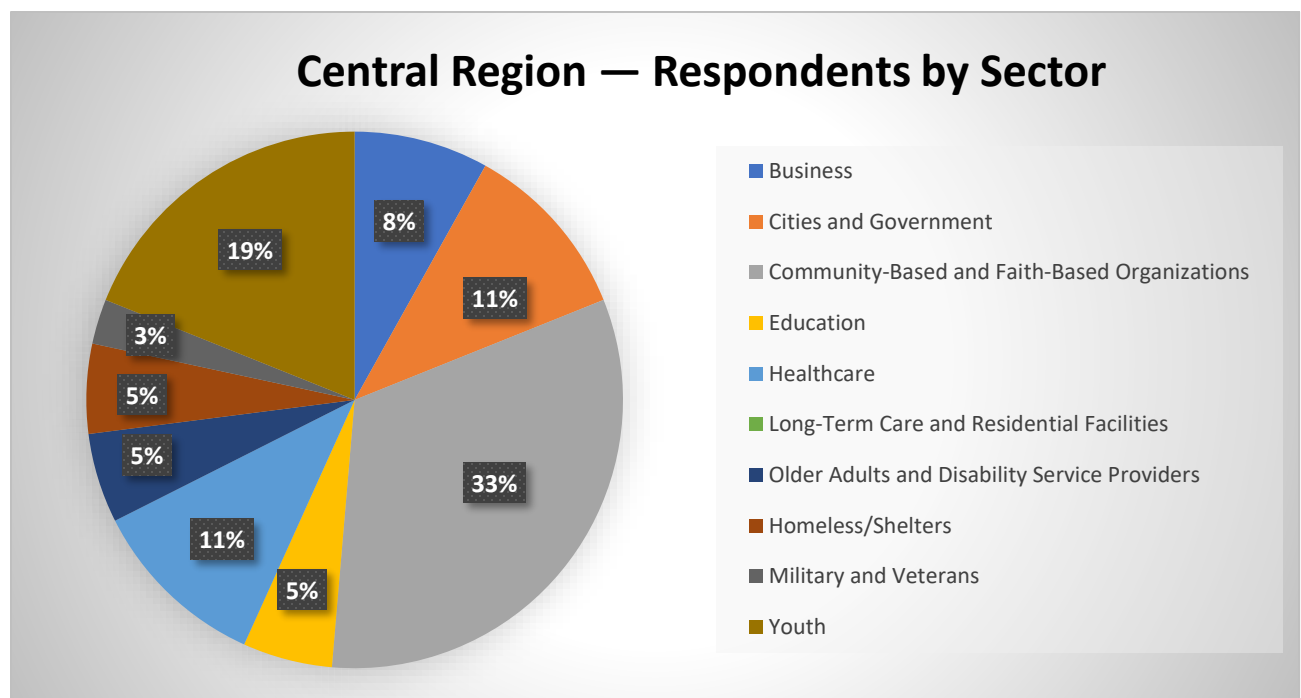
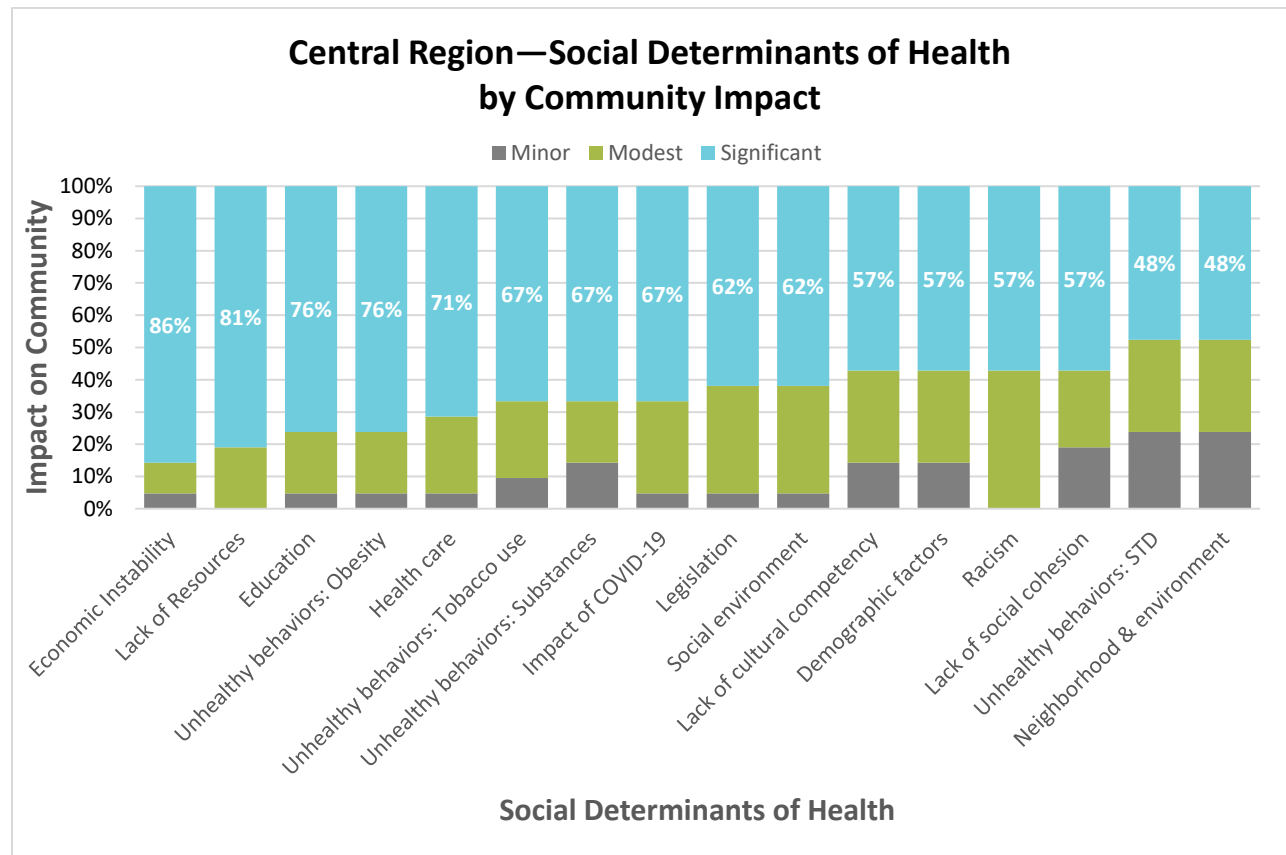


Figure 6: Central Region—Social Determinants of Health by Community Impact

Survey Question: *To what degree do you believe EACH of the Social Determinants or conditions listed below impact your community?*




**For data presentation purposes, Minimal and Minor categories were combined into a new category of "Minor," and Significant and Highly Significant categories were combined into a new category of "Significant". "Modest" was unchanged.*

Figure 7: Central Region—Top 10 Priorities and Top Action(s)

Survey Question: Please identify Priority Issues affecting the health and well-being of your community and the actions that are most needed to make a change in the community.

■ Building Better Health ■ Living Safely ■ Thriving

Priority Ranking	Central Region	Top Action Recommended
Highest  Lowest	Housing insecurity	<ul style="list-style-type: none"> Strategic Partnerships
	Homelessness	<ul style="list-style-type: none"> Strategic Partnerships
	Mental health issues	<ul style="list-style-type: none"> Strategic Partnerships Flexible Sustainable Funding & Resources
	Socio-economic status	<ul style="list-style-type: none"> Strategic Partnerships
	Chronic disease	<ul style="list-style-type: none"> Excellence in Service Delivery
	Crime	<ul style="list-style-type: none"> Strategic Partnerships Flexible & Sustainable Funding & Resources
	Education	<ul style="list-style-type: none"> Flexible & Sustainable Funding & Resources
	Underemployment	<ul style="list-style-type: none"> Strategic Partnerships
	Unemployment	<ul style="list-style-type: none"> Strategic Partnerships
	Lack of Civic Engagement	<ul style="list-style-type: none"> Strategic Partnerships

**These Priorities were selected most among a list of 29 possible Priorities. The Actions that were selected by the most respondents to address each of these Priorities appear here. In some cases, more than one Action was selected.*

EAST REGION

EAST REGION RESULTS:

- **Sectors Most Represented in the Survey:** Community-Based and Faith-Based Organizations, Cities and Government, and Healthcare (**Figure 8**)
- **Top 5 Social Determinants of Health Significantly Impacting Communities:** Unhealthy behaviors: Obesity, Economic instability, Unhealthy behaviors: Tobacco use, Unhealthy behaviors: Substance use and overdose, and Impact of COVID-19 (**Figure 9**)
- **Top 5 Priorities:** Homelessness, Housing insecurity, Mental health issues, Socio-economic status, and Other drug use disorder (**Figure 10**)

Figure 8: East Region—Respondents by Sector

Survey Question: What is your sector (Check all that apply)?

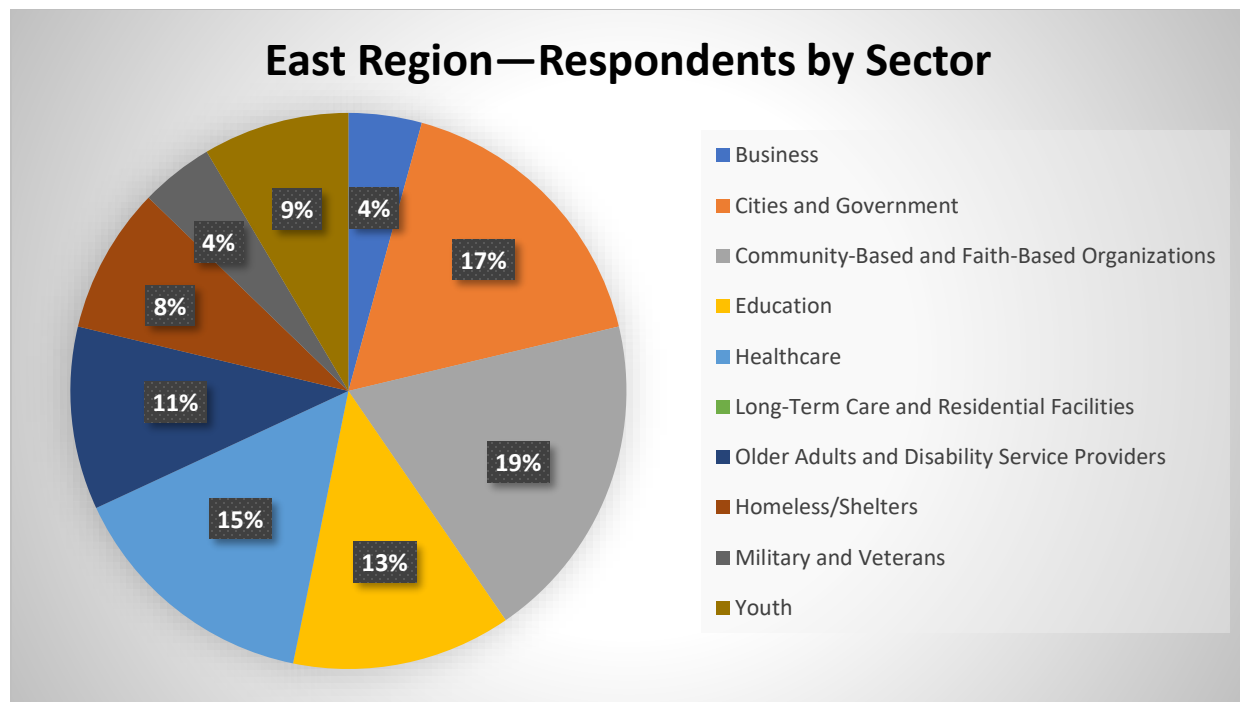
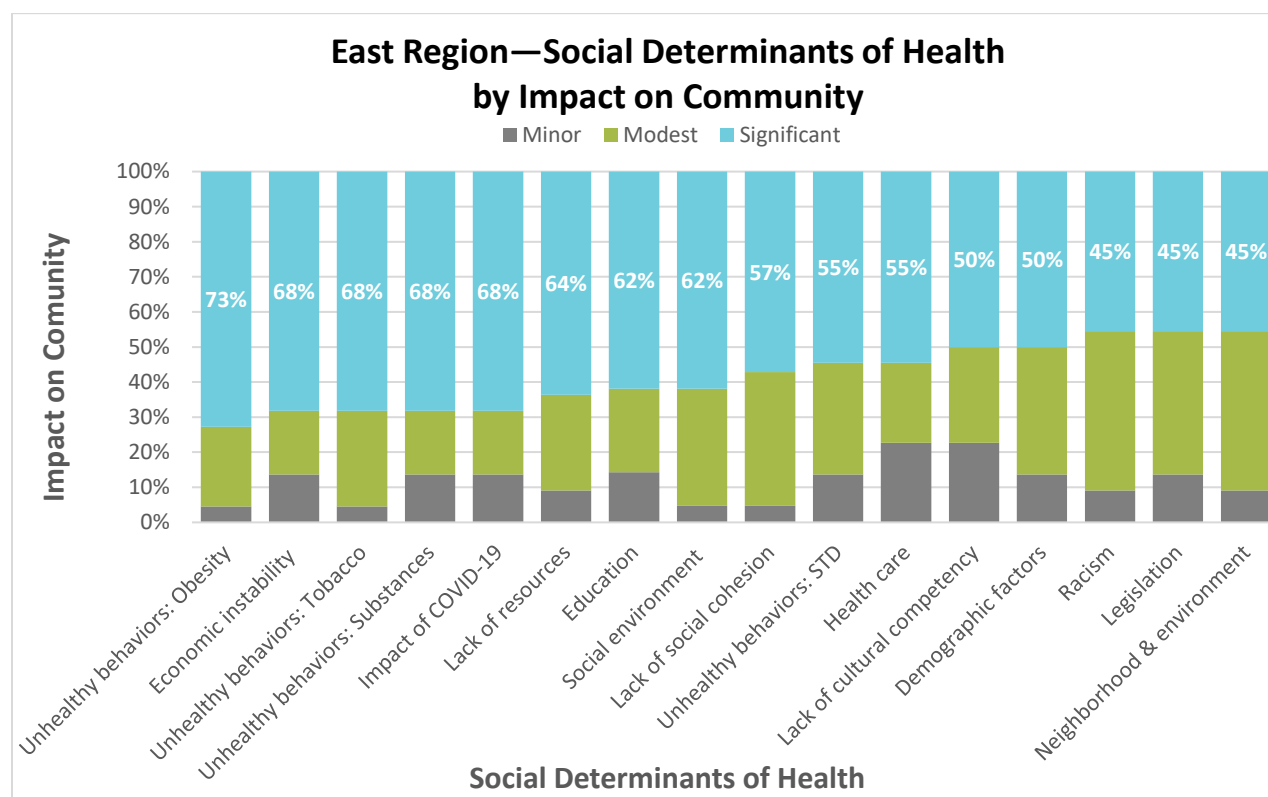


Figure 9: East Region—Social Determinants of Health by Impact on Community

Survey Question: *To what degree do you believe EACH of the Social Determinants or conditions listed below impact your community?*




**For data presentation purposes, Minimal and Minor categories were combined into a new category of "Minor", and Significant and Highly Significant categories were combined into a new category of "Significant". "Modest" was unchanged.*

Figure 10: East Region—Top 10 Priority Issues and Top Action(s)

Survey Question: *Please identify Priority Issues affecting the health and well-being of your community and the Actions that are most needed to make a change in the community.*

■ Building Better Health ■ Living Safely ■ Thriving

Priority Ranking	East Region	Top Action Recommended
Highest  Lowest	Homelessness	<ul style="list-style-type: none"> Strategic Partnerships
	Housing insecurity	<ul style="list-style-type: none"> Flexible & Sustainable Funding & Resources
	Mental health issues	<ul style="list-style-type: none"> Flexible & Sustainable Funding & Resources
	Socio-economic status	<ul style="list-style-type: none"> Strategic Partnerships
	Other drug use disorder	<ul style="list-style-type: none"> Flexible & Sustainable Funding & Resources
	Lack of civic engagement	<ul style="list-style-type: none"> Strong Leadership and Workforce
	Crime	<ul style="list-style-type: none"> Strategic Partnerships
	Education	<ul style="list-style-type: none"> Strategic Partnerships Flexible & Sustainable Funding & Resources
	Food insecurity	<ul style="list-style-type: none"> Excellence in Service Delivery
	Unemployment	<ul style="list-style-type: none"> Strategic Partnerships

**These Priorities were selected most among a list of 29 possible Priorities. The Actions that were selected by the most respondents to address each of these Priorities appear here. In some cases, more than one Action was selected.*

NORTH CENTRAL REGION

NORTH CENTRAL RESULTS:

- **Sectors most Represented in the Survey:** Education, Community-Based and Faith-Based Organizations, Healthcare, Cities and Government, and Youth (**Figure 11**)
- **Top 5 Social Determinants of Health Significantly Impacting Communities:** Legislation, Lack of Cultural Competency, Racism, Economic Instability, Demographic Factors, Impact of COVID-19 (**Figure 12**)
- **Top 5 Priorities:** Homelessness, Housing insecurity, Mental health issues, Chronic Disease, and Socio-economic Status (**Figure 13**)

Figure 11: North Central Region—Respondents by Sector

Survey Question: What is your sector (Check all that apply)?

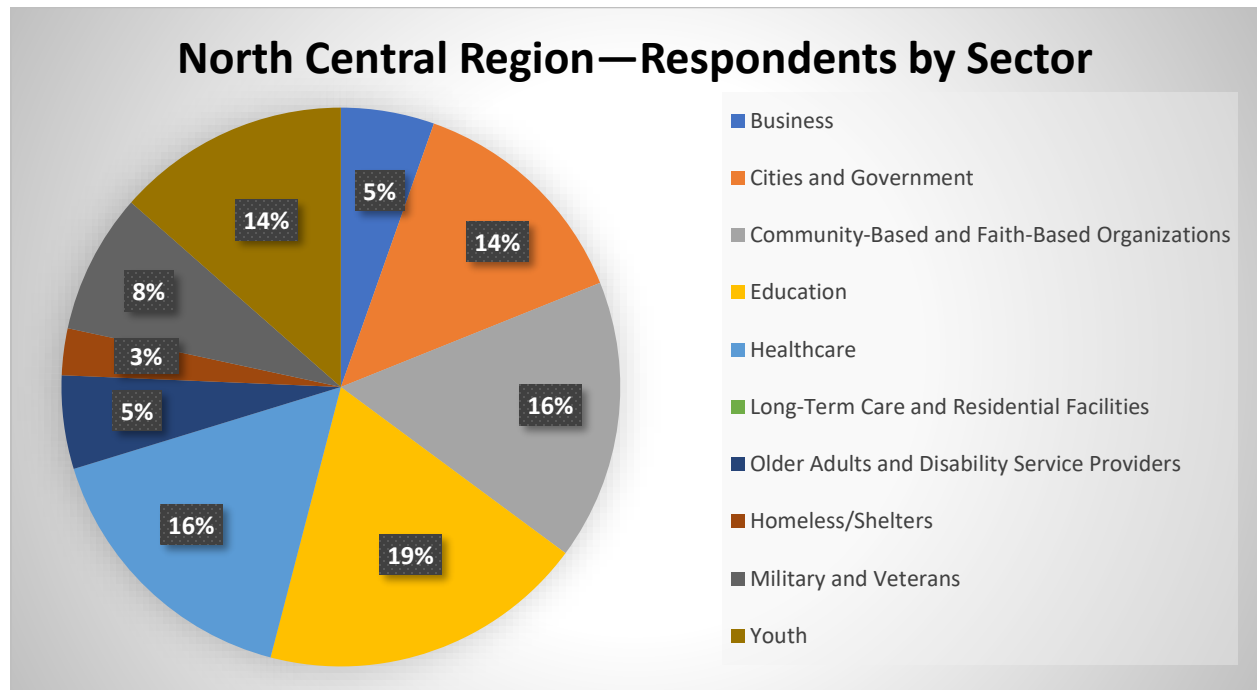
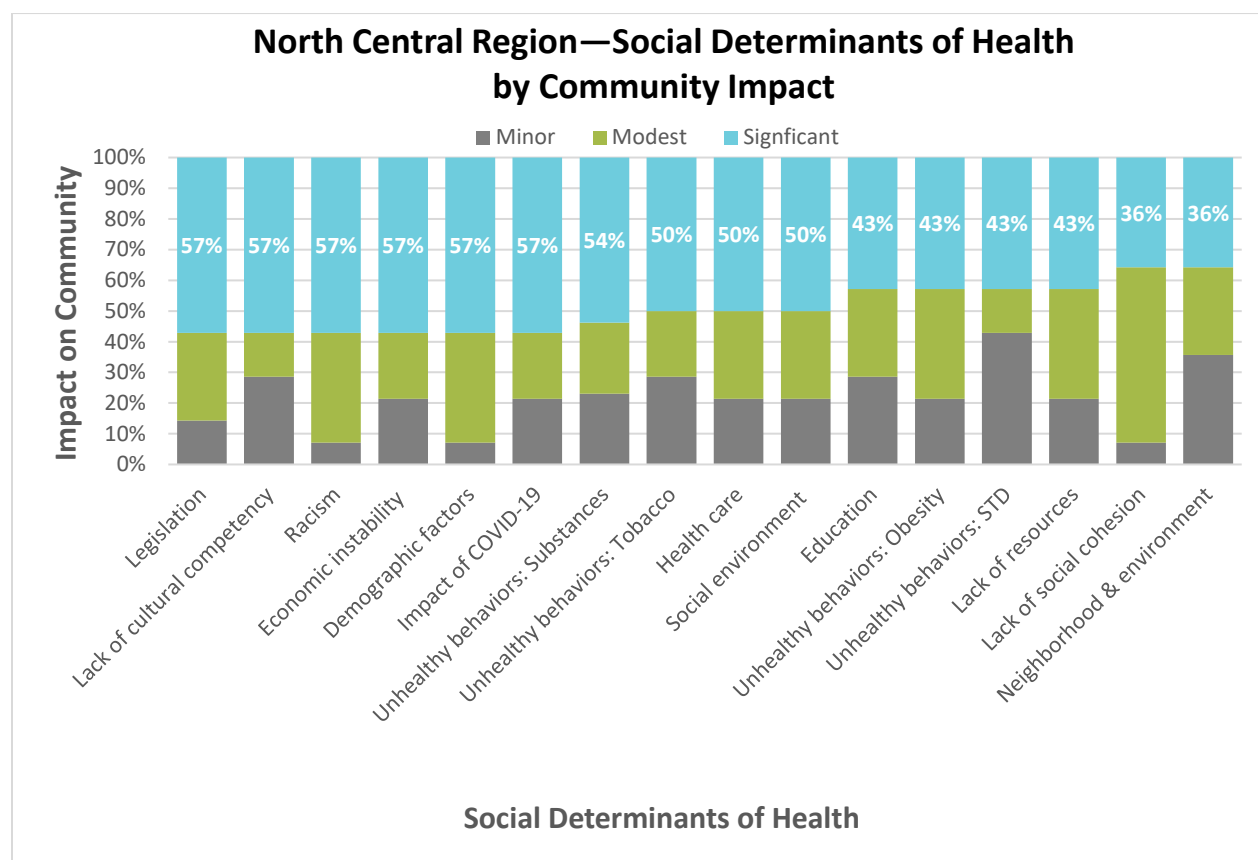


Figure 12: North Central Region—Social Determinants of Health by Community Impact

Survey Question: To what degree do you believe EACH of the Social Determinants or conditions listed below impact your community?




**For data presentation purposes, Minimal and Minor categories were combined into a new category of "Minor", and Significant and Highly Significant categories were combined into a new category of "Significant". "Modest" was unchanged.*

Figure 13: North Central—Top 10 Priority Issues and Top Actions(s)

Survey Question: Please identify Priority Issues affecting the health and well-being of your community and the Actions that are most needed to make a change in the community.

■ Building Better Health ■ Living Safely ■ Thriving

Priority Ranking	North Central Region	Top Action Recommended
Highest  Lowest	Homelessness	<ul style="list-style-type: none"> Strategic Partnerships Flexible & Sustainable Funding & Resources
	Housing Insecurity	<ul style="list-style-type: none"> Flexible & Sustainable Funding & Resources
	Mental health issues	<ul style="list-style-type: none"> Flexible & Sustainable Funding & Resources
	Chronic Disease	<ul style="list-style-type: none"> Strategic Partnerships
	Socio-economic Status	<ul style="list-style-type: none"> Strategic Partnerships
	Underemployment	<ul style="list-style-type: none"> Strong Leadership and Workforce
	Other drug use disorder	<ul style="list-style-type: none"> Flexible and Sustainable Funding and Resources Excellence in Service Delivery
	Education	<ul style="list-style-type: none"> Flexible & Sustainable Funding & Resources
	Lack of civic engagement	<ul style="list-style-type: none"> Strategic Partnerships
	Crime	<ul style="list-style-type: none"> Strategic Partnerships
	Food Insecurity	<ul style="list-style-type: none"> Strategic Partnerships
	Unemployment	<ul style="list-style-type: none"> Strong Leadership and Workforce

**These Priorities were selected most among a list of 29 possible Priorities. Respondents for North Central gave some Priorities equal rating, which is why more than 10 priorities are listed. Those Priorities that tied for 10th ranking appear in the Grey Shaded boxes. The Actions that were selected by the most respondents to address each of these Priorities appear here. In some cases, more than one Action was selected.*

NORTH COUNTY REGIONS

NORTH COUNTY RESULTS:

- **Sectors Most Represented in the Survey:** Cities and Government, Healthcare, and Community-Based and Faith-Based Organizations (**Figure 14**)
- **Top 5 Social Determinants of Health Significantly Impacting Communities:** Economic instability, Unhealthy Behaviors: Substances, Impact of COVID-19, Demographic Factors, Education, Unhealthy Behaviors: Tobacco, and Unhealthy Behaviors: Obesity (**Figure 15**)
- **Top 5 Priorities:** Housing insecurity, Homelessness, Mental health issues, Chronic disease, and Physical infrastructure (**Figure 16**)

Figure 14: North County Regions—Respondents by Sector

Survey Question: What is your sector (Check all that apply)?

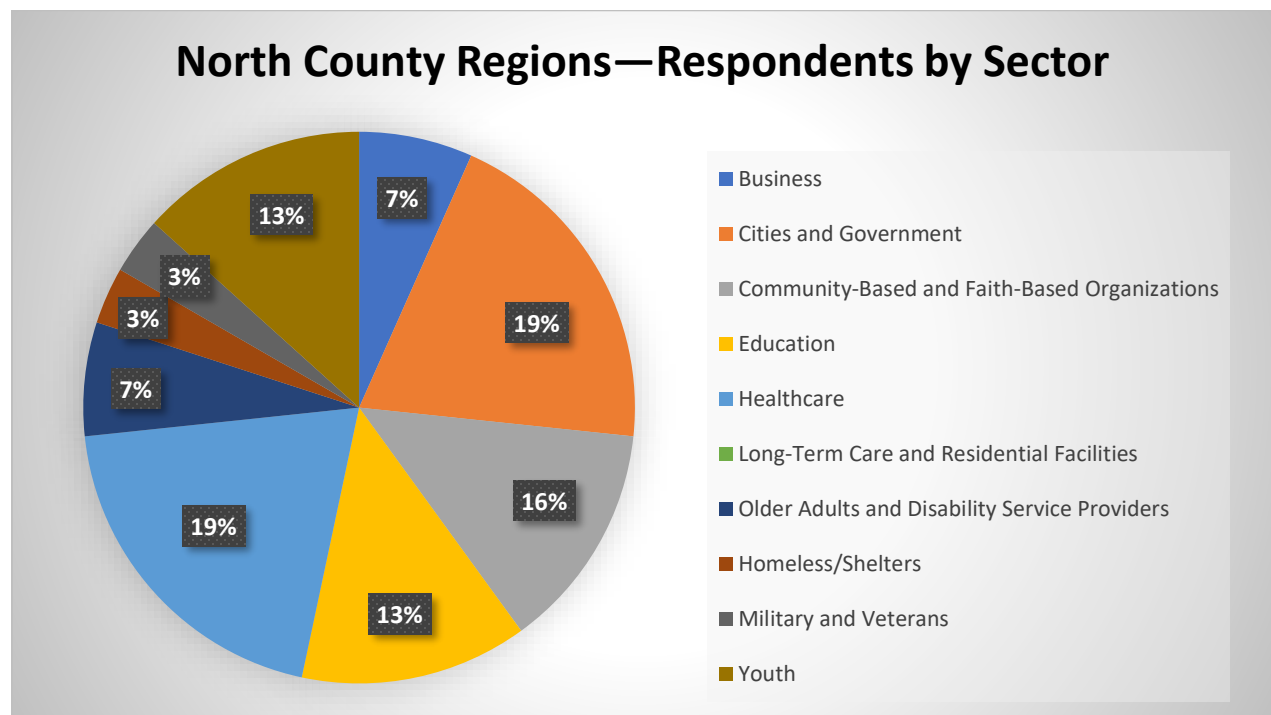
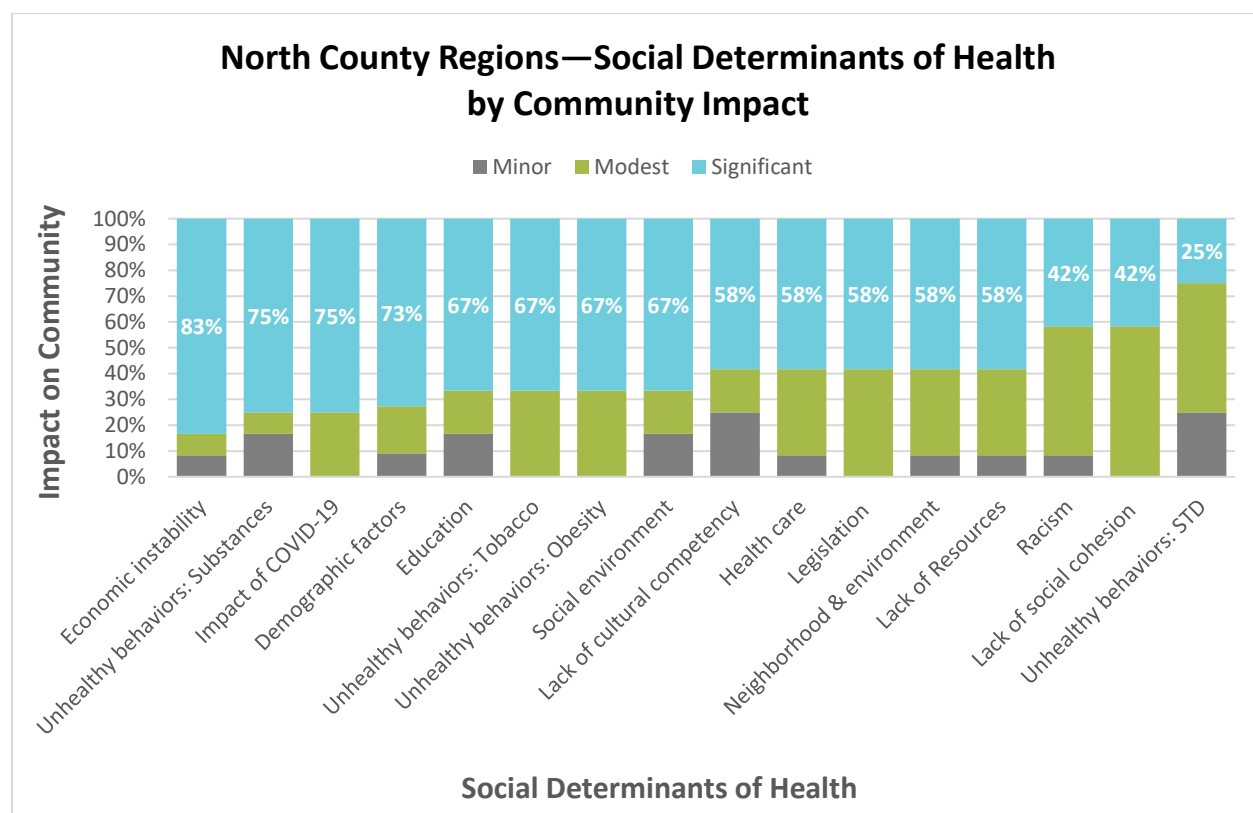


Figure 15: North County Regions—Social Determinants of Health by Community Impact

Survey Question: *To what degree do you believe EACH of the Social Determinants or conditions listed below impact your community?*




**For data presentation purposes, Minimal and Minor categories were combined into a new category of "Minor", and Significant and Highly Significant categories were combined into a new category of "Significant". "Modest" was unchanged.*

Figure 16: North County Regions—Top 10 Priority Issues and Top Action(s)

Survey Question: Please identify Priority Issues affecting the health and well-being of your community and the Actions that are most needed to make a change in the community.

■ Building Better Health ■ Living Safely ■ Thriving

Priority Ranking	North County Region	Top Action Recommended
Highest  Lowest	Housing insecurity	<ul style="list-style-type: none"> Strategic Partnerships
	Homelessness	<ul style="list-style-type: none"> Strategic Partnerships Flexible and Sustainable Funding Resources
	Mental health issues	<ul style="list-style-type: none"> Strategic Partnerships Flexible and Sustainable Funding and Resources Excellence in Service Delivery
	Chronic disease	<ul style="list-style-type: none"> Strategic Partnerships
	Physical infrastructure	<ul style="list-style-type: none"> Strong Leadership and Workforce Strategic Partnerships Flexible and Sustainable Funding and Resources Excellence in Service Delivery
	Aging Concerns	<ul style="list-style-type: none"> Strategic Partnerships
	Opioid use	<ul style="list-style-type: none"> Strong Leadership and Workforce
	Other drug use disorder	<ul style="list-style-type: none"> Strong Leadership and Workforce
	Education	<ul style="list-style-type: none"> Strong Leadership and Workforce
	Food Insecurity	<ul style="list-style-type: none"> Strategic Partnerships
	Lack of public transportation	<ul style="list-style-type: none"> Flexible and Sustainable Funding and Resources
	Socio-economic status	<ul style="list-style-type: none"> Strategic Partnerships Flexible and Sustainable Funding and Resources
	Underemployment	<ul style="list-style-type: none"> Strong Leadership and Workforce Strategic Partnerships Flexible and Sustainable Funding and Resources Data, Metrics, and Analysis
	Unemployment	<ul style="list-style-type: none"> Flexible and Sustainable Funding and Resources Strategic Partnerships

**These Priorities were selected most among a list of 29 possible Priorities. Respondents for North County gave some Priorities equal rating, which is why more than 10 priorities are listed. Those Priorities that tied for 10th ranking appear in the Grey Shaded boxes.*

SOUTH REGION

SOUTH REGION RESULTS:

- **Sectors Most Represented in the Survey:** Cities and Government, Education, and Youth (**Figure 17**)
- **Top 5 Social Determinants of Health Significantly Impacting Communities:** Unhealthy behaviors: Obesity, Unhealthy behaviors: Substance use and overdose, Unhealthy behaviors: Tobacco use, Lack of resources, and Lack of social cohesion (**Figure 18**)
- **Top 5 Priorities:** Homelessness, Housing insecurity, Mental health issues, Chronic disease, and Socio-economic status (**Figure 19**)

Figure 17: South Region—Respondents by Sector

Survey Question: What is your sector (Check all that apply)?

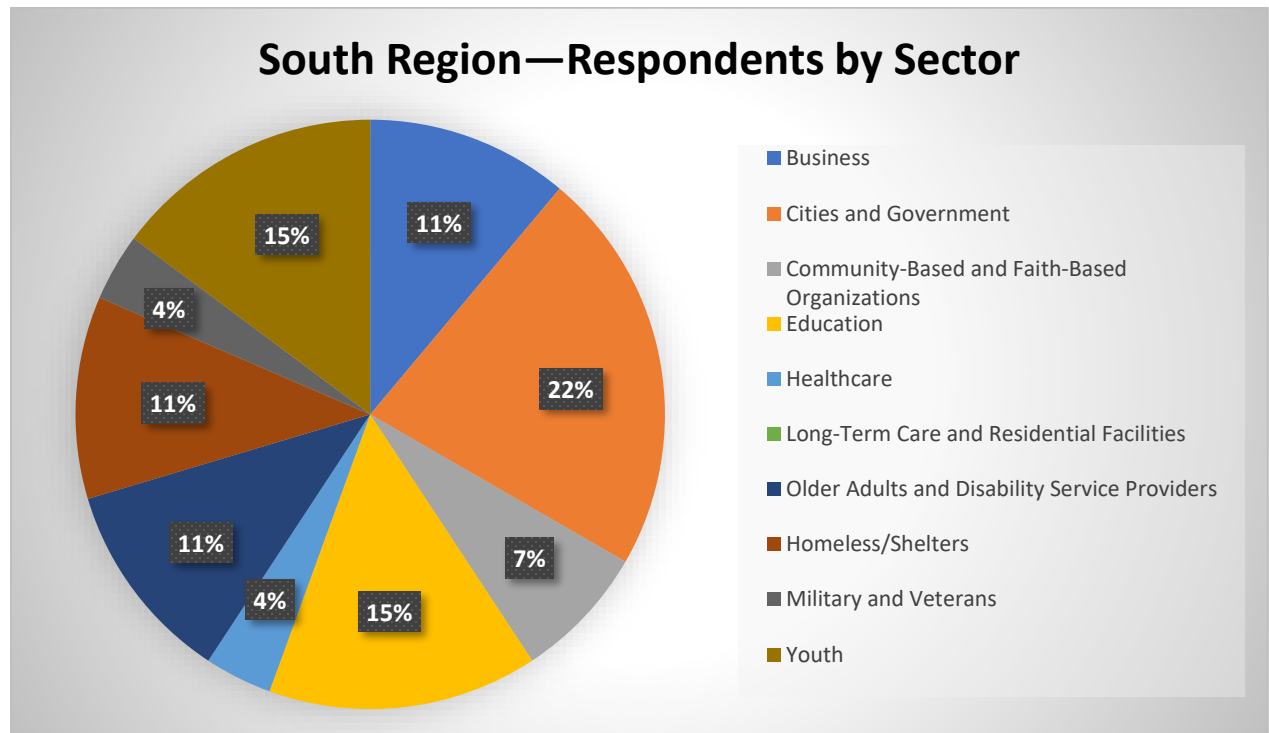
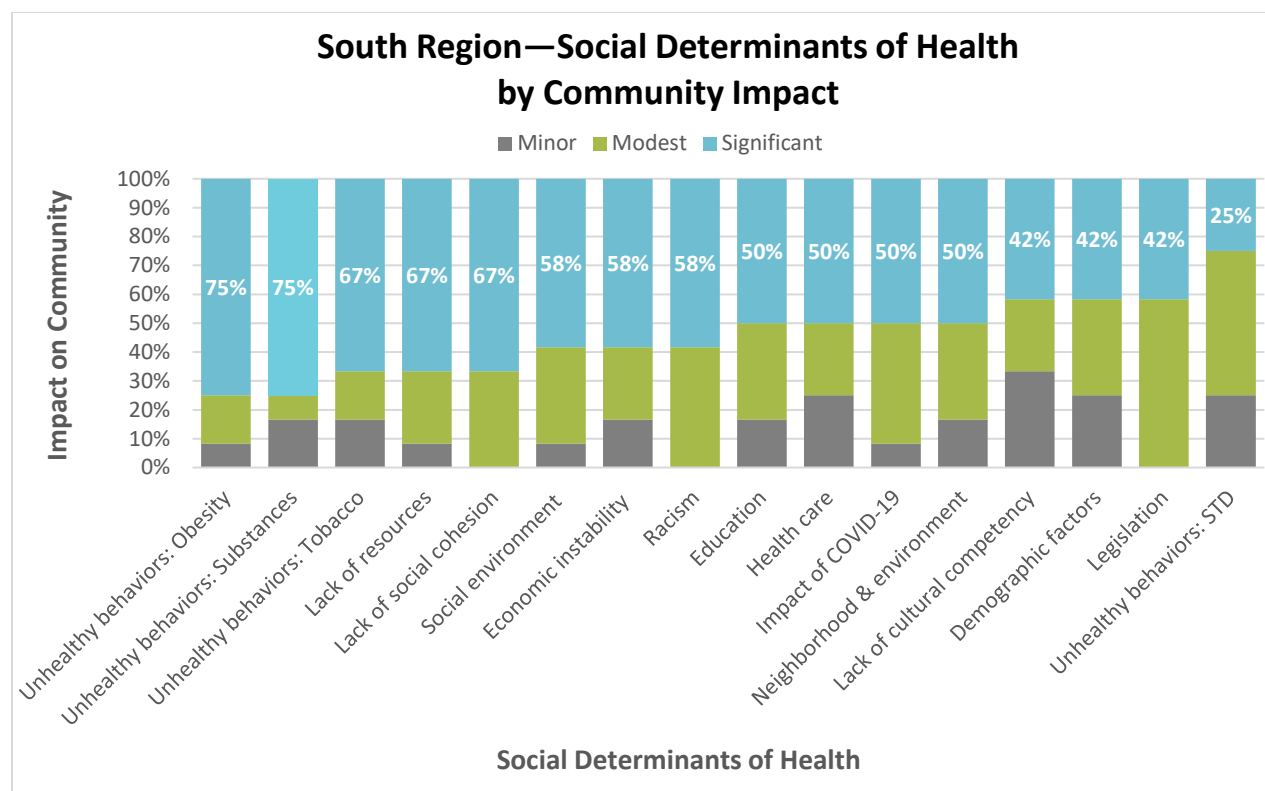


Figure 18: South Region—Social Determinants of Health by Community Impact

Survey Question: *To what degree do you believe EACH of the Social Determinants or conditions listed below impact your community?*




**For data presentation purposes, Minimal and Minor categories were combined into a new category of "Minor", and Significant and Highly Significant categories were combined into a new category of "Significant". "Modest" was unchanged.*

Figure 19: South Region—Top 10 Priority Issues and Top Action(s)

Survey Question: Please identify Priority Issues affecting the health and well-being of your community and the Actions that are most needed to make a change in the community

■ Building Better Health ■ Living Safely ■ Thriving

Priority Ranking	South County Region	Top Action(s) Recommended
Highest  Lowest	Homelessness	<ul style="list-style-type: none"> Strategic Partnerships Flexible & Sustainable Funding & Resources
	Housing insecurity	<ul style="list-style-type: none"> Flexible & Sustainable Funding & Resources
	Mental health issues	<ul style="list-style-type: none"> Flexible & Sustainable Funding & Resources
	Chronic disease	<ul style="list-style-type: none"> Strategic Partnerships
	Socio-economic status	<ul style="list-style-type: none"> Strategic Partnerships
	Underemployment	<ul style="list-style-type: none"> Strong Leadership and Workforce
	Other drug use disorder	<ul style="list-style-type: none"> Flexible & Sustainable Funding & Resources Excellence in Service Delivery
	Education	<ul style="list-style-type: none"> Flexible & Sustainable Funding & Resources
	Unemployment	<ul style="list-style-type: none"> Strong Leadership and Workforce
	Crime	<ul style="list-style-type: none"> Strategic Partnerships
	Lack of civic engagement	<ul style="list-style-type: none"> Strategic Partnerships
	Food Insecurity	<ul style="list-style-type: none"> Strategic Partnerships
	Obesity	<ul style="list-style-type: none"> Strategic Partnerships
	Alcohol Use Disorders	<ul style="list-style-type: none"> Strategic Partnerships Flexible & Sustainable Funding & Resources

**These Priorities were selected most among a list of 29 possible Priorities. Respondents for South County gave some Priorities equal rating, which is why more than 10 priorities are listed. Those Priorities that tied for 9th ranking (Unemployment, Crime, Lack of Civic Engagement, and Food Insecurity) and 10th ranking (Obesity and Alcohol use disorders) appear in the Grey Shaded boxes.*

Appendix 1: Survey Instrument



Community Health Assessment - Regional Update 2022

Thank you for attending the *Live Well* San Diego Community Leadership Team meeting and participating in the data presentation provided by the Community Health Statistics Unit of Public Health Services.

As someone who is a leader or in some way actively engaged in your community, we would like your input regarding the needs of residents to “live well”.

Your responses will inform the community health assessment and help each of the regional Community Leadership Teams plan for the future and contribute to meaningful, positive changes to ensure a resilient future for all.

Please take a few minutes to complete the questions below. Individual responses are confidential, and this survey will take no more than 10 minutes to complete. Thank you!

* 1. Member Information

Name:

Organization:

Title:

Email:

* 2. Community Leadership Team that I participate on:

- ☐ Central
- ☐ East
- ☐ North Central
- ☐ North County
- ☐ South
- ☐ N/A

*** 3. What is your sector (Check all that apply)?**

- ☐ Business
- ☐ Cities and Government
- ☐ Community-Based and Faith-Based Organizations
- ☐ Education
- ☐ Healthcare
- ☐ Long-Term Care and Residential Facilities
- ☐ Older Adults and Disability Service Providers
- ☐ Homeless/Shelters
- ☐ Military and Veterans
- ☐ Youth

Community Health Assessment - Regional Update 2022

According to the Institute of Medicine, social determinants of health (SDOH) are conditions in the environments in which people are born, live, work, play, worship, and age that affect a wide range of health, functioning, and quality-of-life outcomes and risks. Conditions (e.g., social, economic, and physical) in these various environments and settings (e.g., school, church, workplace, and neighborhood) have been referred to as “place.”



Source: Healthy People 2020

Community Health Assessment - Regional Update 2022

Social determinants of health are conditions in the environment in which people are born, live, learn, work, play, and age that affect a wide range of health and quality-of-life outcomes. To what degree do you believe EACH of the Social Determinants or conditions listed below impact your community? Please select the degree of impact from minimal to highly significant for EACH Social Determinant or condition.

Note: If there are other conditions (social determinants) that you believe are important but are not identified here, please feel free to list these conditions at the bottom of the page and check the degree of impact.

Please select the degree of impact for EACH Social Determinant listed below.

* 4. Social Determinant Impacts on Your Community

	Minimal	Minor	Modest	Significant	Highly Significant
Lack of cultural competency	<input type="radio"/>	<input type="radio"/>	<input type="radio"/>	<input type="radio"/>	<input type="radio"/>
Demographic factors (e.g., age, gender, geography, race/ethnicity)	<input type="radio"/>	<input type="radio"/>	<input type="radio"/>	<input type="radio"/>	<input type="radio"/>
Racism (interpersonal and structural)	<input type="radio"/>	<input type="radio"/>	<input type="radio"/>	<input type="radio"/>	<input type="radio"/>
Lack of social cohesion (lack of solidarity between community members)	<input type="radio"/>	<input type="radio"/>	<input type="radio"/>	<input type="radio"/>	<input type="radio"/>
Economic instability (e.g., unemployment, poverty, homelessness)	<input type="radio"/>	<input type="radio"/>	<input type="radio"/>	<input type="radio"/>	<input type="radio"/>
Education (e.g., low literacy, low education levels)	<input type="radio"/>	<input type="radio"/>	<input type="radio"/>	<input type="radio"/>	<input type="radio"/>
Unhealthy behaviors: Tobacco use	<input type="radio"/>	<input type="radio"/>	<input type="radio"/>	<input type="radio"/>	<input type="radio"/>
Unhealthy behaviors: Obesity, lack of opportunity for healthy diet and exercise choices	<input type="radio"/>	<input type="radio"/>	<input type="radio"/>	<input type="radio"/>	<input type="radio"/>

	Minimal	Minor	Modest	Significant	Highly Significant
Unhealthy behaviors: Substance use and overdose	<input type="radio"/>	<input type="radio"/>	<input type="radio"/>	<input type="radio"/>	<input type="radio"/>
Unhealthy behaviors: Sexual activity, sexually transmitted infections, teen pregnancy	<input type="radio"/>	<input type="radio"/>	<input type="radio"/>	<input type="radio"/>	<input type="radio"/>
Health care (e.g., lack of access to preventative health care or disease management, lack of health insurance)	<input type="radio"/>	<input type="radio"/>	<input type="radio"/>	<input type="radio"/>	<input type="radio"/>
Impact of COVID 19	<input type="radio"/>	<input type="radio"/>	<input type="radio"/>	<input type="radio"/>	<input type="radio"/>
Legislation (e.g., elections, policy changes, health care system reform)	<input type="radio"/>	<input type="radio"/>	<input type="radio"/>	<input type="radio"/>	<input type="radio"/>
Neighborhood and built environment (e.g., limited access to parks, poor neighborhood walkability, poor air quality, unsafe drinking water)	<input type="radio"/>	<input type="radio"/>	<input type="radio"/>	<input type="radio"/>	<input type="radio"/>
Resources (e.g., lack of funding, inadequate technology, shortage of health care professionals)	<input type="radio"/>	<input type="radio"/>	<input type="radio"/>	<input type="radio"/>	<input type="radio"/>
Social environment (e.g., exposure to community violence, discrimination, lack of social support)	<input type="radio"/>	<input type="radio"/>	<input type="radio"/>	<input type="radio"/>	<input type="radio"/>
Other:					

Community Health Assessment - Regional Update 2022

Please identify what Actions (based on these five themes) that are needed to overcome the challenges identified as most important. These challenges are the five themes of “PH 3.0: A Call to Action to Create a 21st Century Public Health Infrastructure,” published by the U.S. Department of Health and Human Services, to help frame the “Types of Actions” needed to address the challenges facing our communities.

Definition of each Type of Action:

- **Strong Leadership and Workforce:** Build cohesive leadership, align efforts across all sectors to drive health initiatives through, and develop a competent workforce that can support the healthcare challenges in the future.
- **Strategic Partnerships:** Develop structured, cross-sector partnerships to work together on common goals.
- **Flexible and Sustainable Funding:** Explore and leverage available funding from multiple sources.
- **Data, Metrics, and Analytics:** Make data accessible to communities to drive decisions and monitor outcomes.
- **Excellence in Service Delivery:** Support continuous quality improvement to evaluate processes and provide exceptional services to the community, all achieved through a strong foundational infrastructure.

Community Health Assessment - Regional Update 2022

This question involves two steps:

Step 1: Please mark in the left-hand column to indicate if a challenge is a Priority Issue affecting the health and well-being of your community.

Step 2: ONLY for those challenges that you've identified as a Priority Issue, please mark to indicate which of the 5 actions in the columns to the right are most needed to make a change in your community.

* 5. What Challenges Exist and Which of the 5 Actions are Needed

	Priority Issue	Strong Leadership and Workforce	Strategic Partnerships	Flexible and Sustainable Funding and Resources	Data, Metrics, and Analysis	Excellence in Service Delivery
Aging concerns (e.g., falls, arthritis)	<input type="checkbox"/>	<input type="checkbox"/>	<input type="checkbox"/>	<input type="checkbox"/>	<input type="checkbox"/>	<input type="checkbox"/>
Aging - independent living (e.g., long-term care, living facility, housing, transportation)	<input type="checkbox"/>	<input type="checkbox"/>	<input type="checkbox"/>	<input type="checkbox"/>	<input type="checkbox"/>	<input type="checkbox"/>
Alzheimer's disease and related dementias	<input type="checkbox"/>	<input type="checkbox"/>	<input type="checkbox"/>	<input type="checkbox"/>	<input type="checkbox"/>	<input type="checkbox"/>
Alcohol use disorder	<input type="checkbox"/>	<input type="checkbox"/>	<input type="checkbox"/>	<input type="checkbox"/>	<input type="checkbox"/>	<input type="checkbox"/>
Opioid use disorder	<input type="checkbox"/>	<input type="checkbox"/>	<input type="checkbox"/>	<input type="checkbox"/>	<input type="checkbox"/>	<input type="checkbox"/>
Other drug use disorder	<input type="checkbox"/>	<input type="checkbox"/>	<input type="checkbox"/>	<input type="checkbox"/>	<input type="checkbox"/>	<input type="checkbox"/>
Chronic disease (e.g., asthma, cancer, diabetes, heart disease, hypertension, stroke)	<input type="checkbox"/>	<input type="checkbox"/>	<input type="checkbox"/>	<input type="checkbox"/>	<input type="checkbox"/>	<input type="checkbox"/>
Lack of civic engagement (e.g., community involvement, volunteering, voting)	<input type="checkbox"/>	<input type="checkbox"/>	<input type="checkbox"/>	<input type="checkbox"/>	<input type="checkbox"/>	<input type="checkbox"/>
Crime	<input type="checkbox"/>	<input type="checkbox"/>	<input type="checkbox"/>	<input type="checkbox"/>	<input type="checkbox"/>	<input type="checkbox"/>

		Strong Leadership and Workforce	Strategic Partnerships	Flexible and Sustainable Funding and Resources	Data, Metrics, and Analysis	Excellence in Service Delivery
Education (e.g., absenteeism, graduation rates)	<input type="checkbox"/>	<input type="checkbox"/>	<input type="checkbox"/>	<input type="checkbox"/>	<input type="checkbox"/>	<input type="checkbox"/>
Food insecurity	<input type="checkbox"/>	<input type="checkbox"/>	<input type="checkbox"/>	<input type="checkbox"/>	<input type="checkbox"/>	<input type="checkbox"/>
Homelessness	<input type="checkbox"/>	<input type="checkbox"/>	<input type="checkbox"/>	<input type="checkbox"/>	<input type="checkbox"/>	<input type="checkbox"/>
Housing insecurity	<input type="checkbox"/>	<input type="checkbox"/>	<input type="checkbox"/>	<input type="checkbox"/>	<input type="checkbox"/>	<input type="checkbox"/>
Infant mortality	<input type="checkbox"/>	<input type="checkbox"/>	<input type="checkbox"/>	<input type="checkbox"/>	<input type="checkbox"/>	<input type="checkbox"/>
Hepatitis C	<input type="checkbox"/>	<input type="checkbox"/>	<input type="checkbox"/>	<input type="checkbox"/>	<input type="checkbox"/>	<input type="checkbox"/>
Tuberculosis	<input type="checkbox"/>	<input type="checkbox"/>	<input type="checkbox"/>	<input type="checkbox"/>	<input type="checkbox"/>	<input type="checkbox"/>
Intentional injury	<input type="checkbox"/>	<input type="checkbox"/>	<input type="checkbox"/>	<input type="checkbox"/>	<input type="checkbox"/>	<input type="checkbox"/>
Mental health issues	<input type="checkbox"/>	<input type="checkbox"/>	<input type="checkbox"/>	<input type="checkbox"/>	<input type="checkbox"/>	<input type="checkbox"/>
Obesity	<input type="checkbox"/>	<input type="checkbox"/>	<input type="checkbox"/>	<input type="checkbox"/>	<input type="checkbox"/>	<input type="checkbox"/>
Physical infrastrucure (e.g., roads, sidewalks, parks, walkability)	<input type="checkbox"/>	<input type="checkbox"/>	<input type="checkbox"/>	<input type="checkbox"/>	<input type="checkbox"/>	<input type="checkbox"/>
Lack of public transportation	<input type="checkbox"/>	<input type="checkbox"/>	<input type="checkbox"/>	<input type="checkbox"/>	<input type="checkbox"/>	<input type="checkbox"/>
Sexually transmitted disease	<input type="checkbox"/>	<input type="checkbox"/>	<input type="checkbox"/>	<input type="checkbox"/>	<input type="checkbox"/>	<input type="checkbox"/>
Socio-economic status (e.g., poverty, income inequality)	<input type="checkbox"/>	<input type="checkbox"/>	<input type="checkbox"/>	<input type="checkbox"/>	<input type="checkbox"/>	<input type="checkbox"/>
Suicide	<input type="checkbox"/>	<input type="checkbox"/>	<input type="checkbox"/>	<input type="checkbox"/>	<input type="checkbox"/>	<input type="checkbox"/>
Teenage pregnancy	<input type="checkbox"/>	<input type="checkbox"/>	<input type="checkbox"/>	<input type="checkbox"/>	<input type="checkbox"/>	<input type="checkbox"/>
Underemployment	<input type="checkbox"/>	<input type="checkbox"/>	<input type="checkbox"/>	<input type="checkbox"/>	<input type="checkbox"/>	<input type="checkbox"/>
Unemployment	<input type="checkbox"/>	<input type="checkbox"/>	<input type="checkbox"/>	<input type="checkbox"/>	<input type="checkbox"/>	<input type="checkbox"/>
Unintentional injury	<input type="checkbox"/>	<input type="checkbox"/>	<input type="checkbox"/>	<input type="checkbox"/>	<input type="checkbox"/>	<input type="checkbox"/>
COVID-19 related issues	<input type="checkbox"/>	<input type="checkbox"/>	<input type="checkbox"/>	<input type="checkbox"/>	<input type="checkbox"/>	<input type="checkbox"/>

Other:

6. Do you have optional comments for the existing challenges listed above? Please list below.

--

Community Health Assessment - Regional Update 2022

Thank You!

Thank you for sharing your input regarding the needs of residents in your community to "live well". If you have any questions or concerns, please contact Jackie Werth (Jackie.Werth@sdcounty.ca.gov) or Martha Guzman (Martha.Guzman@sdcounty.ca.gov).