



MAP ATLAS

Diabetes San Diego County, 2019



County of San Diego | Health and Human Services Agency
Public Health Services | Community Health Statistics Unit

Prepared January 2022

Data Sources - San Diego County, 2019

Death* is based on underlying cause of death among San Diego County residents. Rates calculated per 100,000 residents. Rates not calculated for < 5 cases. Maps not produced for conditions/outcomes with no SRA-level rates. Some sections may have no maps.

Sources: Death data from Vital Records Business Intelligence System (VRBIS), 2019.

Population estimates from San Diego Association of Governments (SANDAG), 2019 v5/2020.

*For substance/drug overdoses, death rate is based on the multiple/contributing cause of death among San Diego County residents.

Hospitalization refers to treatment at a general acute care facility in San Diego County. Rates calculated per 100,000 residents. Rates not calculated for < 5 cases. Maps not produced for conditions/outcomes with no SRA-level rates. Some sections may have no maps.

Sources: California Office of Statewide Health Planning and Development (OSHPD), 2019 Patient Discharge Database.

Population estimates from San Diego Association of Governments (SANDAG), 2019 v5/2020.

Emergency Department (ED) Discharge refers to treatment at an ED facility in San Diego County.

Rates calculated per 100,000 residents. Rates not calculated for < 5 cases. Maps not produced for conditions/outcomes with no SRA-level rates. Some sections may have no maps.

Sources: California Office of Statewide Health Planning and Development (OSHPD), 2019 Emergency Department Discharge database.

Population estimates from San Diego Association of Governments (SANDAG), 2019 v5/2020.

In-Patient Treatment (IPT) refers to treatment at a psychiatric care or chemical rehabilitation facility in San Diego County. Rates calculated per 100,000 residents. Rates not calculated for < 5 cases. Maps not produced for conditions/outcomes with no SRA-level rates. Some sections may have no maps.

Sources: California Office of Statewide Health Planning and Development (OSHPD), 2019 Patient Discharge Database.

Population estimates from San Diego Association of Governments (SANDAG), 2019 v5/2020.

Maps & Analysis by County of San Diego, Health and Human Services Agency, Public Health Services, Community Health Statistics Unit. Contact 619.692.6672. January 2022.

https://www.sandiegocounty.gov/hhsa/programs/phs/community_health_statistics/
LiveWellSD.org.

Contact Information:

Community Health Statistics Unit

3851 Rosecrans Street

San Diego, CA 92110

619.692.6667

Isabel.Corcoc@sdcounty.ca.gov

(Epidemiologist II for CHSU)

Niki.Quach1@sdcounty.ca.gov

(Epidemiology Analyst Intern for CHSU)

Christopher.OMalley@sdcounty.ca.gov

(Senior Epidemiologist for CHSU)

For more detailed explanation of geography, methods, and sources, see online Community Profile at

<http://www.SdHealthStatistics.com/>

Contents

Section 1: Deaths	4
Section 2: Hospitalizations.....	12
Section 3: Emergency Department (ED) Discharges.....	23
Section 4: In-Patient Treatments (IPT).....	34

Section 1

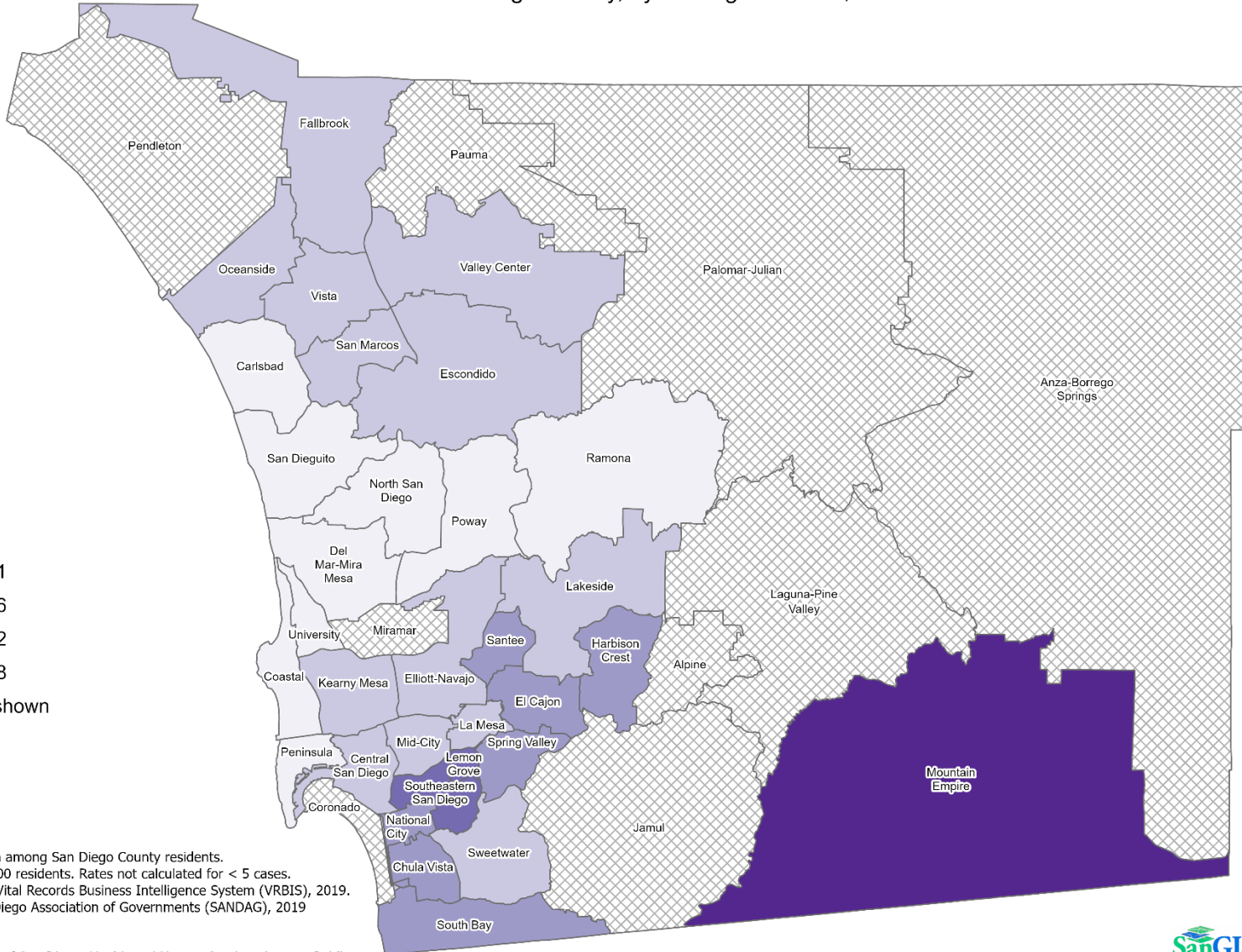
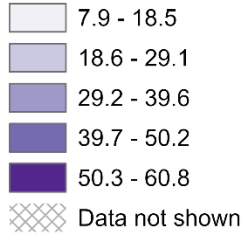
Death Rates Among San Diego County Residents by Demographics, 2019:

- Total Rate
- Race/Ethnicity
 - Asian/Pacific Islander (API)
 - Black
 - Hispanic
 - White
- Age
 - 0-14
 - 15-24
 - 25-44
 - 45-64
 - 65+

Total Death Rates* San Diego County, by Subregional Area, 2019

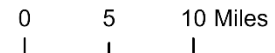


Diabetes



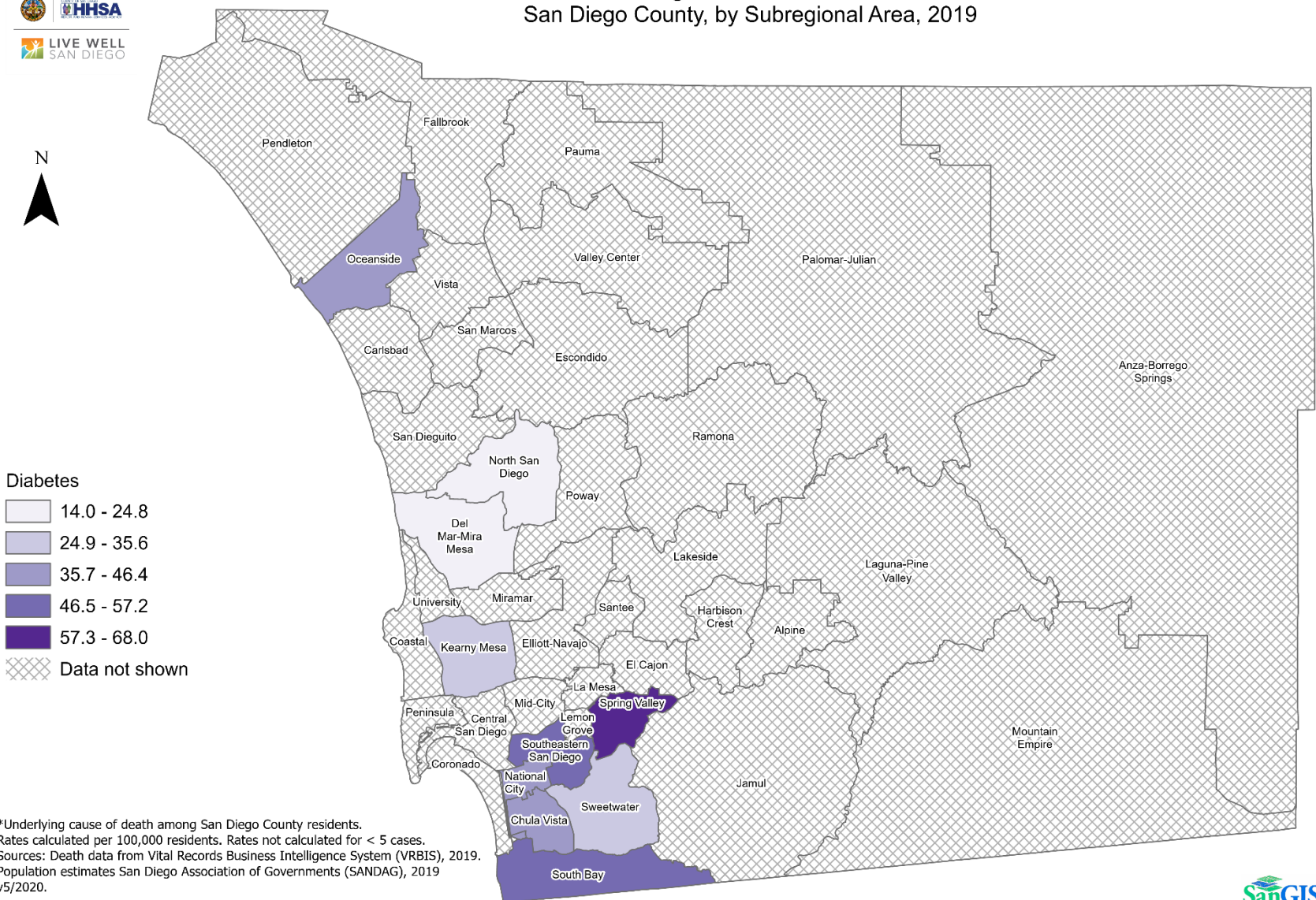
*Underlying cause of death among San Diego County residents. Rates calculated per 100,000 residents. Rates not calculated for < 5 cases. Sources: Death data from Vital Records Business Intelligence System (VRBIS), 2019. Population estimates San Diego Association of Governments (SANDAG), 2019 v5/2020.

Maps & Analysis by County of San Diego, Health and Human Services Agency, Public Health Services, Community Health Statistics Unit. Contact 619.692.6672. https://www.sandiegocounty.gov/hhsa/programs/phs/community_health_statistics/. December, 2021. LiveWellSD.org.





Death Rates Among Asian/Pacific Islander Residents* San Diego County, by Subregional Area, 2019

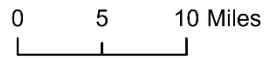


Diabetes

- 14.0 - 24.8
- 24.9 - 35.6
- 35.7 - 46.4
- 46.5 - 57.2
- 57.3 - 68.0
- Data not shown

*Underlying cause of death among San Diego County residents. Rates calculated per 100,000 residents. Rates not calculated for < 5 cases. Sources: Death data from Vital Records Business Intelligence System (VRBIS), 2019. Population estimates San Diego Association of Governments (SANDAG), 2019 v5/2020.

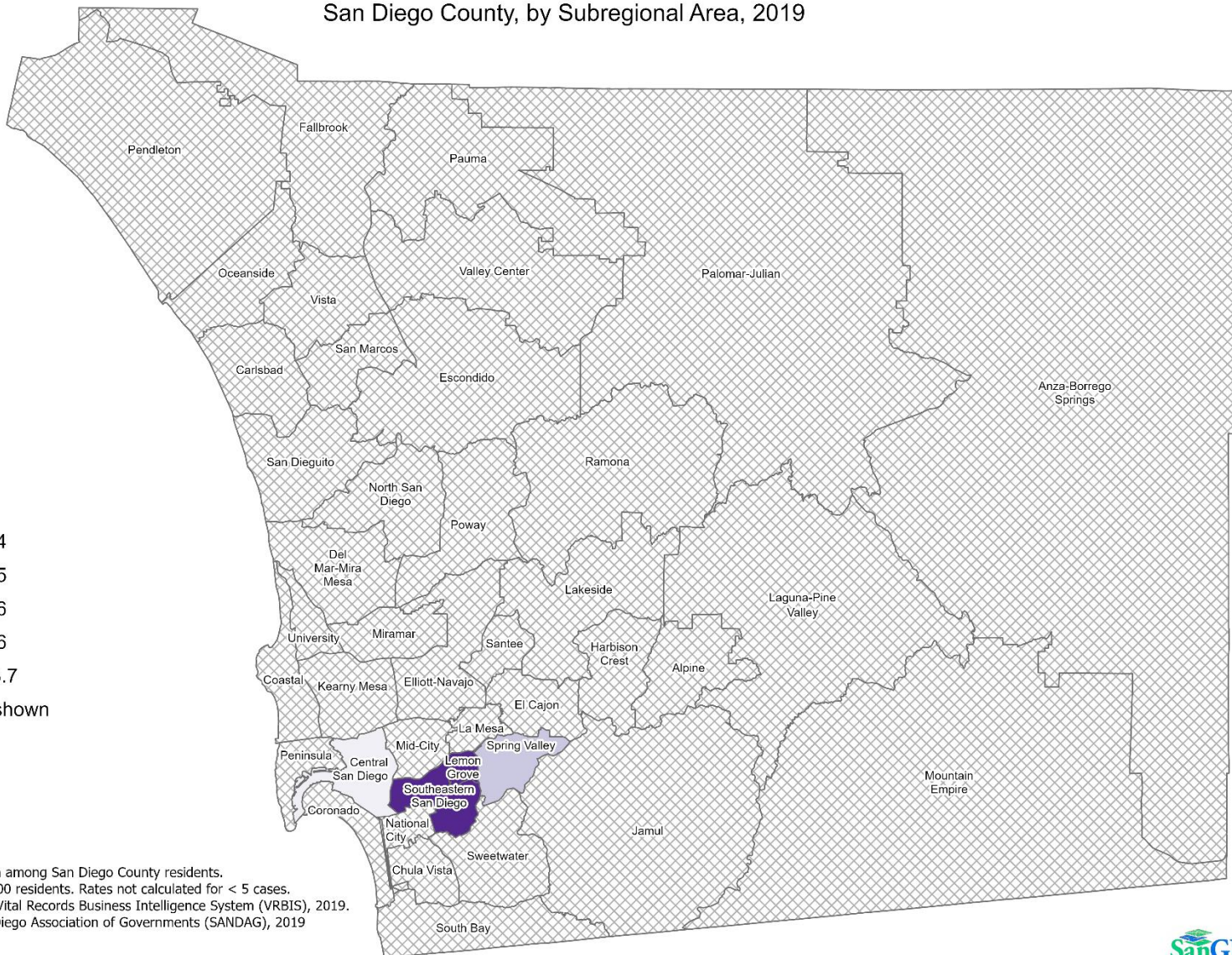
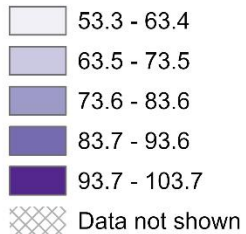
Maps & Analysis by County of San Diego, Health and Human Services Agency, Public Health Services, Community Health Statistics Unit. Contact 619.692.6672. https://www.sandiegocounty.gov/hhsa/programs/phs/community_health_statistics/. December, 2021. LiveWellSD.org.



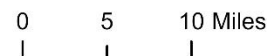
Death Rates Among Black Residents* San Diego County, by Subregional Area, 2019



Diabetes

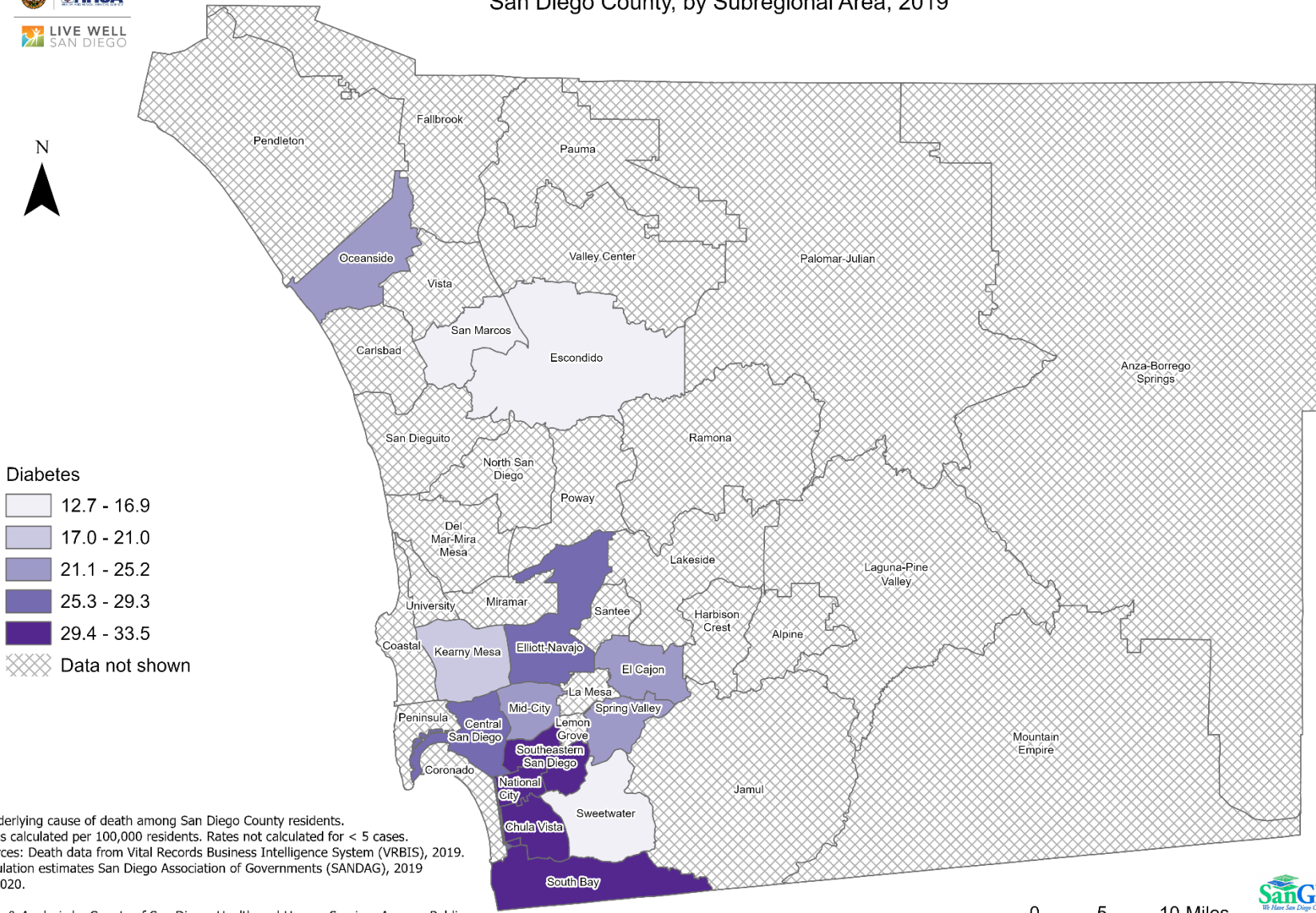


*Underlying cause of death among San Diego County residents.
Rates calculated per 100,000 residents. Rates not calculated for < 5 cases.
Sources: Death data from Vital Records Business Intelligence System (VRBIS), 2019.
Population estimates San Diego Association of Governments (SANDAG), 2019 v5/2020.



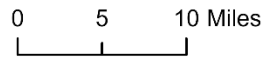


Death Rates Among Hispanic Residents* San Diego County, by Subregional Area, 2019

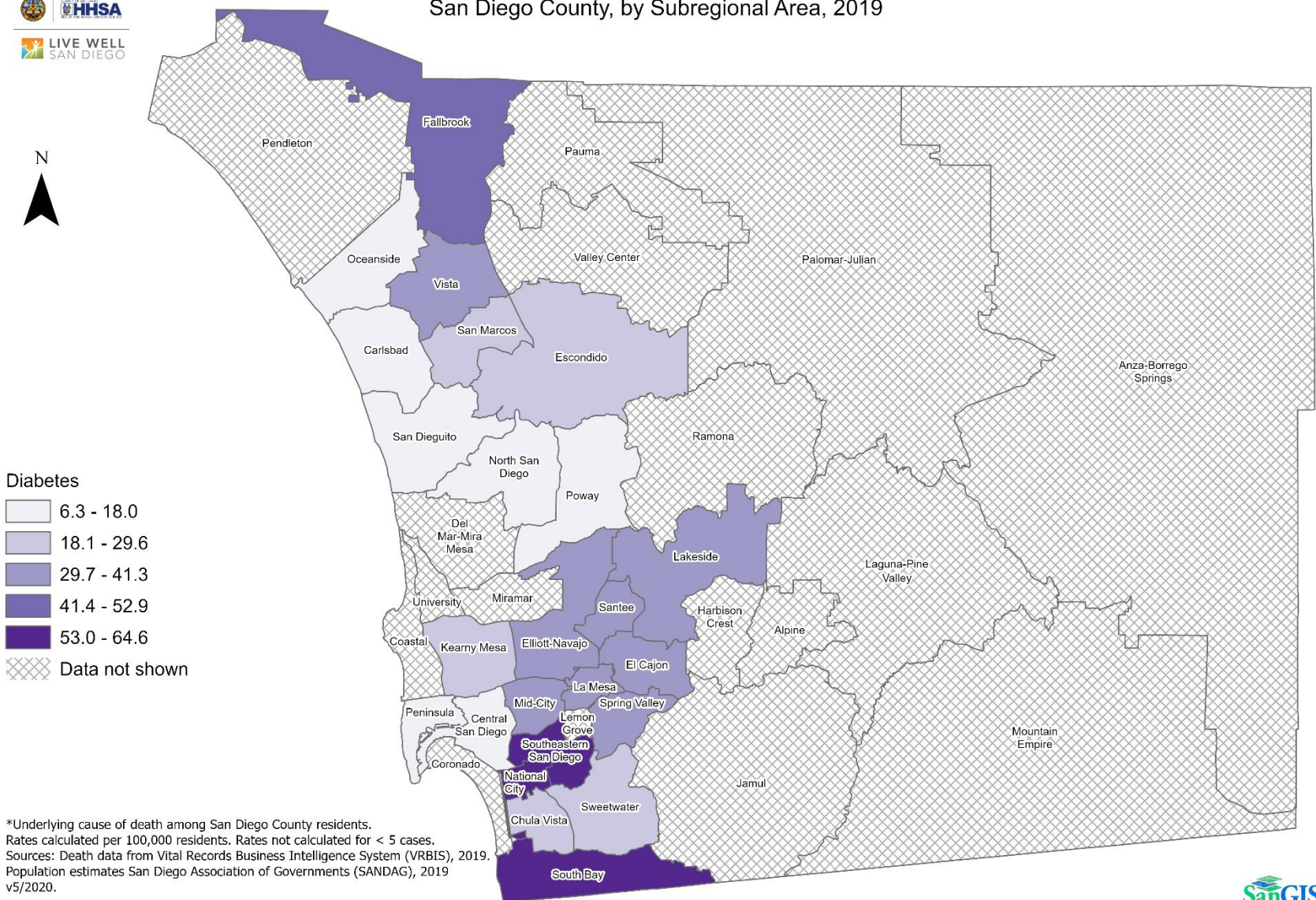


*Underlying cause of death among San Diego County residents. Rates calculated per 100,000 residents. Rates not calculated for < 5 cases. Sources: Death data from Vital Records Business Intelligence System (VRBIS), 2019. Population estimates San Diego Association of Governments (SANDAG), 2019 v5/2020.

Maps & Analysis by County of San Diego, Health and Human Services Agency, Public Health Services, Community Health Statistics Unit. Contact 619.692.6672. https://www.sandiegocounty.gov/hhsa/programs/phs/community_health_statistics/. December, 2021. LiveWellSD.org.

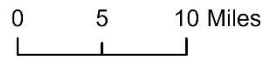


Death Rates Among White Residents* San Diego County, by Subregional Area, 2019



Diabetes
 6.3 - 18.0
 18.1 - 29.6
 29.7 - 41.3
 41.4 - 52.9
 53.0 - 64.6
 Data not shown

*Underlying cause of death among San Diego County residents.
 Rates calculated per 100,000 residents. Rates not calculated for < 5 cases.
 Sources: Death data from Vital Records Business Intelligence System (VRBIS), 2019.
 Population estimates San Diego Association of Governments (SANDAG), 2019 v5/2020.

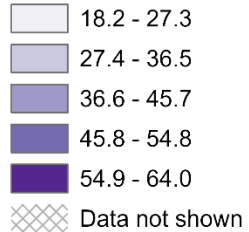




Death Rates Among Residents, Ages 45-64* San Diego County, by Subregional Area, 2019

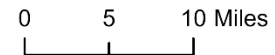
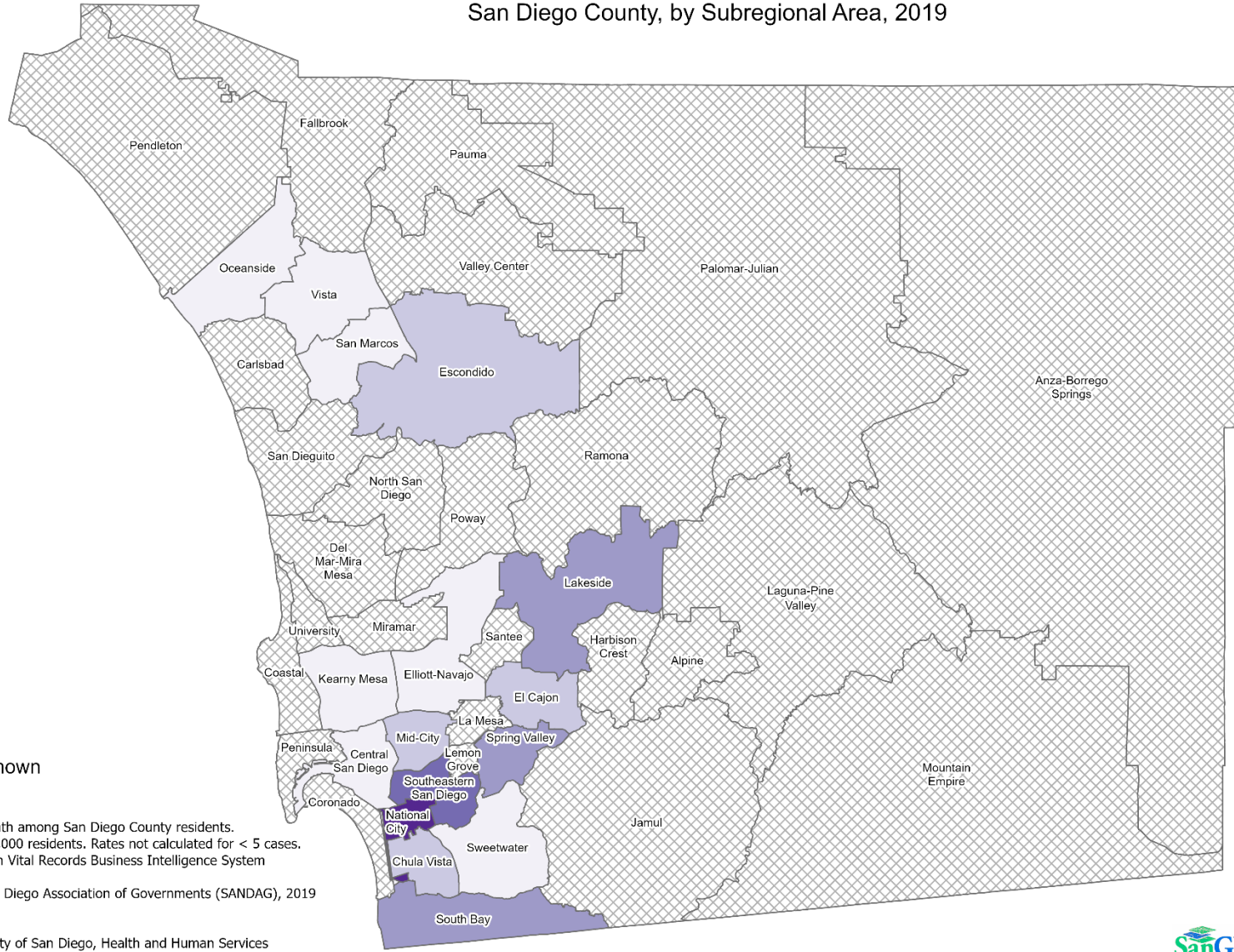


Diabetes



*Underlying cause of death among San Diego County residents.
Rates calculated per 100,000 residents. Rates not calculated for < 5 cases.
Sources: Death data from Vital Records Business Intelligence System (VRBIS), 2019.
Population estimates San Diego Association of Governments (SANDAG), 2019 v5/2020.

Maps & Analysis by County of San Diego, Health and Human Services Agency, Public Health Services, Community Health Statistics Unit. Contact 619.692.6672. https://www.sandiegocounty.gov/hhsa/programs/phs/community_health_statistics/. December, 2021. LiveWellSD.org.





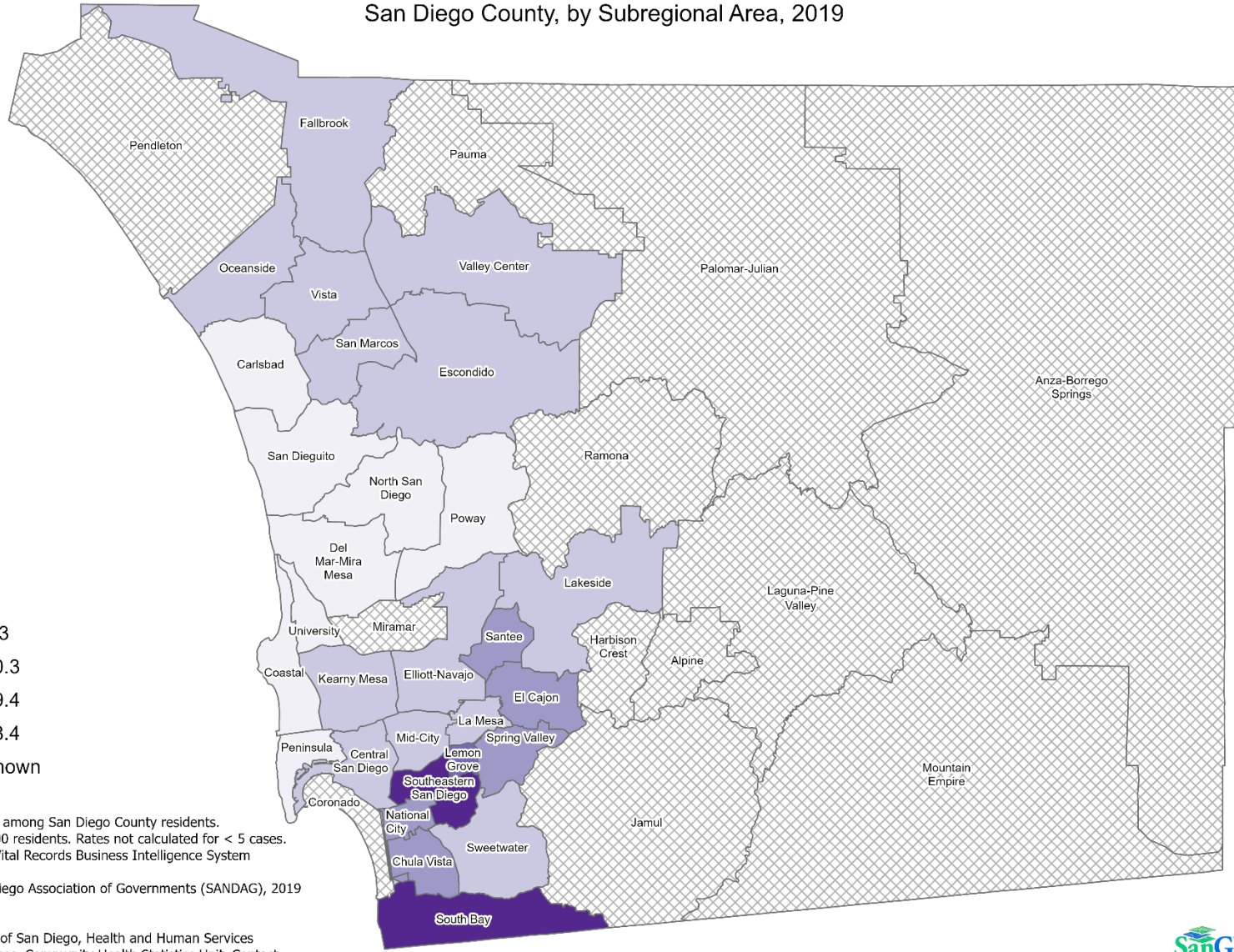
LIVE WELL SAN DIEGO

Death Rates Among Residents, Ages 65+* San Diego County, by Subregional Area, 2019



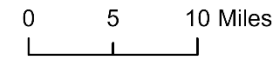
Diabetes

- 43.2 - 92.2
- 92.3 - 141.3
- 141.4 - 190.3
- 190.4 - 239.4
- 239.5 - 288.4
- Data not shown



*Underlying cause of death among San Diego County residents.
 Rates calculated per 100,000 residents. Rates not calculated for < 5 cases.
 Sources: Death data from Vital Records Business Intelligence System (VRBIS), 2019.
 Population estimates San Diego Association of Governments (SANDAG), 2019 v5/2020.

Maps & Analysis by County of San Diego, Health and Human Services Agency, Public Health Services, Community Health Statistics Unit. Contact 619.692.6672. https://www.sandiegocounty.gov/hhsa/programs/phs/community_health_statistics/. December, 2021. LiveWellSD.org.



Section 2

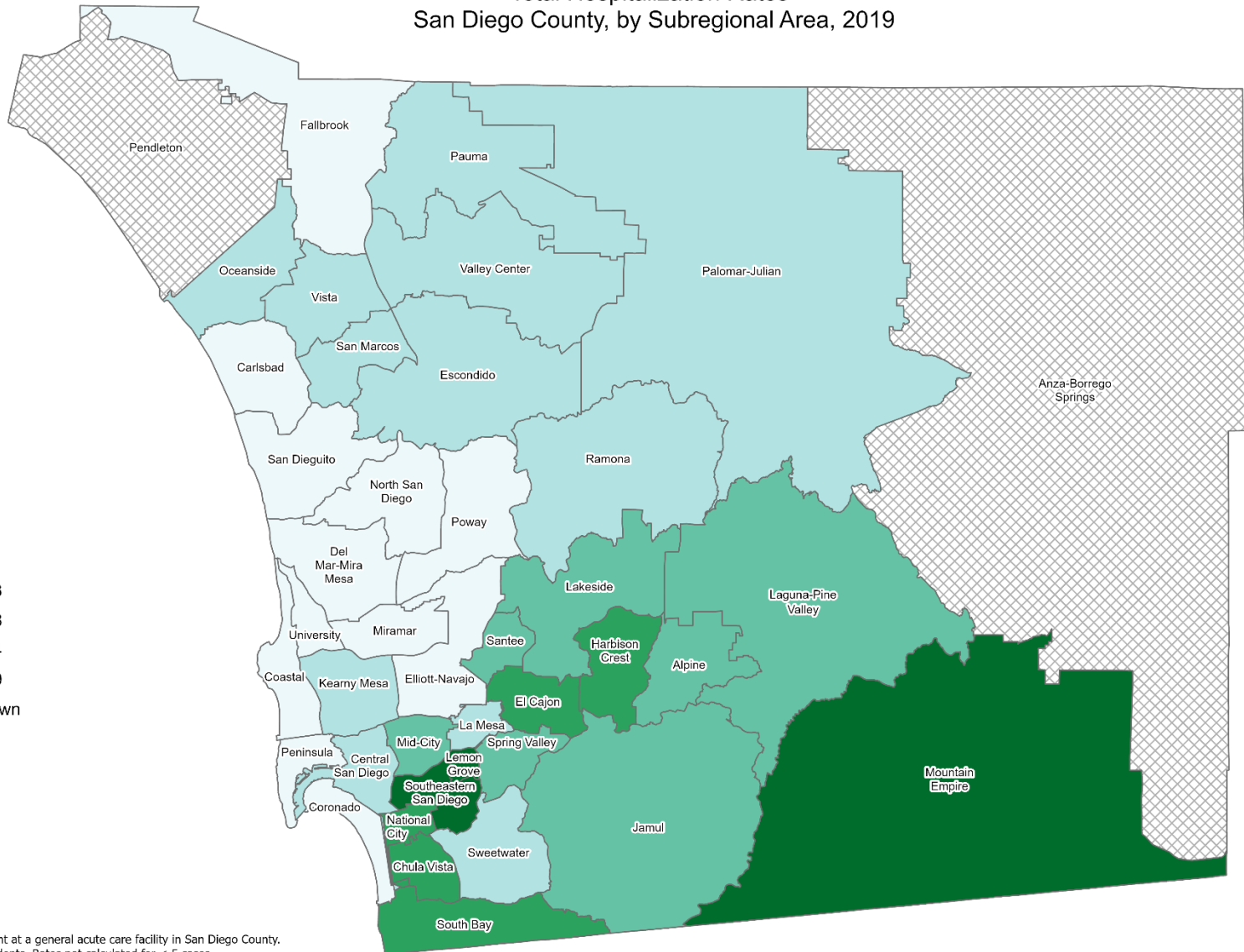
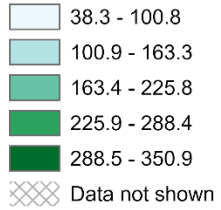
Hospitalization Rates Among San Diego County Residents by Demographics, 2019:

- Total Rate
- Race/Ethnicity
 - Asian/Pacific Islander (API)
 - Black
 - Hispanic
 - White
- Age
 - 0-14
 - 15-24
 - 25-44
 - 45-64
 - 65+

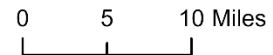
Total Hospitalization Rates* San Diego County, by Subregional Area, 2019



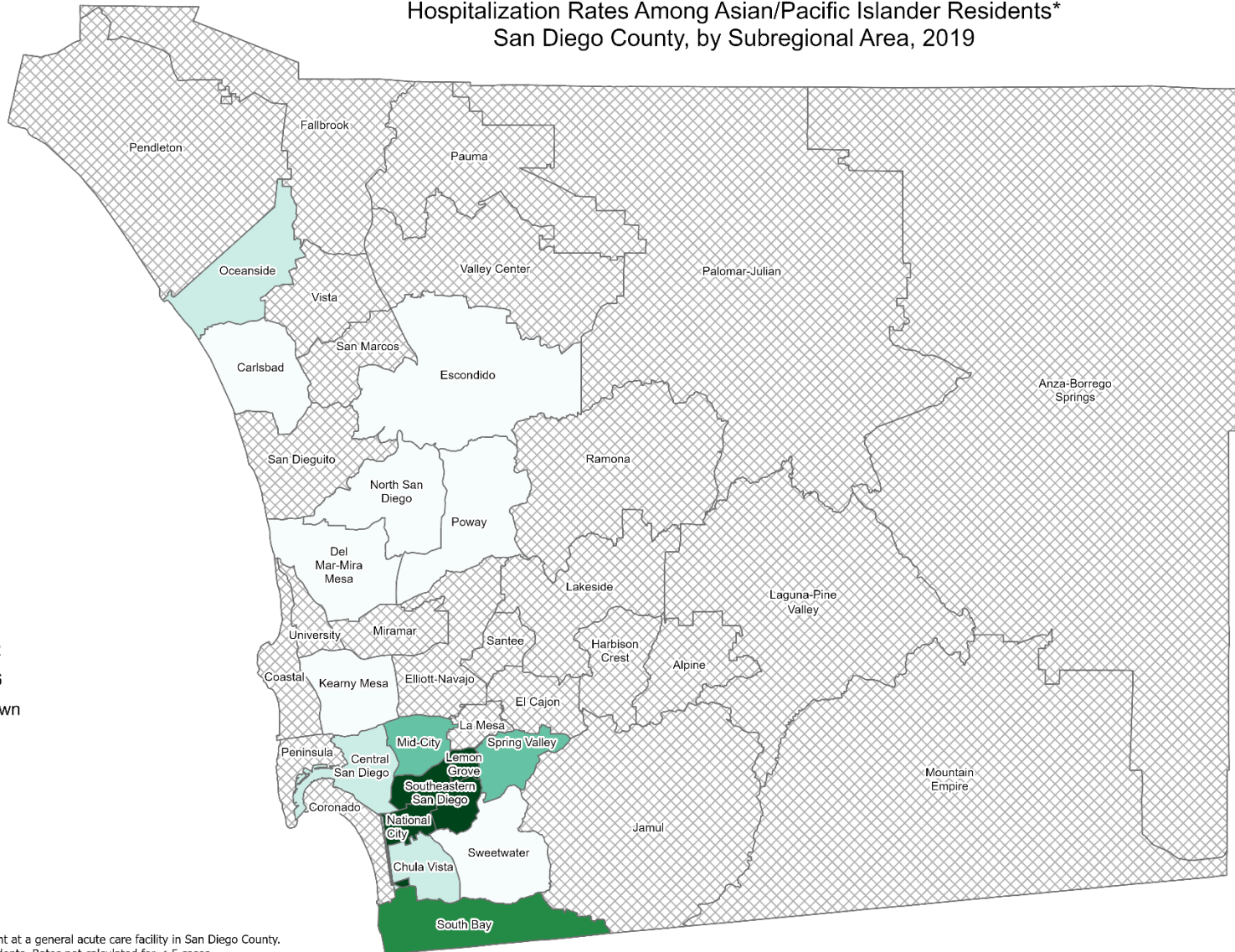
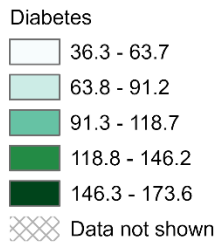
Diabetes



*Hospitalization refers to treatment at a general acute care facility in San Diego County. Rates calculated per 100,000 residents. Rates not calculated for < 5 cases.
Sources: California Office of Statewide Health Planning and Development (OSHPD), 2019 Patient Discharge Database.
Population estimates San Diego Association of Governments (SANDAG), 2019 v5/2020.



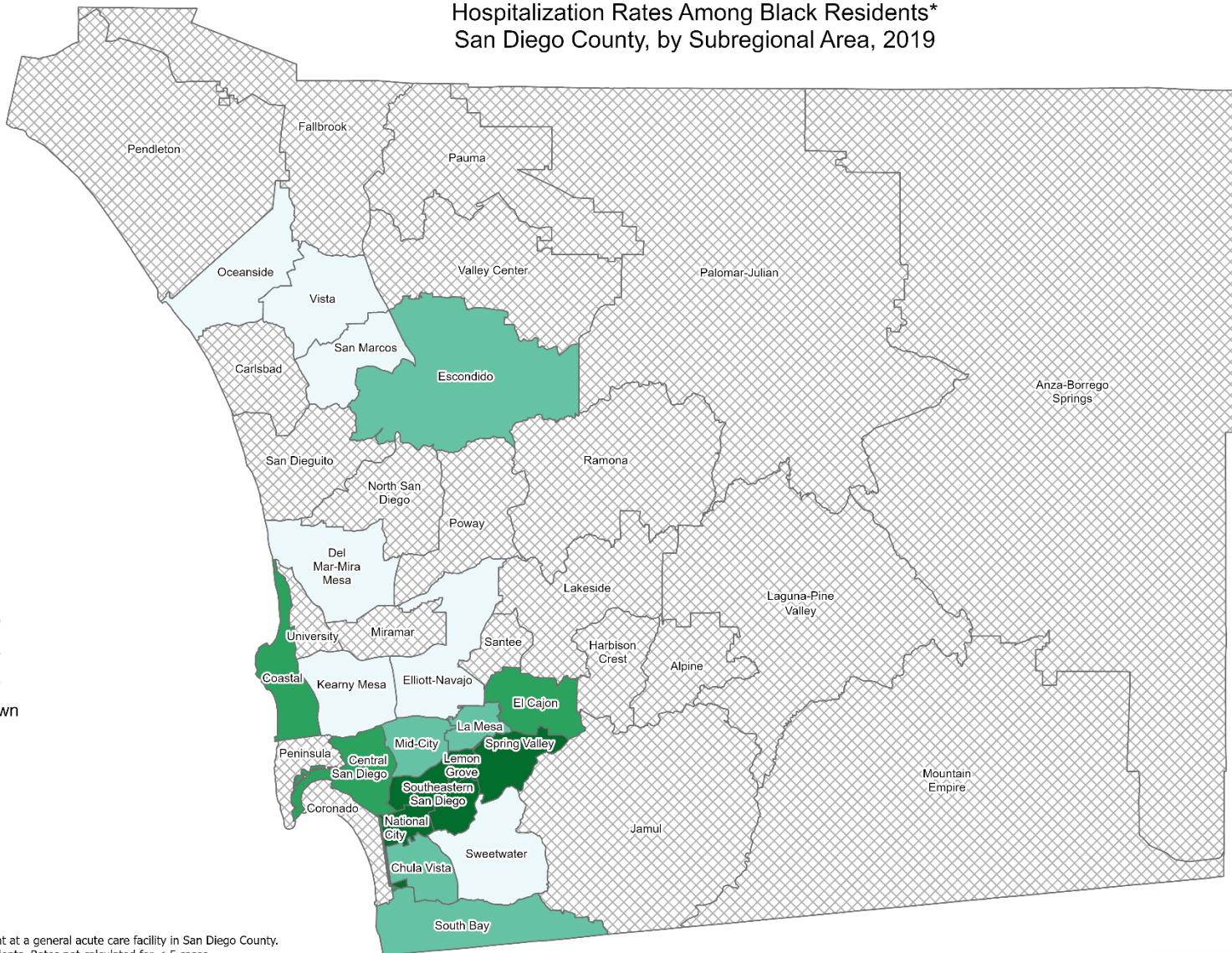
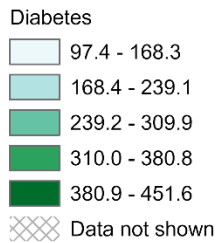
Hospitalization Rates Among Asian/Pacific Islander Residents* San Diego County, by Subregional Area, 2019



*Hospitalization refers to treatment at a general acute care facility in San Diego County. Rates calculated per 100,000 residents. Rates not calculated for < 5 cases.
Sources: California Office of Statewide Health Planning and Development (OSHPD), 2019 Patient Discharge Database.
Population estimates San Diego Association of Governments (SANDAG), 2019 v5/2020.



Hospitalization Rates Among Black Residents* San Diego County, by Subregional Area, 2019



*Hospitalization refers to treatment at a general acute care facility in San Diego County. Rates calculated per 100,000 residents. Rates not calculated for < 5 cases.
Sources: California Office of Statewide Health Planning and Development (OSHPD), 2019 Patient Discharge Database.
Population estimates San Diego Association of Governments (SANDAG), 2019 v5/2020.

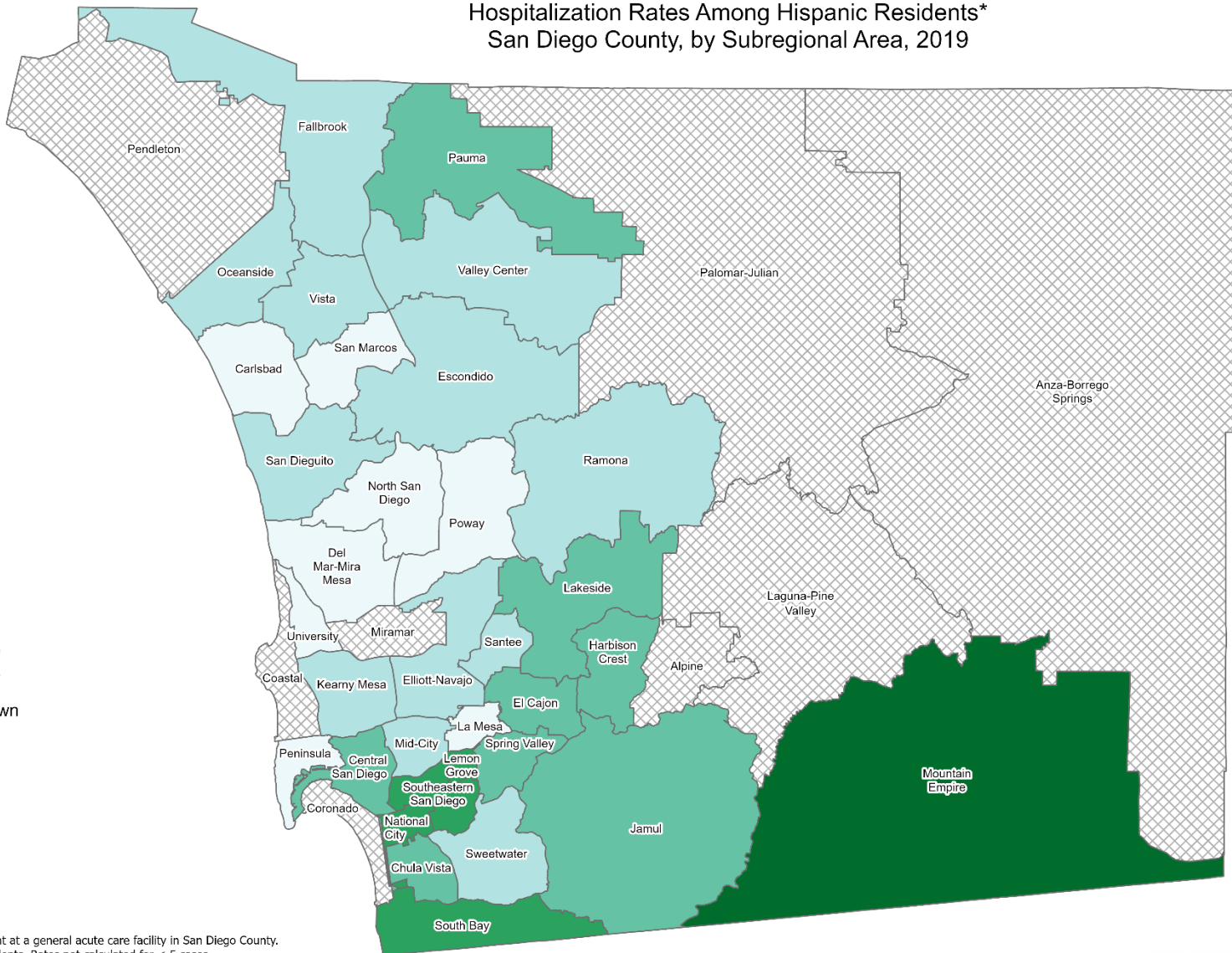
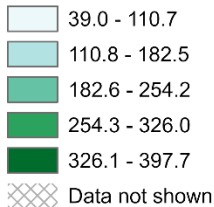




Hospitalization Rates Among Hispanic Residents* San Diego County, by Subregional Area, 2019

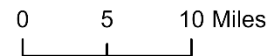


Diabetes



*Hospitalization refers to treatment at a general acute care facility in San Diego County. Rates calculated per 100,000 residents. Rates not calculated for < 5 cases.
Sources: California Office of Statewide Health Planning and Development (OSHPD), 2019 Patient Discharge Database.
Population estimates San Diego Association of Governments (SANDAG), 2019 v5/2020.

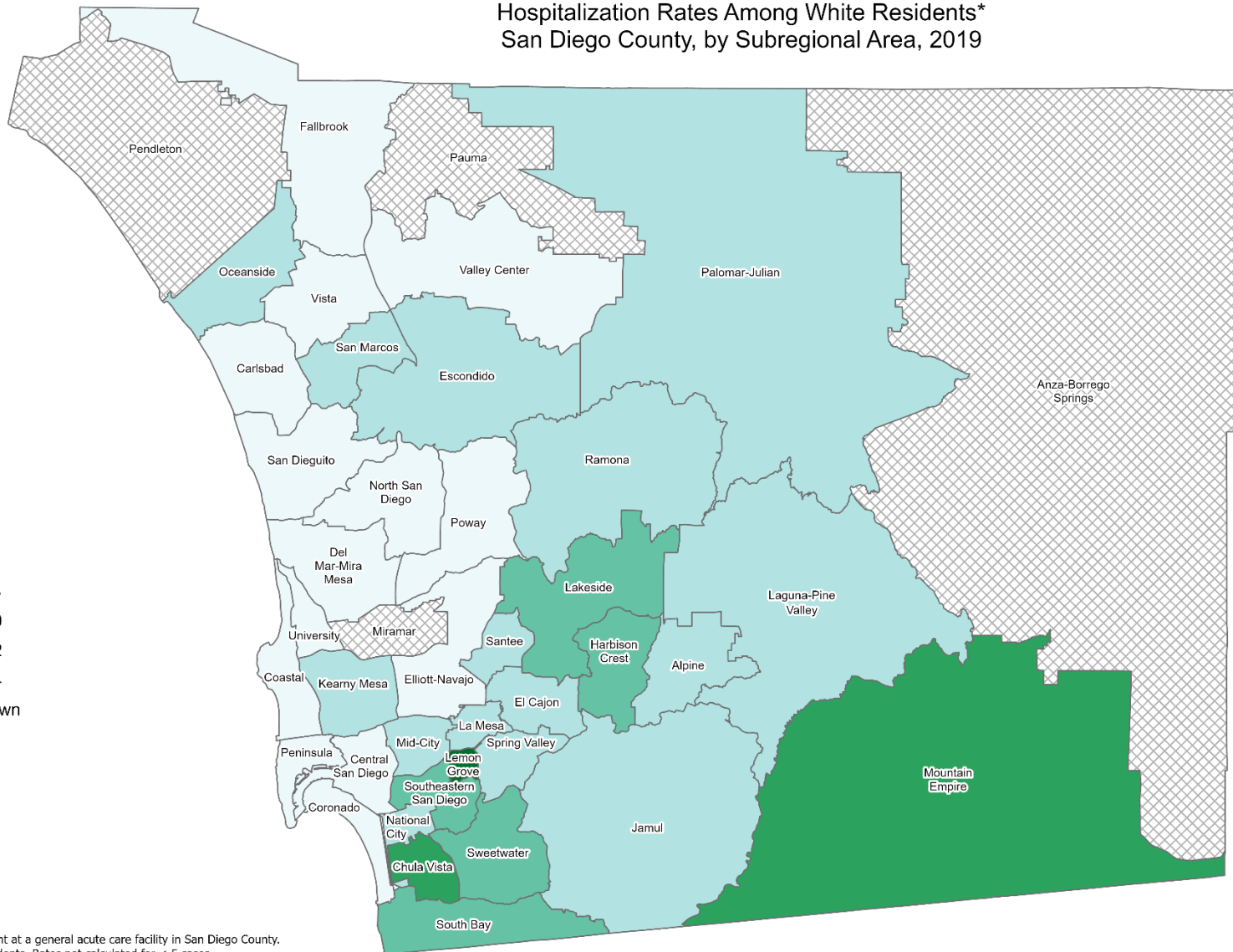
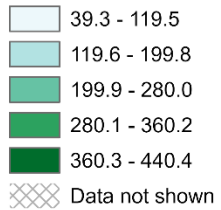
Maps & Analysis by County of San Diego, Health and Human Services Agency, Public Health Services, Community Health Statistics Unit. Contact 619.692.6672. https://www.sandiegocounty.gov/hhsa/programs/phs/community_health_statistics/. December 2021.
LiveWellSD.org.



Hospitalization Rates Among White Residents* San Diego County, by Subregional Area, 2019



Diabetes

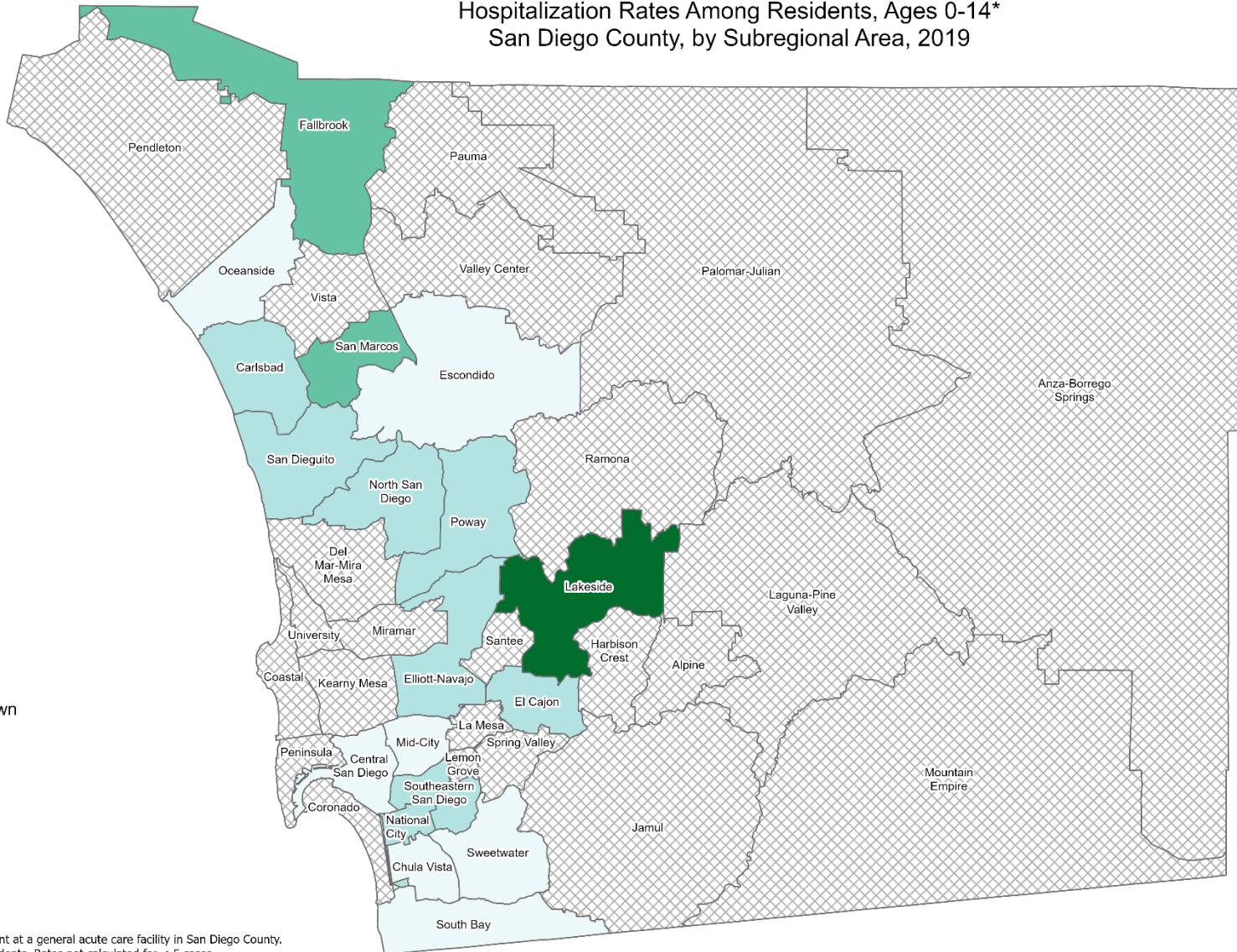
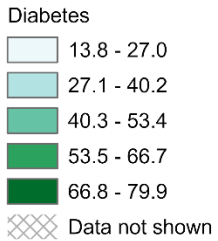


*Hospitalization refers to treatment at a general acute care facility in San Diego County. Rates calculated per 100,000 residents. Rates not calculated for < 5 cases.
Sources: California Office of Statewide Health Planning and Development (OSHPD), 2019 Patient Discharge Database.
Population estimates San Diego Association of Governments (SANDAG), 2019 v5/2020.



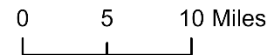


Hospitalization Rates Among Residents, Ages 0-14* San Diego County, by Subregional Area, 2019

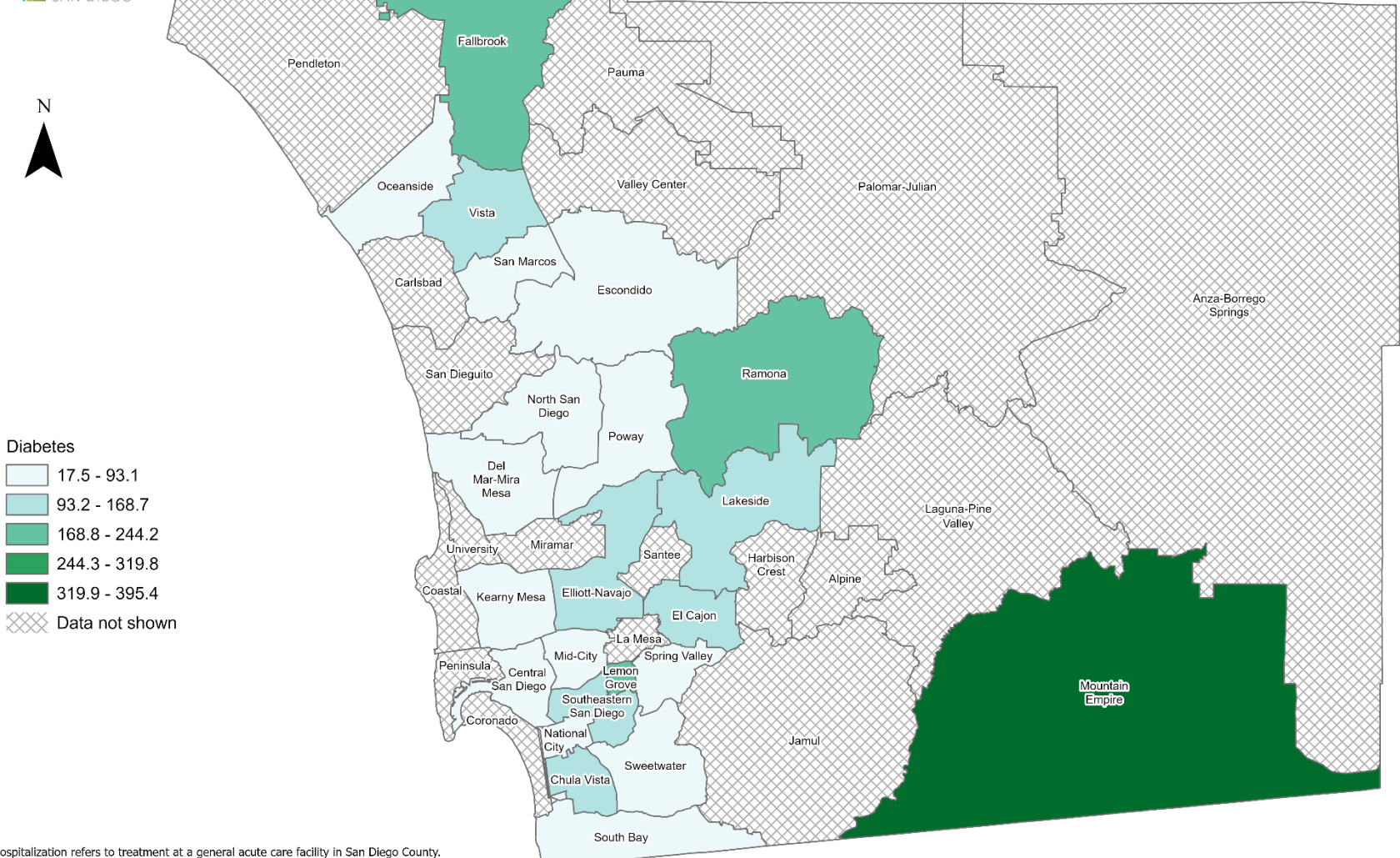


*Hospitalization refers to treatment at a general acute care facility in San Diego County. Rates calculated per 100,000 residents. Rates not calculated for < 5 cases.
Sources: California Office of Statewide Health Planning and Development (OSHPD), 2019 Patient Discharge Database.
Population estimates San Diego Association of Governments (SANDAG), 2019 v5/2020.

Maps & Analysis by County of San Diego, Health and Human Services Agency, Public Health Services, Community Health Statistics Unit. Contact 619.692.6672. https://www.sandiegocounty.gov/hhsa/programs/phs/community_health_statistics/. December 2021.
LiveWellSD.org.



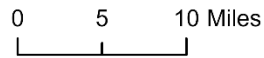
Hospitalization Rates Among Residents, Ages 15-24* San Diego County, by Subregional Area, 2019



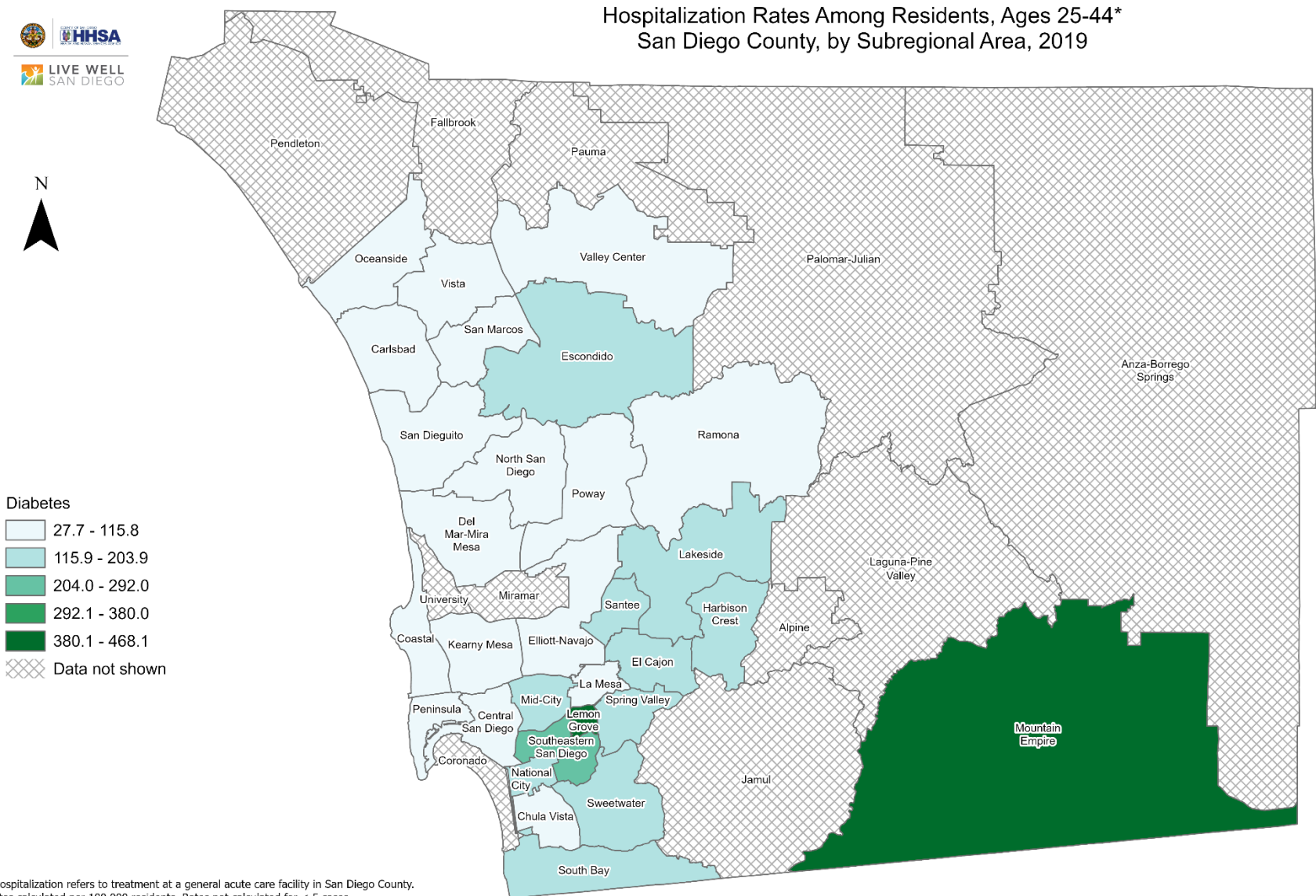
Diabetes

- 17.5 - 93.1
- 93.2 - 168.7
- 168.8 - 244.2
- 244.3 - 319.8
- 319.9 - 395.4
- Data not shown

*Hospitalization refers to treatment at a general acute care facility in San Diego County. Rates calculated per 100,000 residents. Rates not calculated for < 5 cases.
Sources: California Office of Statewide Health Planning and Development (OSHPD), 2019 Patient Discharge Database.
Population estimates San Diego Association of Governments (SANDAG), 2019 v5/2020.

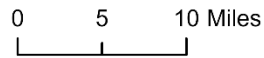


Hospitalization Rates Among Residents, Ages 25-44* San Diego County, by Subregional Area, 2019

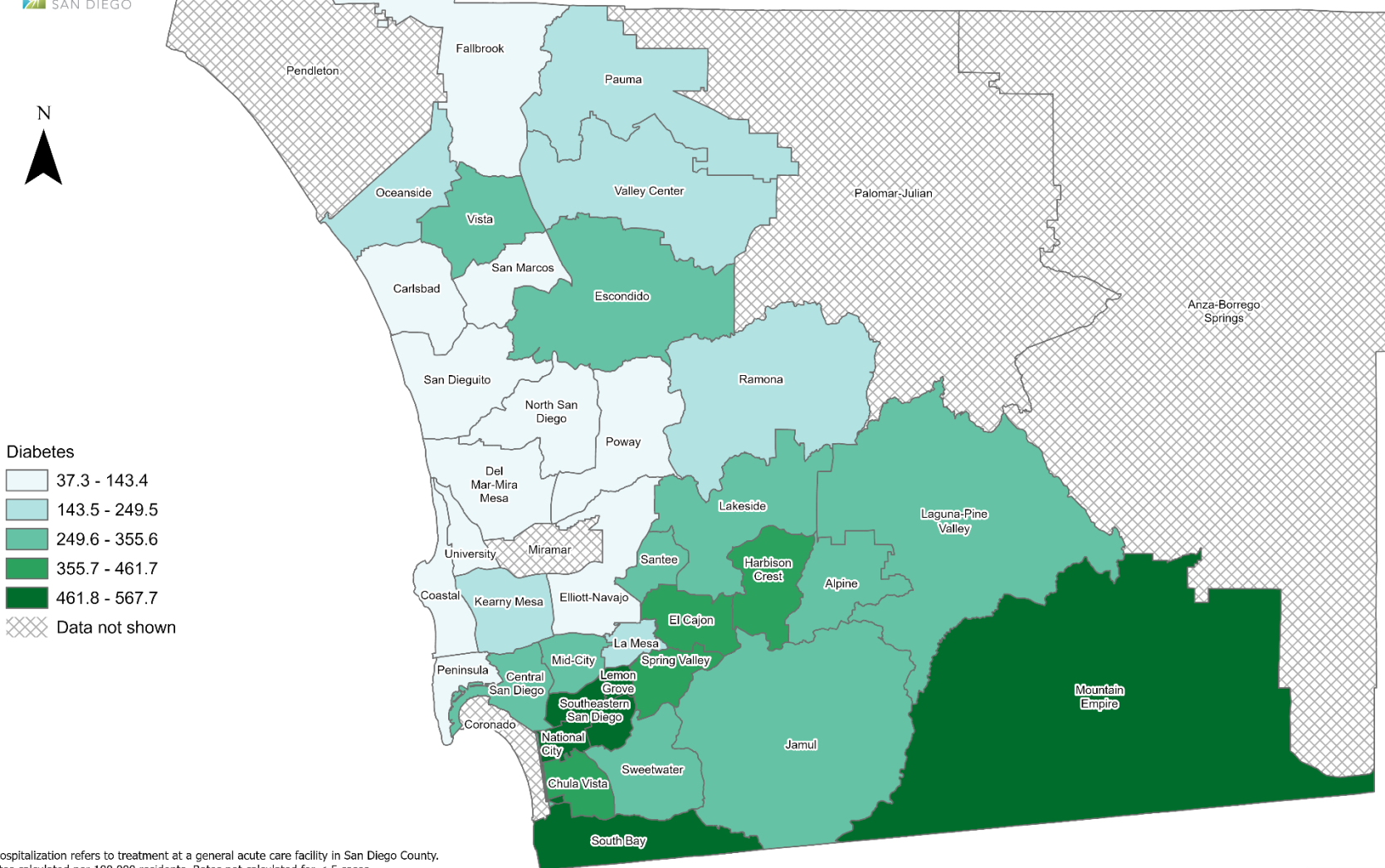


Diabetes
 27.7 - 115.8
 115.9 - 203.9
 204.0 - 292.0
 292.1 - 380.0
 380.1 - 468.1
 Data not shown

*Hospitalization refers to treatment at a general acute care facility in San Diego County. Rates calculated per 100,000 residents. Rates not calculated for < 5 cases.
 Sources: California Office of Statewide Health Planning and Development (OSHPD), 2019 Patient Discharge Database.
 Population estimates San Diego Association of Governments (SANDAG), 2019 v5/2020.



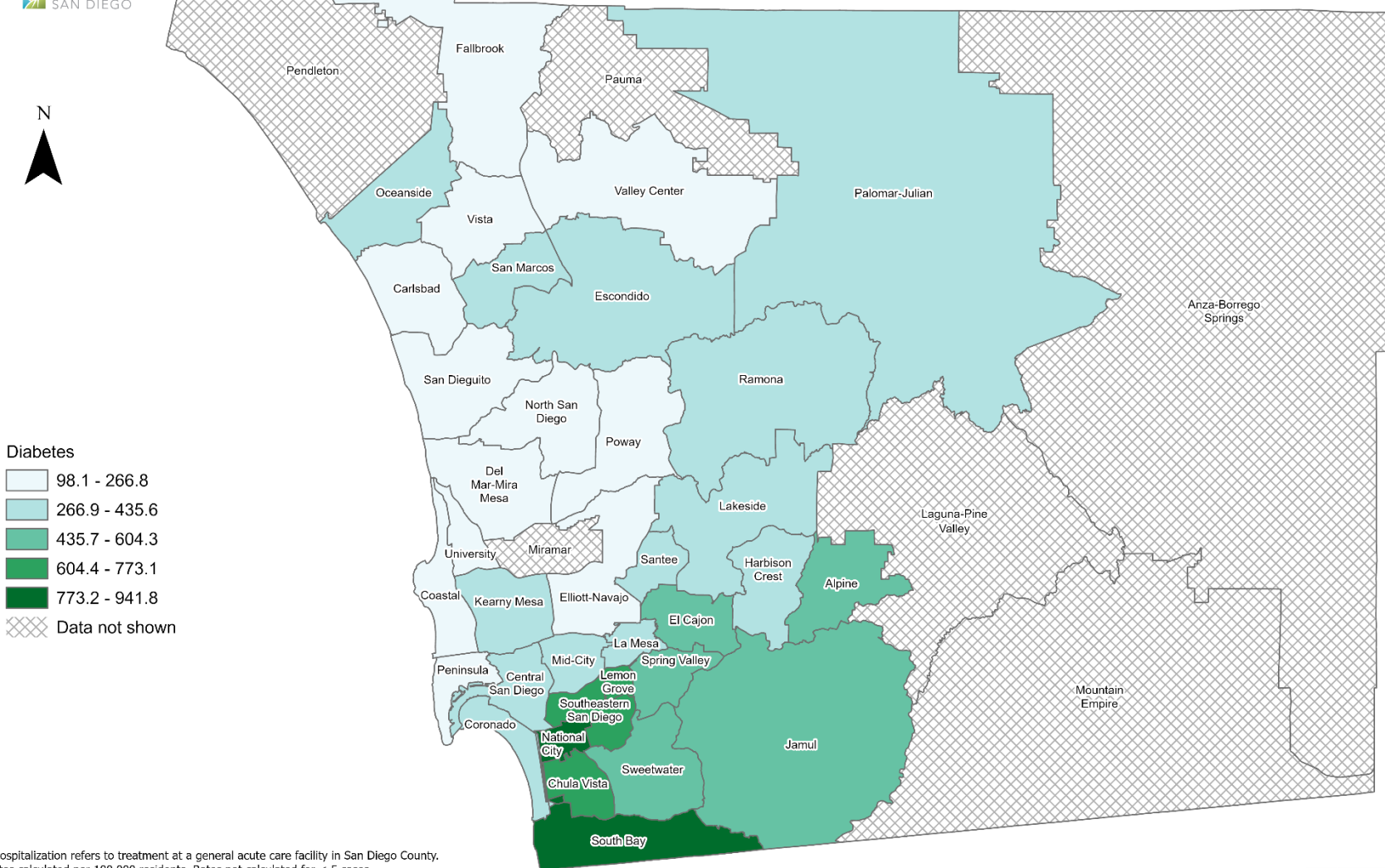
Hospitalization Rates Among Residents, Ages 45-64* San Diego County, by Subregional Area, 2019



*Hospitalization refers to treatment at a general acute care facility in San Diego County. Rates calculated per 100,000 residents. Rates not calculated for < 5 cases.
 Sources: California Office of Statewide Health Planning and Development (OSHPD), 2019 Patient Discharge Database.
 Population estimates San Diego Association of Governments (SANDAG), 2019 v5/2020.



Hospitalization Rates Among Residents, Ages 65+* San Diego County, by Subregional Area, 2019



*Hospitalization refers to treatment at a general acute care facility in San Diego County. Rates calculated per 100,000 residents. Rates not calculated for < 5 cases.
Sources: California Office of Statewide Health Planning and Development (OSHPD), 2019 Patient Discharge Database.
Population estimates San Diego Association of Governments (SANDAG), 2019 v5/2020.

Section 3

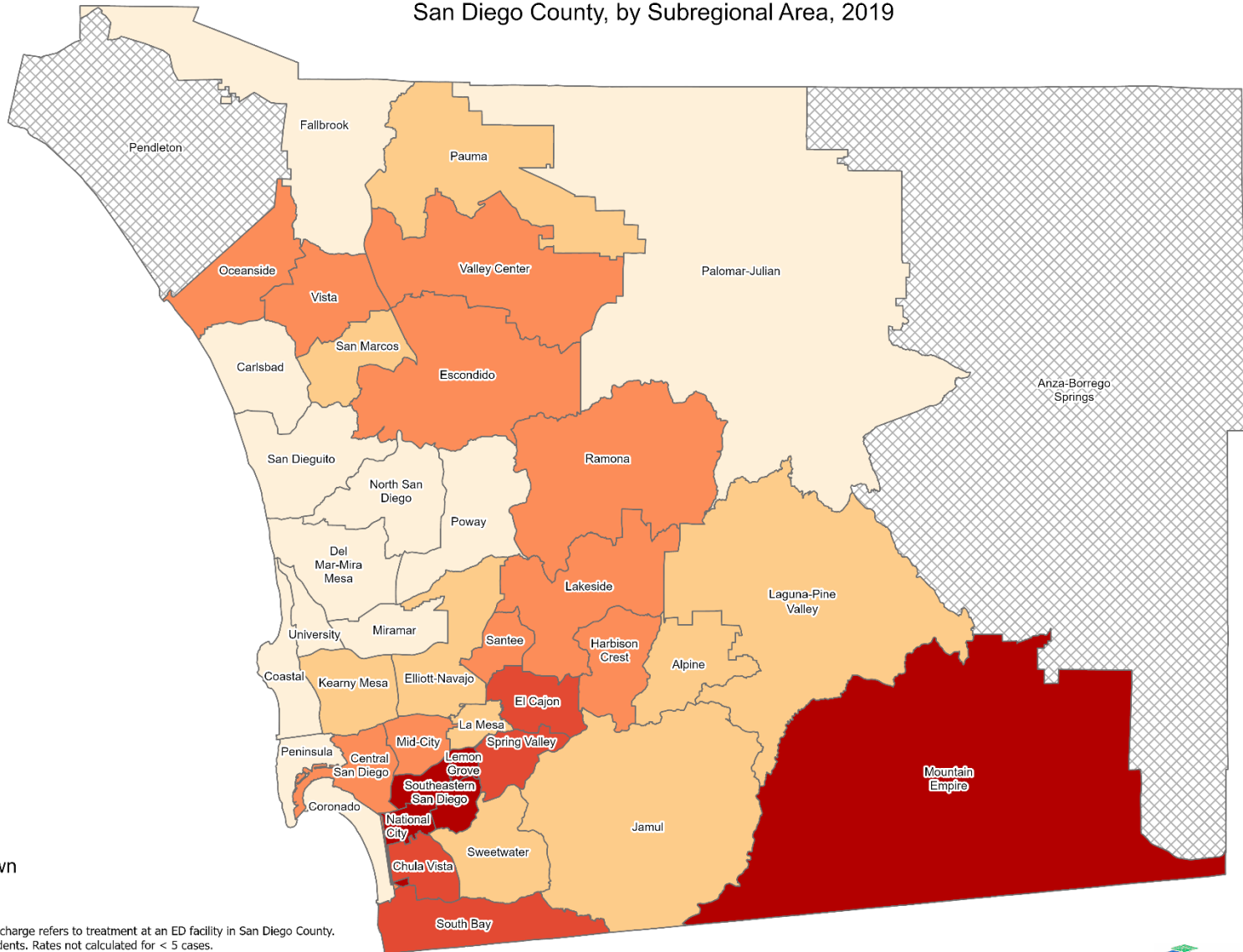
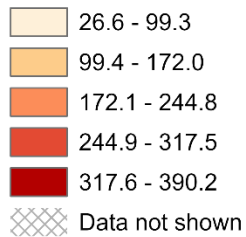
Emergency Department (ED) Discharge Rates Among San Diego County Residents by Demographics, 2019:

- Total Rate
- Race/Ethnicity
 - Asian/Pacific Islander (API)
 - Black
 - Hispanic
 - White
- Age
 - 0-14
 - 15-24
 - 25-44
 - 45-64
 - 65+

Total Emergency Department Discharge Rates* San Diego County, by Subregional Area, 2019



Diabetes



*Emergency Department (ED) Discharge refers to treatment at an ED facility in San Diego County. Rates calculated per 100,000 residents. Rates not calculated for < 5 cases.
Sources: California Office of Statewide Health Planning and Development (OSHPD), 2019 Emergency Department Discharge database. Population estimates San Diego Association of Governments (SANDAG), 2019 v5/2020.

Maps & Analysis by County of San Diego, Health and Human Services Agency, Public Health Services, Community Health Statistics Unit. Contact 619.692.6672. https://www.sandiegocounty.gov/hhsa/programs/phs/community_health_statistics/. December, 2021. LiveWellSD.org.

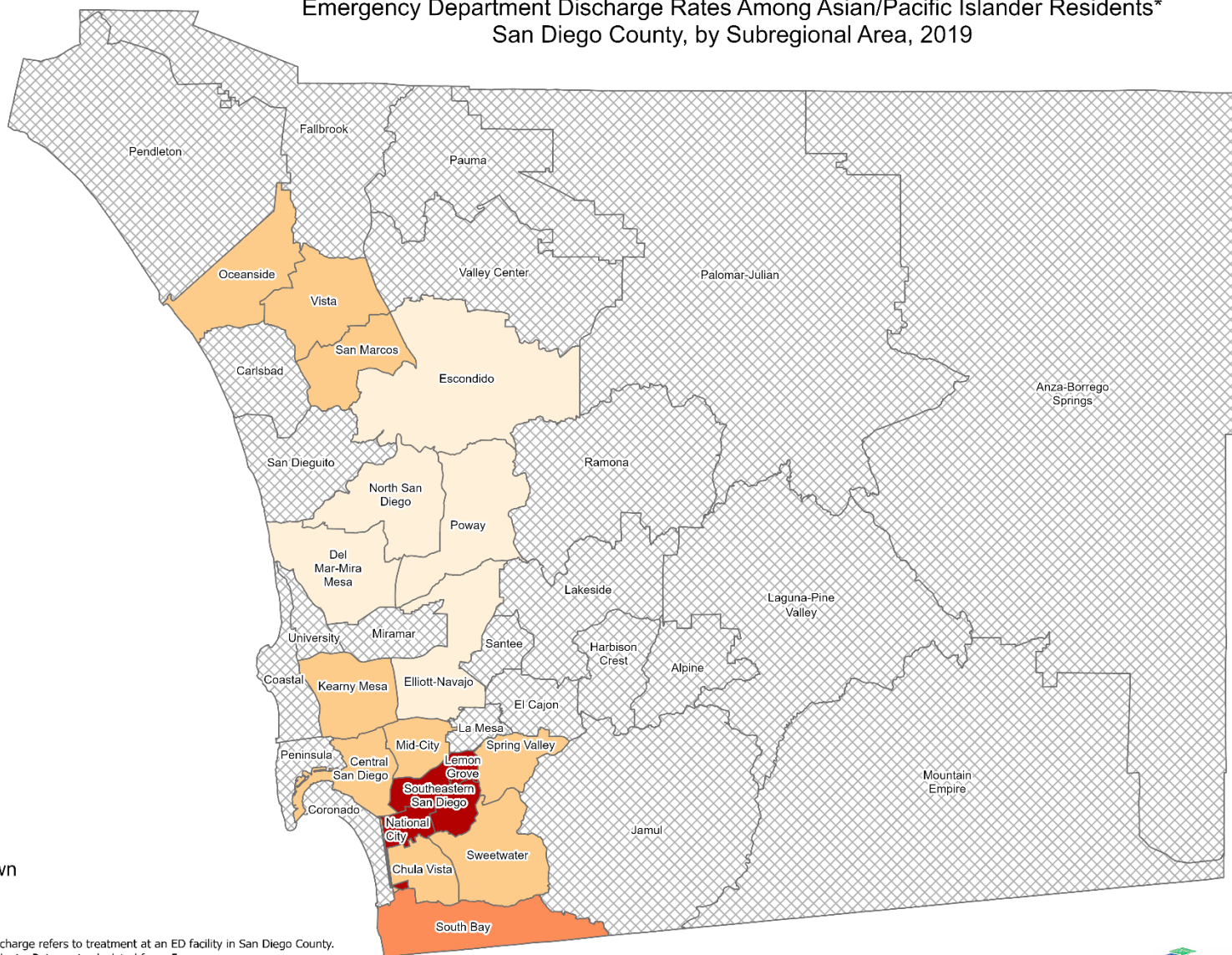
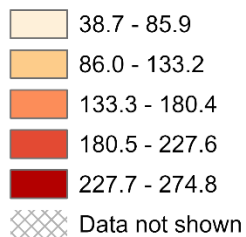




Emergency Department Discharge Rates Among Asian/Pacific Islander Residents* San Diego County, by Subregional Area, 2019

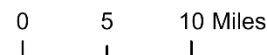


Diabetes



*Emergency Department (ED) Discharge refers to treatment at an ED facility in San Diego County. Rates calculated per 100,000 residents. Rates not calculated for < 5 cases.
Sources: California Office of Statewide Health Planning and Development (OSHPD), 2019 Emergency Department Discharge database. Population estimates San Diego Association of Governments (SANDAG), 2019 v5/2020.

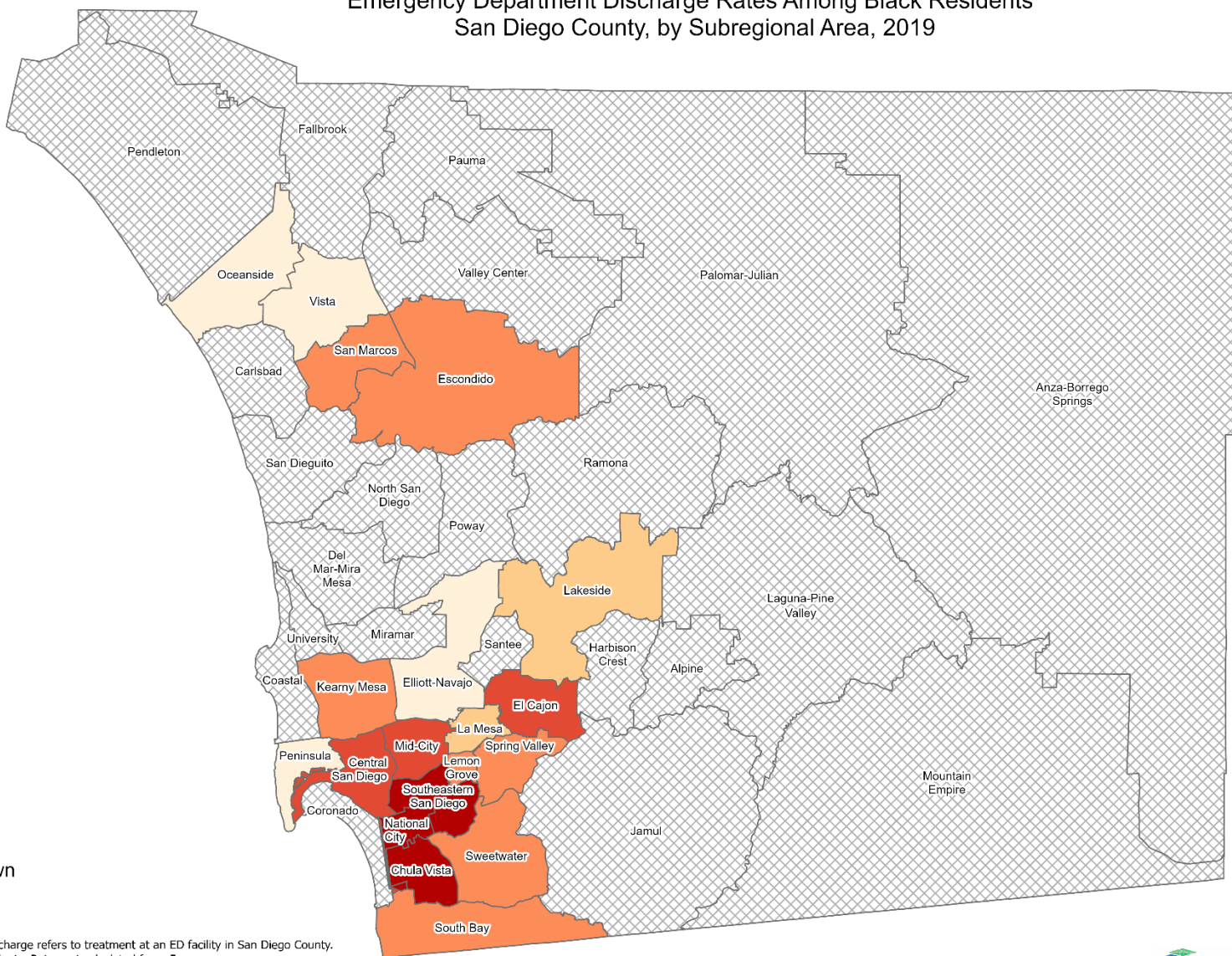
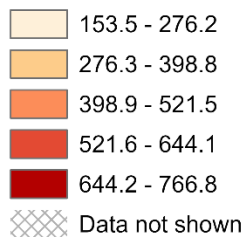
Maps & Analysis by County of San Diego, Health and Human Services Agency, Public Health Services, Community Health Statistics Unit. Contact 619.692.6672. https://www.sandiegocounty.gov/hhsa/programs/phs/community_health_statistics/. December, 2021. LiveWellSD.org.



Emergency Department Discharge Rates Among Black Residents* San Diego County, by Subregional Area, 2019

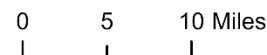


Diabetes



*Emergency Department (ED) Discharge refers to treatment at an ED facility in San Diego County. Rates calculated per 100,000 residents. Rates not calculated for < 5 cases.
Sources: California Office of Statewide Health Planning and Development (OSHPD), 2019 Emergency Department Discharge database. Population estimates San Diego Association of Governments (SANDAG), 2019 v5/2020.

Maps & Analysis by County of San Diego, Health and Human Services Agency, Public Health Services, Community Health Statistics Unit. Contact 619.692.6672. https://www.sandiegocounty.gov/hhsa/programs/phs/community_health_statistics/. December, 2021. LiveWellSD.org.

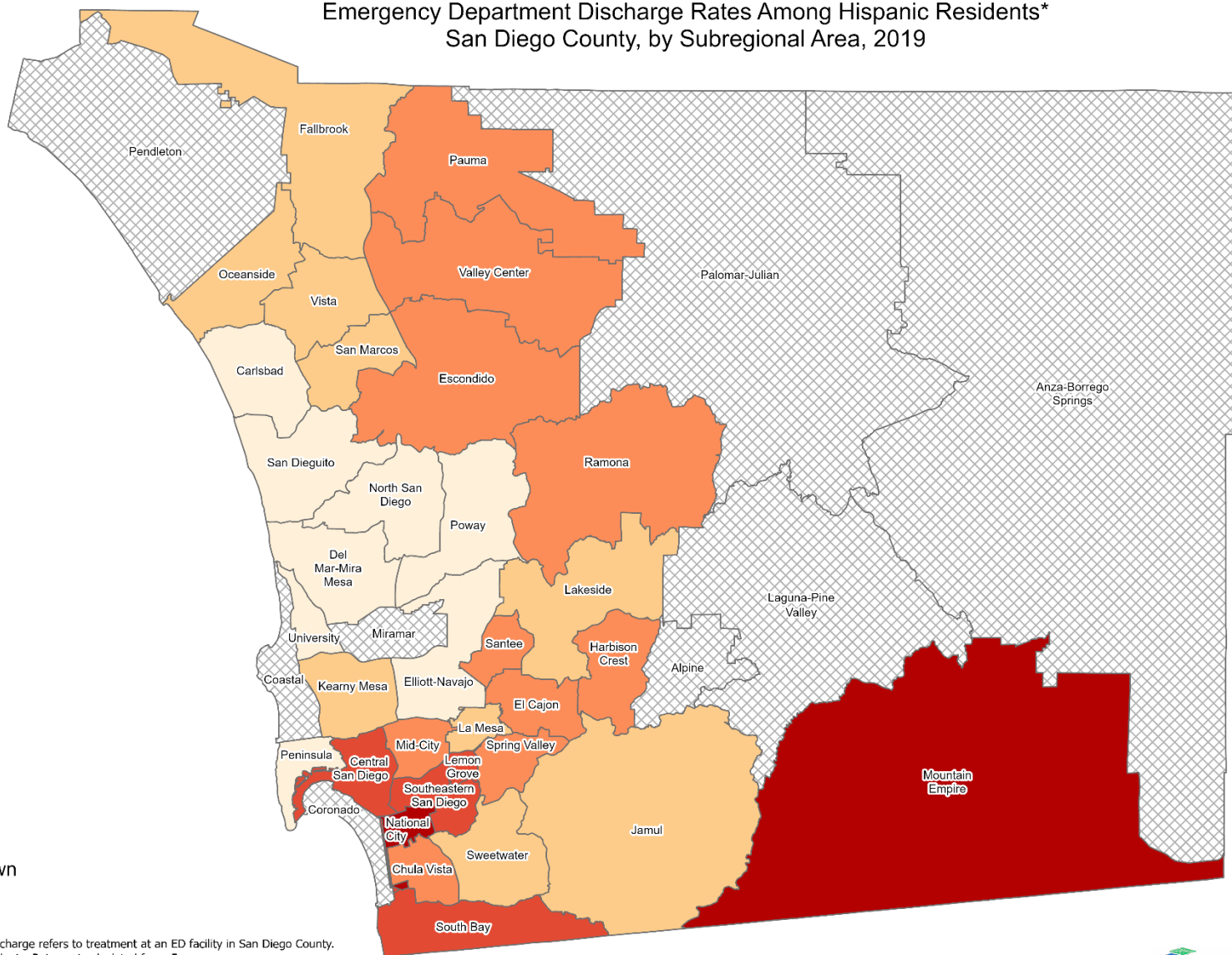
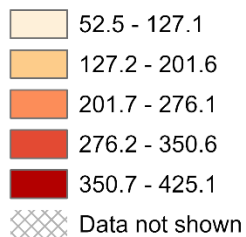




Emergency Department Discharge Rates Among Hispanic Residents* San Diego County, by Subregional Area, 2019

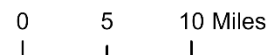


Diabetes



*Emergency Department (ED) Discharge refers to treatment at an ED facility in San Diego County. Rates calculated per 100,000 residents. Rates not calculated for < 5 cases.
Sources: California Office of Statewide Health Planning and Development (OSHPD), 2019 Emergency Department Discharge database. Population estimates San Diego Association of Governments (SANDAG), 2019 v5/2020.

Maps & Analysis by County of San Diego, Health and Human Services Agency, Public Health Services, Community Health Statistics Unit. Contact 619.692.6672. https://www.sandiegocounty.gov/hhsa/programs/phs/community_health_statistics/. December, 2021. LiveWellSD.org.

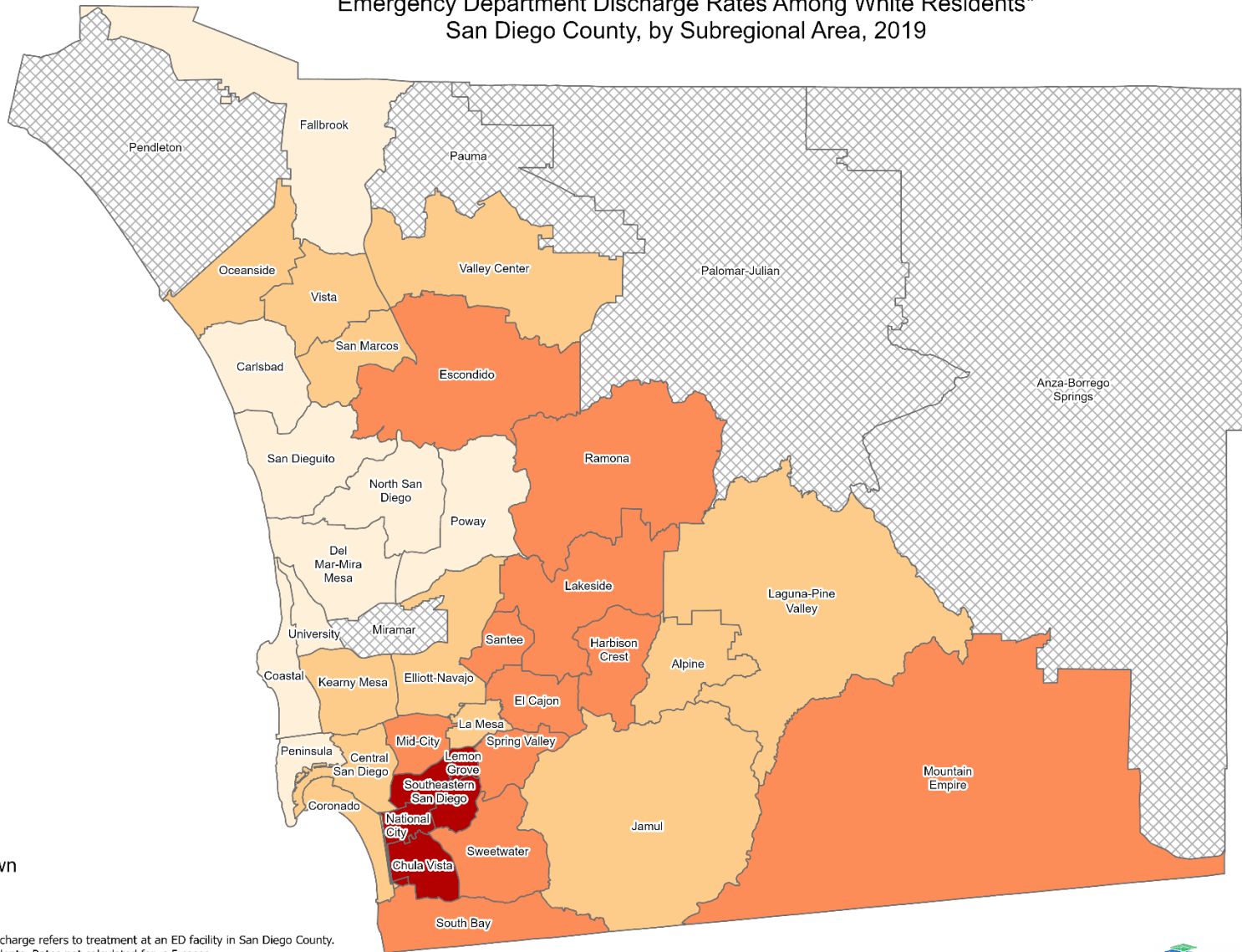
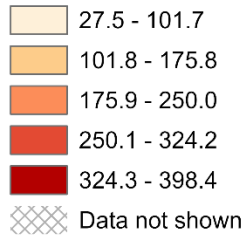




Emergency Department Discharge Rates Among White Residents* San Diego County, by Subregional Area, 2019

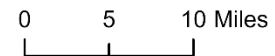


Diabetes



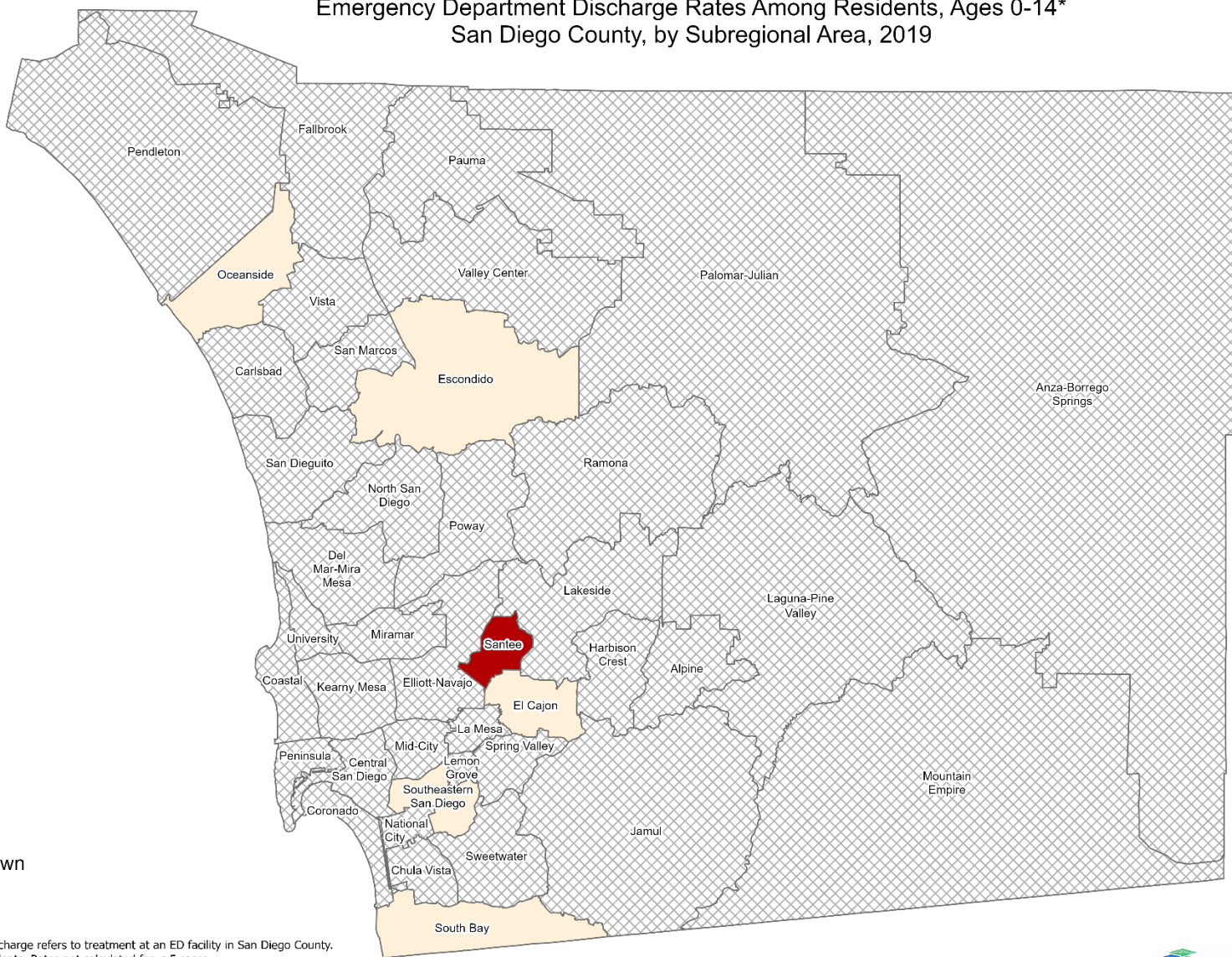
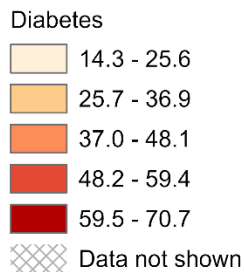
*Emergency Department (ED) Discharge refers to treatment at an ED facility in San Diego County. Rates calculated per 100,000 residents. Rates not calculated for < 5 cases.
Sources: California Office of Statewide Health Planning and Development (OSHPD), 2019 Emergency Department Discharge database. Population estimates San Diego Association of Governments (SANDAG), 2019 v5/2020.

Maps & Analysis by County of San Diego, Health and Human Services Agency, Public Health Services, Community Health Statistics Unit. Contact 619.692.6672. https://www.sandiegocounty.gov/hhsa/programs/phs/community_health_statistics/. December, 2021. LiveWellSD.org.



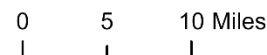


Emergency Department Discharge Rates Among Residents, Ages 0-14* San Diego County, by Subregional Area, 2019

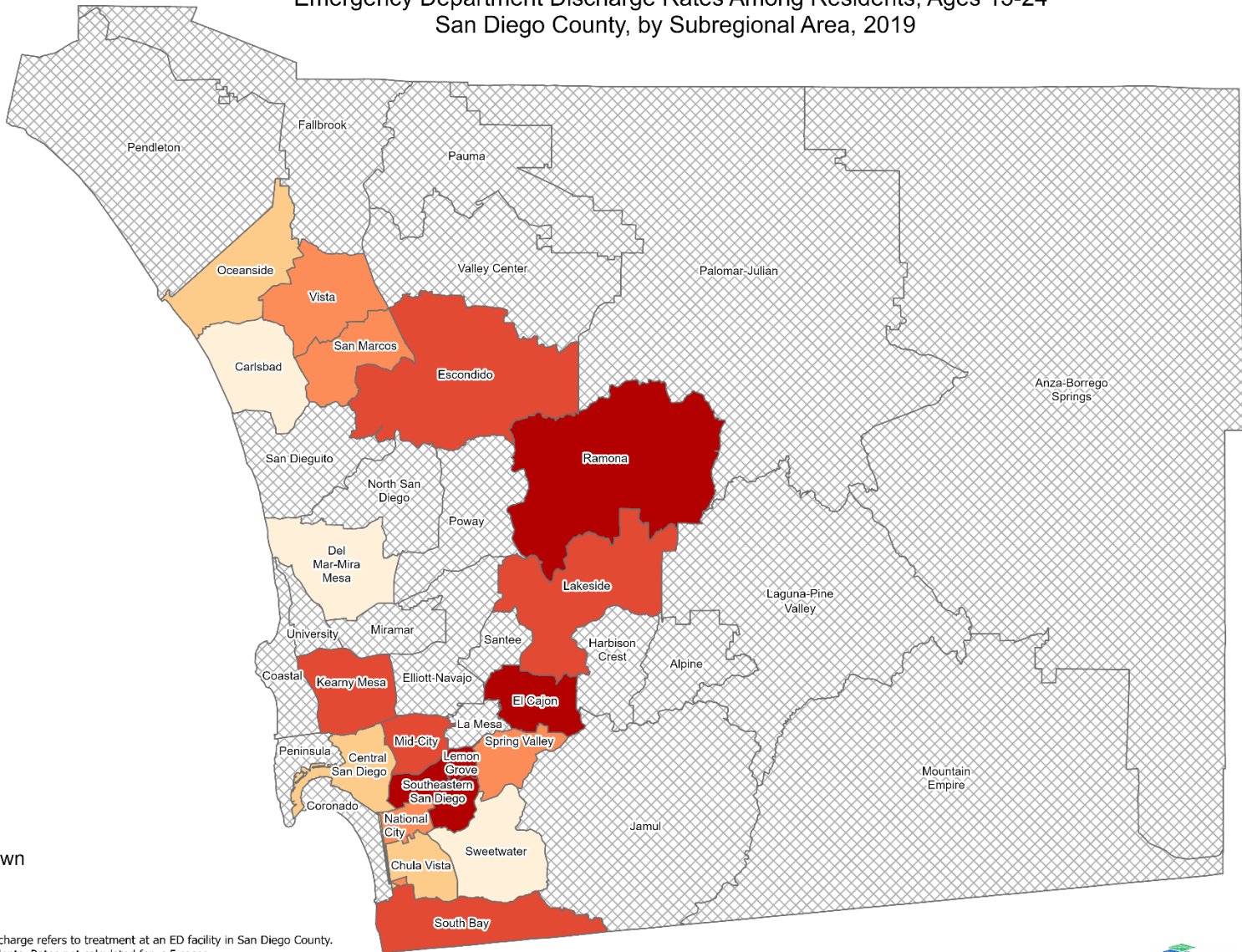
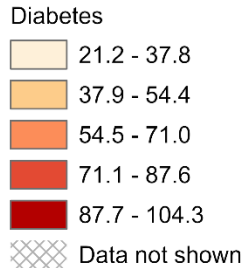


*Emergency Department (ED) Discharge refers to treatment at an ED facility in San Diego County. Rates calculated per 100,000 residents. Rates not calculated for < 5 cases. Sources: California Office of Statewide Health Planning and Development (OSHPD), 2019 Emergency Department Discharge database. Population estimates San Diego Association of Governments (SANDAG), 2019 v5/2020.

Maps & Analysis by County of San Diego, Health and Human Services Agency, Public Health Services, Community Health Statistics Unit. Contact 619.692.6672. https://www.sandiegocounty.gov/hhsa/programs/phs/community_health_statistics/. December, 2021. LiveWellSD.org.



Emergency Department Discharge Rates Among Residents, Ages 15-24* San Diego County, by Subregional Area, 2019



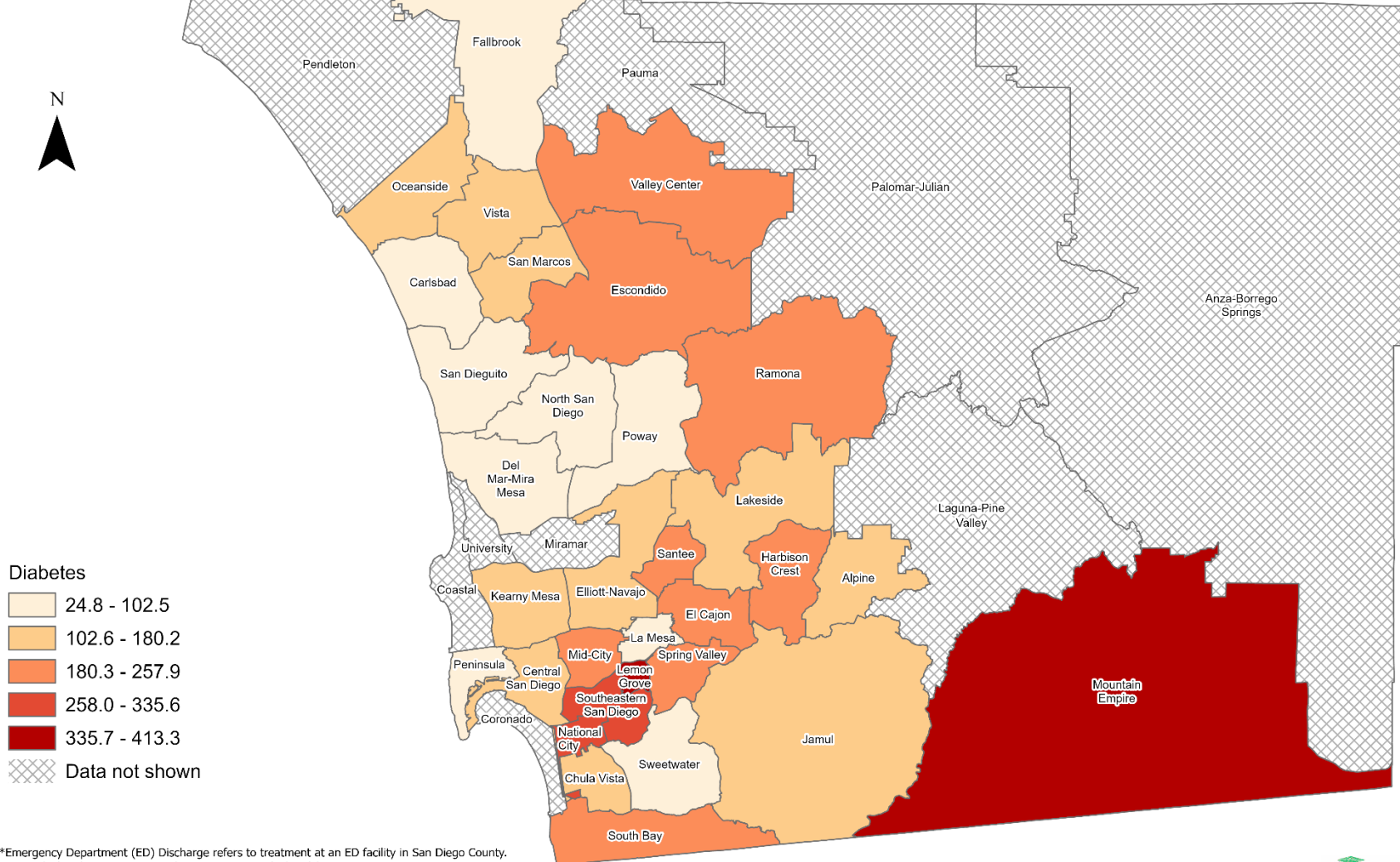
*Emergency Department (ED) Discharge refers to treatment at an ED facility in San Diego County. Rates calculated per 100,000 residents. Rates not calculated for < 5 cases.
Sources: California Office of Statewide Health Planning and Development (OSHPD), 2019 Emergency Department Discharge database. Population estimates San Diego Association of Governments (SANDAG), 2019 v5/2020.

Maps & Analysis by County of San Diego, Health and Human Services Agency, Public Health Services, Community Health Statistics Unit. Contact 619.692.6672. https://www.sandiegocounty.gov/hhsa/programs/phs/community_health_statistics/. December, 2021. LiveWellSD.org.



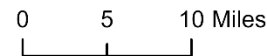


Emergency Department Discharge Rates Among Residents, Ages 25-44* San Diego County, by Subregional Area, 2019



*Emergency Department (ED) Discharge refers to treatment at an ED facility in San Diego County. Rates calculated per 100,000 residents. Rates not calculated for < 5 cases. Sources: California Office of Statewide Health Planning and Development (OSHPD), 2019 Emergency Department Discharge database. Population estimates San Diego Association of Governments (SANDAG), 2019 v5/2020.

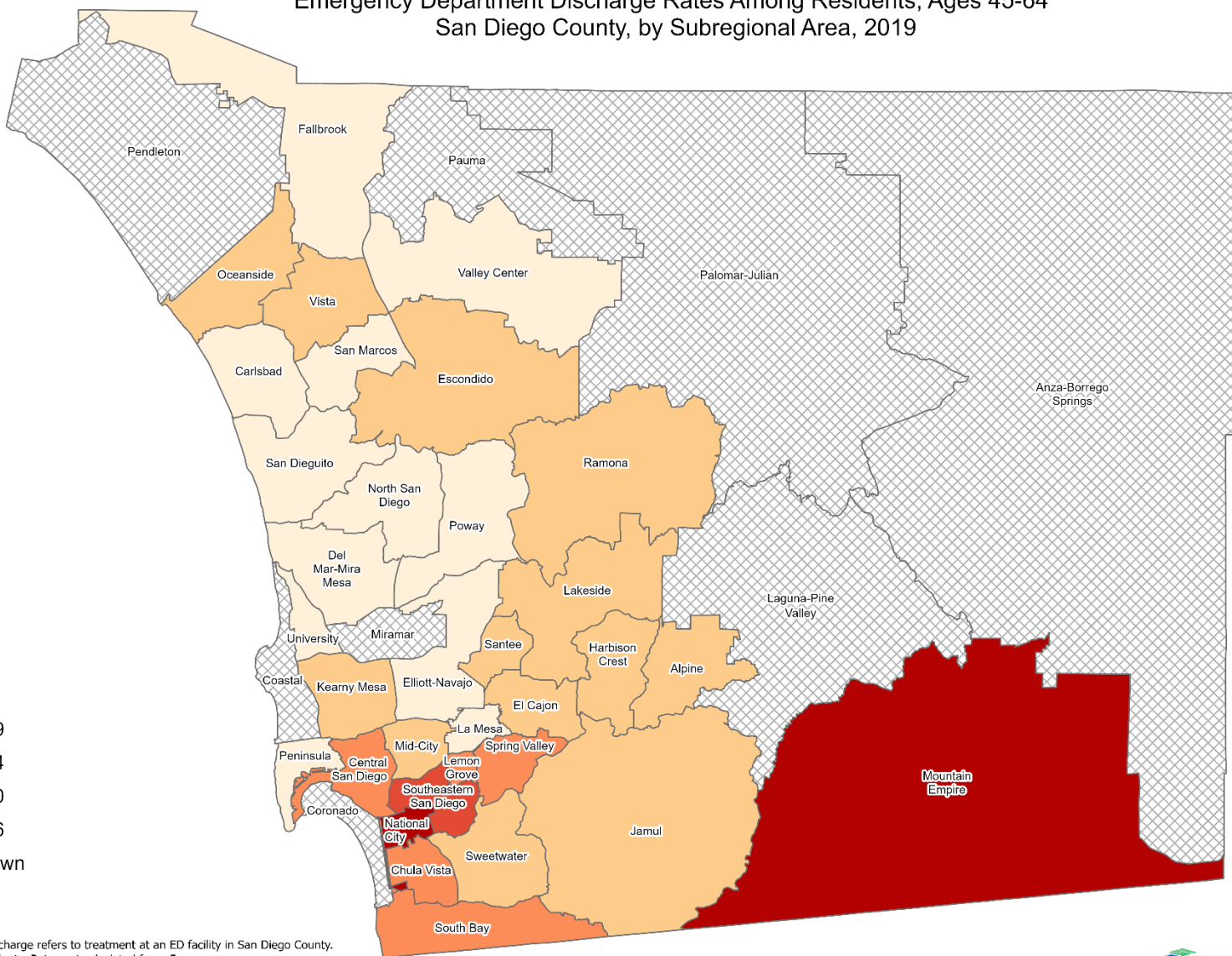
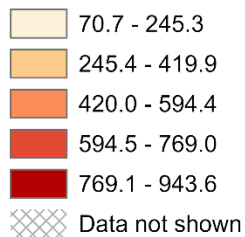
Maps & Analysis by County of San Diego, Health and Human Services Agency, Public Health Services, Community Health Statistics Unit. Contact 619.692.6672. https://www.sandiegocounty.gov/hhsa/programs/phs/community_health_statistics/. December, 2021. LiveWellSD.org.



Emergency Department Discharge Rates Among Residents, Ages 45-64* San Diego County, by Subregional Area, 2019

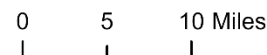


Diabetes



*Emergency Department (ED) Discharge refers to treatment at an ED facility in San Diego County. Rates calculated per 100,000 residents. Rates not calculated for < 5 cases.
Sources: California Office of Statewide Health Planning and Development (OSHPD), 2019 Emergency Department Discharge database. Population estimates San Diego Association of Governments (SANDAG), 2019 v5/2020.

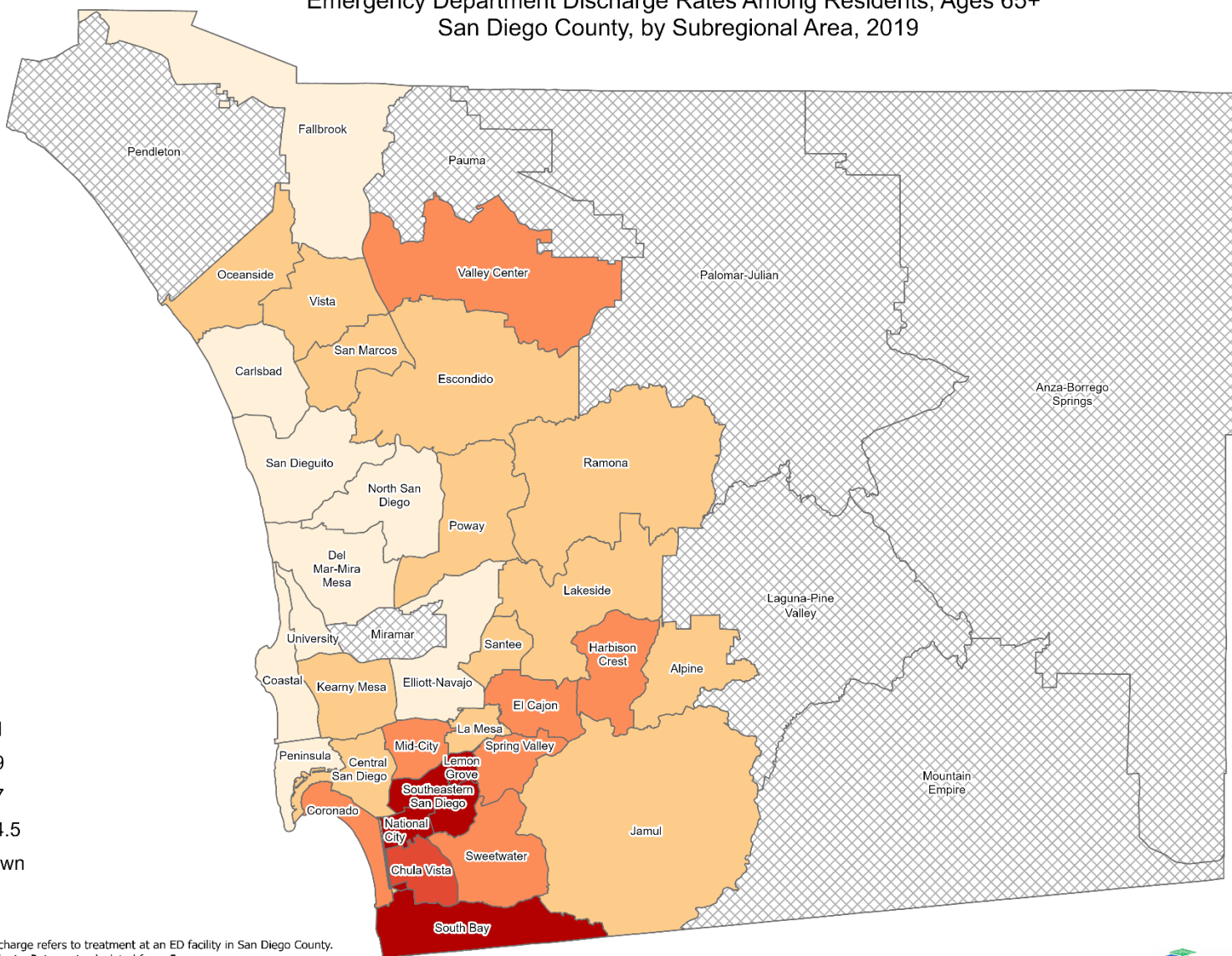
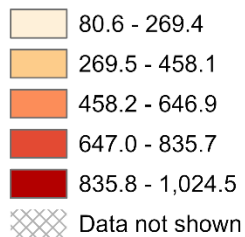
Maps & Analysis by County of San Diego, Health and Human Services Agency, Public Health Services, Community Health Statistics Unit. Contact 619.692.6672. https://www.sandiegocounty.gov/hhsa/programs/phs/community_health_statistics/. December, 2021. LiveWellSD.org.



Emergency Department Discharge Rates Among Residents, Ages 65+* San Diego County, by Subregional Area, 2019

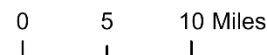


Diabetes



*Emergency Department (ED) Discharge refers to treatment at an ED facility in San Diego County. Rates calculated per 100,000 residents. Rates not calculated for < 5 cases.
Sources: California Office of Statewide Health Planning and Development (OSHPD), 2019 Emergency Department Discharge database. Population estimates San Diego Association of Governments (SANDAG), 2019 v5/2020.

Maps & Analysis by County of San Diego, Health and Human Services Agency, Public Health Services, Community Health Statistics Unit. Contact 619.692.6672. https://www.sandiegocounty.gov/hhsa/programs/phs/community_health_statistics/. December, 2021. LiveWellSD.org.



Section 4

In-Patient Treatment (IPT) Rates Among San Diego County Residents by Demographics, 2019:

- Total Rate
- Race/Ethnicity
 - Asian/Pacific Islander (API)
 - Black
 - Hispanic
 - White
- Age
 - 0-14
 - 15-24
 - 25-44
 - 45-64
 - 65+

No SRA-level rate data available for this section