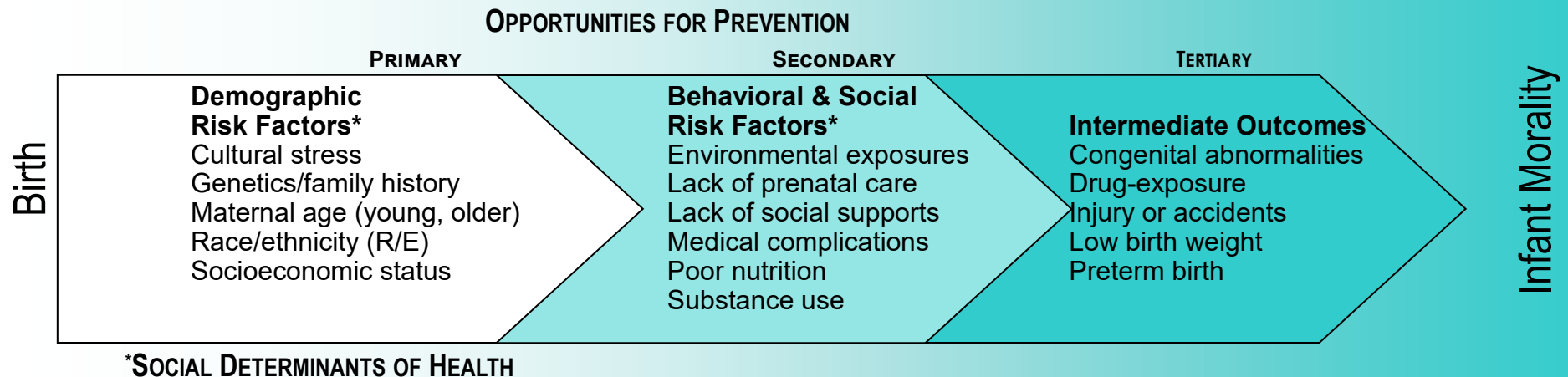
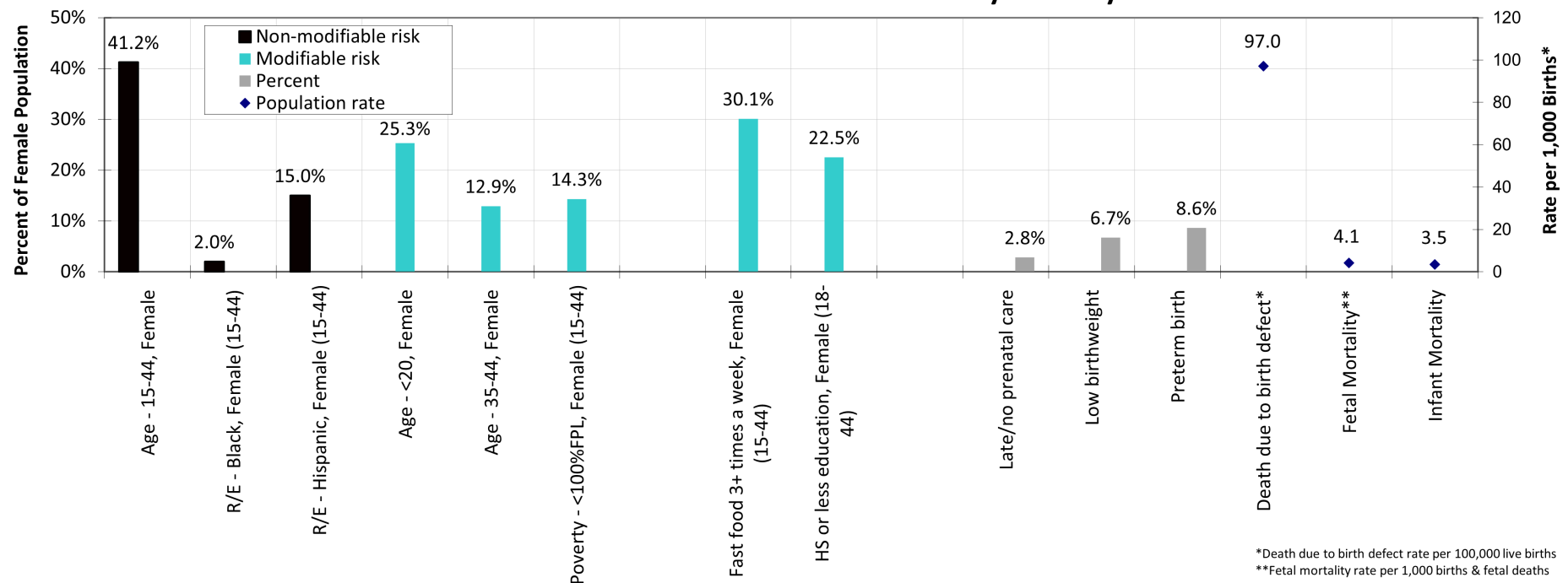


Infant Mortality



Characteristics of Female Residents, San Diego County
Selected Elements from Infant Mortality Pathway



Sources



San Diego Association of Governments (SANDAG), 2019 Demographic Estimates, released 05/2020.

UCLA Center for Health Policy Research, Los Angeles, CA. AskCHIS 2020. Poverty Level. Available at <http://ask.chis.ucla.edu>. Exported on 8/15/2022.

UCLA Center for Health Policy Research, Los Angeles, CA. AskCHIS 2016. Fast food eaten how many times in past week. Available at <http://ask.chis.ucla.edu>. Exported on 8/15/2022.

UCLA Center for Health Policy Research, Los Angeles, CA. AskCHIS 2020. Education Level Completed. Available at <http://ask.chis.ucla.edu>. Exported on 8/15/2022.

State of California, Department of Public Health, Center for Health Statistics and Informatics, Birth Statistical Master Files and California Comprehensive Birth Files, 2019, 2020

State of California, Department of Public Health, Death Statistical Master Files (before 2014), California Comprehensive Death Files (2014 and later), Birth Statistical Master Files (before 2017), and California Comprehensive Birth Files (2017 and later).