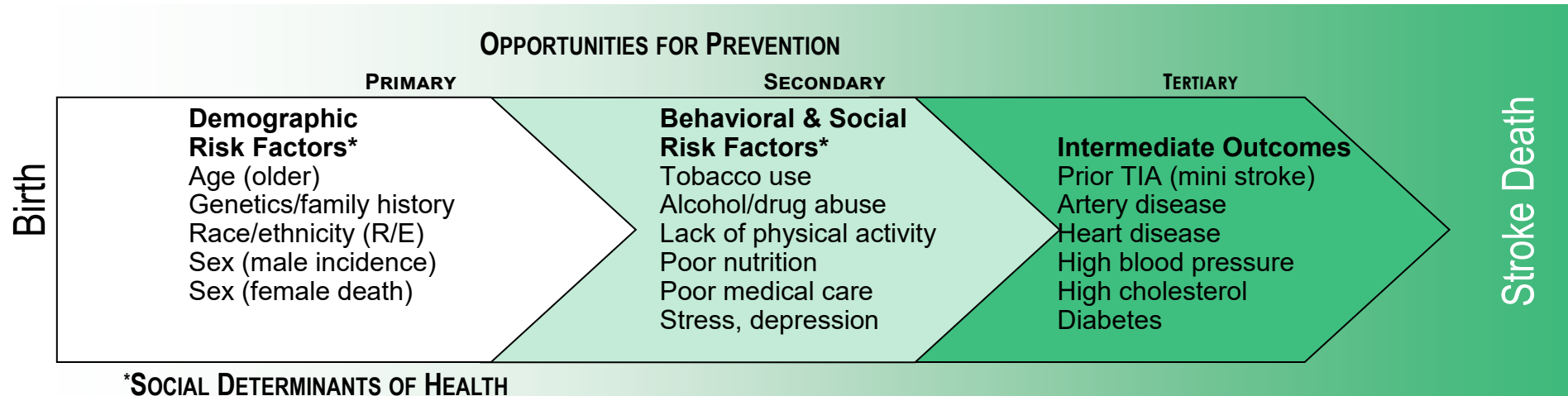
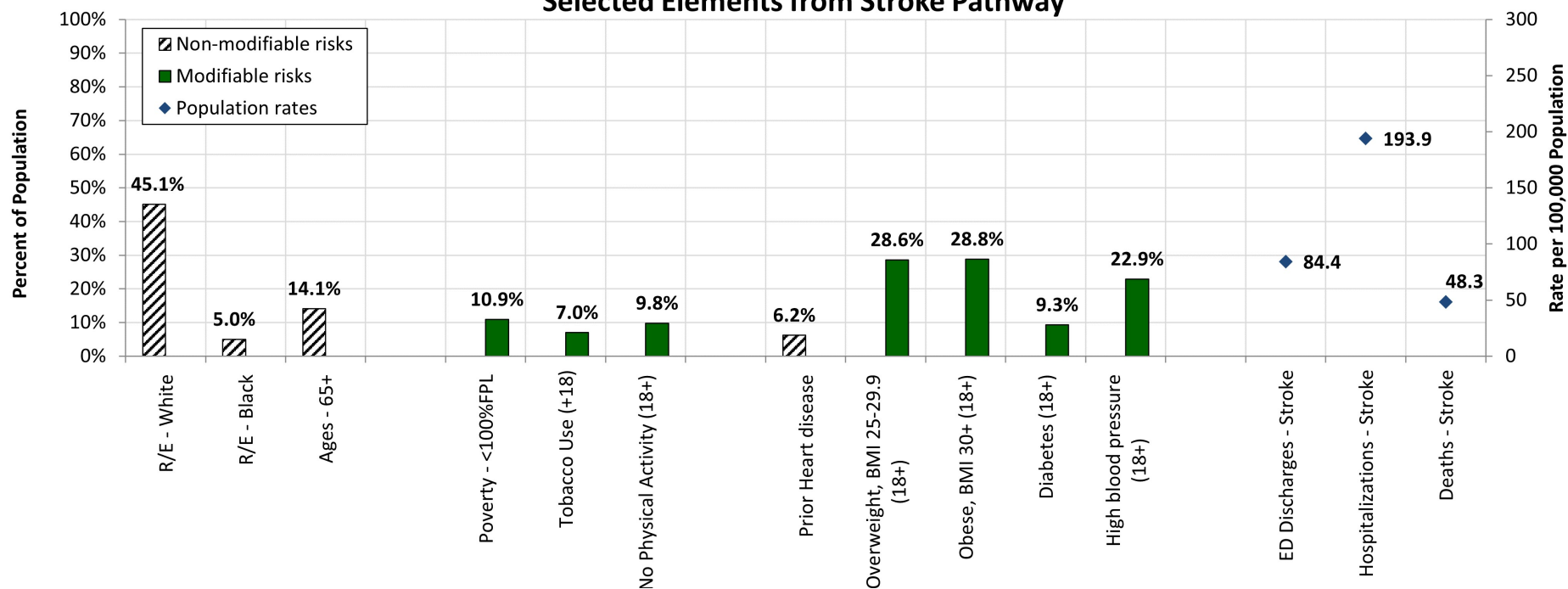


Stroke



Characteristics of Residents, San Diego County Selected Elements from Stroke Pathway



Sources



San Diego Association of Governments (SANDAG), 2019 Demographic Estimates, released 05/2020.

UCLA Center for Health Policy Research, Los Angeles, CA. AskCHIS 2019. Income as a percentage of the Federal Poverty Level (FPL). Available at <http://ask.chis.ucla.edu>. Exported on May 16, 2022.

UCLA Center for Health Policy Research, Los Angeles, CA. AskCHIS 2019. Adults who smoked 100 or more cigarettes in their life were asked about their current smoking habits. Adults who smoked fewer than 100 cigarettes or don't currently smoke are considered non-smokers. Available at <http://ask.chis.ucla.edu>. Exported on May 19, 2022.

UCLA Center for Health Policy Research, Los Angeles, CA. AskCHIS 2018. In the past 7 days, on how many days did you exercise for at least 20 minutes at a time?. Available at <http://ask.chis.ucla.edu>. Exported on May 19, 2022.

UCLA Center for Health Policy Research, Los Angeles, CA. AskCHIS 2019. Has a doctor ever told you that you have any kind of heart disease?. Available at <http://ask.chis.ucla.edu>. Exported on May 16, 2022.

UCLA Center for Health Policy Research, Los Angeles, CA. AskCHIS 2019. Body Mass Index - 4 level (adult only). Available at <http://ask.chis.ucla.edu>. Exported on May 16, 2022.

UCLA Center for Health Policy Research, Los Angeles, CA. AskCHIS 2019. {Other than during pregnancy, had/Has} a doctor ever told you that you have diabetes or sugar diabetes?. Available at <http://ask.chis.ucla.edu>. Exported on May 16, 2022.

UCLA Center for Health Policy Research, Los Angeles, CA. AskCHIS 2019. Has a doctor ever told you that you have high blood pressure?. Available at <http://ask.chis.ucla.edu>. Exported on May 16, 2022.

California Office of Statewide Health Planning and Development (OSHPD), 2019 Emergency Department Discharge database.

California Office of Statewide Health Planning and Development (OSHPD), 2019 Patient Discharge Database.

California Department of Public Health, Center for Health Statistics, Office of Health Information and Research, Vital Records Business Intelligence System (VRBIS), 2019.