

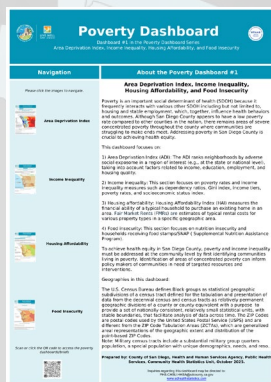


# POVERTY

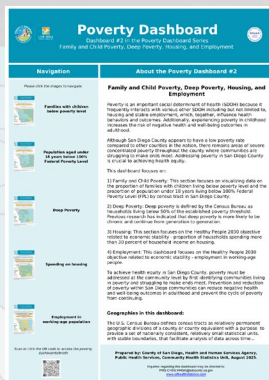
## in San Diego County



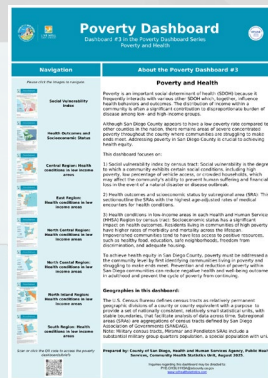
Poverty is an important social determinant of health and communities with high rates of poverty have higher rates of morbidity and mortality.



**Dashboard #1**  
Area Deprivation Index, Income Inequality, Housing Affordability, Food Insecurity



**Dashboard #2**  
Family and Child Poverty, Deep Poverty, Housing, Employment



**Dashboard #3**  
Social Vulnerability, Poverty and Morbidity, Poverty and Mortality

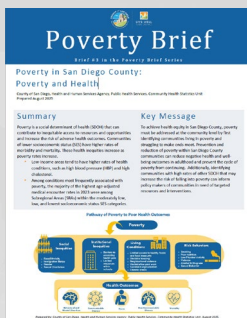
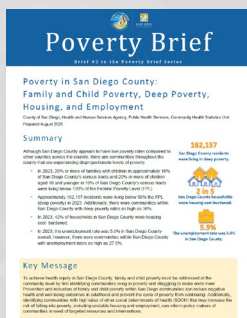
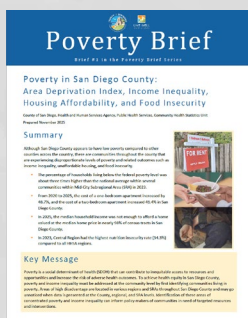


The median household income was not enough to afford a home (at median price) in nearly **99% of census tracts** in 2025.

**2 in 5 households** were housing cost-burdened in 2023.

In 2022, **137 census tracts** had high social vulnerability.

Scan or click the QR Codes to access the dashboards/briefs  
The **Poverty Briefs** highlight the key-takeaways from the data dashboards.



County of San Diego, Health and Human Services Agency, Public Health Services, Community Health Statistics Unit  
[www.sdhealthstatistics.com](http://www.sdhealthstatistics.com)