



# 2021 MAP ATLAS

## Overall Heart Disease

AUGUST 2023



County of San Diego | Health and Human  
Services Agency | Public Health Services |  
Community Health Statistics Unit



## Data Sources

**Death\*** is based on underlying cause of death among San Diego County residents. Rates calculated per 100,000 residents. Rates not calculated for < 11 cases. Maps not produced for conditions/outcomes with no SRA-level rates. Some sections may have no maps.

Sources: California Department of Public Health, Center for Health Statistics, Office of Health Information and Research, Vital Records Business Intelligence System (VRBIS), 2021. ***The COVID-19 pandemic was associated with increases in all-cause mortality. COVID-19 deaths have affected the patterns of mortality.*** SANDAG: San Diego Association of Governments (SANDAG) Population Estimates, 2021 (v09/2022). ***Population estimates for 2021 were derived using the 2010 Census and data should be considered preliminary.***

\*For substance/drug overdoses, death rate is based on the multiple/contributing cause of death among San Diego County residents.

**Hospitalization** refers to treatment at a general acute care facility in San Diego County. Rates calculated per 100,000 residents. Rates not calculated for < 11 cases. Maps not produced for conditions/outcomes with no SRA-level rates. Some sections may have no maps.

Sources: California Department of Health Care Access and Information (HCAI), Patient Discharge Database, 2021. San Diego Association of Governments (SANDAG) Population Estimates, 2021 (v09/2022). ***Population estimates for 2021 were derived using the 2010 Census and data should be considered preliminary.***

**Emergency Department (ED) Discharge** refers to treatment at an ED facility in San Diego County.

Rates calculated per 100,000 residents. Rates not calculated for < 11 cases. Maps not produced for conditions/outcomes with no SRA-level rates. Some sections may have no maps.

Sources: California Department of Health Care Access and Information (HCAI), Emergency Department Discharge Database, 2021. San Diego Association of Governments (SANDAG) Population Estimates, 2021 (v09/2022). ***Population estimates for 2021 were derived using the 2010 Census and data should be considered preliminary.***

**In-Patient Treatment (IPT)** refers to treatment at a psychiatric care or chemical rehabilitation facility in San Diego County. Rates calculated per 100,000 residents. Rates not calculated for < 11 cases. Maps not produced for conditions/outcomes with no SRA-level rates. Some sections may have no maps.

Sources: California Department of Health Care Access and Information (HCAI), Patient Discharge Database, 2021. San Diego Association of Governments (SANDAG) Population Estimates, 2021 (v09/2022). ***Population estimates for 2021 were derived using the 2010 Census and data should be considered preliminary.***

Maps & Analysis by County of San Diego, Health and Human Services Agency, Public Health Services, Community Health Statistics Unit. Contact 619.692.6672. August 2023.

[https://www.sandiegocounty.gov/hhsa/programs/phs/community\\_health\\_statistics/](https://www.sandiegocounty.gov/hhsa/programs/phs/community_health_statistics/)  
LiveWellSD.org.

For more detailed explanation of geography, methods, and sources, please refer to CHSU's [2020 Community Profiles Data Guide and Data Dictionary Dashboards](#).

# Table of Contents

Section 1: Deaths .....	1
Section 2: Hospitalizations .....	11
Section 3: Emergency Department (ED) Discharges .....	24
Section 4: In-Patient Treatments (IPT) .....	39

# SECTION 1

## Death Rates Among San Diego County Residents by Demographics, 2021:

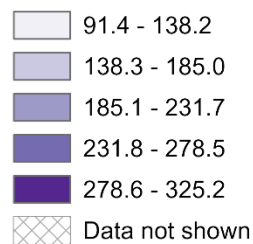
- Total Rate
  - Race/Ethnicity
    - Asian/Pacific Islander (API)
    - Black
    - Hispanic
    - White
  - Age Group
    - 0-9 Years
    - 10-19 Years
    - 20-29 Years
    - 30-39 Years
    - 40-49 Years
    - 50-59 Years
    - 60-69 Years
    - 70-79 Years
    - 80+ Years



# Total Death Rates\* San Diego County, by Subregional Area, 2021

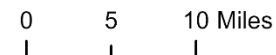
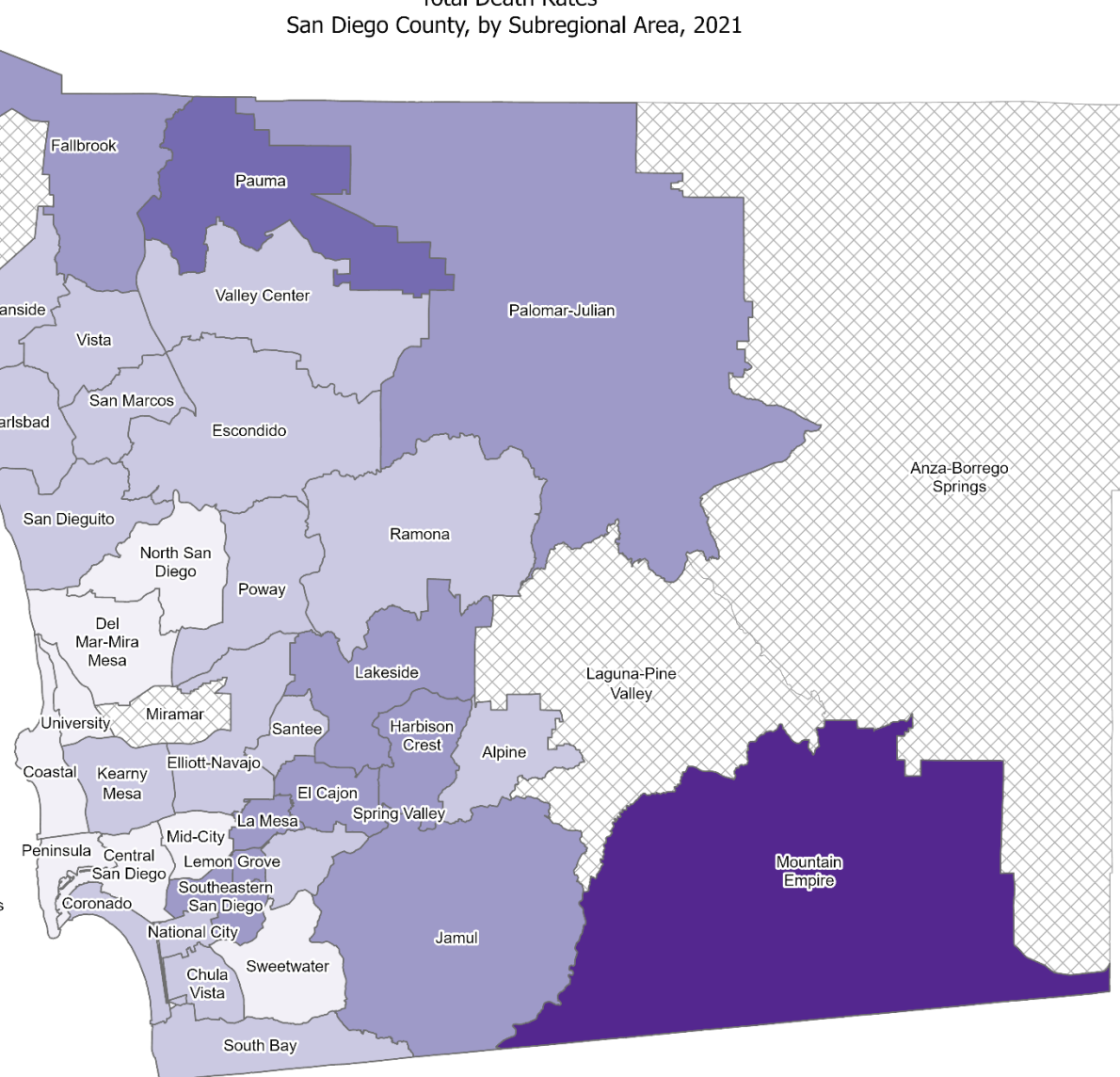


## Overall Heart Disease



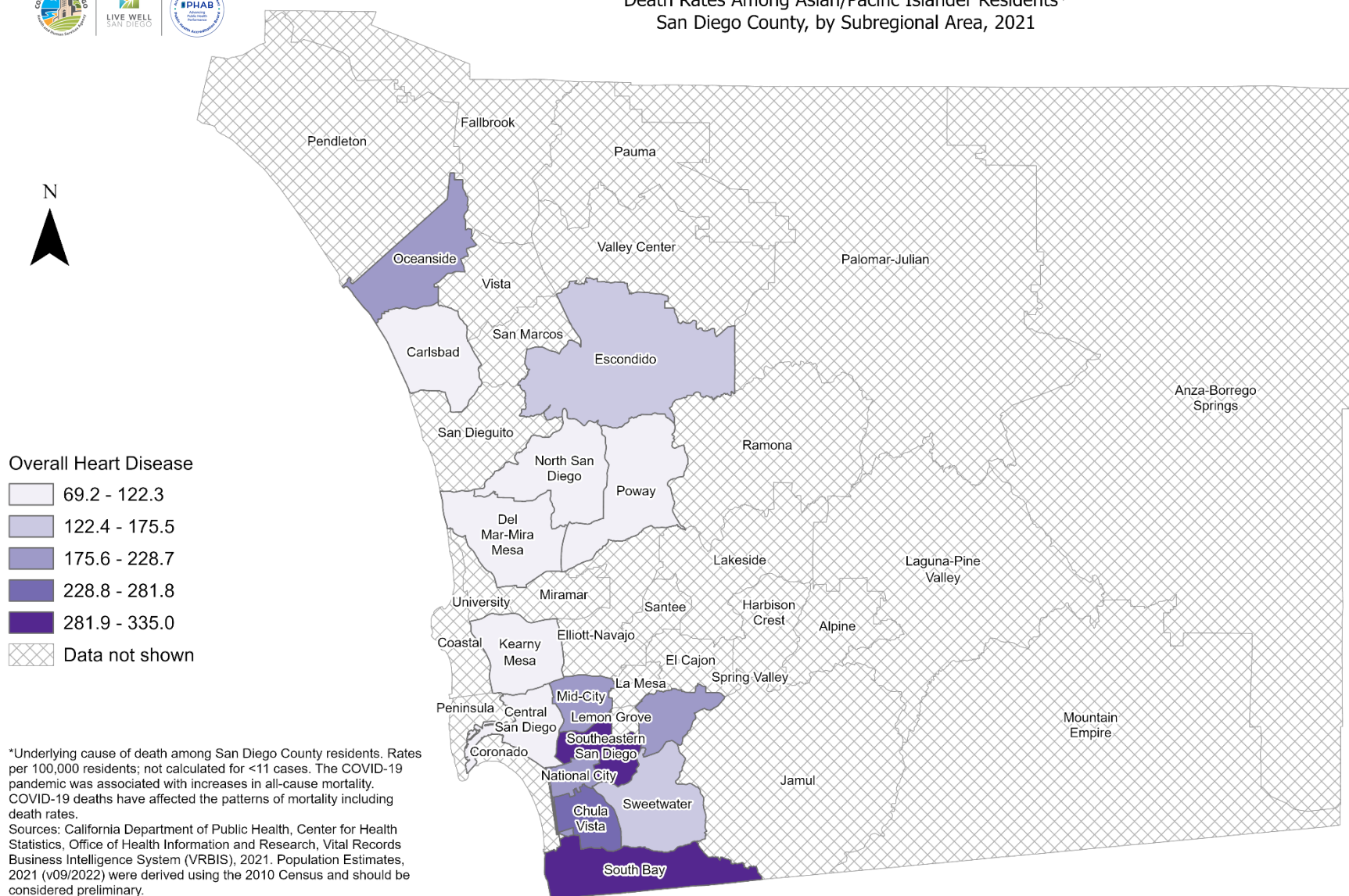
\*Underlying cause of death among San Diego County residents. Rates per 100,000 residents; not calculated for <11 cases. The COVID-19 pandemic was associated with increases in all-cause mortality. COVID-19 deaths have affected the patterns of mortality including death rates.  
Sources: California Department of Public Health, Center for Health Statistics, Office of Health Information and Research, Vital Records Business Intelligence System (VRBIS), 2021. Population Estimates, 2021 (v09/2022) were derived using the 2010 Census and should be considered preliminary.

Maps & Analysis by County of San Diego, Health and Human Services Agency, Public Health Services, Community Health Statistics Unit.  
Contact 619.692.6672.  
[https://www.sandiegocounty.gov/hhsa/programs/phs/community\\_health\\_statistics/](https://www.sandiegocounty.gov/hhsa/programs/phs/community_health_statistics/).  
August, 2023.  
[LiveWellSD.org](http://LiveWellSD.org).





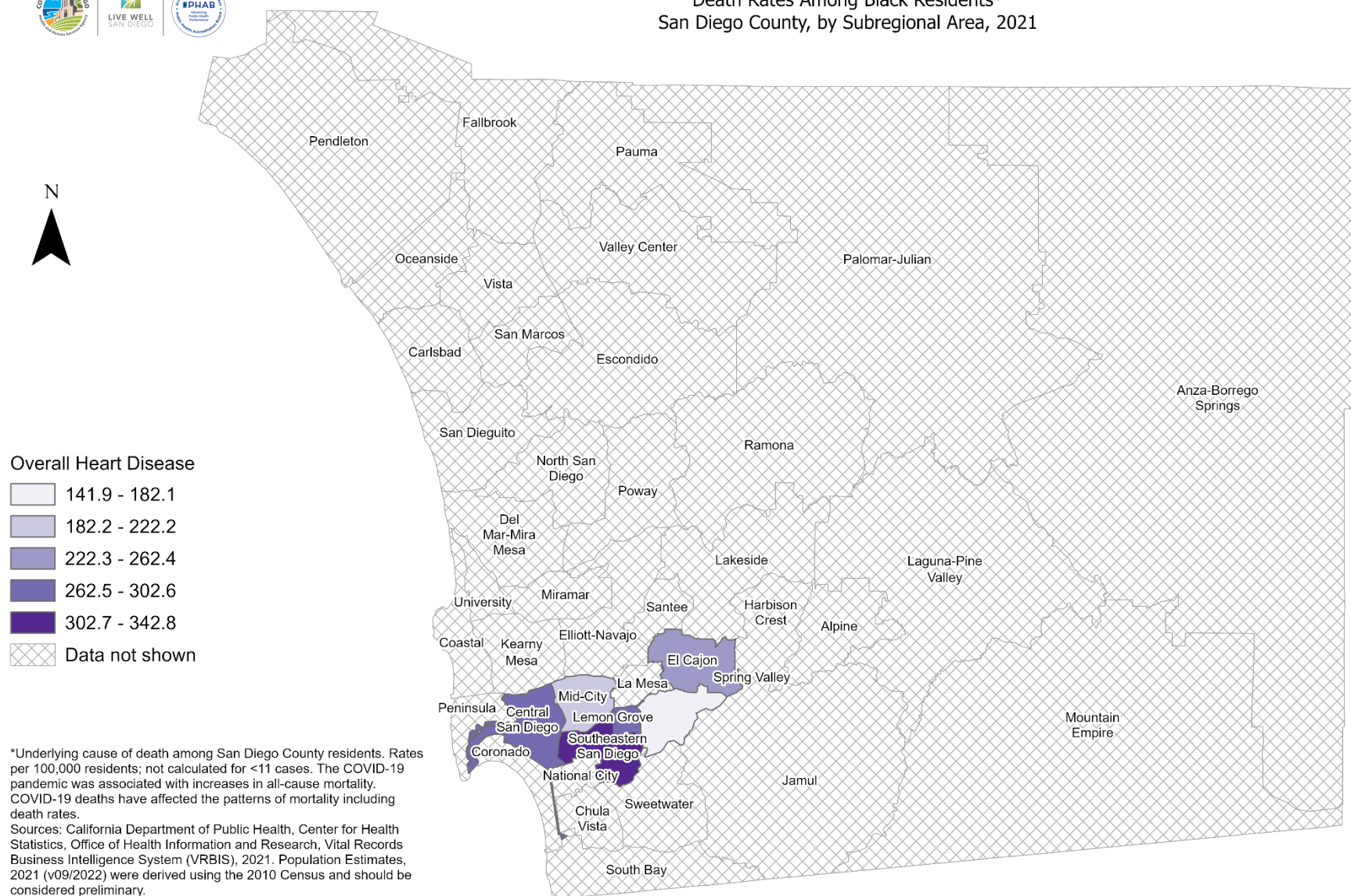
## Death Rates Among Asian/Pacific Islander Residents\* San Diego County, by Subregional Area, 2021



SanGIS is a registered trademark of the County of San Diego. All other trademarks are the property of their respective owners. SanGIS is a service mark of the County of San Diego. All other trademarks are the property of their respective owners.



## Death Rates Among Black Residents\* San Diego County, by Subregional Area, 2021



\*Underlying cause of death among San Diego County residents. Rates per 100,000 residents; not calculated for <11 cases. The COVID-19 pandemic was associated with increases in all-cause mortality. COVID-19 deaths have affected the patterns of mortality including death rates.  
Sources: California Department of Public Health, Center for Health Statistics, Office of Health Information and Research, Vital Records Business Intelligence System (VRBIS), 2021. Population Estimates, 2021 (v09/2022) were derived using the 2010 Census and should be considered preliminary.

Maps & Analysis by County of San Diego, Health and Human Services Agency, Public Health Services, Community Health Statistics Unit.  
Contact 619.692.6672.  
[https://www.sandiegocounty.gov/hhsa/programs/phs/community\\_health\\_statistics/](https://www.sandiegocounty.gov/hhsa/programs/phs/community_health_statistics/).  
August, 2023.  
[LiveWellSD.org](http://LiveWellSD.org).

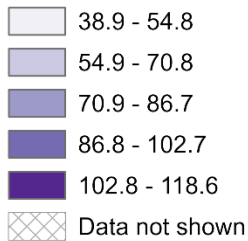




## Death Rates Among Hispanic Residents\* San Diego County, by Subregional Area, 2021

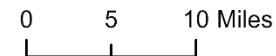


### Overall Heart Disease



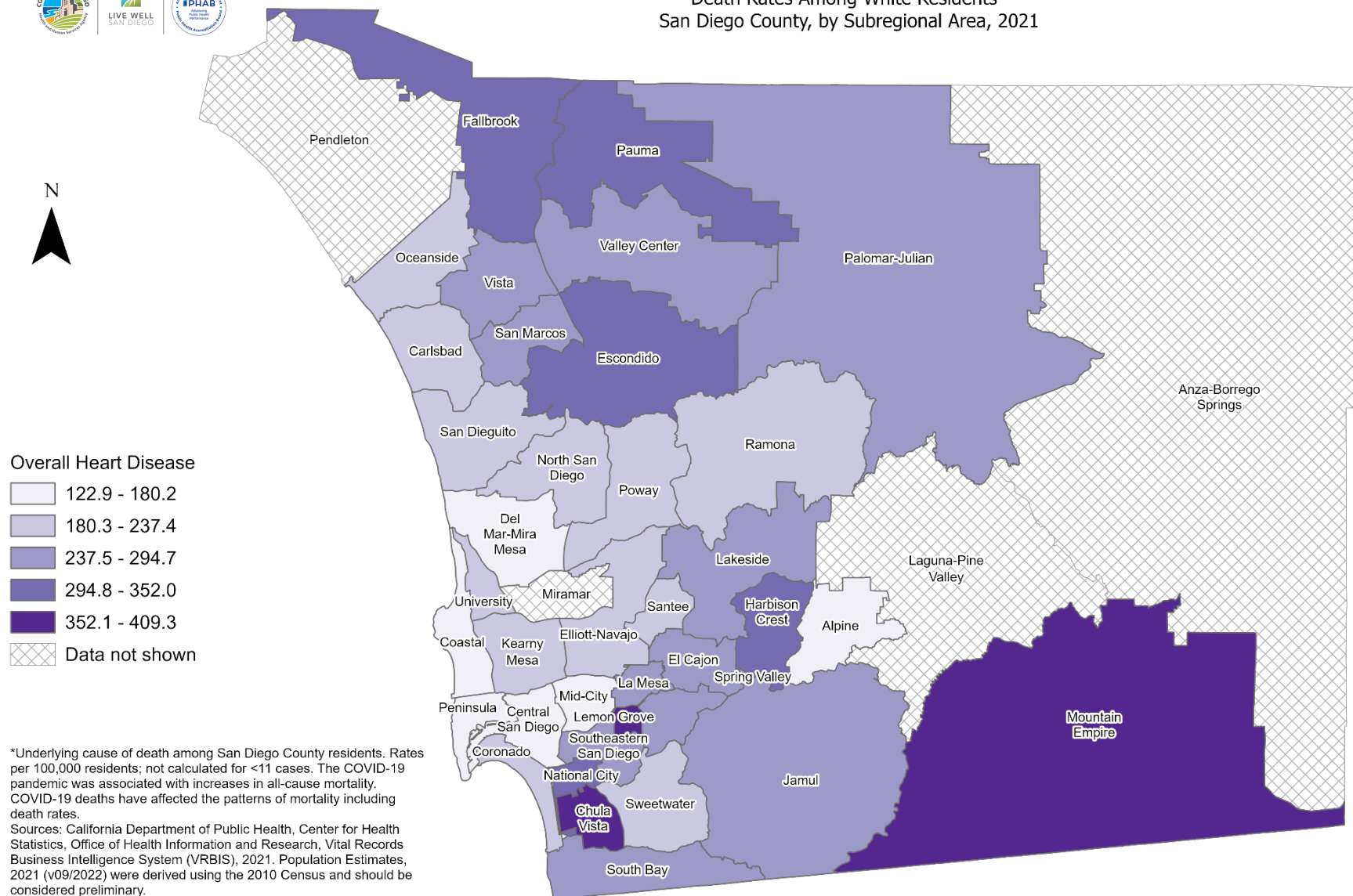
\*Underlying cause of death among San Diego County residents. Rates per 100,000 residents; not calculated for <11 cases. The COVID-19 pandemic was associated with increases in all-cause mortality. COVID-19 deaths have affected the patterns of mortality including death rates.  
Sources: California Department of Public Health, Center for Health Statistics, Office of Health Information and Research, Vital Records Business Intelligence System (VRBIS), 2021. Population Estimates, 2021 (v09/2022) were derived using the 2010 Census and should be considered preliminary.

Maps & Analysis by County of San Diego, Health and Human Services Agency, Public Health Services, Community Health Statistics Unit.  
Contact 619.692.6672.  
[https://www.sandiegocounty.gov/hhsa/programs/phs/community\\_health\\_statistics/](https://www.sandiegocounty.gov/hhsa/programs/phs/community_health_statistics/)  
August, 2023.  
[LiveWellSD.org](http://LiveWellSD.org).





## Death Rates Among White Residents\* San Diego County, by Subregional Area, 2021



\*Underlying cause of death among San Diego County residents. Rates per 100,000 residents; not calculated for <11 cases. The COVID-19 pandemic was associated with increases in all-cause mortality. COVID-19 deaths have affected the patterns of mortality including death rates.  
Sources: California Department of Public Health, Center for Health Statistics, Office of Health Information and Research, Vital Records Business Intelligence System (VRBIS), 2021. Population Estimates, 2021 (v09/2022) were derived using the 2010 Census and should be considered preliminary.

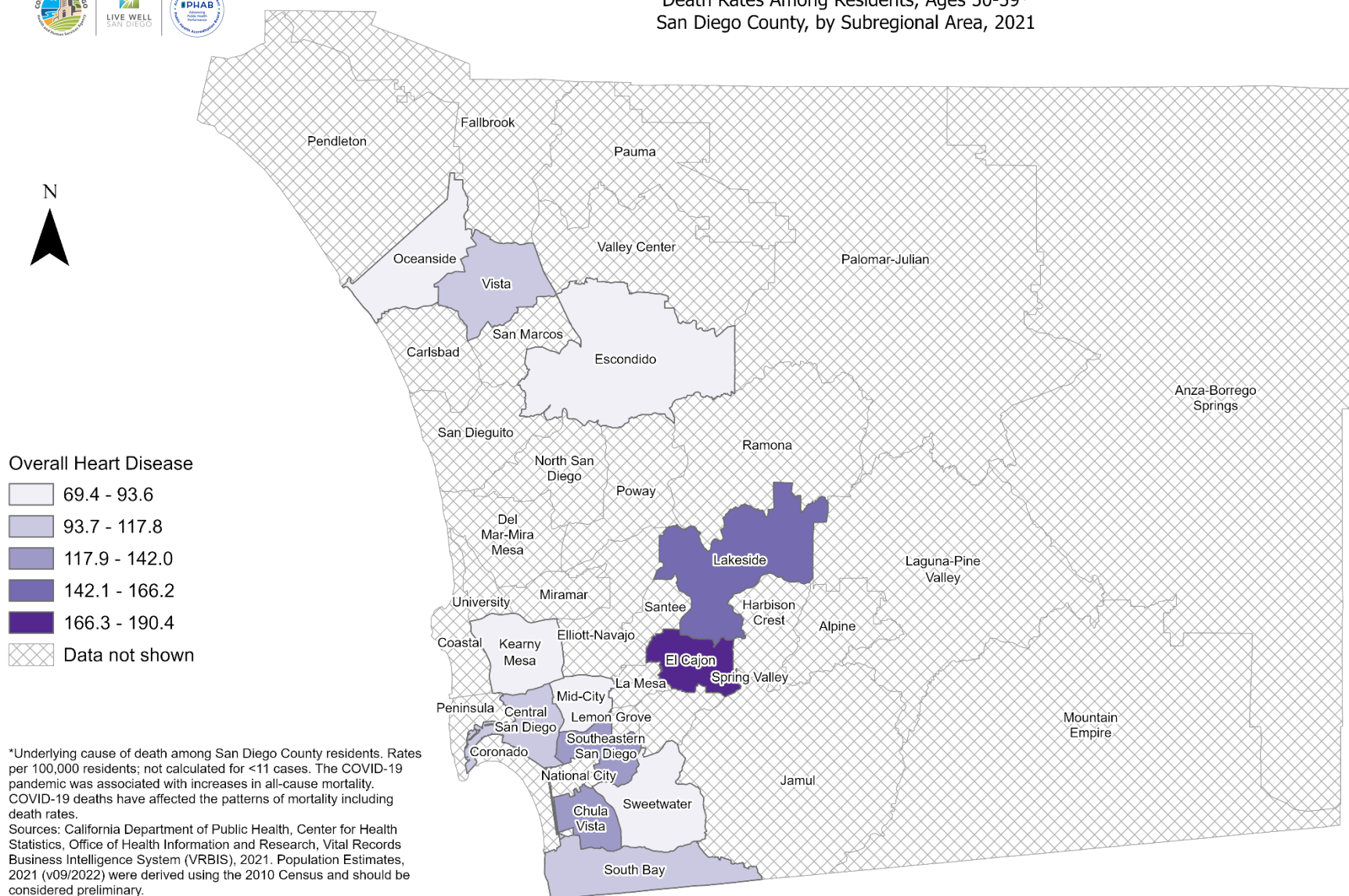
Maps & Analysis by County of San Diego, Health and Human Services Agency, Public Health Services, Community Health Statistics Unit.  
Contact 619.692.6672.  
[https://www.sandiegocounty.gov/hhsa/programs/phs/community\\_health\\_statistics/](https://www.sandiegocounty.gov/hhsa/programs/phs/community_health_statistics/).  
August, 2023.  
[LiveWellSD.org](http://LiveWellSD.org).

0 5 10 Miles





## Death Rates Among Residents, Ages 50-59\* San Diego County, by Subregional Area, 2021



Maps & Analysis by County of San Diego, Health and Human Services Agency, Public Health Services, Community Health Statistics Unit.  
Contact 619.692.6672.

[https://www.sandiegocounty.gov/hhsa/programs/phs/community\\_health\\_statistics/](https://www.sandiegocounty.gov/hhsa/programs/phs/community_health_statistics/)

August, 2023.

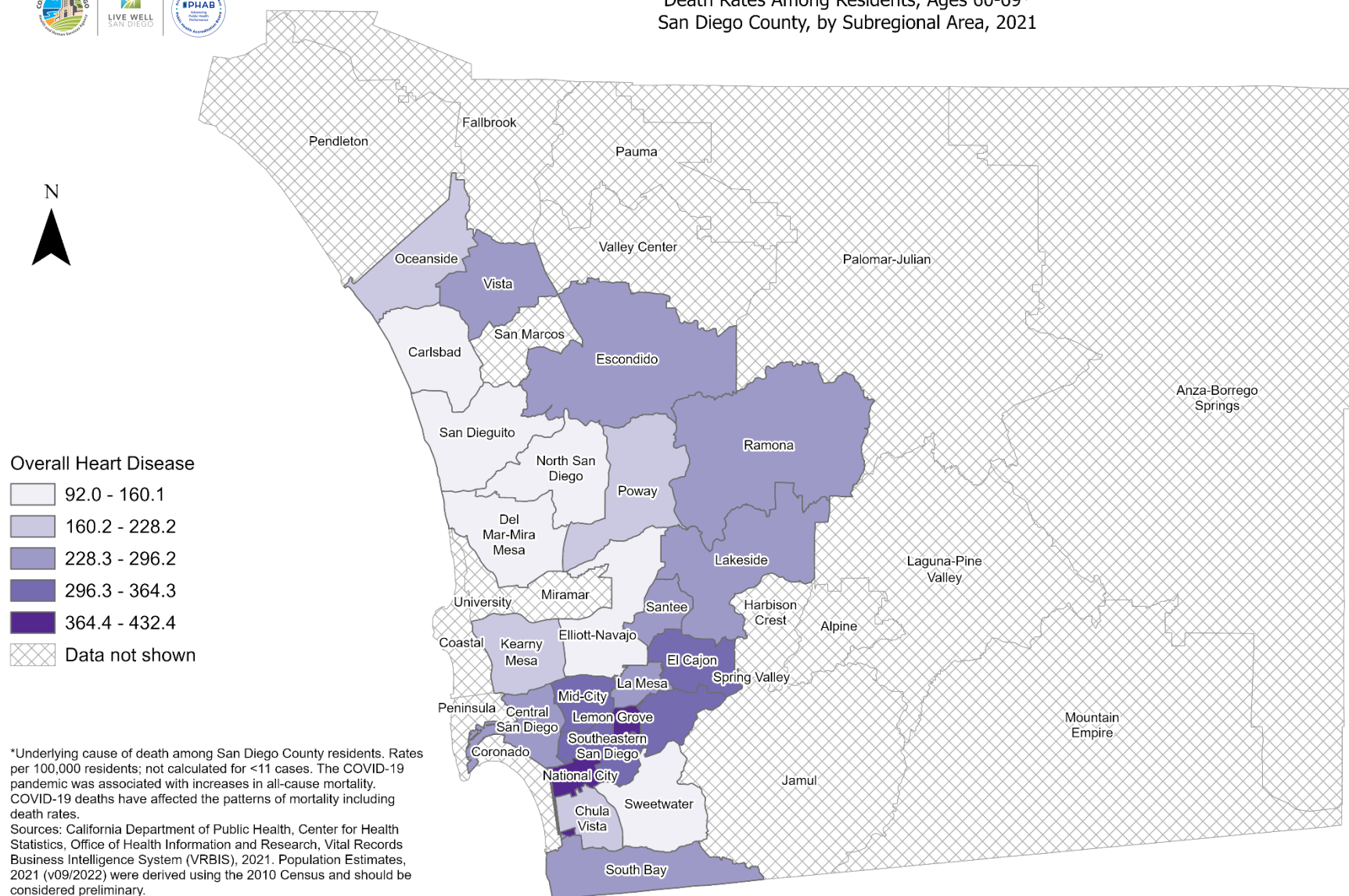
LiveWellSD.org.



SanGIS is a registered trademark of the County of San Diego. All other trademarks are the property of their respective owners. SanGIS is a service mark of the County of San Diego. All other trademarks are the property of their respective owners.



## Death Rates Among Residents, Ages 60-69\* San Diego County, by Subregional Area, 2021



\*Underlying cause of death among San Diego County residents. Rates per 100,000 residents; not calculated for <11 cases. The COVID-19 pandemic was associated with increases in all-cause mortality. COVID-19 deaths have affected the patterns of mortality including death rates.  
Sources: California Department of Public Health, Center for Health Statistics, Office of Health Information and Research, Vital Records Business Intelligence System (VRBIS), 2021. Population Estimates, 2021 (v09/2022) were derived using the 2010 Census and should be considered preliminary.

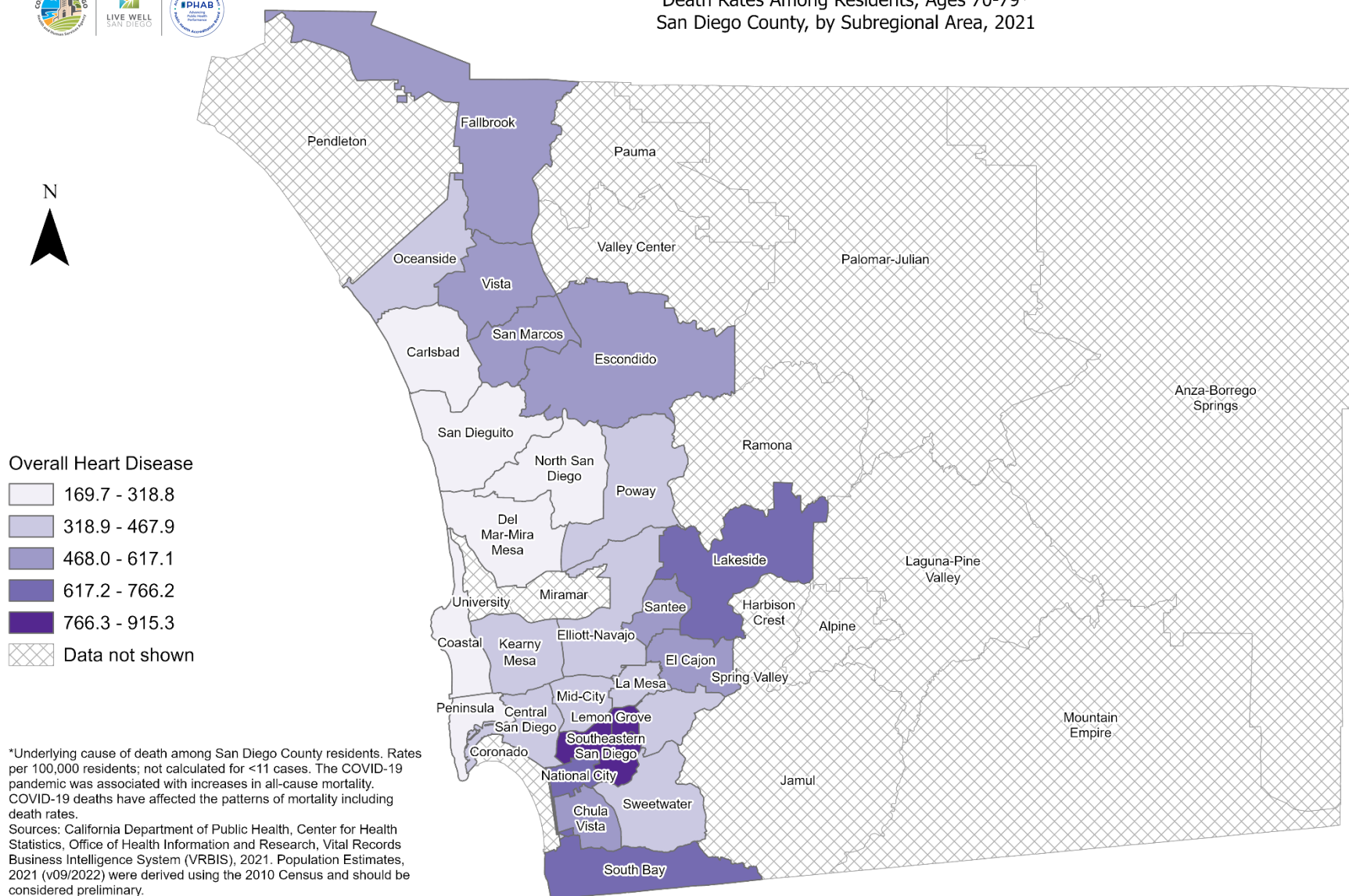
Maps & Analysis by County of San Diego, Health and Human Services Agency, Public Health Services, Community Health Statistics Unit.  
Contact 619.692.6672.  
[https://www.sandiegocounty.gov/hhsa/programs/phs/community\\_health\\_statistics/](https://www.sandiegocounty.gov/hhsa/programs/phs/community_health_statistics/).  
August, 2023.  
[LiveWellSD.org](http://LiveWellSD.org).

0 5 10 Miles





## Death Rates Among Residents, Ages 70-79\* San Diego County, by Subregional Area, 2021



\*Underlying cause of death among San Diego County residents. Rates per 100,000 residents; not calculated for <11 cases. The COVID-19 pandemic was associated with increases in all-cause mortality. COVID-19 deaths have affected the patterns of mortality including death rates.  
Sources: California Department of Public Health, Center for Health Statistics, Office of Health Information and Research, Vital Records Business Intelligence System (VRBIS), 2021. Population Estimates, 2021 (v09/2022) were derived using the 2010 Census and should be considered preliminary.

Maps & Analysis by County of San Diego, Health and Human Services Agency, Public Health Services, Community Health Statistics Unit.  
Contact 619.692.6672.  
[https://www.sandiegocounty.gov/hhsa/programs/phs/community\\_health\\_statistics/](https://www.sandiegocounty.gov/hhsa/programs/phs/community_health_statistics/).  
August, 2023.  
[LiveWellSD.org](http://LiveWellSD.org).

0 5 10 Miles

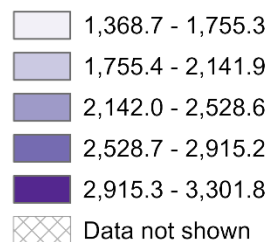




## Death Rates Among Residents, Ages 80+\* San Diego County, by Subregional Area, 2021



### Overall Heart Disease



\*Underlying cause of death among San Diego County residents. Rates per 100,000 residents; not calculated for <11 cases. The COVID-19 pandemic was associated with increases in all-cause mortality. COVID-19 deaths have affected the patterns of mortality including death rates.

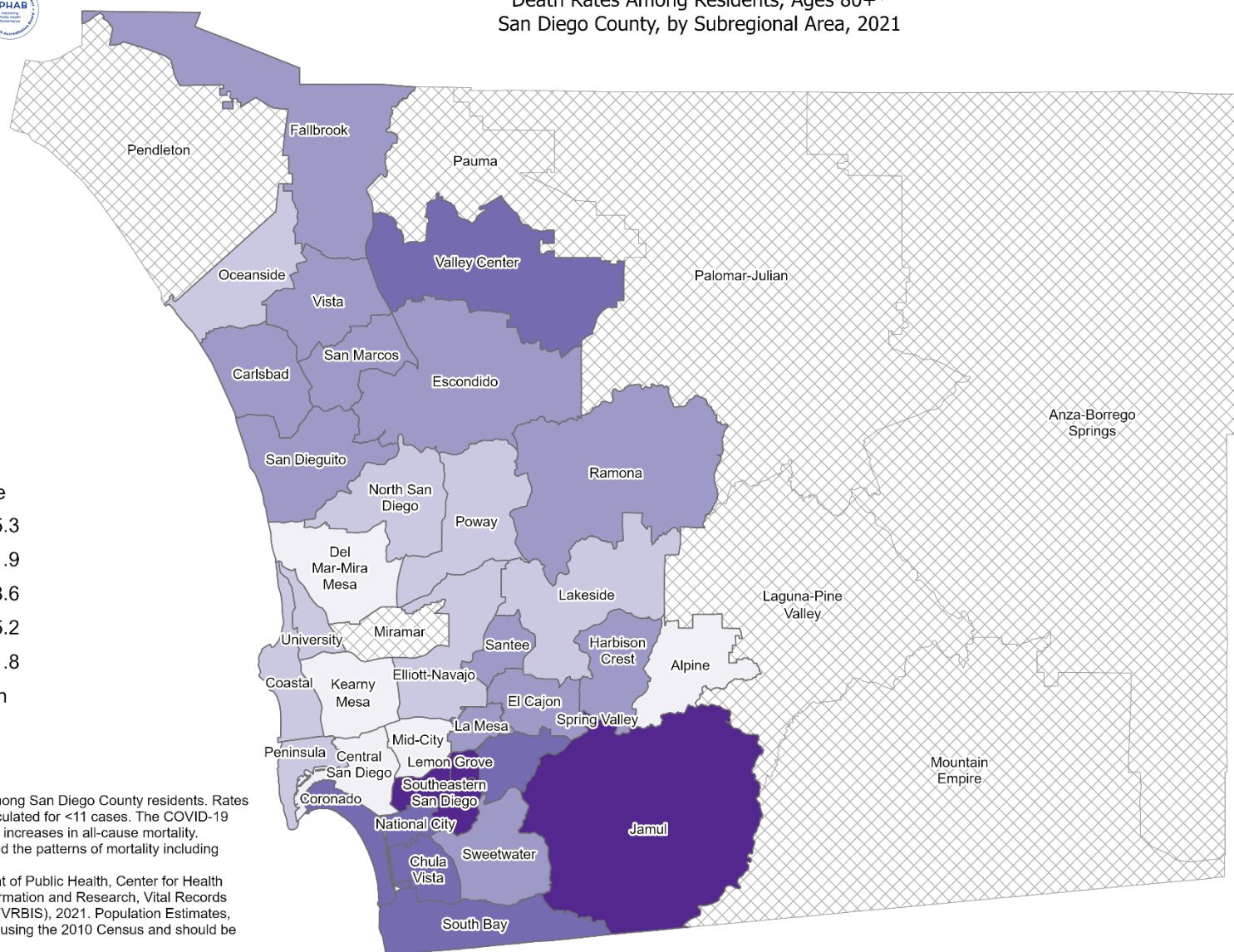
Sources: California Department of Public Health, Center for Health Statistics, Office of Health Information and Research, Vital Records Business Intelligence System (VRBIS), 2021. Population Estimates, 2021 (v09/2022) were derived using the 2010 Census and should be considered preliminary.

Maps & Analysis by County of San Diego, Health and Human Services Agency, Public Health Services, Community Health Statistics Unit. Contact 619.692.6672.

[https://www.sandiegocounty.gov/hhsa/programs/phs/community\\_health\\_statistics/](https://www.sandiegocounty.gov/hhsa/programs/phs/community_health_statistics/)

August, 2023.

LiveWellSD.org.



0 5 10 Miles



# SECTION 2

## Hospitalization Rates Among San Diego County Residents by Demographics, 2021:

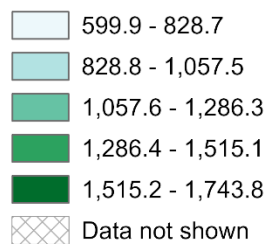
- Total Rate
  - Race/Ethnicity
    - Asian/Pacific Islander (API)
    - Black
    - Hispanic
    - White
  - Age Group
    - 0-9 Years
    - 10-19 Years
    - 20-29 Years
    - 30-39 Years
    - 40-49 Years
    - 50-59 Years
    - 60-69 Years
    - 70-79 Years
    - 80+ Years



# Total Hospitalization Rates\* San Diego County, by Subregional Area, 2021

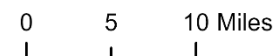
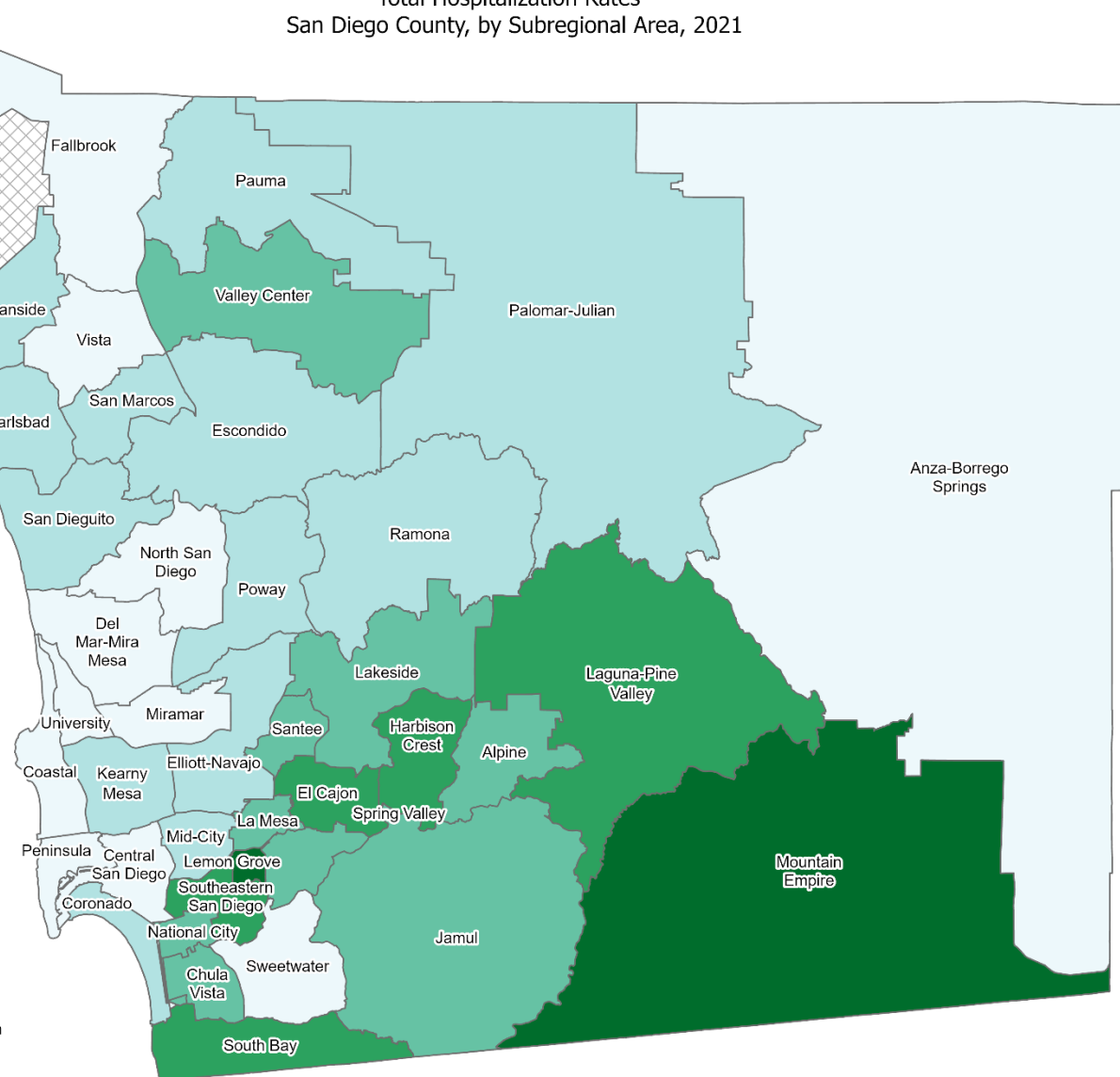


## Overall Heart Disease



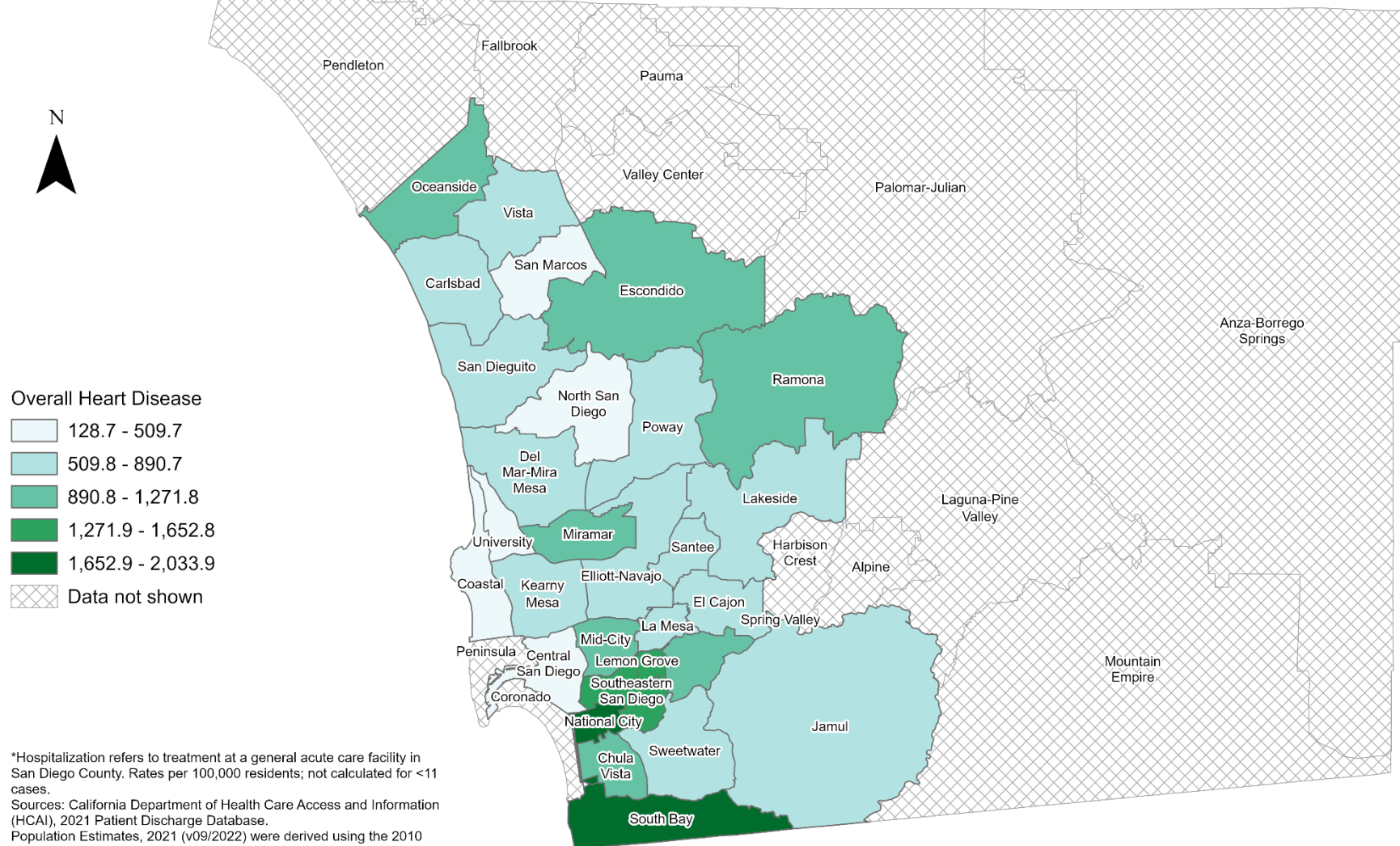
\*Hospitalization refers to treatment at a general acute care facility in San Diego County. Rates per 100,000 residents; not calculated for <11 cases.  
Sources: California Department of Health Care Access and Information (HCAI), 2021 Patient Discharge Database.  
Population Estimates, 2021 (v09/2022) were derived using the 2010 Census and should be considered preliminary.

Maps & Analysis by County of San Diego, Health and Human Services Agency, Public Health Services, Community Health Statistics Unit.  
Contact 619.692.6672. [https://www.sandiegocounty.gov/hhsa/programs/phs/community\\_health\\_statistics/](https://www.sandiegocounty.gov/hhsa/programs/phs/community_health_statistics/).  
August, 2023.  
LiveWellSD.org.





# Hospitalization Rates Among Asian/Pacific Islander Residents\* San Diego County, by Subregional Area, 2021



\*Hospitalization refers to treatment at a general acute care facility in San Diego County. Rates per 100,000 residents; not calculated for <11 cases.  
Sources: California Department of Health Care Access and Information (HCAI), 2021 Patient Discharge Database.  
Population Estimates, 2021 (v09/2022) were derived using the 2010 Census and should be considered preliminary.

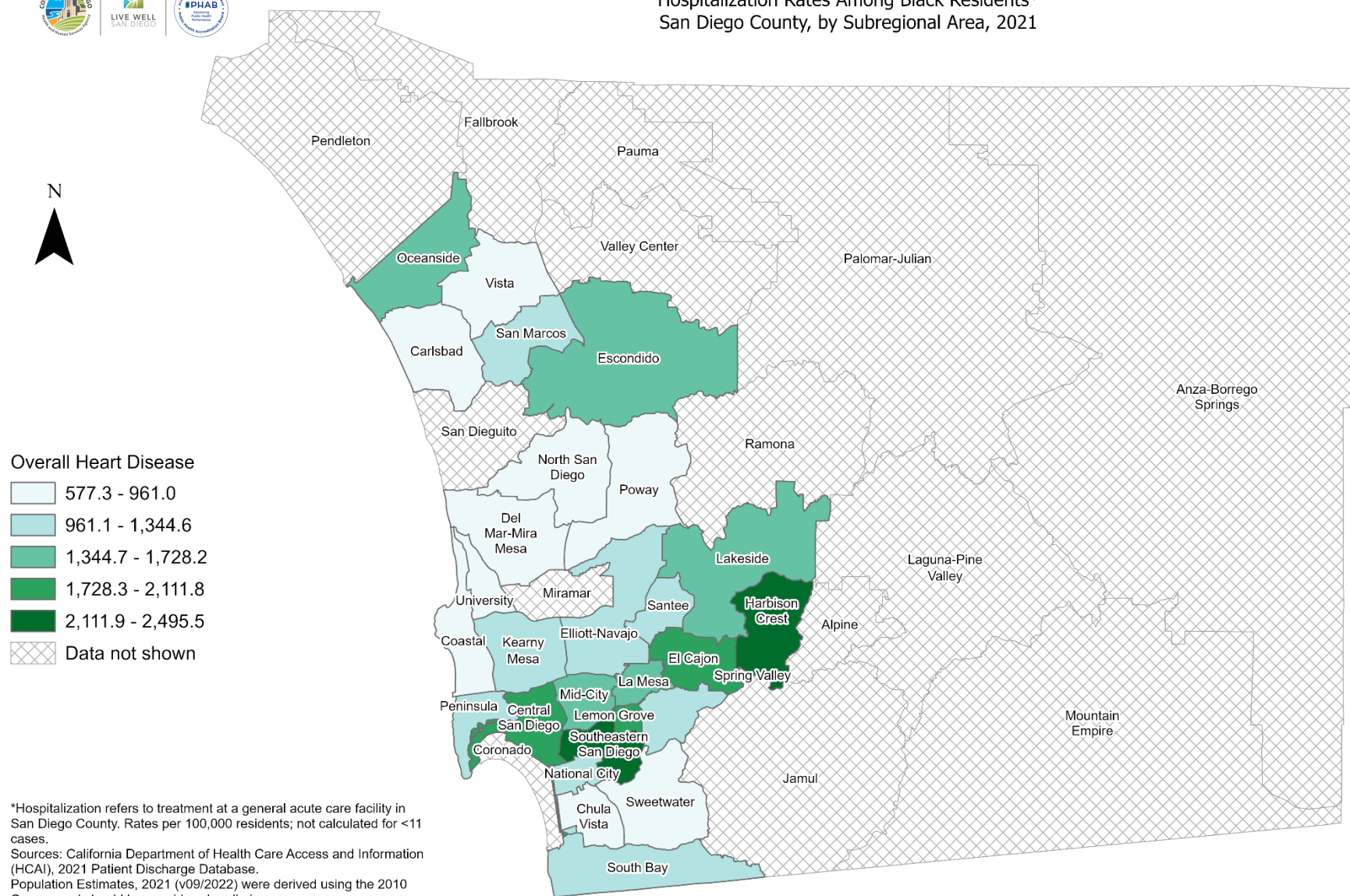
Maps & Analysis by County of San Diego, Health and Human Services Agency, Public Health Services, Community Health Statistics Unit.  
Contact 619.692.6672. [https://www.sandiegocounty.gov/hhsa/programs/phs/community\\_health\\_statistics/](https://www.sandiegocounty.gov/hhsa/programs/phs/community_health_statistics/).  
August, 2023.  
LiveWellSD.org.

0 5 10 Miles





## Hospitalization Rates Among Black Residents\* San Diego County, by Subregional Area, 2021



\*Hospitalization refers to treatment at a general acute care facility in San Diego County. Rates per 100,000 residents; not calculated for <11 cases.  
Sources: California Department of Health Care Access and Information (HCAI), 2021 Patient Discharge Database.  
Population Estimates, 2021 (v09/2022) were derived using the 2010 Census and should be considered preliminary.

Maps & Analysis by County of San Diego, Health and Human Services Agency, Public Health Services, Community Health Statistics Unit.  
Contact 619.692.6672. [https://www.sandiegocounty.gov/hhsa/programs/phs/community\\_health\\_statistics/](https://www.sandiegocounty.gov/hhsa/programs/phs/community_health_statistics/).  
August, 2023.  
LiveWellSD.org.

0 5 10 Miles

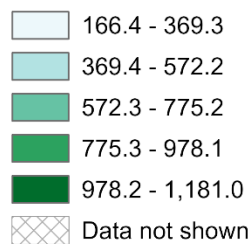




# Hospitalization Rates Among Hispanic Residents\* San Diego County, by Subregional Area, 2021

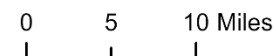


## Overall Heart Disease



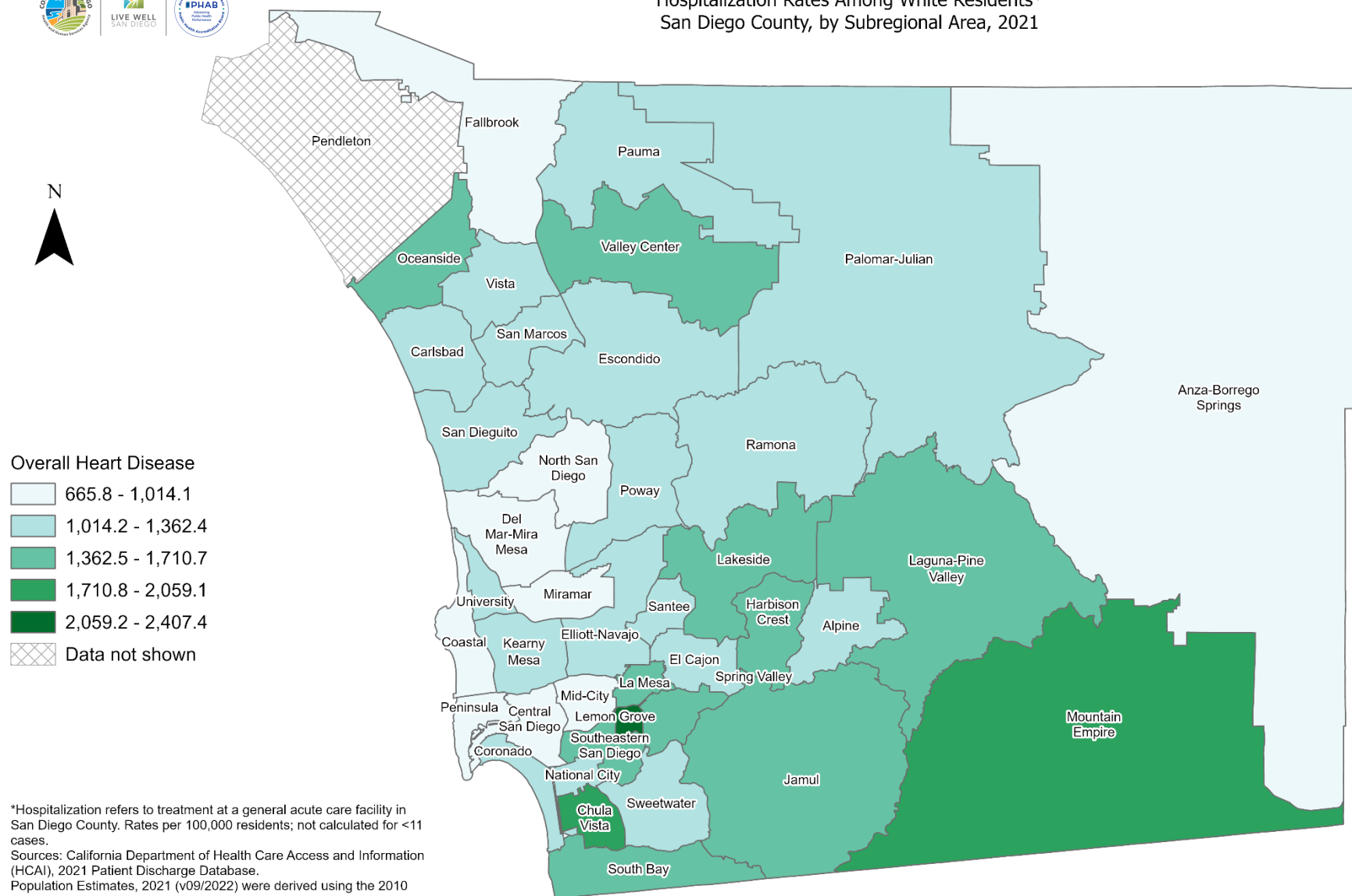
\*Hospitalization refers to treatment at a general acute care facility in San Diego County. Rates per 100,000 residents; not calculated for <11 cases.  
Sources: California Department of Health Care Access and Information (HCAI), 2021 Patient Discharge Database.  
Population Estimates, 2021 (v09/2022) were derived using the 2010 Census and should be considered preliminary.

Maps & Analysis by County of San Diego, Health and Human Services Agency, Public Health Services, Community Health Statistics Unit.  
Contact 619.692.6672. [https://www.sandiegocounty.gov/hhsa/programs/phs/community\\_health\\_statistics/](https://www.sandiegocounty.gov/hhsa/programs/phs/community_health_statistics/).  
August, 2023.  
LiveWellSD.org.





## Hospitalization Rates Among White Residents\* San Diego County, by Subregional Area, 2021



\*Hospitalization refers to treatment at a general acute care facility in San Diego County. Rates per 100,000 residents; not calculated for <11 cases.  
Sources: California Department of Health Care Access and Information (HCAI), 2021 Patient Discharge Database.  
Population Estimates, 2021 (v09/2022) were derived using the 2010 Census and should be considered preliminary.

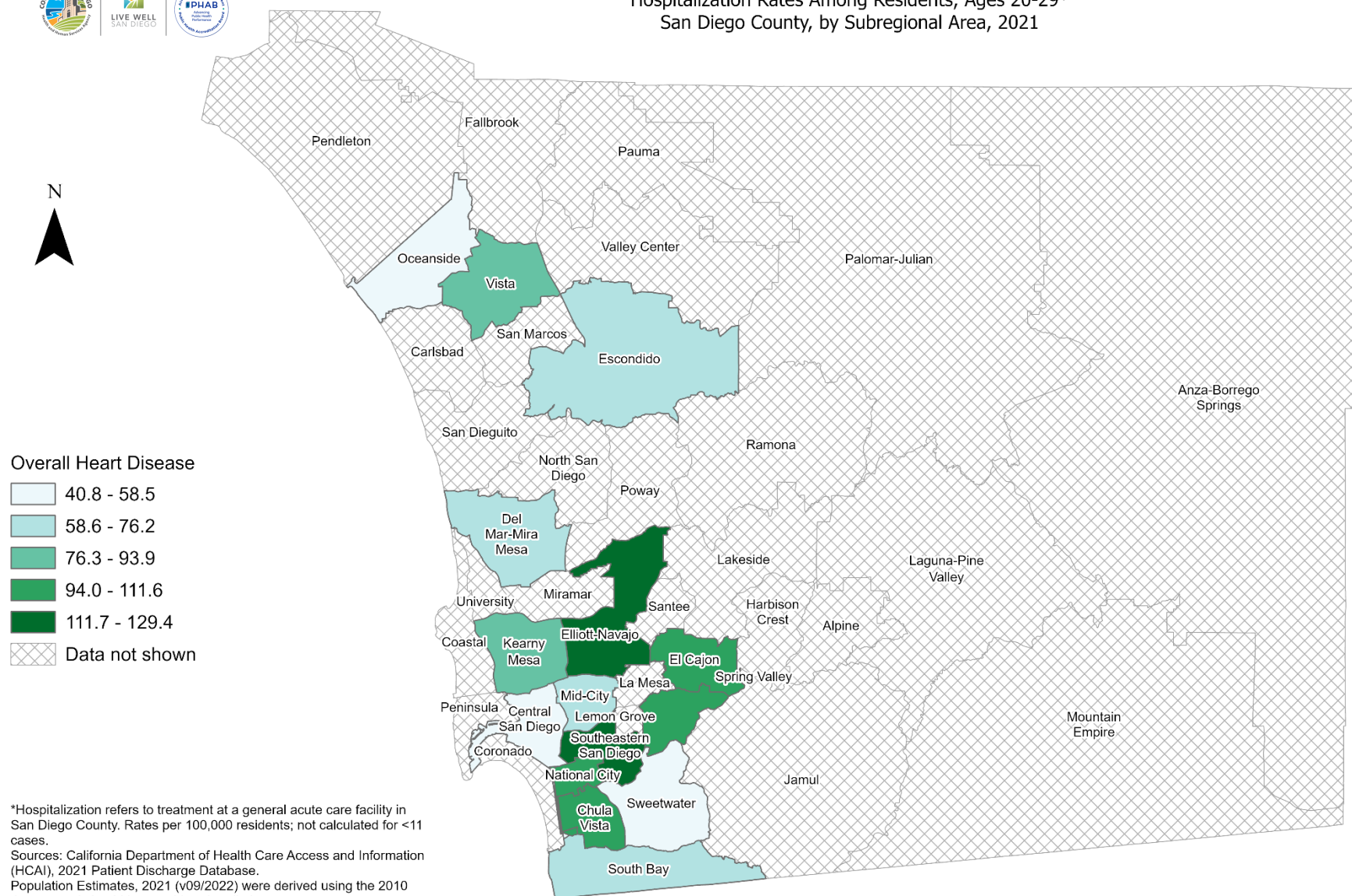
Maps & Analysis by County of San Diego, Health and Human Services Agency, Public Health Services, Community Health Statistics Unit.  
Contact 619.692.6672. [https://www.sandiegocounty.gov/hhsa/programs/phs/community\\_health\\_statistics/](https://www.sandiegocounty.gov/hhsa/programs/phs/community_health_statistics/).  
August, 2023.  
LiveWellSD.org.

0 5 10 Miles





# Hospitalization Rates Among Residents, Ages 20-29\* San Diego County, by Subregional Area, 2021



\*Hospitalization refers to treatment at a general acute care facility in San Diego County. Rates per 100,000 residents; not calculated for <11 cases.  
Sources: California Department of Health Care Access and Information (HCAI), 2021 Patient Discharge Database.  
Population Estimates, 2021 (v09/2022) were derived using the 2010 Census and should be considered preliminary.

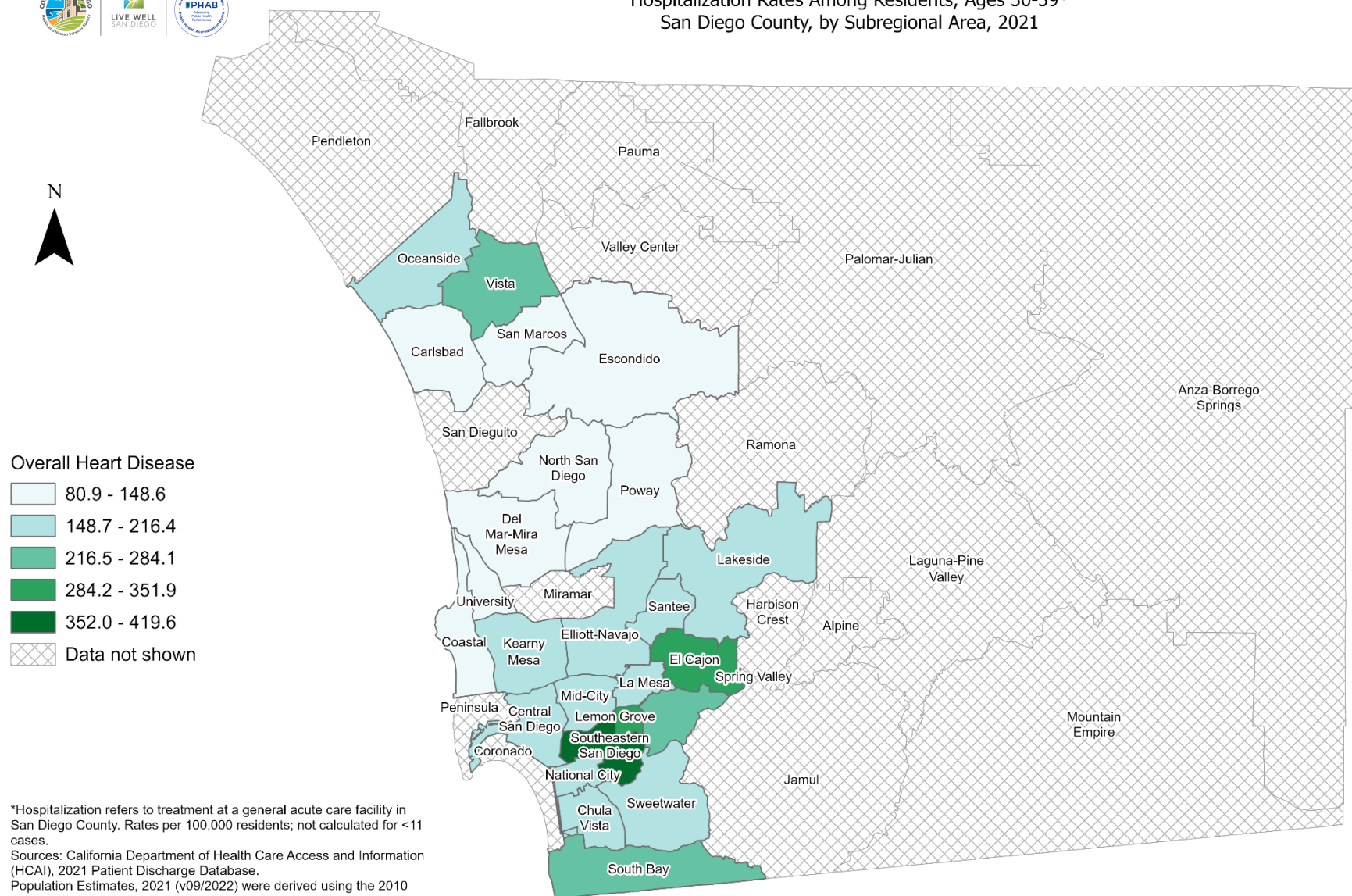
Maps & Analysis by County of San Diego, Health and Human Services Agency, Public Health Services, Community Health Statistics Unit.  
Contact 619.692.6672. [https://www.sandiegocounty.gov/hhsa/programs/phs/community\\_health\\_statistics/](https://www.sandiegocounty.gov/hhsa/programs/phs/community_health_statistics/).  
August, 2023.  
LiveWellSD.org.

0 5 10 Miles





# Hospitalization Rates Among Residents, Ages 30-39\* San Diego County, by Subregional Area, 2021



\*Hospitalization refers to treatment at a general acute care facility in San Diego County. Rates per 100,000 residents; not calculated for <11 cases.  
Sources: California Department of Health Care Access and Information (HCAI), 2021 Patient Discharge Database.  
Population Estimates, 2021 (v09/2022) were derived using the 2010 Census and should be considered preliminary.

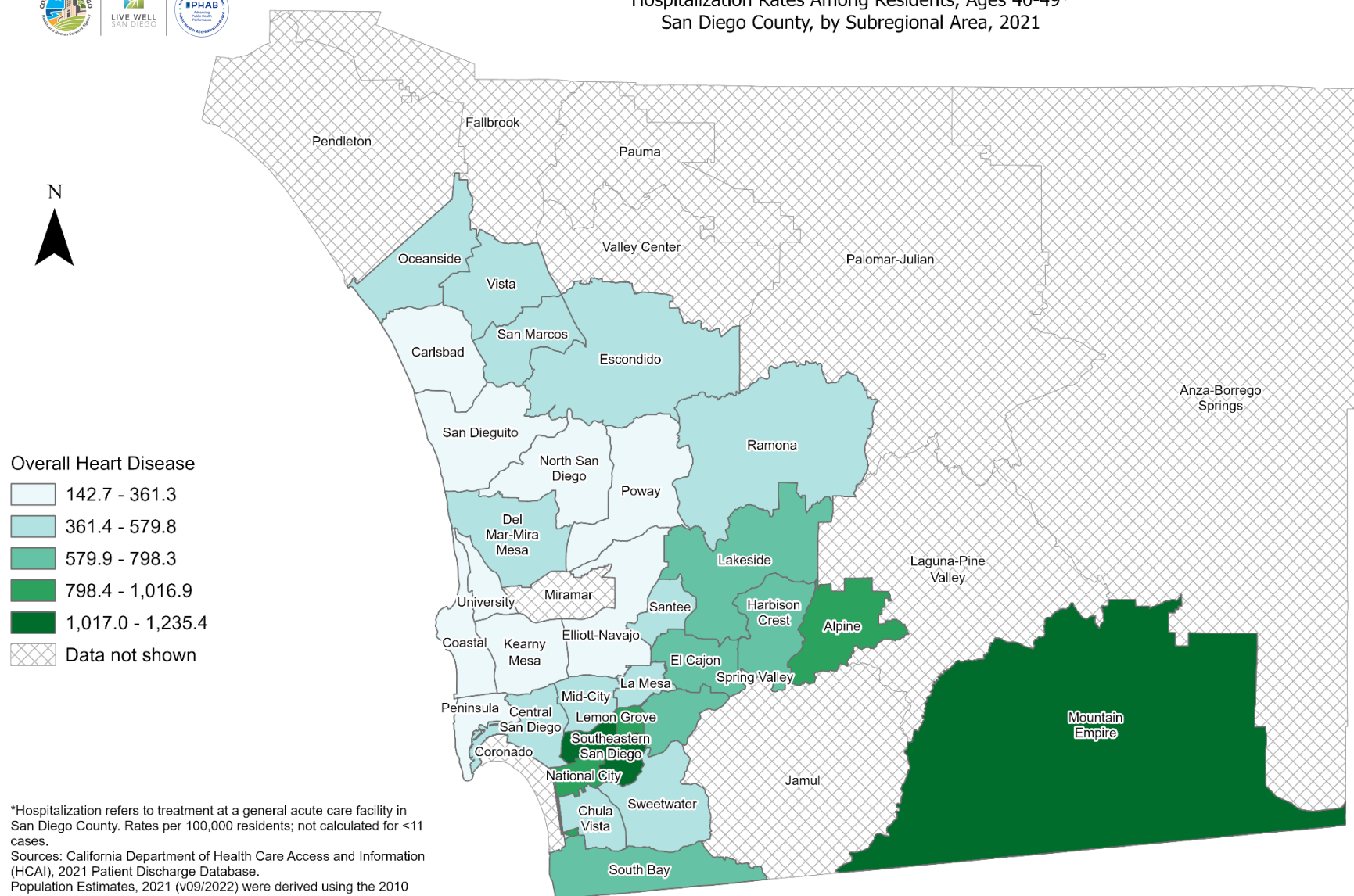
Maps & Analysis by County of San Diego, Health and Human Services Agency, Public Health Services, Community Health Statistics Unit.  
Contact 619.692.6672. [https://www.sandiegocounty.gov/hhsa/programs/phs/community\\_health\\_statistics/](https://www.sandiegocounty.gov/hhsa/programs/phs/community_health_statistics/).  
August, 2023.  
LiveWellSD.org.

0 5 10 Miles





# Hospitalization Rates Among Residents, Ages 40-49\* San Diego County, by Subregional Area, 2021



\*Hospitalization refers to treatment at a general acute care facility in San Diego County. Rates per 100,000 residents; not calculated for <11 cases.  
Sources: California Department of Health Care Access and Information (HCAI), 2021 Patient Discharge Database.  
Population Estimates, 2021 (v09/2022) were derived using the 2010 Census and should be considered preliminary.

Maps & Analysis by County of San Diego, Health and Human Services Agency, Public Health Services, Community Health Statistics Unit.  
Contact 619.692.6672. [https://www.sandiegocounty.gov/hhsa/programs/phs/community\\_health\\_statistics/](https://www.sandiegocounty.gov/hhsa/programs/phs/community_health_statistics/).  
August, 2023.  
LiveWellSD.org.

0 5 10 Miles

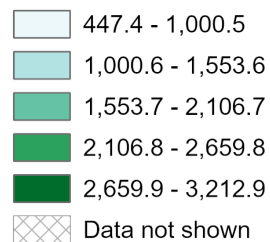




# Hospitalization Rates Among Residents, Ages 50-59\* San Diego County, by Subregional Area, 2021



## Overall Heart Disease



\*Hospitalization refers to treatment at a general acute care facility in San Diego County. Rates per 100,000 residents; not calculated for <11 cases.

Sources: California Department of Health Care Access and Information (HCAI), 2021 Patient Discharge Database.  
Population Estimates, 2021 (v09/2022) were derived using the 2010 Census and should be considered preliminary.

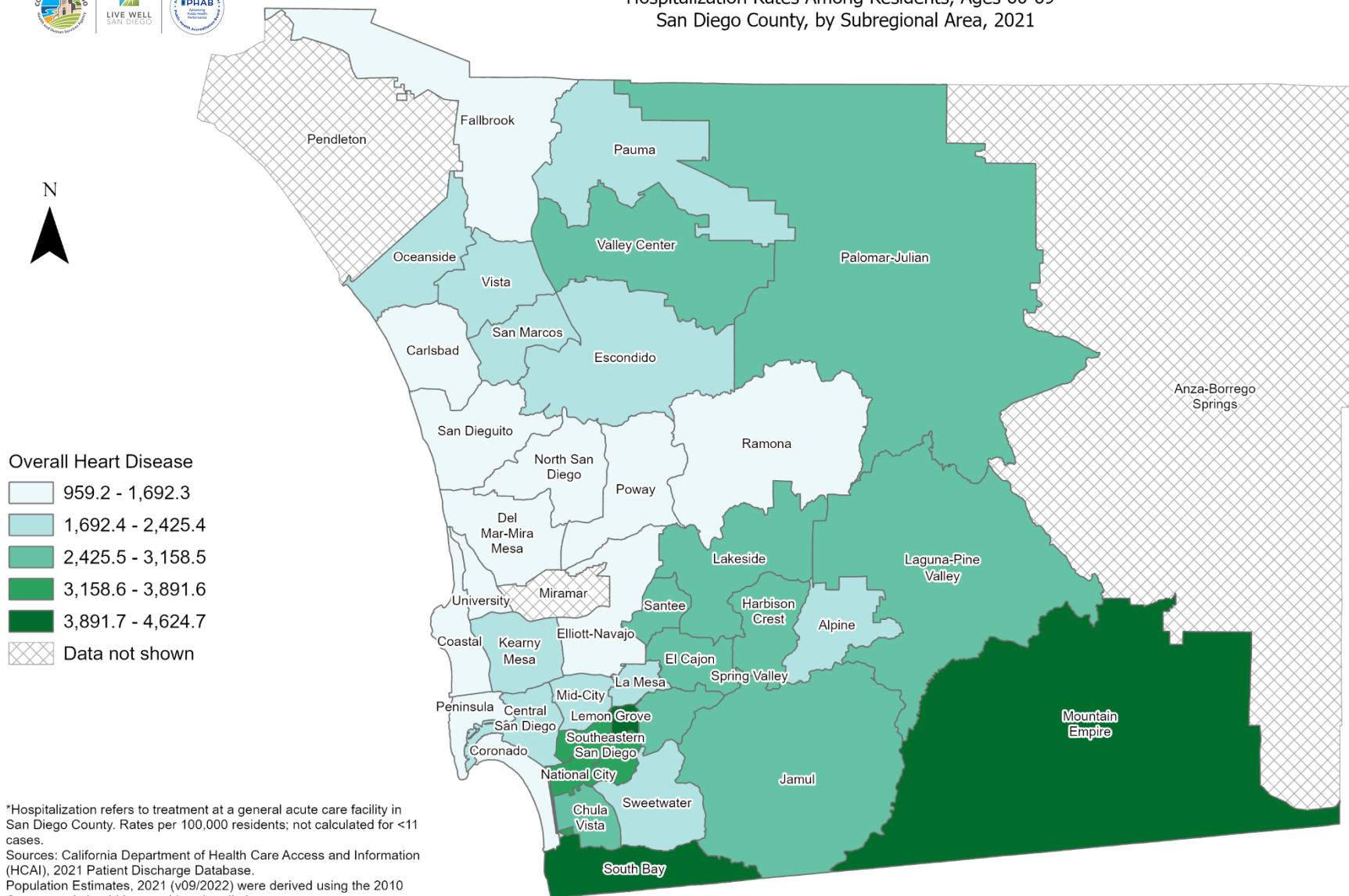
Maps & Analysis by County of San Diego, Health and Human Services Agency, Public Health Services, Community Health Statistics Unit.  
Contact 619.692.6672. [https://www.sandiegocounty.gov/hhsa/programs/phs/community\\_health\\_statistics/](https://www.sandiegocounty.gov/hhsa/programs/phs/community_health_statistics/).  
August, 2023.  
[LiveWellSD.org](http://LiveWellSD.org).

0 5 10 Miles





# Hospitalization Rates Among Residents, Ages 60-69\* San Diego County, by Subregional Area, 2021



\*Hospitalization refers to treatment at a general acute care facility in San Diego County. Rates per 100,000 residents; not calculated for <11 cases.  
Sources: California Department of Health Care Access and Information (HCAI), 2021 Patient Discharge Database.  
Population Estimates, 2021 (v09/2022) were derived using the 2010 Census and should be considered preliminary.

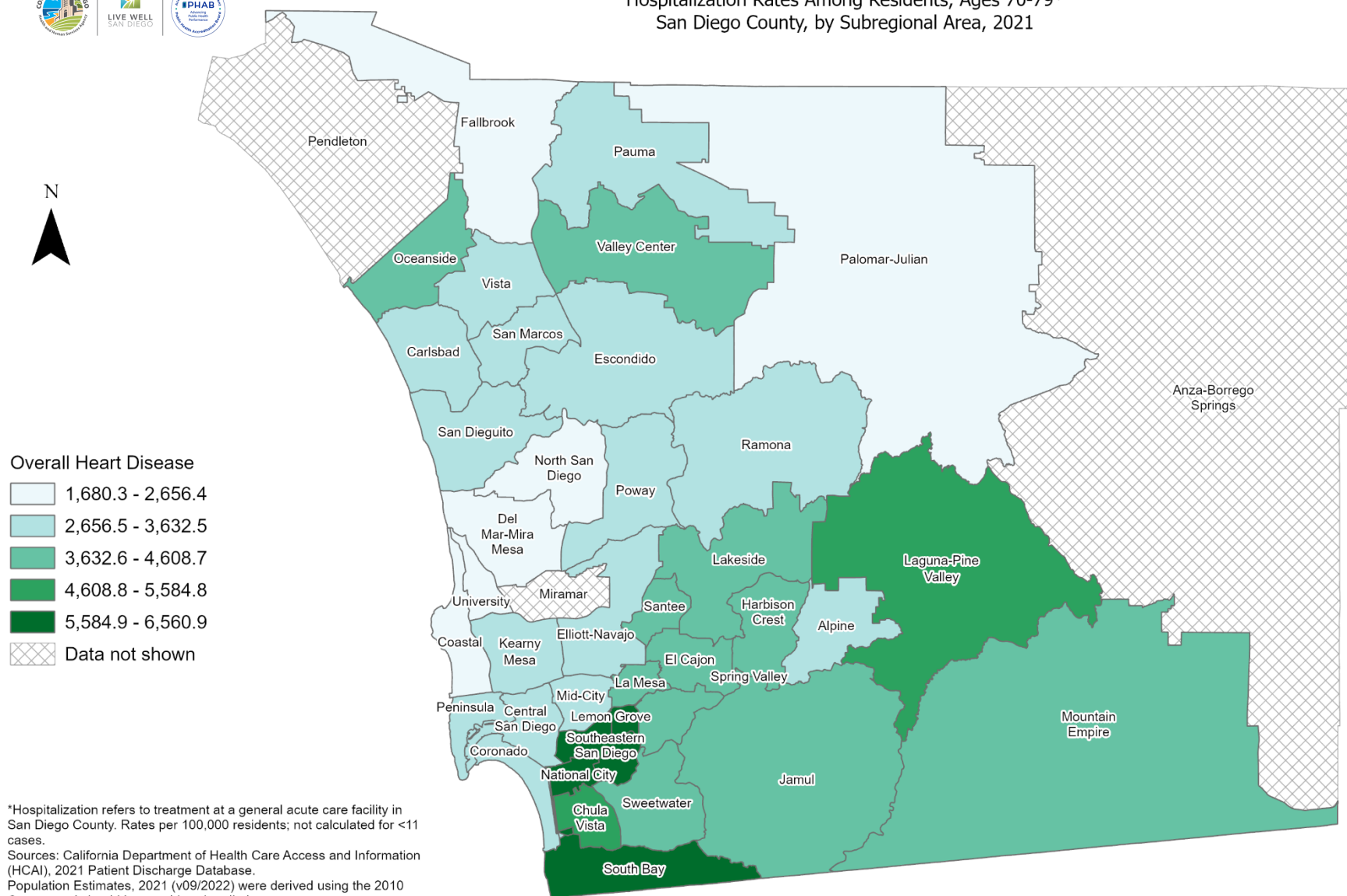
Maps & Analysis by County of San Diego, Health and Human Services Agency, Public Health Services, Community Health Statistics Unit.  
Contact 619.692.6672. [https://www.sandiegocounty.gov/hhsa/programs/phs/community\\_health\\_statistics/](https://www.sandiegocounty.gov/hhsa/programs/phs/community_health_statistics/).  
August, 2023.  
LiveWellSD.org.

0 5 10 Miles





# Hospitalization Rates Among Residents, Ages 70-79\* San Diego County, by Subregional Area, 2021



\*Hospitalization refers to treatment at a general acute care facility in San Diego County. Rates per 100,000 residents; not calculated for <11 cases.  
Sources: California Department of Health Care Access and Information (HCAI), 2021 Patient Discharge Database.  
Population Estimates, 2021 (v09/2022) were derived using the 2010 Census and should be considered preliminary.

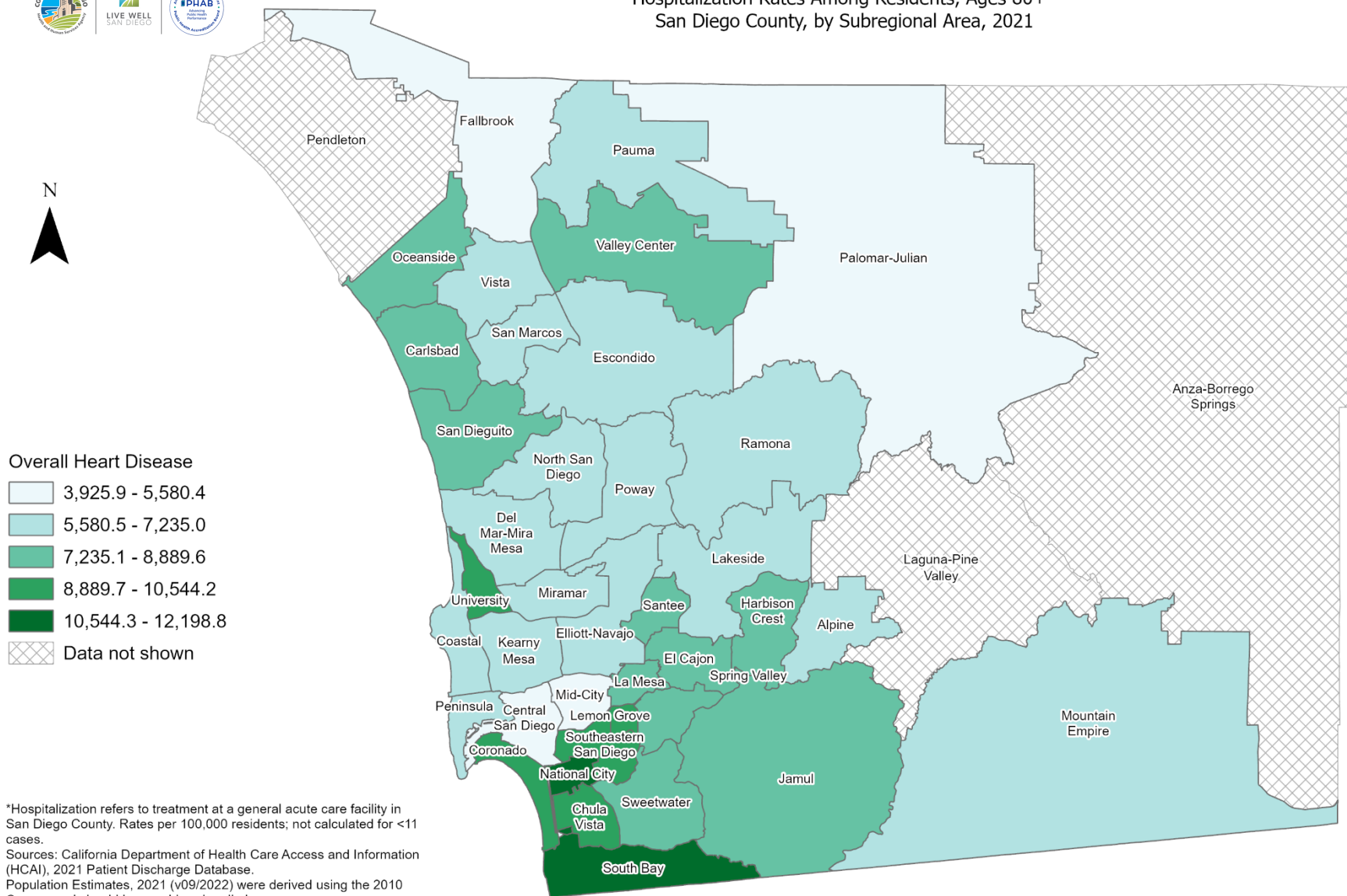
Maps & Analysis by County of San Diego, Health and Human Services Agency, Public Health Services, Community Health Statistics Unit.  
Contact 619.692.6672. [https://www.sandiegocounty.gov/hhsa/programs/phs/community\\_health\\_statistics/](https://www.sandiegocounty.gov/hhsa/programs/phs/community_health_statistics/).  
August, 2023.  
[LiveWellSD.org](http://LiveWellSD.org).

0 5 10 Miles





# Hospitalization Rates Among Residents, Ages 80+\* San Diego County, by Subregional Area, 2021



\*Hospitalization refers to treatment at a general acute care facility in San Diego County. Rates per 100,000 residents; not calculated for <11 cases.  
Sources: California Department of Health Care Access and Information (HCAI), 2021 Patient Discharge Database.  
Population Estimates, 2021 (v09/2022) were derived using the 2010 Census and should be considered preliminary.

Maps & Analysis by County of San Diego, Health and Human Services Agency, Public Health Services, Community Health Statistics Unit.  
Contact 619.692.6672. [https://www.sandiegocounty.gov/hhsa/programs/phs/community\\_health\\_statistics/](https://www.sandiegocounty.gov/hhsa/programs/phs/community_health_statistics/).  
August, 2023.  
[LiveWellSD.org](http://LiveWellSD.org).

0 5 10 Miles



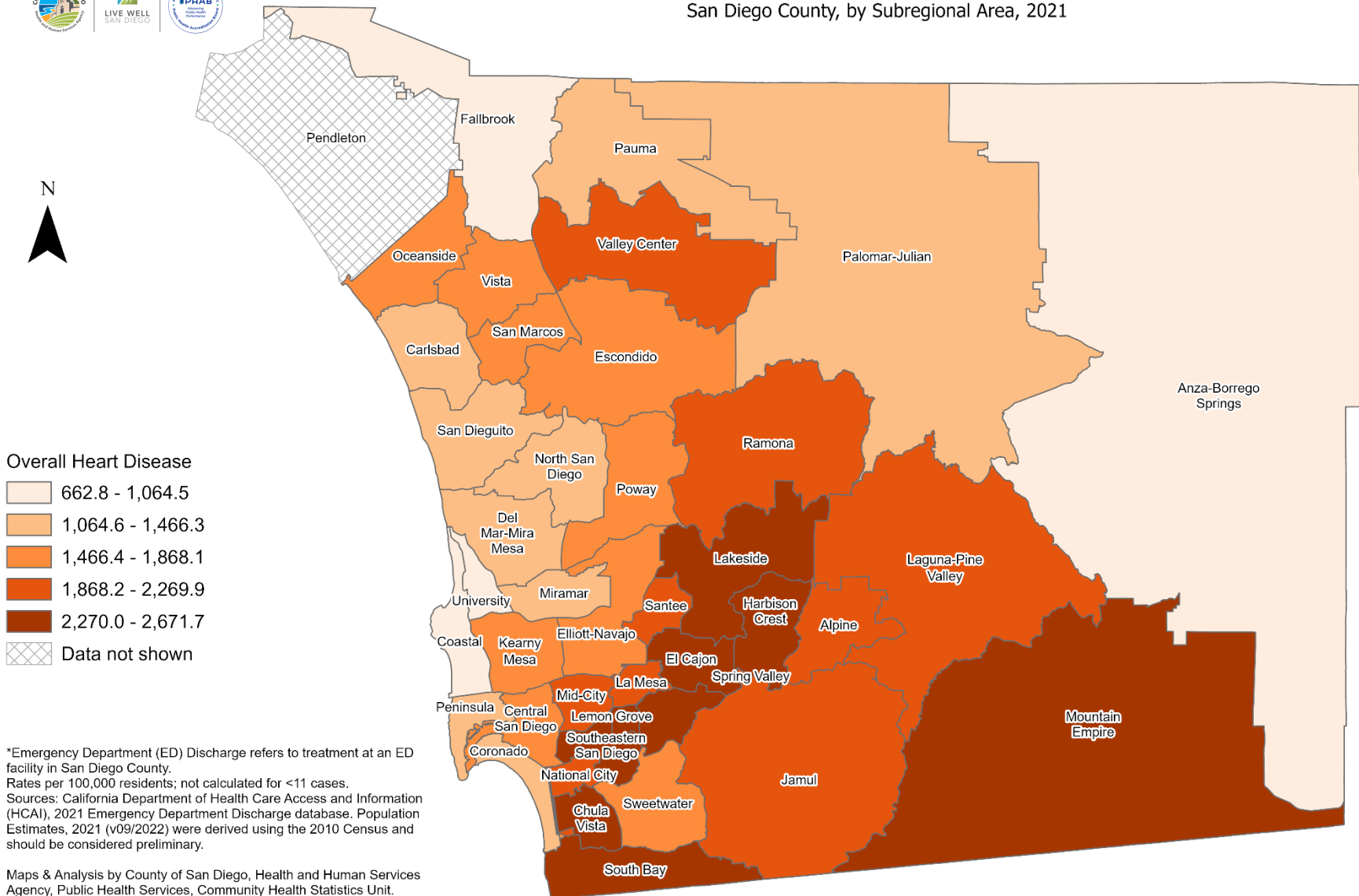


# SECTION 3

## Emergency Department (ED) Rates Among San Diego County Residents by Demographics, 2021:

- Total Rate
  - Race/Ethnicity
    - Asian/Pacific Islander (API)
    - Black
    - Hispanic
    - White
  - Age Group
    - 0-9 Years
    - 10-19 Years
    - 20-29 Years
    - 30-39 Years
    - 40-49 Years
    - 50-59 Years
    - 60-69 Years
    - 70-79 Years
    - 80+ Years

# Total Emergency Department Discharge Rates\* San Diego County, by Subregional Area, 2021



\*Emergency Department (ED) Discharge refers to treatment at an ED facility in San Diego County.  
Rates per 100,000 residents; not calculated for <11 cases.  
Sources: California Department of Health Care Access and Information (HCAI), 2021 Emergency Department Discharge database. Population Estimates, 2021 (v09/2022) were derived using the 2010 Census and should be considered preliminary.

Maps & Analysis by County of San Diego, Health and Human Services Agency, Public Health Services, Community Health Statistics Unit.  
Contact 619.692.6672. [https://www.sandiegocounty.gov/hhsa/programs/phs/community\\_health\\_statistics/](https://www.sandiegocounty.gov/hhsa/programs/phs/community_health_statistics/).  
August, 2023.  
LiveWellSD.org.

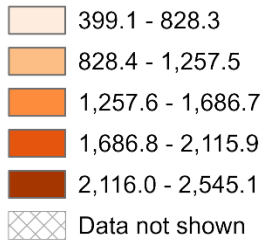
0 5 10 Miles



# Emergency Department Discharge Rates Among Asian/Pacific Islander Residents\* San Diego County, by Subregional Area, 2021

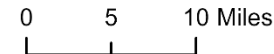
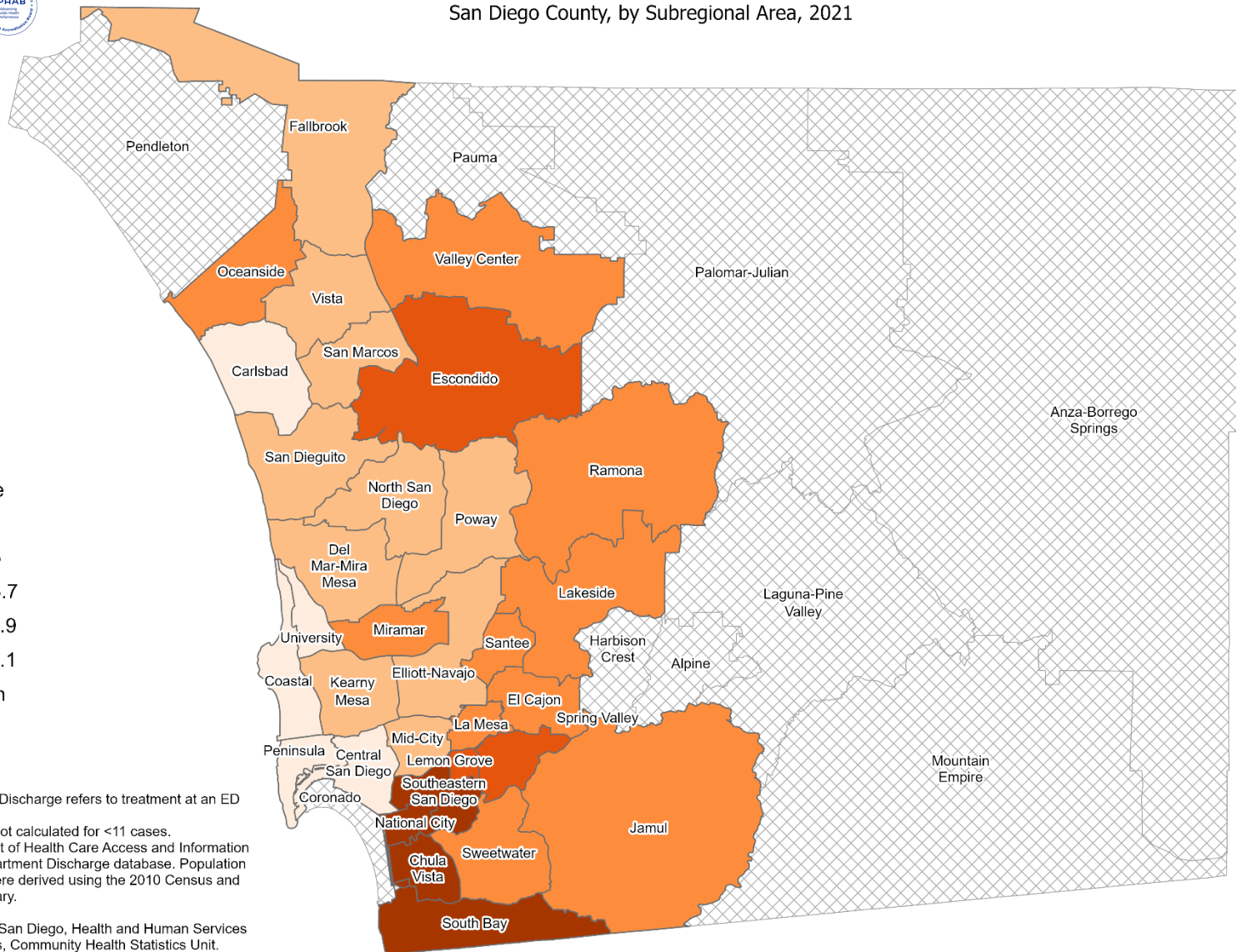


## Overall Heart Disease



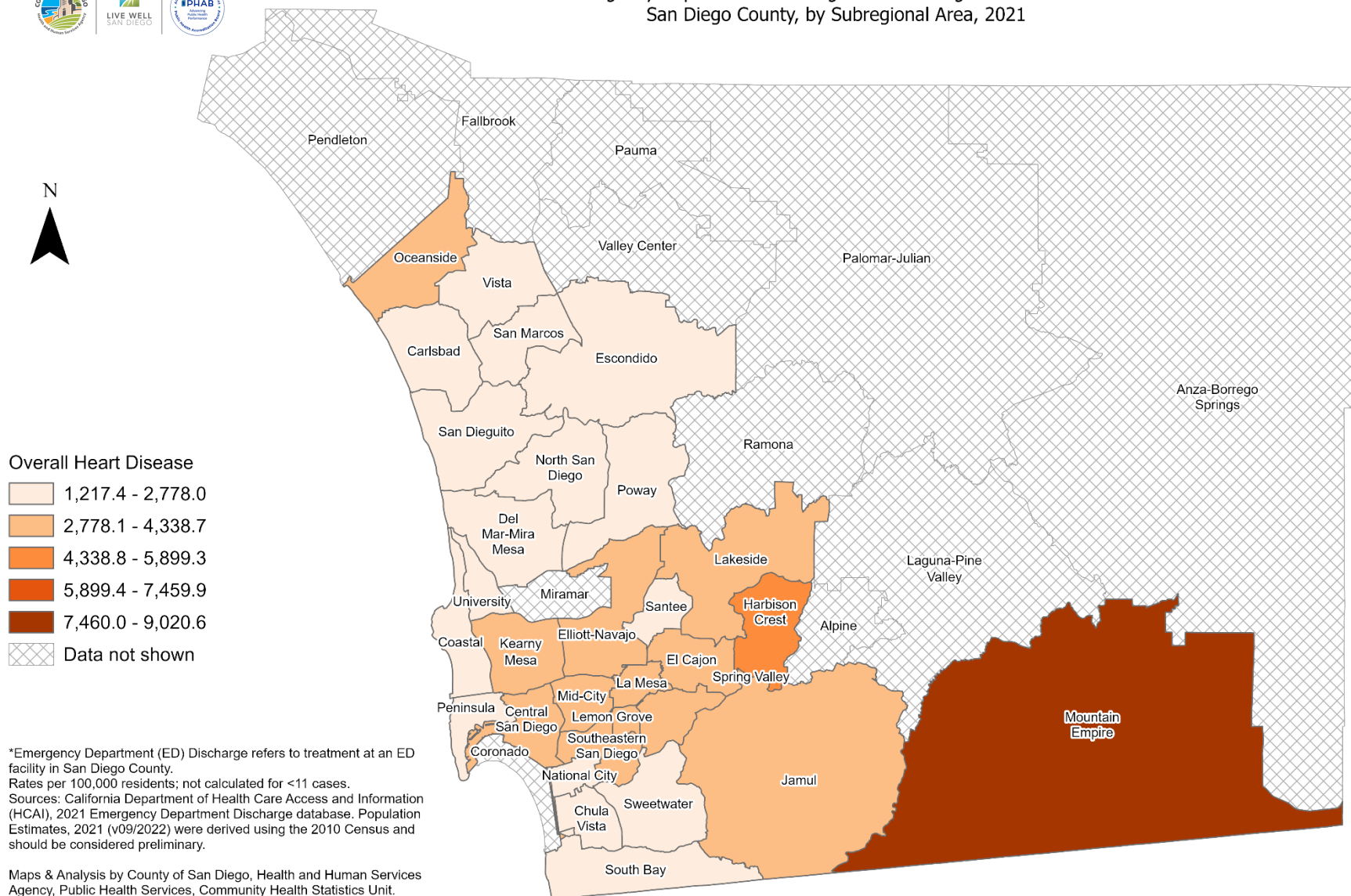
\*Emergency Department (ED) Discharge refers to treatment at an ED facility in San Diego County.  
Rates per 100,000 residents; not calculated for <11 cases.  
Sources: California Department of Health Care Access and Information (HCAI), 2021 Emergency Department Discharge database. Population Estimates, 2021 (v09/2022) were derived using the 2010 Census and should be considered preliminary.

Maps & Analysis by County of San Diego, Health and Human Services Agency, Public Health Services, Community Health Statistics Unit.  
Contact 619.692.6672. [https://www.sandiegocounty.gov/hhsa/programs/phs/community\\_health\\_statistics/](https://www.sandiegocounty.gov/hhsa/programs/phs/community_health_statistics/).  
August, 2023.  
[LiveWellSD.org](http://LiveWellSD.org).





# Emergency Department Discharge Rates Among Black Residents\* San Diego County, by Subregional Area, 2021



\*Emergency Department (ED) Discharge refers to treatment at an ED facility in San Diego County.  
Rates per 100,000 residents; not calculated for <11 cases.  
Sources: California Department of Health Care Access and Information (HCAI), 2021 Emergency Department Discharge database. Population Estimates, 2021 (v09/2022) were derived using the 2010 Census and should be considered preliminary.

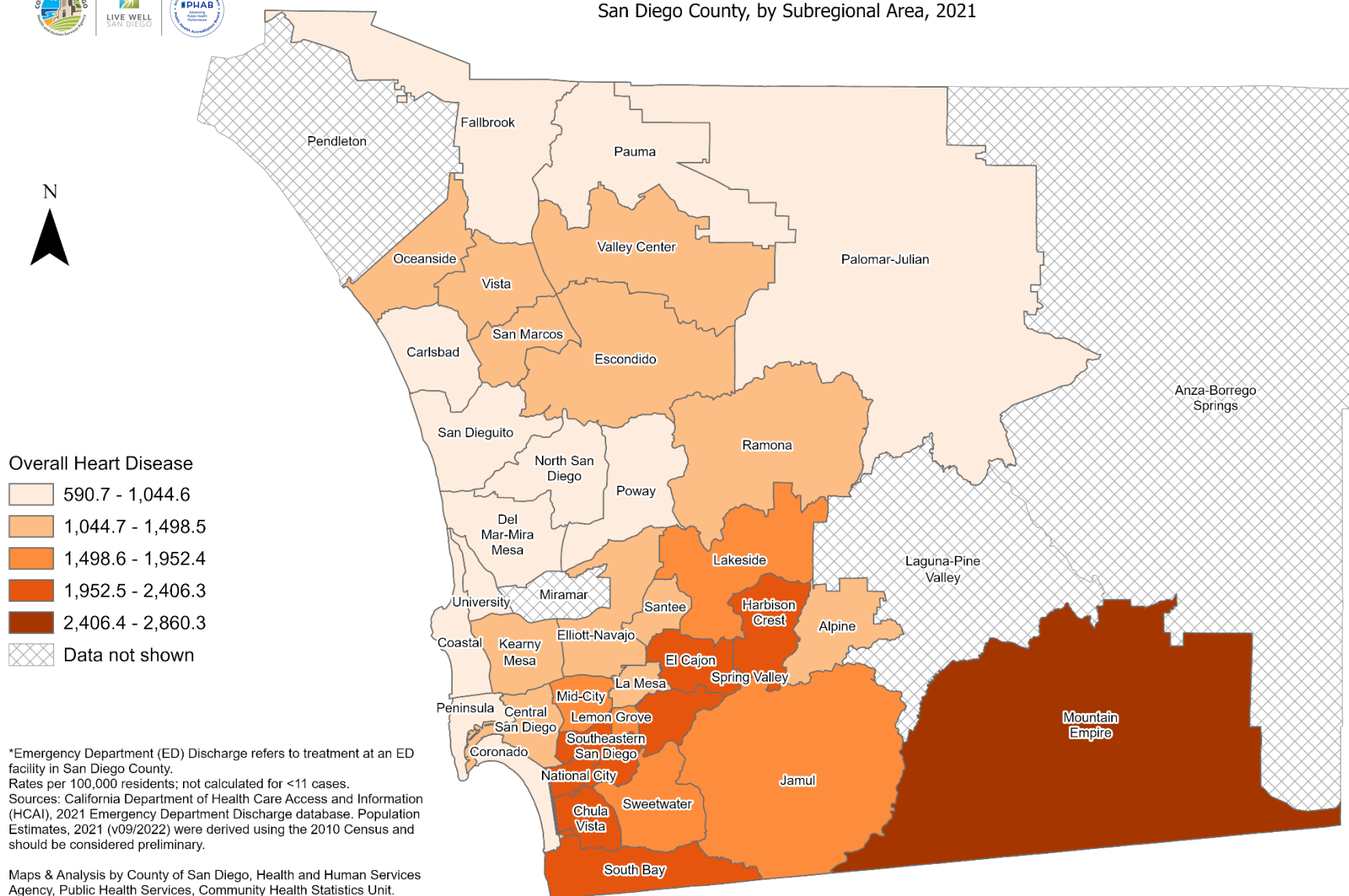
Maps & Analysis by County of San Diego, Health and Human Services Agency, Public Health Services, Community Health Statistics Unit.  
Contact 619.692.6672. [https://www.sandiegocounty.gov/hhsa/programs/phs/community\\_health\\_statistics/](https://www.sandiegocounty.gov/hhsa/programs/phs/community_health_statistics/).  
August, 2023.  
[LiveWellSD.org](http://LiveWellSD.org).

0 5 10 Miles





## Emergency Department Discharge Rates Among Hispanic Residents\* San Diego County, by Subregional Area, 2021



\*Emergency Department (ED) Discharge refers to treatment at an ED facility in San Diego County.  
Rates per 100,000 residents; not calculated for <11 cases.  
Sources: California Department of Health Care Access and Information (HCAI), 2021 Emergency Department Discharge database. Population Estimates, 2021 (v09/2022) were derived using the 2010 Census and should be considered preliminary.

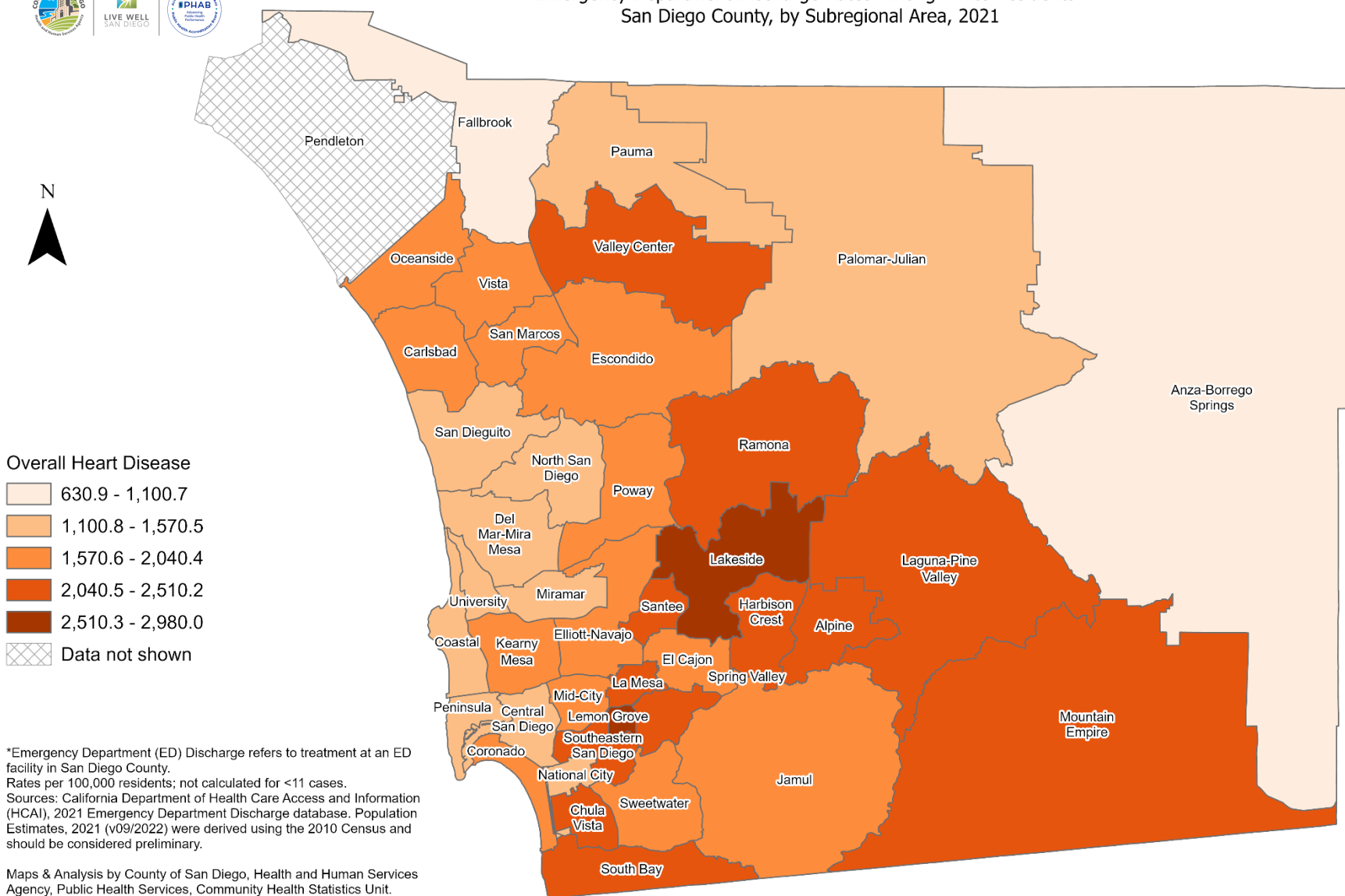
Maps & Analysis by County of San Diego, Health and Human Services Agency, Public Health Services, Community Health Statistics Unit.  
Contact 619.692.6672. [https://www.sandiegocounty.gov/hhsa/programs/phs/community\\_health\\_statistics/](https://www.sandiegocounty.gov/hhsa/programs/phs/community_health_statistics/).  
August, 2023.  
LiveWellSD.org.

0 5 10 Miles





# Emergency Department Discharge Rates Among White Residents\* San Diego County, by Subregional Area, 2021



\*Emergency Department (ED) Discharge refers to treatment at an ED facility in San Diego County.  
Rates per 100,000 residents; not calculated for <11 cases.  
Sources: California Department of Health Care Access and Information (HCAI), 2021 Emergency Department Discharge database. Population Estimates, 2021 (v09/2022) were derived using the 2010 Census and should be considered preliminary.

Maps & Analysis by County of San Diego, Health and Human Services Agency, Public Health Services, Community Health Statistics Unit.  
Contact 619.692.6672. [https://www.sandiegocounty.gov/hhsa/programs/phs/community\\_health\\_statistics/](https://www.sandiegocounty.gov/hhsa/programs/phs/community_health_statistics/).  
August, 2023.  
[LiveWellSD.org](http://LiveWellSD.org).

0 5 10 Miles

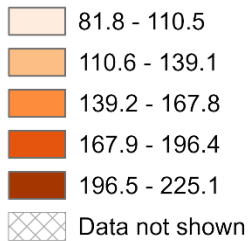




## Emergency Department Discharge Rates Among Residents, Ages 0-9\* San Diego County, by Subregional Area, 2021

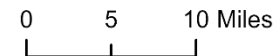
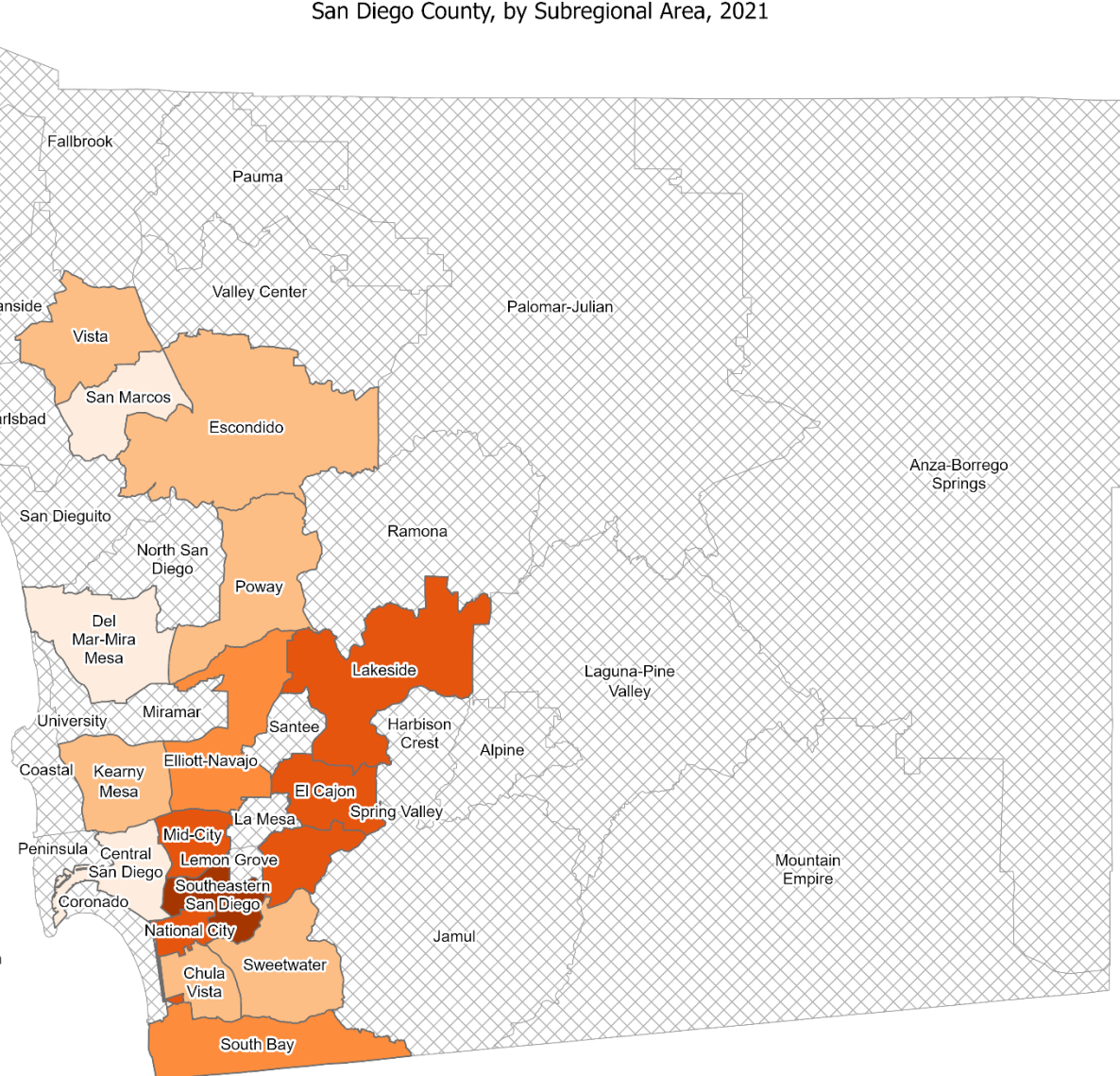


### Overall Heart Disease



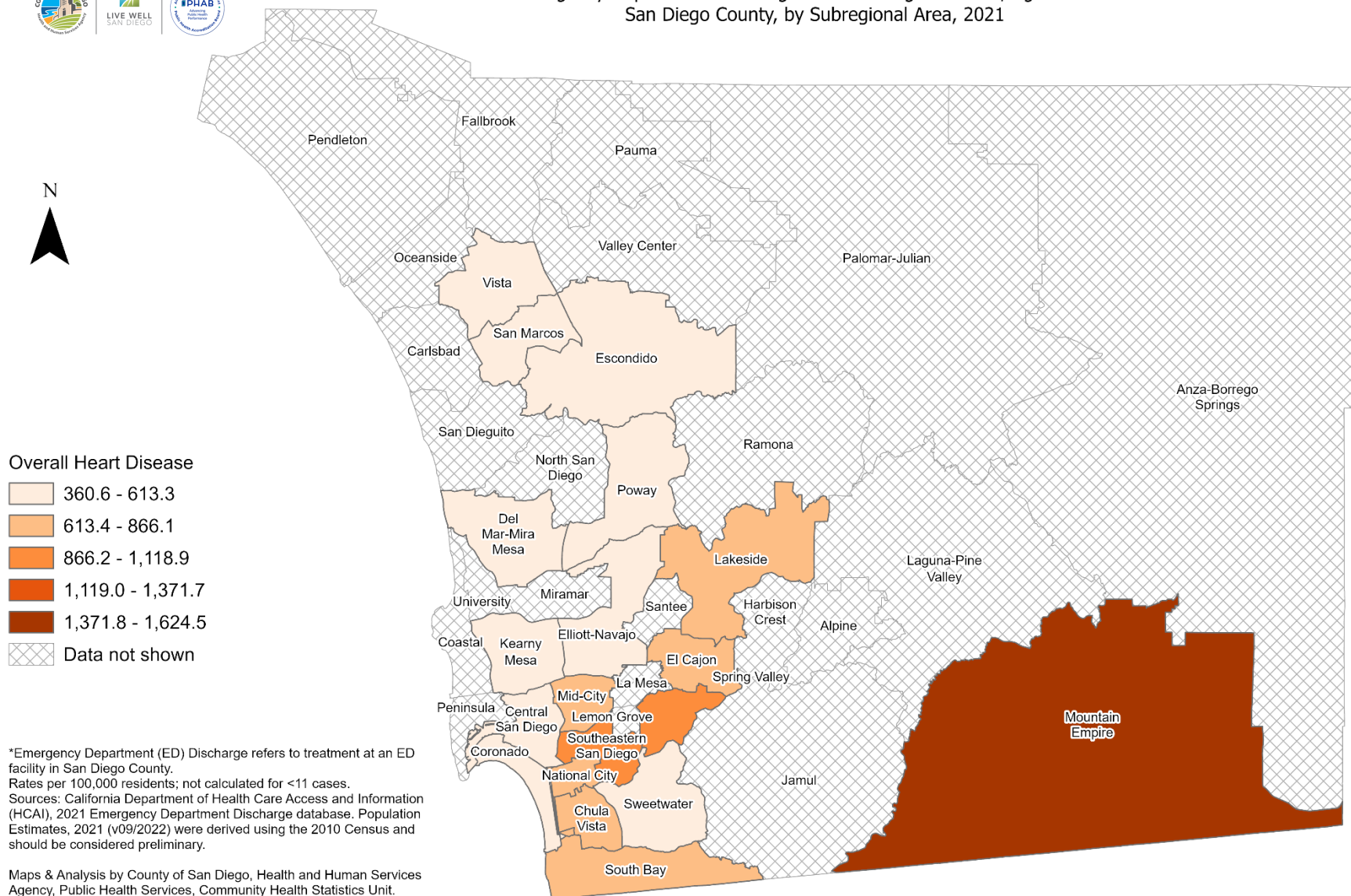
\*Emergency Department (ED) Discharge refers to treatment at an ED facility in San Diego County.  
Rates per 100,000 residents; not calculated for <11 cases.  
Sources: California Department of Health Care Access and Information (HCAI), 2021 Emergency Department Discharge database. Population Estimates, 2021 (v09/2022) were derived using the 2010 Census and should be considered preliminary.

Maps & Analysis by County of San Diego, Health and Human Services Agency, Public Health Services, Community Health Statistics Unit.  
Contact 619.692.6672. [https://www.sandiegocounty.gov/hhsa/programs/phs/community\\_health\\_statistics/](https://www.sandiegocounty.gov/hhsa/programs/phs/community_health_statistics/).  
August, 2023.  
[LiveWellSD.org](http://LiveWellSD.org).





# Emergency Department Discharge Rates Among Residents, Ages 10-19\* San Diego County, by Subregional Area, 2021



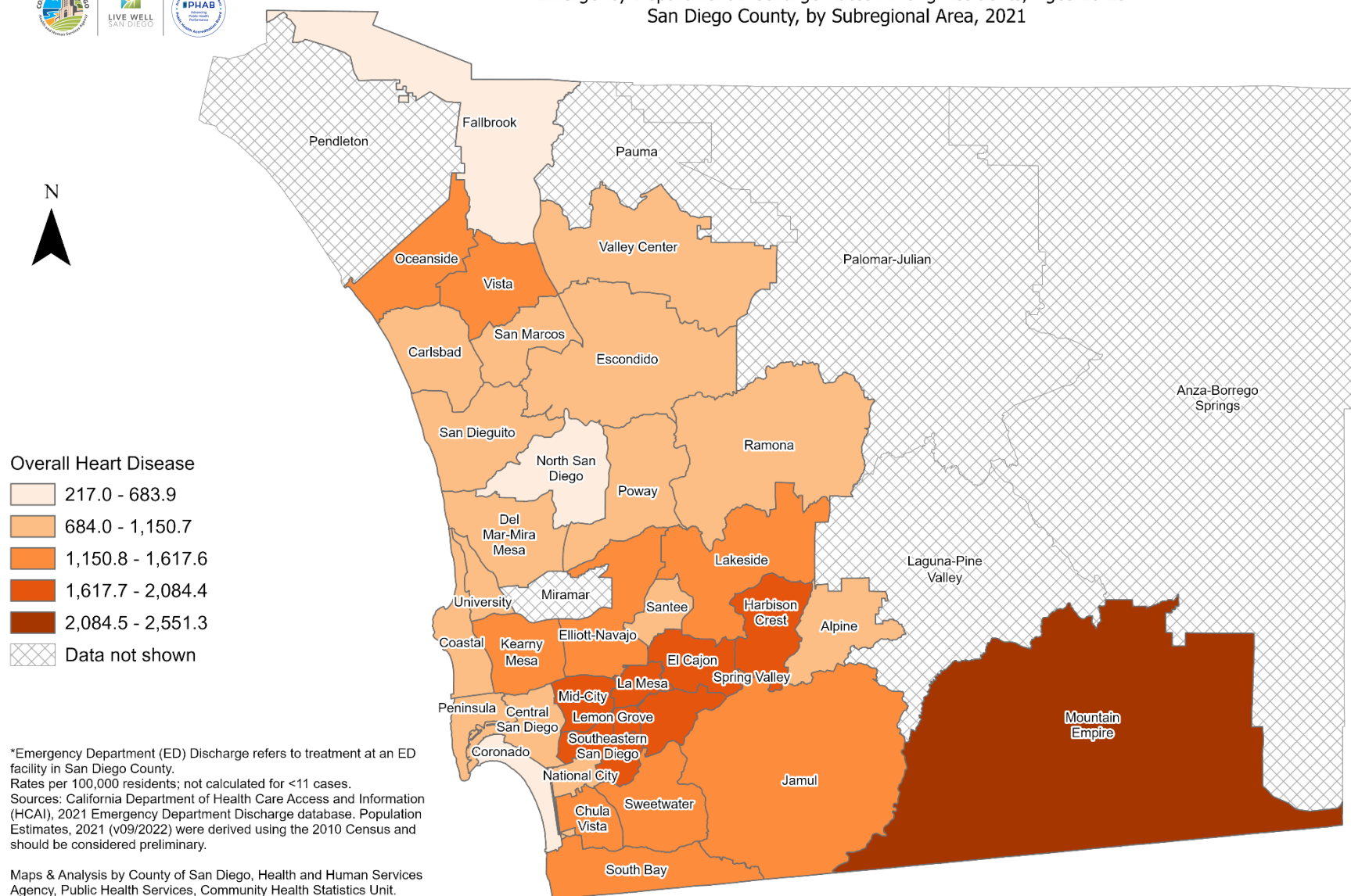
\*Emergency Department (ED) Discharge refers to treatment at an ED facility in San Diego County.  
Rates per 100,000 residents; not calculated for <11 cases.  
Sources: California Department of Health Care Access and Information (HCAI), 2021 Emergency Department Discharge database. Population Estimates, 2021 (v09/2022) were derived using the 2010 Census and should be considered preliminary.

Maps & Analysis by County of San Diego, Health and Human Services Agency, Public Health Services, Community Health Statistics Unit.  
Contact 619.692.6672. [https://www.sandiegocounty.gov/hhsa/programs/phs/community\\_health\\_statistics/](https://www.sandiegocounty.gov/hhsa/programs/phs/community_health_statistics/).  
August, 2023.  
[LiveWellSD.org](http://LiveWellSD.org).



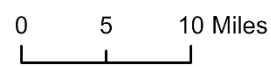


# Emergency Department Discharge Rates Among Residents, Ages 20-29\* San Diego County, by Subregional Area, 2021



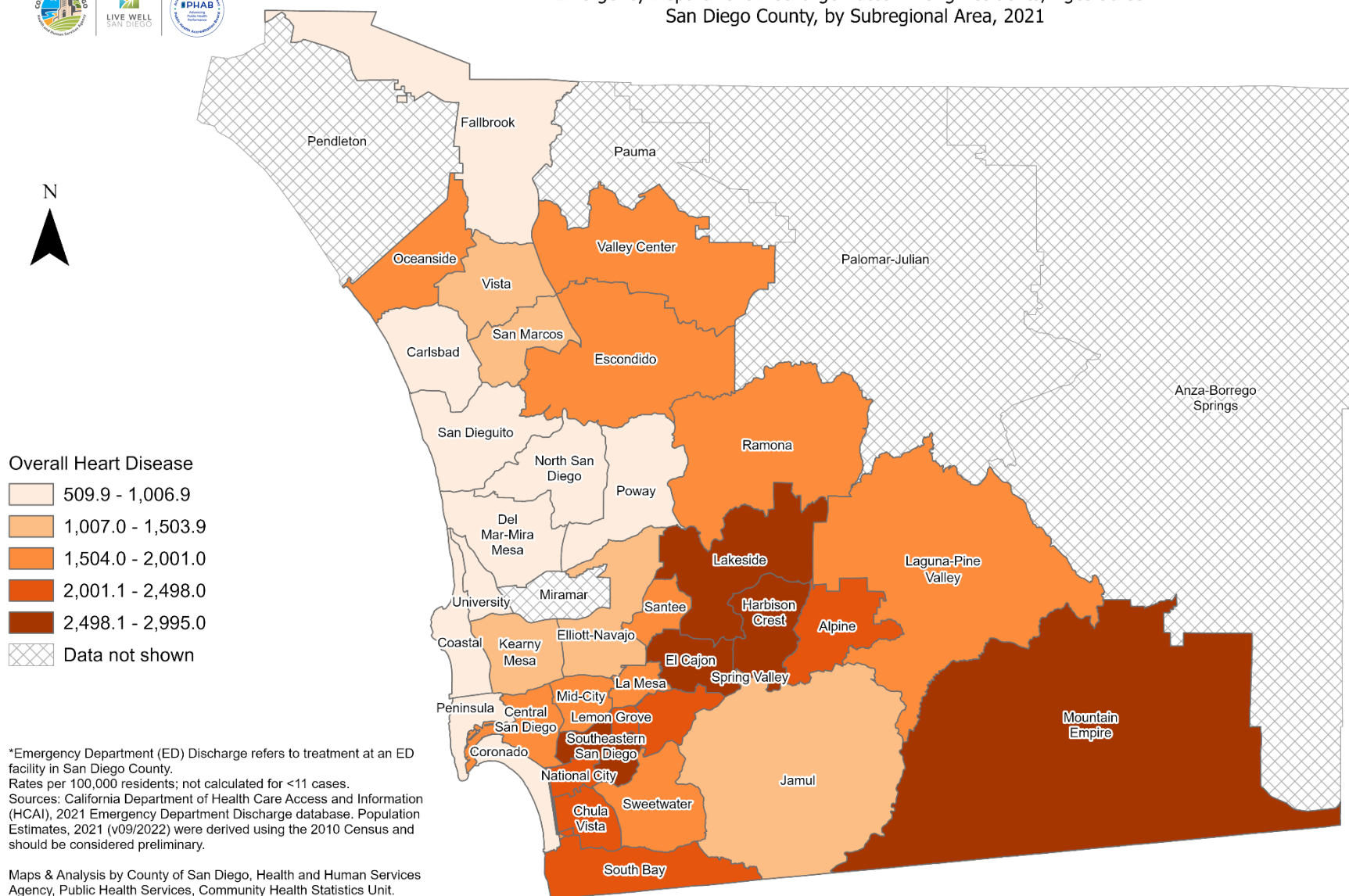
\*Emergency Department (ED) Discharge refers to treatment at an ED facility in San Diego County.  
Rates per 100,000 residents; not calculated for <11 cases.  
Sources: California Department of Health Care Access and Information (HCAI), 2021 Emergency Department Discharge database. Population Estimates, 2021 (v09/2022) were derived using the 2010 Census and should be considered preliminary.

Maps & Analysis by County of San Diego, Health and Human Services Agency, Public Health Services, Community Health Statistics Unit.  
Contact 619.692.6672. [https://www.sandiegocounty.gov/hhsa/programs/phs/community\\_health\\_statistics/](https://www.sandiegocounty.gov/hhsa/programs/phs/community_health_statistics/).  
August, 2023.  
[LiveWellSD.org](http://LiveWellSD.org).





# Emergency Department Discharge Rates Among Residents, Ages 30-39\* San Diego County, by Subregional Area, 2021



\*Emergency Department (ED) Discharge refers to treatment at an ED facility in San Diego County.  
Rates per 100,000 residents; not calculated for <11 cases.  
Sources: California Department of Health Care Access and Information (HCAI), 2021 Emergency Department Discharge database. Population Estimates, 2021 (v09/2022) were derived using the 2010 Census and should be considered preliminary.

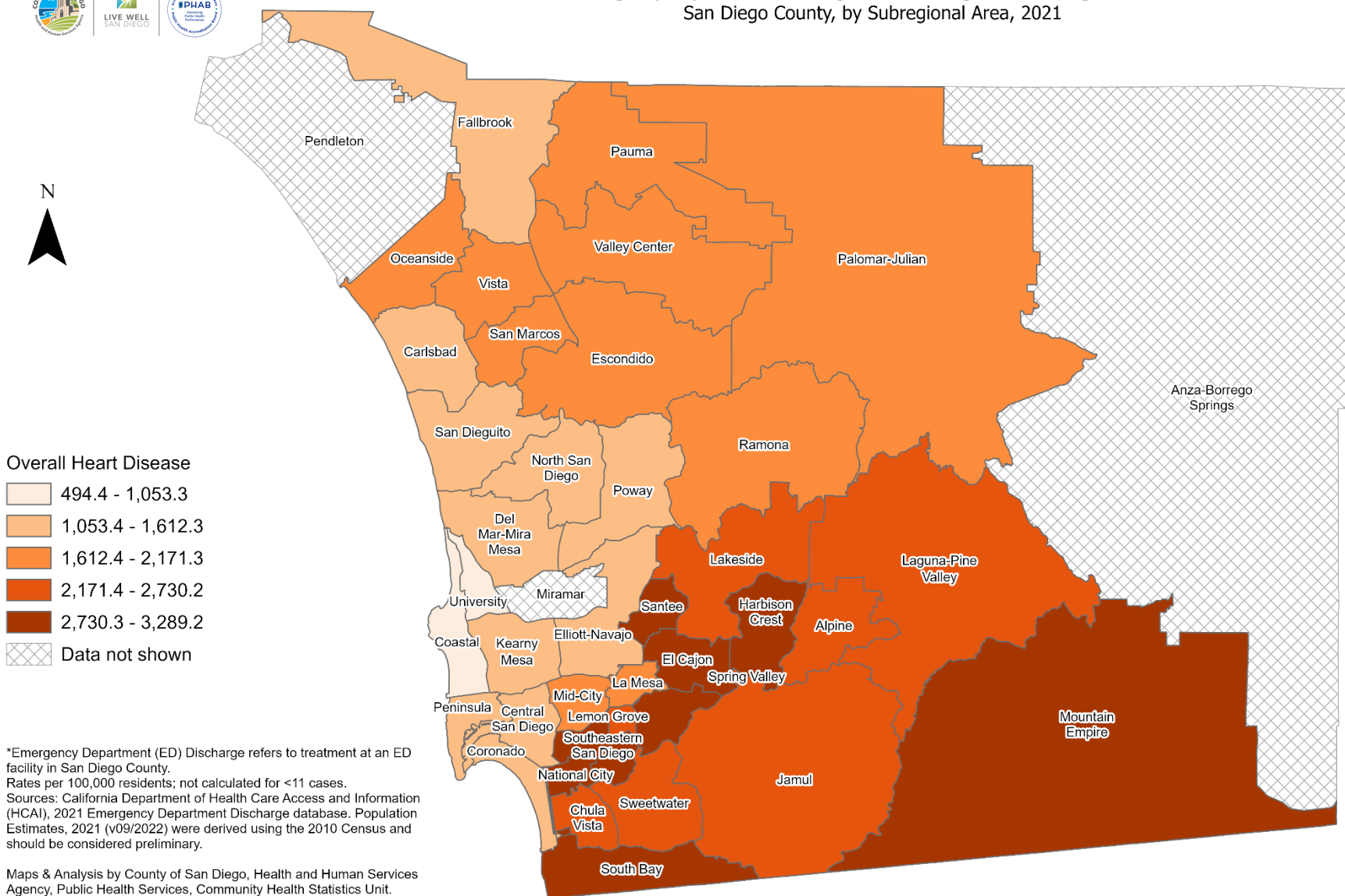
Maps & Analysis by County of San Diego, Health and Human Services Agency, Public Health Services, Community Health Statistics Unit.  
Contact 619.692.6672. [https://www.sandiegocounty.gov/hhsa/programs/phs/community\\_health\\_statistics/](https://www.sandiegocounty.gov/hhsa/programs/phs/community_health_statistics/).  
August, 2023.  
[LiveWellSD.org](http://LiveWellSD.org).

0 5 10 Miles



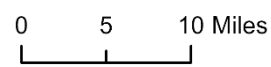


# Emergency Department Discharge Rates Among Residents, Ages 40-49\* San Diego County, by Subregional Area, 2021



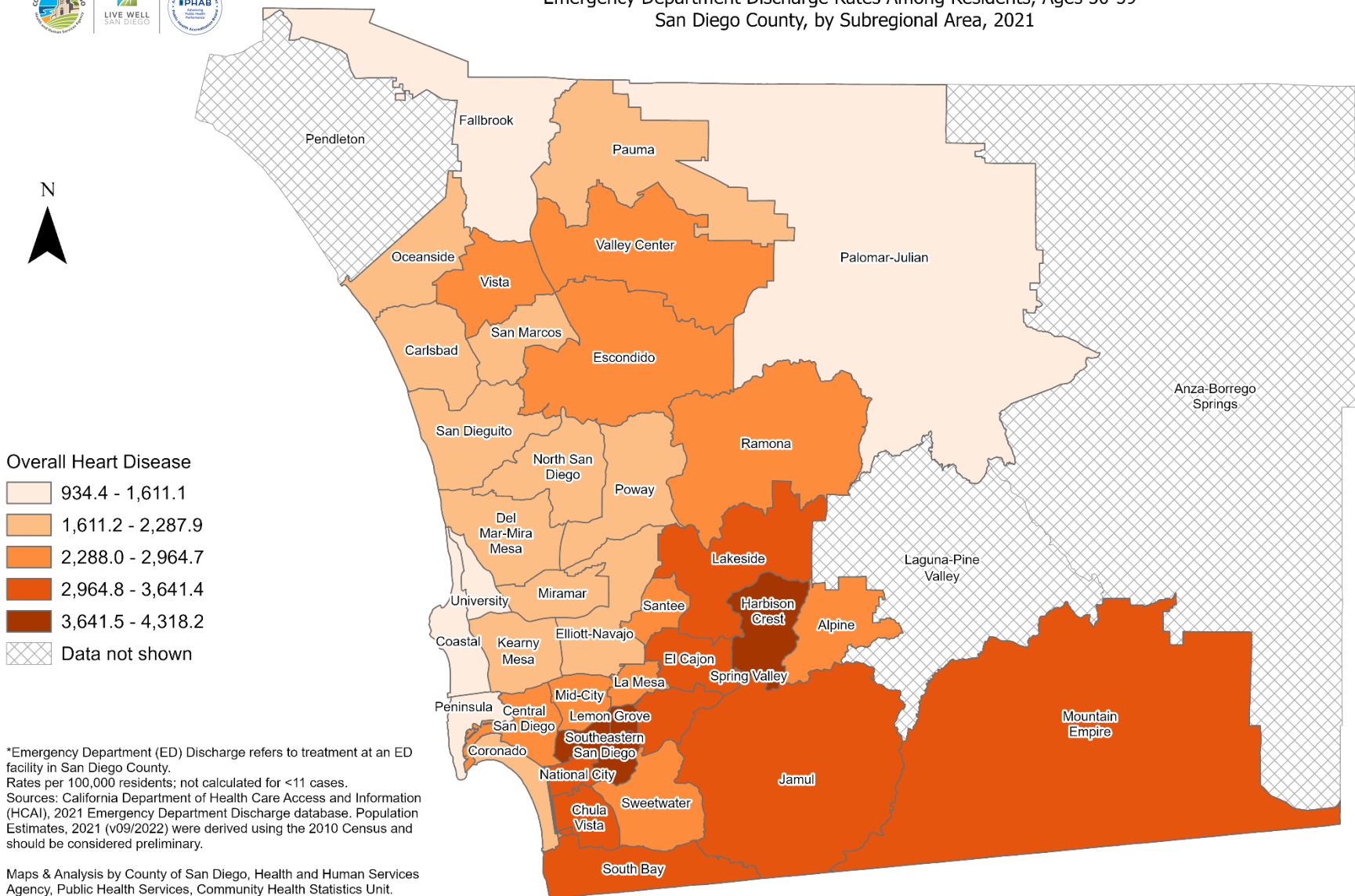
\*Emergency Department (ED) Discharge refers to treatment at an ED facility in San Diego County.  
Rates per 100,000 residents; not calculated for <11 cases.  
Sources: California Department of Health Care Access and Information (HCAI), 2021 Emergency Department Discharge database. Population Estimates, 2021 (v09/2022) were derived using the 2010 Census and should be considered preliminary.

Maps & Analysis by County of San Diego, Health and Human Services Agency, Public Health Services, Community Health Statistics Unit.  
Contact 619.692.6672. [https://www.sandiegocounty.gov/hhsa/programs/phs/community\\_health\\_statistics/](https://www.sandiegocounty.gov/hhsa/programs/phs/community_health_statistics/).  
August, 2023.  
[LiveWellSD.org](http://LiveWellSD.org).





# Emergency Department Discharge Rates Among Residents, Ages 50-59\* San Diego County, by Subregional Area, 2021



\*Emergency Department (ED) Discharge refers to treatment at an ED facility in San Diego County.  
Rates per 100,000 residents; not calculated for <11 cases.  
Sources: California Department of Health Care Access and Information (HCAI), 2021 Emergency Department Discharge database. Population Estimates, 2021 (v09/2022) were derived using the 2010 Census and should be considered preliminary.

Maps & Analysis by County of San Diego, Health and Human Services Agency, Public Health Services, Community Health Statistics Unit.  
Contact 619.692.6672. [https://www.sandiegocounty.gov/hhsa/programs/phs/community\\_health\\_statistics/](https://www.sandiegocounty.gov/hhsa/programs/phs/community_health_statistics/).  
August, 2023.  
[LiveWellSD.org](http://LiveWellSD.org).

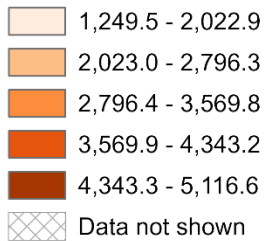




# Emergency Department Discharge Rates Among Residents, Ages 60-69\* San Diego County, by Subregional Area, 2021

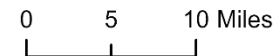
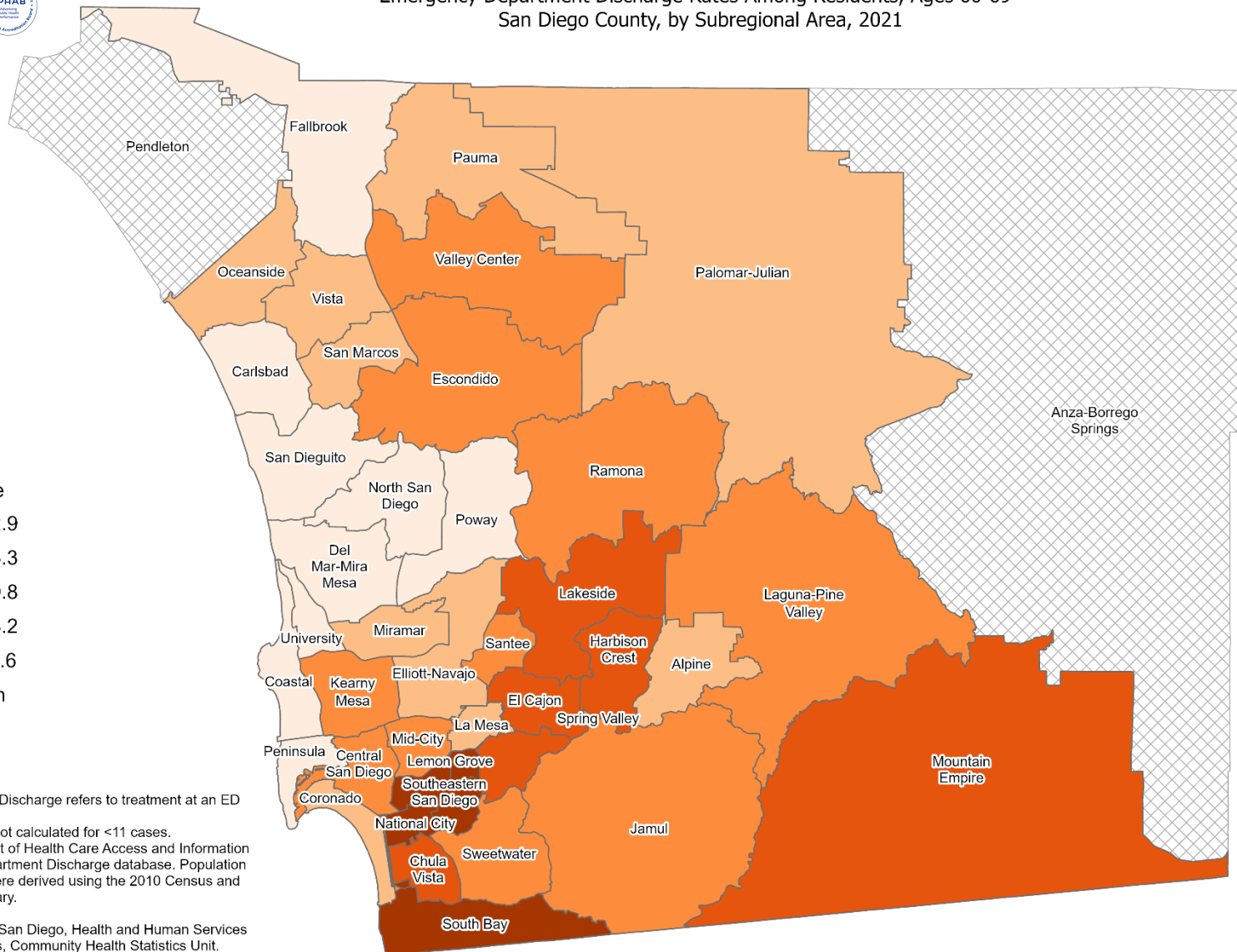


## Overall Heart Disease



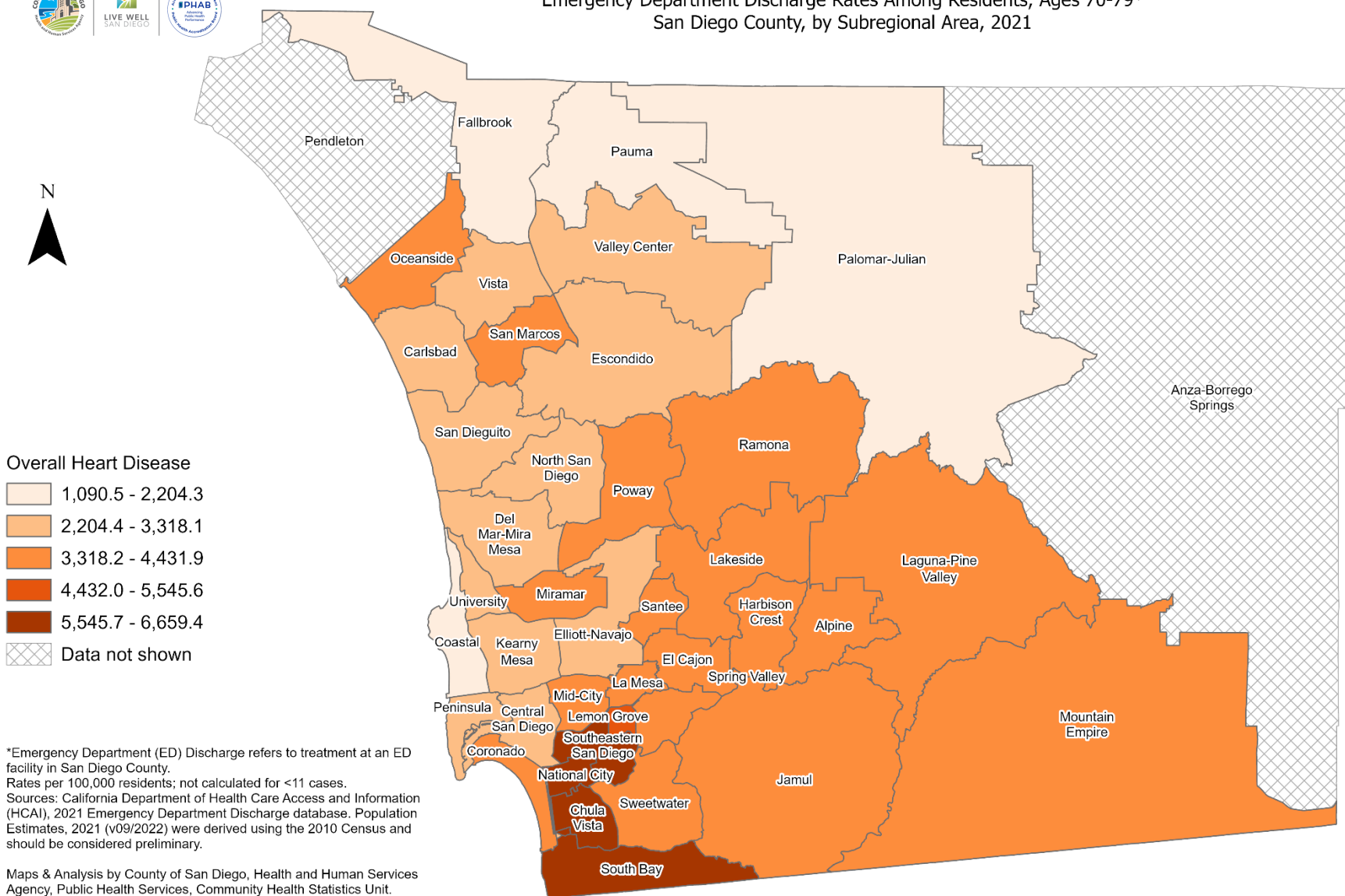
\*Emergency Department (ED) Discharge refers to treatment at an ED facility in San Diego County.  
Rates per 100,000 residents; not calculated for <11 cases.  
Sources: California Department of Health Care Access and Information (HCAI), 2021 Emergency Department Discharge database. Population Estimates, 2021 (v09/2022) were derived using the 2010 Census and should be considered preliminary.

Maps & Analysis by County of San Diego, Health and Human Services Agency, Public Health Services, Community Health Statistics Unit.  
Contact 619.692.6672. [https://www.sandiegocounty.gov/hhsa/programs/phs/community\\_health\\_statistics/](https://www.sandiegocounty.gov/hhsa/programs/phs/community_health_statistics/).  
August, 2023.  
[LiveWellSD.org](http://LiveWellSD.org).





# Emergency Department Discharge Rates Among Residents, Ages 70-79\* San Diego County, by Subregional Area, 2021



\*Emergency Department (ED) Discharge refers to treatment at an ED facility in San Diego County.  
Rates per 100,000 residents; not calculated for <11 cases.  
Sources: California Department of Health Care Access and Information (HCAI), 2021 Emergency Department Discharge database. Population Estimates, 2021 (v09/2022) were derived using the 2010 Census and should be considered preliminary.

Maps & Analysis by County of San Diego, Health and Human Services Agency, Public Health Services, Community Health Statistics Unit.  
Contact 619.692.6672. [https://www.sandiegocounty.gov/hhsa/programs/phs/community\\_health\\_statistics/](https://www.sandiegocounty.gov/hhsa/programs/phs/community_health_statistics/).  
August, 2023.  
LiveWellSD.org.

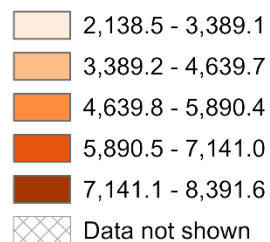




# Emergency Department Discharge Rates Among Residents, Ages 80+\* San Diego County, by Subregional Area, 2021

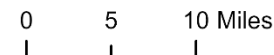
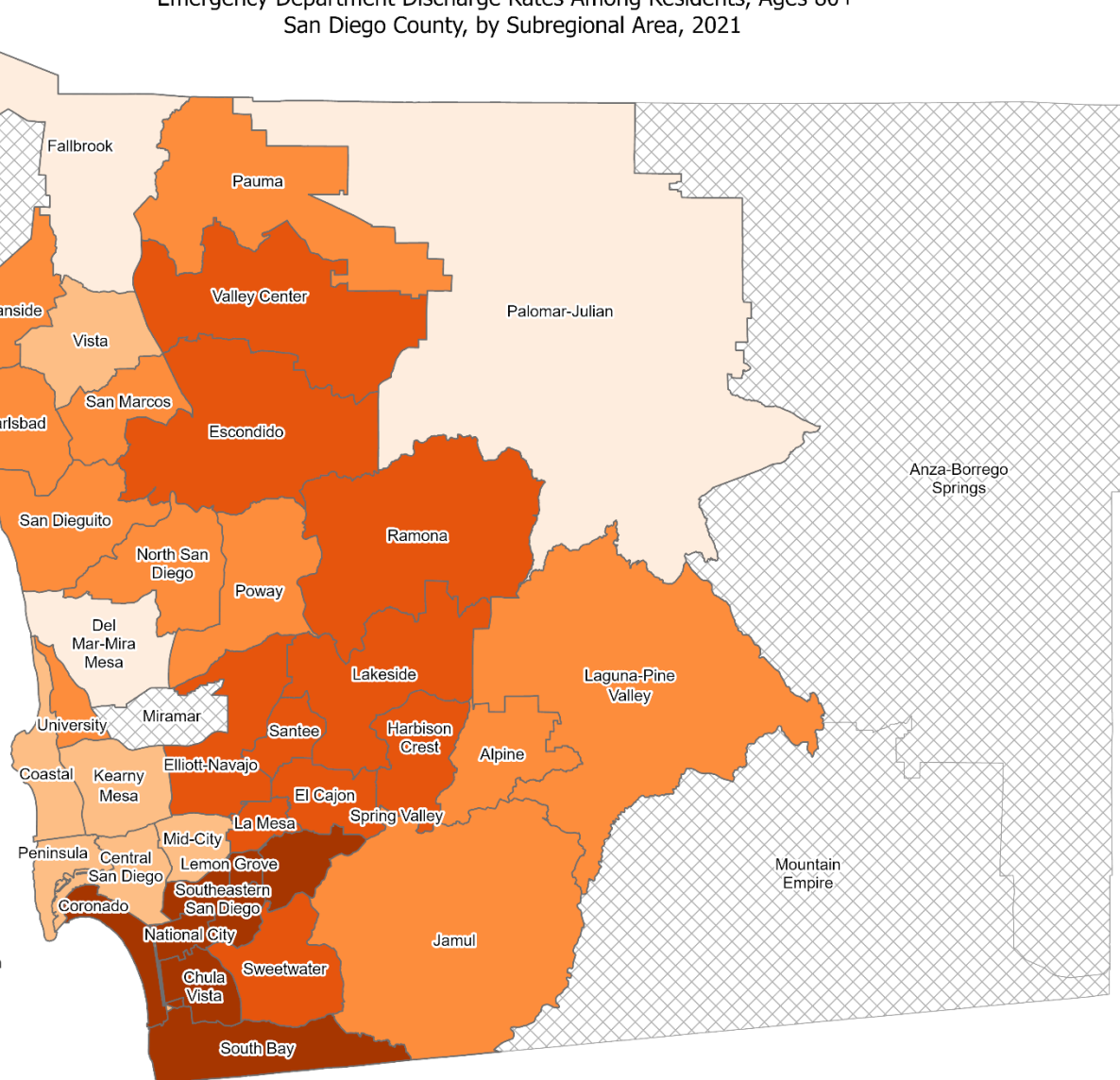


## Overall Heart Disease



\*Emergency Department (ED) Discharge refers to treatment at an ED facility in San Diego County.  
Rates per 100,000 residents; not calculated for <11 cases.  
Sources: California Department of Health Care Access and Information (HCAI), 2021 Emergency Department Discharge database. Population Estimates, 2021 (v09/2022) were derived using the 2010 Census and should be considered preliminary.

Maps & Analysis by County of San Diego, Health and Human Services Agency, Public Health Services, Community Health Statistics Unit.  
Contact 619.692.6672. [https://www.sandiegocounty.gov/hhsa/programs/phs/community\\_health\\_statistics/](https://www.sandiegocounty.gov/hhsa/programs/phs/community_health_statistics/).  
August, 2023.  
[LiveWellSD.org](https://www.livewellsd.org).



# SECTION 4

## In-Patient Treatment (IPT) Rates Among San Diego County Residents by Demographics, 2021:

- Total Rate
  - Race/Ethnicity
    - Asian/Pacific Islander (API)
    - Black
    - Hispanic
    - White
  - Age Group
    - 0-9 Years
    - 10-19 Years
    - 20-29 Years
    - 30-39 Years
    - 40-49 Years
    - 50-59 Years
    - 60-69 Years
    - 70-79 Years
    - 80+ Years

**No SRA-level rate data  
available for this section.**